

Sept 83

# The Tumbleweed

CFS Alask, Sask. August '83

## OLICE MILITAIRE

# Lost?

One home constructed of leaves, twigs, grass, etc., complete with future offspring in egg shaped containers. Last seen leaving area of main gate attached to small black car. If found contact the 'sparrow' located at the guardhouse.



# Found!

One bird nest, complete with eggs. Found attached to black vehicle during maintenance inspection. See photo for location.

(Is it true that this could be a new prototype, energy efficient siren?)

photo by R Dupchak

CANADA

# Letters 'n things

The Tumbleweed is an unofficial military publication and is printed with the kind permission of the Station Commander, Major V.W. Barker.

The views and opinions expressed are those of the contributors and do not necessarily reflect those of the Editor the Canadian Forces or the Department of National Defence.

The Editor reserves the right to reject any editorial or advertising material at his/her discretion.

Items will not be accepted for publication unless signed by the contributor and received by noon of the deadline day.

Send all correspondence to:

"The Editor, Tumbleweed",  
CFS Alask,

Alask, Sask., SOLOAO

**Tumbleweed staff**

Editor.....Jerry Lefler

Typists.....Theresa Watson

Local Photography.....Terry Herman

Leo Cormier

Reg Dupchak

Printers.....Roger Shaw

John Rix

Fred Young

Glen Dudley

Assembly.....DMCC shift workers

Distribution.....Boy Scouts

## From the Canada Post Corporation

To all our established customers who are leaving, farewell. To all newcomers at CFS Alask, Welcome. We hope we can be of service to you and would appreciate it if you could drop in and introduce yourselves. It helps us to help you.

The following is a list of times and service available.

Location - Main Street Alask  
phone 968-2626

Wicket Hours:

Mon-Fri 8:30-12:00

1:00- 5:00

Sat. 10:00-12:00

For the security of your mail and your own convenience, you may wish to rent a lock box. The rates are:

Small - \$6.36 per year

Medium - \$12.72 " "

Large - \$19.09 " "

The lock box lobby is open 24 hours a day. First class mail is sorted by 11:00 a.m.

Afternoon dispatch- Eastbound 3:00

Westbound 3:30

See you soon,

Pauline Denney, Postmaster

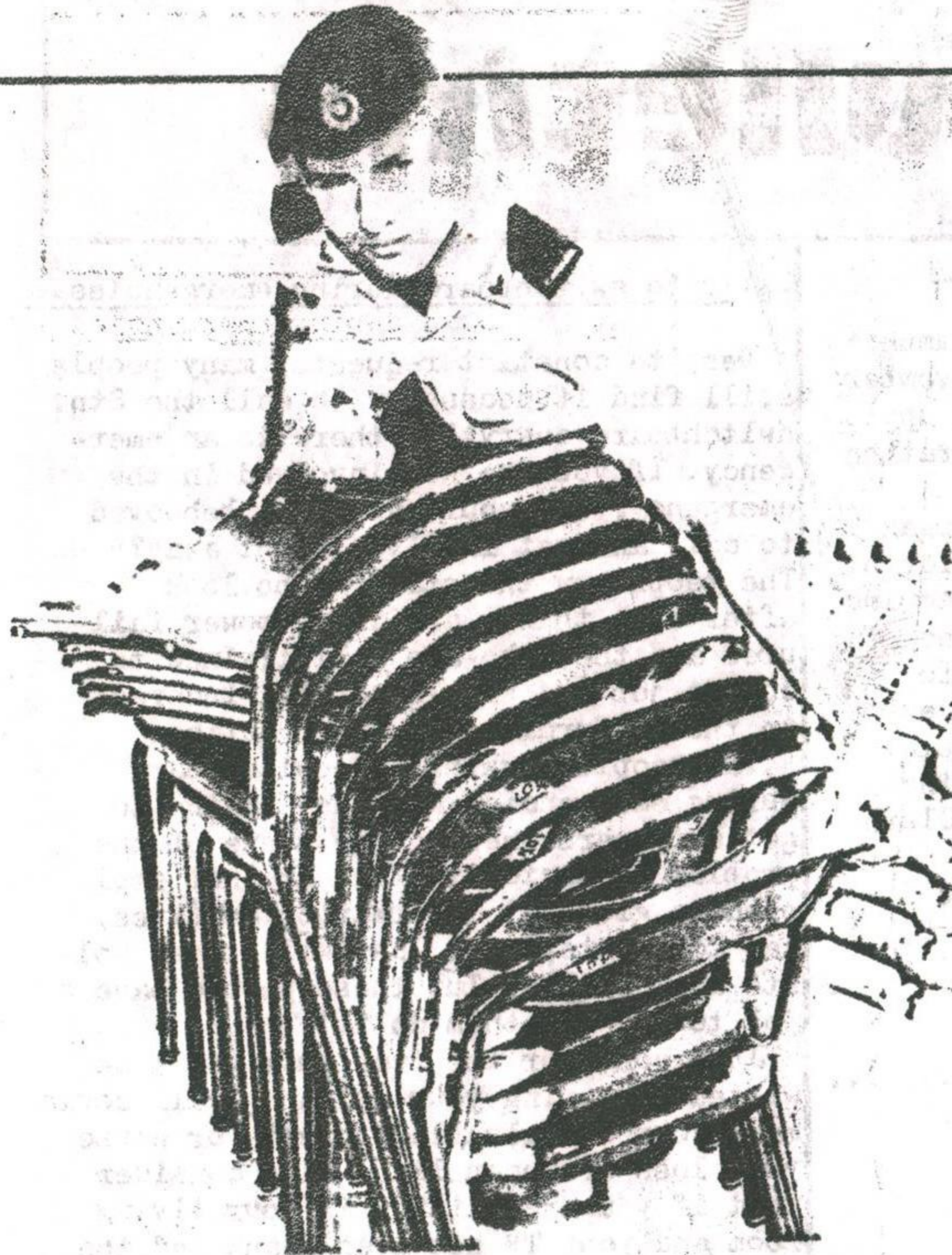
Audrey & Diane, staff.

Editor's note:

For the complete story behind the photo on the cover, contact the 'Bird man of Alask' (Sam the FMP)

Did you know? The Trans-Canada Highway is the longest paved road in the world. When it was officially opened in 1962, it measured nearly 7,700 kilometres, from St. John's Newfoundland to Victoria British Columbia.

**Deadline for  
next issue:  
September 16**



## Universiade '83

Chairs for games- Corporal Joe Runge, 22, of Bruno, Sask., stacks chairs to be used during the World University Games, "Universiade '83", at Commonwealth Stadium in Edmonton. Cpl Runge, a supply technician from Canadian Forces Station, Alsask, Alsask, Saskatchewan, has joined more than 300 members of the Canadian Forces from bases and stations across Canada at CFB Edmonton to support Universiade '83 being held in Edmonton July 1 to 11. More than 4500 athletes from 96 countries participated in the games. Cpl. Runge is the son of Mr. and Mrs. Joseph Runge of Bruno.

(Canadian Forces photo by Sgt. Dennis Mah)

## Air Command gets new boss



Lieutenant-General  
Kenneth E. Lewis

Effective 19 Aug, 1983, the Command of Canada's Air Force will change when Lieutenant-General Kenneth E. Lewis turns over his responsibilities as the nation's top airman to Lieutenant-General Paul D. Manson of Deep River, Ontario and Trail, B.C.  
(Canadian Forces photos)



Lieutenant-General  
Paul D. Manson

# Tumbulletins

## Tumbleweed Park Ladies Auxiliary

Come out and help us support the community. We hold a Craft and Bake Sale in November to raise money. Each Monday leading up to this sale we have workshops demonstrating craft ideas.

We help support various community organizations and support two foster children. If enough interest is shown we are hoping to arrange demonstrations and classes of various crafts. We are also hoping to arrange to have speakers on various subjects of interest to women. For example: Women and the Law, Effective Parenting, Colour Coordination of Make-up and Clothing.

First Meeting: September 12

Time: 8:30 p.m.

Place: Parish Hall

## The Junior Ranks Ladies' Club

The Junior Ranks Ladies' Club would like to give a hearty welcome to the newcomers of CFS Alsask.

This club is open to any woman who is part of or related to the Junior Ranks Mess. Each "meeting" occurs every third Monday of each month.

In September, the club will start up again to host a Meet and Greet Party for the newcomers. Further information will be passed on in the future.

See you in September!

## Calls to switchboard during emergencies

Despite constant requests, many people still find it necessary to call the Stn. switchboard everytime there is an emergency. If you are not involved in the emergency, why would you feel behooved to call and get involved right away? The people on the station who look after such things as fires, power failures and the like are well trained to do the job and should not be hindered in the performance of their duties.

The people working the switchboard during emergencies are busy trying to get duty personnel to the scene of the problem or accident. They are not employed to give out information on fires, car accidents, etc. They will be as polite as possible, but these people have a job to do, let them do it!

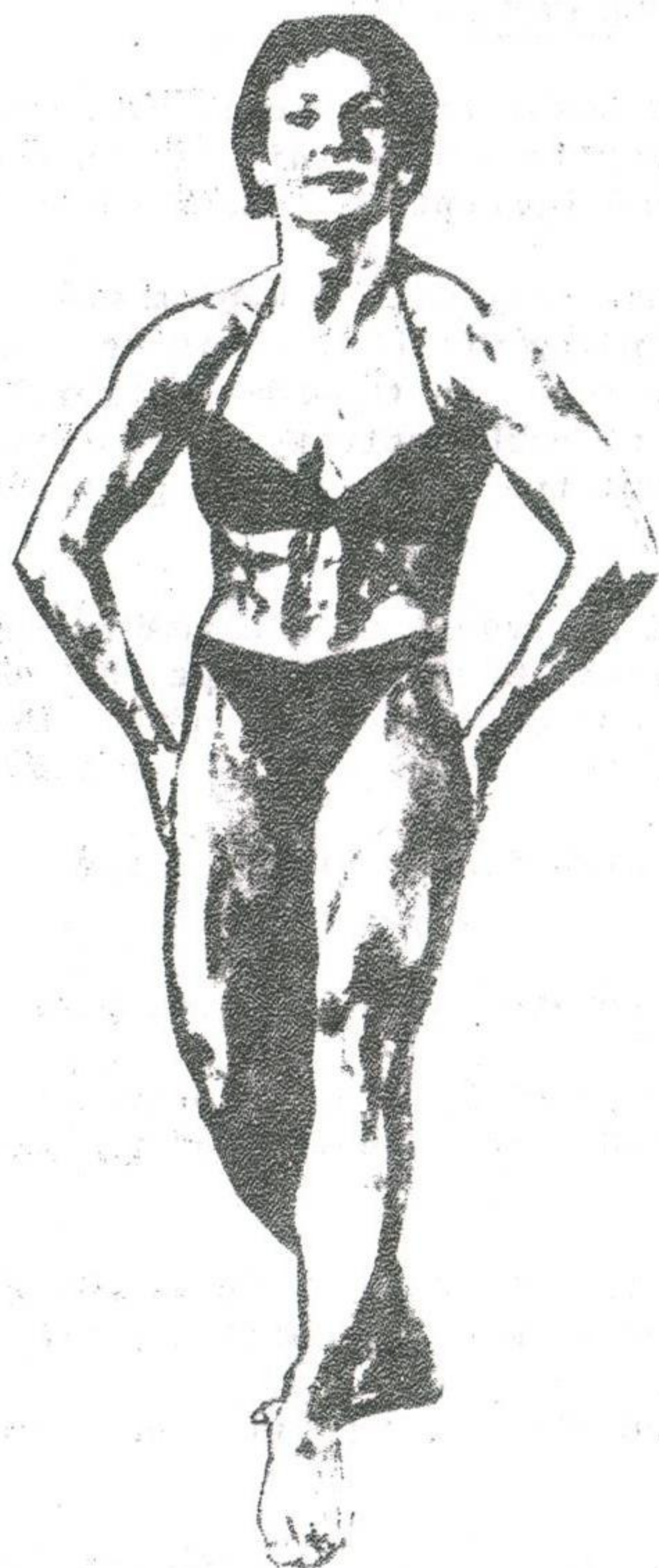
Just consider the fact that the time wasted answering your nuisance call could mean loss of valuable property or worse yet, loss of human life. Also consider that if you are sitting in your living room and your TV set goes blank and the lights go out, the power is probably off. Please do not phone the switchboard asking if there is a power failure or start complaining to the duty personnel, they are doing their best to get people on the scene to restore power.

You are asked to please adhere strictly to these policies and if you have any problems with the switchboard, please contact Lt. Scott Challender at loc 220 or 2672 at home. Your co-operation in this matter will be greatly appreciated.

## GARBAGE TRUCK - CAUTION (U)

1. (U) Please advise your children not to follow or play near or around the garbage truck on its rounds through the MQ area. The driver has expressed concern that the children are endangering themselves.

# SPORTS



Corporal Rhonda Shoemaker, 25, of Victoria, B.C. shows the form that has made her Alberta's woman powerlifting record-holder and this year's third best woman bodybuilder in Alberta. Competing as a 56 kilo (123 lbs) powerlifter she can deadlift 150 kilos (330 lbs), squat 125 kilos (275 lbs) and bench press 75 kilos (165 lbs). She has participated in two world championships and will enter the Canadian nationals in Nova Scotia in January 1984. Cpl Shoemaker is serving at CFB Edmonton as an airframe technician. Her husband, Mcpl Ian Shoemaker is a flight engineer at 408 Sqn, CFB Edmonton. (CF Photo by Pte. Turtle)

## *Rick Urban top angler*



Rick Urban of CFS Alsask was the Grand Champion fisherman at the fourth annual Family Fun Two-Day Derby held at Government Beach, Good Spirit Lake, Saturday and Sunday, July 30 and 31. Urban hooked a three pound 11 ounce pickerel (Walleye) to win the title. A total of 361 entries took part in the derby which was divided into men's ladies and juniors categories.

(CF Photo)

### Ladies Dart League

The All Ranks Ladies Dart league will resume in the WO's & Sgt's Mess on Mon. 26 Sep. '83. If you are interested in joining the league or if you wish more information please contact Phyllis Johnston-968-2240, prior to 22 Sep. The first 24 ladies will be placed on teams. Any additional names will go on a spare list.



GR Naldrett

## Keeping you informed

### STATION FUND COMMENT

Upon the request of the Station Fund Committee, I would like to take this opportunity to clear up a number of misconceptions pertaining to this unit's Station Fund and the Revitalized Recreational Concept as announced on 1 Apr 83.

Essentially Station Fund provides this unit with a medium whereby all NPF activities can be administered by the Commanding Officer. This does not mean, however, that Station Fund has an exclusive rein on the administration and operation of the NPF activities. With the aid of each activity's Constitution and By-laws (if applicable) the Station Fund committee assists and guides each entity to obtain maximum benefit for its members.

Our Station Fund Committee is headed by myself as Chairman with the PMCs of each mess, SWO, Mayor, Chairman Recreational Council, SCompt. SXO and Senior PERI being members. Within this committee our mandate is to advise and assist the CO in the management and supervision of the assets of Station Fund.

Revenue for the operation and administration of Station Fund is derived from the following sources: 1

- a. revenue from station exchange operations (80% of net profit);
- b. assessments against individuals participating in or attending station activities for which funds are administered through Station Fund;
- c. assessments against base activities to recover funds advanced by Station Fund for facility development or capital purchase;
- d. public fund grants and allowances (library grants, physical fitness grants etc.);
- e. money contributed to the station for the collective benefit of all station personnel; and
- f. any other NPF revenue or contributions received by a station.

With the monies expected/received from the above sources, Station Fund prepares and executes its game plan for the NPF fiscal year in the form of a budget. Each entity within the Fund (ie ceramics, Rec Council, CATV etc) are expected to prepare a budget for their specific concern. It is hoped that all entities "break even" at the end of the FY however, as one may expect in some cases, revenues never equal or exceed expenses. The Station Fund Committee understands the directive of all affiliated entities; to provide a recreational outlet. A loss or profit to station fund is, therefore, taken in stride. Profits accrued at the end of the year by NPF clubs are consolidated and placed into the Station Fund account and therefore do not become the exclusive property of the entity accruing the profit. Past financial performance does, however, come into consideration when clubs require either non budgeted or large capital expenditures.

With effect 1 Apr 83, the Country Club concept as we knew it was surpassed and a new Recreational Concept was constituted. The primary reason behind the new concept was to assist certain areas to become self sufficient in their operation and provide the committee more flexibility in the O and M aspect of our station's NPF facilities. It was therefore deemed that each and every club would stand by its current constitution and membership fees. Entities such as the swim pool and Rec Centre would however be treated as a specific concern and charges levied accordingly. The final outcome with respect to charges for these facilities was as follows:

a. SWIM POOL (yearly rate)

	<u>Military</u>	<u>Civilian</u>
Single	\$5.00	\$25.00
Family	\$20.00	\$30.00
Casual (per useage)	\$2.00	\$2.00

b. REC CENTRE (yearly rate)

(includes weight room, sauna, gym floor and related gymnasium/sports equipment and golf course)

	<u>Military</u>	<u>Civilian</u>
Single	Free	\$20.00
Family	Free	\$25.00
Casual	N/A	not available

c. a compulsory Station Fund assessment of \$2.00/month for military personnel

The rationale behind the compulsory station fund assessment was that "CF personnel should expect to contribute towards the provision, maintenance and operation of facilities and activities to the extent normally associated with residents of progressive communities".<sup>2</sup> The argument has been raised, however, that if you belong to a club and pay associated dues, why should you pay an additional levy? In answer to this question we must consider, however, the entities that do not require membership dues in which we all have the option to participate in. Station Fund sponsors numerous functions each year in which we must carry the complete burden, the mandatory assessment is therefore intended to assist in the offsetting losses resulting from these events plus other O and M costs from Station Fund related responsibilities.

The Station Fund concept is a strong and viable one in which we as a community help each other by being able to support all NPF activities through our combined contribution to Station Fund. In order to maintain its viability we must continue to support our clubs and facilities.

Any questions regarding Station Fund or the above article may be addressed to myself at local 202.

G.R. Naldrett

FOOTNOTES:

1. CFAO 27-6
2. PERI INFORMATION BULLETIN 4/83

A MESSAGE FROM YOUR COMMUNITY COUNCIL:

Welcome all newcomers to CFS Alsask. I hope your stay is an enjoyable one. I'd like to introduce to you, the personnel presently involved in the many activities offered on our Station. Any inquiry you may have in the area of your interest can be directed to them accordingly:

Community Council Mayor - Sgt Sam Pasta - PMQ 40

Community Council Ward 1 Rep. - WO Bernie Paquette - PMQ 32

Community Council Ward 2 Rep. - Sgt Sam Pasta - PMQ 40

Community Council Ward 3 Rep. - Sgt Ralph MacCormack - PMQ 82

Community Council Ward 4 Rep. - Sgt Gerry Maringer - PMQ 118

(SEE ATTACHED PMQ MAP FOR YOUR WARD AREA)

Garden Plots - MCpl John Eckenswiller - PMQ 19

Pet Control Officer - Cpl Sean Smith - PMQ 39 - (PET REGISTRATION)

Playground Rep. - WO Bernie Paquette - PMQ 32

Golf Chairman - WO Lyle Yolkowski - PMQ 53

Librarian - Mrs Audrey Naldrett - PMQ 49

School Board Chairman - and Rec. Council - Capt J. Diezel - PMQ 74

President of the Ladies Auxiliary - Miss Edrie Boyle - CFS Alsask  
Trailer Court

President of T.O.P.S. - Mrs Val Rix - PMQ 41

President of Station Saddle Club - Sgt Ernie Krepps - PMQ 18

Brownies - Mrs Ellen Krepps - PMQ 18

Guides - Miss Flo Menzies - CFS Alsask Trailer Court

Beavers - Rev Larry Wright - Village of Alsask

Cubs - Mcpl Gerry Erickson - PMQ 48

Teen/Childrens Hockey - Sgt Gerry Maringer - PMQ 118

Ceramics - Mrs Wilma Moore - PMQ 70

Woodshop Rep. - MCpl Al Myers - PMQ 10

Chairman Station Fund and UDEC Coord. - Lt Glenn Naldrett - PMQ 49

Tumbleweed Editor - Sgt Jerry Lefler - PMQ 80

There are many activities you AND your children can become involved in during your tour at Alsask. Some have been mentioned above, others are: BOWLING (Men's, Ladies, Mixed & Childrens'), CURLING (Men's, Ladies & Mixed) Dart Leagues, Community Council. All are worthwhile and will keep you active in our community.

Future Events:

Bingo: That time is upon us once again. Our first Community Council Bingo will go to the post on 6 Sep.'83. Cash prizes throughout c/w jackpot each month until Jun.'84. An enjoyable evening away from it all.

Community Awareness Week : 12 Sep.'83 - 18 Sep.'83 inclusive.

Monday - 12 Sep - Junior Ranks Club - 1900 hrs(7:00pm) All are welcome to our Commanding Officer's Station Brief. Snacks will be provided and an OPS tour will follow. Station personnel and their families will find this most interesting and I urge you to attend.

Tuesday - 13 Sep- Rec Centre- 1600 hrs(4:00pm) Our Fall Community, Station cleanup. Snacks will be served on completion. A worthwhile Community project. See you there

Wednesday- 14 Sep- A night for rest, Because on:

Thursday - 15 Sep - Rec Centre - Community Activities Display Night, Saddle Club, Beavers, Ceramics, Brownies, Cubs, Guides, Skeet, etc,etc. A time to see if you or your family members are interested in what there is to offer at CFS Alsask. Expertise galour to assist you..1900-2100 hrs (7:00-9:00)

Friday - 16 Sep- Junior Ranks Club - 2000 hrs (8:00pm) Dance to the live band- MRIA, food, \$10.00 per couple - Members/Associates and respective guests only - 8:00 pm to ?

Saturday - 17 Sep- Community Council Station Meet and Greet Picnic at Eyre Park from 10:00 am to 3:00 pm, food, competitive games for all(adults & kids)

Saturday - 17 Sep- WO's & Sgt's Mess, Dance to the music of the live band MRIA, food, \$10.00 per couple - Members/Associates of WO's & Sgt's and Officer's Messes and respective guests only. 8:00 pm to ?

Sunday - 18 Sep - Our yearly Terry Fox Marathon of Hope Run/Cycle. Advertising to follow.

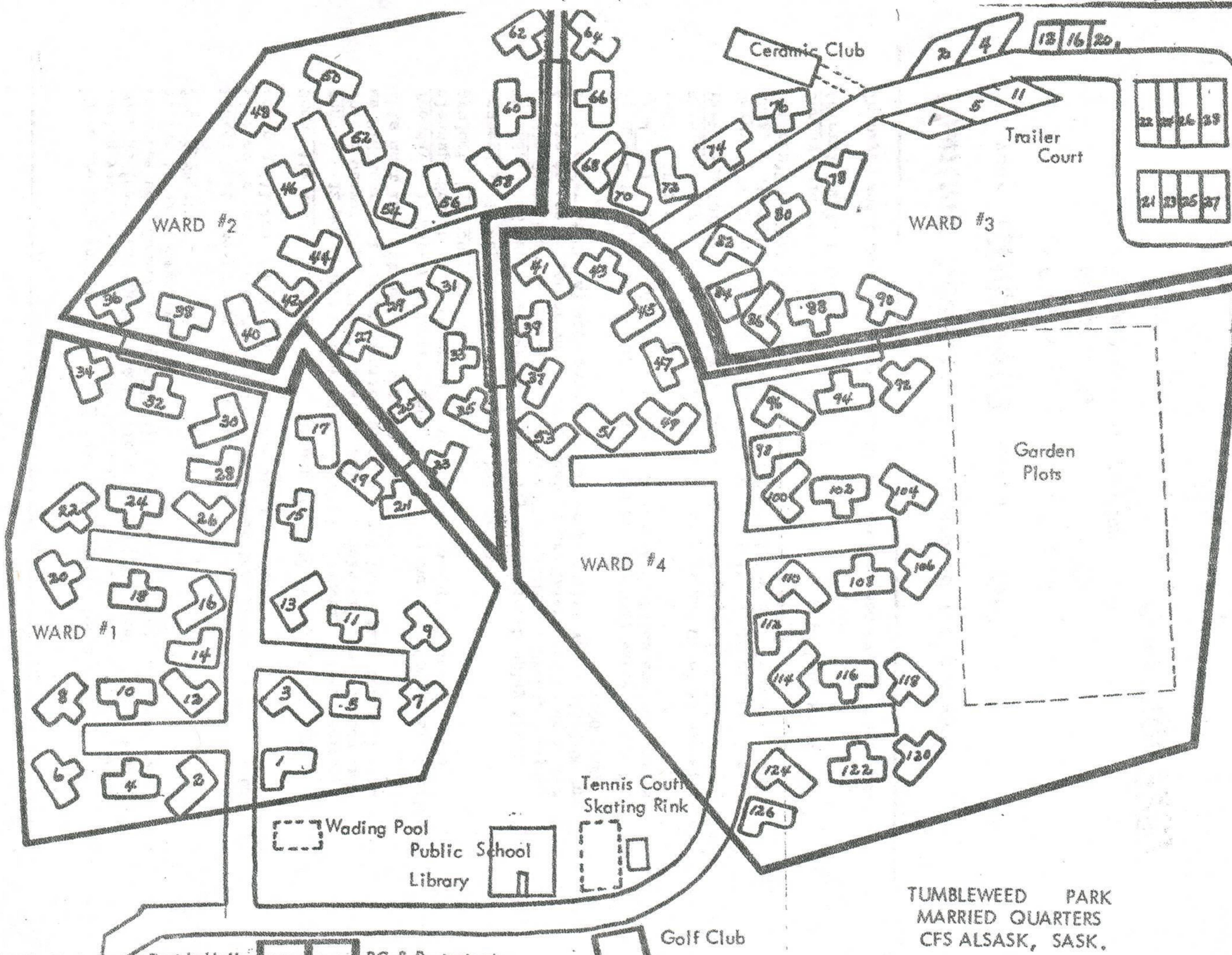
Thankyou and I hope to see you ALL at the above-named events. Mayor CC.

***Hunting Season*** is just around the corner!

See your ***GUN-PRO*** (Scotty) for:

- \* *Repairs to all types of guns*
- \* *Boresighting*
- \* *Scope & Pad installation*

Phone ***968 2287***



TUMBLEWEED PARK  
 MARRIED QUARTERS  
 CFS ALSASK, SASK.

# Tumbleweed Park Community Council

## BINGO

**CFS ALSASK REC CENTRE**

Admission \$2.00

DATE : 6 SEP. 83

(master card)

TIME : 8 P.M.

Additional

DOORS Open : 7 P.M.

cards \$.50ea or 3 for a \$1.00

This Month's Jack-Pot  
\$200. in 48 numbers

Note: each+every Bingo will be on the  
first tues. of each month.

Features: progressive + share the  
wealth bingo's. Door Prize. (1) prog-  
ressive is 5 consecutive games at \$.50  
per card or 3 for \$1.00 (2) share the  
wealth cards \$.20ea. or 7 for \$1.00

**REFRESHMENTS** available.

# Tumble-ads

Denise's Hair Design

Hours

Monday.....9:00-5:00  
 Tuesday.....9:00-5:00  
 Wednesday.....1:00-9:00  
 Thursday.....9:00-5:00  
 Friday.....9:00-5:00  
 By appointment only,  
 phone 968-2376

For Sale\* 1974 Banff tent trailer-hardtop, sleeps 6 3 way fridge, furnace, stove, good condition, \$2500.00 or best offer, phone Max, 968 2606 or 968 2696

For Sale \* Insulated truck topper for 1/2 ton, \$500.00 phone Max, 968 2606/2696

For Sale \* 1975 Buick Regal, Fully loaded, P.S., P.B., Cruise, Air, Tilt steering, Cassette. \$1500. phone Dorothy 968 2393

For Sale \* 1979 TransAm Special Edition, Black 'n Gold. Phone 968 2414

For Sale \* Girl Guide Uniform, c/w shirt, skirt, scarf, sash, belt, 2 T-shirts, 2 shorts size 14

For more information call 968 2369 after 6:00 pm

For Sale \*

3 15" Radial tires-\$25.  
 1 Ford rim- \$20.  
 1 Set Bunk Beds- \$75.  
 1 Teak Queen size bedroom suite - \$400.  
 1 Child's bike, training wheels- \$10.

Call 968 2639 or 216

For Sale \* 1978 Ford Torino-Brougham, loaded, Air, Power seats, PS, tilt steering, power windows. \$1700.00 firm, call Vic 968 2334 or loc 246

For Sale \* 12 Gauge Shotgun, Browning Auto-5, c/w ventilated rib, variable choke. \$350. ph.9682287 or local 224

For Sale \* Black Powder, Thompson-centre, .50 cal. gun. c/w all necessary accessories for shooting. \$350. call 968 2287

GUITAR LESSONS \*

Laern chords, styles, guitar tricks and songs. contact Steve Bergeron at loc 226

Tumbleweed Ad Policy

There is no fee charged for advertising in the Tumbleweed. Submit your ad to the Editor in writing, along with the number of times you wish it to run.

Wanted \* Volunteers to instruct childrens' ceramics classes. Interested parties may call the following for further information:

W Moore.....2353  
 F Neyedli....2342  
 A Naldrett...2697.

Wanted \* Bowling Alley Manager, for 1 Sep 83. Remuneration will be on a contractual basis with a statement of duties available upon request. For more information contact- G Naldrett at local 202.

7-44 INDEPENDENT SERVICE

Grease jobs, lubrication, tires, batteries, accessories, minor/major repairs. Propane tanks/vehicles filled.

OPEN 7:00am to 11:00pm  
 Restaurant adjacent  
 OPEN 6:00am to 11:00pm  
 7 days a week

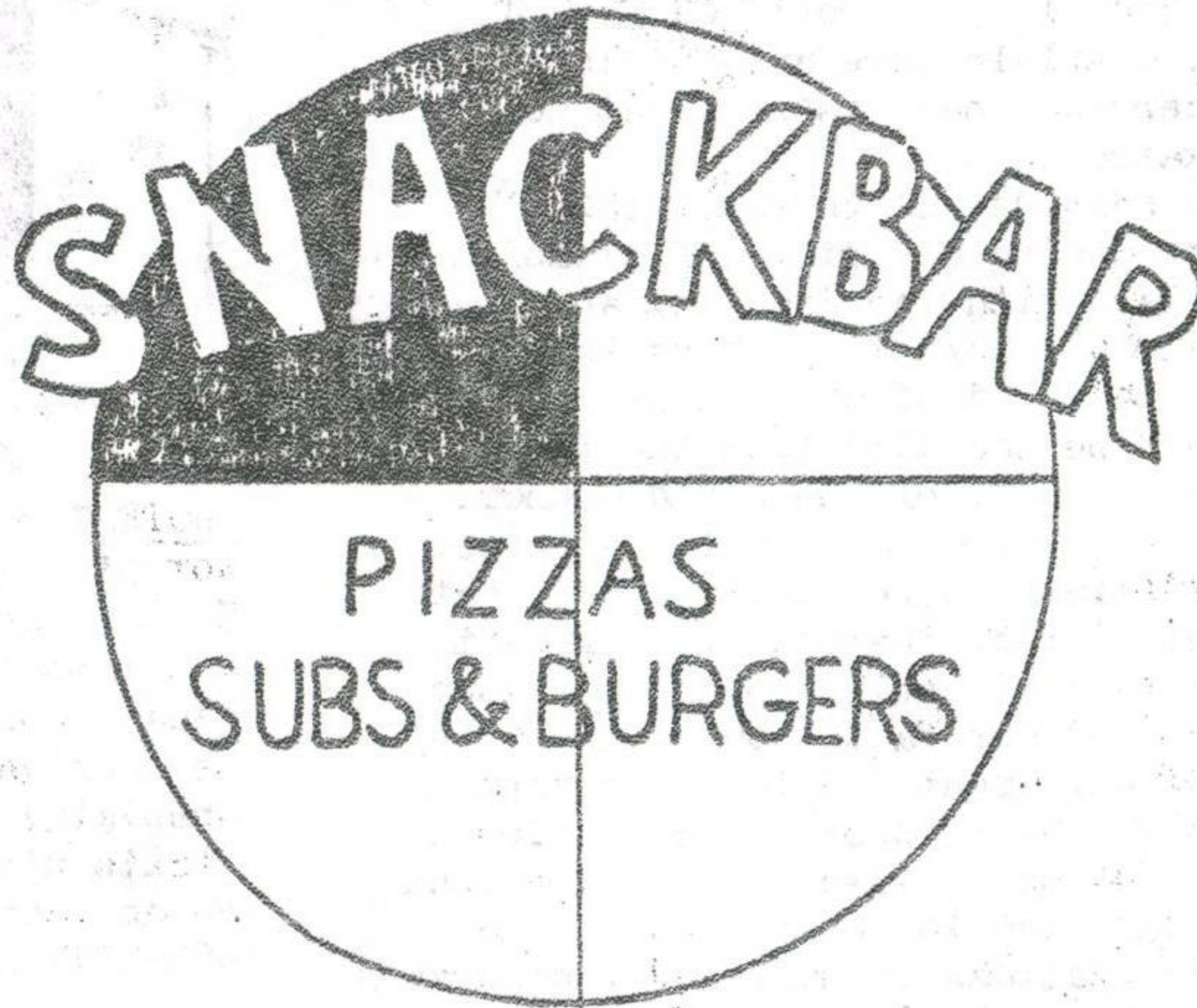
968-2606.....968-2606

SCOTTY'S GUN REPAIR

Repairs to all makes of guns. Scopes and pads installed Boresighting & sighting in Hot blueing

YOUR GUN-PRO 968-2287





OPEN 6 DAYS A WEEK

MONDAY	CLOSED
TUES - THUS	16:30 - 22:30
FRIDAY	16:30 - 01:00
SATURDAY	12:00 - 01:00
SUNDAY	12:00 - 23:00

AIR CONDITIONED  
TEL: 968 - 2662



FROM THE C.O.C.'s PEN

(Rev.) Ralph L Kleiter,  
R.C. Chapel

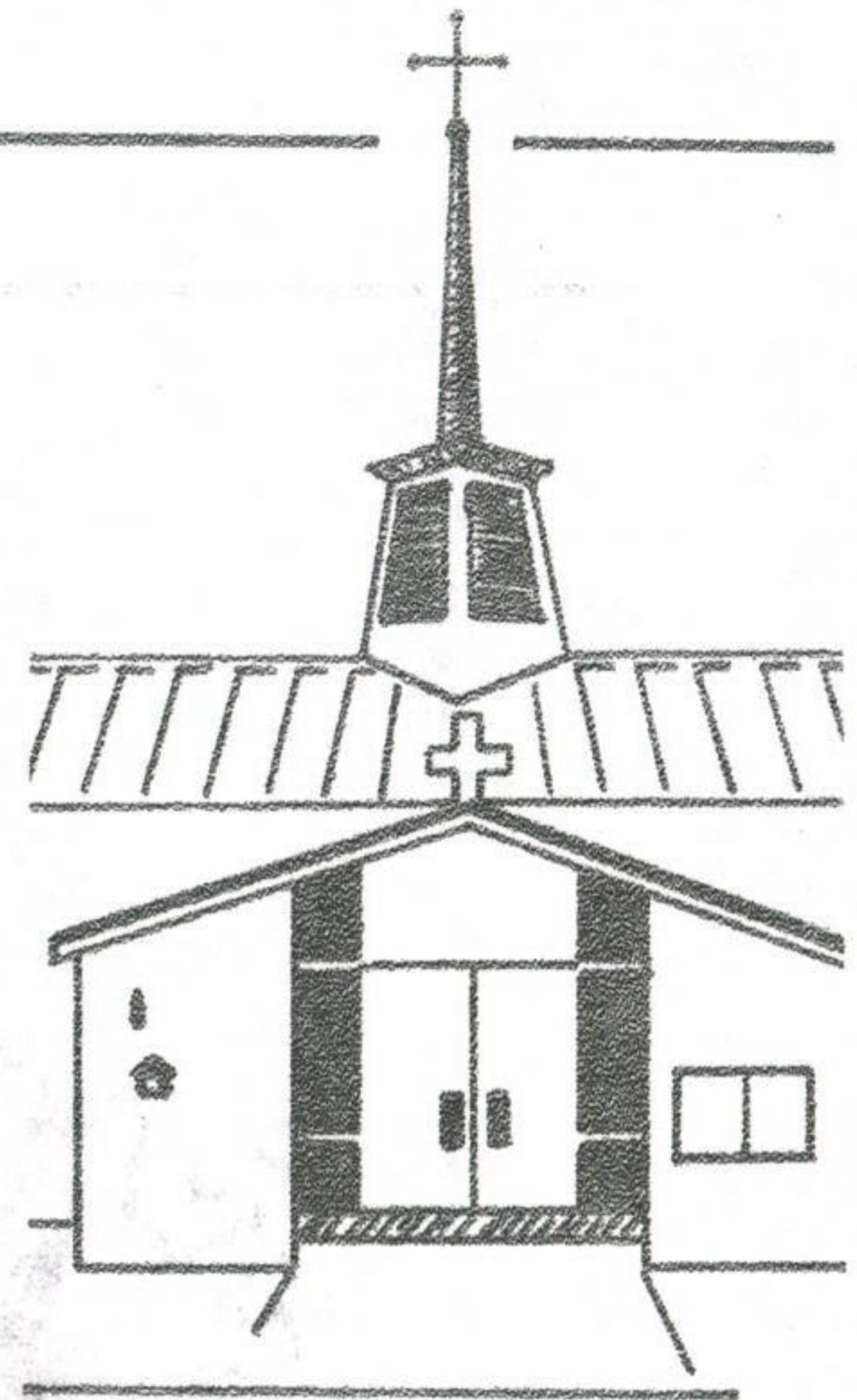
Effective August 3rd, 1983, I replaced Rev. J. Dormans as the R.C. Chaplain here at CFS Alsask. Fr. Dormans has accepted a new pastorate at Holy Family Parish, Saskatoon.

I look forward to serving all those at this station and the surrounding districts of Alsask, Marengo and Kindersley. With the 2nd Vatican Council Catholics and all Christians have been invited to examine what kind of church life we have lived: to determine the direction the Spirit calls us today. The Assembly of the World Council of Churches, which has just concluded in Vancouver also challenged Christians to revitalize and update the practise of their faith. Therefore, as a pastoral person, I will be challenging you to be about the TOTAL development of our faith communities reflecting the best of different models or concepts of church AVAILABLE TO US. In short, the challenge before Christians today is to make our own the best faith community--- a reflection of the Gospel and the spirit of the 2nd Vatican Council and Vancouver's General Assembly of the World Council of Churches.

In order to do this I look forward to your generous and regular cooperation. New styles of ministering and the continued harnessing of our spritual and material resources will be even more necessary. If you are expecting to be here for only a short while decide now to become more fully part of the life of CFS Alsask Chapel during the time that you still have here. It will be an opportunity, I hope, to have a good experience of church and maybe such a stabilizing effect will be what you and or your family needs during these hectic times.

As a C.O.C., here I welcome the opportunity to contribute to the Tumbleweed. I will try to make a contribution on a regular basis.

I look forward to meeting you as I visit the station generally on Thursdays and on Saturday evenings for the Sunday Liturgy at 5:00 PM. My telephone extension at the chapel office is 264 and my residence is 463-2306, Kindersley.



#### PROTESTANT

Worship: 7:00 PM Sunday  
Sunday School: 11:00 AM  
Baptisms & Marriage:  
Please contact Chaplain  
as soon as possible.  
Chaplain: Rev. D Nevett  
visits station on Fridays.  
Phone local 264, or  
463-2317 Kindersley.

#### ALSASK UNITED CHURCH

Worship: 10:00 AM Sunday  
Sunday School: 11:15 AM  
Minister: Rev. L Wright,  
phone 968-2396

#### ROMAN CATHOLIC

Mass: 5:00 PM Saturday  
Confession: Before Mass by  
appointment.  
Baptisms: Please contact  
Chaplain as soon as  
possible.  
Chaplain: Father R Kleiter  
CFS Alsask - 264 Thurs. only  
Residence - 463-2306 Kinder.  
Regular visits Thursdays  
RC Chapel Committee Chairman  
Ralph MacCormack

GUITAR LESSONS

Guitar lessons will be available during the summer months for anyone wishing to learn. Lessons will be once a week and where ever convenient.

The lessons will consist of learning new cords, Guitar styles, Guitar tricks and songs from many groups.

Anyone wishing to learn does not have to know how to read music but should know basic cords.

For more information contact Steve Bergeron at Loc 226 during working hours.

NOTE: THE FOLLOWING ARE SOME OF THE SONGS THAT CAN BE LEARNED:

- |                       |                            |
|-----------------------|----------------------------|
| STAIRWAY TO HEAVEN    | WHOLE LOTTA LOVE           |
| COME SAIL AWAY        | SPRIT OF RADIO             |
| TURN IT LOUD          | HELL IS FOR CHILDREN       |
| ROCKY MOUNTAIN WAY    | ROSANNA                    |
| FREEWILL              | JESSIES GIRL               |
| PETERGUN              | SPREAD YOUR WINGS          |
| GIRL                  | SWEET MADAME BLUE          |
| HEAVY METAL           | ANOTHER BRICK IN THE WALL  |
| SMOKE ON THE WATER    | ROCK AND ROLL              |
| HORSE WITH NO NAME    | TREES                      |
| CHILDREN OF THE GRAVE | AMERICAN WOMAN             |
| COCAINE               | HOTEL CALIFORNIA           |
| FIND ANOTHER LOVER    | AIN'T TALKING ABOUT LOVE   |
| PARANOID              | EYE OF THE TIGER           |
| JACK AND DIANE        | HIT ME WITH YOUR BEST SHOT |
| GIVE A LITTLE BIT     | BASTIL DAY                 |
| IMMAGRATION SONG      | YOU REALLY GOT ME          |
| 867-5309              | ANOTHER ONE BITES THE DUST |

*Steve Bergeron*  
STEVE BERGERON

# SISIP

Welcome to the second in a series of informative articles on SISIP, the Canadian Forces insurance plan (you did read the first one didn't you? If you didn't, you should).

This article will deal with SISIP Long Term Disability (LTD) insurance. This part of SISIP was considered so important that it was made compulsory for all members who join the CF as of 1 April 1982. Those of you who joined before that time still have the choice of taking LTD coverage or not, as you see fit. Hopefully, after reading this article, you will understand just how valuable this insurance can be to you. SISIP LTD pays you a monthly income in the event that you become disabled to the point where you are unable to work. It is paid whether you are disabled as a result of illness or injury, at work, or on your own time. It is even paid if you have a sky diving accident, a race car driving accident or slip on the soap in the shower. If won't be paid if you are injured while committing a crime or trying to commit suicide, but you are covered for practically any other occurrence. There are even provisions to pay benefits for dismemberment, should you be careless enough to misplace a hand or a foot or an eye. It should be noted that release from the CF on medical grounds is not a guarantee that you will receive LTD benefits. You must show that you are unable because of your disability to work at any job for which you are qualified by education, training or experience.

The amount of benefit payable under SISIP LTD is 75% of your last monthly rate of pay. Should you receive an annuity under the CFSA, or a pension under the CPP or Pension Act, these amounts will be deducted from the SISIP LTD benefit, so that the total amount you receive from all sources equals 75% of your pay. The LTD benefit is also indexed to provide increases in times of inflation.

One very important part of the LTD plan is the rehabilitation program SISIP provides. Under this program you would be provided with counselling and retraining services, as well as a possible interest free loan for equipment or services to help with your rehabilitation. It is a comprehensive program which has been enthusiastically received by those who have participated in it. One of the people who took part in the plan is now a professional opera singer!

As if that wasn't enough, SISIP will provide continuing life insurance coverage at no cost for as long as you receive LTD benefits and for 5 years after the benefits cease, (provided you had such coverage under SISIP before becoming disabled).

Right now you must be thinking this is too good to be true, it must cost an arm and a leg to join (pardon the pun). To show you how affordable this protection is, here are some examples of the monthly LTD premium.

<u>RANK</u>	<u>MONTHLY SALARY</u>	<u>MONTHLY LTD PREMIUM</u>
PTE	\$1403	\$2.81
MCPL	1901	3.80
WO	2312	4.62
2ND LT	1680	3.36
CAPT	2810	5.62
LCOL	3830	7.66

To find out how much it would cost in your case, refer to the portion of the SISIP brochure entitled "How to Calculate Your Premium", ask the pay office, or see your local SISIP adviser. And while you're at it, find out what other benefits you can get from SISIP. The next article in this series will deal with the Survivor Income Benefit portion of SISIP. But why wait for the article to find out about it? See your SISIP adviser now!

**JOHN A. SILVER SCHOOL BOARD COMMITTEE - VOLUNTARY PMQ MEMBER**

Due to the departure of Mrs. Mary Scherr, the School Board is looking for another volunteer to be a member on the committee.

The member represents parents at the School Board Committee meetings by bringing suggestions, recommendations, complaints etc., on matters related to the School.

Your cooperation and support is requested. Please submit your name to the School Board Chairman - Capt Déziel at 968-2648 or 968-2401 ext 210.

**VOLUNTEERS FOR STATION LIBRARY**

The Station Library, located at John A. Silver School, is looking for volunteers to issue to and receive books from readers using the library. The hours of operation are as follow:

- a. Monday and Wednesday from 7:00 to 9:00 PM; and
- b. one afternoon a week during School year for children attending John A. Silver School.

The library is one of the best equipped in the Forces and plays an important role both in the recreation and education of the Station Community.

On a station of this size volunteer work is very important in order to keep any sort of activities going. Your cooperation and support is therefore requested.

Please submit your name to the Station Library Officer - Lt Naldrett at 968-2697 or 968-2401 ext 202.

## Canex Corner

First off I'd like to welcome all our new people to Alask. I'm sure you have all shopped at Canex before so you know who we are.

As in most places, we encourage your patronage since the store is like a co-op, in that your profits are returned to you through your Station Fund, which supports various station activities. If you bowl, swim, play golf, are involved with guides, cubs etc., your support comes from Station Fund and they receive their funds from Canex profits and from the messes.

We offer most food lines except fresh meat. If there is something you would like to see on the shelf, let us know. We also special order case lots of food.

In our retail section we carry a selection of gift-ware, household appliances and toys. Any major item can be special ordered through our store. We use CFB Calgary as a big brother.

The services offered here is your dry cleaning. It is picked up on Tuesday mornings and returned the following Tuesday.

Photo finishing is done through our store. The company used is in Calgary and film processing takes from 10 to 14 days.

Our gas bar is located on the north-east section of the station across from the barracks. To gas up you pick up the key and clipboard from the commissi-onaire's office at the main gate. There is a cash box available for you to put your money in. Each day when we do our sales report we issue Bonus Bucks.

The Bonus Buck program works this way.:

1. We record the litres you have pumped.
2. We issue 1 ¢ per litre to you. The bonus bucks are issued in 5, 10, 25 and 50 cents therefor you have to round down to the nearest 5 ¢ i.e. 67.2 l = 65 ¢ bb
3. Your bonus bucks are kept here at the store. Any time you are in the store you can pick them up.

Bonus bucks are used in our retail section. They are treated as cash and can be used toward any retail purchase.

Bonus bucks are only issued if you pay cash, cheque or Shell credit card.

### 90 Day Credit Plan

At Canex we have a 90 day, interest free Credit Plan. We suggest any order over \$100 can save you money. It's a great way to purchase that needed item such as a deep freeze and still be able to afford your day to day items.

In closing I again say welcome and urge you to support your Canex so we can continue to provide your individual needs.

Sgt P Johnston



(\*) Indicates those who had a babysitting course. Anyone wishing to be included on this list please send your name, age, and phone number indicating whether or not you have had a babysitting course, to the Tumbleweed or phone 2327/240.

NAME	AGE	PHONE
Linda adams *	18	2346
Grant Adams *	16	2346
Shawn Adams *	13	2346
Christine Anderson *	17	2338
Bryon Barker *	13	2322
Sherry Barker *	15	2322
Cindy Belanger *	17	2215
Kim Belanger *	15	2215
Mark Griffith *	14	2660
Laurie Laughren	15	2629
Laurie Jackson	13	2687
Gordon Lodge	13	2388
Elizabeth Lodge	16	2388
Theresa Lodge	14	2388
Carmen Lefler *	13	2369
Gerold Lefler *	16	2369
Barry Myers *	13	2607
Stuart Sinclair *	13	2287
Suzanne Sinclair *	14	2287
Melissa Smart *	15	2645
Blaine Woodruff *	16	2337
Terry Shaw	15	2249
Dean Shaw	13	2249
Cindy Young *	15	2653

## HUNTING REGULATIONS

GAME	SEASON	REMARKS
MAJOR	As for ducks	Migrate south regularly. Difficult to locate in their native habitat. Dangerous when annoyed.
CAPTAIN	As for minks	Mate all year around. Easily lured by simulated call of the female.
LIEUTENANT	As for deer	Mainly young bucks. Commonly have short horns and very little tail.
CWO	Closed	Almost extinct. Closely protected severe penalties for harming these rare animals.
MWO	Closed	Only slightly more plentiful than CWO. Very short seasons in selected areas. Can be extremely vicious if aroused from deep sleep.
WO	As for squirrels (Shoot on sight)	Neither fish or fowl, some species fly, will pick up anything not nailed down. Peculiar behaviour at all times.
SGT	As for bears	Have ugly dispositions and very mean temper. Very thick skinned. Hide should make excellent footwear.
CPL	As for skunk	As all two striped animals, can raise considerable stink, when aroused. Skulls make first class ivory.
PRIVATE	As for rabbit	Breed constantly. May be shot, snared, poisoned, etc. without perceptible decrease in numbers. Easy prey due to their habit of assembly to drink.
SERVICEWOMEN	Easy prey	Normally short season in northern areas. Most active at night when mingling with herd for warmth.
CIVILIANS	Not considered game	Migratory habits. Seldom remain in one location.

### WO's and Sgt's Mess - Dates to remember\*\*

- 10 Sep All ranks BINGO 7:30 PM
- 16 Sep BML members & associates
- 17 Sep DANCE live band \$10 couple (MRIA)
- 15 Oct DANCE live band (THE JORGENSONS)
- 28 Oct Halloween Dance
- 18 Nov Live Band (THE SHADOWS)

# TUMBLEWEED CERAMIC CLUB

## ADULT REGISTRATION NIGHT

ELIGIBILITY: Membership in the Club will be in accordance with CFAO 50-20, subject to payment of the prescribed fees and approval of applications by the Club's Directors.

Members must be 16 years of age or over.

REGISTRATION DATE: August 30, 1983.

TIME: Registration: 7:00 P.M. - 8:00 P.M.  
General Meeting: 8:00 P.M. - 9:00 P.M.  
\*\*Refreshments Served\*\*

REGISTRATION FEE: \$10.00 PER ANNUM (Sept. 1/83 - Sept. 1/84)

PROVISION: Canadian Armed Forces PLCC Card must be presented when registering.

ADULT BEGINNERS CLASSES: Classes to commence on September 12, 1983, unless date changed due to unforeseen circumstances.

SPECIALTY CLASSES: Dates will be posted as soon as registration and interest is ascertained.

FURTHER INFORMATION: Call: Wilma Moore (2353)  
Fern Neyedli (2342)  
Audrey Naldrett (2697)  
- or -  
Ceramic Club (2323)

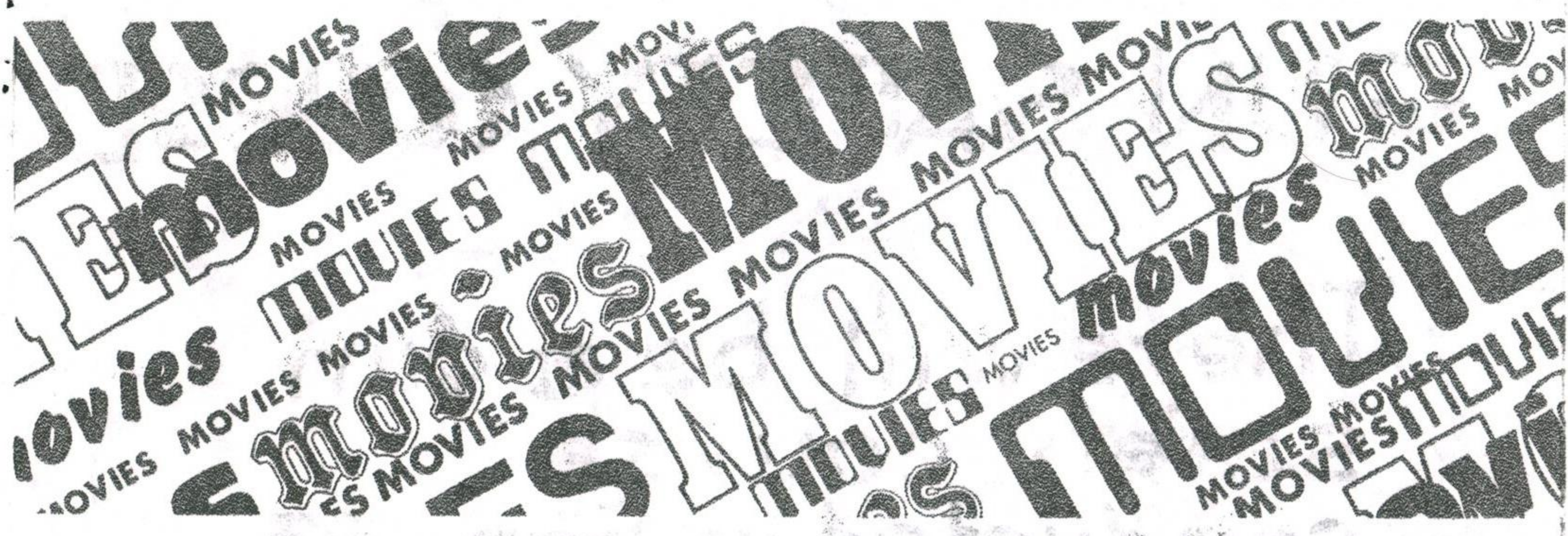
\*\*\*\*\*  
\*\*\*\*\*

## CHILDREN'S CERAMIC CLASSES

VOLUNTEER INSTRUCTORS ARE REQUIRED FOR THE CHILDREN'S CERAMIC CLASSES.

REGISTRATION WILL BE HELD IN ABEYANCE UNTIL VOLUNTEERS ARE FOUND.

INTERESTED PERSONS MAY CONTACT ONE OF THE ABOVE FOR FURTHER INFORMATION.



26 Aug.....	High Road to China.....	PG
	Love Sick.....	PG
27 Aug.....	Ichabod and Mr Toad.....	G -Matinee
2 Sep.....	Carbon Copy.....	PG
	Table for Five.....	PG
3 Sep.....	Cartoon Program #81.....	G -Matinee
9 Sep.....	Halloween 111.....	R
	Man, Woman & Child.....	PG
10 Sep.....	Apple Dumpling Gang.....	G -Matinee
16 Sep.....	Terror Train.....	R
	The Year of Living Dangerously....	PG
17 Sep.....	Chuck Jones Festival.....	G -Matinee
23 Sep.....	Max Dugan Returns.....	PG
	The Entity.....	R
24 Sep.....	Boatniks.....	G -Matinee

Admission to movies is regulated as follows:

- G-General - all ages may attend
- R-Restricted-17yrs & under require written consent
- PG-Parental Guidance required

Consent forms are available at the Guardhouse.

Movie times: Fri - 7:00 PM  
Sat - 1:00 PM

Admission - \$.50 single show  
\$1.00 double show

Warrant Officer's and Sergeant's Mess

Sunday	28 Aug.....	Movie.....	Love Sick.....	7:00 PM
Wednesday	31 Aug.....	Men's Dart League.....		7:00 PM
Thursday	1 Sep.....	Movie.....	Carbon Copy.....	7:00 PM
Friday	2 Sep.....	Mixed TGIF.....	Veal Cutlets...	6:00 PM
Saturday	3 Sep.....	Social Night	M.Y.O.P.....	8:00 PM
Sunday	4 Sep.....	Movie.....	Table For Five	7:00 PM
Wednesday	7 Sep.....	Men's Dart League.....		7:00 PM
Thursday	8 Sep.....	Movie.....	Halloween 3....	7:00 PM
Friday	9 Sep.....	Mixed TGIF.....	Steak Sandwich	6:00 PM
Saturday	10 Sep.....	BINGO	All Ranks.....	7:30 PM
Friday	16 Sep.....	BML.....	Stag TGIF.....	12:00noon
Saturday	17 Sep.....	DANCE.....	Band MRLA.....	Tickets at bar
Monday	19 Sep.....	Ladies Night.....		8:00 PM
Friday	23 Sep.....	Mixed TGIF.....	Chicken & Chips	6:00 PM
Monday	26 Sep.....	Ladies Dart League.....		7:00 PM

**7-44**  
*Ind. Service*

**7am - 11pm**

**968 2606**

# GUN SAFETY COURSE

There will be a gun  
safety course  
conducted in Sep 83

Anyone interested  
contact:

MR PYTLIK  
at local 249

or

SGT BARKER  
at local 205

AS SOON AS POSSIBLE

FOR AGES 12 YEARS AND OLDER

# **COLOUR ME**



**A policeman is your friend.  
L'agent de police est notre ami.**