

ROCKCLIFFE

# RECORD

VOL. 1 NO. 1

DECEMBER 19, 1952

## A/C/M DICKSON, R A F, VISITS ROCKCLIFFE



AIR CHIEF MARSHAL SIR WILLIAM DICKSON, C.A.S. - Designate of the R.A.F. accompanied by F/L D. DOYLE, Commander of the Honour Guard, inspect the guard at Rockcliffe.

by F/L Bernie Kuhn

On Saturday the 6th of December, Rockcliffe had the honor of being host to A/C/M Sir William Dickson. CAS-designate of the RAF, while he visited PE and CEPE. Needless to say, both these units were spotless in their best VIP clean-up jobs.

A/C/M Dickson was on the homeward leg of a round the world tour before taking over as RAF CAS. He had particular interest in PE and CEPE because during his career he spent considerable time in similar establishments in the RAF. Air Commodore Revington, the RCAF's UK Air Liaison Officer, accompanied A/C/M Dickson to Rockcliffe; F/

L Don Doyle with the help of LAC Belanger had a sharp guard of honor which met the high-ranking visitors when they arrived in Dak 1000.

At PE A/C/M Dickson chatted with W/C Ross and was briefed on PE's work. Then the rivals of Karsh in the portrait studio had their chance and photos in black and white and color were taken. The photo building was shown off to the visitor in a quick tour, and the A/C/M seemed particularly interest in some of the new machines.

W/C Frizzle met the visitors at CEPE and gave them an explanation of the functions of the unit and its several detachments, with special reference to

the UK Ministry of Supply in CEPE Climatic Detachment. Some of the current experimental projects and equipment were described to A/C/M Dickson, such as S/L Russell's water detector, the head-mike test stand, target tow installations, and the ro-theta position and homing indicator. A special feature was the demonstration of a high altitude pressure suit which is a man-from-Mars effort. F/L Obie Philp was specially dressed for the occasion, being in the suit. W/C Frizzle and S/L Christie conducted A/C/M Dickson around the CF100 aircraft, in which keen interest was shown.

A/C/M Dickson did not have time to look into every section of the units visited, but those cleanups were a good effort anyway. It was a pleasure to have seen the RAF CAS-to-be.



AIR MARSHAL W.A. CURTIS, C.A.S. R.C.A.F. and AIR CHIEF MARSHAL SIR WILLIAM DICKSON, R.A.F.

# THE RECORD

Published weekly by the personnel of RCAF Station, Rockcliffe, Ontario through the kind permission of the Commanding Officer.

**Editor-in-Chief**  
**Managing Editor**  
**Associate Editors**

**News Editor**  
**Business Manager**  
**Advertising Manager**  
**Photo Editor**  
**Art and Layout**  
**Sports Editor**  
**Printing and Circulation**  
**Woman's Page Editor**  
**Contributors**

**S/L AJ Simpson**  
**F/O RRJ Genno**  
**F/L B Kuhn**  
**F/O JE McFadden**  
**F/L LJ Ryan**  
**F/O G Bennett**  
**F/S EF Wolfe**  
**WOI EE Crisp**  
**Sgt F Duggan**  
**F/O Lefevre**  
**F/L R Boucher**  
**Mrs Jan Simons**  
**As Bylines**

The views expressed by individuals in any articles are not necessarily those of the RCAF or of the staff of the Record.

## ROCKCLIFFE "RECORD"

*A New Paper, a New Policy,  
a New Staff.*

In this first issue of the Rockcliffe Record may be seen elements of the high standard which your editor and his staff are determined to maintain in their efforts to present to their readers a weekly record of news covering all phases of activity at RCAF Station, Rockcliffe.

The fact that an entirely new staff is embarking upon this undertaking should in no way be construed as a reflection upon the splendid efforts of their predecessors, the staff of the Rockcliffe News. The few who produced the "News" did so under considerable difficulty, and with little or no support, and it should be remembered that without their interest and determination this station would have had nothing at all in the way of a newspaper. Their efforts are deserving of the highest praise.

Despite the handicaps under which they have laboured in the past these few stalwarts have assured your Editor of their full co-operation in the production of the "Record", and will continue to be associated with efforts to bring station news into your homes and quarters. Thank you, Larry, Joe, Frank, and the rest of you.

We, for our part, will strive to the utmost to produce for you a publication worthy of the history and prestige of this station.

However, one word of warning. A paper of any description, be it daily tabloid,

weekly newsheet, or monthly magazine, can be only as strong as its subscribers choose to make it. We have set up the organization to ensure that the news is collected, and the paper is printed and distributed, but the material must come from you, the members of this station. Therefore we earnestly ask for your interest, your support, and your co-operation, so that you each have a personal part in the creation and the continued success of the "Record".

We have a Station of about 1500 service members and 700 families. As far as off-duty activity is concerned we are self-sustaining . . . a city within a city. The married families are represented by their own duly elected Mayor and Council, whose stewardship embraces numerous activities the success of which is due to your consistent patronage. Surely so thriving a station should be able to support a newspaper of its own.

There is a natural desire on the part of each one of us to know what is going on around us. Local news is a thing we all enjoy, and the daily happenings on a station the size of Rockcliffe affect all of us either directly or indirectly.

Here then is a wonderful opportunity for everyone to "get into the act". You need not be a professional writer to be of help. Simply let us have your news, your articles, your poems, your stories, anything at all . . . our staff will do the rest. And should sickness or misfortune befall a member of your family, or a close friend, please let us know. It's not morbid curiosity, but a desire that every-

one on the station should be with you in your hour of need, and until that time arrives you can never fully appreciate the priceless comfort and consolation of having others share your burden.

All in all there are numerous sources of valuable material, so let's get together and see what a good job we can do.

There is no material reward for this work, but simply the inward satisfaction of knowing that our individual efforts are helping to establish a real live station newspaper, a valuable contribution to the life of our community.

## LETTERS TO THE EDITOR

You, the readers, will write this column. All letters will be considered for publication, but the editor must reserve the right to exclude material of a libelous nature or matter which contravenes Air Force regulations or military security.

Correspondents may use a nom-de-plume, but letters of a controversial nature will not be printed under a nom-de-plume unless the editor is aware of the identity of the writer.

This is the place for a vigorous interchange of opinion. We look forward to hearing from you.

The Editor,  
The Rockcliffe Record,  
Station Headquarters,  
RCAF Station Rockcliffe.



THE STAFF OF  
THE RECORD  
EXTEND TO ALL  
ITS READERS  
BEST WISHES FOR  
A MERRY  
CHRISTMAS  
AND  
A HAPPY  
NEW YEAR !

# MISTLETOE AND BLISTERED HEELS By F/O Sandy Jonson

The command seems confused, but individual spirit and determination is running high. The sizing is slip shod, the dressing is absent, but the regiment is on the march — the royal one thousand nine five two regiment of Ottawa Christmas shoppers.

Promise yourself some entertainment this year. Merely by eliminating your own shopping by four days prior to the 25th you can rest for two days and then journey down town to observe a most peaceful sight — your fellow man, steel-jawed and grim-eyed hellbent in his quest for symbols to prove his good will toward men. However, don't spoil your afternoon of character study by getting cynical over the distorted motives that have prompted this mass gathering in the business section. Recall to your mind that you're just here to look, not to shop and the thought will make you feel Christmasy all over.

Join the fray that's surging into the city's biggest store and watch the tactics of various first class privates in this volunteer regiment.

Note the panzer type approach of some male shoppers. First of all it's obvious to a blind man that they're in a desperate hurry. On entering they land against the revolving door with an impact that sets it under violent rotation sufficient to create partial vacuums on either side for several minutes. Incidentally that's their only useful contribution — the door doesn't need a push for the next half hour. From the entrance without a break they strike off down the aisle with seven league strides, straddling slowly circling tots and glancing off the solid, slightly protruding, posteriors of middle aged lady shoppers, as they stand, bent over the counter, engrossed in the puzzling problem of whether to take the red string with the silver thread or the silver thread with the red thread.

Now these storm troopers of the regiment are imbued with one idea — to get the most things in the shortest time. Consequently when you spot one, you can really reveal his sharpest form if you impede his way a little. Try to guess his route and when you can, place yourself so that you can step on the escalator just one step ahead of him. Because you're blocking him he is unable to augment his speed by walking on the

escalator in the direction of its motion. This will frustrate him much worse than if he were attempting descent on an ascending stair, and he will show it by stamping, shrugging and fidgeting. He may try to circumvent you by taking to the side rail since space does not permit passing on the steps, but this is unlikely. One such shopper did one time on the upward run of one of those old, narrow, shallow step type of escalator. All went well until he caught his foot in that acute angle where rail meets ceiling. He sprawled helplessly in the path of the lady he was passing, she fell over him, and in the panic of the moment, though sincerely trying to help, he foolishly grasped her round the legs. Unfortunately he had no such hold on his fellow victim's garments, so they, influenced by the relentless motion of the escalator, continued ever upward, despite frantic opposition from the wearer. When his presence of mind finally returned, and he released his grip, it was too late. A great crowd gathered, gentlemen in dark blue uniforms appeared, and the luckless shopper still recalls the Christmas season made everlasting memorable for him by an appearance in court on a charge of assault.

The family unit on a shopping tour is a touching scene. Mother is usually guiding a four or five year old by the hand while father is carrying the two-year-old baby. Father puts the baby down now and then to rest a numb arm and with resolute, bow-legged step and outstretched hand the little form toddles for the costly crystal or the table lamps. Wearily father resumes his role for it's easier than chasing and arriving, perhaps, a little too late. This is Christmas shopping in it's most trying form. Baby sitters at president's salaries are cheaper.

Now move on to another member of the shopping throng. This gentleman is one of those who, for some reason, just can't complete his list without a visit to the lingerie counter. From yards away you can sense his discomfort. To increase it, provided he's more or less alone at the counter, go up to a spot about three or four feet to one side and just a little behind him. Stand there motionless with your hands in your pockets, put a half silly grin on your face, and look back and forth from his eyes to the bit of lace under consideration. If you are of the female sex it won't be much sport, for

your shopper will vanish in a gurgle of embarrassed mumbling before you're really started.

Yes there's hardly any limit to the variety of this shopping parade. There are spendthrifts and bargain hunters, crowdors and retreaters (poor souls), means ones and kind ones, and collectively they make up one of the most determined armies on the earth. Perhaps the most outstanding characteristic, since it is common to all, is the fundamental spirit. Outwardly the battle cry may appear to be Panic in the Streets, but in the hearts it is Peace on Earth.

## FOURNIER VAN & STORAGE

LIMITED

Crating, Cartage & Storage

For personal service to  
members of the RCAF call

GROUP CAPTAIN A. H. WYLIE

4-9660

117 Besserer St.

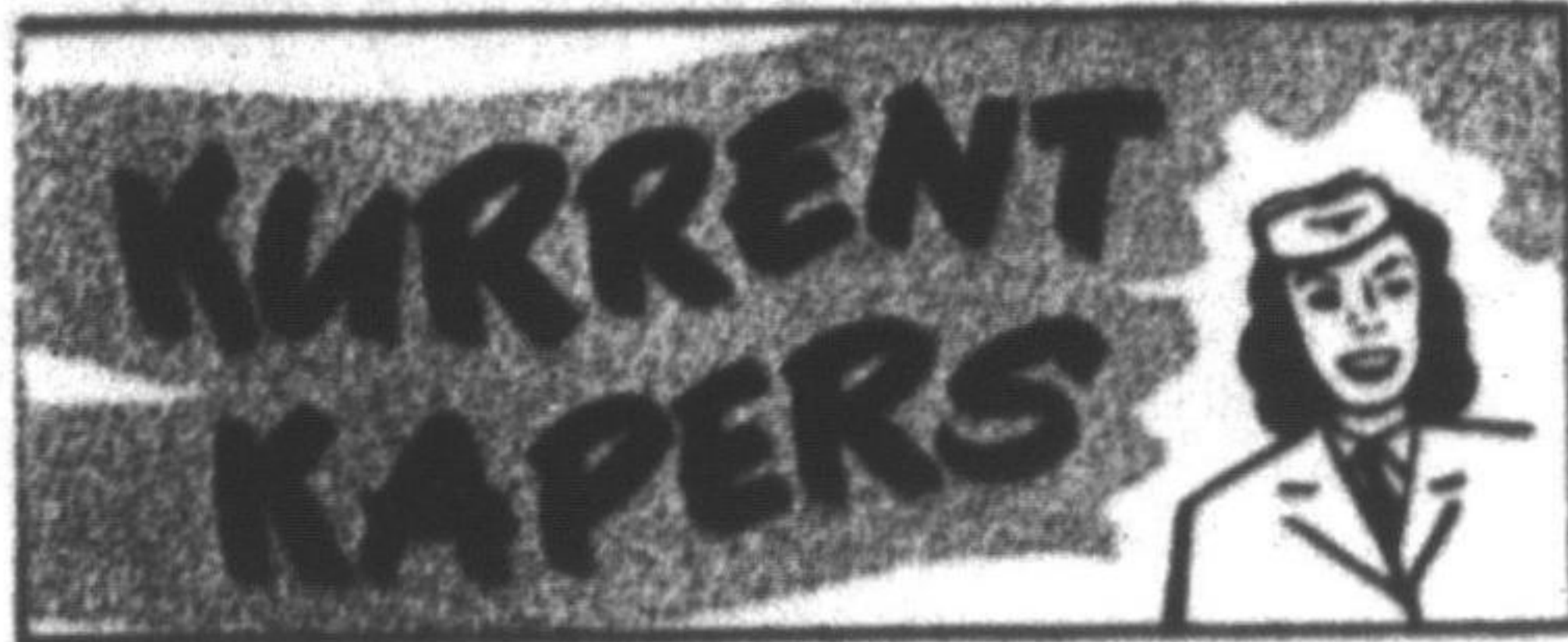
## WARNING TO PARENTS - SNOW CLEARING OPERATIONS

Parents are warned that it is extremely dangerous to allow children to play near the heavy vehicles being used in snow clearing in Married Quarters Areas.

The operators of the Heavy Snow removal equipment cannot see all round, and can hear nothing above the noise of the engines.

It is appreciated that children like to watch this equipment in operation, but some of them have been seen tying sleighs to the backs of the vehicles, and also standing dangerously close.

PARENTS: PLEASE BE WARNED.  
THESE PRACTICES ARE EXTREMELY DANGEROUS. TAKE STEPS NOW TO AVERT A POSSIBLE TRAGEDY.



by

A. W. O'Byrne                      A. W. MacRae

We would like to express our congratulations to Jackie Nichols for recently becoming a God-Mother. Mother, baby, and God-Mother are all doing well.

Question of the week: Who is the happiest A. W. on the station?

Answer: Sis Barube. She has just been posted to France. Parlez-vous Francais?

We hear that Smitty, the one from Quick Stream (Swift Current) has gone on a diet—she's given up all third helpings and worse than that—eating off other peoples' plates!

We see where two more excitement the footsteps of the "Human Polar Bear" and have been sliding down fire-escapes. They don't get paid for it though!

We hope that Cpl. MacKensie has been practicing for the party on Thursday night. She is going to be Santa Claus. Some of the girls thought that Pat Glubber would be a good Santa because she has a red nose!

#### POME

And then there's Sal  
She's quite a gal  
But someone a note should send her  
About signs on doors --  
There's a difference in gender!

We interviewed Lillian Sinclair who rains from Sunny Vancouver to find out what her impressions was when she saw snow for the first time last week. She replied, "Hot Spit! This is something I can write home about." The snow must have affected her because she is in the hospital now.

The basketball team plays their first game on Thursday night against Uplands. We should win—their shortest player is only 6'3".

Two new Airwomen were posted to Rockcliffe this week. A. W. Nelson from Chilliwack, B. C. and A. W. Young from Newfoundland.

#### Kurrent Korn

Smitty: "It's hard drinking soup through a mustache."

McKee: (she doesn't have one) "Why."

Smitty: "It's quite a strain."

#### CARE OF FLOORS ON THE STATION

The following is a copy of Construction Engineering Instruction No 21 and is of vital interest to all conscientious housekeepers as well as those concerned with floors in the hangars and office buildings.

#### ASPHALT & RUBBER TILES AND LINOLEUM FLOORS

The above types of floors should not be washed for two weeks to allow the mastic cement to harden. At no time should the floor be flooded; a damp mopping will suffice.

For station floors, asphalt tile cleaner is now available from supply (CAP 10-33C/772). For married quarters, use a cleaner recommended by one of the recognized leading manufacturers of the above flooring materials. Other cleaners containing alkalines, abrasives, or solvents, (i.e. lye, varsol, turpentine, gasoline and various detergent oils) are not to be used. The RCAF Fire Manual, CAP 123, states that *inflammable mixtures* are not to be used for cleaning purposes.

Only water-base liquid waxes are to be applied. Paste waxes are not suitable as they contain solvents such as benzine, and/or turpentine, etc. that will destroy asphalt, rubber and linoleum. In the latter two cases the action is much slower than with asphalt tile, but it will break down the surface in time.

#### WOOD FLOORS:

A dry-damp mop is adequate for light cleaning of wood floors. Steel wool and a non-inflammable solvent should be used to remove oil spots, stains and excessive layers of wax. Wood floors, generally, can be cleaned and brightened up with a succession of steel wool and wax applications. Avoid flooding and the use of strong soaps and detergents as these bleach, warp and raise the grain which will destroy the finish. Paste waves are preferable for wood floors. Two thin coats are more suitable than one thick coat.

#### TERRAZO, QUARRY TILE, CONCRETE AND OXYCHLORIDE CEMENT (MARBELETTE) FLOORS

Terrazo and concrete are inert to most cleaners but caustics and solvents should not be used on the oxychloride cement. Fine steel wool should be used on smooth surfaces to remove dirt.

(continued on page 14)

#### CAROL BY SOMEBODY IN FLYING CONTROL

Twas the night before Christmas,  
And high in the tower  
The DCO slumbered  
So late was the hour.  
When out on the tarmac,  
Arose such a clatter,  
He sprang from his chair  
To see what was the matter.  
And there in the midst of 27 so bare  
Reposed a Dakota with tail in the air.  
The sight, so unusual, unnerved him for fair

To see a Dakota with tail way up there.  
It destroyed his illusions,  
That flying was fun,  
After his tour in the tower was done.

Then out of the wreckage  
Staggered a figure—  
Waving a bottle complete with a jigger,  
Who chanted this song  
Waving bottle on high,  
I said we would get here,  
I did, didn't I?

We're just like the Royal Mail,  
We always get thru -  
It's 412 forever,  
Just lay on the brew.

Let's have a party,  
Forget all this mess,  
Remember our motto -  
"Press on regardless".

So waving the bottle,  
They vanished from view  
Said the DCO soundless,  
Now what do I do?  
If I call for the Crash Crew  
They'll think I am batty  
It must be a pipe dream,  
I'm sure that MacQueen  
Said that the weather'd be down to the deck

Clear from the Yukon  
Down to Great Neck.  
So he picked up the phone  
And on Sked "F" did chatter,  
Arrival report-said a voice, what's the matter?

Dakota, unknown, pilot named "Moe",  
Passenger, airman, just call him "Joe".  
Landed at Rockcliffe, with full sack of plunder  
It may be St. Nick, it does make one wonder.

Arrival reported, duty done  
Back in that hard chair,  
Climbed the big bum -  
To dream of Christmas serene once more  
Secure in the knowledge  
That he knows the score.

## PERSONALITY PAGE

### W/C RI THOMAS

W/C RI Thomas, born in Liverpool, England of Welsh parents, came to Canada at the age of five to settle with his family in Victoria, B.C. There he gained his Junior Matriculation in 1924 and set out to find his place in this world. This task entailed working for the British Columbia Forestry Patrol for a season and for the (now) New Method Laundry for eighteen months before joining the Air Force.

But join the air Force he did in February, 1927 at Jericho Beach, B.C. where he became an Air Frame Mechanic. It wasn't long before he was sent to Camp Borden to train as a pilot, graduating as a sergeant in the fall of 1928.

A biography of W/C Thomas is like a history of the RCAF. During his almost twenty-seven years in the service, the W/C has seen and has been the transition from the old to the new. He witnessed and felt the pangs of the economy drive in 1932 when pilots were allowed twenty minutes flying time per week and but a few selected could remain in the Air Force. He participated in the expansion when the RCAF grew to its wartime proportions and made its mark upon the world, when it took on the jobs of photographic survey, transport, search and rescue and the host of other tasks it now performs.

He has flown in the old open cockpit biplanes such as the Avro 504, received his seaplane training in Vedettes and covered the north in a Fairchild on floats. He piloted the Delta, the prototype of aircraft to come, and patrolled both oceans in the Cansos of today.

His time in the North, flying first on Forestry Patrol in northern Saskatchewan, then on a meteorological detachment at Fort Smith, forecast the years he would spend on photo, first on detachments on the west and east coasts and then as CO of 22 Photo Wing in 1947. While at Fort Smith,

W/C Thomas and other members of the party, W/C Paul Sorenson and S/L Lou Thompson, performed the amazing feat of flying every day from 1 November 1936 to 2 March 1937 off a snow-covered strip in a wheel-equipped Fairchild

During the war, in which the Wing Commander received his commission and was promoted to his present rank within three years, this type of endurance was called upon many times. His duties were too many during the war years to list them all here. They ranged from ferrying aircraft from the east coast to the west, to becoming CO of west coast stations and St. Hubert. He had moved so many times that

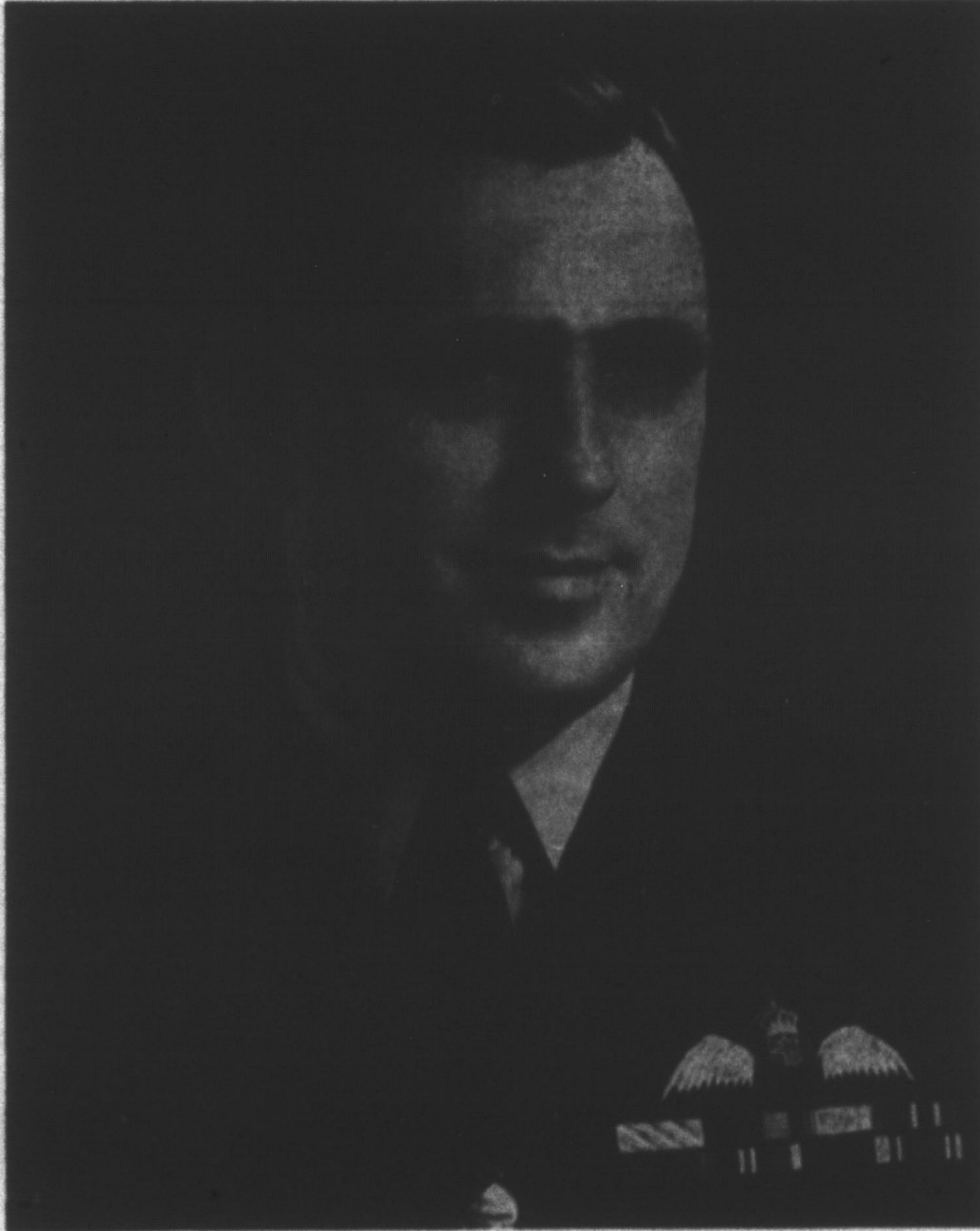
his wife, (whom he married in Jan, 1930) was usually left stranded on a Station shortly after she arrived.

The pace slowed after the war. With stations closing down all over the country the Wing Commander became C Ad O at Trenton in 1946, CO of 22 Photo Wing in 1947, SASO at ATC Headquarters in 1950 and finally C Ad O at Rockcliffe in 1952.

Here his efforts have been noticeable, not only administratively but also in the field of sports and hobby craft. Back in his Victoria days W/C Thomas played on a champion soccer team for three years. Later the Winnipeg Elks Baseball Club played their way to the top with the aid of our CO. Here at Rockcliffe, still an avid fan at both

games, he finds time to play badminton, tennis and golf besides visiting the streams with a fly rod in his hand. The hobby shop, also, lists both the wing commander and his wife as regular members.

Presently building a house in Ottawa, W/C Thomas, still young in every respect, finally seems ready to stay in one place. It is doubtful, however that this man who has given so much of his life to the service will ever really leave it entirely.



# WOMAN'S PAGE

by JAN SIMONS

Hi Mary—

Thought you would like to know, this is our first issue of the new paper. I'm sure you will be interested in the fact that as many different items of interest as possible are going to be covered. If you have something you wish to contribute, don't hesitate to send it along—maybe a funny episode, or an article you think someone else would enjoy, possibly an informative item on anything that women buy, use or do. In fact, just anything at all that will help make this **YOUR PAGE**.

**YOU WERE** in the throes of trying to lose weight the last time I heard from you. Make slimming an all day job. Too many women exercise faithfully for 10 or 15 minutes a day, and then spend the next 10 to 15 hours undoing the good work by moving, sitting and standing incorrectly.

Backward kicking is marvellous for slimming the hip line. Do it 50 to 150 counts. But don't stop there and let your muscles go limp and lazy. Something you can do during the day is stand with your feet parallel and about 6 inches apart. Let your hips jut out in back. Try to see how badly you can make your hip line. Then keeping the knees perfectly straight and still, pull up the front thigh muscles—this is so you won't push yourself too far forward when you begin working the muscles on the back of the hips. Now, draw the hips together hard, slowly and accurately. Finally, tuck the hips under. You should be able to walk with the hips held together and under. Rolling is also effective and not too strenuous in slimming the hip line.

Both exercises tend to flatten the tummy, too. While standing, sitting and moving during the day, frequently pull up the lower abdomen muscles and soon it becomes a habit and seems natural and effortless.

For that waistline keep your twisting and bending exercises, but they will avail you nothing if you slump the rest of the day, you know. Every minute stretch up your trunk muscles. Don't tense about it but just see how you can elongate the line from the ribcage to the hips. Incidentally that upstretch through the midriff gives you a much better bust contour.

If you want to avoid sagging tissues through the bust when dieting or losing weight, try this exercise: Kneel on the

floor. Have your knees several inches apart and hold your arms out at the sides, shoulder-level. Swing the left hand backward to the right heel, return to the starting position and swing to the other side. Be sure that you keep your hips tucked under at the same time.

For legs like Lana Turner walking or running in low heeled shoes is a great help. The circular kick is recommended by many as a leg beautifier.

Actually there are so many different exercises you can do that I could make this a book on the subject of getting back your girlish figure. However, you've probably had enough for this time.

**THE OTHER** day I overheard a man discussing women in general. One thing he said amused me very much and you should enjoy it equally as much. This may not be verbatim, but it went something like this: "A thing that awes me is the efficiency of a woman in a garden. She can tie up a climber in 3 minutes. It takes a man 50 minutes. Most of the time is occupied in: Asking where the raffia is. Announcing that he has pricked his finger. Going into the house and upstairs to get the iodine. Shouting inquiries as to where the iodine is. Looking for the iodine. Not finding the iodine. Coming downstairs, going into the garden, asking his wife to go upstairs and help him find the iodine. Asking where the raffia is." What say you? Don't you think he may have exaggerated a wee bit?

**LAST NIGHT** none of us seemed particularly hungry for a huge meal, so I whipped up a snack. Was sort of tasty too. Heated a can of salmon, one of peas, and one of mushrooms and served it on toast. It would be good baked but use mushroom soup, instead of just plain mushrooms, for a cream sauce. Why don't you try it and let me know how your family enjoy it?

Here's a recipe I'm going to experiment with soon: Heat 1 can of Shrimp (or Crab meat or Lobster), and 1 can of mushroom soup in the double boiler. Serve on toast. Friend husband likes mushrooms, so we have them fairly often.

My mother gave me Aunt Lizzie's cook book when she came for a visit. It's 67 years old, and I must say, they certainly were very versatile years ago. There is everything imaginable in that

book. Found an old Mince-meat recipe, that sounds most interesting. Here 'tis: As written: Two pounds of lean beef, two pounds of beef suet, five pounds of apples, Three pounds of raisins, Three quarters of a pound of citron, One grated nutmeg, Two tablespoonsful of mace, Two of cinnamon, One of cloves, One of allspice, One teaspoon of fine salt, Two and one half pounds of brown sugar, One quart of whiskey. **ONE QUART — WHISKEY !!** Oh boy, could be kind of potent.

A FEW days ago, I was talking to Mrs. Thomas, you remember — the C. O.'s wife — and as women's conversations go, we finally got aound to recipes. Apparently she has a really good one for Chocolate Cake, and since it seems a bit unusual as far as ingredients go, thought I would pass it on to you. It can be made in a hurry, too. 1 cup Miracle Whip Salad Dressing (This is what I felt was different from most cake recipe's), 1 cup white sugar, 2 cups flour (level, 2 tps soda, 3 tbspc. cocoa (large), pinch of salt, 1 cup cold water, vanilla. Cream the Miracle Whip and sugar well. Sift dry ingredients then add to first mixture alternately with water. Add vanilla. This batter will be thin. Use 9" x 9" pan; bake 45 minutes at 325 to 350 degrees. Here's the icing that Mrs. Thomas uses with that particular cake, called Cream Candy Icing. 1 cup brown sugar, 1/2 cup brown sugar, 1/2 cup milk, 3 tbspc. butter. Boil these three together for scant three minutes. Cool. Whip in icing sugar till the right consistency to spread. To stretch this for a thick icing, add more sugar and a small amount of cream. It sounds very delicious, and as soon as I try it, I'll let you know how my effort turns out.

**JUST HAD** a thought, Mary, since I write you each week, I'll enclose a recipe every time — each one from a different person on the Station. That way you should get a really good collection of tried and found true recipes.

Well, this is the end of my epistle for this week. Time to go to bed anyway. Good-night.

As Ever

Jan.

P.S. A thought — The art of being well-dressed for most of us is a skillful blending of the arts of make-up, make-over and make-do.

# BONNE SANTE

This is the first of a regular feature to be carried in this newspaper. Also its author is the first contributor to insist upon remaining anonymous in spite of our entreaties otherwise.

..Perhaps one of these days he will give in, but until then he will answer your requests for drink recipes (and menus) anonymously. How about it? Any drink formula or point of bar etiquette that elude you? Write "Bonne Santé", care of the Rockcliffe Record and our expert will gladly help you.

One could hardly choose a more appropriate occasion on which to embark upon a column of this nature than the Christmas season now in our midst. It is a time of good-will and convivial fellowship stimulated by hallowed memories of the past in which our hearts and doors are open to all. It is a time in which we are given an opportunity to test the ingenuity of ideas conceived during moments of inspiration.

Strange to say however, practically every one of us, particularly in the role of "Host" or "Hostess", suffer from a slight touch of "inferiority complex". It is quite possible that many will derive a certain degree of consolation in knowing there are others with whom this predicament may be shared. And yet, it is a condition which may be easily overcome.

It would be safe to assume that in the art of drink-mixing, either professionally or privately at home, there are scarcely any two individuals who follow the same rules or recipes but who, surprisingly enough, achieve pleasing results. It is simply a matter of imagination plus the injection of a little personality which indelibly marks the success of the host or hostess as well as magnifying the gratitude of the guest. Thus, a glass of ordinary beer may be made both to look and taste like the proverbial million dollars simply by serving it in a Stein or a glass of unusual design. Likewise with cocktails or other drinks.

Time was when the serving of alcoholic beverages was enforced by a system of rigid protocol which, in the light of present tendencies, would be beyond the understanding of the average layman. For instance, certain types of wine would be served in specially coloured glasses — green, yellow, orange

and many others, dependent of course, upon the brand being served. With the exception of a few ultra-exclusive places however, such practices are seldom adhered to these days. Simplicity is now the keynote. The chances are that the guests you will be entertaining will be plain everyday people like yourself.

I do not wish to imply that the day of the connoisseur is a thing of the past, but there are certainly very few around. Unless they are personally tendered an engraved invitation suitably embossed with an exact replica of your family crest, there is little likelihood that any of the hoi poloi from the gilded mansions of New York's Park Avenue will be dropping on you.

Having satisfied ourselves on that particular score, let us settle down and absorb an idea or two which possibly may be of some help either in the near or distant future. Neither time nor space will permit too much to be described on this occasion. It is sincerely hoped however, that enough interest will be shown to encourage us to enlarge upon this subject in subsequent issues. And so here we go. These cocktails are really fine stimulants BEFORE a meal.

## A. WHISKEY SOUR

- ½ ounce Lemon Juice
- ½ " Syrup or Sugar
- 1½ " Rye

Place in cocktail shaker and add soda water to taste. SHAKE WELL and pour. Decorate with half slice of orange. Served well chilled.

In the event you expect company and wish to make a small batch, you may follow this recipe.

- 6 ounces Lemon Juice
- 3 " Syrup or Sugar
- 25 " (1 bottle) Rye
- 20 " Soda water or more if desired.

Follow the same procedure as with the individual drink.

## B. MANHATTAN COCKTAIL

- ½ Ounce Italian Vermouth
- 1½ " Rye

Dash of Angostura Bitters (not essential-but helps)  
Stir Slowly (DO NOT SHAKE)  
Served chilled with a cherry.

Large batch for company.

- 8 ounces Italian Vermouth.
- 25 " Rye

A few dashes of Angostura Bitters

## by A STAFF WRITER

(if available). Follow the same procedure as with the individual drink.

To those who may not wish to serve cocktails but would prefer a wine; two simple rules may help.

1. Sherry BEFORE a meal.
2. Port AFTER a meal.

And for those who may really wish to outdo themselves and, providing, of course, that your butler is not one of those inconsiderate creatures who would have the temerity to ask for the day off on such an auspicious occasion, here is how a sumptuously prepared meal may be served. (Incidentally, should your own butler be indisposed, there is always the possibility of being able to borrow your next door neighbors—with tails complete).

Hors D'oeuvres...	Cocktails, Highballs or Sherry
Fish course.....	Dry White Wine (Chilled)
Soup.....	Sherry or Madeira
White Meat.....	Sauterne, Moselle, Burgundy or Rhine Wine (well chilled)
Entrees.....	Claret, Chianti, or Light Red Burgundy (room temperature)
Roast.....	Chateau Bottled Claret or Red Burgundy (room temperature)
Game.....	Heavy Red Burgundy (room temp.)
Dessert.....	Vintage, Champagne or Chateau Bottled White Bordeaux (iced)
Cheese.....	Port, rich Sherry, Marsala, Muscatel, Madeira or Tokay.
Coffee.....	Fine Champagne, Brandy, Cognac, Armagnac, Eaux de Vie, Liqueurs.

concluded on page 15

**Ben Fleisher**  
CIVIL AND MILITARY TAILOR

115 METCALFE ST.  
OTTAWA 2, ONT.

PHONE 2-6422



# WOODFALLE SCHOOL

Woodfalle School, the newly constructed Dept. of National Defence Dependents' School, opened for the fall term in September.

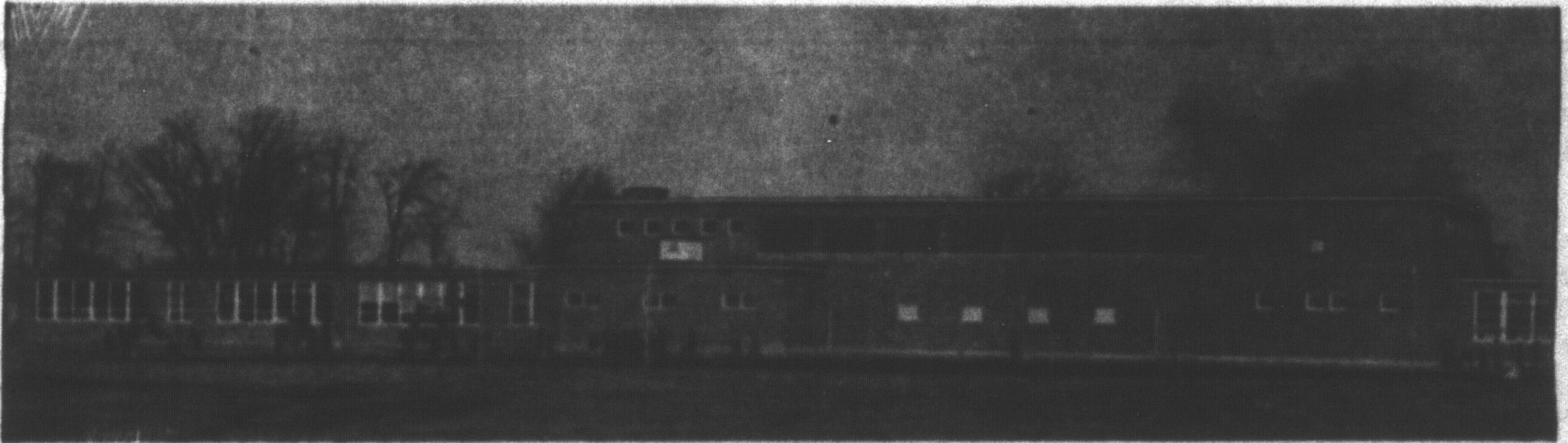
The first impression that a visitor to the school has is in the nature of "Born thirty years too soon", as the new education centre provides the most modern facilities for instruction, comfort and well-being of the station's school-age population. The school is of a standard construction common to DND schools at other military bases throughout Canada. Woodfalle is classed as a stage

rooms in which the subject matter would be of interest and educational value.

The present population of the school is 512; the children attend classes from Kindergarten up to, and including, Grade 8. There are seventeen teachers and a supervising principal on the staff. In another year the number of children in attendance will be over 600. The full complement of school enrollment can go as high as 800, without a serious condition of overcrowding being encountered.

The school is operated in accordance with the rules and regulations prescribed

Since the opening of Woodfalle School in September it has added immeasurably to the facilities provided at Station Rockeliffe, not only in its primary function as an institution of learning, but also as a centre of Community life and activity. At the present time no less than fourteen agencies and groups make use of school facilities in "after-school-hours". Included in these are such organisations as Cubs, Scouts, Brownies, Guides, a Teen Agers Club, the Womens' Auxiliary, a Well-Baby Clinic, and until the completion of the new Chapel build-



4 school, which is a classification with respect to size. In this particular case, an inventory of the facilities provided would include twenty classrooms, two play or recreation rooms, an auditorium capable of seating approximately one thousand, an adequate stage, and full motion picture projection facilities. Of the smaller rooms and space provided there are teachers' rest rooms, library, health clinic, manual training and domestic science rooms, stock room for school supplies, and offices for the Principal and his Assistant.

A full description of each of these items could go on for pages, but it is sufficient to say that every consideration and care has been given to the welfare of the children with respect to efficient teaching and congenial surroundings. Each classroom is equipped with public address speakers, telephone, and a clock controlled from a master unit. Of interest in this respect is the use being made of CBC broadcasts which can be piped into any room or combination of

by the Ontario Provincial School Act. The teaching standards and general functions of the school are under the direct supervision of the School Inspector for the county of Carlton. The school is administered locally by an appointed School Board, the present incumbents being S/L P. J. Grant, chairman, and Mrs. E. S. Dale and F/S. J. Clark as members with F/O. D. G. McDonald as Secretary to the Board.

The choice of the name for the school provides an interesting story. When the building of the school was in its earliest stages, the mayor of the Rockeliffe Station Community was S/L Roy Woods. With S/L Wood's transfer came an election for a new mayor and the choice fell upon Sgt. Frank Falle. In recognition of the fine contribution made to the community as a whole by the two mayors, the then Commanding Officer, G/C Cameron, was charged with the responsibility of selecting a name for the school, and combined the surnames of these two public-spirited men, hence Woodfalle.

ing, various organizations connected with Church activities.

Thus it is with a feeling of pride and enjoyment that the personnel of Station Rockeliffe view their newest building addition. The school has been fortunate in getting away to a fine start, and, although in the first months of its initial year, we look forward to a bigger and better school as it grows in the number of its pupils and in the extent of its influence on the Community of Station Rockeliffe.

**A. A. SMITH**

**Principal**

Born in Toronto shortly after the turn of the Century, Public and High Schooled there, prior to migrating westward to Winnipeg and entering the University of Manitoba in 1921.

---

by F O D. G. Mc DONALD

---

Graduated in '25, '27 and '28 with assorted degrees in Arts and Science, then returned to the University of Toronto on Staff in the Physics Building. Left in 1930 for College of Education to qualify for the teaching profession, followed by 12 years of practice in Continuation Schools and Collegiate Institutes of Ontario.

In 1942, during Easter holidays, inquired if services could be useful to the Royal Canadian Air Force, and was enlisted immediately in the newly organized Education Branch. Toured Western Canada, Alaska, British Isles and the Continent until August, 1946, then joined the Permanent Force and organized #1 T.T.S. at Camp Borden for Academic Training. Served time at Trenton, AMC and CJATC at Rivers Manitoba. Appointed Official Trustee of the new Dependents School at Rivers, liked it so well on completion, joined the Staff as Assistant Principal after retirement from RCAF in January 1952.

Accepted Principalship of new Woodfalle School at Rockcliffe which opened on schedule last september.



**BACK ROW L to R: Mrs. L. Votary, Miss S. Jermynn, Mr. A. Carlson, A.A. Smith, E. Neville, Miss A. Marcellus, Miss B. Gullet.**

**FRONT ROW L to R: Mrs. M. Orr, Miss L. Robb, Mrs. J. Bergin, Mrs. M. Wittenburg, Miss J. Wheeler, Mrs. C. Blais, Miss M. MacRea, Miss I. O'Shea.**

**ABSENT: Miss E. Byce, Miss G. Foley, Mr. L. Grady.**

---



MY! HOW TIMES HAVE CHANGED

# THE ISLAND CONTINENT

by LAC KEN MULLEY

When Ken Mulley brought in this first of a series of articles we asked him for a short pen picture of himself to introduce him to our readers. We asked questions. Ken answered. We took notes. Well - you will see the results for yourself under "Personality Parade" in one of the future issues.

This first article is an introduction to Ken's native country and provides an interesting and detailed list of facts.

Australia is the smallest continent and the largest island in the world. It comprises an area of about 3,000,000 square miles, nearly 40 per cent of which is in the tropics. Its coastline is over 12,000 miles in length. Its areas almost as great as that of the United States and four fifths that of Canada. The land mass of Australia is about 2400 miles from west to east and just under 2000 miles north to south.

Despite the rich coastal plains and the large pastoral lands of the interior, much of its central area is quite unsuitable for agriculture due to the shortage of natural water supplies. The population is centred on the coastal rim and the capital cities of all five mainland states (Queensland, New South Wales, Victoria, South Australia and West Australia) are situated on the sea coast. The population of Australia is rapidly increasing owing to a large influx of people from the U.K. and Europe. In addition the birth rate exceeds the death rate. The low rate of death can be accounted for by the facts that medical standards are high and Australia is a healthy country in which to live. The population passed the 8,000,000 mark in 1950.

The average age of Australians is lower than that of most European countries. The last census revealed that there were 100.4 males to 100 females.

Half of the population is located in the metropolitan area of the capital cities. The population of Sydney is larger than that of Montreal. Melbourne compares with Toronto. There is a parallel rivalry between Sydney and Melbourne as between Montreal and Toronto.

The drift to cities, common throughout the world, is quite evident in Australia. Among the causes of this movement are: the rapid development of secondary industries creating more jobs,

The increasing mechanization of agriculture, the superior luxuries of city life, and the trend towards having small families.

The density of population is only 2.7 per square mile. By comparison Canada has 3.4 per square mile, Belgium has 739.3 and the U. K. has 525.8. It must be borne in mind, though, that one third of Australia is too arid to support life while the rainfall in another one third is too sparse to permit close settlement.

The Aborigines who were the first inhabitants of Australia suffered at first from contact with the whites. (This is unfortunately true in all newly-settled countries.) There are now 72,000 full-blooded aborigines most of whom are nomadic and some of whom live in supervised camps. The aborigine civilization was not advanced as that of the red Indian. They had no knowledge of the wheel or bow and arrow and they used no work animals. Their simple nomadic way of life remains much as it was before the white settlement of Australia. Time and possessions mean nothing to most of them although there are a few whose artistic talents are well developed.

Australia is so large a country that it has almost every type of climate. The tropical north is like the monsoon area of India. Much of the south is similar to the Mediterranean with its warm summer and long hours of sunshine. On the other hand, in the Australian Alps snow sports may be enjoyed during the winter months of June, July and August. The following table shows the temperatures in the principal centres.

The hottest areas is the northwest part of West Australia. In the small township of Marble Bar temperature of 137 degrees Fahrenheit have been recorded.

Rainfall is a vital factor in Australian economic and, almost alone, it has dictated the distribution of the population. The amount of rainfall declines steadily from the coast. Darwin, on the north coast, has 60.6 inches yearly whereas Alice Springs, Australia's most central city, has 10.6 inches yearly. Heaviest rains are on the north coast of Queensland where up to one hundred and sixty inches fall yearly. A daily rainfall of thirty-nine inches has been recorded in this area.

Despite the heavy rain in North Queensland, Australia is a continent of sunshine. No capital city gets less than 6 hours sunshine per day for the whole year. Perth, the sunniest capital, has an average of nearly eight hours, and many parts of the continent get even more.

Surface Transportation is a bad feature in Australia as roads are not good and the rail system is handicapped by the fact that each state has a different gauge of rail. 17 percent of the population travel by air each year and this is the highest in the world, the next country is the U.S.A. with 8 percent of the population flying annually.

Furniture Warehouses  
for Safe Storage

**CAPITAL STORAGE CO.**

Agents

**Allied Van Lines Limited**

Canada's Largest  
Nationwide Movers

ON YOUR NEXT TRANSFER  
SELECT CAPITAL

Crating Packing Shipping

52 Driveway

Ottawa

Tel. 2-4876



Lavergne & Pageau

Made in Canada for export Made to measure suits  
Cash Financing

185 St. MARY'S ST.

EASTVIEW, ONT.

**CLASSIFIED AD RATE**

**5c per word.**

**MINIMUM 10 WORDS**



# SPORTS REVIEW

## BASKETBALL

### Rockcliffe Drops Close One

Nov. 29—... Despite the fact that Rockcliffe played one of their best basketball games to-date, they dropped the decision 50 to 51 to Eddy's Match Co.

In the first half the score see-sawed back and fourth with Eddy's having a slight edge, and the half time score was Eddy's 26, Rockcliffe 18.

Rockcliffe started fast in the second half and scored 12 points without a return by Eddy's, but could not hold the lead which changed hands numerous times. In the last minutes of play with the score tied at 47 to 48, Eddy's scored two field goals to Rockcliffe's one field goal and one free shot and that was the game.

The play was fast and clean throughout the game and Coach "Bill" Winchuk was pleased with the teams showing and also the shooting of F/L Don Doyle and Barry Williams.

### ROCKCLIFFE IN WIN OVER BALDWIN'S

Dec: 10 — In a hard fought game at the station drill hall Rockcliffe defeated Baldwins 40 to 48. The game left much to be desired in the way of good clean basketball, as numerous fouls and talking back to the Referee tended to slow the game down.

Breaking fast in the first half, Rockcliffe took the lead, the half time score being 17 to 20.

The second half started slow and the three-quarter score read 30 to 22 for Rockcliffe. The last quarter was the best part of the game with both teams playing better basketball.

F/O Dixon, playing brilliant defensive ball, continually stole the ball from Darwin's and set up many baskets, for Rockcliffe. Cpl. George McLeod, also playing good defense, stopped shot after shot that were headed for sure baskets for Darwin's.

This makes 2 wins against 3 losses

for the Rockcliffe in league play, but in the words of Coach Bill Winchuk, I quote: "We are just starting to roll so watch our speed in the future".

The high scorers from Rockcliffe were Cpl Hal Rees with 11 points and LAC Doug Williams with 9.

## BADMINTON

### ROCKCLIFFE vs YMCA

Dec 2: — Rockcliffe played the YMCA in one of the first badminton tournaments against an outside team to be held on this station. Rockcliffe lost the tournament 22 games to 28. Despite the loss, the Rockcliffe team showed tremendous possibilities and should be a dangerous contender for honors in Ottawa in the future.

One of the highlights of the night's play was the playing of the doubles team of F/O Danard and AW Kitty Smith. Playing flawless badminton and continually keeping their opponents off balance they swept through their matches 15-0 15-1 15-6

F/L Doug Biden, altho not satisfied with his own effort, stated that the playing of the women was wonderful and would be a tremendous asset to the team.

F/L Bernie Kuhn, chairman of the badminton committee, was pleased with the whole tournament and intends to have more of them in the future.

## BOXING

### BOXING BENEFIT AT ROCKCLIFFE

Dec. 3: — The drill hall was the scene of a benefit boxing show put on by the Rockcliffe and Twin City boxing Clubs. There were ten bouts on the card and every one was very good with lots of every kind of action.

LAC Pinky Mitchell, fighting in the main event won an unanimous decision from Roger Thibeault from Hull.

Pinky, starting fast and throwing his famous left hook caught Roger numerous times in the first round. Roger retaliated with both lefts and rights and made a few of them felt.

The third and fourth rounds were the two best of the fight, both fighters standing toe to toe and throwing punches all angles trying to finish the fight but neither could get in the punch that would do it. Pinky had a slight edge in these two rounds.

The fifth and final round was a repetition of the third and fourth with both fighters trying for the knock-out punch and neither succeeding. Both fighters finished strong with Roger showing little effect of the blows he took.

The Semi-final between LAC Ronnie Lacelle and LAC Bob Belanger was one of the real crowd pleasers of the night. Both fighters, showing good form and training, kept the crowd on their feet through-out the whole bout with their long-range and in-fighting. Ronnie, the more experienced boxer, won the fight on a split-decision.

Gale "Flash" Kerwin won a unanimous decision over his rival of many fights, LAC Woody Reid.

Gale showing superior condition and training kept Woody off balance and mostly on the defensive through-out the fight.

LAC George Maxwell, showing effort and courage if not skill, dropped a unanimous decision to Harry Wilson from Denmark. This was Maxwell's first ring fight.

This whole show was put on voluntarily by all concerned, with the receipts all going to the Children's Xmas parties being held here on the station.

Dec. 7 — LAC Bob Belanger defeated Roger Thibeault in a five round final bout in the Hull Armouries.

On the same card LAC Woody Reid defeated Arnold Lacelle in a five rounder.

Dec: 8 — LAC Pinky Mitchell defeated Gordon Baldwin in a Benefit for the Santa Claus fund for Crippled Children in Toronto. On the same card Ronnie Lacelle went down to defeat to Hugh Lindsay.

# HEALTH AND THE FAMILY

by NURSING SISTER  
McINTOSH

*This is the first of a series of articles by Nursing Sister McIntosh on general health and medical care. It is hoped that it will prove of interest and help not only to dependents living on and off the station but to single people too.*

Public health and medical care are of great economic as well as social importance.

Health is a state of complete mental, physical, and social well-being, and not merely absence of disease or infirmity. All workers who are concerned in any way with the family, such as the clergy, social workers, and public health personnel, co-operate and work together to promote a good, healthy family life.

In future editions of this paper I shall attempt to pass on to you information concerning child health and immunization, Mental Hygiene, Nutrition, and Sanitation.

To begin the series let us discuss  
The Sharing Of The Home  
Environment With Children

Children with few exceptions have had to live and play in a home environment planned for adults. The furnishings found in the average home, because they were built for grown-ups, are quite out of proportion to the child's size, and often unsuited to the activities which interest and develop him.

Children, however, accommodate themselves by the use of their fertile imagination; a chair becomes a fence, a stool a table, boxes are houses, and the broom is a horse.

Ada Arlitt, who wrote "The Child From One To Six", says, "Of the many problems which confront parents of the child in the pre-school period, one of the most important is the understanding of those factors which underly learning. The child is at the state when much repetition is necessary if anything is to be learned. To the average adult, doing the same things day after day becomes a wearying task. To the child this is not only natural but interesting.

Satisfying activities on his own age level keep him so busy that he will not need to rely on the attention of adults for his entertainment. This does not mean that he will not need the interest of adults in his activities. He will, interest, however, can be conveyed in a smile or a word of encouragement, and in the attitude of adults toward any of the child's daily activities within the family group.

An only child may be in need of companionship in his own level. Dr. Louis Schwartz says, "If a child is in contact with adults too much he loses the advantages of development found in the play life of his own age group. Play to a child is social adaptation, a give and take relationship with others. Play develops muscles and senses in the ages two to three; later from three to six it lays the foundation for imagination; from six to twelve play gives the basis for self confidence and teaches the child loyalty and teamwork. Constructive play fulfills the child's innate desire for achievement, and gives him the ability to work with his mind and hands.

In group play, the child unconsciously shares common interest" It is easy to see why children deprived of this at home or in the neighbourhood form into street gangs to satisfy this urge for companionship, interest and, competition.

Someone has said, "If ever you yearn to be wise, study children." How true, and how far reaching this way of thought could be in the light of available knowledge concerning children's needs. How much greater the contribution we might make to the emotional and social development of children and through them, to family community life, country and the world as a whole had we deeper understanding of the use of this urge to respond to life, which we call play.

## THE CLIMATE OF OTTAWA

By George L. Pincock

*The first of a series of articles by the Senior Met. Officer at Rockcliffe.*

Whenever people from different parts of Canada gather together, there is often an argument concerning weather conditions in the various cities. Extravagant claims are made, often with no basis in actual fact. Canada has many different climates. Each one can be described in terms of the average and extreme temperatures, the total rainfall, the total snowfall and other measurable quantities. When this is done, it is an easy matter to compare the climate of different places.

We all know that Winnipeg is colder

than Ottawa during the winter. But, how much colder is it? Well the average minimum temperature in January at Ottawa is 3 degrees above zero. For Winnipeg, the figure is 13 degrees below zero. The lowest temperature ever reported at Ottawa is 38 degrees below zero. For Winnipeg, the figure is 54 below. Thus can a climatic fact that is generally known be proven by the weather records.

There are plenty of other figures to describe the climate of Ottawa. The warmest month is of course July when the average maximum temperature reaches 81 degrees. The highest temperature ever recorded is 100. The average annual precipitation is 34.23 inches when both rain and the water equivalent of snow are combined. Montreal is a little wetter with a figure of 40 inches, North Bay a little drier with 31 inches. Halifax receives 56 inches and Vancouver 57 inches. You will notice that both coasts have wetter climates than the inland Provinces. For Regina, the annual precipitation average only 15 inches but two thirds of this falls from May to September so that it is possible in most years to grow a successful crop of wheat.

The average annual snowfall at Ottawa is 82 inches, and there are usually 49 days in the year with snow. Rain falls on 98 days in the year. The last frost in spring normally occurs about May 7th, the first frost in autumn about October 2nd. All these figures are required before the Ottawa climate can be described.

What about variations within Eastern Ontario? Is there much difference?

In general we find that there is an increase in precipitation as we proceed down the Ottawa Valley. There is a decrease as we proceed northward from the St. Lawrence River. However, the differences in precipitation are small and there are exceptions to the general pattern.

Quite a large contrast is to be found, however, in winter temperatures, which decrease as we go up the Ottawa Valley or northward from the St. Lawrence. The average low temperature on a January day at Kingston is 11 and at Brockville 10. For Ottawa, the corresponding figure is 3, for Pembroke and Renfrew 2. For Maniwaki, 75 miles up the Gatineau, we find a value of 3 degrees below zero.

Concluded on page 16

# AROUND THE UNITS

## SUPPLY SECTION NEWS

by Warrant Officer Arbuckle

The days of frozen ears are now a thing of the past. Yes, AFRO 798/52 has come to the rescue and introduced a new Cap Winter for all ranks. We are told that the visible material is blue nine ounce serge cloth, and that the pattern of these caps has been based on the protective winter caps, ski type pattern, which has been on issue, except that the front position of the crown has been stiffened to carry the badge and gives a much neater appearance. This cap will replace the cap, ski type "B", in scale of issue for protective clothing. Further good news is that the officers and WO's 1 may purchase one on repayment.

So far so good, but please do not rush over the clothing stores and say, "It is cold and I want one of the new caps right away". That is not the practice followed by the RCAF when introducing a new clothing articles. Paragraph 8 of the AFRO reads that the units are to demand their requirements through the normal channels. Well, you know the rest.

Our old friend "Joe le Beau" Pichard bids farewell to Rockcliffe early in the New Year. Best of luck, Joe, and hope you like your new unit.

Our airwomen during 1952 are certainly thinning out our handsome airman bachelors. Girls, please give us a break during 1953 or we will have no living-in members to elect to the mess committee.

## AFHQ PRACTICE FLIGHT PARTY

By Murray Leedham

Last Tuesday, 9 December, if any of our readers were in the vicinity of the drill hall they probably heard an awful lot of noise. It was the Practice Flight party. We united with Maintenance Workshops and Safety Equipment, to have what many observed was the best party of the year. It was said that if the odd person did not indulge he was intoxicated by the music, so what more could you ask for.

It must be cold outside. We just had our first weekend visitor in the form of the C5, and, believe it or not, they vacated our draughty hangar per schedule.

## WORD FROM THE WEATHER OFFICE

Before we pass on our tale of woe to you, brave reader, let us pause a moment and introduce ourselves, the infamous men (and women) of the Rockcliffe Weather Office, Messrs. Pinock, McQueen, Dingle, and Galbraith, FS Holland, CPL's, Parker and Gold, LAC's Smith, Nordstrand, Goldthorpe, Slusarchuk, Duhamel, and AW's Gren, Croteau, Smith and Burgess.

It has often been said that weather men are without friends. This may be so, but, umpires have no friends! Nor do tax collectors or Sergeants. So you can see we're not alone. Our time in the Meteorological Mill is spent grinding out weather reports and dodging a host of potential murderers and hired assassins who lay in wait, hoping to gain some measure of revenge for the soaking they received on the previous day.

Space is short and so we say Goodbye, as we pack away our crystal Ball and slip out of our swami Costumes, secure in the knowledge that at least for today we have joined the ranks of those brave souls who, through adversity, have completed their tasks without the cheers of their fellow men.

## FLYING CONTROL NEWS

by AW1 Hamm

Since we are to have some news in the Rockcliffe "Record" every week, it would be a good idea to introduce the personnel in our little section.

First of all, F/O WH (Bill) Twitchell is our SFCO. Duty controllers are: F/O ECPL (Phil) Catelier, F/O JP (Reggie) Regimbal, F/O ST (Sid) Clements F/O JL (Linds) Dowsett and F/O DL (Dell) Temple.

Then there are the A.C. Ops Sgt JL (John) Longhurst, Cpl HL (Shorty) Cruickshanks, LAC's PJ (Jack) O'Keefe, GAS (Gas) Beauchesne, Ambrose (Andy, you can see why) O'Connor, RP (Roy) Pirrie, and AW GA (Gerry) Hamm.

Gas is leaving us January 1st 1953, to attend a sixteen week GCA course at Keesler Air Force Base, Miss., and Shorty is going to Germany in February. Some people have all the luck.

Sgt Longhurst and Jack O'Keefe are now on the GCA course at Keesler Air Force Base, having departed from our fair section way back in September and October. Sgt Longhurst, however, will be home for Christmas.

## TELE-TECH TOPIX

The holiday spirit is bringing out the music among the members of this unit. Amid the individual crooning of certain AW's, the tootling of flutes, the struggles of a choral group and AC Al "Gene" Kelly's tap dancing, work suffers but hearts are gay.

Stu Baker who went to Trenton early in December has returned in time for the Christmas festivities. We also welcome the Shoran Calibration personnel back from Winnipeg, who are now either back at work at Rockcliffe or enjoying a well-deserved rest.

A result of the Winnipeg sojourn was the marriage of LAC Ron Deault to Miss Muriel Steward on October 30th. Johnny Labrecque acted as best man and a fine time was had by all.

Greeting to LAC Rudge Scharfe, AC Jim Neals, AC Ben Theriault, and AC Lee Snowden.

Farewell to Cpl Johnny Sweetland (Comet course in the U. K.), Cpl Mo Dickinson (St. Hubert), Cpl Pete Stasiuk (North Luffenham, U. K.), Cpl Joe Stewart (12 AC & WS Mount Aupica, P. Q. Incidentally Joe will marry Miss Marge Lafortune in Ottawa December 20th. Best of luck to you both.

On course in Toronto but expected back for summer Operations are LAC's Bob Stalker, Bob Sinclair, Tex Dzuba and Clyde Spears.

BONNE SANTE continued from page 7  
When finally you have managed to survive the rigours of the holiday season (with or without the butler) and you discover that the slips and shirts which Santa Claus left behind are not quite your size because of certain bulges in the seams, just take a glimpse at the following chart. It may help you.

## BEVERAGES CALORIES.

Dry Cocktails 125 to 150. Sweet Cocktails 150 to 225.

## STRAIGHT DRINKS.

Scotch	110 to 130
Rye	120 to 145
Bourbon	120 to 145
Gin	110 to 125
Rum	110 to 225
Brandy	105 to 115
Southern comfort	150
Cordials	70 to 180
Beer, Ale or Stout	100 to 150
(By the glass)	
BOTTOMS UP	

# SCOUTS - CUBS - GUIDES - BROWNIES

## BOY SCOUT NEWS

by Jim Worrall

Since everyone else is doing it, we might just as well get on the bandwagon by wishing the staff of the new "Rockcliffe Record" all the best, and we of the 54th Boy Scout Group (Ottawa District) look forward to a happy association with our new-found editorial staff. And now, on to the business of Wolf Cubs and Boy Scouting at Rockcliffe.

This paper will undoubtedly reach a few new readers and probably will encourage a closer examination of the news items contained herein, so, for the information of all, the names of people responsible for the operation of the Group listed below.

### 54th GROUP COMMITTEE

Chairman - S/L WA Bothwell  
Vice - S/L TA Calow  
Secretary - FS OR Beattie  
Treasurer - CPL SE Hunter

### MEMBERS

S/L W Rodger (Chaplain Prot)  
F/L WC Hewitt (Chaplain Prot)  
F/L Halley (Chaplain RC)  
F/L JA Frederickson (Chaplain RC)

### SCOUT MOTHERS CLUB

President - Mrs. BC Green  
Vice - Mrs. E. Charters  
Secretary - Mrs. SG Spear  
Treasurer - Mrs. WA Bothwell  
Sewing Convenor - Mrs. JM Birch

### BOY SCOUT TROOP

Scoutmaster - LAC RD Anderson

### WOLF CUB PACKS

Group Akela - CPL WJ Charman

### GREEN (A) PACKS

Cubmaster - LAC RE Ingraham  
Assistant CM - SGT AB Fisher  
Assistant CM S/L PJ Presidente  
Assistant CM Mrs. RE Ingraham

### RED (B) PACK:

Cubmaster - CPL JWG Worrall  
Assistant CM - Mrs WJ Charman  
Assistant CM Mrs GF Sanderson

### TAWNY (C) PACK

Cubmaster - FS RA Read  
Assistant CM - LAC PJ Orth  
Assistant CM - Mrs PJ Orth

### SPECIAL INSTRUCTORS

SGT RJ Dupuis  
CPL P Primeau

This year, our Group was re-organized insofar as the Cub Packs were concerned. With the enrollment of almost 45 "New Chums", it was decided that three Packs would be required in order to cope with

the monstrous problem of proper training and instruction called for in the program as laid down by Dominion and Provincial Headquarters of the Boy Scouts Association.

Since September, Akelas Read, Charman and Worrall have assisted on the Ottawa District Preliminary Training Course Staff, which was charged with the responsibility of training new Cub Leaders and a few Cub Instructors. Several of our own Leaders took advantage of the course, and after completing their written examinations, will in due course receive their Certificates. The Leaders concerned are: Cub Master Ed Ingraham, and Assistant Cub Masters Ab Fisher, Lenore Sanderson, Paul and Dot Orth.

## BROWNIE NEWS

by Mrs M. R. Barrett

Twhit Twhoo, Twhit Twhoo.

The Brownies of the 53rd Paek Station Rockcliffe held their Christmas party on December 12th in the Teachers' room at Woodfalle School. We would like to thank the mothers and everyone who helped us to make our party such a success.

The food was delicious especially the turkey sandwiches. I'm mentioning these because, during the meal, I could hear voices up and down the table say, "pass the turkey". At the end of the meal when everyone was just about bursting and trying hard to eat the last spoonful of ice cream, I noticed one little Tweenie who had her eye on a large chunk of cake with pale green icing—yes, she finally finished it! I wonder if this Tweenie escaped a tummy ache that night?

Games were played and prizes given to the winners.

To top the evening, Santa Claus arrived. We were all very pleased to see him, and more pleased to receive the apples, oranges and candies he gave everyone.

The Brownies and Leaders of the 53rd pack would like to wish everyone a very Merry Christmas and A Happy New Year.



## GIRL GUIDING

by EL Neilson

Last Wednesday night we were very pleased to have Mrs Gibb the Brown Owl over to our meeting and enrol our Guides. The girls enrolled were Sharon Birchall, Diane Dalglish, Sharon Doucet, Lorrain Goodrich, Margaret McNamara, Joan Paradis, Carol Pawson and Brenda and Veverly Stevens. Mrs Gibb was happy to enrol the Guides as she had enrolled some of them as Brownies. We are happy to welcome these new Guides into the 54th Company.

This company, having just been organized this year, now has approximately forty girls, four patrols with ten girls in each patrol. Each patrol is competing against the other to see which will have the honor of hanging the pennant up in their corner. The patrol which obtains the most points during the night wins the pennant for the next week. The marks consist of points from attendance, appearance and games.

This week the Guides are having their Christmas party and then a little holiday until after the New Year.

So until next week, on behalf of the Guides we wish you a very Merry Christmas and a Happy New Year.

## CARE OF FLOORS

continued from page 4

### MARRIED QUARTERS FLOORS:

It is the responsibility of occupants to provide all necessary cleaning and preservative materials for the various type flooring existing in married quarters. The treatment should correspond with the above but *under no circumstances are paste waxes to be used on asphalt tile as this causes particularly rapid deterioration.*

## THANK YOU

The response to our appeal for contributions has been overwhelming.

So much material has been forthcoming that we have had to hold some of it until our January issue.

However, we have tried to include in this issue everything of a seasonal nature, and those articles which have been held over will lose none of their interest through the delay.

To all writers whose material does not appear this week, and those whose articles have been cut, we apologise.

To all who have contributed we say "thanks a lot". Such interest augurs well for the future.

# "THROUGH THE KITCHEN WINDOW"

SCHOOL NEWS  
by A. A. Smith

## AREA 7 REPORTING

by Isla McGregor

After an extensive check of the area in search of a few human interest items, the following turned up:

Sergeant Robert Goss, only recently released from hospital after spending the better part of six months in a cast, and now forty pounds lighter, was one of the lucky persons at the Bingo on Friday night—having won a pair of pyjamas and a leather shaving kit. He is going to work on Monday morning (15 Dec.) for the first time since April.

Mr R Dupuis also held a winning card—how many times is this, Betty? WO2 Les Waite came up with an 816 cross in the "WONCO" Bowling League on Friday night last—this should help his team the "Guzzlers" quite a bit.

It may not be news when I bowl a beautiful 89—but when Marj Sheppard does, I think it is one for the book.

Area 7 Community Council is on top in their bowling league—they play off shortly. Here's wishing you luck, boys.

This coming Monday night finds the Area 7 Men's Bowling Team in the Area League pitted against the other top three teams on a round robin series to declare a winner prior to the Christmas holidays.

Area 7 won some distinction in the inter-area Softball League, particularly in a couple of games against the single airmen, so here's hoping they can come through again on the bowling alley!

## NEWS FROM AREA 5

by Mrs Sisk

With the Christmas rush at hand, little time seems to be left to gather the local quips. However one item of particular interest came up recently in the "census-taking" for the Christmas party. The ladies who carried out this task came up with the staggering total of 328 children for this area, a sizeable representation to the Station Party.

Moving vans have been steady visitors to our area in recent weeks. Among those leaving were Sgt and Mrs W. Southcombe. Welcome is extended to WO and Mrs Fanjoy, Sgt and Mrs Beattie, Sgt and Mrs Angel and all other newcomers to our community.

Sgt and Mrs M. Young and family have gone to Toronto to spend the holiday season with relatives.

## AREA 8

So far, the newspaper staff has been unable to line up a reporter for area 8, but we're anxious to have one. If anyone knows of a good candidate or can volunteer, phone the "Record" at local 324.

There were two births in Area 8 in December that we know of, and they were both on the same day, December 4th. Boys were born to Cpl and Mrs Bruce Draycott and to LAC and Mrs Frank Spour.

## WOMENS AUXILIARY

by Jan Simons

Our membership had a boost on Monday, Dec. 15th with the addition of 9 new members. January will bring many more out, we hope.

Mrs. R. Sisk lined up her committees for the Christmas parties. Anyone else wishing to help is asked to call Mrs. Simons at SH 6-4574. Workers are requested to be at their posts by 1.30 on Saturday.

Mrs. E. S. Dale reported that the School Inspectors think our school is very well set up, and a good spirit prevails throughout.

Mr. Smith has a list of books needed in the Library and any person wishing to donate a book is welcome to call Mr. Smith at the school.

There was an election to fill the vacancies created by transfers, also a 2nd Vice President, in the event of illness. Mrs. W. Loynes was elected by acclamation as Vice President, Mrs. R. W. Bush as 2nd Vice President, and Mrs. R.C. Pambrun was acclaimed as Entertainment Convenor.

If you have a neighbour who is ill, please contact Mrs. E. S. Dale at SH 6-6249. She can only send to those she hears about, so let her know.

There was so much business to be settled that it was voted to draw for the card prizes instead of playing cards for them. A lovely lunch was served by Mrs. R. C. Jones and her committee and everyone wandered homeward quite late.

## HOW ABOUT SOME NEWS FROM THE OTHER AREAS?

## Holidays

The school will close for the Christmas holidays on Friday afternoon December 19th and re-open Monday the 5th of January. All preparations are completed for the parties which each room will have on Friday and then for the big parties on Saturday afternoon in the Auditorium, the Drill Hall and Station Theatre.

## Lost and Found

A number of parents must wonder what happens to mitts, gloves, shoes, scarves, caps, watches, rubbers, overshoes etc. which children bring to school but don't bring home again. Well our "Lost and Found" box in the Office is fairly bursting at the seams with unclaimed articles, perhaps some of them belong to your child and are waiting only to be collected.

## Visitors

A/C Ripley, the AOC, and his party visited the school on Wednesday afternoon and thrilled pupils in Grades 7 and 8 by examining some of their work in Shellercraft and Model and Map projects. Children always like to have visitors who display interest in their work.

For a whole week we had the School Inspectors, Mr. Simpson and Miss Johnston, visiting our school and spending quite some time in each class-room. Both pupils and teachers are benefited when the Inspectors come, since they are very much interested in the progress of the pupils and make many suggestions to improve the quality and the methods of instruction. They both had some very complimentary things to say about the Staff and the equipment which resulted in a very active and industrious group of pupils who were happy in their work and had a very fine school spirit developed in such a short time.

## THE YOUNGER SET

No. 12 Cottage Row was the scene of a gala gathering on Friday evening, December 4th, when Brenda Orchard entertained her young friends on the occasion of her twelfth birthday.

Following a theatre party, the guests adjourned to the Orchard home for refreshments, games, and dancing. Brenda was the recipient of many lovely gifts and birthday wishes. According to those present, a wonderful time was had by all.

# OUR CHAPELS

**CHRISTMAS SERVICES (Protestant)**  
Sunday December 21st — 1100 hrs  
(in old Chapel)

1100 hrs  
(Sunday School - Woodfalle School)  
**MIDNIGHT SERVICE-Christmas Eve**

Midnight Carol Service will be held in the **NEW CHAPEL** on 24th December at 2330 hours. Holy Communion will be celebrated at this Service.

## "O Little Town Of Bethlehem"

Once again the Christmas Season is with us, and we are discovering once again that no other Festival so deeply moves the human race as the annual call to the cradle of Christ. The Christmas spirit seems to gather even more strength as the centuries roll on. Shepherds heard the angels song, and the world has been singing ever since. The Wise Men brought their gifts, and inspired in men the grace of giving. Every Christmas Tree around which parents have placed gifts of love for their children, every effort of welfare societies to cheer and bless the needy, the presentation of 19 baskets of gifts by the Sunday School Children of our Station to the Salvation Army, may be traced back to Bethlehem. Thus Bethlehem casts its magic spell over all our lives and generates the spirit which the world needs so much.

Even the most confirmed cynic has to admit that Bethlehem is written deeply on the world's heart. Every cheque he writes, every letter, every document, every bill of money, all bear the year of Our Lord. Millions of Christmas Cards will directly or indirectly proclaim his birth.

Every occasion on which we say "Merry Christmas", we salute Christ, the King.

May the Holy Child of Bethlehem descend to us, be born in us, and bless us all this Christmas.

## STATION CHAPEL (RC)

**MASSES** on Sunday, Dec. 21 . . . . .  
8-9-10 a.m. (in old chapel)

**CONFESSIONS** every Saturday evening from 7.00 p.m. until 8.30 p.m.

We are looking forward towards having our Midnight Mass on Christmas Eve in the newly completed chapel. Even though it will take some time before all the furniture, sanctuary and other chapel equipment are properly installed, nevertheless we feel certain that everyone

will be delighted with the beautiful new chapel which has been placed at our disposal.

For the past two months the combined men and women's choir have been practicing the music for a special Christmas Mass, and have added fifteen school children to their number for the traditional Carols. The altar-boys have all been rehearsed, and Fr. Halle has designed and constructed a new and artistic Crib complete with shepherds, angels and the Wise Men from the East.

With all these preparations we are looking forward to a large turnout of officers, airmen, airwomen and their families. There are no reserved seats, and the doors of the chapel will be opened at 2330 hrs (11.30 p.m.)

May we take this opportunity of thanking all those who helped in any way in making the chapel ready for this year's Midnight Mass; and to one and all we wish a very Happy Christmas.

## CLIMATE OF OTTAWA

*Cont'd from page vi*

With an average difference of 14 degrees on each day in January between Kingston and Maniwaki, we must expect to find a considerable difference in the plant growth in the two regions. A shrub or tree that will stand the winter at Kingston might be killed by the colder winter temperatures at Maniwaki. There will also be differences in the fuel bills at these two places.

The climate of a place is made up of all the different kinds of weather that occur there both in winter and summer. It includes the blizzard and also thunderstorm. It includes the mists that rise from a river on a cold autumn morning and the first warm days of spring that bring the trees into leaf. Dry figures can never portray the beauties of nature of which the weather is a part.

Yet climate is more important in our lives than we think. It determines the crops that can be grown, the structure of houses and buildings, the activities of the people, the number of snow ploughs that the city must purchase and so on. There is scarcely anything even bought in a store which does not have some connection with either the weather or the climate.

## TO ALL CONTRIBUTORS

Deadline for copy is 1500 hrs. each Tuesday.

Copy received later than this will be held for the next issue.

News items must meet the above deadline if they are to be of value.

We ask for your cooperation in this matter.

*The Editor.*

## NEWSLETTER TO BE PUBLISHED

As previously announced, the Rockcliffe Record will skip two issues between the 19th December 1952 and 9th January 1953. To keep everyone up to date on entertainment during the holiday season, however, we will publish a newsletter on Monday, 29th December, 1952. This will be distributed in the same manner as was the Rockcliffe News.

## CLASSIFIED

### CHRISTMAS SHOP

**HOURS:** 1200 to 1700; 1800 to 2200 daily.

The Christmas Shop will be closed on Christmas Day, Boxing Day and New Year's Day. The shop will be continued after the holidays in its present location at the Airmen's Dry Canteen, and will be open to service personnel for purchases.

**HELP WANTED:** The AMC Canteen located in Building 111, Rockcliffe, requires the part-time employment of preferably the wife of an airman living in PMQ's. The time involved would be 9.00 AM to 11.00AM Monday to Friday and 9.00 AM to 11.00 AM on Saturday. Experience preferred. Salary 65c per hour. Apply AMC Canteen Officer, Box 530, RCAF Station, Rockcliffe, giving particulars so that interview can be arranged.

### Repairs

Watches, Rossons, Pearls restrung. Reasonable Rates. Call Local 366 Cpl Clark.

### For Sales

Girls white fancy skates, Size 3, in good condition. House 11, Area 7. Phone SH 6-4102

### Hair Stylings

By Emil Arndt, Swiss Hair Stylist, Rockcliffe Beauty Salon: 9 - 12 AM and 1 - 6 PM Daily. Tuesday and Thursday Evenings.