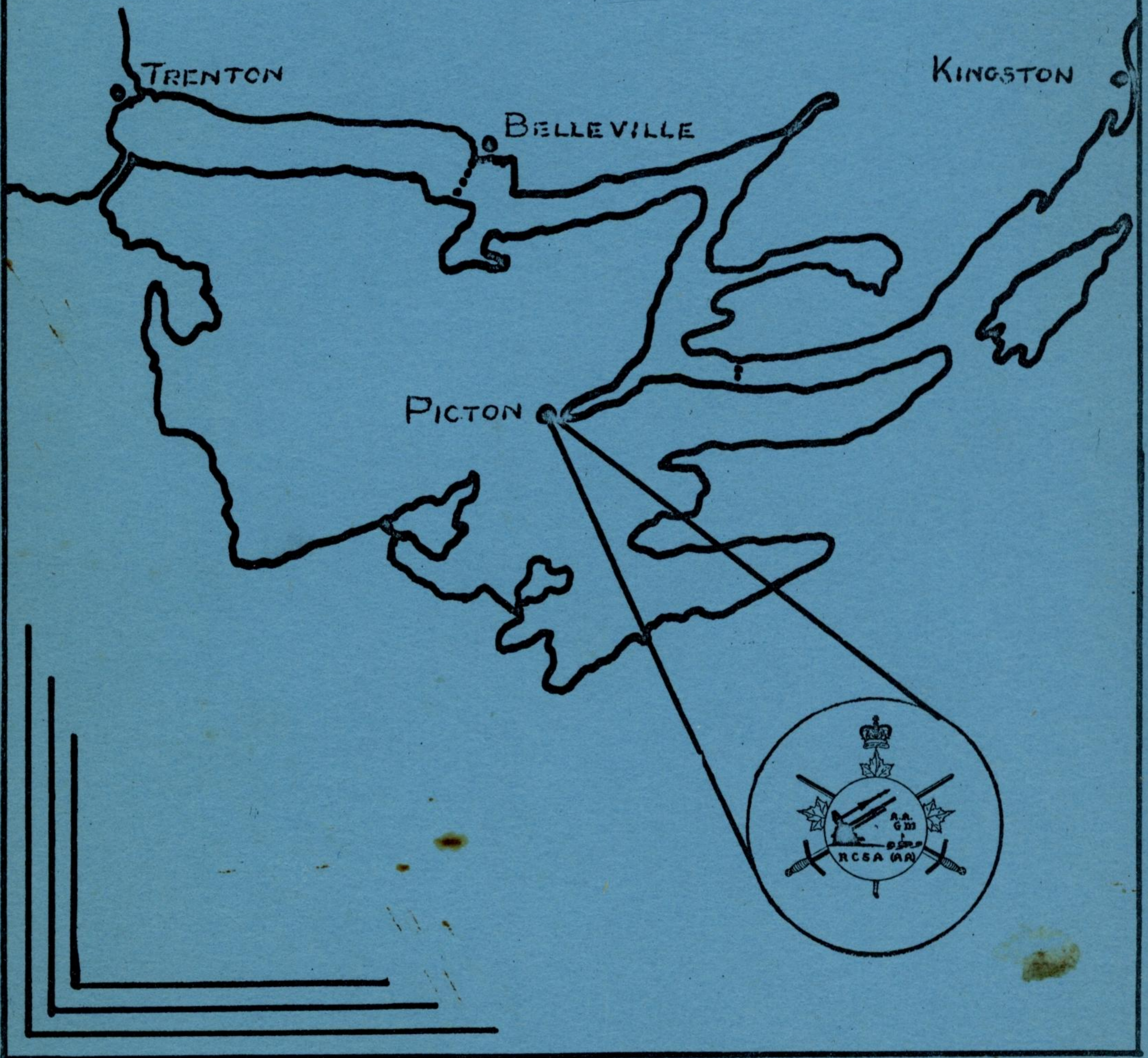


PICTON CAMP INFORMATION BOOKLET



AIR PHOTOS

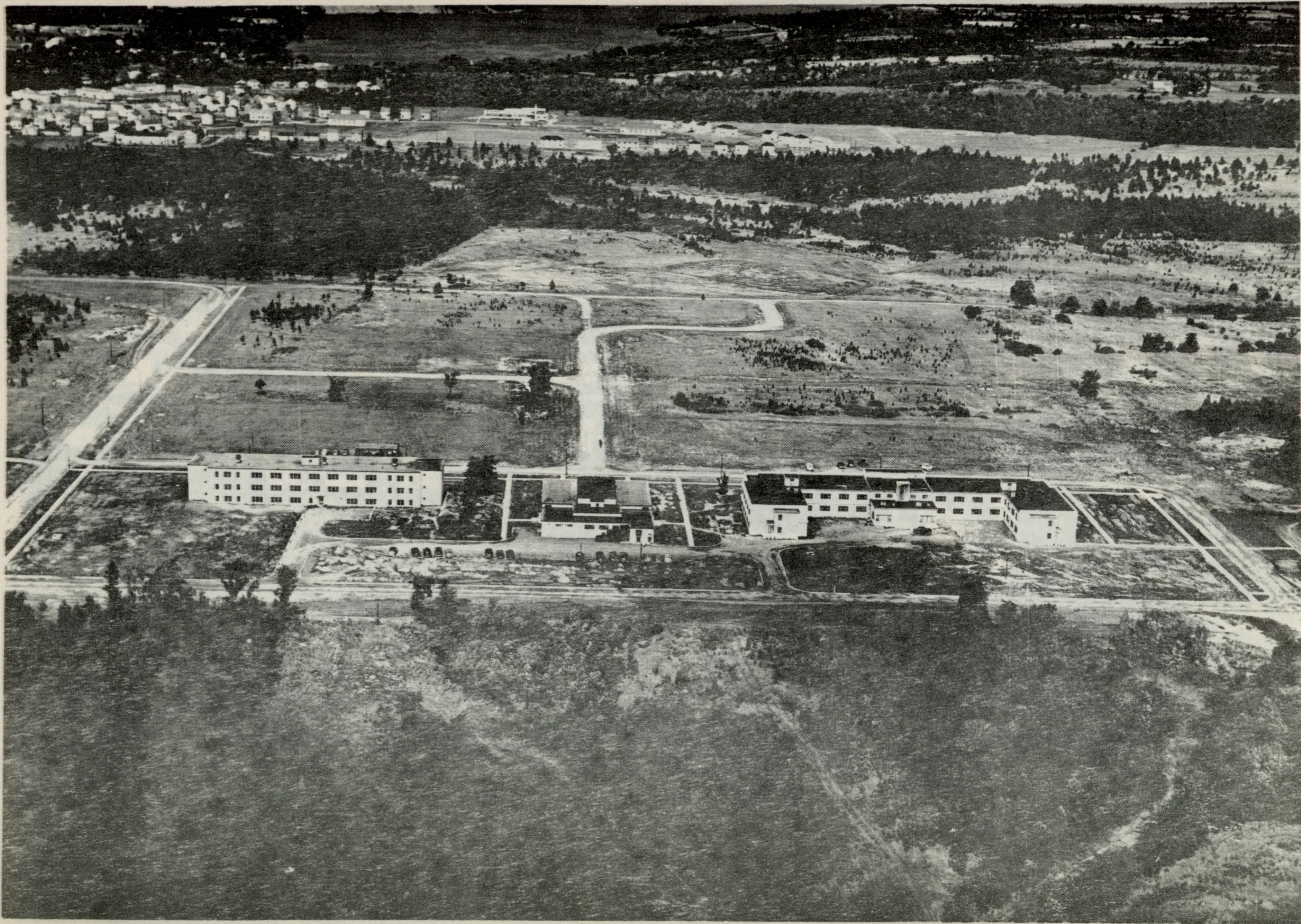
The three aerial photos which follow are excellent views of the entire camp, showing the layout and extent of Picton Camp.

The first photo shows the main camp with the hangars and airport in the background.

The second photo shows the new quarters provided for the troops of Picton Camp. From left to right are the 180 man Barrack Block, 500 man Mess Hall, 250 man Barrack Block and central heating plant just off to the right of the picture. In the rear may be seen a view of the PMQs and Picton Bay.

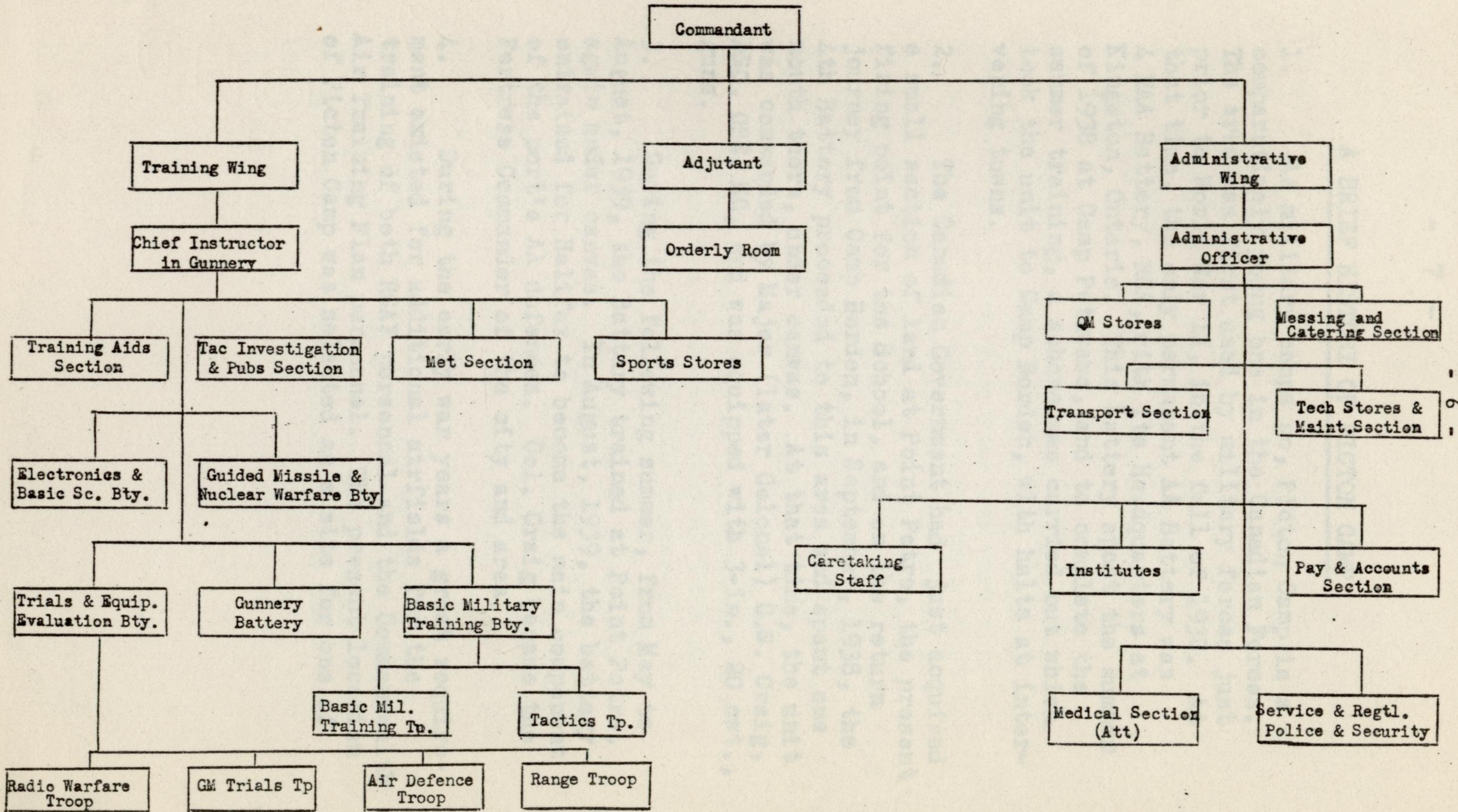
The third photo presents a fine view of a portion of the PMQ area with its 250 housing units, chapels, school and groceteria.







RCSA (AA) ORGANIZATION CHART



A BRIEF HISTORY OF PICTON CAMP

1. As military camps go, Picton Camp is a comparatively young one in the Canadian Forces. The area was first used by military forces just prior to World War II, in the fall of 1938. At that time, the only permanent AA Battery was 4 HAA Battery, RCA, with its Headquarters at Kingston, Ontario. This battery spent the summer of 1938 at Camp Petawawa, and to complete the summer training, a scheme was carried out which took the unit to Camp Borden, with halts at intervening towns.
2. The Canadian Government had just acquired a small section of land at Point Petre, the present firing point for the School, and on the return journey from Camp Borden, in September, 1938, the 4th Battery proceeded to this area and spent one month there, under canvas. At that time, the unit was commanded by Major (later Colonel) C.S. Craig, DSO, OBE, MC, and was equipped with 3-in., 20 cwt., guns.
3. During the following summer, from May to August, 1939, the Battery trained at Point Petre, again under canvas. In August, 1939, the battery entrained for Halifax to become the main component of the port's AA defences. Col. Craig became the Fortress Commander of the city and area.
4. During the early war years a great requirement existed for additional airfields for the training of both RCAF personnel and the Commonwealth Air Training Plan personnel. The present location of Picton Camp was selected as a site for one of

these new air stations. Buildings and runways were constructed in 1940 and the same year the first trainees arrived. This first group consisted of both Canadians and Americans who were already trained as pilots, either commercial airline or bush pilots, and who were to be instructed in Service procedures and on Service aircraft.

5. Toward the end of 1941, a large draft of RAF personnel arrived for training under the Commonwealth Air Training Plan and were sent to Picton, as well as other stations throughout Canada. The RAF took over Picton Station completely in early 1942 and the station became No.31 Bombing and Gunnery School. The RAF remained in control until 1944 and, during this period, the present AA firing range at Point Petre was used as a practice bombing range.

6. It is interesting to note that all the buildings originally constructed in 1940 and 1941, and used by RAF and RCAF personnel, are still used at Picton Camp, with few, if any, changes. The RCSA (AA) Officers' Mess owes a vote of thanks to the RAF Officers for the large stone fireplace in their anteroom and for their "Ladies Room", which is constructed on the lines of an old English pub, as these were built by the RAF out of Mess profits.

7. When the camp reverted to RCAF control in 1944, there was no call for its facilities except as a storage place for aircraft and only a skeleton maintenance detachment was quartered here.

8. In 1944, 1945 and 1946, the Point Petre AA Range was used by Reserve Force Units, firing 3.7-in HAA guns with Sperry predictors for the first time.
9. In July, 1944, the first radar-controlled HAA Shoot took place when Radars AA No 3 Mk 1 (PF) and AA No 4 Mk 1 (ZPI) were brought from A-36 Radar Training Centre's operational Training Wing at Barriefield. Using NRMA radar detachments, and a radar drogue made of nylon and window-screen, the guns were successful in obtaining a hit on the sleeve on the second run.
10. In 1946, during the change from a war to peace time basis in the Canadian Army, it was decided to close the Coast and Anti-Aircraft Artillery Training Centre (A-23) at Eastern Passage, near Dartmouth, N.S. The AA portion of the School was moved to Picton. The advance party under Lt Col R.J. Fisher, MBE, ED, arrived in August and took over the buildings which comprise our present School. The main body arrived in October of that year and the Royal Canadian School of Artillery (Anti-aircraft) settled into its present home at Picton.
11. In 1947, RCEME set up a full fledged workshop to provide more efficient and speedy service to the School. 210 Workshop located in No. 1 Hangar, caters to the requirements of the Picton Camp units.
12. Training continued from 1946 to 1952 using the 3.7-in HAA gun and Canadian radars. During this time, the MZPI, forerunner of the 4 Mk 6 Radar series, was produced. In 1952, the School received 90mm guns and modern USA fire control (Radar) systems,

and in late 1953, the Radar AN/MPS 501B, finest plan position indicating radar in the world, was received from Canadian manufacturers and put into service. This has now been replaced by an improved set, the Radar AN/MPS 504.

13. In 1953, Guided Missile training was started and today this type of instruction is given to all ranks representing most of the arms and services.

14. Throughout the years, the School, besides training Regular and Militia personnel, has started many young officers on their careers through the COTC training programme. As well, for several summers, School instructors introduced the new science of radar to High School cadets, at Valcartier, P.Q.

15. A western component of the AA School, which was opened in Esquimalt, B.C., in 1948, for the purpose of training Western Canadian AA units, was closed out in 1952. Its AA personnel were, for the most part, absorbed in the establishment at Picton.

16. In late 1953, Picton Camp took over the first of a series of new buildings being constructed to the east of the air-strip. In the plans for the future development are the other buildings of a complete camp, although certain of the facilities in the present camp will be retained.

17. In 1954, 1 LAA Regt RCA, a component of the 1st Cdn Inf Division, was formed and based at Picton Camp.

18. In 1950, after less than a year of building, 200 PMQ houses were completed and in 1956 an additional 50. Constant improvement has now made "Picton Heights" one of the show PMQ areas of Canada. In 1951, a modern 15 room school was opened and today more than 400 children attend. Total population of the PMQ area is now nearly 1200 and is rapidly growing.

2. Royal Canadian School of Artillery

(Anti-Aircraft)

The School is responsible for all Anti-Aircraft Artillery training in Canada, except Basic and Advanced Training for recruits, and unit training, which is the direct responsibility of the Regular AA Units. Officer qualifying courses and AA Instructor courses at all levels are conducted for both Regular and Militia personnel and the Summer Training period includes Militia Summer Camp and courses for COTC personnel. Page 6 shows the administrative and training departments within the School.

3. 1st (AA) Bty

Picton was initially the home of 127 and 128 MAA Btys RCA. These two batteries were originally organized with both LAA and MAA components but were later relieved of the former commitment by the formation of 1 LAA Regt RCA. In the summer of 1955, 128 MAA Bty was disbanded. 127 MAA Bty was disbanded in 1957 and the majority of personnel were

MILITARY ORGANIZATIONS OF PICTON CAMP

1. Camp Headquarters

Picton Camp, in itself, has no distinct command and administrative organization. The Commandant, RCSA (AA), has been appointed Commandant, Picton Camp. The Administrative Staff of the School also carries out all necessary administration which concerns the Camp as a whole.

2. Royal Canadian School of Artillery

(Anti-Aircraft)

The School is responsible for all Anti-Aircraft Artillery training in Canada, except Basic and Advanced Training for recruits, and unit training, which is the direct responsibility of the Regular AA Units. Officer qualifying courses and AA Instructor trades courses at all levels are conducted for both Regular and Militia personnel and the Summer Training period includes Militia Summer Camp and courses for COTC personnel., Page 6 shows the administrative and training departments within the School.

3. MAA (R) Units

Picton was initially the home of 127 and 128 MAA Btys RCA. These two batteries were originally organized with both LAA and MAA components but were later relieved of the former commitment by the formation of 1 LAA Regt RCA. In the summer of 1955, 128 MAA Bty was disbanded. 127 MAA Bty was disbanded in 1957 and the majority of personnel were

absorbed by RCSEA (AA) to form the Trials and Equipment Evaluation Battery.

4. 1 LAA Regt RCA

On 1 Apr 54, 1 LAA Regt RCA, a unit of the 1st Cdn Inf Div, was formed with its Regimental Headquarters and two batteries at Picton and one battery at Esquimalt, B.C. The Regiment took over the responsibility of depot training for all AA Units in Canada, as well as their own recruit and AA training. Included in the personnel at Picton are those of the first French-speaking AA Artillery Battery. In 1954, arrangements were completed for the setting up of 1 LAA Regt LAD, RCEME, at Picton. Late in 1957, 4 LAA Bty was disbanded and some personnel were absorbed by Batteries of the Regt in Picton.

5. In late 1955 the role of this unit was changed to medium anti-aircraft. Since that time MAA equipment has been issued and an intensive training programme was initiated to familiarize personnel with their new weapons. Although the unit still maintains its designation as LAA it is in fact issued with and fully trained on medium anti-aircraft weapons. Late in 1957, the Minister of National Defence announced, through a press release, the 1 LAA Regt would become the first Guided Missile unit in the Canadian Army.

6. 3 Works Company, RCE

Picton Detachment

This Detachment supplies all Engineer services for the Camp as well as supervision of new construction.

In addition to Camp responsibilities, the Detachment services 26 COD at Cobourg and Militia armouries in the area as far as Peterborough, Ontario.

7. 210 Workshop, RCEME

This unit handles repairs which are beyond the unit capabilities, of all electrical and mechanical equipments of units in Picton Camp. It performs similar services for Militia units in the vicinity.

8. Picton Camp MIR

This small sub-unit is supplied from facilities of No 5 Det RCAMC, Kingston. It consists of a Medical Officer, a Nursing Sister, and several NCOs, one of whom is a Hygiene Assistant. A five-bed Sick Bay is available for holding minor cases for short periods but more serious cases are transported to Kingston Military Hospital. A dependents' clinic is also conducted for wives and children of military personnel in the Camp.

9. 13 Dental Clinic, 13 Company

RCDC

This small clinic is responsible for the dental inspection, and treatment, of all military personnel in Picton Camp.

CIVILIAN ASPECTS OF PICTON CAMP

1. An integral part of Picton Camp is its civilian population. Like all other large camps in Canada, permanent living accommodation has been provided for the dependents of personnel stationed at Picton Camp. The permanent married quarters are situated about one-half mile from the main camp and consist of two hundred and fifty housing units of varying sizes.

2. Personnel and dependents living in permanent quarters are proud of their community, and the careful attention to lawns and flower beds makes it a model for all projects in the area. An Executive Council is appointed annually to deal with the problems in the housing area, and there are committees elected to handle such matters as recreation, Home and School activities, and other phases of social life in the community.

3. St. Barbara's School

A public school of the most modern design has been provided for the children living in the Married Quarters and provides schooling from Kindergarten to Grade 8. School facilities, at present, are stretched and additional class-rooms have been provided in the Picton Armouries.

4. In addition to providing school facilities for the children, St. Barbara's also acts as a Community Centre for the Married Quarters. Every evening of the week and during week-ends the school is a centre of activity and a meeting place for the following organizations: Scouts and Cubs, Guides

and Brownies, Home and School Association, Recreational Committee. On Sundays, the school becomes a Sunday School. In late 1954, commencement was made on the construction of two chapels in the PMQ area. These were completed in 1955 and regular Protestant and RC services are now held weekly.

Camp Groceteria

5. For the convenience of personnel living in permanent quarters, a groceteria has been provided in the housing area. Here, residents may purchase a full line of grocery items at prices comparable to most large city stores.

Sunday evenings. To handle the large numbers of COTC officers each summer, an additional Officers' Mess is opened each year with complete messing and bar facilities, and COTC personnel may use either this or the main Officers' Mess on evenings and week-ends.

Sergeants' Mess

An excellent Sergeants' Mess offers full facilities to NCOs and Senior RCOs on the station. A Ladies Room is provided where ladies may be entertained on Mondays, Tuesdays and Thursdays, and on Saturday and Sunday evenings the ante-room is open to them.

Junior NCOs Mess

Facilities have now been provided, both wet and dry, for Junior NCOs of Pictou Camp. Ladies may be entertained on Saturday and Sunday evenings.

MESSES AND FACILITIES

1. Newcomers of all ranks to Picton Camp will find excellent Messing and other facilities within the camp. An outline of the major facilities available in the Camp Area is given below.

2. Officers' Mess

The RCSA (AA) Officers' Mess provides full messing and quartering facilities for officers of the Camp. A Ladies Room, at the rear of the mess, is a show place in the area and in addition, ladies are admitted to the ante-room on Saturday and Sunday evenings. To handle the large numbers of COTC officers each summer, an additional Officers' Mess is opened each year with complete messing and bar facilities, and COTC personnel may use either this or the main Officers' Mess on evenings and week-ends.

3. Sergeants' Mess

An excellent Sergeants' Mess offers full facilities to WOs and Senior NCOs on the station. A Ladies Room is provided where ladies may be entertained on Mondays, Tuesdays and Thursdays, and on Saturday and Sunday evenings the ante-room is open to them.

4. Junior NCOs Mess

Facilities have now been provided, both wet and dry, for Junior NCOs of Picton Camp. Ladies may be entertained on Saturday and Sunday evenings.

5. Gunners Canteen

Both wet and dry canteen facilities are provided in the Camp for gunners. The Gunners Wet Canteen provides facilities for the entertainment of ladies on Wednesday, Saturday and Sunday evenings. The Dry Canteen and Soda Bar provides for the purchase of small necessities, sandwiches, ice cream, milk shakes, cigarettes and other goods.

6. Camp Theatre

The Camp Theatre provides facilities for the showing of training films to all courses during duty hours.

7. Drill Hall and Sport Stores

The Camp Drill Hall is set up to provide recreational facilities including badminton, basketball, volleyball, boxing, and floor hockey. The sport stores, located in the Drill Hall, carries equipment for these sports as well as for most other sports.

8. Camp Barber

A barber shop is located in the Camp and is open daily during duty hours. Prices here are lower than current town prices for hair-cutting and other barbering services.

9. Post Office

The Camp Post Office, at present, performs only the function of sorting mail for distribution to units and institutes. A properly staffed Post Office is planned which will give full postal facilities to all Camp personnel. Stamps are on sale in Messes at present but money order and mail registering facilities do not exist and must be handled in the Town Post office.

10. Banking

No banking facilities exist in the Camp but branches of some major banks are located in the Town of Picton.

11. Communications

No telegraph facilities exist in the Camp but a Canadian Pacific telegraph office is located in Picton. The Camp has military teletype communication with Kingston and through this, with all major military centres in Canada, for use in transmitting Service Messages.

12. Fire Hall

Fire protection for the Camp Area, including Married Quarters, is provided by the Camp Fire Hall, which is staffed by civilian fire fighters. Fire fighting personnel and two fire trucks are available on a twenty-four hour basis to answer all calls.

RECREATIONAL FACILITIES

1. Prince Edward County, Ontario, in which Picton Camp is located, is a major tourist centre during the summer months, and as one would expect, a wealth of vacation and sporting attractions are to be found in the area. As has been mentioned, facilities exist within the camp for basketball, volleyball, badminton, indoor hockey and boxing. Other recreational and sporting facilities to be found in the area are listed below.

2. Golf

The Picton Golf and Country Club offers a very attractive nine-hole course and special rates are in effect for military personnel. Some golf equipment is held in the Sports Stores for loan to golfing enthusiasts.

3. Fishing

The waters surrounding the Isle of Quinte are a fishing paradise. Good fishing may be had within walking distance or a short motor trip from the Camp. Main game fish in the area are bass, pickerel, pike and muskies. Numerous prize winning muskies have been landed in the immediate vicinity.

4. Boating

A yacht club is located in the Town of Picton and the Bay is one of Canada's beauty spots. This deep, protected body of water forms a natural amphitheatre for speedboat races. The annual Picton regatta and speedboat racing attract contestants

from all of Canada and the United States and many thousands of spectators.

5. Swimming

Excellent natural beaches exist in the area and the Outlet and Sandbanks Beaches attract thousands of tourists annually.

6. Skating and Hockey

Outdoor rinks are normally constructed in the Camp and Married Quarters area. Two indoor rinks are located in the Town of Picton.

7. Bowling

Excellent bowling alleys are located in the Town of Picton and bowling leagues from the Camp make use of these alleys on several nights a week during the winter. The Garrison operates both a Men's and Ladies' League.

8. Hunting

The numerous marshy patches along Prince Edward County's shores make the area a natural feeding ground for ducks. Very good bird shooting exists in almost all areas. For larger game, such as deer, it is necessary to leave the County and travel north by motor car.

9. Rifle Association

The Garrison Rifle Association operates target shooting practice and inter-Garrison Competitions, and

competes with other Army and civilian shooting teams in the Area. A Garrison Pistol Club works in close co-operation, and a fine skeet range has now been added for enthusiasts of this sport.

10. Television

One of the outstanding features of Picton Camp is its television reception. Situated on one of the highest points of land in the Island County, the camp's forest of TV aerials pick up both the USA and Canadian networks, delivering a picture of "moving picture" quality. All messes are provided with TV for the entertainment of personnel.

11. General

Other facilities exist, either in the Camp or in the area, which have not been mentioned, but it would not be untrue to say that nearly all tastes in sport or recreation may be catered for, in some form, at or near Picton Camp. The taxi fare from Picton Camp area to the Town of Picton is 75 cents.

NEIGHBOURING TOWNS AND CITIES

1. Picton (Population - 5000)

The Camp is located on a flat plateau overlooking the town of Picton. The outskirts of town are about one mile from the Camp by road. The surrounding area is mostly a farming district and, in summer, a tourist resort. The town offers a theatre, bowling alleys, golf club, yacht club, three hotels, shopping centre, skating rink and other normal business and recreational facilities.

2. Belleville (Population - 21,000)

The city of Belleville is twenty-two miles from Picton, just off the Isle of Quinte. Belleville offers all of the large city amenities and has excellent theatre and shopping facilities.

3. Kingston (Population - 41,000)

The city of Kingston, a community steeped in Military History, is located thirty-nine miles from Picton, (crossing the Bay of Quinte by way of the free Glenora Ferry). Points of interest to military and civilian personnel alike are Fort Henry, Canadian Army Staff College, the National Defence College, Royal Military College, Royal Canadian School of Signals, Royal Canadian School of Electrical and Mechanical Engineering. Boat tours through the beautiful Thousand Islands are conducted several times daily during the summer. Bus service from Picton to Kingston operates on one of the schedules listed in the following pages.

BUS SCHEDULES

BELLEVILLE - PICTON BUS SERVICE

EFFECTIVE OCTOBER 27, 1957

SMITH BUS LINE LIMITED

140 Burnham St. Phone WO 8-8979
Belleville, Ont.

LEAVES BELLEVILLE
BUS TERMINAL
PHONE WO 2-3193

LEAVES PICTON
ART MORGAN'S
LUNCH COUNTER
PHONE 42

	LEAVE PICTON	LEAVE BLOOMFIELD	LEAVE MT. VIEW	LEAVE ROSSMORE	ARRIVE BELLEVILLE
Daily.....	10.40 a.m.	10.50 a.m.	11.10 a.m.	11.20 a.m.	11.30 a.m.*
Daily.....	5.05 p.m.	5.15 p.m.	5.35 p.m.	5.45 p.m.	5.55 p.m.*
	LEAVE BELLEVILLE	LEAVE ROSSMORE	LEAVE MT. VIEW	LEAVE BLOOMFIELD	ARRIVE PICTON
Daily.....	12.45 p.m.*	12.55 p.m.	1.05 p.m.	1.25 p.m.	1.35 p.m.
Daily.....	6.30 p.m.*	6.40 p.m.	6.50 p.m.	7.10 p.m.	7.20 p.m.

*—BUS MEETS TRAIN AT C.N.R. STATION, BELLEVILLE

ALL TIMES ARE STANDARD

Buses for Charter

Time	By Belleville	By Picton
7:10	3:30	6:00
8:30	4:50	7:10
12:15	6:05	8:00
1:25	7:15	9:10

AS DARTMOUTH SAVING TIME WHEN IN EFFECT; BALANCE OF YEAR AS STANDARD TIME.

KINGSTON - PICTON Bus Service

(Blackburn Bus Service)

Agent - Mrs. M. Blackburn

Phone 1273

Picton Terminal - Picton Market Place

MONDAY - SATURDAY

SUNDAY & HOLIDAYS

Picton	-	12:00 noon	Lv Picton	-	7:30 pm
Kingston	-	1:30 pm	Arr Kingston	-	9:00 pm
Kingston	-	5:45 pm	Lv Kingston	-	9:45 pm
Picton	-	7:10 pm	Arr Picton	-	11:08 pm

(WINTER SCHEDULE)

TRENTON - PICTON Bus Service

(Rathbun Bus Service - Connections with
Colonial Coach Lines to Toronto)

Agent - Esso Service Station

Phone 822

Picton Terminal - Esso Service Stn.

	■	⊖		■	⊖	+		
	Exc	Exc	Fri	Exc	Exc	Sun		
	Sun	Fri	Sun &	Sun	Fri	&		
		Sun &	Hol	Sun &	Sun &	Hol		
		Hol		Hol.				
	am							
Picton	7:10	3:30	6:00	Lv Trenton	12:15	6:05	8:00	10:00
Trenton	8:20	4:40	7:10	Arr Picton	1:25	7:15	9:10	11:10

READ AS DAYLIGHT SAVING TIME WHEN IN EFFECT; BALANCE OF YEAR
AS STANDARD TIME.

- Will not operate Thursday, April 3rd and Monday, May 19th.
- ♠-- Will also operate Friday April 4th and Monday May 19th.
- ⊙-- Will also operate Thursday, April 3rd and Monday, May 19th.
- †-- Will also operate Thursday, April 3rd.
Cancelled Friday, April 4th.

\$ 10.00