

igation com-

ek will com-  
o the Defence  
mmunications  
lectures on  
eriments and  
d on there. Of  
be the Cana-  
der Satellite  
al radar sys-  
airborne com-

Wednesday the  
National Re-  
Establishment  
erimental and  
nt. By Thurs-  
be in Toronto  
General Elec-  
efings on some  
nts produced  
CF-104 pro-  
the party will  
Aviation Med-  
will be given  
udies on such  
f Acceleration  
and "Disorien-

iden but weary  
back in Winn-  
ight on Friday,  
ff before start-  
s on the infor-  
obtained.



AIN  
TS?

FF NOW  
W-COST  
URED

PIA  
AN

NK OF  
COTIA

d GARRY  
2-8451

d...



# Voxair

## AN AIRFORCE NEWSPAPER



Authorized second class matter by the Post Office Department, Ottawa, Ontario.

The views expressed herein are not necessarily those of the Royal Canadian Air Force or the staff of VOXAIR.

VOLUME 10, No. 48

WINNIPEG, MANITOBA

DECEMBER 8, 1961



Taking a brief pause beside their aircraft after a visit to "Trapper Joe" ten miles outside of Churchill, Ken Cavanagh of the CBC (at right) talks with crew (left to right) F/O W. H. Thomson, F/O P. Philip, F/O L. Hazel, F/O K. McKinnon.

## Assignment "Canada" Visits The RCAF

For his first encounter with the military, Ken Cavanagh of CBC Toronto, a radio producer for the Dominion Network program "Assignment" chose RCAF Station Winnipeg this past week.

Mr. Cavanagh has been travelling across Canada — working his way west from St. John's, Newfoundland — since the middle of July, taping a series of interviews in, about and around the country. He arrived in Winnipeg some two weeks ago, and, after taping some of his broadcasts in the downtown area, he then moved onto the station in an effort to find out how an RCAF organization of this size operates. Following that he moved north with the Air Force, flying to Churchill in a Dakota under the Command of F/O H. Thomson.

In the Fort Churchill area — not hampered too much by temperatures as low as -32 degrees — interviews were taped with such tourist attractions as "Trapper Joe," Brother Voland of the Oblate Brothers Eskimo Museum, Wing-Commander Bryant (Officer Commanding RCAF Fort Churchill) and a group of young girls working there as school teachers and secretaries.

Here in Winnipeg, Mr. Cavanagh recorded material with Group Cap-

tain Mitchell, and with officers at the Rescue Co-Ordination Centre.

As he explains his work . . . the trip was planned along the lines of a young Canadian's trip across his own country.

"It was originally set up for three months," he told Voxair, "but very soon after I started things began to get out of hand. The one big thing that comes across to a person on such a trip as this is a simple thing, really . . . the huge, vast, under-estimated sheer size of this country."

His travel log is a testimonial to that. Since starting, he has driven just under 12,000 miles . . . travelled more than 1,500 miles by boat . . . and now, taking in the Churchill flip, some 1,300 air miles.

"In addition to the travelling," Mr. Cavanagh points out, "I've been forced to earn my money too,

(Continued on page 4)

## Outdoor Hockey Rink Nears Completion

The Community Council, past and present, realizing the need of a community ice surface for station personnel and dependents, offered to put up a share of the cost of an outdoor rink if Station Fund would contribute the balance to build one. As is known, this was approved.

The new hockey and skating rink, located near the RC Chapel, is now in the final stages of construction and has already been initiated by several of the youngsters in the Rental Unit area.

While the Station Commander realizes that an outdoor rink does not represent the ideal picture for hockey and skating facilities, it is much better than having none. A large outdoor rink built to specifications, such as is the case in this instance, will not suffer for lack of management or maintenance as a Rink Manager will be appointed for this purpose.

F/L Stables, of TCHQ, and one of our councillors, has done an excellent job in holding down the cost of this project. With many items to be considered such as carpentry, the ice bed, trenching, piping and electrical elements, the quality of the various necessities have been improved upon with the total expenditure still under the allocation and the initial estimates.

A fact unknown to many is that inquiries were put forth as far back as four years ago regarding the construction of an indoor rink here at Station Winnipeg. Replies regarding this prospect at the time that a rink as proposed by this unit would be available at a cost of up to \$290,000 and the standard design rink as was erected in Clinton would run between \$190,000 and \$230,000. Any unit requesting such, Winnipeg in this case, would be required to pay between one third and two thirds of the total cost. It is logical that NPF was and is in no position to absorb an expenditure as heavy as such especially when it would tie up any major enterprises or renovations for a full seven years afterwards.

A hangar site and the Old Drill hall have also been under consideration during the past two years and were not found to be feasible. The year round use of the Old Drill Hall is self explanatory, being utilized weekly for the station bingos and monthly for dances being only

(Continued on page 7)

## Decay Now — Pay Later

Dental caries or decay is the most prevalent disease of mankind outside of the common cold. It does more premanent damage to children than all other diseases put together.

Dental decay is a disease caused by the action of certain bacteria in the mouth which acts on sugars to form acids. This acid causes the breakdown of the enamel and the formation of a cavity. This process will progress unless arrested by the dentist until the formation of an abscess and the loss of the tooth results.

Nearly everyone has these acid producing bacteria in their mouths (96%). The only way to minimize the amount of decay is to reduce the amount and number of times sugar is eaten.

All of us are going to have some sugar (sweet food, drink), the important consideration is when we have it, how frequently and the length of time it remains in the mouth. Sweet foods, within reason, which are consumed with meals, will not do us a great harm if the teeth are brushed immediately after eating. We are mainly concerned with sweet things consumed at other times. Such things as candy, especially the hard or sticky variety, gum, sweet sticky foods etc. — these are the culprits. If these acid producing bacteria are present in the mouth, it naturally follows that, the more sugar we eat, the more acid is produced and the more decay develops. One thing can be said, if a person's teeth are decaying, that person is having too many sweets. Decay is not possible unless sugar is present in some form.

There may be a few of you who sit back and say that your children have no decay just because you cannot see it. This is probably so. In a survey by public health workers in Canada it showed the following:

- At age two —30 out of 100 children had decay
- At age three —60 out of 100 children had decay
- At age four —75 out of 100 children had decay
- At age seven —90 out of 100 children had decay
- At age eighteen —98 out of 100 children had decay

Do you still think that your children have no dental decay? You had better let your dentist decide this.

(Continued on page 7)



VOXAIR is published every Friday with the kind permission of The Commanding Officer, Royal Canadian Air Force Station Winnipeg, Stevenson Field, Winnipeg, Manitoba.

ARTICLES may be reprinted by other publications providing credit is given to VOXAIR.

EXECUTIVE AND EDITORIAL OFFICES: R.C.A.F. Station Winnipeg, Stevenson Field, Winnipeg, Manitoba. Telephone VE 2-1311. Local 211. Printed by The Wallingford Press Ltd., 303 Kennedy St., Winnipeg, Manitoba.

VOXAIR is distributed to every R.C.A.F. Mess, Lounge, Reading Room and Library in the world. Subscriptions are priced at 1 year (52 issues) \$2.30; 3 years (156 issues) \$7.00; 5 years (260 issues) \$11.00. Postpaid anywhere in the world. Address all subscription correspondence to: Subscription Department, Voxair, R.C.A.F. Station Winnipeg, Stevenson Field, Winnipeg, Manitoba. Applications from overseas should be accompanied by an international money order for the necessary amount. Canadian subscribers should make their cheques payable to: R.C.A.F. Station Winnipeg Station Fund.

ADVERTISING RATES available on request.

Honorary Editor ..... W/C W. B. M. MILLAR
Managing Editor ..... F/O HOWIE THOMSON
Editor ..... F/O CHARLIE WHITE
Assistant Editor ..... F/L JOHN BEMISTER
Associate Editors ..... F/L W. GRYBA, LAC L. A. BICKNELL
Contributing Editors ..... F/O G. M. HOPKINS, WO1 J. W. VAN BUSKIRK
Sport Editor ..... CPL. FRANK BINKUS
Photo ..... STN. PHOTO SECTION
Advertising ..... F/O G. A. DAWSON, LAC G. BOUTET



EDITORIAL CORNER

A Christmas Concert

Earlier this week, it was our very great pleasure to attend the dress rehearsal of a local Greater Winnipeg choir, prior to their presentation of a Christmas concert which is now a thing of the past. However, as is always the case with such worthy efforts, the feeling this choir group left with their audience is a lasting thing, and will live for a considerable period. In passing, perhaps a word on the underlying spirit in such a presentation will not be amiss.

To those who do not attend at least one such function during the Christmas season, one part, however seemingly inconsequential, of the innate happiness of mankind at this time of year will be missing. To those people who give freely of their time and talent toward bringing the spirit of Christmas closer to the hearts of Christian people should go the thanks of all.

Christmas, since time immemorial, has been a time of rejoicing: rejoicing which is born to the spirit of giving. The first Christmas, which bestowed upon the world the greatest gift possible, also marked the birth of the true spirit of rejoicing which has been felt by Christians in the act of giving since that time. Down through the ages, the pattern of their spirit of giving has undergone many changes, and, even now, the Christmas festival is marked by great differences throughout the Christian world. However, there is one facet of the pattern which remains changeless, and this is the spirit of happiness imparted to all Christians in the act of giving.

If we, as self-avowed Christians, can derive such happiness from the simple act of giving, then surely we are faced with a paradoxical situation. It is only the very small minority of mankind who gain happiness from inflicting misery, and dedicate their lives to this pursuit. For the remainder of us, the choir group mentioned above can provide a fitting example, and can provide us with a worthwhile aim during the period which inevitably transpires between Christmases. In their activity, we can all learn something, and that is that our giving should not be restricted to the Christmas season only.

Giving, in this sense, does not contain the connotation applied by many: that of parting with hard-earned material or the symbol thereof. Giving of our time in support of voluntary charitable groups, finding the idle hour in which to pass the time of day with shut-ins, passing on our physical assistance to those who are not so fortunate: these, too, comprise the true spirit of giving. With these acts, just as with the more materialistic giving, can come happiness. Our selflessness in projects such as these, with a little emphasis during the Christmas season, will increase our happiness manyfold, and will undoubtedly serve the world in our Christian endeavour of making it a better place in which to live.

ARTICLE DEADLINE
FOR XMAS ISSUE 1200 HRS. 14 DEC. '61.

Announcement

DENTAL HEALTH WEEK

The week 11th - 15th of December 1961 will be observed as Dental Health Week. Parents are invited to discuss Oral Hygiene and general dental preventative measures with Dental personnel on duty in Bldg. 90 each evening between 1845 and 2100 hours Monday to Thursday inclusive.

THEATRE ENTERTAINMENT

SHOWTIME

Weekdays—1900—2100 hrs.
Sundays—1830—2100 hrs.
Sat. Matinee—1300—1500 hrs.
Sun. Matinee—1400 hrs.

FRIDAY, 8 DECEMBER The Green Helmet
SATURDAY, 9 DECEMBER Matinee Ghost of the China Sea Evening The Lawless Breed
SUN.-MON., 10, 11 DEC. "Pepe"
TUESDAY, 12 DECEMBER Blueprint for Robbery
WEDNESDAY, 13 DEC. Strangers When We Meet Adult
THURSDAY, 14 DECEMBER Armoured Command

THEATRE NOTES

- 1. Due to the length of "Pepe", it will be shown at 1830 and 2115 on 10 and 11 December. The Sunday Matinee will be at the regular time, 1400 hrs.
2. Due to the running time of "The Alamo", to be shown in the Station Theatre on the 21, 22 and 23 of this month, it will be shown ONCE EACH EVENING ONLY, beginning at 1930, and once on Saturday afternoon beginning at 1300 hours. Weekday admission prices will be charged for the Saturday afternoon presentation.
3. The Station Theatre will be closed on the 24, 25, and 31 of December.
4. Special children's matinees will be presented on 26 and 28 December at 1300 and 1500 hours.

Letter to the Editor

1 December, 1961

The Editor, Voxair.

Sir:

May I offer congratulations on the December 1 issue of "Voxair," surely the liveliest and most stimulating to hit us between the eyes in many a moon.

Its success, of course, is based on the time-worn journalistic truism that nothing sells papers like strife and conflict, and the spectacle of the entire staff of the paper leaping to arms to defend their editorial honour was heart-warming to an old newsman. I half expected to find rebuttals in the want-ads, too.

May I therefore suggest that, in the interests of brighter reading, we see the inclusion of more and more angry comments from readers and staff members in the future. Several subjects around the station are just begging to be aired, and should engender enough controversy for a year's issues.

For instance, just to get the ball rolling, will somebody explain why the C.E. section doesn't quit moonkeying around with Building 2 and just leave it to settle quietly into the ground.

Yours truly,

IN VINO VERITAS.

Advertisement for Seven-Up featuring a bottle of Seven-Up and a tray of food. Text: Christmas... food...and Seven-Up

Are You Earning \$300.00 Per Month? \$400.00? \$500.00?
In 20 years you will have earned \$72,000 - \$96,000 - \$120,000

HOW MUCH



A. GRIERSON GR 5-7310

WILL YOU



N. McMILLAN VE 2-1678

HAVE?

Call Your "Best Friend Financially"
Business Phone Whitehall 3-0361

Investors syndicate Also distributor and Investment manager for: Investors Mutual of Canada Ltd. Investors Growth Fund of Canada Ltd.

"CAL"

Well—We've formed reader, e criticism of the ( was not construct born of anger. For seems unfit for resent the infere corrupt tender y and untrue state jokes are too ris protect their chil ous nature which movies, and on "risk" of seeing, offended the sens few), we apologi CALL 308 in its everyone in the as always we wil from our readers

JIM SEZ—"A of the "beat gen

Yea Bombers! and fan in the co ever seen. (Woi urday — we of two after losin

Have you h it's flavored like

Well kids, th on, and we've ha delivery to kids : draw a Christma deliver it, with a Bay, or call old V We will draw fiv stocking full of g who can't be ho

DOUBLE TA rs in a sports

We went to with the big turn that most people our congratulati widing entertainn

John: "What stripe
Joan: "I don
John: "I don off y

Time to go : remember: Tight peels.

CORPORAL ENTERT.

A Turkey Bin the Club on the commencing at 2 There will be grand prize con hamper, at the price of \$1.00 pe Come out and mas supper and evening at the cl

The Corporals committee wish t members and fr porals Club, a v mas and a Happ New Year.

ENT

# "CALL 308"

by "WAG"

Well—We've been told what for by an irate, if somewhat misinformed reader, eh? We are always happy to hear some constructive criticism of the old corner—but in this case we feel that the criticism was not constructive, and approached something bordering on petulance born of anger. We were interested to read that our column to this reader seems unfit for consumption by adults or children. We particularly resent the inference that the jokes we write are of the sort that may corrupt tender young minds. This we feel is a totally incomprehensible and untrue statement, and we can only hope that those who feel our jokes are too risqué for family reading will make certain that they protect their children from the corrupting influences of a far more serious nature which are so evident in newsstands, on television, in the movies, and on the streetcorners where we, and they, run the daily "risk" of seeing, hearing, and experiencing these influences. If we have offended the sensibilities of some, (and we suspect that they are very few), we apologize profusely, but at the same time, we will continue CALL 308 in its present format, and strive to provide something for everyone in the column. We feel that the column can improve, and as always we will hope for sound, constructive, and pertinent criticism from our readers.

\* \* \* \*

*JIM SEZ—"An old timer is one who can remember when a member of the "beat generation" was a lad leaving the woodshed!"*

\* \* \* \*

Yea Bombers! What a ball game — it's all been said by every writer and fan in the country, but we think it was one of the best games we've ever seen. (Wonder how many sentimental bets were paid off last Sunday — we know three "Easterners" who are looking for a shirt or two after losing theirs!)

\* \* \* \*

*Have you heard about the new dog food they've brought out? It's flavored like post-man's ankles!*

\* \* \* \*

Well kids, the WAG "MAKE CHRISTMAS HAPPY CONTEST" is on, and we've had some really beautiful cards arrive at our house for delivery to kids in hospital on December 23. The rules are simple — draw a Christmas card, put your name and address on the back, and deliver it, with a small gift of around 50c to WAG's house at 36 Listowel Bay, or call old WAG at VE 2-4569, and we'll drop around to pick it up. We will draw five of the names on Dec. 20, and winners will get a large stocking full of goodies. The gifts and cards will be presented to kids who can't be home for Christmas.

\* \* \* \*

*DOUBLE TAKE DEPARTMENT: A genius is a guy who can change cars in a sports car without getting his face slapped.*

\* \* \* \*

We went to Station Bingo the other night, and were impressed with the big turnout — seems to be a very popular activity — we know that most people know all about Station Bingo, but would like to add our congratulations to the people who run the show — they are providing entertainment for a great many station personnel and dependents.

\* \* \* \*

*John: "What has 68 legs, green eyes, and a pink body with purple stripes?"*

*Joan: "I don't know. What is it?"*

*John: "I don't know either, but just the same, you'd better pick it off your neck."*

\* \* \* \*

Time to go now — get your Christmas shopping done early, and remember: Tight sweaters have tripped up more men than have banana peels.

## CORPORALS CLUB ENTERTAINMENT

A Turkey Bingo will be held in the Club on the 15th December 61, commencing at 2030 hours.

There will be 15 games plus a grand prize consisting of a food hamper, at the very reasonable price of \$1.00 per card.

Come out and win your Christmas supper and have an enjoyable evening at the club.

\* \* \*

The Corporals Club executive committee wish to extend to all the members and friends of the Corporals Club, a very Merry Christmas and a Happy and Prosperous New Year.

## TURKEY SHOOT

The RCAF Station Winnipeg Rifle Club will be holding it's annual Turkey Shoot in the 25-yd. range at the Recreation Centre. The range will be open daily from 1600 hrs. to 2200 hrs. from 9th to 17th Dec. 61. Come in and win your Xmas turkey. There are two competitions. Skill and luck. Fair to all as Rifle Club team members are not allowed to shoot skill competition. Come in and shoot as an individual or as a section. Contact Sgt. Arthurs at Local 218 to arrange for section shoots at anytime the range is not normally open. Targets are 50c each. Come in anytime and try for your Xmas turkey.

# AIR FORCE AFIELD

By HOPP

Boat Building Bonanza

Home boat building has always held some popularity, but in the last few years the "do-it-yourself" craze has really taken hold. Many manufacturers now cater exclusively to the home builder and business is brisk.

Proper care during home construction will give a product comparable to those bought complete from the retail dealer. Home building gives a sense of accomplishment for the builder, utilizes free time in a worthwhile fashion, and cuts the costs of a ready made product by about a third. It also allows the user to alter the design to suit exactly the use for which he intends the boat. This could involve anything from adding towing attachments for water skiing, to a special seat arrangement for more freedom while fishing.

There are two methods of attack available to the prospective boat builder. He can obtain a blueprint of a craft and purchase all the materials himself, or he can purchase a packaged kit which includes the material required to any degree of completeness he desires.

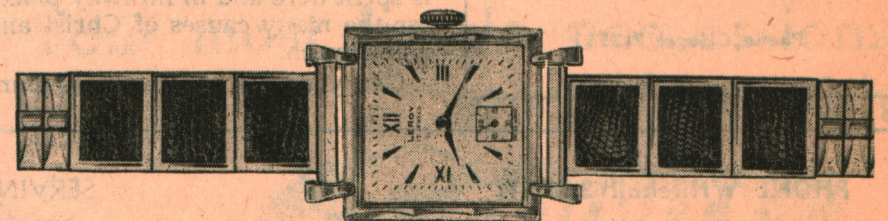
We are fortunate in having the Station Hobby Shop to use for such projects. Boats can be built here rather than in home basements and garages. Cutting a back wall of a house to get a boat outside is an expensive proposition, but has been resorted to by many a basement builder. The garage builder doesn't have this worry but the family automobile usually ends up out in the cold. The Hobby Shop not only provides the space, but the tools as well at a very nominal fee.

Over the last several years some fine looking boats have been made by station personnel using a plan drawing taken from True magazine. The design proved to be very popular and the fifth boat is presently being constructed from it. Such plans are often found in monthly publications and usually a lengthy write-up, complete with picture is attached. This gives the builder a good idea of what to expect from his finished product in the way of looks and performance.

Scaled plans complete with material lists can be obtained from any boat company for a wide variety of designs for less than a dollar. A plan is much easier to modify than a kit, and it allows you to use the material you wish. However, it is easier to foul up construction as measurements are critical and a proper sequence must be strictly adhered to. Full scale patterns can also be obtained, but at extra cost. They may be well worthwhile, however, especially for the inexperienced. The patterns are used to trace outlines on your wood before you cut the parts. It is an easy system and saves time and costly errors.

A package boat is the answer for persons with less time and skill than the plan builders, but more costly. The kits come in three general categories; complete, semi-finished and prefabricated. The complete kit contains everything needed during construction which includes such items as screws, glue, hardware, bedding compound etc. All component parts are cut to size and step by step construction directions are given. The semi-finished kit has only the most difficult carpentry done for you. The frames, keelson, stern, transom and knee are the usual items included. Some kits are limited to the hull only. Other materials needed are bought locally and fitted to the craft as required. The prefabricated kit is the easiest to assemble and is rapidly increasing in popularity. Boats are completely built by the manufacturer, then disassembled, crated and shipped to you to be re-assembled. The savings however, are much less than by other methods.

For water fun and enjoyment next summer, now is the time for preparation. Space and tools are available, and all that is required is your time, and a modest financial investment. There is no limit to the style or material you select so your boat can be custom made for the type of use you have in mind.



"Le Roy" Diamonds and Pearl Necklaces Distributed by

## AMERICAN JEWELRY CO. LTD.

377 COLONY ST., WINNIPEG 2, MANITOBA

Enquire at your Central Warehouse or Station Canteen.

DECEMBER  
r Robbery

Y. 13 DEC.  
en We Meet  
lt

DECEMBER  
Command

1830 and 2115 on  
the regular time,  
be shown in the  
it will be shown  
d once on Satur-  
ission prices will

t, 25, and 31 of

26 and 28 Decem-

just to get the ball  
body explain why  
doesn't quit mon-  
with Building 2  
it to settle quietly

ruly,  
VINO VERITAS.

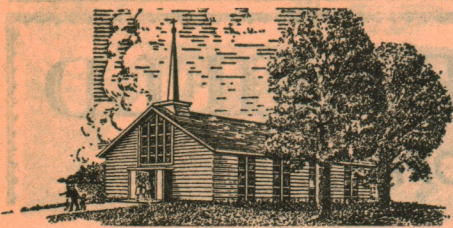
Christmas...  
and  
Up

?? \$500.00?  
100 - \$120,000

HAVE?

AN  
8

ment manager for:  
Canada Ltd.  
of Canada Ltd.



# Chapel News

## PROTESTANT CHAPEL NEWS

### SUNDAY, 10th December

0930 hours — Junior Congregation, Chapel; Primary, Lounge, Rec. Hall.  
 1100 hours—Kindergarten, Lounge, Rec. Hall; Nursery, Chapel Annex; Divine Service, Chapel.  
 1400 hours — Holy Communion, Anglican; Confirmation Class, Teenagers, ACC.  
 1900 hours — Senior Teens.

### MONDAY, 11th December

2015 hours — Chapel Guild Christmas Party.

### WEDNESDAY, 13th December

1615 hours — Junior Choir Practise.

### THURSDAY, 14th December

2000 hours — Senior Choir Practise.

### CHAPEL GUILD

The annual Guild Christmas party will be held in the Chapel Monday evening, 11th December at 8:15 p.m. Members are asked to bring fifty cents each to meet the costs of supplying a Christmas hamper for a family of nine children, mother and father that the Guild is looking after this Christmas. As well, members are asked to bring one tin of food, white-gift wrapped, and plainly marked on outside as to contents. These gifts of food will be used for the Christmas hamper and as well for some of our multiple sclerosis friends. A cordial invitation is extended to all Guild members and their friends to attend this Christmas party, Monday, 11th December, 8:15 p.m.

### USED CLOTHING

Good, warm winter clothing and overboots are still needed for several projects. Please phone the Chapel at local 417 for pickup. Just last week one hundred pounds was shipped north to help two Indian families.

### WEEKLY OFFERING ENVELOPES

Chapel supporters may obtain a set of weekly offering envelopes following Chapel Service, Sunday 10th December from one of our Chapel Committee members who will be on duty at the rear of the Chapel distributing these sets. Or you may have a set delivered to your door by phoning local 417 any afternoon. The use of weekly offering envelopes has increased Chapel givings throughout the RCAF. We have noticed the same increase here at RCAF Winnipeg. You might ask, 'Why bother about Chapel givings when the Chaplain and Chapel are supplied by the Crown?' The implication of course is that we are not like a civilian congregation with regular expenses for staff, Church operation and the like. We are fortunate in this regard, and keep only 25% of our weekly offerings for local expenses. The other 75% is forwarded at the end of each year to the Central Chapel Fund in Ottawa. This money is divided amongst the churches supplying Chaplains to the RCAF for their missionary work here in Canada and abroad. As well, some of this 75% supports the work of the Canadian Council of Churches, the Canadian Bible Society, and as well provides bursaries and scholarships to worthy students in our Canadian theological seminaries.

In 1960 for instance, our Station Chapel raised \$3,183.79, of which \$784.48 was expended locally and \$2,388.00 forwarded to the Central Chapel Fund, Ottawa. Throughout the RCAF, again for last year, \$84,804.78 was received as weekly offerings, \$25,710.17 expended at unit level, and \$62,885.12 forwarded to the Central Chapel Fund. Of the \$62,885.12, \$42,320.39 was divided amongst the churches supplying Chaplains for their missionary work, \$5,000.00 given to the Canadian Council of Churches, \$12,500.00 was used to establish five \$2,500.00 bursaries at our theological seminaries, and \$2,500.00 was sent to the five denominations to provide five \$500.00 undergraduate scholarships.

So you can see that your money given regularly through the blue Chapel weekly offering envelopes is spent here and in faraway places for the many causes of Christ and His Church.

Get your set of envelopes Sun-

day 10th December or phone local 417 for home delivery.

### SENIOR TEENS

Twenty-two Senior Teens attend the weekly meeting last Sunday evening and viewed the Moody Institute of Science film, "Windows of the Soul". The "Surprise Programme" was held over for the next meeting at 7:00 P.M. on 10 Dec. This will be the last regular meeting until the 7th January of the New Year. However, the Sr. Teens plan to gather on the 23rd Dec. to decorate the Chapel for Christmas. Following the decoration of the Chapel, the Sr. Teens will go carolling through nearby streets and then return to the Chapel Annex for refreshments.

### THE CHURCH SCHOOL

The Church School Staff has been hit hard by several transfers to other stations. Adults wishing to help with the work of the Church School are asked to contact the Chaplains at local 417.

### ROMAN CATHOLIC CHAPEL NEWS

Rev. F. A. Halle (W/C), Training Command Chaplain (RC).

Rev. J. A. Frederickson (S/L), Stn. Chaplain (RC)—Local 272.

### Sunday, 10 December 1961

#### MASSES

Sunday—0900 and 1100 hours.  
 Monday to Thursday—1630 and 1705 hours.  
 Friday (8 Dec.)—1115, 1615 and 2100 hours.

#### CONFESSIONS

Before all Masses and during Sunday Mass.

#### SUNDAY SCHOOL

After 9 o'clock Mass every Sunday.

#### BAPTISMS

By appointment. Usually Sunday afternoon.

### SAD STORY LIKE A LITANY, DEBT DESTROYS MARRIAGES

Debt will destroy a marriage quicker than liquor or "the other woman," say marriage counsellors Gwen Lundy and Gerald Lortie of the Victoria Family and Children's Service.

After two years during which they have ministered to more than 200 tottering marriages, they say no other single factor can equal debt.

"We hear the same sad little story repeated over and over again

like a litany," says Mrs. Lundy. "After the wedding everything looks great, both are working and the time purchases are made on the basis of two salaries."

When the first baby arrives, the young husband's pay cheque soon vanishes before the onslaught of creditors, she says.

Bill collectors begin beating a path to the door waving documents at the young mother and she unloads her anxiety on her husband. The groundwork is laid for a family row.

When the situation becomes so bad that the couple heads for a divorce lawyer, the only hope lies in providing a working plan that will consolidate the debts and ease the pressure on husband and wife.

Mrs. Lundy says liquor is next as a home-wrecker. A family with an alcohol problem didn't come to a counsellor until many weary, unhappy years had gone by. Alcoholics usually were able to smooth over their turgid outbursts with soft soap, vows of abstinence and an occasional dry spell. If the drinker admits he or she has a problem, then there is some hope of saving the marriage.

Mr. Lortie says he is convinced there's one special thing missing from the marriages that come into his office for repairs.

"What most of these poor people fail to realize is that marriage is a working relationship which flourishes only when it's kept alive and carefully tended by both parties. To make a go of marriage, man and wife must work at the relationship in the living room, the kitchen, the dining room and the bedroom.

### ASSIGNMENT "CANADA"

(Continued from page 1)

taping 97 broadcasts so far, and I have the prospect of another 60 so ahead of me. As I say, the whole thing has gotten out of hand."

"But," he adds, "I have a new respect now for this country of ours, and even though it's taken me this long to get just this far... I certainly haven't become the least bit bored. I'll be prepared for a long rest at the end of it, I think... but I certainly wouldn't have missed it."

As for the things that stand out in his mind on the trip so far, Mr. Cavanagh has a long list, including such things as the beauty of the Cabot Trail on Cape Breton Island, the wind-cleared mountains of western Newfoundland, a broadcast done at the top of the new 43-storey Bank of Commerce Building in Montreal, another done in the depths of a uranium mine at Elliot Lake, and, back to beauty again, the ruggedness of the new "Superior Route" highway across the top of Lake Superior.

The series of Air Force Interviews are scheduled to begin on Assignment tonight, December 8. They'll continue on the program for more than a week, running each weekday evening over CKRC at 8:00 p.m.

Boss: "Bob, I understand that you've been going over my head."  
 Bob: "Not that I know of, sir."  
 Boss: "Isn't it true that you have been praying for a raise?"

# SPO

# FR.

### CURLING

As mentioned two rinks went round of the Reg out a loss. They now been defeated there are many evenly matched. have not been last rock has been invited watch these games enjoyable after

The attention drawn to the list is posted in the names listed on paid-up member to curl as spares Mixed Leagues. short of players, spare list should be over membership rinks, since they which they share of curling fore requested to spares listed who instead of curling players, or pick some other rink.

This week end of the Inter-Sect with the two t group as follows:  
 Group A—AE (V MIR)  
 Group B—Accts Sup.  
 Group C—111KI Accts  
 Group D—AMU Tel. 1 Accts AE (W)

It was notice games there were in this week a throughout the tions are requested effort to p matches according. If a rink cannot a given date, 1 should be notified waste the time waiting for a t Winning rinks to fill in the board is the results on the executive and m es when the pr recording wins. Five junior ri

### STATION

### PRESS

### IN NEW

Pressing W  
 Dry Clean  
 Alte  
 Satisfaction

Monday

Hours—9 a.

Phone VE

Mr. A. F

## RED RIVER CONSTRUCTION CO. LTD.

825 Tache Ave., St. Boniface

MACHINE RENTALS  
SEWER & EXCAVATING

Phone CHapel 7-2511

PHONE Whitehall 3-0751

SERVING ALL OF WESTERN CANADA

## Hanford-Drewitt LTD.

241 PORTAGE AVE.

WINNIPEG

• Clothiers & Importers

• R.C.A.F. Officers' Uniforms & Accessories

# SPORT TALK

with  
**FRANK BINKUS**



## CURLING NEWS

As mentioned in the last issue, two rinks went through the first round of the Regular League without a loss. These two rinks have now been defeated indicating that there are many rinks which are evenly matched. Some of the games have not been decided until the last rock has been thrown. Personnel are invited to come out and watch these games and spend an enjoyable afternoon or evening.

The attention of all skips is drawn to the list of "Spares" which is posted in the Curling Rink. The names listed on this sheet are all paid-up members who are allowed to curl as spares in the Regular or Mixed Leagues. When rinks are short of players, the people on the spare list should be given preference over members of other regular rinks, since this is the only way in which they can obtain a fair share of curling. Skips are therefore requested to contact any of the spares listed when the need arises instead of curling with only three players, or picking up a spare from some other rink.

This week ends the first round of the Inter-Section Curling League with the two top teams in each group as follows:

Group A—AE(W) No. 1	4 wins
MIR	4 wins
Group B—Accts. No. 2	5 wins
Sup. No. 2	4 wins
Group C—111KU No. 2	5 wins
Accts No. 3	5 wins
Group D—AMU	5 wins
Tel. No. 1	4 wins
Accts. No. 1	4 wins
AE(W) No. 2	4 wins

It was noticed on last week's games there were as many defaults in this week as there has been throughout the first round. Sections are requested to make a special effort to participate in these matches according to the schedule. If a rink cannot possibly curl on a given date, the opposing rink should be notified so as not to waste the time of the opposition waiting for a team to show up. Winning rinks are requested not to fill in the board but enter the results on the result slips. The board is the responsibility of the executive and much confusion arises when the proper procedure of recording wins is not carried out.

Five junior rinks participated at

the Thistle rink last Saturday evening. Congratulations to the rinks skipped by Dunc McDougall and Norm Samain. Better luck next time to the rinks of Lovell Lord, Brian Mitchell and Mike Smith.

## MEN'S BASKETBALL

A third straight defeat was the result of the RCAF five's action held here last week in the Winnipeg Men's Senior B Basketball League. The RCMP, who split their two scheduled games, drove to a 54-35 decision over the locals with 25 of their points coming from the skilled hands of Cliff Stark who led all participants for individual high scorer of the contest. Pete Devana, once again for the losers, was their top point getter with 14 points.

In other action, Joe Pura of the Winnipeg City Police garnered 28 points, almost half of his team's total, to spark them to a 57-44 win over the representation from Selkirk. This was the initial victory of the young season for the policemen, and as the result, are now ahead of the RCAF in league standings.

In the third and final encounter of the week, this time between the two top teams, Ray Lamb of St. Andrews hooped 22 points to lead his club to a 48-38 conquest over the RCMP. Cliff Stark, once again topped his mates in scoring, this time with 15 points and in a losing cause.

## Standings up to 5 Dec.

	W	L	Pts.
St. Andrews	4	0	8
RCMP	4	1	8
St. Vital	2	1	4
YMCA	2	2	4
Selkirk	1	3	2
WCPAA	1	4	2
RCAF	0	3	0

## LANGAR WP BOWLING CHAMPS

In the final results of the WP Twentieth Anniversary Wire Bowling Tournament held on Nov. 22 and 23, AFHQ have announced that

the ladies from 30 AMB Langar have emerged as champions of the RCAF in this event. The winning total score rolled was a lusty 3222 which comes to a very respectable 1074 average. Station Summerside placed second with a 2824 final tally.

F/O Ilene Burton of Langar won the high single and high triple individual awards together with the honour of being a member of the winning team for what is referred to generally as a clean sweep. Her high single was a hefty 335 and her triple a very good 774.

The members of the winning five along with F/O Burton were Cpl. Therrin, 709; LAW Kuzmich, 629; LAW Davie, 616; and Cpl. Carmen, 494. The final standings of the Winnipeg entry were not released.

## ANS MIXED BOWLING

Well, Thursday, 30 Nov., again saw a few major changes in the overall picture of this league. Mary Hache took over the Ladies' High Triple with a 703 scratch and raised her High Average to 192. Good bowling Mary! On the other hand, Bill Mazey had an off night and dropped his average to 227. Better watch it Bill, the pack is close behind.

The DEMONS and GRONKS tied for the second quarter with 146 points each and the Committee has decided that both teams will enter the section A bowl-off since a total of six were needed and the two firsts will now eliminate choosing one of the second placers to fill the gap. Congrats to both teams on a good show, 'twas quite close, especially that last point.

Thursday, 7 Dec., was the night for all those turkey lovers. Since this publication will not be avail-

able until after the Turkey-Bowl has been completed, we hope all you winners remember the calorie count over the holiday season and to all the losers—well, there's always next year.

Highlights for Season and Second Quarter:

First place for quarter: DEMONS and GRONKS.

High averages: W. Mazey 227, Mrs. Hache 192.

High triples: W. Mazey 811, Mrs. Hache 703.

Sigh singles: J. Hill 326, Mrs. F. Saunders 279.

High triples—handicap: A. Corazza 824, Mrs. F. Saunders 758.

High singles—handicap: A. Corazza 338, Mrs. F. Saunders 308.

High team average: COMETS 917. Highlights 30 Nov.:

High triples—  
Men: W. Holley 756, R. Pearce 678, E. Beeby 662.

Ladies: Mrs. Hache 703, Mrs. McFadden 619, Mrs. W. Mazey 619, Mrs. F. Saunders 611.

High singles—  
Men: W. Holley 299, E. Beeby 289, S. Kerr 281.

Ladies: Mrs. Hache 274, Mrs. F. Saunders 271, Mrs. McFadden 258.

As a point of interest, this league was approached by the manager of Silver Heights Alleys to enter a team to oppose the City Champs. A quorum was made up of W. Mazey, W. Holley, W. Tunstead, J. Hill and D. Saunders to accept this challenge and the match arranged for Sunday, 3 Dec. Needless to say we got clobbered. This

(Continued on page 7)

## CANADA

asts so far, and I t of another 60 As I say, the wh out of hand."

s, "I have a new this country of though it's taken get just this far haven't become the 'll be prepared for e end of it, I think uly wouldn't have

ngs that stand out he trip so far, Mr long list, including he beauty of the ape Breton Island ed mountains of inland, a broad- e top of the new f Commerce Build, another done in uranium mine at l, back to beauty dness of the new " highway across Superior.

Air Force Inter- luded to begin on ght, December 8 on the program a week, running ening over CKRC

understand that ng over my head." t I know of, sir." true that you have a raise?"

## STATION TAILOR and PRESS SHOP

IN NEW REC CENTRE

Pressing While You Wait  
Dry Cleaning, Laundry,  
Alterations

Satisfaction Guaranteed

Monday to Friday  
Hours—9 a.m. - 6.30 p.m.  
Phone VERNON 2-0864  
Mr. A. Presky, Prop.

## CHAPMAN, CHAPMAN AND CHAPMAN

BARRISTERS, SOLICITORS,  
SPECIAL EXAMINERS,  
NOTARIES, ETC.

GEORGE THOMAS CHAPMAN, Q.C.  
GEORGE E. CHAPMAN, B.Sc., LL.B.  
CECIL A. CHAPMAN, LL.B.

TELEPHONE:

TURNER 8-7973

1864 PORTAGE AVENUE

St. James, Winnipeg 12, Manitoba

## JANSEN BROTHERS

WHOLESALE

FRUITS & VEGETABLES

CATERERS TO R.C.A.F. MESSES

298 Ross Avenue

WINNIPEG, MANITOBA

Whitehall 3-8446

CECIL, THE SECURITY BULLDOG SAYS:

Your most fragile possessions  
are safest with

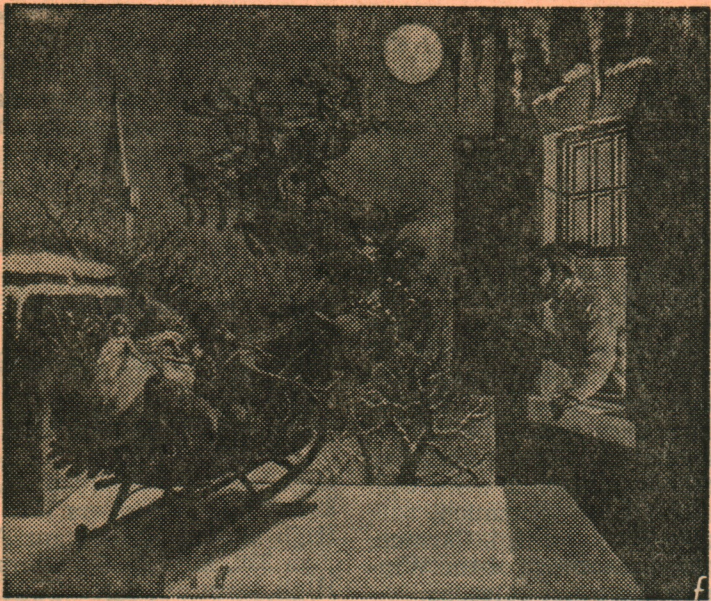


**SECURITY STORAGE**  
Ph. SU 3-7171

WINNIPEG EDMONTON CALGARY

AGENTS FOR  
**ALLIED VAN LINES**





### SANTA WAS BORN IN "THE VILLAGE"

"His cheeks were like roses, his nose like a cherry!" That's Santa . . . the way American children have pictured him ever since Clement C. Moore penned his immortal Christmas poem 139 years ago in New York's Greenwich Village.

It was Christmas Eve, 1822. Professor Moore was returning by sleigh from Washington Market—where he had bought a plump turkey for the family's Christmas dinner.

His horses moved easily over packed snow on the rough country road—where walnut and apple trees bloomed in fair weather. The night was crisp and cold—the air merry with sleigh bells, and holiday greetings called between friends.

"'Twas the night before Christmas, when all through the house not a creature was stirring, not even a mouse." Amusing couplets began taking shape in the learned

churchman's mind. "The stockings were hung by the chimney with care, in hopes that St. Nicholas soon would be there."

By the time Professor Moore reached his home and his six small, bright-eyed children . . . America's completely new version of Santa Claus had been created . . . and was ready for its first delighted audience!

Moore's imaginative description gave Santa skyborne reindeer and a sleigh full of toys . . . dimples, a white beard and a pipe . . . a paunch and a hearty laugh . . . plus a costume of fur "from his head to his foot."

Some say this St. Nicholas was modelled on a rotund, jolly Dutchman who also lived on lower Broadway in those days.

Moore wrote the poem only as a Christmas surprise for his family. It had no name—nor future—until a friend copied the verses and submitted them to a newspaper editor. Just before Christmas 1823, the poem was published . . . under the editor's heading, "An Account

of a Visit from St. Nicholas." No one knew Moore wrote it until a decade went by—and the verses had grown nationally popular!

The poet gave America its modern picture of what Santa should look like, yet Moore himself never referred to St. Nicholas as "Santa Claus," a name known here since the mid-1700's.

The Christmas stockings, chimney, nightcap, shutters, fireplaces, ashes and soot were all part of the American scene in the Village in Moore's time. Preserving its aura of Victorian charm, Greenwich Village today probably has more fireplaces in use than any other section of New York! Santa still finds landing room among the chimney pots spiralling smoke above quaint streets.

Aboard the Village's bright red sightseeing bus this holiday season, visitors will enjoy a free tour of this unique community—where the spirit of Moore's "night before Christmas" lives on! Departing from 42 East 11 Street at frequent intervals all day and evening, the Village bus rolls first to historic Washington Square.

Here, under the fable Arch, a mammoth tree symbolizes the "old world feeling" of the Village. Ceremonies accompanying the lighting of the tree about 10 days before Christmas start the carolling traditional to Washington Square. Last year, choristers charmed sightseers by performing in colorful Dickensian costumes!

Among the carollers who annually gather under the 40-foot tree, you might meet Mrs. Virginia Douglas, of "Yes, Virginia, there is a Santa Claus" fame. A Village resident, she's in her 70's now . . . and still believes in Santa as he was explained to her by a kindly editor so many years ago.

If you hang a wreath and light a candle in your window, wandering band of carollers will pause to sing before your Village home!

The sightseeing bus continues its round, and from your window you might see the house where O. Henry once lived . . . and be reminded of his best-loved Christmas story, "The Gift of the Magi." Were his make-believe Della and Jim inspired by real Village newlyweds of long ago?

Along 8th Street you'll find all the shop windows gaily painted and trimmed by eager school children of the neighborhood.

In this city with its hundreds of churches, the largest creche of all is erected before St. Anthony of Padua's in the Village, on Houston Street between Thompson and Sullivan. Dozens of trees and life-size figures pay silent tribute to the holy night at Bethlehem.

Midnight and candlelight religi-

(Continued on page 8)

### KADET KORNER

By PARKY

### WESTWARD HO THE WAGONS???

Saturday evening, 25 Nov., the Flight Cadets held a combination Hay Ride-Hard Times Dance. The event began with Hot Rum Toddlies in preparation for the cool Hay Ride. Four wagons were provided but as the beaux and belles piled aboard, two of the chariots immediately became immobile with flat tires and a broken axel. In one particular wagon the horses bolted and the driver took off into orbit over the front. It was decided to divide the riders into two groups to overcome the wagon shortage. This worked very well and the evening was underway. The trip consisted of a circuit around the Station football field and through PMQ's. Apparently the horses never heard of altering heading for deviation or drift and at times left the planned route to leave their mark on some unsuspecting resident's front lawn.

The remainder of the evening went very well with dancing by fire-light until one A.M. A fine time was had by all.

### New Course

Course 610A has been officially welcomed by the senior course.

### New Colloquialism

A new expression is spreading around ANS: "You're breaking my heart cadet." For example:

Cadet from 6103: "Gee, we've been scrubbed eleven times and may have to fly through our mid-term leave."

Any other cadet: "You're breaking my heart cadet!"

### Red Feather

A final word on Mess contributions to the Red Feather Campaign. The Flight Cadets' Mess have given the most, \$200.00, which was made with their "Monte Carlo Night" returns.

### STIRLING MOSS AND I

What do I have in common with Stirling Moss, the renowned champion driver? Am I also a famous sports car racing driver? I would like to reply yes, but unfortunately the answer is no. One thing we do have in common is racing driving. Racing for me, however, is a hobby and not an occupation. I do my racing in a vehicle called a "Go-Kart" and am writing this article to attract more people to this new hobby. To do this I will explain what a Kart is, the kind of track it is raced on, the different kinds of Karts in use, and the reasons I enjoy Karting.

The Go-Kart is merely the simplest form of racing vehicle that can be built. If we take a full-bore sports racing car and discard the unessentials, we have a Kart. First we discard the body, which is unnecessary for streamlining or protection because of the slow speeds involved. The next intricate assembly we discard is the suspension. The short (ten minutes or less) duration of Kart races, coupled with the flat race tracks, allows us to dispense with suspension, whose added weight would reduce Kart acceleration. The drive train assembly is the final unessential to be discarded, and includes the rear-end, drive shaft, transmission and in most Karts, the clutch. A chain

(Continued on page 7)

FOR QUALITY PRINTING  
CALL

**Wallingford  
Press Ltd.**

PRINTERS  
AND  
LITHOGRAPHERS

303 Kennedy Street  
WINNIPEG 2, MANITOBA  
Phone Whitehall 2-6488

*Morton H. Nemy*

BARRISTER, SOLICITOR  
AND NOTARY PUBLIC

PORTAGE AND MOUNT ROYAL  
St. James, Man. Tel. VE 2-1381

Zeiss — Leica — Rolleiflex — Exakta — Balda — Graflex — Bolex — Bell and Howell

**STRAINS  
CAMERA STORES**

318 Smith St.      Polo Park Shopping Centre  
Opp. Marlborough Hotel      Phone SUNset 3-6070  
Phone WHitehall 3-6595      459 Portage at the Mall  
Phone WHitehall 2-8428

WINNIPEG, MANITOBA

Western Canada's Largest Camera Store

Budget Terms available to all R.C.A.F. and N.A.T.O. Personnel.

Terms as low as 10% down and one year to pay.

**MAIL ORDERS FILLED PROMPTLY**

**ANS MIXED BOWLING**

(Continued from page 5)

There was no surprise though since their averages ranged from 240 to 271. An excellent show was put on by our chaps and Billy Holley deserves quite an honourable mention for bowling an exceptionally fine single of 365. Congrats Bill! A very sincere thank you is also due the manager of the alleys for supplying the games free of charge and for the cartons of cigarettes he so generously gave the teams for participating.

Just a final note before closing—if possible, please ensure a full turn-out for the last two quarters since our league funds are suffering badly and once again, please start on time! See you next week.

**HOCKEY RINK**

(Continued from page 1)

Two of the reasons. Number 4 Hangar and now 1 Hangar were also considered and had to be discarded as a site as they will be required for other purposes.

This station, in the past twelve months has dropped drastically in establishment. Would it be wise to have to be forced to maintain heavy payments for this renovation on a unit whose strength is decreasing rapidly?

Now we have our rink and five other smaller ones soon to be ready throughout MDPs, Rental Units and PMQs. What is required at present to make this venture a success is the formation of various bantam, peewee, inter-section and other age group hockey leagues within our residential area.

A building will be put up at the site for dressing facilities and storage of maintenance equipment.

The Community Council have purchased much in the way of hockey paraphernalia for the youngsters. They are ready to obtain more if necessary. They also require the backing of fathers and other interested personnel to supervise and coach these teams. Personnel desirous of aiding or organizing teams within their ward or district are requested to do so through their councilman only as it is necessary he be kept in full knowledge of the situation.

**DECAY NOW**

(Continued from page 1)

In the past, many parents used to say, "They're only baby teeth, let them rot." I supposed this statement is even said today. They are so far from the truth that it is pathetic. These baby teeth are most important for the following reasons:

1. Each primary (baby) tooth holds open the space into which a permanent tooth will erupt. The early or premature loss of a baby tooth is responsible for the majority of crowding or crooked permanent teeth.
2. Primary teeth influence the growth and development of the jaws and face.
3. They promote good speech and good appearance.
4. They enable a child to chew his food properly at a time when growth is closely related to the proper digestion of food.

The first permanent teeth to erupt are the six year molars. These teeth are vitally important and should be carefully guarded. They come through the gum usually be-

tween 5½ to 6½ years of age, and appear behind the last primary molars. Unfortunately they are frequently mistaken for baby teeth as they appear so early in life and no primary tooth is lost. Loss of a permanent tooth may be disfiguring but may also cause loss of function and mal-occlusion (teeth do not meet properly). One of the main causes of so-called pyorrhea (periodontal disease) affecting the supporting tissues of the teeth (gums, bone etc.) is the loss of permanent teeth.

Up to this point we have been referring to children's teeth. I might say now that what holds true for children goes for adults also. Dental decay has no respect for age. The process can go on until the last tooth is lost or the last breath is taken.

There is though an appreciable reduction in the rapidity of which tooth decay progresses in individuals over the age of 25 or 30. With this reduction there is also a corresponding increase in the incidence of periodontal disease (diseases of the tooth supporting tissues, gums, bone etc.).

Periodontal disease is present in some degree in almost every individual. The progress of this condition is very slow and at times goes on for years without being detected. This is typified by the experience of an individual who goes for one of his infrequent visits to the dentist and finds out that "the teeth are fine but the gums have to go." It is an awful shock to a person to find out that he has to have all his teeth out because of periodontal disease. The term usually used to loosely describe this condition is pyorrhea. There are various periodontal conditions but most of these can be prevented by proper brushing of the teeth and routine dental checks and cleaning. It is ridiculous to think that regular brushing alone will stop dental problems. Your dentist is the most important preventive dental instrument. His advice and treatment are what does the person the most good if this advice is taken to heart. Even the brushing of the teeth has been studied scientifically and can be the means of saving many teeth, if done properly. If you don't know, ask!

Before we conclude this article I would like to stress one point which I have noticed in the service. A great many individuals do not appreciate the dental work being done for them and often take the attitude that "as long as it is filled it won't decay any further." If this attitude is taken you will find that the dental work you are having done, and not taking care of, is very costly. Don't forget you are a tax payer and you also are the one who loses the tooth if it becomes abscessed. You also have to remember that this service is only provided for you while you are in the armed forces. What happens when you get out and find that through poor oral hygiene more extensive work has to be done? Your problems are just beginning

and then you have to pay for it. The caption "Decay now, pay later" should sum this up.

To those who feel that dentures are the answer before getting out of the service had better read on. Dentures are fine but they are the point of no return. Once the teeth are out you have to put up with dentures, like it or not. Once the teeth have been extracted the dental ridges tend to resorb to their original form that is flat. This process goes on continuously and necessitates repeated adjustments, relines and remakes of dentures. This can be very costly.

Needless to say, you can save yourself thousands of dollars and hours of working time by keeping your mouth dentally fit and clean. You should never go any longer than a year without a dental check.

**STIRLING MOSS AND I**

(Continued from page 6)

and sprocket arrangement substitutes for the train. All that is left of the original sports car is the chassis, wheels, a seat, an engine and a brake—this is a Kart.

Where is a Kart used? The most logical place is at Kart Track. (There is one located about seven miles from Portage and Main). The local Kart Track is a one-third mile long, twenty foot wide course containing eight turns. Compare this track with the famous Watkins Glen sports car racing track with its six turns and two curves in a two mile length, and you'll realize how 'tight' the local track is. Most Kart Tracks are patterned after sports car courses minus banked turns and hills.

This sport originated for family competition, and therefore the class system in effect is very complicated. There is a Junior Division (for drivers under sixteen), a Powder Puff Class (for women) and 'all out' racing classes for men. The smallest class Kart is 'A Bushing', usually comprised of homemade Karts fitted with a 2½ HP lawnmower type engine. The largest class Kart is 'C Super' — these are usually custom-built Karts fitted with large motorcycle or outboard type engines, some of which exceed 35 HP.

The main reason for the popularity of Karting is the relatively low

cost. Don't let anyone tell you Karting is cheap, for considerable expense is entailed to equip a sure winner. When I speak of low cost, I mean that one can race cheaply, but the serious competitor will have to spend more in order to win regularly. In discussing cost I won't even mention the glamorous 'C Class' Karts, because they may cost almost any amount. The next most expensive (and the fastest) class is 'B Super' — Karts for this class easily could cost a thousand dollars. Before I lose all the readers, I hasten to point out that there are few of these 'B' Karts in Canada, and also that this class is no place for the beginner, even if he could afford it. A top Kart for 'A Bushing' class costs about \$150. An 'A Standard' class Kart may cost as little as \$200, but to race with the best in this class will entail an outlay of approx \$350.

Why will anyone pay this much for a Kart? The main reason is the competition. Almost everyone at one time or another has wanted to drive racing cars, and now almost everyone can afford a full-bore racing machine (Kart). Another reason for Karting's popularity is speed. Earlier I stated that the racing speeds are slow, (and they are), but I'm now referring to relative or apparent speed. Anyone who has flown, knows that the higher one flies, the slower one appears to be going. The opposite of this is true, and the driver's sensation while sitting two inches off the ground at 30 MPH is that of nearly 60 MPH in a larger machine.

I could write for hours telling why I like Karting, but the best way for you to learn why Karting is popular is to drive Kart. First, let me warn you the Karting 'bug' is contagious, and some people are 'hooked' after their first ride. However, if you would like to join in some honest-to-goodness fun, why not throw caution to the winds? Why not try Go-Karting? Be another Stirling Moss?



**NO MORE TV REPAIR BILLS!**

**BUY A NEW SET NOW WITH A LOW-COST LIFE-INSURED**

**SCOTIA PLAN LOAN**

**THE BANK OF NOVA SCOTIA**

PORTAGE and GARRY Whitehall 2-8451

**PARK VIEW BARBER SHOP & BEAUTY SALON**

FOR WOMEN

Hair Shaping - Hair Styling  
Tinting - Bleaching - Cold Waving

FOR MEN

All Styles of Haircuts

2177 PORTAGE AVE.

VE 2-1450

**Whytewold**

DRUGS

PORTAGE AT WHYTEWOLD

**YOUR CLOSEST DRUG STORE**

"WE DELIVER"

KEN W. BALL, Prop.

Phone VERNON 2-3997

ember 8, 1961

RNER

KEY

**HO THE S???**

g, 25 Nov., the a combination nes Dance. The Hot Rum Tod- a for the cool gons were pro- eas and belles of the chariots e immobile with en axel. In one e horses bolted k off into orbit was decided to nto two groups- ragon shortage. well and the way. The trip uit around the ld and through the horses nev- g heading for nd at times left to leave their suspecting resi-

of the evening ith dancing by e A.M. A fine l.

urse

been official- senior courses- ualism

n is spreading re breaking my example:

! "Gee, we've ven times and rough our mid-

"You're break-

er

Mess contribu- Feather Cam- dets' Mess have 0.00, which was "Monte Carlo

**SS AND I**

n common with enowned cham- also a famous river? I would t unfortunately ne thing we do racing driving. ever, is a hobby tion. I do my called a "Go- ing this article ple to this new I will explain e kind of track different kinds nd the reasons

s merely the ing vehicle that take a full-bore nd discard the ve a Kart. First y, which is un- nlining or pro- he slow speeds intricate assem- the suspension. inutes or less) races, coupled racks, allows us pension, whose ld reduce Kart drive train as- unessential to cludes the rear- ansmission and clutch. A chain

Continued on page 7

**CLASSIFIED**

All ads of a commercial nature will be 13c per agate line.  
 Ads will not be accepted by phone.  
 Classified ads will be accepted until 1600 hours on Monday of each week for the current issue of VOXAIR.  
 Classified ads of a non-commercial nature will be free to all employees of R.C.A.F. Station Winnipeg.  
 Persons desirous of having their ads appear in more than one issue must resubmit the ad each week they wish it to appear.

**WINTER SPECIALS**

NOW is the time to change over to Firestone Town & Country tires, two for \$44.00. Heavy Duty Firestone Batteries to clear at special discount prices. 1c per gallon discount on gasoline to all station personnel, with station plates on their car. We specialize in European car repairs. European trained mechanic on duty.

**CRESTVIEW TEXACO SERVICE**

Portage Ave. and Whittier St.  
 Kirkfield Park VE 2-2660

**TV SALES AND SERVICE**

For fast radio and TV service, call A.V.A. TV JU 2-5063. Service call, \$2.50.

**TV ANTENNA SUPPLIES**

TV Antenna Supplies and Kits at discount prices. No delivery. Phone JU 2-5063.

**DUTCHMAN'S MARKET & NURSERY**

1/4 mile south of Saskatchewan Ave. on Victoria St. For Sale Selected Christmas Trees from our spruce woodlot. VE 2-5650.

**FOR SALE**

Buying a new Television Set??? Phone The Bank of Nova Scotia, Whitehall 2-8451.

2 Dallas Rd. at Whytefold. For \$16,800, a perfect BUNGALOW HOME for air force family. Three bedrooms all with folding closet doors. Kitchen has cupboards all around, built-in gas range and wall oven with separate broiler, range hood with blower. There is also a built-in dishwasher and garbage disposal unit. Wall to wall carpet in dining-living room. Electric wall heater in 4 pc. bathroom. 3 steel beams support floor (no posts in basement). Thermopane picture windows, aluminum self-storing windows throughout; lots of closet space. Recessed hall lights. New garage. Exclusive listing. Immediate Possession. For appointment to see inside this home, phone Don Brooks — WH 3-0411 days; VE 7-1631 evenings. (Ex-Reg., F/O Prim. Res.)

**ROYAL TRUST COMPANY**

436 Main St. Phone WH 3-0411  
 Member W.R.E.B. M.L.S.

House, Kirkfield Park, 3 bedrooms, full basement, concrete driveway, landscaped, \$15,500. N.H.A. 6% mortgage. Phone VE 7-1804.

1 man's bicycle, 28" wheels, \$10.00; 1 pair girl's white skates, size 11, \$2.00; Matched Set, coffee and step table, walnut, \$10.00; 1 car top carrier, \$5.00. Phone VE 7-1101.

1 Lloyd aluminum baby carriage converts to stroller, \$40.00; 1 large crib and spring filled mattress, \$30.00; 1 Lloyd aluminum stroller, \$12.00; 1 small crib, \$3.00; 1 car bed, \$3.00; 1 car seat, \$1.00; 1 baby tenda, \$12.00; 1 electric sterilizer and bottles, \$6.00. Excellent condition as these were used for only one child. 53 Silverwood Bay, VE 2-5914.

1 pair girl's white figure skates, new, size 13 1/2. Original price \$15.95, will sell for \$10.00. 1 large size crib with spring filled mattress, \$10.00. Would like to buy a good Rollaway bed. Please phone VE 2-5859.

**FOR SALE**

1 large crib — no mattress; 1 small crib with mattress; 1 car bed; 1 rocking-horse with chair type seat suitable for baby. Phone VE 2-2320.

One set of Stainless Steel Waterless Cookware, never used. What offers? Phone VE 2-2930.

1 Scout Hat — size 6 3/4; 1 Pair Boy's Skates, size 11. Reasonable. Call VE 2-2339.

**FOR SALE OR EXCHANGE**

For Sale—Boy's skates, size 1, \$2.50; girl's white skates, size 2, \$2.50.  
 Wanted—Girl's skates, size 12 or 13 and girl's figure skates size 13 or 1. Phone VE 2-5345.

**BABY SITTERS**

Mature woman will baby sit at your house 50c an hour. Phone VE 2-5324.

**WANTED**

One pair boy's skates, size 12 or 1, phone VE 2-5263.

Ride from the vicinity of Portage and Arlington to Station. Phone Marie De Vita, SP 4-9538 or VE 2-1311, Local 454.

**FOR RENT**

Main floor, 4-room suite, stove and frig. Young St. \$75.00 per month. Free use of washer and dryer in basement. Phone LE 3-5086.

**SUBLET**

Completely furnished 2 bedroom apt. — parking and utilities. Jan. 4 to April 30. Silver Heights Apts. — Very close to Station Winnipeg. Phone F/L Pane, Local 365 or VE 2-0069.

**SANTA WAS BORN**

(Continued from page 6)

ous services are held throughout the community, in some of New York's oldest churches. St. Mark's in the Bowery presents hymns of nations . . . imparting a world-brotherhood air to festivities.

International and bohemian in flavor, tiny shops tucked away in the Village's winding lanes display gifts and remembrances from every country where Christmas is loved and celebrated.

Peering into the wintry dark, you can see a tall, bright cross silhouetted among Manhattan's towers. At New York University, cultural landmark of the Village, the cross is formed by lighted windows. All lights in the main building are turned off, except those giving shape to the symbolic cross.

As in small towns across America, lamp posts on residential treets here are hung with fragrant wreaths. Community awards have been won for the most beautifully decorated private homes. Not to be outdone, streets and avenues dotted with shops like a plum pudding is dotted with raisins, don lights and garlands for holiday finery.

A quiet and gay little world preserved from another era . . . Greenwich Village, more enchanting than ever at Christmas time. Does any place in America have more right to take the season to its heart? Santa Claus, that "right jolly old elf," was born here . . . and childhood's Christmas lore will never forget it.

**FLYING WING ECHOES**

With the advent of winter, Saturday details have reappeared much to the disgust of the football fans. We understand that arrangement have been made to preserve the sanctity of Grey Cup Day.

Since the last report, many changes have occurred in Flying Wing. On the tenth of November, the traditional Mug Party was held for the following officers: F/L Bill McKenzie, F/O Perry MacKinnon, F/O Don Wilson, F/O Rick Wiley and F/O Bob Milley, all of whom are destined for Maritime Command; F/O Vic Ruppell is off to the C119 element of the Transportation OTU; and finally F/O Phil Stuart, who is being separated from the service (and possibly his appendix, too).

A future transferee is F/L Gar Ash, who departs for CFS (Saskatoon) in January. Other Flying Wing losses include F/O Cec Kipper (to Station Test Flight) and F/O Howie Thomson, who has been elevated to the exalted status of Station PRO.

The recurring 'shuffle' of pilots within the organization is taking place. F/L Bob Rumble of ACC has changed places with F/L Al Morton of Dakota Sqdn. F/L Bill Holley has managed to slip the clutches of ACC for a more amenable flying job (in Standards, so rumour goes). F/L Ramsey Brown will need some company in Standard Flight when he returns from the UICP course in Saskatoon in December.

A welcome addition is F/L Leo Salminen, returned to the fold for a three year stint. Other new faces soon will appear, according to our Adjt, F/O Roger Smith — fourteen pilots are due in before Christmas, and more in the New Year.

Current absentees are F/O Norm Lee and F/O Wayne Siegner, presently attending the Dakota course at the Transport OTU—hurry back, fellas, Harry and Dusty have big plans for you.

I have opened an office at the corner of Portage and Whytefold along with B. L. Mason & Co. Phone or drop in and former Air Force personnel will be pleased to provide, without obligation, expert assistance with any of your insurance questions. Free parking facilities.

**THE MARITIME LIFE ASSURANCE COMPANY**

J. L. BERYEN (W/C retired)  
 District Manager

Corner Portage and Whytefold  
 Office VE 7-1331 Res. GL 3-0644

That's about all for this issue—we'll report again before the holiday season.

**CNS STAFF COURSES GRADUATE**

Today (Friday), 29 members of CNS staff courses graduated after 15 weeks of intensive study, examinations and project work. For some it means on to instructional work at ANS, and for others operational training units and squadrons. All graduates are now qualified for instructional positions and junior air staff officer appointments in their aircrew specialties.

Of the 29 graduates, 4 Radio Officers and 1 Navigator are joining to ANS for instructional duties. They are F/L Grbac (Nav), F/L McCormick (RO), F/L Brooks (RO), F/O Martell (RO), and F/O Teteranko (RO).

F/L Timmins, honour graduate of the SONI Course, was Executive Assistant to AOC of Training Command prior to attending the course. F/L Timmins will now proceed via the Transport OTU to 437 Squadron and operational flying on the "Yukon", the RCAF's new Turbo prop transport just entering service.

Winnipeg's Finest 2-Way  
 Radio Equipped Taxi Service

**VETERAN'S-NASH TAXI**

PHONES

Whitehall 2-6101

Whitehall 3-4533

Clean, Modern Cars to Serve  
 You Anytime, Anywhere



**Town n' Country RESTAURANT**

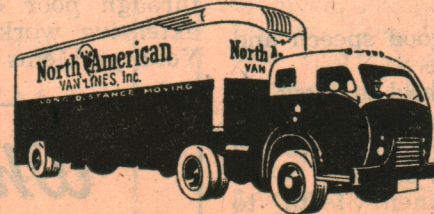
**FABULOUS FUN • FOOD • FESTIVITIES**  
 THE AIRMEN'S FAVORITE RENDEZVOUS  
**THE TOWERS**  
 Winnipeg's Most Exciting Supper Club  
**GOLD COACH LOUNGE**  
 For a Rollicking Evening of Casual Entertainment  
**THE CARRIAGE ROOM**  
 Famous for its Open Charcoal Broiler  
**THE STEAK ROOM**  
 For an Adventure in Good Eating  
**YE NOSHERY**  
 For After Theatre Drop-in  
 317 KENNEDY ST. • WINNIPEG  
 Phone WH 3-8618

"FOR A REAL GOOD MOVE"

CALL

**BEAVER MOVING & STORAGE**

FIRE-PROOF STORAGE



EXPERT CHINA PACKING

Phone  
 SUNset 3-5412  
 960 Logan Avenue

Authorized Agents:  
 NORTH AMERICAN VAN LINES  
 Nation-Wide Moving

VOLUME 10, No 49

**PLAY IT SAFE**

Anxious little fingers as eyes glow in Santa's bounty! This toy has been a child's wish and hope . . . nothing can . . .

Here are ways a "play it safe" this For a child up remember whatever will eventually find mouth. Be sure smooth edges, hard appropriate weight parts that can be off and swallowed

Avoid toys which and leave jagged, toys with moving catch small explosion recommended: dolls and animal colored building push and pull toy

Between the youngsters are re do things . . . do for the girls, dunterlocking trains.

Statistics point injuries always Christmas holiday.

What can pare their children's e

Records show endangered than and missile-throw be kept from the children are pla shots, air rifles, ( B.B. guns . . . sm should be kept a

Parents might tional make-beli selecting houseke

games, miniature that utilize forms that fit together oportunities for y their eyes. Such t and help your ch use his eyes for r face later in life

If your child pointed toys suc driver, see that l them.

Bow-and-arrow are slightly safer tips . . . but m

**Bidinosti & Corona**

**CUSTOM TAILORS**

SPECIALISTS IN RCAF OFFICERS' UNIFORMS AND ACCESSORIES

256 Kennedy St.

Whitehall 2-4685