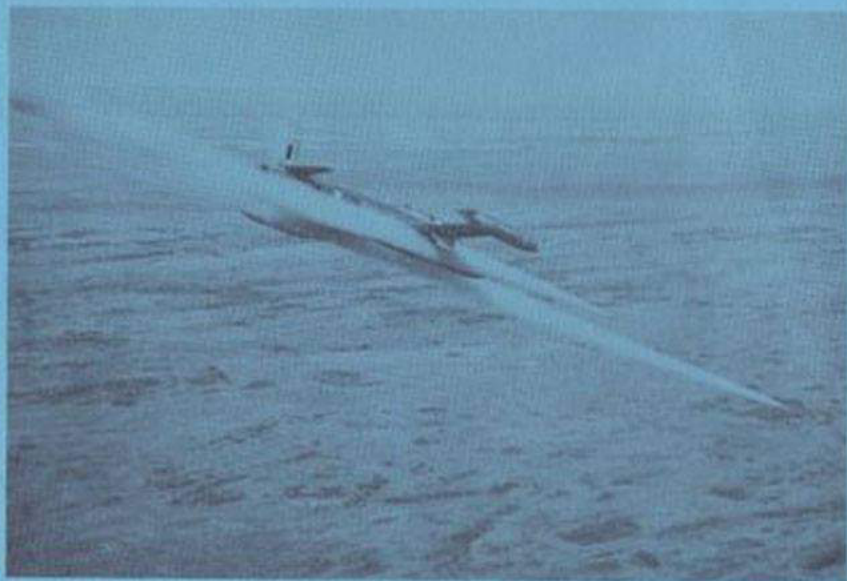




WELCOME

TO RCAF STATION

MacDonald



WELCOME TO R.C.A.F. STATION MACDONALD



Getting acquainted with a new station is not always an easy task for recent arrivals. Our guide booklet, we hope, will furnish you with answers to the many questions you are about to ask concerning MacDonal and its role.

In this booklet you will also find information in regard to shopping and recreational facilities in the surrounding area.

We look with pride on the pleasant relations we have had with the citizens of this district during the past years of MacDonal's existence, and we ask, since you are now one of us, that you strive constantly to maintain and strengthen this relationship.

Again we say, welcome to MacDonal, and let this book be your guide.



FOREWORD

Acquainting you with the various facilities and operations of Station MacDonald is the aim of this Guide Book. It includes a map of the Station, a map of the surrounding area and information about shopping and recreational facilities in this vicinity.

This book is not intended to provide an exact set of instructions covering every phase of station life, but rather to guide you to the various buildings and sections where you can obtain the latest information on your own individual problems.

If you need additional instructions or advice, don't hesitate to ask those of us who have been at MacDonald for some time. We are proud of our Station and are ready to assist and guide you in every way possible.

HISTORY

RCAF Station MacDonald was established in 1941 and officially opened on the 10th of March of that year. It is situated approximately 17 miles north-west of Portage la Prairie off Manitoba Highway No. 4.

During World War II, MacDonald was utilized as a Bombing and Gunnery School of the British Commonwealth Air Training Plan and trained air gunners, wireless operator-air gunners and air observers for the Air Forces of the United Kingdom, Australia, New Zealand and Norway. In this capacity, the School graduated more than 6,000 students of whom approximately 5,000 were Canadians. One of the Canadian students, Pilot Officer A.C. Mynarski, who graduated in December 1942, won the Victoria Cross "by a most conspicuous act of heroism which called for valour of the highest order" at the cost of his own life.

By the fall of 1944 an adequate reserve of trained aircrew was on hand and classes were gradually reduced in number and size. In February 1945, the last student received his wings after completing training and the School and Station were closed.

In the spring of 1951 MacDonald was reactivated, and since has served as both a Pilot Weapons School and an Advanced Flying School. At the outset Harvard aircraft were used in this training. In the fall of 1952 the Advanced Flying stage was phased out at MacDonald and the unit carried on as a PWS. In the spring of 1954 T-33 Silver Stars replaced the Harvard as the training aircraft. In the spring of 1956, Station MacDonald again took on the dual role. Advanced Flying training was commenced in conjunction with PWS training and in July 1956, the PWS was discontinued and the Station was designated as an Advanced Flying School.

THE ROLE OF RCAF STATION MACDONALD

RCAF Station MacDonald is now utilized as an Advanced Flying School. At this unit, abinitio trainees from the Flying Training Schools are given their first jet flying training. In addition to this group, other trained pilots who have, up to this point, had no jet training, are given the same course of instruction as the FTS trainees. Duration of the AFS course is 16 weeks.

After arrival at this unit, the students spend their first four weeks in the Ground School. They study technical and handling aspects of the Silver Star Jet Trainer, High Level Navigation, Aviation Medicine as it applies to a jet pilot, Safety Equipment, Flight Procedures and Radio Theory, some theory of High Speed Aerodynamics and Meteorology.

The next four weeks are spent alternating half days flying and half days in Ground School. Final Ground exams are written in the eighth week of training.

The flying programme is designed to give the students instruction and practice in all phases of jet flying including aerobatics, high and low level navigation, instrument flying, night flying and formation flying. Safety of operation is a prime consideration. A total of approximately eighty-five hours and thirty minutes flying time is given to each student in the Silver Star.

On completion of training at AFS MacDonald, RCAF trainees are posted to Operational Training Units or Flying Instructors' School, and NATO trainees are repatriated.

The AFS staff extend their greetings and a hearty welcome and trust that your stay here will be both pleasant and productive.

PERSONNEL REPORTING RCAF STN MACDONALD



All personnel reporting to RCAF Station MacDonald are required to report to the Station Orderly Room (Airmen) and Station Adjutant (Officers). You will be given a short reporting in form which briefly familiarizes you with the location of various sections on the Station and also permits you to meet some of the section commanders with whom you will be dealing during your stay at MacDonald.

Airmen reporting after normal duty hours will report to the Orderly Sgt who will ensure that you are assigned a bed and given the necessary bedding—this bedding is obtainable from the Air Force Police at the Guard House. Officers will report to the Orderly Officer who will see that you are assigned quarters. All personnel must report as soon as possible after 0800 hours of the first normal working day.

AUTOMOBILES

If you are reporting to RCAF Station MacDonald for any period of duty, you may, on application to the Air Force Police, obtain a pass for your private vehicle. When applying, you must be able to produce your registration certificate, driver's license, and documentary proof of current Public Liability and Property Damage Insurance.

WEBBS BUS SERVICE

An up-to-date schedule of bus service between the station and Portage la Prairie is posted in the Guard House.

STATION ORDERLY ROOM

The Station Orderly Room is located in Building #2 and is comprised of the following sub-sections: Central Registry; Movements and Claims; Records. Your Station Orderly Room is here to provide a service and to assist you with your problems. To enable Orderly Room staff personnel to accomplish as much work as possible and at the same time provide this service, the Station Orderly Room is "OUT OF BOUNDS" daily from 1300-1600 hours and your co-operation in confining your queries to other than these times will be appreciated. Your queries via telephone are welcome at any time and will be answered by calling the following locals: Central Registry - 39; Movements and Claims - 91; Records - 81; NCO i/c - 38.

TRANSPORTATION

Transportation to and from RCAF Station MacDonald and Portage la Prairie is provided by the Webb Bus Lines. Consult your local timetable re departure and arrival times. Eastbound CNR and CPR trains depart Portage la Prairie daily in the early evening -- Westbound trains depart daily at noon -- for exact times it is suggested that the local railway agents be contacted.

STATION SUPPLY SECTION

The Station Supply Section is located at the east end of the unit and is easily identified by its brown brick construction. Queries may be directed to Local 63 at any time.

STATION HOSPITAL

This unit is provided with a 15 bed MIR Hospital. Sick parade hours are published in DROs.

The medical staff will look at any emergencies which occur in the PMQ area, and will provide other assistance wherever possible.

A general public health program is carried out at the MacDonald Plains School and on the first Thursday of each month a well baby clinic is held in the kindergarten room.

DENTAL SERVICE

A Canadian Army Dental Clinic is established in the Hospital building and looks after all normal dental work for servicemen.

MESSES

Regulations pertaining to dress, etc, in the Officers' and Senior NCOs' Messes are posted on the Notice Board of the respective messes.

Officers**Meal Hours**

	Breakfast	Lunch	Dinner
Mon - Fri	0615-0800	1130-1300	1730-1900
Sat, Sun and Holidays	Brunch	0700-1300	1730-1900
Other Ranks			
Mon - Fri	0615-0745	1130-1300	1615-1800
Sat, Sun and Holidays	Brunch	0700-1300	1630-1730

ACCOUNTING FACILITIES

Normal accounting facilities are established and are conveniently situated in the west wing of the Administration Building.

The accounting services are open at the following times:

Supply Accounts	--	Daily 0900 to 1700 hrs
NPF Accounts	--	Daily 0800 to 1700 hrs
Pay Accounts	--	
Queries, Assignments, etc		0900 to 0930 hrs and 1300 to 1330 hrs
Casual Pay, Claims Advances		Mon, Wed, and Fri 1300 to 1400 hrs

Notwithstanding the foregoing, should you find yourself in a real emergency where you cannot conform to the hours above and require money immediately, we will make every effort to accommodate you regardless of time or day.



CANTEENS

Wet Canteen: Situated in Building No. 17.

Mon - Fri	Saturday	Sun + Holidays
1700-2200	1200-1630 1800-2359	1230-1500 1700-2200

Dry Canteen: Situated in the Rec Hall, east side.

Mon - Fri	Saturday	Sun + Holidays
0945-1100 1200-1300 1430-1530 1900-2230	1030-1200 1900-2230	1900-2230

Snack Bar: East side of Rec Hall.

Mon-Fri	Saturday	Sun + Holidays
0930-1300 1400-2300	1030-1700 1900-2300	1300-1700 1900-2300

BARBER SHOP

The Barber Shop is located in the Station Recreation Centre.

HOURS: 0800 - 1800 daily except Saturday and Sunday
Service by appointment.

DRY CLEANING AND LAUNDRY

Perths: Building No 26 opposite Auto Club
Office 1130 - 1300 Mon Wed, Fri.

Danns: Just to the rear of the Auto Club Compound.

1700-1830 Mon, Wed, Fri.
Service: Pick-up and return approximately every two days

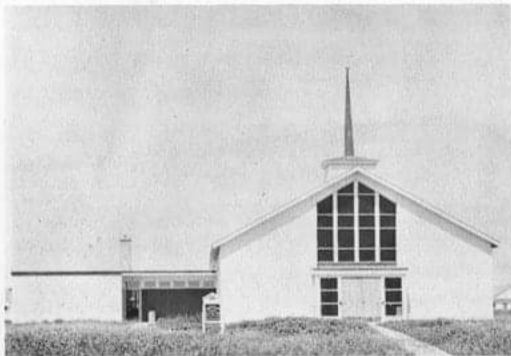
MAIL

Mail will be distributed as follows:

Officers	-	Officers' Mess.
Senior NCOs	-	Senior NCOs' Mess.
Other Ranks	-	Mail Wickets at Post Office are open from 0900-1800.

Postal Money Orders are available.
Savings Bank facilities are available.

RELIGIOUS SERVICES



Protestant

Hours of Worship:

Divine Worship each Sunday morning at 1100 hrs.

Holy Communion first Sunday in each month.

Baptisms made by arrangement with the Chaplain.

Sunday School, beginning the first Sunday in October, will be held each Sunday morning at 0945 hours in the Chapel.

Roman Catholic

Masses:

Sunday Masses: 1st Mass - 0900 hrs
2nd Mass - 1100 hrs

Daily Masses: Mon to Fri - 1715 hrs
Sat - 0830 hrs

Women's Chapel Guilds are established at both Chapels. For further details contact the individual padres during office hours.

PMQ AREA

The PMQ area is situated immediately south of the Station and consists of 190 units. These units are of Steelex construction with two and three bedroom units making up each building. Also provided in conjunction with the PMQ area is a dead storage building in which excess furniture may be stored.

The school is situated in the PMQ area and provides educational facilities up to High School. In conjunction with the school, a kindergarten for 5-year olds is also provided.

The social and cultural activities of the PMQ area are governed by an elected PMQ council. The PMQ area is divided into four wards and two councillors for each ward are elected once a year. A mayor is also elected for the whole area.

A Women's Auxiliary has been active on this unit for some years. Through a sponsoring committee they have helped form the Scouts, Cubs and Guides Groups.

An up-to-date supermarket situated within the PMQ area provides all the modern facilities for household needs. Prices and services are competitive with city stores and your patronage is welcomed.



RECREATION



The hub of after-hours activity is the Recreation Center located in the Drill Hall. Within the walls of this building are located Sports Stores, Snack Bar, Dry Canteen and the facilities for bowling, badminton, table tennis, basketball, volleyball and weight lifting. The building is open for use every day in the week from 0800 hrs to 2300 hrs.

SUMMER ACTIVITIES

Softball, fastball, baseball, archery, cricket, soccer, football, skeet and rifle shooting, track and field.

WINTER ACTIVITIES

Badminton, basketball, bowling, curling, hockey, gymnastics, weight lifting, table tennis and volleyball.

CLUBS TO JOIN

Rod and Gun, Hobby (woodworking, leathercraft, photography), Music Appreciation, Record, Bugle Band, Golf and Drama.

The Recreation Staff are located in the Recreation Center and are anxious to help you get started in any activity available. The telephone local is 60.

The Hobby Club is located in the West Wing of Barrack Block #9. The club operates every evening from 1800 to 2200 hours and on Saturday and Sunday during the afternoons. Woodworking machinery and tools are available to all members. Also included in the shop are leathercraft and model aircraft classes.

The Auto Club is situated across from the Guard House and provides members with all services required for servicing automobiles. This club is open every evening and all day Saturday.

SPORTS STORES

During the indoor season the Sports Store is open for issue from 0800 to 2200 hrs except for Saturdays and Sundays when the issue hours are from 1400 to 2130 hrs. In the summer months, issue hour is 1600 to 1700 hrs and returns are made 0800 to 0900 hrs.

Equipment loaned from the Sports Store on a loan slip is for a 24-hr maximum period, unless it is borrowed over a week-end. Equipment to be borrowed for a longer period must be signed for on a loan card.



THEATRE

The Silver Star Theatre is situated on the north-west corner of the Station in Building No. 51. Shows start at 1900 hrs Monday to Saturday and at 1800 hrs and 2030 hrs on Sunday. Picture changes every night.

LIBRARY

The Station Library is located in the West Wing of the Education Building.

Monday - Friday

Sunday

0800 - 1200 hrs

1400 - 1600 hrs

1215 - 1700 hrs

1800 - 2100 hrs



THE LOCAL AREA - PORTAGE LA PRAIRIE

The City of Portage la Prairie is situated 16 miles to the south-east of MacDonal. With a population of over 8,000, Portage offers modern shopping facilities, main-line rail and bus connections, recreation in the form of theatres, bowling alleys, playgrounds, a swimming pool and golf course.

To the east of Portage la Prairie (some 58 miles) Winnipeg, the provincial capital, provides the bright lights for Manitoba. Winnipeg is noted for its beautiful parks and is the home of the famous Winnipeg Blue Bombers Football Club.

To the west of Portage la Prairie, a favourite picnic area of all MacDonal residents is the private park at Westbourne. Swimming, boating and playground facilities are available in the summer with tobogganing in the winter.

Riding Mountain National Park is situated approximately 100 miles to the north-west of MacDonal and is the summer playground of Manitoba.

