



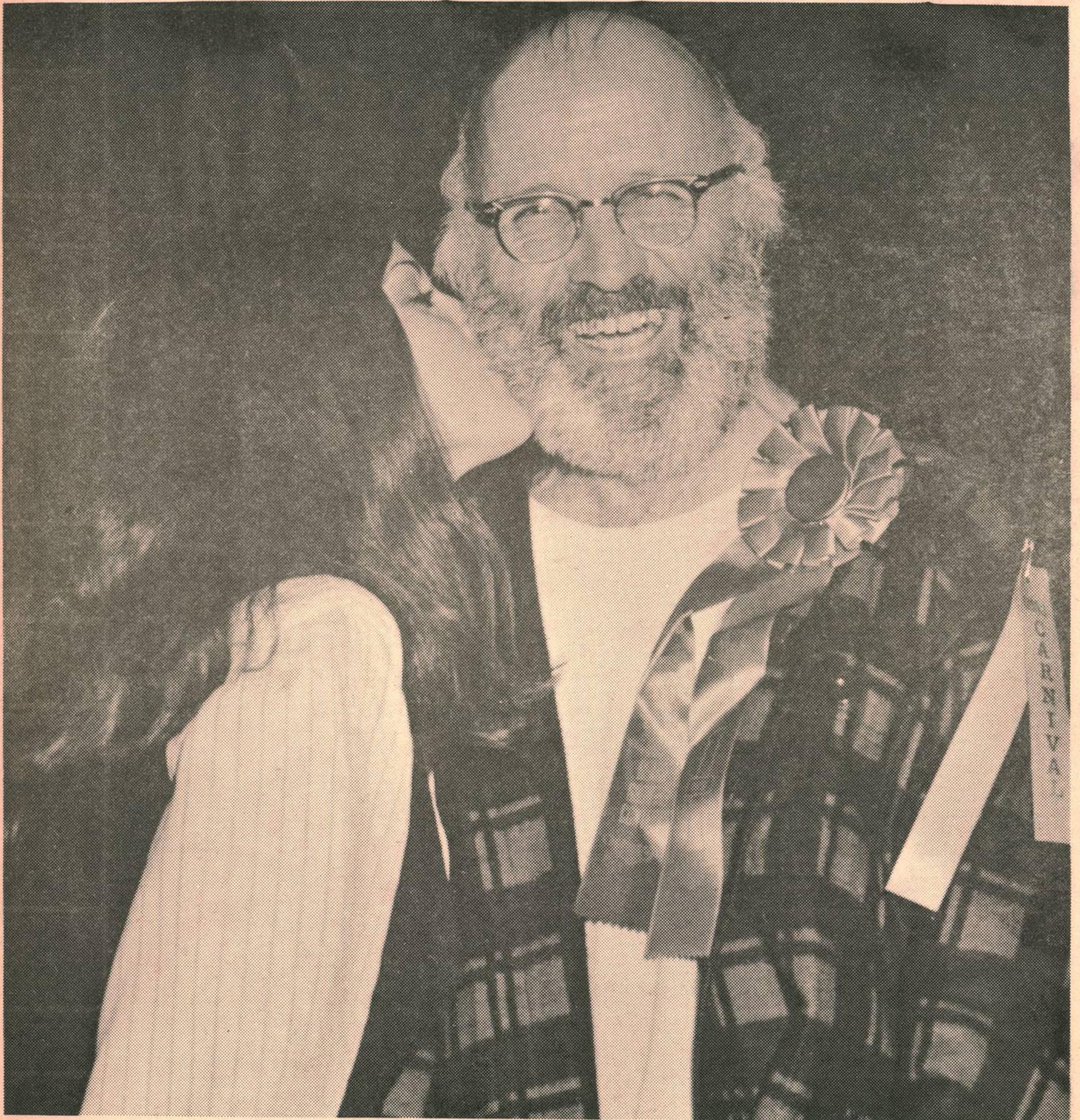
Framfari *any*



VOLUME II Number 10

C.F.B. GIMLI, ASPEN PARK, MANITOBA

FRIDAY MARCH 12, 1971



Blow in my ear and I'll dream about following you anywhere! (C.F. Photo)

SOUND OFF

Dear Sir:

In regards to the publication of the new rental rates for PMQ's and BLHU's that was in last weeks Framfari I would like to make a few comments.

Just a quick percentage wise increase is as follows:

Basement Apartments - one bedroom - 5%; two-bedroom 3%; three-bedroom - 2%.

Main and Upper Floor - two-bedroom - no increase; three-bedroom 1%.

Townhouses - Corporals and Privates - 11%; Senior Non-Commissioned Officers - 7%; Officers - 3%.

According to the last treasury board observation, as published in routine orders, it was noted that the senior ranks were slower in progression to reach their maximum charges for PMQ's and BLHU's. It now seems that Gimli is adding to this by putting the private and corporal's rate for a three-bedroom townhouse at \$1.00 below his maximum charge while captains are \$26 and majors are \$36 below their maximum charges. I have read and re-read CFAO's and QR&O's regarding PMQ and BLHU rates and I can't find anyplace where all ranks are charged the same amount as per latest list. This is not my real complaint but it would be interesting to find out the authority for such a policy as we now have.

My real complaint is why the PMQ rates remain the same while the Evergreen Apartment rates are increased up to 11%. If the rental assessments of an area are increased all housing units administered by the base should go up accordingly.

Also as the base is closing and many apartments are empty now and by September they should be completely vacant why bother at this

time to demand an increase in rent when many of the facilities around the base are being phased out and the people who are remaining will have many other expenses while in the process of closing out the base. I would appreciate some remarks from the administration people in this regard.

Tom Wadey

REPLY

Charges for Married Quarters and Bulk Lease Housing Units are governed by Appendix XXVII to QR&O Vol. 3 "Charges for Married Quarters Regulations". Paragraph 2(c) of these regulations states:

Charge Means,

- (i) for a married quarter in Canada the weighted national average of the appraised monthly market rental plus the national average monthly value services,
- (ii) for a Bulk Lease Housing Unit,
 - (A) the weighted national average of the appraised monthly market rental, or
 - (B) the weighted national average of the appraised monthly market rental, together with the value of services included in the rate charged.

As can be seen from the above, rental rates are based solely on the type of accommodation occupied; the rank of the occupant has no bearing on the established charge. The established charges for married quarters and bulk lease housing units are listed in CFAO 208-1 Annex A, Appendix 1 and vary from \$70.00 per month to \$406.00 per month. These rates are established by Central Mortgage and Housing Corp. as being the "appraised monthly market rental plus the national average monthly value of servi-

ces" for the fiscal years 1970 and 1971, for the various types of married quarters available in Canada.

The rates actually charged were to be increased gradually over a number of years by an amount not to exceed \$15.00 per month until either,

- (i) the established charge, or
- (ii) the maximum monthly charges by rank contained in CFAO 208-1, Annex A, para. 5 or
- (iii) the charge reach 25% of the members monthly pay, whichever is least.

This policy has now been changed by the message referred to in your letter, whereby the limit of \$15.00 per month for all ranks for annual increases has been changed to a varying rate of \$15.00 to \$35.00 depending on rank. All personnel at this base will reach their maximum charge on 1 April 1971. Personnel living in PMQ's reached this maximum last year as did those living in two bedroom units in the Evergreen Housing Development. For this reason these latter will not have their rent increased this year.

To answer your specific questions while no order can be found which specifically states all ranks will be charged the same amount for the same accommodation, this principle is implied in the definition of "charge" quoted above. That is, charges for married quarters are now based on the type of accommodation occupied not by the rank held by the occupant.

The reason some rates in the Evergreen Housing Development increased while others, both there and in PMQ's did not, is that as at 1 April 1970 all PMQ's and some Evergreen units had reached the maximum permissible rental rates whereas other units had the maximum rate raised by more than \$15.00 in April 1970 and therefore had to be raised in two stages.

The fact that the base is closing has no bearing on the rental rates for BLHU's or PMQ's. These are fixed by CFAOs according to the method outlined above. The base has no control over these rates, even if these rates were unrealistically high in comparison to local civilian housing, bases currently can do nothing to reduce them.

Please see CFP release on page 19
For further info to
to this story.

FRAMFARI is published weekly for distribution on Friday. Opinions expressed are those of the writers and do not necessarily reflect official Canadian Forces policy. The Editor reserves the right to edit all copy and advertising to suit paper policy. All correspondence should be addressed to:

Editor, Framfari
Aspen Park, Manitoba
Phone: 642-5151 - Local 126r2

Deadline for all copy: 2:00 p.m. Monday

PUBLISHER

..... Col. J.F. Dunlop,
Base Commander

BUS. & PROD. MGR.

..... Maj. A.C. Platz - Loc. 57

EDITOR

..... J.F. Bennett - Loc. 154

SPORTS EDITOR

..... B. Ker - Loc. 52 or R. Malcolm - Loc. 30

WOMEN'S EDITOR

..... Mrs. Betty Bennett - 642-7964

ADVERTISING MANAGER

..... J.G. Parkinson - Loc. 116
or 642-7419

SOUND OFF

Dear Sir:

Hate to be a 'sour-puss' but according to the Framfari's revised Carnival schedule of the 19 of February 1971 the smooch races etc. were listed for Sunday not Saturday as you pointed out the following week. Quite a few people turned out on Sunday at 3:00 p.m., some even hanging about hopefully on the ice until four. We did get our quota of fresh air and mighty nice it was too. It was like man, a day late, but boo-boos occur in the most carefully organized things.

A Frustrated Smoosher.

Dear Sir:

In reply to your remark that it was unfortunate that the smooch and snowshoe races were not supported.

Well, for one thing they were on Sunday not Saturday, or so I was told by a participant.

I was at the wharf from 2:00 p.m. till 4:30 p.m. and I saw lots of people arrive and leave during that time but where were the organizers.

By 4:30 p.m. when I left, cold and disappointed, there were still no organizers or equipment around and I think a lot of people had the same idea as I had, that of getting home to a nice cup of hot coffee.

Several snow mobilers were giving rides to children to keep them amused. Thanks fellas.

Please check your facts Sir as you were not there and I was.

Thank You.

A Frozen Spectator.

WHOA GUYS.....First off, we're glad somebody reads the editorial and thanks for the replies. Secondly, the reference to the races occurring on Saturday was a typographical error that we meant to correct before publication but it slipped by. Thirdly, the editor was in Quebec city that weekend so he relied on a most reliable news source for the events, who was there Sunday, his wife. Forthly we agree there were some people out but no organizers.

'NUF SAID.....

FINLEY TV

TV - RADIO - HI-FI

SALES & SERVICE

ANTENNA INSTALLATIONS

26 6th Av

642-5386

Dear Sir:

I wish the person who scraped and dented the rear right fender of my car while it was parked outside the recreation centre at the base on Sunday March 7, between the hours of 7:30 p.m. and 10:30 p.m. had at least had the courage to report the damage. There is no way that you could possibly have done that damage and not been aware of it.

D. Wright

THANK YOU

I would like to extend my sincere gratitude to the Gimli Kinsmen Club, the judges of the Carnival Queen Contest, and to the donors of the gifts. I found the Winter Carnival to be a very memorable experience.

Sincerely,
Joanne Walld



C.F.B. GIMLI.....Sergeant Harry D. Truax, 50, of Leamington, Ontario recently retired at Canadian Forces Base Gimli, Manitoba.

Sgt. Truax was born and educated in Leamington and at the age of 20 he enlisted in the Royal Canadian Air Force. He was selected for training as an airframe technician and attended the basic trade school at St. Thomas, Ontario between May and October 1941.

In November 1941, Sgt. Truax found himself on his way to England where he was attached to No. 6 Group, Bomber Command, Royal Air Force. From then until December 1944 he worked on Hampden, Halifax, and Lancaster bomber aircraft.

Early in 1945, Sgt. Truax returned to Canada only to be released due to military cut-backs.

In October 1947, Sgt. Truax felt the urge to serve and re-enlisted at Trenton, Ontario where he served until January 1951. During this tour he was promoted to corporal.

From January 1951 to August 1953 he was stationed at Gimli, Manitoba. In April 1953 he was promoted to sergeant.

Following this tour, Sgt. Truax spent one year in Grostonquin, France at No. 2 Fighter Wing. He returned to Canada in October 1954 and was based at Uplands. For the next ten years he worked at 412 Transport Squadron, Central Experimental and Proving Establishment, and at 410 All Weather Fighter Squadron.

In the fall of 1964 he moved from Ottawa to Camp Borden, Ontario. From then until August 1967 he was an instructor/supervisor at the Aircraft Trades School at Borden.

From August 1967 until the present, Sgt. Truax has been based at C.F.B. Gimli where he has been working in a supervisory capacity in the aircraft maintenance and repair complex.

Sgt. Truax, his wife Joan and their two sons, Jim and Glen have tentative plans to move to the Ottawa area.

Sgt. Truax has been a faithful servant for 28 years, and all friends and acquaintances wish him well in his new endeavors.

(C.F. Photo)



Viking Motor Hotel LTD

PHONE 642-5181

P.O. BOX 131

- 21 Units -
- Air Conditioned -
- Cocktail Lounge -
- Sauna Baths -
- Dining Room -
- Banquet Facilities -
- Beverage Room -

Exotic Dancer Monday & Tuesday
Smorgasbord Sun
BAND Wed, Thr, Fri, & Sat.

Party Ice For Sale

Cor. Hwy.
No. 9 and
Centre St.

Phone for
reservations

GIMLI
Manitoba
Canada



MAINTENANCE AWARD CITATION

C.F.B. GIMLI.....Corporal Mel T. Mills, of Edmonton, a Safety Systems technician at C.F.B. Gimli, was recently recognized for his professional workmanship and alertness.

Cpl. Mills was cited for observing a small object in a dark corner of a T-33 cockpit while he was removing the ejection seats for an aircraft periodic inspection. Closer inspection revealed that the object was a live .22 cartridge. He alerted the rest of the inspection crew to this potentially hazardous condition and a full scale search was carried out. A total of eight live cartridges were found.

Cpl. Mills is receiving the citation from Colonel J.F. Dunlop, base commander. (C.F. Photo)

ED's Note: Well done to Cpl. Mills from all FramFolk.

Canada has four submarines in commission, three in the Atlantic and one in the Pacific.

The de Havilland Vampire, accepted January 23, 1948, was the first jet aircraft in the Canadian forces.

NORDIC SOUVENIRS
 "Made in Gimli"
GIFTS
 For All Occasions
 77½-2nd ave. ph 642-5850

meats at reduced prices.

TIP TOP CLOVER FARM

PHONE US AT 642-5418

Plan NOW to stock your freezer with Beef & Pork for the Summer: Beat the predicted price INCREASE:

You can't beat TIP TOP'S purchasing plan.

BUY NOW & SAVE!

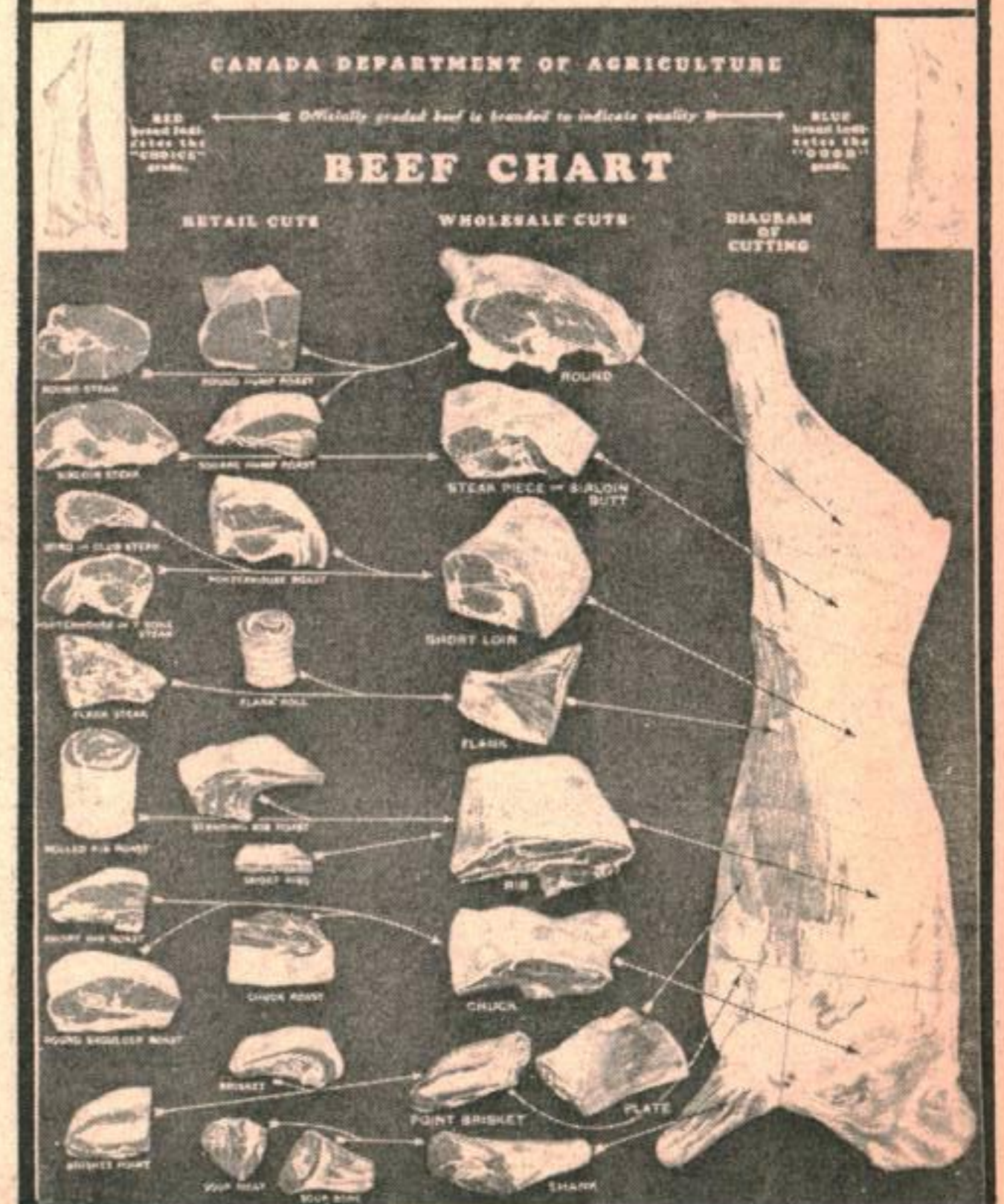
GIMLI AUTO BODY




AS MY TIME AT GIMLI IS NEARING AN END I WOULD LIKE TO TAKE THIS OPPORTUNITY TO EXPRESS MY APPRECIATION TO ALL THE PEOPLE FROM THE BASE AND TOWN WHOM I HAVE HAD THE PLEASURE OF SERVING OVER THE PAST YEARS.

MY FAMILY AND I WILL DEPART FOR GREENWOOD, NOVA SCOTIA 14 APRIL, HOWEVER, I WILL BE AVAILABLE UNTIL THIS DATE TO ASSIST YOU IN YOUR MOTORING NEEDS. THANKS AGAIN.

YOURS TRULY,
 SANDY HERRICK,
 REPRESENTATIVE,
 GIMLI AUTO BODY LIMITED





TOM-BOY

TOM-BOY "BIG T" FEATURE!
A LUNCHEON TREAT
BANANAS
61⁰⁰
LBS \$
YOU RATE MORE AT A TOM-BOY STORE

MEAT MAKES THE MEAL
OLYMPIC BRAND - BY THE PIECE

Bologna LB. **35⁰⁰**

TOM-BOY "BIG T" FEATURE!
FRESH PICNIC STYLE - HOCK ON ECONOMY PRICE.
Pork Roast
PURCHASE EXTRA FOR YOUR FREEZER.
33⁰⁰
LB
YOU RATE MORE AT A TOM-BOY STORE

PRICES EFFECTIVE: MARCH 12, 13, 16


WIN A Toy Datsun For THE YOUNGSTARS ENTRY BLANKS AT THE CHECKSTANDS CALIFORNIA NAVELS

Westfair Products

Presents an Opportunity to

WIN ONE OF 8 DATSUN CARS!

1971 DATSUN 1600 2 DOOR SEDAN



Oranges SIZE 113's DOZ. **85⁰⁰** 10 LB POLI BAG **159**

CLOVER LEAF PINK **Salmon** **2^{7/2} 89⁰⁰** KINGS CHOICE DESSERT WHOLE **Pears** **3²⁸ 100⁰⁰**

AYLMER CANADA FANCY **Tomato Juice** **3⁴⁸ 100⁰⁰** **SpaghETTI** **4¹⁹ 99⁰⁰**

LIBBYS

GIMLI Tom-Boy, GIMLI, MANITOBA

FREE Dotwest FOOD CONSULTING SERVICE P.O. BOX 66, WINNIPEG 1

MENUS & RECIPES • QUESTIONS & TRICKS ON COOKING • SPICE CHARTS • RECIPES

Now AT TOM-BOY

The Best-Selling Canadian Cookbook
OVER 6000 RECIPES

START YOUR SET TODAY!
SECTION ONE AVAILABLE THIS WEEK
ONLY 49⁰⁰


12 EXCITING SECTIONS

SECTION 2 to 12
COLORFUL BINDER AS ILLUSTRATED **ONLY 99⁰⁰**
AVAILABLE A SECTION-A-WEEK

SEE THE COMPLETE BOOK ON DISPLAY AT YOUR LOCAL TOM-BOY

SECTION 9 ON SALE THIS WEEK
FRENCH EDITION ALSO AVAILABLE

WE RESERVE THE RIGHT TO LIMIT QUANTITIES.



TOM-BOY

Westfair Associate

VIKING PHARMACY

PHARMACISTS: Ernest Stefanson, Keith Eyolfson

PHONE 642-5504 Emergency 642-8359/642-5900 WE DELIVER



<p>COLGATE INSTANT SHAVE reg 89¢ Special 59¢</p>	<p>CREST TOOTHPASTE FAMILY SIZE reg \$1.29 SPECIAL 99¢</p>
<p>STERISOL MOUTHWASH 22oz reg \$1.99 Special \$1.49</p>	<p>FASHION QUICK HOME PERMS reg \$2.39 SPECIAL \$1.49</p>
<p>DIPPITY-DO Setting gel reg \$1.35 SPECIAL 99¢</p>	

Watch For Your ARP Flyer For Many More Great Secials

CONSUMERS' NEWS AND VIEWS

by CONSUMERS' ASSOCIATION OF CANADA

Many a homemaker has dreamed of the day when she will own a freezer with all the advantages her freezer-owning friends extoll. No more last minute emergencies; no more humdrum meals; fruit, vegetables, fish and game long past the season; buy in large quantities and make fewer trips to the store; save time and money. All these hopes can come true if you are willing to work at getting the most out of your freezer. But don't count on saving a great deal of money on your food bills. Consumers' Association of Canada would like to remind you the big plus in owning a freezer is the convenience.

You should be prepared for the cost of operation. Proper moisture-vaporproof packaging and containers are a "must". The air in the freezers is dry. If it penetrates the food, it can rob it of flavor, moisture and colour. Electricity, servicing and depreciation are also "red ink" items.

The size of your family, your shopping habits and the type of foods you will want to freeze

should govern the size and type of freezer you buy. A rough estimate of capacity required per person is three to four cubic feet for city dwellers and five to six cubic feet for rural families. Remember, when the freezer size is given in pounds, divide by 35 to convert to approximate cubic foot capacity.

Before choosing your freezer, know where you will place it. Take into account the doors, stairs and areas it will have to be carried through to reach the storage spot. Be sure the floor area is strong enough -- a fully stocked freezer can weigh as much as half a ton. The freezer motor needs a dry place with a temperature of at least 40° F for ideal conditions. Unheated basements and garages are not recommended.

One decision you will have to make is whether an upright or chest type will best suit your purposes. Uprights take less floor space and give easier access to the food; there is better even-cold distribution but you will lose more cold while the door is open. Chest models are cheaper to buy, and are better for storing bulky and odd-

shaped foods like poultry and roasts.

With the exception of the more expensive frost-free uprights, freezers need defrosting once or twice a year. This means removing all food and insulating it in newspapers under a blanket until the ice in the freezer melts. Look for a drain at the bottom to allow the melted ice to drain off, otherwise you will just have to 'sop up' the water. An electric fan played on the frosting will zip it off in jig-time.

You may find some freezers with interior linings that overlap and with sharp corners that can make cleaning difficult. Look for a smooth interior. Most liners are made of porcelain enamel but you will find some aluminum, steel or plastic linings. If the lining is plastic be sure the corners are sufficiently reinforced to prevent cracking if anything is dropped.

Most freezers have thin walls because of the introduction of foam polyurethane insulation. Ask about insulation material. Another important consideration is to be sure the inner and outer walls are well-sealed so that moisture cannot penetrate.

Look for a signal or warning light to let you know if the electricity is off or if the temperature has gone up. Check the location of the temperature control -- some are easier to reach and adjust than others.

Be sure that you get an adequate instruction manual. It should include instructions on how to package foods and details on how long different foods will keep. You should maintain a regular turnover in your inventory of food and that takes planning and work.

It is wise to buy a well-known make from a reliable dealer. Check the guarantee carefully. Some include servicing for the first year as well as parts, while some also have a warranty against food spoilage due either to mechanical breakdown or power failure. For your own protection, remember to have any promises made by the salesman written on the bill of sale.

Consumers' Association of Canada has a leaflet on freezers and freezer food plans available free, in single copies only, by writing, "Freezers", Consumers' Association of Canada, 100 Gloucester St., Ottawa 4, Ontario.

WE RESERVE THE
RIGHT TO LIMIT
QUANTITIES



PRICES EFFECTIVE
MAR 12,13,&15
OPEN....MONDAY'S

AT IGA WE REALLY CARE

PEAS-CORN

YORK 14 fl oz 4/89¢

PORK N BEANS

YORK 14 fl oz 5/\$1.00

JAVEX BLEACH

128 oz 75¢

SUGAR WHITE

10lb \$1.29

BANANAS

CHIQUITA 7lb/\$1.00

BLADE ROAST

89¢

WIENERS OLYMPIC

2lb/\$1.19

FREEZER SPECIAL

FRONT OF BEEF

BLUE BRAND

130-160 lb avg

53¢/lb

FREE DELIVERY

436 To Move

436 TRANSPORT SQUADRON MOVING

436 Transport Squadron based at Canadian Forces Base Uplands, Ottawa will move to C.F.B. Trenton this summer as part of the restructuring of the forces announced by the minister of national defence in September 1969.

The move from Uplands will consolidate all long range transport aircraft in eastern Canada at Trenton. C.F.B. Edmonton is the western base for the forces' transport aircraft.

Approximately 175 aircrew and maintenance personnel and their dependents, along with 12 Hercules aircraft, are scheduled to move to the eastern Ontario base beginning in July.

Maintenance crews at Trenton, now servicing the Yukon aircraft scheduled to be retired in April, along with approximately 75 personnel from 436 Squadron will form a pool to service the Hercules and 437 Squadron's 707s, resulting in the minimum number of moves from the two bases.

Most of 436's maintenance personnel remaining at Uplands will be absorbed by servicing units of other squadrons at the base, in-

cluding 2 Aircraft Field Maintenance Squadron (2AFMS), 412 (short range) Transport Squadron and 450 Helicopter Squadron.

2 AFMS, formed January 1, 1971, will be responsible for major maintenance on all land-force helicopters based in eastern Canada including those at Canadian Forces Bases Petawawa, Ont., Valcartier, Que., Gagetown, N.B. and Uplands.

Although establishment figures have not been finalized, it is expected that with the phasing out of the Yukon aircraft and normal personnel retirement, the move of 436 Squadron will result in little change in the total number of personnel in Trenton.

present a squadron standard to the Canadian forces air reserve 411 Squadron (County of York) at Canadian Forces Base Toronto on June 13, 1971.

The standard is presented to squadrons with 25 years of active service and bears the units' battle honours.

All former members of the squadron are being invited to attend both the formal ceremony and a grand squadron reunion planned to coincide with the standard presentation.

Details will soon be available from: 411 Squadron Reunion Committee, P.O. Box 411, Downsview, Ont.

411's battle honours include the Defence of Britain, 1941-44; English Channel and North Sea, 1942-43; Fortress Europe, 1941 and 1944; and France and Germany, 1944-45. It also holds subsidiary honours for Arnhem, Dieppe, Normandy and the Rhine.

411 Honored

AIR RESERVE SQUADRON PLANS CEREMONY

TORONTO (CFP)--His Excellency, The Right Honourable Roland Michener, governor general of Canada will

IF YOU LIKE HOMEMADE BREAD
'MADE WITHOUT CHEMICALS'
BUY IT AT YOUR LOCAL BAKERY

•16 OZ PANBREAD 5 for \$1.00

•16 OZ SLICED BREAD 5 for \$1.05

•16 OZ IRISH-SEED-RYE and BROWN 5 for \$1.15

•HAMBURGER, WIENER and BREAD BUNS DOZ/45¢

•WEIGHTWATCHERS WHOLE WHEAT BREAD 25¢

CENTRAL BAKERY, GIMLI PH 642-5544

NORSEMEN MOTEL

Anybody moving?

Check the NORSEMEN MOTEL
Complete furnished housekeeping
units and furnished apartments
for rent.

81-6th Ave 642-5234

Your host - Mickey Beauchemin

DROP IN

to the

LAKE INN

GIMLI MAN

'NOTICE'

ANY HOUSES TO BE VACANT LONGER THAN THIRTY CONSECUTIVE DAYS

-----ADVISE YOUR INSURANCE AGENT TO ENDORSE YOUR

FIRE INSURANCE POLICY. IF THIS IS NEGLECTED A FIRE LOSS MAY
BE DENIED.

— COURTESY —

INTERLAKE AGENCIES

Carnival Final Finish

FINAL STANDING GIMLI WINTER CARNIVAL

EVENTS	FTS	MAIN.	HQ	TOWN
TUG-OF-WAR				
Men	5	6	8	8
Ladies	6	8	6	7
VOLLEYBALL				
Men	0	2	5	6
Ladies	4	2	5	6
WATER BASKETBALL				
Men	8	0	5	6
Ladies	8	6	0	7
LOG SAWING				
Men	5	7	8	6
Ladies	5	7	6	8
SACK RACE				
Men	5	6	8	7
Ladies	5	6	8	7
EGG CARRY				
Men	7	6	5	8
Ladies	6	5	8	7
EGG TOSS				
Men	8	7	6	5
Ladies	8	5	7	6

BEER DRINKING

Men	8	5	6	7
Ladies	8	5	6	7

BOWLING, MIXED

"A"	7	8	6	5
"B"	7	8	6	5
Men "A"	6	7	8	5
"B"	6	8	7	5
Ladies "A"	6	7	8	5
"B"	5	8	6	7

BADMINTON

Men	8	7	5	6
Ladies	8	6	5	7

CURLING, MIXED

"A"	5	7	6	8
"B"	8	7	7	8
"C"	5	6	8	7
Men "A"	7	6	8	5
"B"	7	7	8	8
"C"	6	8	5	7
Ladies "A"	7	8	6	6
"B"	5	7	8	6
"C"	5	7	6	8

BROOMBALL

Men	5	6	8	8
Ladies	6	7	5	8

BRIDGE

Men	7	8	5	6
Ladies	8	6	5	8

CRIBBAGE

Men	6	7	5	8
Ladies	5	7	8	6

DARTS

Men	11	13	15	8
Ladies	12	15	10	16

TOTALS	264	274	271	284
---------------	------------	------------	------------	------------

FINALS-BEARD CONTEST

BUSHIEST

1. Jack Malcolmson
2. Ev Penny
3. Mike Boychuck

SOFTTEST

1. George Pitman
2. Ken Hutcheson
3. Red Bryson

UNIQUE

1. John Williamson
2. Al Sergeant
3. Sid Colbuck

OVERALL

1. Lew Wright
2. Paul Bellefleur
3. Buzz Wray

MOUSTACHE

1. John Harrison
2. Carl Shermerhorn

The only unsavory event which marred any of the events of the Carnival was due to unscrupulous unknowns (fortunately) who saw fit to help themselves to the peoples coats. Two coats are still missing one of which is valued at \$150.00.

This was the last joint social function for the town and the base and judging by participation in the events and turn-out at the dances everyone enjoyed themselves whole-heartedly. It truly is a shame that an era has come to pass.



BASE AUTO CLUB



LOOK HERE

FANTABULOUS SAVINGS

DUNLOP SUMMER TIRES

are now in your Auto Club

DROP IN AND SEE FOR YOURSELF

10:00 AM to 7 PM ~~~~~ MON - FRI

10:00 AM to 5 PM ~~~~~ SATURDAY

CLOSED SUNDAYS and HOLIDAYS

DIANE'S BEAUTY SALON at 20 Sixth Ave. is open for your convenience Tuesday through Saturday.

I AM ALSO OPEN AFTER SUPPER ON TUES. AND WED NIGHT!!

TINTS, PERMS AND WIG STYLING ARE OUR SPECIALTY.

For appointment call 642-8850

DIANE'S BEAUTY SALON



A COMPLETE LINE OF FURNISHINGS FOR THE HOME

ARNASON FURNITURE CO.

FURNITURE AND APPLIANCES

TV SALES AND SERVICE • ELECTROHOME • WESTINGHOUSE • GENERAL ELECTRIC

PHONE 642-7954

BOX 130 GIMLI, MANITOBA



BEARD FINALISTS....BIG ones ---
small ones --- some the size of your
 head. (C.F. Photo)

GIMLI WINTER CARNIVAL/71

WIND-UP

FINAL
 REPORT



FINAL
 REPORT

GIMLI WINTER CARNIVAL CONCLUDES

C.F.B. GIMLI.....The last major joint town/base entertainment function, the Gimli Winter Carnival, concluded last weekend.

The carnival opened on Friday, 26 February, and for the nine days to follow the town and three base divisions engaged in numerous sporting competitions which included water basketball, curling, egg throwing, log sawing, etc. The competition was keen and the fun level was high.

The formality of announcing the overall winner of the competitions, and the trophy presentation, was performed on Saturday evening at the wind-up dance held in the C.F.B. recreation centre. Shown above is Carl MacDonald, left, donor of the trophy, as he bestows the honours on John Williams, right, who accepted the award on behalf of the town participants. Lieutenant Jack Anslow, centre, carnival organizer looks on as the presentation was made.

The town of Gimli intends to maintain the tradition of holding an annual winter carnival after the base is closed this fall.

(C.F. Photo)

LADIES SAW LOGS.....Lumberjacks
in the old days sure didn't look
like this. (C.F. Photo)



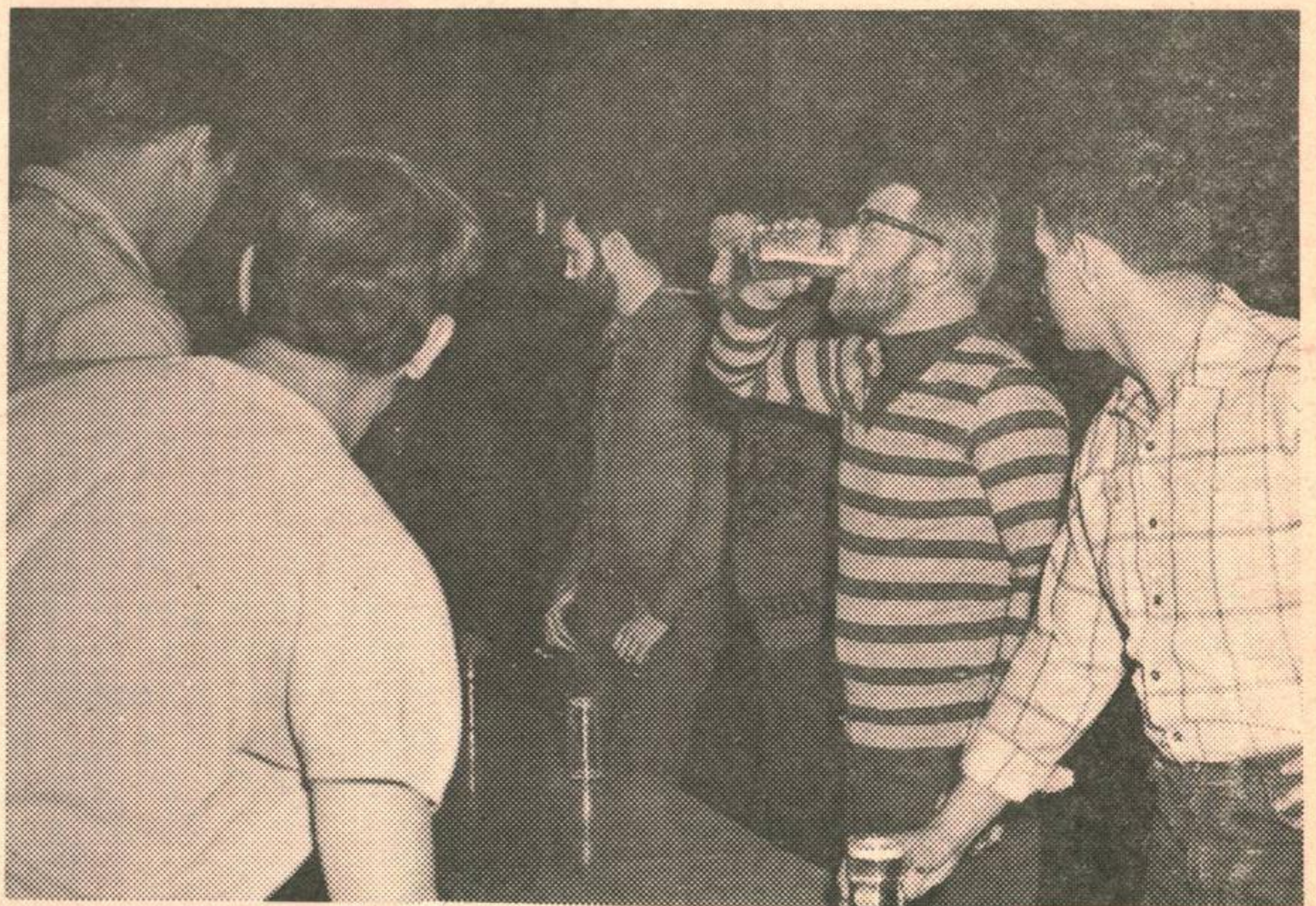
MEN SAW LOGS.....These guys were
so fast that three of the four
ladies' teams beat their time.
(C.F. Photo)

TUG-O-WAR.....Stocking feet style.
Maintenance men at the Novelty Night.
Note the enthusiasm of the on-look-
ers. (C.F. Photo)





EGG THROWING.....Here comes egg on the face. (C.F. Photo)

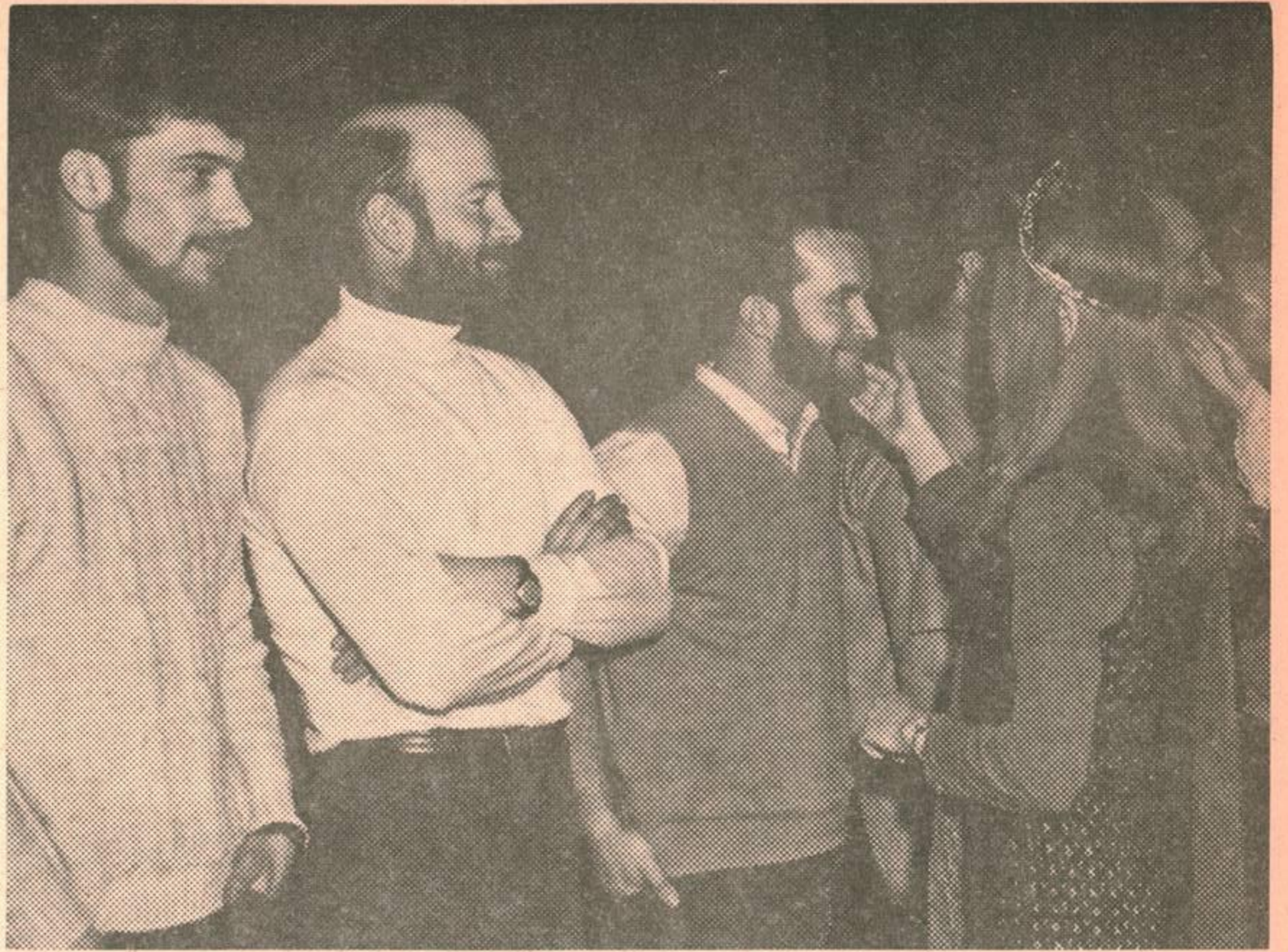


CHUG-A-LUG.....With a strainer like that it's no wonder the time was so slow. (C.F. Photo)



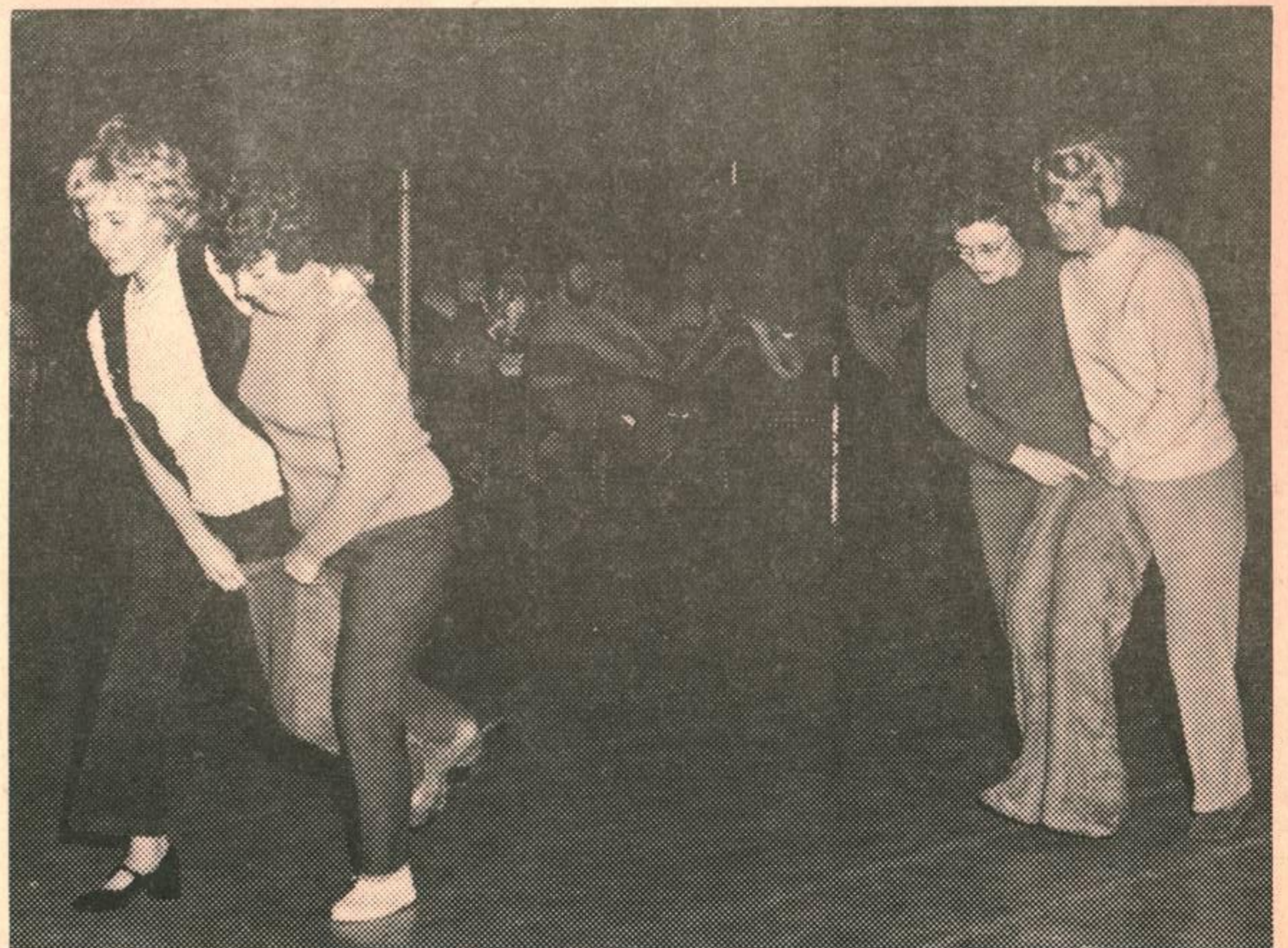
LADY SPONGES.....Man "That's Coffee". (C.F. Photo)

BEARD SEMI FINALS.....Who's your hairdresser? (C.F. Photo)



BEARD WINNERS.....Left to right, Lou Wright, best overall; John Williamson, most unique; George Pitman, softest; Jack Malcolmson, bushiest; and John Harrison, best moustache. (C.F. Photo)

THREE-LEGGED RACE.....right left, left right, right left.(C.F. Photo)



Children's Events

BOYS - Thirteen Years Old

FIRST - Jim Whitehead
JAM PAIL CURLING: (First Event)

FIRST PRIZE

TEAM

Margret Isfeld Peter Anslow
 Tim Gottfried Tommy Eaton

SECOND PRIZE

TEAM

Steven Gilroy Shirley Hudson
 Leann Wilson Catherine McLoughlin

THIRD PRIZE

TEAM

Carl Charron Ken Archer
 Russel Harrison Stuart Wright

(Second Event):

FIRST PRIZE

TEAM

Pauline Bohemier Barbara Arnason
 Kathy Moskal Elizabeth Rodgers

SECOND PRIZE

TEAM

Jill Griffiths Susanne Fontaine
 Tammie Wilson Andrew McInnis

THIRD PRIZE

TEAM

John Theriault Tammy Snedden
 Theresa McInnis Kathy Nelson

(Third Event):

FIRST PRIZE

TEAM

Jim Whitehead Wayne Pitman
 Warren Hill David Henry

SECOND PRIZE

TEAM

Darryl Sylvester Dwayne Arnason
 Bradley Balgardson Michel Gingirch

THIRD PRIZE

TEAM

Judy Lugg Jimmy Larlham
 Jamie Magnusson Sheri Lutomski

Although last Saturday was a blustery day, many of the would be Don Duguids were out at the Gimli wharf to try their hand at Jam Pail Curling. Listed below are the winners.

Very few skaters turned out and winners of the few events run off are also listed.

Supervising the various events were All Lugg and Roger Cameron of the P.M.Q. and E.H.D. council, along with several chilled parents.

SKATE RACES:

GIRLS - Five and Six Years Old

FIRST - Joemann Whitehead
 SECOND - Jean Anslow
 THIRD - Nancy Naylor

BOYS - Eight Years Old

FIRST - David Cherniak
 SECOND - Andrew Rogers

BOYS - Nine Years Old

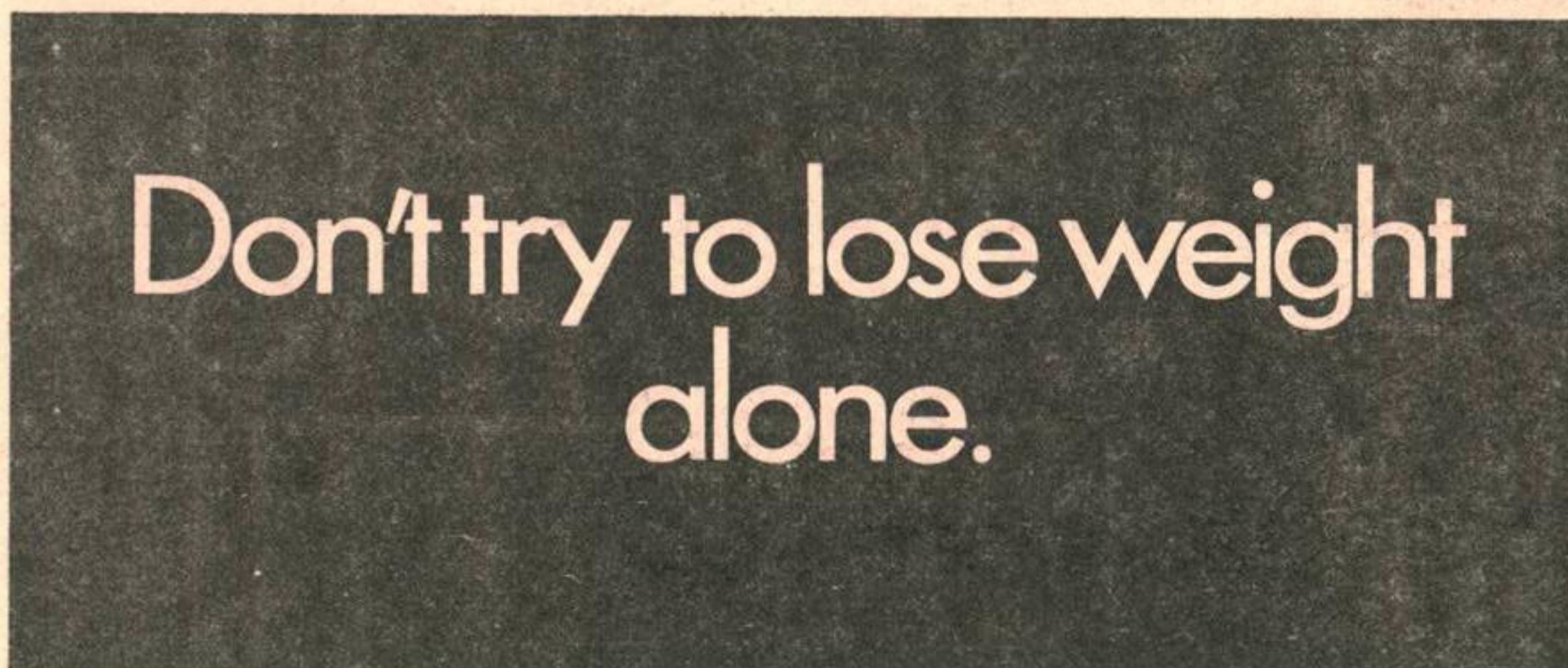
FIRST - Gary Pearson
 SECOND - Jeremy Gilroy

GIRLS - Ten Years Old

FIRST - Barbara Whitehead
 SECOND - Lorene Cherniak
 THIRD - Shelley Lugg

Oldest military educational institution in Canada is Royal Military College of Canada, at Kingston, Ontario, founded in 1876.

MACLEODS
 SPRING CLOTHES
 NOW AVAILABLE
 DROP IN
 AND
 SEE THEM



Trying to lose weight all by yourself can be a lonely, torturous undertaking. And often an unsuccessful one.

If you've tried and failed—internationally-famous Weight Watchers® may be for you. Here we help each other stick to a

sensible, satisfying weight control program. No starvation diets. No pills. You eat three full, hearty meals a day and snacks in between, too. At Weight Watchers, you can learn to lose weight and keep it off.

This time, don't try it alone.

WEIGHT WATCHERS®
 Some talking, some listening, and a program that works.



Call Collect 942-4284 Today
GIMLI CLASS, Lutheran Church,
 3rd Ave, Gimli, Man.
 Tuesday 8 PM



© Weight Watchers International, Inc. 1968
 "Weight Watchers" and "WW" are registered trademarks of Weight Watchers International, Inc., Great Neck, N.Y. 7-250 (#00)

GIMLI HOTEL
(The Whitehouse)
 OVERNIGHT ACCOMODATION
 REASONABLE RATES
 ENTERTAINMENT
 WED TO SAT



JUNIOR WINTER CARNIVAL BONSPIEL....
Held 27 February 1971, C.F.B. Gimli
....there were twelve rinks entered

The winning rink in "A" division was skipped by Dennis Levesque with the runner-ups skipped by Alan Bell Chambers. "B" division winning rink was skipped by Glen Aldwinckle with the runner-ups skipped by Terry Johnson.

INTERSECTION PLAY-OFFS

GIANTS-5 WINGS-4

On Monday the first game of the finals was played between the Giants and the Wings. The game was a hard fought contest with plenty of opportunities for both teams but the goalies Robin Walker and Craig Cerniak both had excellent

games. Cherniak even stopped Sandy Herrick on a penalty shot, gloving the puck just inches from the goal line.

Scoring for the Giants were Arnie Biluk with three, Rick Roemer and Randy Leeuw had singles. For the Wings it was Gord Cousineau, Sandy Heric, Bart Barteau and Romeo Perrier.

Hockey

...FOLLOWING THE GIMLI MIDGETS...

The Gimli Midgets were defeated by Elm Creek in the quarter-finals of M.A.H.A. play-downs.

In the first game played at Gimli, the score was 10-6 in favour of Elm Creek. Gimli scorers were Sandy Prise, James Kozlowski, Lee Newport each with one goal and two assists. Glenn Aldwinckle, John Barker and Glen Stevens had one goal and one assist a piece; Gordon Sylvester picked up one assist. Gimli lost starry right winger Warren Magnusson with an injury in the game.

The second game played at Elm Creek saw Gimli fight gamely for a come back but lost 7-2. Lee Newport scored both Gimli's goals, one unassisted and the other assisted by Glenn Aldwinckle. Ed Sawa turned in a stand-out performance in goal for Gimli.

Undoubtly Elm Creek, the defending champions, have a fine team, a combine of Elm Creek and three other towns, like every team that Gimli met in the play-downs, these teams were the products of three or four teams combined in one.

Gimli's midget team - a very young team with 2-14 year olds and 3-15 year olds in the line-up were true representatives of Gimli, as all were local boys. All "GIMLITES" should be proud of the fine hockey their boys played through-out the competitions. The team will now continue to play exhibition games.

M.A.H.A. TEAM STATISTICS

	G	A	Total Pts
W. Magnusson	15	9	24
L. Newport	9	15	24
G. Stevens	6	9	15
S. Prise	4	5	9
J. Kozlowski	1	5	6
D. Sinclair	4	1	5
G. Aldwinckle	2	2	4
J. Barker	1	2	3
G. Sylvester	1	1	2
R. Kurlicki	1	1	2
G. Eisling	1	0	1
W. Wawrykow	0	1	1
K. Kernested	1	0	1
B. Einarson	0	0	0

GAMES PLAYED - 8 (one game conceded)
GOALS FOR - 46 GOALS AGAINST - 34



**GORD'S SOLO
FOR
SUPER VALUES**



PRICES EFFECTIVE MAR 11 TO MAR 17

- LIPTON'S
- CHICKEN NOODLE SOUP 2'S 2/49¢
- DEL MONTE W.K. CORN
- CREAM CORN PEAS 14oz 5/\$1.00
- LIBBY'S DEEP
- BROWNE BEANS 14oz 5/\$1.00
- JAVEX
- BLEACH (13¢ off) 128oz 69¢

BREAD 16 oz loaf 5/95¢

**WATCH WINNIPEG PAPERS FOR
MANY MORE SUPERSPECIALS**



CASHCHEK - Card holders will receive 5% discount on orders over \$5.00 except, tobacco, soft drinks, milk, butter, eggs, bread and specials.

PRODUCE

- B.C. APPLES Mac's 3lbs 49¢
- GRAPEFRUIT size 48s 10/89¢
- PEARS anjou 2lbs 49¢
- CABBAGE texas 11¢/lb

WE RESERVE THE RIGHT TO
LIMIT QUANTITIES

- HIP or RUMP ROAST 1b \$1.15
- MAPLE LEAF
- PICNICS R.T.E 1b 49¢
- MAPLE LEAF
- SIDE BACON 1b 69¢
- PORK BUTT ROAST 1b 49¢

**NOW IN GIMLI
ELECTROLYSIS**

Have Unwanted

HAIR

Removed Permanently

PHONE 642-7215

**TV ANTENNA
REMOVAL
SERVICE**

- TV ANTENNAE AND HARDWARE
EXPERTLY REMOVED

- READY FOR MOVERS

Ph. 8138 Fri & Sat & 8224 after 6pm
Let George do IT!

CF Ski Champs

CANADIAN FORCES SKI CHAMPIONSHIPS

The week of February 21 to 28 saw members of our Viking Ski Club racing with the Prairie Region Ski Team at the Canadian Forces National Ski Championships in Valcartier, Quebec.

Leading up to the meet in Valcartier the prairie racing team held trials in Thunder Bay, Ontario, to choose an A and B team. Once chosen, the teams ventured to Banff, Alberta, for two days of practice racing. While in Banff, all members took part in a Molstar race held at Mt. Norquay. Transportation to Banff was in the form of a Dakota aircraft supplied by C.F.B. Winnipeg.

The prairie racing team arrived in Valcartier on Sunday, February 21 after a flight from Winnipeg to Ottawa and a bus from Ottawa to Valcartier. Accommodations were arranged from Ottawa to Valcartier. Accommodations were arranged on Camp Valcartier at the civil defence bunker. Contrary to what it may seem, the bunker offered very comfortable sleeping quarters, dining room, laundry facilities, and a limited recreation area.

The races were held at "Castor Centre", a military operated ski area on the base itself. The meet was run very efficiently by officials selected from bases across Canada.

Coached by Major Jerry Westphal, the prairie A team placed seventh overall. After a slow start on the downhill race, the prairie B team

finished quite strong with good times recorded in the Giant and special Slalom events.

All in all, the members of the Prairie Region Ski Team were quite pleased with the results of the meet. Look out next year Valcartier.

Announcement

STATEMENT BY THE MINISTER OF NATIONAL DEFENCE

The Honourable Donald S. Macdonald, minister of national defence, announced today that the government has authorized the purchase of a fifth Boeing 707 long-range jet transport for the Canadian forces.

The aircraft will join four others which have been in service with the Canadian forces since March 1970.

The 707s replace Air Transport Command's 12 turboprop Yukon aircraft scheduled to be phased out of service by the end of next month.

The additional aircraft will provide greater flexibility, which was not sufficient with four 707s, to cope with the long range transport commitments that can occur at the same time.

In addition to these commitments two of the aircraft are being modified to provide an inflight refueling capability for the deployment of short-range fighter and tactical aircraft.

Total cost for the new 707 is estimated at between \$10 and \$11 million including spare parts, which will be met within the fixed defence budget ceiling for 1970-71.

Annual operating costs for the five 707s will be just under \$11.5 million as compared to \$16 million for the Yukon fleet.

GIMLI TAILOR

Gents Suits
Officers' Uniforms
NEXT TO THE LAKE INN RESTAURANT



THE *falcon lounge*
OF FIRST AVENUE
GIMLI, MAN.

EATONS

CATALOGUE SALES OFFICE

FASTEST
SERVICE

IN GIMLI

Phone
642-5158

Catalogues available

CATALOGUE
& RETAIL SERVICE

RICHARDSON & COMPANY

BARRISTERS AND SOLICITORS

274 Garry Street, Winnipeg 1, Manitoba Telephone - 957-1670

GREY RICHARDSON	Q.C.	GARY R. SMITH	B.A.,LL.B.	JAMES H. COOK	B.A.,LL.B.
CHARLES R. HUBAND	LL.B.	DAVID I. MARR	B.Sc.,LL.B.	J.F. REETH TAYLOR	Q.C.
WILLIAM NORRIE	B.A.,LL.B.	PHILIP L. ASHDOWN	B.A.,LL.B.,M.B.A.	W. SCOTT WRIGHT	Q.C.
GARTH M. ERICKSON	B.A.,LL.B.	COUNSEL: BERT V. RICHARDSON	Q.C.	WALTER J. KEHLER	B.A.,LL.B.

PHILIP L. ASHDOWN of the firm of Richardson & Company attends at the Gimli Credit Union Office, Gimli, from 3:30 p.m. to 5:30 p.m. on the first and third Wednesday of each month.



Gimli Florist

"FLOWERS FOR ALL OCCASIONS"

ORDER 2 WEEKS EARLY AND

SAVE

ON TELEGRAPH CHARGES

PHONE 642-5298

78 FIRST STREET



SAY IT WITH FLOWERS
THIS EASTER

MINOR HOCKEY

A very light week in house league due to the Carnival. Only three games played.

On Monday night Tom Thumb Leafs man-handled North Stars to the tune of 5 to 2, it was a very close game. Going into the third period it was two all, then Leafs broke it open on two goals by Darrel Sylvester and Keith Tucker's second goal. Bob Stinson scored the first goal for Leafs. Assists went to - Sylvester, Scott Valgardson, two by Paul Parkinson and one to Cammie Goodman. Scoring for Stars was Raymond Manara, Blair Walker, Ronnie Gagnon assisted Walker's goal.

In the second game Canadians swamped Boston to the tune of 6 to 0. Melvin Biluk was the big gun again for Canadians firing in three goals. Richard Bohemier, David Oakley and Douglas Cramer scored singles. Brent Solmundson and Weinberger had two assists each. Terry Krulicki and Bohemier had singles. Blair Chudd in net for Canadians played outstandingly and robbed Boston time and again.

On Saturday in G.R.A.F.T. league action Gimli once again came up with a perfect day winning all three against Arborg. In the Pee Wee game it ended 12 to 1 with M. Magnusson the only Arborg boy able to dent the twine behind our twin goalies, Tim Gottfried and Peter Anslow. Mark McLoughlin was the top marksman for Gimli with three goals and four assists. Allen Lukiw had two goals and two assists, Troy Valgardson one goal and three assists, Darrel Klym one and two. Brent Solmundson and Ronnie Warcimagaga both had one goal and one assist, Scott Valgardson - two goals, Darren Crouch - one goal and Greg Arnason had two assists.

In the Tom Thumb game, after a slow start, saw Gimli fall behind 1 to 0 then go ahead 2 to 1 only to have Arborg come back to tie it near the end of the second period and it looked like the home team boys might lose their first game. But in the third period two quick goals by Gimli seemed to give them new life and they went on to win 6 to 2. Dale Martin and Melvin Biluk each had two goals for the winners. Daryl Sylvester and Terry

Krulicki scored singles. Assists went to Sylvester with two, Keith Tucker, Tim Valgardson, Terry Robinson, David Oakley, George Shaw Jr. and Blair Walker, all with one each. A Senkow and J. Manchak notched singles for the losers. As-

sists went to M. Magnusson, B. Taylor and D. Kindzierski.

In the Bantam game Craig Cherniak notched his fourth shut-out in a row in G.R.A.F.T. league action, while his team mates came up with some of their best hockey of the year in both defensive play and offensive play. They scored two in each period on their way to the 6 to 0 shut-out. Ron Krulicki once again led the winners with the hat trick plus one assist. Randy Martin, Reid Kuzik and Allen Esling all had singles. Ken Kernsted had two assists, singles went to Barry Penizwol, Randy Martin and David Laustch.

Last Tuesday in Bantam the score ended up two all between Leafs and Canadians. Joey Kopish and David Laustch scoring for Canadians. Lorne Smith and Michael Dell replying for Leafs. Smith also had one assist.

Have Pass - Will Travel

OTTAWA (CFP)--If you don't have it, you won't get on.

Air movement units across the country report that persons going on service flights while on leave are arriving at AMUs without the required documentation.

CFAO 20-20 Annex B, Para. 36 states that each passenger must carry a properly authorized Canadian forces leave form stamped with the unit orderly room stamp. In the case of family groups, the leave form must bear the names of all members of the family travelling together and the reservation centre message number which confirmed the space.

There are also additional documents required for those going on leave overseas.

Don't spoil your vacation - read the orders and have all the necessary documents with you before leaving for the airport.

Without them you won't travel service air.

Kardy's HARDWARE

Your FIRST STOP STORE for

HOUSEWARE-GIFTWARE-PAINT

642-8838

Ted Jenkins

LADIES and MEN'S WEAR

SOME GREAT SPECIALS:

COTTEN DENIM SLACKS from DAYS

GREAT FOR ROUGHING IT Olive Green Gold Beige Brown

Sizes 29,30,31,&32 \$4.99ea

SWEAT SHIRTS from PENMANS

LONG SLEEVE ALL COTTON WITH FLEECE LINING Gold, Blue, Green

Crew Neck reg \$3.00 SPEC \$1.99 Hooded reg \$4.50 SPEC \$2.99

SHORT SLEEVE DRESS SHIRTS

PERMANENT PRESS STYLISH LONG COLLAR

Coral, Green, Gold, Purple, Yellow, Blue Sizes 14½ TO 17 \$3.95ea

UNISKINS by mac



THE MART cont'd.

For Sale: 1970 Arlberg snowmobile. Model-Magnum 340, 336 cc, 29 hp with 15" track, Tach and speedometer on the dash, key ignition, manual start, mileage - 490. Silverliner Tilt-swivel snowmobile trailer, used 3 times. Size med. snowmobile helmet, new condition. Man's Arlberg snowmobile suit, size 44, new condition. Size lge. man's snowmobile mitts. Retail prices: Snowmobile-\$995, trailer-\$159, suit-\$37.95 = total \$1191.95. Will sell all above listed items (including snowmobile cover) as a package deal only for \$600.00. And....Jack Nicklaus signature golf clubs-mens-right hand set: 2 woods, with 3,5,7,9 irons and putter. Complete with maroon and black vinyl Power Flite golf club

bag, cover, tubes and leather upholstered and padded tube separator. Cardinal large wheel club bag cart. Retail-\$126, will sell for \$70.

Also....30-30 Winchester Model 94, complete with sheath. Like new-(1 scratch) Price: \$75.00.

.....Red, yellow and blue pedal tractor. Good condition, price: \$4.00. FOR FURTHER INFORMATION ON ANY OF THE ABOVE ITEMS MAY BE OBTAINED BY CALLING 642-7284 or MAY BE SEEN AT 125-3rd Avenue, Gimli.

For Sale: Rempel Spring Horse "Flying Cloud" pinto, heavy springs, excellent condition \$15.00. Also large crib and mattress, Thistle "pram style" carriage, baby lounge seat, jolly jumper. Phone: 5627 after 6:00 p.m.

For Sale: HOT WHEELS-Super Charger set-\$6.00 -includes-one super charger, two batteries, 16' of track plus joiners, one car, two trestles, two curves. EXTRA TRACK-\$3.00-includes-21 ft. of track, one car and one clamp. EASY-BAKE OVEN-\$5.00-includes-light bulbs and trays. Phone: 642-5918.

CHUDD & SONS

Gimli's CHRYSLER Dealer

SHELL oil products

642 - 5329

TAYLOR PHARMACY

YOUR A. R. P. VALUE CENTRE

CENTRE AND SIXTH GIMLI

RES DAN 10 oz SPEC \$1.99

ANACIN TABLETS 100'S SPEC \$1.09

SCOPE MOUTHWASH 17 oz SPEC \$1.39

BASSETT'S LICORICE ALL SORTS 21 lbs SPEC 88¢

LISTERINE ANTISEPTIC 20 oz ECONOMY SIZE SPEC \$1.29

HEAD 'N' SHOULDERS SHAMPOO FAMILY SIZE SPEC \$1.59

PEAK FREANS ASSTED COOKIES 16 oz FAMILY SIZE SPEC 49¢

RICHARD HUDNUT SHAMPOO & CREAM RINSES reg \$1.29 SPEC 79¢

BOBBY ORR SUPER PEN SALE BUY 2 & GET 4 FREE \$1.74 VALUE

NOW ONLY 83¢

CHECK YOUR FLYER FOR OUR BIG ARP BONANZA SALE MARCH 16 - 21

"YOU'LL SAVE MORE AT TAYLOR PHARMACY"

PHONE 642-7470 FOR FREE DELIVERY EVENINGS AND EMERGENCY 642-5810

Protestant Chapel

Reverend D.W. Hilton
Phone: 156r2

SUNDAY - 14 March

10:00 a.m. - CLOSING-OUT SERVICE
Preacher: Brigadier
-General (The Rever-
ent) J. Cardy, chap-
lain general.

1:00 p.m. - Banquet in the Offic-
ers' Mess. There will
be a nursery in the
games room.
- GUEST SPEAKER: Rever-
ent, Doctor S.R. Mc-
Leod.

2:00 p.m. - Movies for the child-
ren in the base thea-
tre.

THURSDAYS

6:45 p.m.-Junior Choir practice
7:30 p.m.-Senior Choir practice

BAPTISMS - by appointment only.

MARRIAGES- one month notice is re-
quested by the Chaplain.

Roman Catholic Chapel

OUR LADY OF LORETTO CHAPEL
CFB GIMLI, ASPEN PARK, MAN

Major (Rev.) J. Georges Savote
B.A., LPh., Bth.
Phone: 156

MASSES

Sunday - 9:00 a.m. and
- 11:15 a.m.
Weekdays - 5:00 p.m.

CONFESSIONS

Saturday - 4:00 p.m. - 5:00 p.m.
Before each Mass and whenever
you feel like it. We will try
to accommodate everyone.

BAPTISMS

By appointment-usually on Sunday

MARRIAGES

1. Give two months notice to
your Chaplain.
2. For a Mixed Marriage - four
months notice would be pre-
ferable since the non-Cath-
olic party needs to take a
few instructions about the
Catholic faith.

ALTAR SERVERS - Meeting every last
Friday of the month at 7:00 p.m.

GIMLI LUTHERAN CHURCH

PASTOR - Ingthor I. Isfeld

SUNDAY

9:45 a.m. - Sunday School
11:00 a.m. - FAMILY WORSHIP

THURSDAY

7:00 p.m.-Junior Choir practice
7:30 p.m.-Senior Choir practice

GRACE BAPTIST CHURCH

Second Avenue, Gimli
PASTOR - Elmer Bragg
PHONE: 642-5707

SUNDAY

10:00 a.m. - Sunday School
11:00 a.m. - Morning Worship
7:00 p.m. - Evening Service-
Guest Speaker: Reverent Don
Merrett of Boys Brigade -
slides will be shown.

WEDNESDAY

7:00 p.m. - Evening Service
Bible Study and Prayer.

FRIDAY

7:30 p.m. - Young People's
Evening Service.

HIAWATHA BAPTIST

THE BIBLE TELLS US.....Continued

8. On A Modern Day Subject.....
POLLUTION

Ezekiel 16:6- "I saw thee pollut-
ed.....and said, LIVE.

1. Pollutions Effect On Man.
Mark 7:21-23-For from within,
out of the heart of man pro-
ceed evil thoughts, adulter-
ies, fornications, murders,
thefts, coveteousness, an
evil eye, blasphemy, pride,
foolishness, all these evil
things come from within and
defile (pollute) the man.

2. Pollution is escaped by no
one.

Proverbs 20:9-Who can say, I
have made my heart clean, I
am pure from my sin?

Isaiah 64:6-We are all as an
unclean thing, and all our
righteousnesses are as filthy
rags.....

Romans 3:10-As it is written,
there is none righteous, no,
not one.

3. Pollutions only Remedy.

I John 1:7-The Blood of Jesus
Christ God's Son, cleaneth us
from all sin.

4. How to appropriate Pollu-
tions Remedy.

Chapel News

(Reprint)

MILITARY VICARIATE

160 Clemow Ave.

Ottawa, 18 February 1971

Dear Friends:

Lent has come once again. Being
the season of preparation for Eas-
ter, it is a very important time
in every year of the life of one
who wishes to be a faithful Chris-
tian and give Easter its true
significance. For Easter makes us
conscious of our destiny and re-
minds us Christ is our salvation.

The Lenten season opens the
door to a many-faceted reflection.
We may take this opportunity to
focus our attention on one of the
pressing problems of the present
time, that of loneliness. To over-
come this difficulty Christians
must understand the urgency for
the local community of believers
to become more fraternal.

All of us have experienced in
these times of change and confu-
sion, loneliness along with lack
of peace of mind and difficulty
of seeing clearly. We know what it
means to be misunderstood, to be
divided and to be rejected. But we
also know what it is to love, to
be joyful and to be filled with
hope through the help and concern
of others. Lent can be a challenge
to be attentive to others, to let
them find in us a meeting place
where mutual help and understand-
ing are to be found.

In order to be conscious and
helpful of others, our hearts
must be opened by prayer and pen-
ance. These indispensable means,
Christ offered us to be His true
followers were not shrouded in
mystery. He said, "Whoever wishes
to follow me must take up his
Cross daily and follow me." There
never was and will be a way to
peace of soul and fraternal love
other than the way of prayer and
penance, the way of the Cross.
With these words, our Lord wanted
to provoke us; they disturb our
scattered, superficial and com-
placent lives.

The loneliness and worry of
these troubled times can be dis-
pelled if we are men and women of
authentic prayer, people of fre-
quent dialogue with God. We must
also be men and women of authentic
penance; for we must be capable of
mastering ourselves if we are to
have interior peace and be capable
of thinking of others in a frater-
nal way.

The church has done away with certain penitential practices. The Christian, conscious of the need for prayer and penance is to determine for himself in the intimacy of his conscience, the means of sanctifying himself during Lent. Are we willing to respond to the call of Him whom alone we recognize as Master of Peace, the Source of our Hope?

My dear friends, these are only a few of the many reflections on the season of Lent. May we be united with Christ during this season in the apparent failure of His mission before and at the time of His death. May we rise with Him at Easter in the "fullness of hope", peace and understanding.

Faithfully in Christ,
F.J. Spence
Auxiliary to the
Military Vicar

PMQ Rent Rates

MQ CHARGES REVISED

OTTAWA (CFP)--Some servicemen living in married quarters are not yet paying the national average based on CMHQ appraisals for the type of quarter they occupy. Therefore, they will pay increased married quarter charges effective April 1, 1971, in accordance with the plan announced early in 1968.

Maximum increases for sergeants and below, officer cadets, second lieutenants and lieutenants remain unchanged at \$15.00 per month.

It is estimated that approximately 15% of those occupying married quarters will be affected by the revisions.

Under the new schedule, the maximum monthly increase for warrant officer, master warrant officer and chief warrant officer is \$17.00; captain, \$17.00; major, \$20.00; lieutenant-colonel, \$25.00; colonel, \$30.00; brigadier-general, and above, \$35.00.

According to Canforgen 020 of Feb. 5 the schedule changes result from a treasury board observation on the slow rates of progression of senior personnel toward national average charges based on Central Mortgage and Housing Corporation appraisals for the type of quarters occupied.

The increase in all cases will be the lesser of the amount required to bring payment up to the national average charge for the married quarter; that amount required to bring payment up to 25% of salary; or the maximum prescribed for ranks outlined above.

A revised schedule of married quarters charges in Germany, based on recent re-appraisal, has been approved by treasury board and will be introduced effective 1 April 1971. The revised scale of annual increases mentioned above will also apply to MQ occupants in Germany effective 1 April 1971.

Monthly increases for civilians occupying married quarters will be the same as for their military rank equivalent.

Starlite Theatre

Show Times

8 PM Sat Mat 1:30 PM



SAT

MAR 13

SON OF FLUBBER

+ CARTOON

90 MIN

GENERAL

SUN MON

MAR 14-15

THE LIBERATION OF L.B. JONES

CAST

LEE J COBB BARBARA HERSHEY

110 MIN

RESTRICTED

THUR

MAR 18

CAMILLE 2000

115 MIN

RESTRICTED

FRI

MAR 19

A TIME TO SING

CAST

HANK WILLIAMS JR

95 min

General

TARGET STORE

Complete Family

Clothing

642-5246

Tues. to Thurs. 9am-6pm

Friday 9am-7pm

Saturday 9am-6pm



Selkirk Funeral Chapel

** serving the Interlake Area
with dedicated service
** 24-hour Ambulance service

Phone 482-6284

Res. 482-5419

209 DUFFERIN AVE.
GARTH CLARY, DIRECTOR SELKIRK, MANITOBA

GIMLI MOVING & STORAGE

FAST FREIGHT AND EXPRESS TO WINNIPEG BEACH, GIMLI

** PACKING ** FURNITURE ** SHIPPING **

GOODS INSURED * ANYWHERE IN CANADA * RELIABLE SERVICE

Gimli Phone 642-5269

Winnipeg Phone 774-2259

The MART

HOUSES

For Sale: three-bedroom house, full plumbing, good location with garage and three lots. Phone: Fred Pidruchny, 44 Temple Ave., Wpg. Beach, 389-2850.

For Sale: 60 by 12 House Trailer, three-bedroom. Porch and skirting. Blue and white in colour. Can be purchased with or without lot. Phone: J.M. Bryson, 95-3 Ave., 642-8310.

For Sale: Mobile Home - two-bedroom, 12 x 56 Northlander 1967 model. Includes: fridge, stove, kitchen suite, washer, dryer, and lawn shed. Phone: 389-2812 Bill Stenbera.

For Sale or Rent-two-bedroom house, garage. Phone: 642-5008.

For Rent in Gimli: three-bedroom house, gas heated. Available June 1, 1971. For further information phone: 643-5318.

AUTOMOBILES

For Sale: 1969 Ford Cortina GT, like new, 17000 miles on 1600 CC engine. Fern green with black interior, full instrument panel with RPM gauge, dual braking system, two door model. Best offer - Phone: Cpl. Christie local 167 or 3J E. Evergreen, 642-7226.

For Sale: 1965 Acadian station wagon with V-8 engine. Phone: Jim McIntosh 389-5396 or Local 125.

MISCELLANEOUS

For Sale: one chesterfield and chair, one coffee table and end table, all in excellent condition. Phone: 642-5925.

For Sale: Moto Ski-Capri 300 cc-1968. Boys Jr. bicycle 18". Girls sidewalk bicycle. Antique Piano. 14 volume set from World Book - "The New Illustrated Medical and Health Encyclopedia". One punt. Tent 9 x 12, coleman stove, lantern and cooler. Baby feed or play table. Phone: H. Lachance 16 Kernsted Rd. 389-5349 or local 77.

WANTED: good home for a small house dog. Part dachshund and part corgi. Preferrably in the country. Affectionate and good with small children. Phone: 8296.

WANTED: Wooden high chair, good condition. Phone: 642-5259.

The Mart cont'd page 17

GIMLI HAPPENINGS

If your club or organization wishes to announce an upcoming event call or write the Base Information Officer, C.F.B. Gimli, Aspen Park, Manitoba or
PHONE: 642-5151-LOCAL 126r3

Every Wed. SNOW TRACKERS....RAMBLE
at 7:00 p.m. From Gimli Wharf
All Welcome

Every Thur. BINGO.....TWO JACKPOTS
8:30 p.m. Arborg Community Centre

Every Sat. SNOW-TRACKERS SAFETY &
at 1:00 p.m. SURVIVAL OUTING
Leave from B.C. Packers All Welcome

Sun. 7 Mar. MOVIE-Who's Been Sleep-
2000 hrs. ing in My Bed.....with
Dean Martin
Junior Ranks Mess

Sat. 13 Mar. DANCE to the 4-SHARPS
2100 hrs. Dress Casual
Junior Ranks Mess

Sat. 20 Mar. ST. PATRICK'S BAKE SALE
2:00 p.m. The Gimli Good Neighbours
at the Valgardson Bldg.
Centre Street, Gimli, Man.

Sun. 14 Mar. MOVIE-PT-109 with Cliff
2000 hrs. Robertson
Junior Ranks Mess

Fri. 19 Mar.DINING IN NIGHT...
WO & SGTS 1900 hrs.Cocktails
MESS 2000 hrs.Dinner
2200 hrs.Dancing

Fri. 19 Mar. CENTENNIAL DART TOURNEY
2000 hrs. Mixed Doubles Only
Gimli Legion, Gimli

Sun. 21 Mar. MOVIE-TRUE GRIT....with
2000 hrs. John Wayne
Junior Ranks Mess

Sat. 27 Mar.ROTARY SKATETHON....
2:00 p.m. Gimli ::::::::::::::: Arena

Sat. 27 Mar.DINING IN.....
2100 hrs. -----Retirement-----
----Close Out Party----
Music by Casanovas
Members Only - No Guests
Junior Ranks Mess

Sun. 28 Mar. MOVIE-HEROS OF TELEMAR
2000 hrs. with Kirk Douglas
Junior Ranks Mess

OFFICERS' WIVES CLUB

ATTEND OUR "SPRING FASHION SHOW"
on March 15, 1971 and see our club
members model their own creations.
Ladies from the House of Fabrics
will be in attendance to answer
your questions on fabric.

COCKTAILS - 7:30 - SHOW - 8:00 -
GUESTS 75¢

THE FRAMFARI X-WORD

RAOUL DAMIEN MBR S
E O O C E C I L E R A N E J R
J N L O S E U L E R O M G E E
E E N L M E E L I E I E I A A
A I U O A I L E L I C N S N L
N C C M R N L U U P D I A N E
E U I B A L D Y J N N E R E O
C L A E E N E V I E L R U E J
H G J T E L O A D E L E A E M
A H S U I U L N G A B E L R O
N E N D L A Q N M A R C R N D
T R O O O I A I N E S E Y E E
A V M R E N E R N L G T V S S
L E A I A M A N T O N I O T T
R L I S E B I T R I M R N N E

Listed below are the words that you will find hidden in the puzzle above. These words are spelled out in all directions - so look very carefully. By assembling the letters that remain, in order, you will find today's hidden words which will be published next week. This week's hidden words have five letters.

LES PRENOMS

ABEL	LAURA
ADELE	LEA
ALAIN	LEON
ANGELE	LISE
ANTONIO	LUC
BARNABE	LUCE
	LUCIEN
CECILE	
CHANTAL	MANON
COLOMBE	MARC
COME	MARIELLE
	MODESTE
	MONIQUE
DAMIEN	
DENIS	
DIANE	NOEMI
DONAT	
DORIS	ODILE
	OMER
ELOI	
ERIC	PIERRE
ERNEST	
ESTELLE	RAOUL
	REAL
GABRIEL	REGIS
GASTON	REINE
HERVE	REJEAN
	REMI
JEAN	ROLLAND
JEANNE	ROGER
JOEL	ROSE
JULES	
JULIE	YVAN
JULIEN	YVON

LAST WEEKS ANSWER: The Beard Growing Contest.