



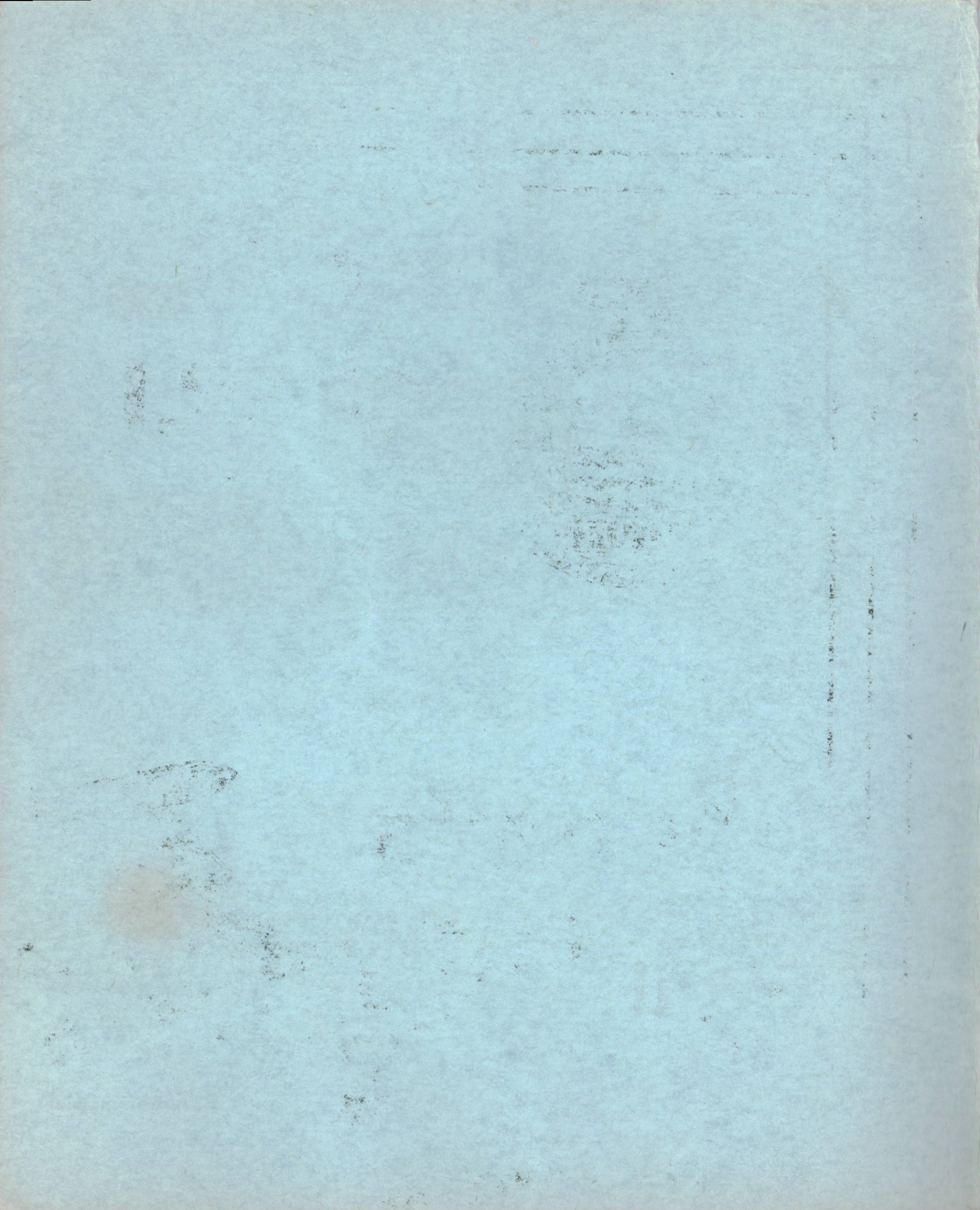
CFB GIMLI

Welcomes

You



APRIL 1970





Welcome to Canadian Forces Base Gimli

This booklet has been prepared to provide you with guidance in locating essential services and offices upon arrival. The base is small by modern-day standards — nevertheless, it provides all facilities necessary for your convenience and enjoyment.

Whether you are a student, or are arriving on posting or temporary duty, we welcome you and wish you a pleasant and mutually rewarding stay.

Base Commander

Gimli — Home of 1 FTS



Silver Star (T-33) of Canadian Forces Base Gimli

History of CFB Gimli

Canadian Forces Base Gimli was first opened in 1943 as a pilot training unit under the British Commonwealth Air Training Plan. From that date to the end of World War II, No. 18 Service Flying Training School Gimli trained 622 pilots, many of whom brought distinction to the RCAF in the various theatres of war.

During the immediate post-war years, Gimli was a Reserve Equipment Maintenance Satellite. Then, in 1950, as a result of increased world tension, Gimli

was re-activated as a pilot training unit, flying the Harvard trainer. Before long Gimli was officially designated No. 3 Advanced Flying School, utilizing the Silver Star (T-33) advanced jet trainer. In 1965, with the advent of the Tutor basic jet trainer, Gimli was re-designated No. 1 Flying Training School. As a result of the reorganization of Training Command in 1969, CFB Gimli has again become solely an advanced training school, No. 1 FTS, and is the home of the Silver Star.

Honouring Canada's commitments to NATO, Gimli has trained not only Canadian pilots, but also several hundred pilots from NATO countries.

The training establishment at CFB Gimli is constantly being modernized and updated to meet the requirements of Training Command. The availability of air space for training and the generally suitable climate make CFB Gimli of considerable value as a pilot training site.



'T-Birds' on the Line

Gimli Community

The town of Gimli is located about 60 miles north of Winnipeg on the west shore of Lake Winnipeg in south central Manitoba. The first settlers in the area were 285 Icelandic immigrants who arrived by barge from Winnipeg in 1875. The community was augmented the next year with the arrival of 1,200 more Icelandic



Gimli Viking

pioneers direct from Iceland. This made Gimli the largest Icelandic community in the world outside of Iceland. Numerous Polish and Ukrainian settlers also pioneered the area, all seeking that 'place of peace' which is the translation of the Icelandic word 'Gimli'.

Today, Gimli has a well developed industry of mixed farming, fishing, fur farming, and a large distillery complex. The income of the area is further augmented by the thousands of tourists who seek the local beaches each summer.

Housing

Directly attached to the base are 193 Steelox Permanent Married Quarters with an additional 20 lots available to trailer dwellers. Also under base control is a large apartment and town house complex containing 150 various-sized units located on the north-west edge of the town of Gimli, about two miles from the base. The availability of suitable downtown housing depends on the season and can at times be difficult to obtain. The town does, however, accommodate approximately 240 service families.



Evergreen Development

Schooling

The Goulding School is located in the main PMQ area and offers Kindergarten to grade 8. There are instructional areas (two-classroom size) for grades 2 to 4. Grades 5 to 8 are fully departmentalized. Conversational French is offered in all grades. In Manitoba there is continuous testing but no final examinations, and the approach is one of diagnosis and prescription. High school students are provided with bus transportation to the Gimli Composite High School. Dependent children living in the Evergreen BLHU or in Gimli attend schools in the town of Gimli.

Base Facilities



CFB Gimli Golf Course

RECREATION CENTRE

Gimli has a well-equipped recreation centre that supports all the standard indoor and outdoor sports. Within the confines of the building are an indoor swimming pool, weight lifting room with judo mat, and a sauna bath. Associated with the recreation centre operation are facilities for track and field, fastball, and football.



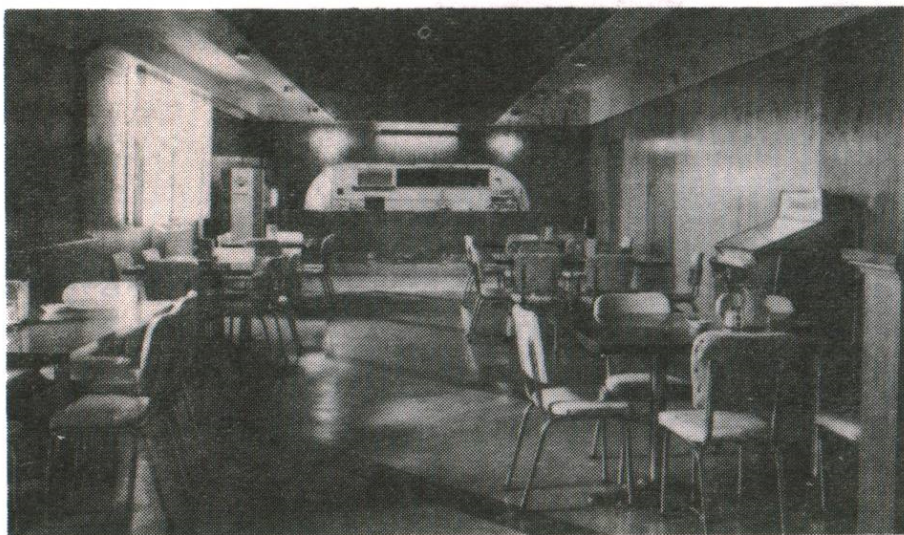
Golf and Curling Club Lounge

TENNIS COURT

Four enclosed asphalt tennis courts are located just south of the Officers' Mess.

BOWLING ALLEY

A four-lane bowling alley with automatic pin setters is located within the Recreation Centre. It operates throughout the winter months.



Snack Bar

ASPEN PARK GOLF AND CURLING CLUB

The Golf and Curling Club includes a 2,900 yard, nine-hole golf course and a four-sheet curling rink, both located within the base perimeter.

Shared by golfers and curlers as a clubhouse are a nicely-decorated bar, lounge, and snack bar attached to the curling rink.

AUTO HOBBY SHOP

An auto club and service station are located on the base providing working space for the do-it-yourselfer, oil and gasoline sales, and complete purchasing facilities.

WOODWORKING HOBBY SHOP

A well-equipped hobby shop is available on the base to the wood-working hobbyist.

FLYING CLUB

A fully active flying club is available to the casual flyer. It also offers flying instruction to private and commercial categories on wheels, operating three Cessna 150 two-place aircraft. The club is a member of the Royal Canadian Flying Club Association.

THEATRE

A 400-seat theatre is located just inside the main gate, offering three films a week, including a matinee Saturday afternoon. Canteen facilities are available within the theatre.

CREDIT UNION

The Aspen Park Credit Union, with assets of \$574,000, is located in building 20 beside the base theatre.

BASE NEWSPAPER

The 'Framfari', the base weekly newspaper, provides around-the-base news as well as local function and business advertisements.

SNACK BAR

A nicely decorated snack bar is located in the Recreation Centre providing the usual beverages and light lunches. The Snack Bar is open daily.

BASE EXCHANGE

Also located in the Recreation Centre is the Base Exchange. It carries a wide range of goods, including personal accessories, clothing, gift items, and electrical appliances. It also provides complete catalogue-ordering facilities.



Downtown Gimli



Downtown Shopping

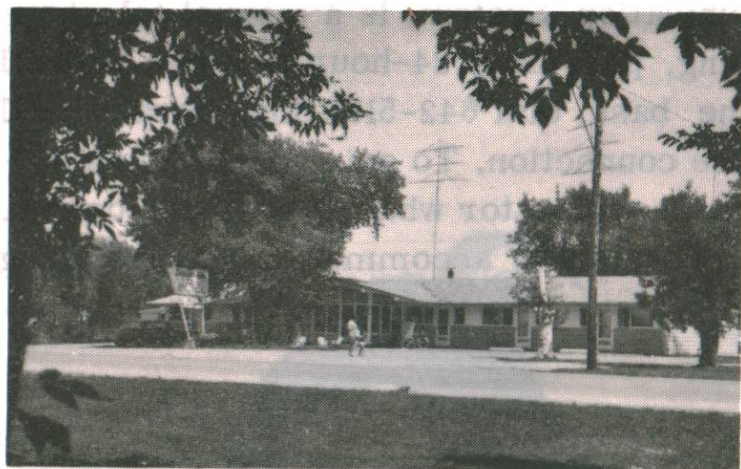
ORGANIZED CLUBS

Additional organized clubs on the active list are: Judo, Drama, Photo, Rod and Gun, Scuba, Skeet, and Archery Clubs.

In the Community

The community itself provides a fully adequate shopping area as well as temporary accommodation and an array of recreation facilities. There is a relatively large downtown business centre with several grocery and hardware stores, etc., and all the garages and service stations anyone should require. For temporary accommodation needs the town provides three all-season motels and one hotel, two of which are licensed and offer entertainment.

Additional facilities available are: a modern well-stocked library, a theatre, hockey arena, and curling club. Three good nine-hole golf courses can be found nearby, in addition to the one on the base, as well as miles of sandy beaches. The surrounding area provides excellent opportunities for hunting, fishing, and boating.

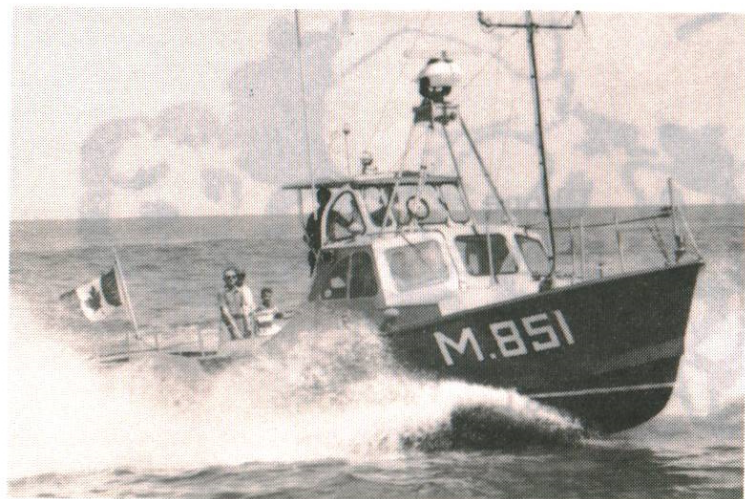


Temporary Accommodation



Gimli Beach

It should also be noted that Gimli is only about 60 miles north of Winnipeg, which has a population of nearly half a million and all the facilities a city of that size can provide.



CFB Gimli
Rescue Boat



Polo Park Shopping Plaza
in Winnipeg

RADIO AND TELEVISION STATIONS

CBW (Winnipeg) 990 KHZ
 CKRC (Winnipeg) 630 KHZ
 CJOB (Winnipeg) 680 KHZ
 CKY (Winnipeg) 580 KHZ
 CFRW (Winnipeg) 1470 KHZ

CKSB (French Speaking) 1050 KHZ
 CBWT (Winnipeg) Channel 6
 CJAY (Winnipeg) Channel 7
 KCND (Pembina, USA) Channel 12
 CBWFT (French Speaking) Channel 3

General Information

TELEPHONE SYSTEM

The heart of the CFB Gimli Communication System is a manual telephone exchange located in the Headquarters building, providing 24-hour service. To call any number on the base from outside the base, dial 642-5151: the operator will request the number you desire and make the connection. To gain access to an outside line from within the base, simply inform the operator what number you desire. A direct-line connection with Winnipeg is provided to accommodate military long distance calls.

REPORTING-IN PROCEDURES

Week-days - Everyone should report, in uniform, to the Base Orderly Room located in the Headquarters Building.

Week-ends - Contact the Orderly Officer, Orderly Sergeant, or Orderly Corporal, as appropriate.

BASE SERVICES

	<u>Building Number</u>	<u>Phone Number</u>
Base Orderly Room	1	34
Pay Accounts	1	131
Housing Officer	1	7
Clothing Stores	61	129
Base Hospital	17	104
Military Police	27	18
1 FTS Orderly Room	25	27
Duty Air Traffic Controller	25	19
Flight Planning	25	78
Meteorological Section	25	20



HAPPINESS IS

GIMLI?

