



# Framfari *dup*

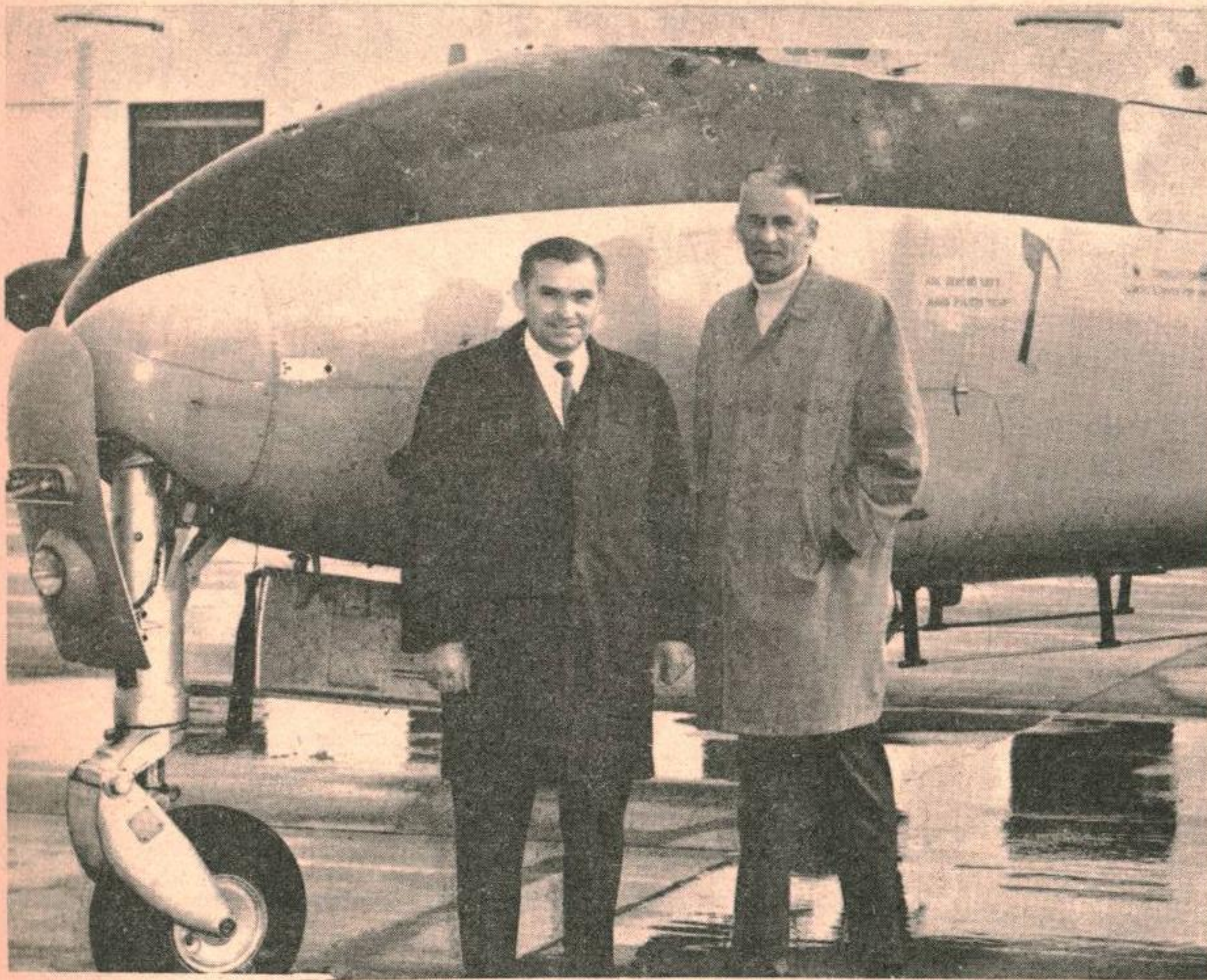


VOLUME 1 NUMBER 37

C.F.B. GIMLI, ASPEN PARK, MANITOBA

FRIDAY OCTOBER 16, 1970

## Saunders is Moving in



CF Photo

SAUNDERS BEGINS MOVING INTO GIMLI.....Colonel J.F. Dunlop, base commander of Canadian Forces Base Gimli, Manitoba and Major R.A. Holden the base administrative officer, greeted Saunders Aircraft Company officials on their arrival at the base over the weekend. Mr. Reg Kersey (right) vice president and Mr. Stan Zybd (left) production manager, arrived in one of the company's de Havilland Heron aircraft to supervise initial production operation at Gimli.

Work will begin immediately on the production of a Saunders ST-27 twin engine commuter aircraft, however, at present only a skeleton staff will be involved. Over the next several months the Saunders operation will step up and by September 1971 the company will have all their Montreal based operation moved to Gimli.

The weekend arrival opens a new page of history for CFB Gimli which has been a jet training base since June 1953. The No. 1 Canadian Forces Flying Training School, located at Gimli and responsible for the advanced flying training of all Canadian Forces undergraduate pilots, is scheduled to move to Cold Lake, Alberta prior to the closure of the base, set for 1 September 1971.

## Bilingual Helicopter Squadron

OTTAWA (CFP)--Effective September 18, 430 Tactical Helicopter Squadron was redesignated a French language unit.

This new unit will be based at Valcartier, Quebec and will be known as 430E Escadrille Tactique d'Helicopteres - short form 430E ETAH.

The redesignated squadron is one of six tactical aviation units now being formed to support Mobile Command operations.

The squadron will have 10 OH-58A light observation helicopters and six utility tactical transport helicopters which will be delivered next year. 430E ETAH will consist of 30 officers and 79 other ranks.

Supporting the Fifth Combat Group in Valcartier, the squadron will be responsible for visual observation, target acquisition and adjustment of fire, armed reconnaissance, command and control, aerial photography and troop and cargo transport.

## PAY STUDY AGAIN ?

Studies are continuing on a joint basis between this department and treasury board with a view to resolving an appropriate salary adjustment for the remainder of the force effective 1 October 1970. It is expected that an increase will be awarded but the amount and date of approval cannot be given with an degree of accuracy at this time.

The study of hazard and environmental allowances has also been the subject of detailed discussions with the treasury board. Any adjustments in the allowances will be effective 1 October 1970. Expected that salary and allowance adjustments will be announced concurrently.

### Card of Thanks

Dear Sir:

The First Aspen Park Air Ranger Flight wishes to thank Mrs. Bell-Chambers and Mrs. Younker for acting as our chaperons in the Co-Ed Camp this past summer. We also wish to thank Mr. Dunk who served as the Ventures' chaperon. Despite starvation techniques you all held out and we only hope that you had as much fun as we did!

Thank you.

Yours truly,  
Diane Rogers  
Secretary of

FIRST ASPEN PARK RANGER FLIGHT

### Walkathon

There are still many pledges left if anyone wants to walk for the Retarded Children's Association. The 10-mile walk starts on Saturday October 17 at 10:00 a.m. with registration in the Gimli Park. Be sure to wear appropriate clothing and shoes. Bring your own lunch -- freshie and ice cream will be provided at Camp Morton. Pledges are conveniently located in PMQ's at Mrs. Hilton's house; in the Evergreen at Mrs. Roger's house; south of Centre Street at Mrs. Pineau's house; and north of Centre Street at Mrs. Stacey's house. All monies received will be used locally to help our mentally retarded adults who are attending workshops in other areas. SEE YOU AT THE PARK ON SATURDAY.

#### LIBRARY HOURS

MONDAY	- 1300-1700 & 1900-2100
TUESDAY	- 1300-1700 & 1900-2100
WEDNESDAY	- 1300-1700 & 1900-2100
THURSDAY	- 1300-1700 & 1900-2100
FRIDAY	- C L O S E D
SATURDAY	- C L O S E D
SUNDAY	- 1400-1600



GIMLI OFFICER POSTED TO WINNIPEG ..... Major Keith H. Ennis, 39, the base construction engineering officer at Canadian Forces Base Gimli, Manitoba leaves Gimli effective 15 October 1970, to assume the duties of senior staff officer of Military Engineering Training at Training Command Headquarters, Winnipeg, Manitoba. In his new position, Maj. Ennis will be responsible for the military engineering training of associated officers and mens' trades. Maj. Ennis has an extensive background in his field, having most recently completed two tours at Canadian Forces Headquarters, Ottawa, Ontario, between which he completed 18 months of training at the Royal Military College of Science in England. Maj. Ennis arrived at CFB Gimli in July 1969.

(CF Photo)

### ARMS SAFETY

In one year Manitoba had 31 fire-arm accidents. Nineteen of these were caused by shooters 21 years of age and under; 14 by shooters 16 and under. Twenty were inflicted by .22" rifles - 2 of which were fatal. In 22 cases the victim was within 10 yards or less of the muzzle of the gun. Nine of these accidents were caused by licensed hunters during hunting season; one of which was fatal.

Here are some examples of needless accidents:

1. Victim retrieved duck with butt of loaded shotgun. Trigger caught on reed; weapon discharged striking victim in upper arm and shoulder.
2. Victim was carrying loaded .22" rifle into the house. He tripped on a rubber mat and fell; gun discharged wounding him in the stomach.
3. Shooter and victim dragging buck by the horns, shooter bent down to get fresh grip on horns. Gun which was being carried by sling over shoulder partly slipped forward, trigger caught on bush and gun discharged killing partner.
4. Friend put loaded rifle into vehicle. Victim was hit while removing what he thought was an unloaded rifle from the vehicle.
5. Shooter swung on flying bird and fired when bird was between him and victim, inflicting wounds to forehead, jaw and arm of victim.

#### DON'T BE NEXT

### APACHE Rumour of the Week

Any 6 Bandits  
Can Beat Up  
An Apache...

But Any 5 Can't.

FRAMFARI is published weekly for distribution on Friday. Opinions expressed are those of the writers and do not necessarily reflect Official Canadian Forces Policy. The Editor reserves the right to edit all copy and advertising to suit paper policy. All correspondence should be addressed to: Editor, Framfari

Aspen Park, Manitoba  
Phone: 642-5151 - L126R2

Deadline for all copy: 2:00 pm Monday

#### PUBLISHER

....Col. J.F. Dunlop  
Base Commander

#### BUS. & PROD. MGR.

....Maj. A.C. Platz -L57

#### EDITOR

....J.F. Bennett -L154

#### SPORTS EDITOR

....C. Potter -L37

#### WOMEN'S EDITOR

....Mrs. Betty Bennett -7964

#### ADVERTISING MANAGER

.... K.C. Birch -L 37

### Kardy's HARDWARE

Your FIRST STOP STORE for

HOUSEWARE-GIFTWARE-PAINT

642-8838

# Facts about Opiates

## WHAT IS KNOWN ABOUT OPIATES?

Opium - from the Greek word "opion" meaning poppy juice, is an analgesic (pain reliever) which is obtained from the oriental poppy, *Papaver somniferum*. Opium and its products (such as morphine and codeine) and its derivatives (such as heroin and dilaudid) form the group of drugs called "opiates".

The opiates are highly effective in the treatment of short-term acute pain such as that resulting from surgery, fractures, or burns and that occurring in the later stages of terminal illnesses such as cancer.

Drugs such as meperidine (Demerol) and methadone are synthetic pain relievers - also very effective - that were introduced in the hope that they would be non-addictive. They are, however, just as habit-forming as the opiates and are similarly capable of producing tolerance and physical dependence.

### --Appearance:

The opiates are powders of several different colours. They are usually seen in the form of capsules or tablets. They are also available in syrups, ampoules, suppositories or elixirs.

### --Active Ingredients:

The pharmacologically active constituents of opium are alkaloids. There are over twenty of these, but only two - morphine and codeine - are in widespread clinical use. (The synthetics meperidine and methadone are also widely used in medicine).

### --Methods of Using:

Opium may be eaten or smoked. The opiates are usually injected but may be sniffed or taken orally or rectally.

### --Type of Action:

Opiates briefly stimulate the higher centre of the brain, then depress activity of the central nervous system. As the dose is increased, respiratory depression becomes progressively more marked; death may occur from respiratory paralysis. The experience of pain involves two distinct aspects: there is the original sensation of pain and there is the reaction to that pain. Used as analgesics, the opiates do not appear to reduce a patient's perception of pain but rather to alter his reaction to it.

### --Short-term Effects:

A therapeutic dose of an opiate, used for relief from pain, produces a state of contentment, detachment from concern and freedom from distressing emotion. If the same dose is taken in the absence

of pain, the person may suffer from restlessness and discomfort. A larger dose will cause euphoria (a heightened sense of well-being). Sometimes nausea and vomiting also occur. With moderately high doses, mental and physical activity is impaired, the body feels warm, the extremities heavy and the mouth dry. Sleep soon follows. In very large doses the person cannot be roused, his pupils are contracted to pinpoints and his skin is cold, moist and bluish. Other effects include flaccid skeletal muscles, shallow breathing, falling blood pressure and shock; there is also some danger that the tongue may fall backward and block the airway.

### --Duration of Action:

This depends on the opiate used, the amount taken and the degree of established tolerance and dependence of the individual. A therapeutic dose lasts about three to four hours.

### --Hazards:

Risks of frequent and heavy use of opiates include constipation, loss of appetite, serious loss of weight and malnutrition. Hepatitis, tetanus and other infections often occur as a result of using unsterilized needles, abscesses develop. The walls of the veins break down from repeated puncturing. Permanent scar tissue is formed.

The opiates induce physical and psychological dependence with unusual rapidity. Tolerance builds up rapidly - larger doses are required to produce the same effect. Withdrawal from these drugs after large doses causes severe physical reactions. Some of the withdrawal symptoms are nervousness, anxiety, sleeplessness, running nose and eyes, sweating, enlargement of the pupils, muscle twitching, severe aches of the back and legs, hot and cold flashes, vomiting and diarrhea and increased breathing rate, blood pressure and temperature. Abrupt and complete withdrawal occasionally results in death.

Opiates induce psychological dependence that is very hard to treat. People who have been withdrawn from physical dependence on an in-patient basis typically become addicted once again as soon as they return to an environment similar to the one in which dependence developed. There is, however, a tendency to stop taking opiates as dependent persons grow older.

Another hazard is criminality. As tolerance increases, more of the drug (most often heroin) is needed to avoid withdrawal symptoms. To

support the cost of the habit, it is usually necessary to turn to theft or prostitution.

Accidental deaths occur when users misjudge dosages. Because people who sell opiates on the illegal market typically "cut" the drug with some other substance to increase the bulk, it is hard for users to judge dosages accurately and accidental overdoses - sometimes lethal - are not unknown.

### --Treatment:

Medical treatment is indicated for severe withdrawal states and for addiction-related illnesses. Methods of treating opiate dependence itself have included imprisonment, hospitalization, outpatient programmes, programmes in communities of former addicts such as Synanon and Daytop and individualized treatment methods such as the methadone maintenance programme in which another narcotic is substituted which does not prevent the addict from leading a normal life. Although some of these methods appear more promising than others, there seems to be no one treatment which is appropriate for all patients.

## WHAT IS NOT KNOWN ABOUT OPIATES?

### --Which Method of Treatment is Most Effective for a Particular Patient?

Opiate dependence appears to be so individual that the results of specific treatment methods cannot be predicted with much accuracy.

### WHO USES OPIATES? WHY?

Persons dependent on opiates and synthetic analgesics are often grouped in three main categories: "Medical", "professional" and "criminal" or "street".

--The medical addict is a person who has some medical condition on which addiction has been superimposed, or who became addicted through medical treatment.

--The professional addict is an opiate-dependent person who is a member of the medical profession or a related profession: some pharmacists, nurses and veterinarians are included in this group.

--The street or criminal addict category includes people who are known to have a criminal background or associations, even though they may have no criminal record. The Department of National Health and Welfare reports that in 1968 there were 3,459 of these addicts in Can-

**Opiates - Cont**

ada, as compared with 200 medical and 145 professional addicts.

Most street addicts begin using opiates for the extremely pleasurable "high" or for escape from problems, especially those produced by oppressive social conditions, or for both reasons. People continue using opiates in order to avoid the extremely unpleasant symptoms of withdrawal.

**OPIATES AND THE LAW**

--Except under authorization of the Minister of National Health and Welfare, possession of opiates (except for restricted amounts of codeine) is an offence under the federal Narcotic Control Act. Cultivation of the opium poppy is also such an offence. Hospitals, physicians and pharmacists and veterinarians are permitted to keep supplies of opiates. Patients may obtain them only on prescription. (Heroin, however, is no longer imported into Canada, even for use in medical practice).

--In Canada, tablets containing not more than one-eighth grain of codeine phosphate and liquids containing not more than one-third grain of codeine phosphate per fluid ounce may be sold legally without a prescription if they contain at least two other medicinal ingredients in certain quantities and if they are clearly labelled in a particular way as containing codeine.

--Trafficking in opiates is forbidden. (Trafficking includes selling, giving, sending, transportation and distributing). Possession for the purpose of trafficking is also an offence. Except with proper authorization, importing and exporting are illegal.

--Unlawful possession or cultivation can result in a prison sentence of up to seven years.

--Importing or exporting opiates without proper authorization calls for a minimum sentence of seven years. The maximum is life imprisonment.

--Trafficking in opiates, or possession for the purpose of trafficking, can result in sentences up to life imprisonment.

## FINLEY TV

### — Service —

26 6th Ave, Gimli

642-5386

## CENTRAL BAKERY

BAKED FRESH DAILY

Sliced Bread

Seed Bread  
IRISH & RYE

Pan Bread

### Homemade Breads, Buns, & Cakes

### Imported Chocolates & Cheeses

HOT PIZZA TO GO - Baked to your order in 15 min.

## JR RANKS MESS ENTERTAINMENT

SAT 17 OCT ' DANCE AND BINGO '

BINGO STARTS 20:00 HRS Sponsored by the WIVE'S CLUB

DANCE STARTS 22:00 HRS TO 02:00 HRS MEN OF NOTE

- Dress CASUAL

- Door Prize

Limited Subsidized Drinks From 22:00 Hrs TO MEMBERS ONLY

SAT 31 OCT 2100Hrs DANCE TO 'THE FOUR SHARPS'

- Dress Restricted Jr Costume - Admission \$1.00 TO Non-members

- Door Prizes

- Limited Subsidized Drinks From 2030 Hrs

## GEORGE'S TV/70

Bus. 642-8138

Res. 642-8224

## HAVING A FOOTBALL SPECIAL SALE

*Channel Master Transistorized  
TV Antenna, Booster Amps  
for TV & FM*

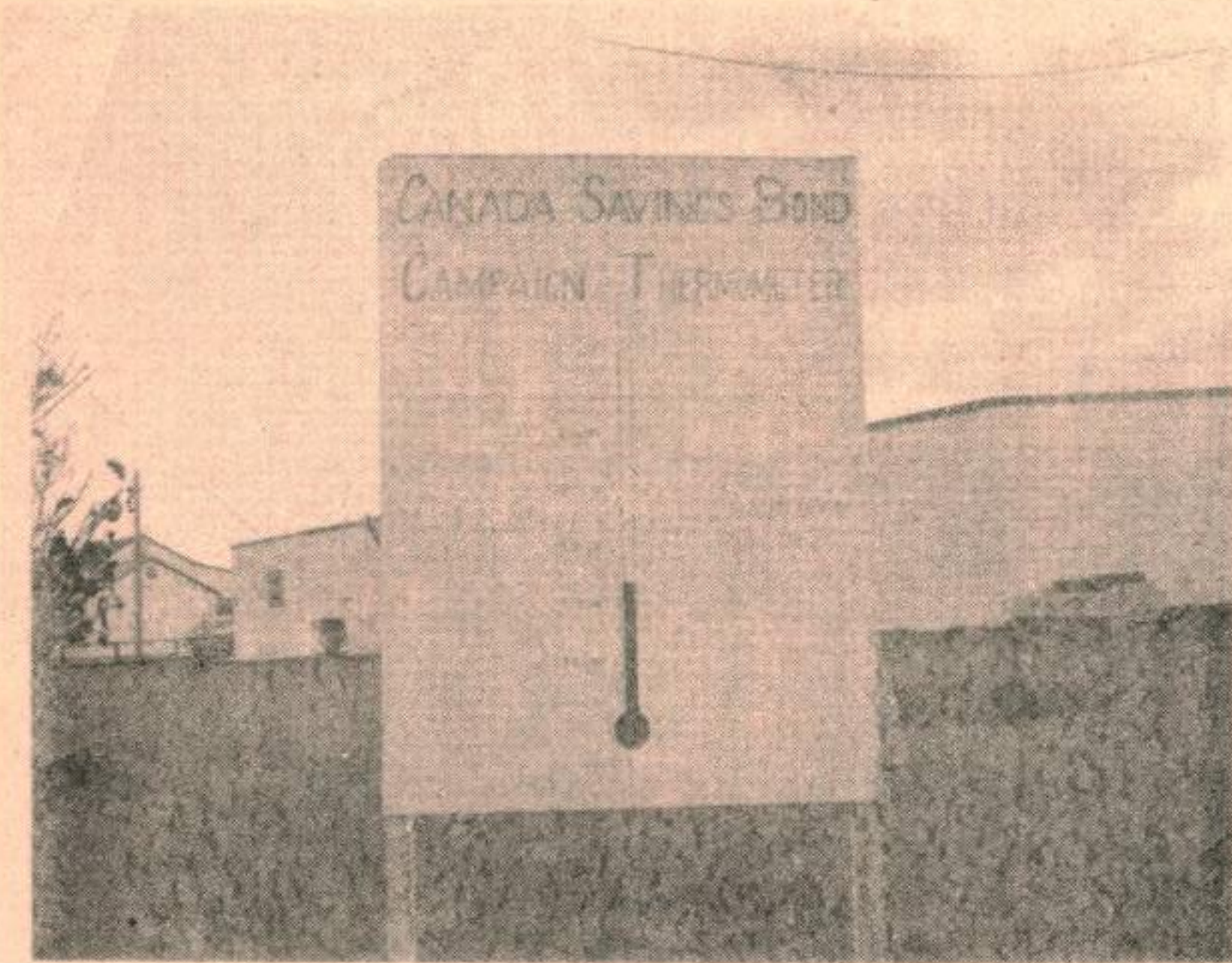
*Including Power Supply*

*Installation Extra*

Reg. 34.95

SPECIAL 26.95

Fri. and Sat. 10a.m. to 6 p.m.



### CANADA SAVINGS BONDS

While most thermometers in Gimli are going down, there is one that is going up. The "TEMPERATURE" it is trying to reach is \$122,200, CFB Gimli's quota in this year's Canada Savings Bond Campaign. Last year's goal was \$114,000 and it was exceeded by 51%. This year's sales to date are \$50,100, as of 13 October 1970.

A point of interest to all Gimli Bond purchasers is that when a purchaser changes his address, the change in mailing instructions should be directed to Division Chief, Department of Supply and Services, Securities Deposit Division, Room 145, East Block, Ottawa, Ontario.

## Bought any Bonds Yet?

Following is an updated list of Section Canvassers:

Mr.	J.G. Malcolmson	-	all base civilian employees
Sgt	J.R. Hurens	-	base HQ and military police
Cpl	J.L. Gramlick	-	GTS building
Capt	J.P. Auclair	-	CE section and fire hall
Lt	T.W. Collins	-	"B" flight
Sgt	H.E. Truax	-	No. 2 hangar servicing
Capt	C.W. Potter	-	"A" flight
Capt	J.A. Ruckpaul	-	"C" flight
WO	A.J. Knapik	-	No. 5 hangar
Lt	M. Rafferty	-	No. 4 hangar
Lt	R.W. Malcolm	-	Supply building
CWO	G. Roemer	-	Tower and radar section
Capt	T.C. Ringland	-	Dental clinic and hospital
Lt.	B. Ker	-	Recreation Centre
Cpl	J.L. McIntosh	-	OFT building
Lt	J. Anslow	-	Central warehouse
Sgt	A.H. Bass	-	Food services
Sgt	D.M. Galbraith	-	Avionics section
Capt	B. Dowler	-	Miscellaneous sections

Anyone with any questions concerning the Bond campaign are urged to contact their canvasser or Capt. B. Dowler at local 36.

## EATONS

CATALOGUE SALES OFFICE

**FASTEST  
SERVICE**

IN GIMLI

Phone

**642-5158**

Catalogues available

CATALOGUE

& RETAIL SERVICE

## GIMLI HOTEL (The Whitehouse)

OVERNIGHT ACCOMODATION  
REASONABLE RATES

*ENTERTAINMENT  
WED TO SAT*

**N SHUCKETT B.A. LL.B**

BARRISTER AT LAW

GIMLI HOTEL Every Thur 9 to 12 AM

Ph 642-5276

WINNIPEG RES

Ph 474-4093

NOW IN GIMLI

## ELECTROLYSIS

**HAVE UNWANTED HAIR REMOVED FOREVER!  
IT'S FAST, SAFE AND PAINLESS. HAIR CAN NOW BE  
REMOVED FROM YOUR FACE, UNDERARMS AND LEGS,  
ETC.**

**FREE CONSULTATIONS PH 642-7215**



WORLD WAR II ACES DONATE TO RCAF FUND

WINNIPEG(CFP)--Lieutenant General Adolph Galland (right) war-time chief of the German fighter forces and Group Captain Douglas Bader (centre) the famous legless ace of World War II, made donations to the Hall of Canadian Aviation History and RCAF Memorial during the Commonwealth Aircrew

Reunion held here September 24-27. Accepting the cheques (above left) was Lieutenant General E.M. Reyno, the deputy commander of NORAD and one of the last two Battle of Britian pilots still serving with the Canadian Armed Forces.

(CF Photo)


DANCES, BANQUETS, PARTIES, WEDDINGS



*Men of Note*  
*Orchestra*  
Jim Glover,  
Gimli - 642-8167 or Loc 143

**ASTRA**  
Your Financial Centre

NO HIDDEN CHARGES



NO PENALTIES

- ATTRACTIVE SAVINGS PLANS (Doubled in event of Death)
- TERM DEPOSIT CERTIFICATES (no penalty for premature withdrawal)
- FREE CHEQUING FACILITIES
- CHARTER FLIGHTS
- LOW COST LOANS
- INTERNATIONAL CREDIT CARDS (including Travellers Cheques)
- RETURN OF PROFIT TO MEMBERS

**ASTRA CREDIT UNION**

# VIKING PHARMACY

PHARMACISTS: Ernest Stefanson, Keith Eyolfson

PHONE 642-5504 Emergency 642-8359/642-5900 Use your GM charge card WE DELIVER

<p>MODESS Regular 12's</p> <p style="text-align: center;">REG 53¢</p> <p style="text-align: center;">SPEC. 49¢</p>	<p>CREST Toothpaste</p> <p style="text-align: center;">FAMILY SIZE REG 1.29</p> <p style="text-align: center;">SPEC. 1.09</p>	<p>NOXEMA Deodorant Spray</p> <p style="text-align: center;">5 OZ</p> <p style="text-align: center;">SPEC. 99¢</p>
<p>BUFFERINS 100's</p> <p style="text-align: center;">REG \$1.69</p> <p style="text-align: center;">SPEC. \$1.29</p>	<p>WOODBURY Castile Shampoo</p> <p style="text-align: right;">150Z.</p> <p style="text-align: center;">REG \$1.59</p> <p style="text-align: center;">SPEC. 99¢</p>	<p>COLGATE 100 Mouthwash</p> <p style="text-align: center;">24 FL OZ REG 1.98</p> <p style="text-align: center;">SPEC. \$1.69</p>

our winter hours

FRIDAY 9AM - 9PM

SATURDAY 9AM - 6PM

SUN, MON 12NOON - 6PM

TUES, WED, THURS 9AM - 6PM

**SHOP AT THE A.R.P. VALUE CENTRE NEAREST TO YOU**

**VIKING PHARMACY**  
GIMLI, MANITOBA

# YOUTH BOWLING

# LODGING RATES BOOSTED

Senior Bowling as of October 10/70

Teams	Total Points	Standing
1	17	1
2	7	4
3	9	3
4	11	2
H/S for year: Penttie Karkanian-334		
	Gail Cormack	-289
H/T for year: Steven Gemmell -619		
	Gail Cormack	-631
Average for		
year:	Steven Gemmell	-206
	Gail Cormack	-198
Bowlers of		
the week:	Steven Gemmell	-619
	Gail Cormack	-631

Batam Bowling as of October 9/70

Teams	Total Points	Standing
1	14	3
2	13	4
3	16	1
4	11	7
5	10	8
6	12	6
7	15	2
8	13	4
H/S for year: Donald L'Arrivee -187		
	Janice Brass	-230
H/D for year: Donald L'Arrivee -326		
	Janice Brass	-414
Average for		
year:	Bradley Shears	-161
	Janice Brass	-167
Bowlers of		
the week:	Donald L'Arrivee	-326
	Janice Brass	-414

**IF YOU CAN'T SEE IT DON'T SHOOT AT  
IT BE SAFE, NOT SORRY!**

OTTAWA(CFP)--Servicemen traveling on temporary duty now receive increased lodging rates according to canforgen 214 of October 1. Effective September 1, the new rates are as follows:

	In Canada	Outside Canada
Officers:	\$ 14.00	\$ 17.00
Other Ranks:	11.00	14.00

If the rates listed above are considered inequitable, authorities may approve higher rates not exceeding:

	In Canada	Outside Canada
All Ranks:	\$ 18.50	\$ 25.00

If a serviceman is required to attend a convention at a hotel in Canada that normally offers a guaranteed rate, but because of his attendance at the convention is not allowed the guaranteed rate, he may be reimbursed the actual costs up to a daily rate of \$20.00.

If you have a claim not already completed, it may be considered in accordance with the new regulations. CFAO 209-13 will be amended.

## TAYLOR

## PHARMACY

YOUR A. R. P. VALUE CENTRE

CENTRE AND SIXTH GIMLI

<b>REVLON Aquamarine Shampoo</b> LTD TIME OFFER LGE 22 OZ SIZE <b>SPEC. \$1.99</b>	<b>MACLEAN'S Toothpaste</b> SUPER SIZE <b>SPEC. \$1.19</b>
<b>ASSORTED BAG of CANDY</b> FOR HALLOWE'EN <b>SPEC. 89¢</b>	<b>PREPARATION H SUPPS.</b> PKG OF 24 <b>SPEC. \$2.29</b>
-Pharmacists Pat and Norm Taylor Bus. phone 642-7470 Evenings 642-5810	<b>DRISTAN Nasal Spray</b> <b>SPEC. 99¢</b>

## GIMLI TAILOR

*SUITS*  
and  
*UNIFORMS*

Made to Measure  
four to six weeks

## Perth's

CARRY & SAVE STORE

For house pick-up PHONE PERTH'S 642-5326

## PMQ's EVERGREEN

## TOWN OF GIMLI

81 1st Ave.

## PICKUP

## MON WED

## FRIDAY

# GIMLI FIGURE SKATING CLUB

The very first lessons in figure skating get underway, Friday, October 16 at 4:00 p.m. The registration so far is over 70 and we have room for many more. The skating instructress is Noreen Elliott who will be coming up from Winnipeg every Friday. The Figure Skating Club will have extra ice time for practises every Sunday night from 6:00 to 8:00 p.m. Do make use of this time or else we shall lose it.

An executive meeting was held at Marion Sigmundson's home last Monday evening to discuss activities for the year. A note shall be going home with each student this Friday explaining the rules of figure skating. Also, if anyone is interested in private figure skating lessons, extra time shall be allotted for this. Dependent upon the number who wish private lessons, this will determine the extra fee involved. If anyone is interested in private lessons please contact Marion Sig-

mundson for further information.

The merits of "Power Skating" were discussed and what benefit this would have for figure skaters and hockey players. Power skating involves interested people teaching kids "how to skate" -- e.g. how to stroke, stop and turn properly. This is being looked into further and could be an invaluable service to both boys and girls. It was also noted at our meeting that Anna Stevens is the figure skating representative on the recreation board.

**WANTED.....WANTED**

Any person who is interested in power skating and willing to spend some time teaching kids how to skate properly are requested to submit their services. Both boys and girls from the figure skating club and hockey clubs could benefit from learning how to stroke, stop and turn properly. For further information please contact Doug Smith at ... 642-8221.

# Consumers' News and Views

CONSUMERS' NEWS AND VIEWS

by

CONSUMERS' ASSOCIATION OF CANADA

This is somewhat a round-up of information that is available for the asking by writing Consumers' Association of Canada, 100 Gloucester St., Ottawa 4.

The association frequently reprints buying guides that are published in its bi-monthly magazine, Canadian Consumer. These are made available to the public, free, in single copies only. They deal with many subjects, all pretty basic and useful.

One of considerable current interest is a guide on buying equipment for the young hockey player in your home. Ask for: "Hockey equipment reprint."

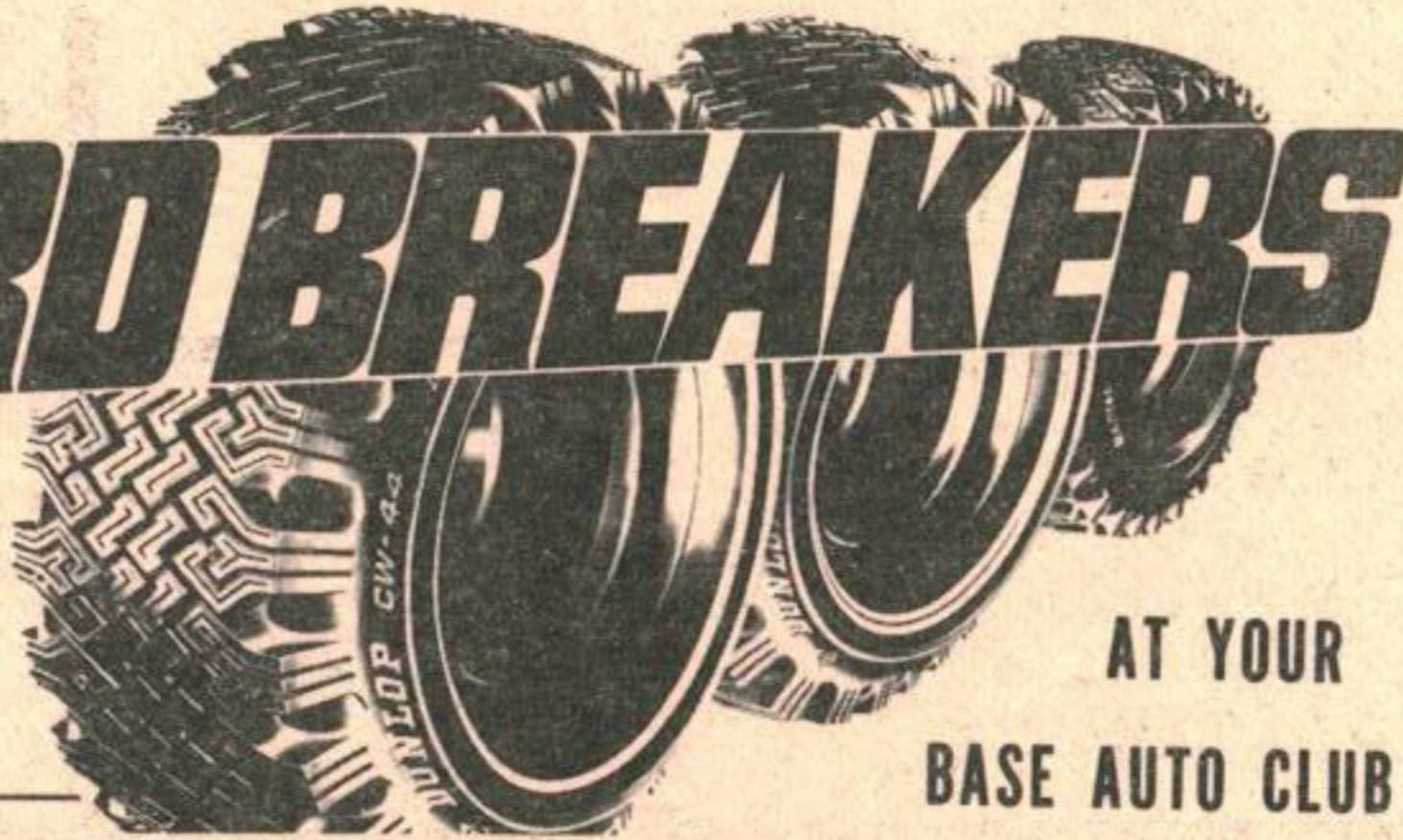
Others now available are:

- Automatic Clothes Dryers
- Automatic Dishwashers
- Baby's needs
- Carpets and rugs
- Credit costs money
- Don't make a move!(about household moving)
- Freezers and freezer food plans
- Stereos, Stoves and Washers.

It is important that you say which leaflet you need (and the association asks that you don't send a "blanket" request for them all. Also you should put the word "Guides" on the envelope.

## DUNLOP BLIZZARD BREAKERS

Whatever kind of tires you have on your car, Dunlop has snow tires to match them... all with the 'get-you-out-of-trouble' traction of Dunlop's unique '4 gripping level' tread design... a separate gripping level for light, medium and heavy snow, and ice.



AT YOUR  
BASE AUTO CLUB

**DUNLOP** SEE DON CAMDEN FOR YOUR TIRE NEEDS—TO BE SURE YOU KNOW WHAT YOU ARE BUYING

**NORTH AMERICAN  
LIFE ASSURANCE COMPANY**  
A Canadian Mutual Company

*Providing programing,  
consulting and service*

**FOR  
ALL TYPES OF INSURANCE**

*Visiting Base Library,  
CFB Gimli, on Mondays.*

**G.F. (Kelly) Laliberte  
I. (IKE) Chamish**

289 Kennedy St.  
Winnipeg, WH. 3-1526.

Shop and Save at  
**WAYNE'S IGA**  
The Store That Cares

Groceries  
Table Rite  
Redbrand Steer  
Beef & Table  
Fresh Produce

CENTRE STREET GIMLI

**CHUDD & SONS**  
Gimli's CHRYSLER Dealer  
SHELL oil products  
642 - 5329

DIANE'S BEAUTY SALON at 41  
Second Ave. is open for your convenience Tuesday through Saturday.

I AM ALSO OPEN AFTER  
SUPPER ON TUES. AND WED. NIGHT!!

TINTS, PERMS AND WIG STYLING  
ARE OUR SPECIALTY.

For appointment call  
642-8850

**DIANE'S BEAUTY SALON**

# BASE EXCHANGE GRAND OPENING

## IN NEW LOCATION (FORMER OWL'S NEST)

### FALL SALE!

#### MEN'S WEAR

- SUITS.
- SINGLE & DOUBLE BREASTED
- LESS THAN ½ REG. PRICE
- SHIRTS            • PARKAS
- SKI JACKETS
- 40% OFF
- NORMAL RETAIL PRICE

#### BOY'S & YOUTH'S

- SKIDOO SUITS
- SKI JACKETS
- CORD PANTS
- SHIRTS · SWEATERS
- ALL 40-60% OFF
- REG. RETAIL PRICE

#### LADIES

- SWEATERS & BLOUSES
- 40% OFF
- GREB WINTER BOOTS
- WINTER COATS
- LESS THAN ½ REG. PRICE

#### GIRL'S

- BLOUSES
- SWEATERS
- PANT SUITS
- PATENT LEATHER SHOES

#### HALLOWEEN

#### CANDY

#### AVAILABLE

#### TOYS

- LARGE & VARIED
- SELECTION AVAILABLE
- AT THE LOWEST PRICES
- IN TOWN

SPECIAL HOURS THIS WEEK ONLY OCT 16-17

Oct 16 11-30 - 21-00 HRS 9pm

Oct 17 10-00 - 16-00 HRS 4pm

FREE COFFEE - DONUTS - HOT CHOCOLATE

FRIDAY & SATURDAY

# Junior Ranks



Cpl Jim Glover, announcing that Mr. Cronshaw had decided to put his door prize back into the draw, so that somebody else could win.

A nice gesture from Mr. Cronshaw which added to a very enjoyable night.

Mrs. Marcella Gatenby receiving a door prize from Cpl Glover at last Saturday's successful dance.

# October Fest Beer Festival Sat. Oct. 24

**\$2.00**  
per person

**8:00 P.M.**  
**C.F.B.**  
**Drill Hall**



**DOOR PRIZES** **9 Piece German Orchestra**  
**LIVE ENTERTAINMENT** **FREE MUGS**

**I.O.S.**  
CANADA

*Fortunes flow  
Through your Hands*

If Your Average Monthly  
Income is \$600.00. Your Total  
Earnings in 30 Years Will Be

**\$216,000.00**

**PART OF IT IS YOURS TO KEEP**

**How much have you kept so far?**

Your I.O.S. Representative is:



**C. E. (Chuck) Keating — Maj. Retired**

He will be available in the  
Base Library on the second and  
fourth Friday of each month, from  
1:00 p.m. to 5:00 p.m. to dis-  
cuss your financial planning.

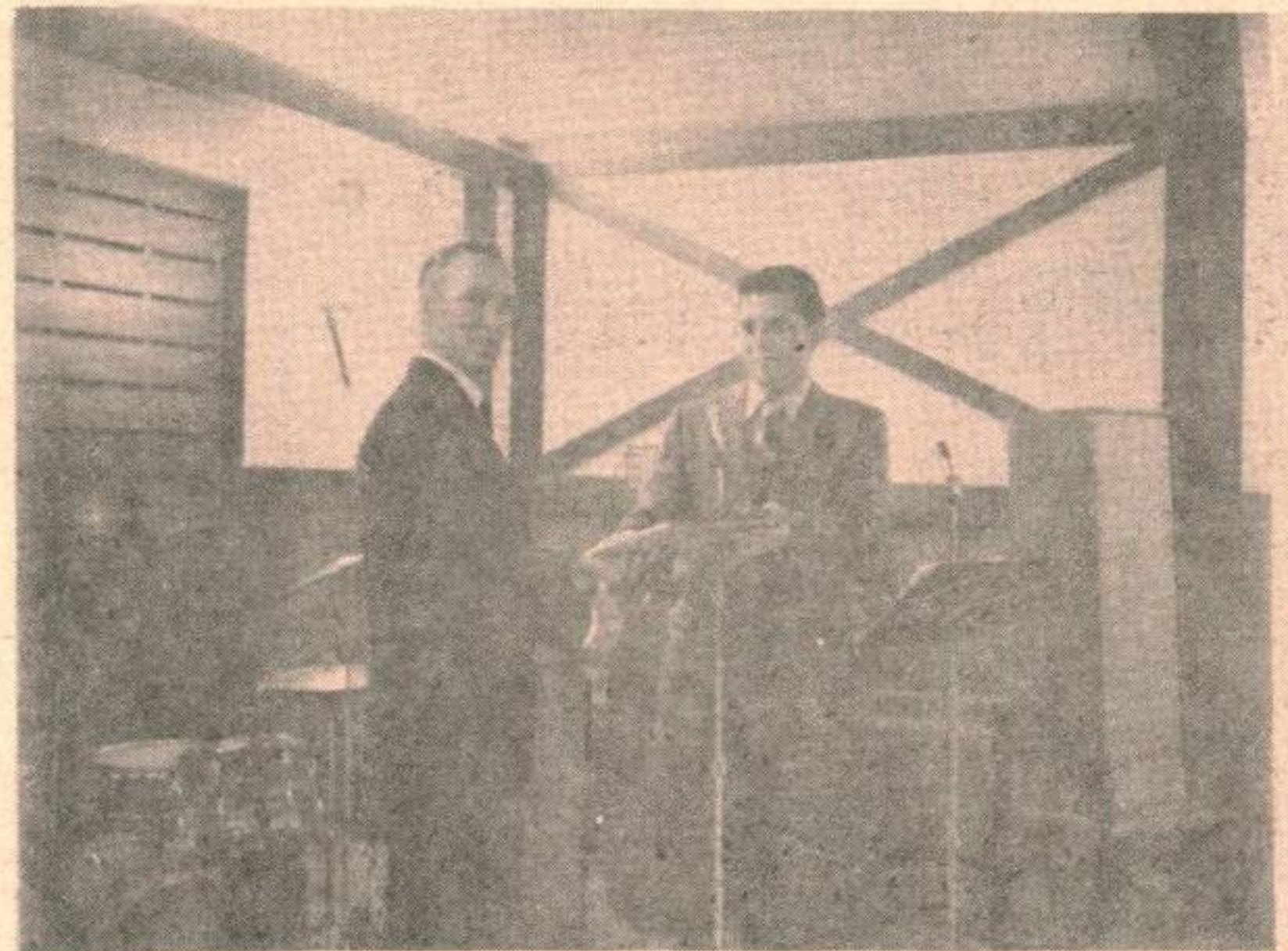
**INVESTORS  
OVERSEAS SERVICES**

383 York Ave., Winnipeg, Manitoba  
Bus. Phone: 942-3177—Res. Phone: 284-1102

# Host Dance



Mrs. Maddy Boran receiving a door prize from Cpl Glover at last Saturday's successful dance.



M/Cpl Jim Williams retiring PMC receiving a plaque for his efforts and management of the Jr. Ranks Mess from M/Cpl Tom Wadey.

**IF YOU CAN'T SEE IT  
DON'T SHOOT AT IT  
BE SAFE, NOT SORRY!**



**TOM-BOY**

**OLD FASHIONED  
BUTCHER SHOP  
SALE**

OPPORTUNITY TO **WIN** one of **6** **1000 lb. STEERS**

DRESSED WEIGHT 550 LBS.  
CUT AND WRAPPED  
READY FOR FREEZER

COMPLETE DETAILS AVAILABLE AT YOUR TOM-BOY STORE



**SOUP**  
8 \$1.00  
10 FL. OZ. TINS

**PRUNE PLUMS** MALKINS CANADA CHOICE 5 \$1.00  
**CHOCOLATE PUFFS** PAULLINS 3 \$1.00  
**SHORTENING** FLUFFO 1 LB. PKG. 39¢

**ROAST** 89¢ LB.  
**FRYING CHICKEN** 33¢ LB.

**TOM-BOY EXCELS IN PRODUCE!**

**RED OR BLUE BRAND BEEF STEERS**

**SIDES** 57¢ LB.  
**HINDS** 69¢ LB.  
**FRONTS** 47¢ LB.  
**SIDES of PORK** 49¢ LB.  
**CUT + WRAPPED "FREE"**

**"OCTOBER CHEESE FESTIVAL"**

**CHEDDAR CHEESE** MEDOLAND MILD LB. 69¢  
**CHEEZ WHIZ** KRAFT 2 LB. JAR \$1.39

**FROZEN FOODS**

**FISH AND CHIPS** FRASERVALE 24 OZ. PKG. 69¢

**BANANAS** 6 LBS. \$1.00  
**POTATOES** 20 LB. BAG 89¢

PRICES EFFECTIVE - OCTOBER 16, 17 & 19, 1970.

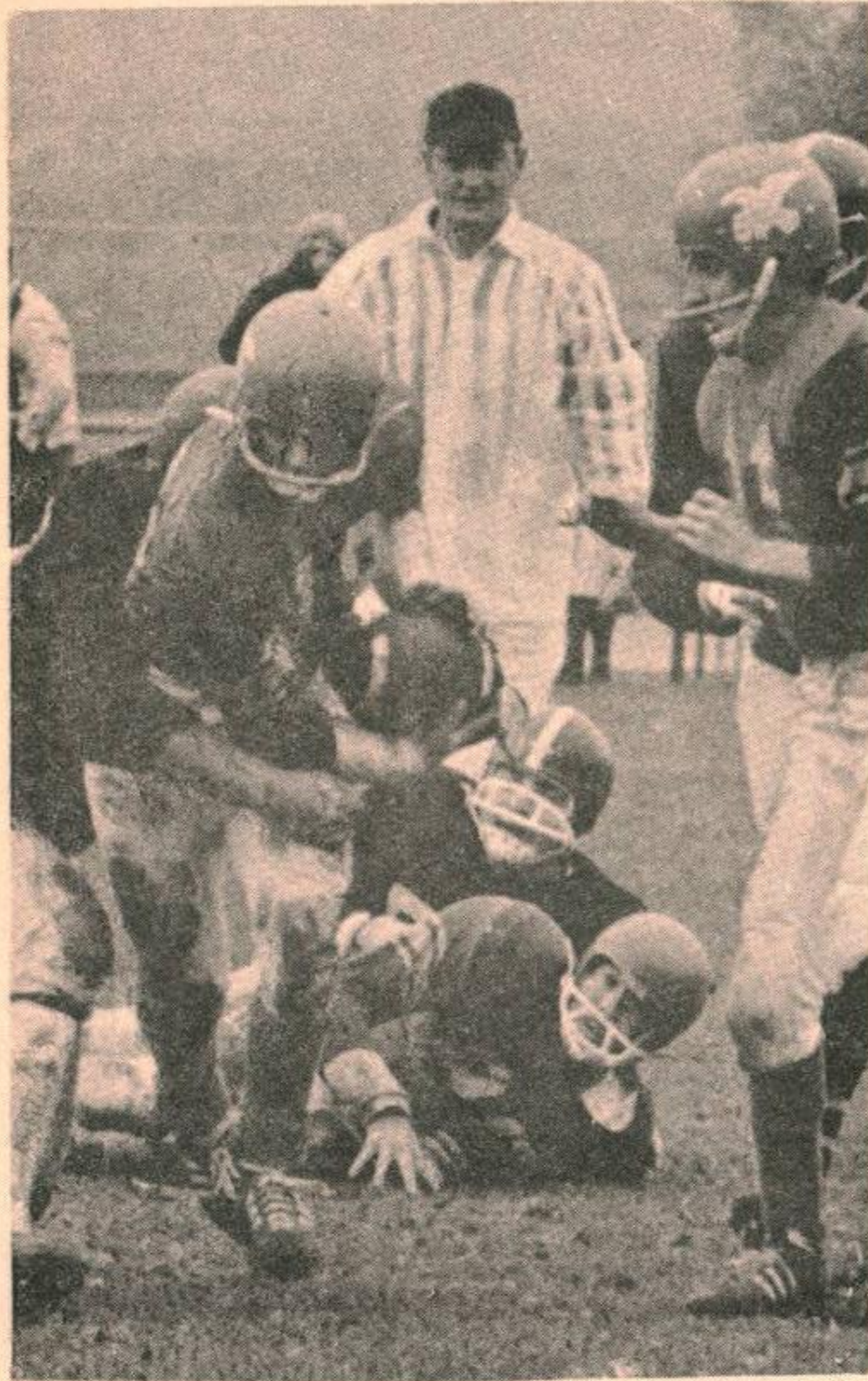
**GIMLI TOM-BOY  
GIMLI MAN**



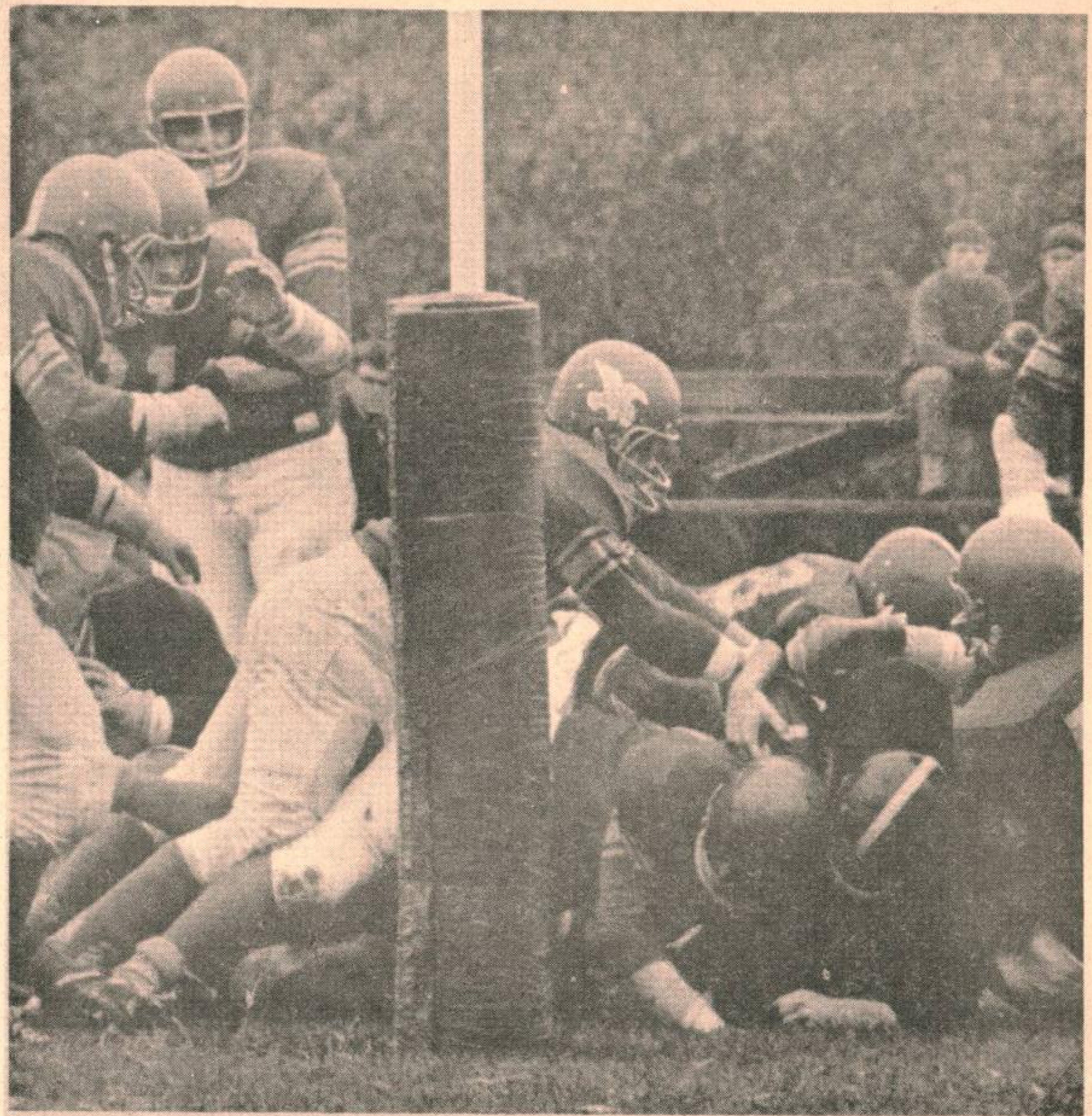
**TOM-BOY**

WE RESERVE THE RIGHT TO LIMIT QUANTITIES.

**Westfair Associate**



NO WHERE TO GO -- An Uplands Falcons halfback tucks in a hand-off but gets no where on this play against the CFHQ Trojans. The two squads are part of the Forces five-team national defence football league which has been operating in the Ottawa area since 1968. Base Trenton's Broncos, the fifth team, joined the league this year. Two more bases, Borden and Petawawa, may enter teams in 1971.  
(CF Photo)



TD THWARTED -- The Uplands Falcons line holds as CFHQ Trojan quarterback, Pte. Bruce Hillary is stopped on the one yard line in a national defence football scrimmage at Base Rockcliffe. The Ottawa area league expanded to five teams this year with the addition of Base Trenton Broncos. Two more Bases, Petawawa and Borden may enter teams in 1971.  
(CF Photo)

**Zone 3  
FLAG FOOTBALL  
CHAMPIONSHIPS**  
**Thurs., Fri., Sat.,  
Oct., 22, 23, 24.**  
**Eight teams competing  
COME OUT & SUPPORT  
THE GIMLI GRONKS!**

OTTAWA (CFP)--A national defence Canadian football league here may be the beginning of a new era for the game in the forces and a first step towards a national championship.

The four-team NDFL expanded to five this year with the addition of Base Trenton's Broncos and two more, Petawawa and Borden, may enter in 1971.

League secretary, MWO Jerry Pizariello is optimistic about national status but he says there are "lots of kinks" to be worked out before it becomes a reality.

The league is made up of Rockcliffe Riders, league champion RCMP Huskies, Uplands Falcons, CFHQ Trojans and the Broncos. The 20-game schedule began with a double header August 30 and ends November 1 in a sudden death tilt for the crown.

It's an after-duty weekend league with sponsoring bases paying bills from non-public funds. The main expense is payment to officials and ground keepers. There are no profits from the gate -- admission to the games is free to the public.

The teams are small by football standards. An average forces player in 1969 packed 180 pounds on a five-foot, eight-inch frame. But what the teams lack in size and know-how, they make up in desire. The Riders from Rockcliffe last year logged 55, two-hour practice sessions after work and on weekends. That's almost a practice a day during the short, two-month season.

League president and director of forces inventory, Col. J.T. West, has been a staunch supporter of the DNFL since its inception in

1968. What impressed him most was the troops' desire to play the game on their own time.

President West is pleased with the league's progress since 1968 and gives credit to Ottawa Rough-rider trainer Fred Peterson for the time he spent with Forces' trainers. West also praised football sailors from the Maritime who helped get the league on its feet. A few of the tars are still active with the NDFL.

Col. West will attend CAFA workshops here this winter with officials from the CAFA the norther-eastern Ontario football association and other senior Canadian football heads to discuss the future of senior ball in Canada. The NDFL is affiliated with NOFA.

The years have been lean for service football since the 1940s. Then, football clubs like the 1942 Grey Cup RCAF Hurricanes, Winnipeg airmen and several intermediate ball clubs on the east coast, dominated the Canadian football scene. In post-war years the Maritime tars kept the forces game alive in the Nova Scotia football league and later in the Atlantic conference football circuit.

In 1957 the Shearwater Flyers, under former Ottawa Roughrider centre Don Loney, romped to the Canadian intermediate title downing the Fort William Redskins 27-21 in Hal-

ifax. In 1967 they again reached the Canadian intermediate finals but lost out to the Western finalists from Bramalea, Ontario. It was the Shearwater sailors last game -- the Atlantic league folded.

In Quebec, the Colleague Militaire Royal Blues play in the six-team Quebec junior varsity league and Royal Military College Redmen scrimmage with colleague teams in the central Canada intercollegiate football conference's eastern division. Both have big 1970 rebuilding jobs to do.

RMC's Redmen under their new coach Carl Digiacoimo will field 24 new faces. Capt. Wally Peters' CMR Blues hope to bounce back after a less than successful 1969 season in the Quebec loop.

Service football has been an on-again off-again affair for three decades, probably because it's a demanding and expensive sport which conditions only a small part of Canada's forces.

The Ottawa league is the sum total of a lot of effort by a handful of ball players, league executives and base commanders. It costs the taxpayer nothing and if Ottawa's desire to play the game catches on, as it appears to have on a number of bases, perhaps a national championship is not that far off.

## DO YOU KNOW BASEBALL

By Leo Burns

Home team leads 4-3 top half of the sixth inning, bases are loaded

Home team leads 4-3 top half of the sixth inning, bases are loaded, one is out, the batter hits a sharp grounder to the third baseman, who fields the ball and steps on third forcing the runner from second and throws to the plate. The runner from third nearing the plate stops and the catcher turns and throws to first base in time to nip the batter. The umpire rules no run scores.

Quest: If you were the visiting manager, would you be satisfied with that ruling.

Ans: You must be satisfied with the umpire's ruling, no runner may score if the batter fails to reach first base safely.

Last half of the eighth inning, the visitors are leading 4-2, two are out, bases were loaded, with the count 3-2. The next pitch is wild for ball four and the ball caroms off the catcher's mitt and rolls toward the first base dugout. Runners on third and second score, while the runner on first advances to second. As the batter crosses first base, the catcher throws to first and the first baseman tags the runner before he can return to the bag. The home team complain that he cannot be put out, as the rules permit him to over-run first base.

Quest: Are they right?

Ans: The home team stated the rule right, but the batter is out anyhow. The rules committee agree that the base runner has this privilege only on a batted ball or third strike. As this was ball four he does not have the right, as there is no need to over-run the bag.



## Selkirk Funeral Chapel

\*\* serving the Interlake Area  
with dedicated service  
\*\* 24-hour Ambulance service

Phone 482-6284

Res. 482-5419

209 DUFFERIN AVE.  
GARTH CLARY, DIRECTOR SELKIRK, MANITOBA



THE  
*falcon lounge*  
OF FIRST AVENUE  
GIMLI, MAN.

## CO-OP INSURANCE

AUTO - FIRE - MOTORCYCLE  
3, 6 & 12 Month Policies  
Issued Immediately  
INSURANCE AT COST

PLUS EXTRA BENEFITS

ALL military personnel  
insurable

Agent: J.B. Heidinger  
85 5th Ave.

642-8347

## TARGET STORE

Complete Family

Clothing

642-5246

Tues. to Thurs. 9am-6pm  
Friday 9am-7pm  
Saturday 9am-6pm

CFB GIMLI  
HOCKEY CLUB

VS

CFB WINNIPEG

Sat. 17 Oct. 8:00pm

GIMLI MEMORIAL  
ARENA

**INTERSECTION HOCKEY**

League  
 Co-ordinator - Cpl D. MacLean  
 Chief Referee - Lt. B. Ker  
 -- Capt. P. Brown Local - 11  
 -- Capt. Maltais "A" Flight  
 -- CWO Roemer Local - 69r2  
 -- Sgt Hurens Local - 6  
 Timers: Pte Lacelle

**LEAGUE BY-LAWS:**

1. CAHA rules to apply unless stipulated otherwise.
2. Players must proceed through gate when substituting. (2 min. penalty for infraction).
3. Helmets for all players mandatory effective 19 January 70.
4. Face masks will be compulsory for all goalies.
5. Teams must be ready to commence by 1915 hours.
6. Duration of Periods:  
 First and second period 20 minutes straight time.  
 Third period - first ten minutes straight time, second ten minute stop time. (Referee has discretion to alter times if time limited due to unforeseen circumstances.)
7. Fighting - first infraction Match Penalty, second infraction, Suspension (length to be determined by league co-ordinator).

**HOCKEY SCHEDULE**

PRACTICE	PRACTICE	PRACTICE	PRACTICE
October 26	October 29		
1900-2000-Bruins	1900-2000-Hawks		
2000-2100-Giants	2000-2100-Wings		
2100-2200-Wings	2100-2200-Giants		
2200-2300-Hawks	2200-2300-Bruins		
PRACTICE	PRACTICE	PRACTICE	PRACTICE

November 2	November 5
1900 - Giants vs Bruins	1900 - Bruins vs Wings
2100 - Wings vs Hawks	2100 - Hawks vs Giants

November 9	November 12
1900 - Giants vs Wings	1900 - Wings vs Hawks
2100 - Hawks vs Bruins	2100 - Bruins vs Giants

November 16	November 19
1900 - Hawks vs Giants	1900 - Hawks vs Bruins
2100 - Bruins vs Wings	2100 - Giants vs Wings

November 23	November 26
1900 - Bruins vs Giants	1900 - Wings vs Bruins
2100 - Hawks vs Wings	2100 - Giants vs Hawks

**MAIL EARLY FOR CHRISTMAS**

November 30	December 3
1900 - Wings vs Giants	1900 - Hawks vs Wings
2100 - Bruins vs Hawks	2100 - Giants vs Bruins
<b>END OF FALL SCHEDULE</b>	
January 21	January 25
1900 - Bruins vs Hawks	1900 - Giants vs Bruins
2100 - Wings vs Giants	2100 - Wings vs Hawks
January 28	February 1
1900 - Bruins vs Wings	1900 - Giants vs Wings
2100 - Hawks vs Giants	2100 - Hawks vs Bruins
February 4	February 8
1900 - Giants vs Bruins	1900 - Bruins vs Wings
2100 - Wings vs Hawks	2100 - Hawks vs Giants
February 11	February 15
1900 - Giants vs Wings	1900 - Wings vs Hawks
2100 - Hawks vs Bruins	2100 - Bruins vs Giants
February 18	February 22
1900 - Hawks vs Giants	1900 - Hawks vs Bruins
2100 - Bruins vs Wings	2100 - Giants vs Wings

OTTAWA (CFP)--Sending Christmas greetings to service friends overseas this year? If so, here are the suggested mailing dates for overseas delivery:

	Ordinary Mail	
	Letters	Parcels
Britain	Dec. 4	Nov. 27
Europe	Dec. 4	Nov. 27
Cyprus	Dec. 4	Nov. 27
Ghana	Oct. 23	Oct. 19
India	Oct. 2	Oct. 2
Indo-China	Oct. 2	Oct. 2
Pakistan	Oct. 2	Oct. 2
Middle East	Oct. 2	Oct. 2

	Air Mail	
	Letters	Parcels
Britain	Dec. 14	Dec. 9
Europe	Dec. 11	Dec. 7
Cyprus	Dec. 4	Dec. 3
Ghana	Dec. 4	Dec. 3
India	Dec. 11	Dec. 8
Indo-China	Dec. 4	Dec. 3
Pakistan	Dec. 11	Dec. 4
Middle East	Dec. 9	Dec. 4

Don't forget to affix customs declarations to parcels and to make sure you check addresses for correctness.

**Saving money on food?**

- ✓ CHECK OUR WEEKLY SPECIALS!
- ✓ CHECK OUR REGULAR PRICES!
- ✓ CHECK OUR MEAT BARGAINS!

Stock up on frozen foods and meats at reduced prices.

**TIP TOP CLOVER FARM**

PHONE US AT 642-5418



**Viking Motor Hotel LTD.**

PHONE 642-5181

P.O. BOX 131

- 21 Units -
- Air Conditioned -
- Cocktail Lounge -
- Sauna Baths -
- Dining Room -
- Banquet Facilities -
- Beverage Room -

Exotic Dancer Monday & Tuesday  
**Smorgasbord Sun**  
 BAND Wed, Thr, Fri, & Sat.

**Party Ice For Sale**

Phone for reservations



**THERMAL UNDERWEAR**  
FOR MEN AND BOYS



**FLANNELETTE PYJAMAS**  
*For The Family*

Soft, cozy sleepwear for mom, dad and the youngsters. Length printed flannelette pyjamas in all sizes. Carefully tailored, full cut. Freshwork! Washable! Your choice color-bright patterns. Big value! Select early, save!

- Men's PYJAMA SIZES 28 to 34  
Reg. 3.49 **SPECIAL 2.88**
- LADIES' PYJAMAS SIZES 32 to 38  
Reg. 3.99 **SPECIAL 2.88**
- MISSIES' PYJAMAS SIZES 5 to 14  
Reg. 2.99 **SPECIAL 2.38**
- BOYS' PYJAMAS SIZES 8 to 16  
**SPECIAL 1.99**
- LITTLE BOYS' PYJAMAS SIZES 2 to 6X  
Reg. 1.99 **SPECIAL 1.66**
- GIRLS' PYJAMAS SIZES 2 to 6X  
Reg. 1.99 **SPECIAL 1.66**



**FLANNELETTE GOWNS**

"Miss Miss" and short gowns for sleeping comfort. Eyelet, smocking and piping trim, elbow length sleeves with gathered elastic cuffs. Assorted colors in floral prints. Sizes: S-M-L in long gowns and S-M-L & O/S in short gowns.

- Your Choice: LADIES' LONG OR SHORT GOWNS  
Reg. 3.99 Each **SPECIAL 2.88**
- JUNIOR MISSES' AND LITTLE GIRLS' GOWNS  
Buy sleeping comfort! Full length printed flannelette gowns. Lace trimmed collar and yoke. Long sleeves. Assorted floral designs. Colors: Pink, Blue, Mauve, Juniper. Misses' sizes: 8 to 14. Little Girls' sizes: 2 to 6X.  
Jr. Misses' Gowns Reg. 2.99 Each **SPECIAL 2.38**  
Little Girls' Gowns Reg. 1.99 Each **SPECIAL 1.66**



**COLDER WEATHER AHEAD**  
Shop For **OUTERWEAR** Now and **SAVE!**

**WINTER Values SALE**

**A Great Sale!**  
GREAT SAVINGS. GREAT VALUES. GREAT SELECTION. This great annual October event brings variety, quality at unusual low prices. Be value-wise... Shop for Family Outerwear and Home Needs during this great sale event and save!

SALE STARTS  
**Thursday**  
**OCTOBER**  
**15<sup>th</sup>**

**Ladies' 3/4 Shag Coats**  
Reg. 24.99 Each **SPECIAL 16.99**

Ladies' Dunbar pile shag car coat. 3/4 length, double breasted rayon satin lining, 1/2 back belt. Colors: Beige or Silver. Sizes: 12 to 20. Buy now, save 8.00!

**Little Girls' Pile Jackets**  
Reg. 6.99 Each **SPECIAL 4.99**

Winter warmth in Orlon blend jackets. Quilt rayon lining, fur trim on hood and contrast braid trim above hem. Three exciting colors. Sizes: 3 to 6X. Priced to save you 2.00.

**Little Boys' Pile Jackets**  
Reg. 6.99 Each **SPECIAL 4.99**

Orlon pile shell. Fully quilt lined, self hood with drawstrings, two front pockets, braid trim on bottom. "zip" front closure. Blue, Loden, in sizes 3 to 6X.



OUR GREAT FALL-WINTER VALUES SALE... FEATURING OUTERWEAR AND HOME NEEDS... SAVINGS!

**ROBINSON STORES**

GIMLI

OVER 200 STORES OPERATING FROM THE LAKEHEAD TO THE PACIFIC

**PLUS VALUES In Sportswear!**

**JUNIOR MISSES' PILE JACKETS**

A lovely jacket, expertly fashioned from Orlon blend pile with close fitting fur trimmed hood, warm quilt rayon lining. Exceptional value at a savings price. Choice of 3 popular colors. Junior misses' sizes: 7 to 14. Shop this week-end, Save!  
Reg. 8.99 Each **SPECIAL 6.99**



**Ladies' Bulky CARDIGANS**

Acrylic semi-bulky cardigan. Collarless, all-over novelty check pattern. Colors: Purple, Bronze, Red, Green. Sizes: Medium, Large. Outstanding Sale Value!  
Reg. 5.99 Each **SPECIAL 4.99**



**Jr. Misses' Stretch PULLOVER TOP**

A good basic addition to any wardrobe. Plain colored, and practical stretch nylon with striped mock turtleneck. Junior Misses' sizes: 7 to 12.  
**SPECIAL 1.77**



**ONE SIZE PANTY HOSE!**

**FINE QUALITY STRETCH PANTY HOSE**

**SUPER SPECIAL 77¢ each**  
Nylon stretch! Enjoy both comfort and sleek good looks. 20 denier leg, 40 denier reinforced panty, nude heel. Shades of beige and Mink. One size fits all.



**Ladies' Crimp PANTS**  
Reg. 6.99 Each **5.99**

Polyester crimp pants. Elastic waist. Pull-on style. Diagonal seam. Sweater crease. Navy, Green, Brown, Purple and White. Sizes: 10 to 18. Sale priced to save you 2.00. Shop early!

**Girls' Thermal STRETCH SLIMS**  
Reg. 3.99 Each **2.88**

Compare! Thermal bonded stretch nylon slims for little girls. Warm and cozy for the cold months ahead. Assorted finishes and colors, in sizes 3 to 6X. Hurry, save 1.11!

**Boys' Corduroy PANTS**  
Super Value **1.88**

Medium wale corduroy half boures. Flared, tapered legs. 2 styled front pockets, back patch pocket. Zip and double bottom tab closure. Popular colors, in sizes 4 to 6X.

**Ladies' Gloves, Misses' & Children's Mitts**

Bulky acrylic - warm and cozy fabric that defies "Mr. Frost" on those cold winter days. Your choice of assorted patterns, in multi-color and plain knits. Stretch size - one size fits all. Outstanding Sale Special.

- LADIES' GLOVES Reg. 79¢ Pair **57¢**
- MISSIES' MITTS Reg. 79¢ Pair **57¢**
- CHILD'S MITTS Reg. 75¢ Pair **47¢**

**MEN'S BOYS' PARKAS**  
DESIGNED FOR WARMTH

**Men's Duck Hydro PARKA**

Reg. 12.99 Each **SPECIAL 10.99**

10-ounce, water repellent cotton duck. Heavy quilt lining, button-on hood with drawstring, four large pockets. Big zipper front closure, knitted storm cuffs. Olive color, sizes 36 to 48. A tremendous Sale Value, priced to save you 2.00.



**Boys' Duck Hydro PARKA**

Reg. 10.99 Each **SPECIAL 8.99**

Boys, here is a remarkable Sale Special! 10-oz. cotton canvas duck shell, fully quilt lined. Detachable hood with drawstring. Regular self collar, knitted storm cuffs, button tabs at neck and bottom, drawstring waist. Two front pockets, zipper front closure. Olive color, sizes 8 to 18. Priced to save you 2.00.



**Boys' Acrylic PULLOVER**  
Super Value **SPECIAL 2.99**

Boys' "ski" pullover, 100% acrylic yarns. Mock turtleneck style, long sleeves, rib knit neck, cuffs and waistband. Assorted fancy embroidered patterns. Washable. Colors: Gold, Green, Blue, Almond. Sizes: S-M-L.

**PURE WOOL WORSTED KNITTING YARN**

Reg. 98¢ Skein **SPECIAL 58¢**

A timely offer! Pure wool knitting worsted. No. 1 quality at a special price. 4 ply, for all general knitting. Beautiful selection of shades. Double "Full Sheen." Hurry in early for your needs.



**STURDY PLASTIC "SWINGER" WASTEBASKETS**

Reg. 3.49 Each **SPECIAL 2.44**

A new dimension in covered wastebaskets. It's got the magic touch! Swings aside to open - brings back to close. Made of durable polyethylene. Right size, height 19", top 13". Assorted fashionable colors.



**Giant Heavy Construction DUMP TRUCKS**

Reg. 2.98 Each **SPECIAL 1.99**

Get the fun with this whopping giant dump truck. Suggests built with large dumping back. Looks and works like the real thing. About 18 inches long. Unbreakable poly. A beauty!



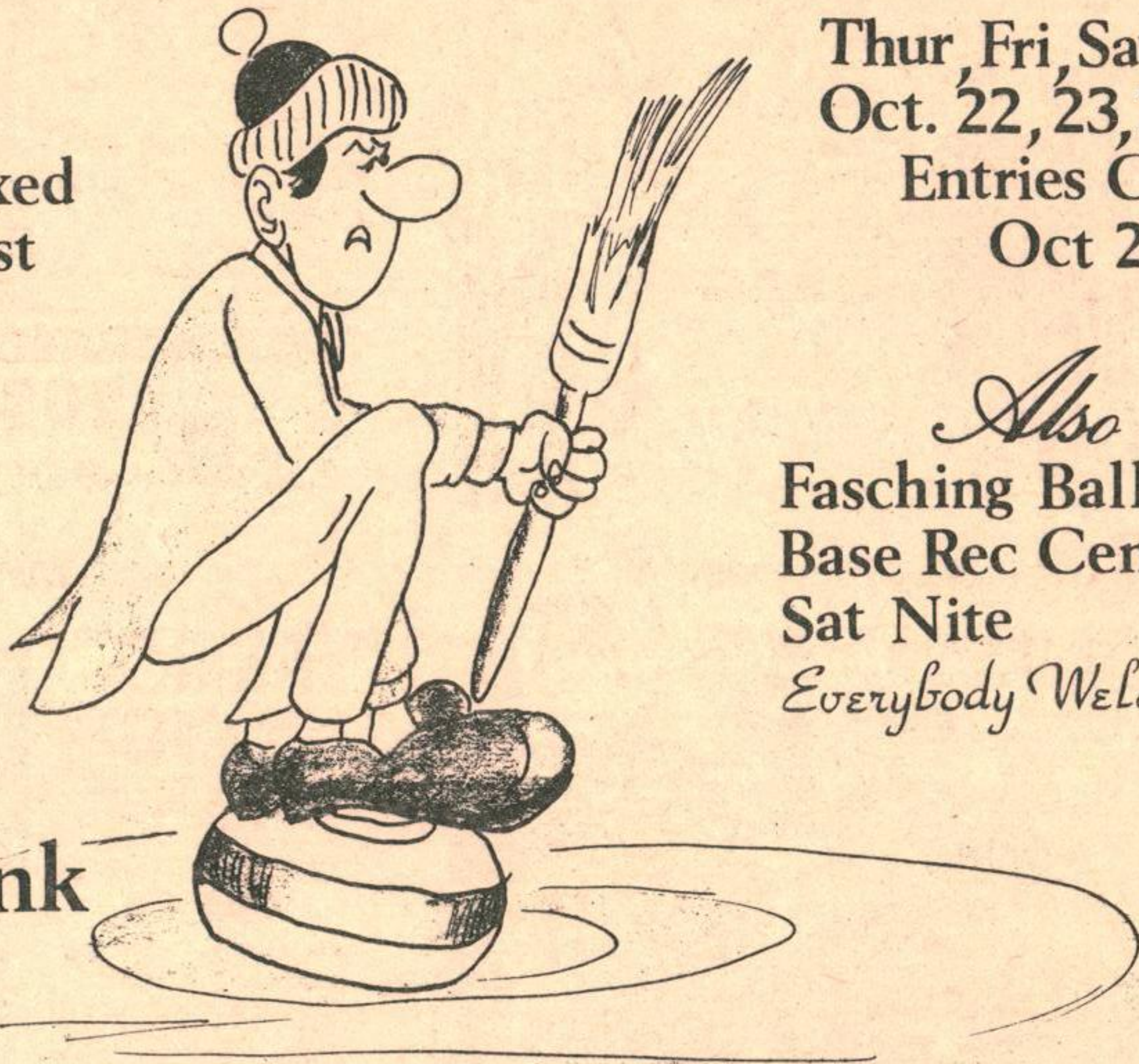
**ASSORTED WOVEN FABRICS**  
Reg. 1.99

**ORIGINAL MITTS**  
Reg. 4.99

# CFB Gimli Curling Club OPEN BONSPIEL

Mens, Ladies & Mixed  
Rinks Accepted. Must  
be 18 yrs or Over

Thur, Fri, Sat & Sun  
Oct. 22, 23, 24 & 25  
Entries Close  
Oct 20



*Also*  
Fasching Ball  
Base Rec Centre  
Sat Nite  
*Everybody Welcome*

**Fee**  
**\$10** Per rink  
32 rink limit  
3 events

SEND ENTRIES TO: BOX 421 ASPEN PARK, MANITOBA  
*Or* HUGHIE GILLIS ----- 642-8203  
RAY GAGNON ----- 642-7986

# Chapel News

## R.C. Chapel

OUR LADY OF LORETTO CHAPEL  
CFB GIMLI, ASPEN PARK, MAN

Major (Rev.) J. Georges Savoie  
B.A.;LPh;Bth.  
Phone: 156

### MASSES

Sunday - 9:00 a.m. and  
11:15 p.m.  
Weekdays - 5:00 p.m.

### CONFESSIONS

Saturday - 4:00 p.m. - 5:00 p.m.  
Before each Mass and whenever  
you feel like it. We will try  
to accommodate everyone.

### BAPTISMS

By appointment-usually on Sunday.

### MARRIAGES

1. Give two months notice to your Chaplain.
2. For a Mixed Marriage - four months notice would be preferable since the non-Catholic party needs to take a few instructions about the Catholic faith.

C.W.L. - Meeting every third Tuesday of the month at 8:00 p.m.

ALTAR SERVERS - Meeting every second Wednesday of the month at 4:15 p.m.

### MASSES IN NEIGHBORING PARISHES/RC

ST. MICHAELS' CHURCH, Gimli, Sunday Mass at 10:00 a.m. Saturday at 7:30 p.m. One half-hour of confessions before Masses.

FRASERWOOD: 3:00 p.m. first Sunday of the month.

WINNIPEG BEACH: 3:00 p.m. second Sunday of the month.

FINNS: 3:00 p.m. third Sunday of the month.

KOMARNO: 3:00 p.m. fourth Sunday of the month.

CAMP MORTON: 10:00 a.m. every Sunday.

## Protestant Chapel

Rev. D.W. Hilton  
Phone: 156r2

### SUNDAY - 18 October 1970

10:00 a.m. - Guest Minister -  
Major (The Rev.) Gordon Mercer.

### THURSDAY - 15 October 1970

Lt.-Col. (The Rev.) Gordon Hedley-Smith will conduct a workshop for Sunday school teachers.

6:30 p.m. - Junior Choir Practice  
7:30 p.m. - Senior Choir Practice

CONFIRMATION CLASSES - (United Church) will commence on SUNDAY, 15 OCTOBER at 2:00 p.m.

# Announcements

### Sunday October 18, 1970

1000 hrs. Holy Communion -  
Celebrant Major, the Reverend,  
Gorden Mercer.

### Tuesday October 20, 1970

1330 hrs. Chapel Committee  
meets in the Chapel Annex.

### Wednesday October 21, 1970

Chapel Guild meets in the  
Chapel Annex.

### Thursday October 22, 1970

1830 hrs - Junior Choir Practice  
1930 hrs - Senior Choir Practice

### Sunday October 25, 1970

1400 hrs. - Confirmation classes  
commence in the Chapel Annex.

## AIRFIELDS WILL ALWAYS BE IN TOM ELDEN'S LIFE

(Reprinted from the Canadian Churchman)

Outside his window four Rolls-Royce jet turbines build to a screaming pitch as another jetliner prepares for its take-off.

But the 47-year-old man behind his office desk, far from being unhappy that he can no longer pilot these flights, is busily engaged in a new and, what he considers, vital service at Vancouver International Airport.

Rev. Tom Elden is head of the airport's new interfaith ministry and is Chaplain to the 6,000 permanent employees, including flight crews, that work on the airfield each day.

"When airport chaplains around the world meet in Paris next month, I hope we will be able to say we are a little closer to realizing the full value of this new mission," he says.

And an unusual mission it is. Unlike almost all other international airports with Chaplains, Elden has no chapel in which to conduct services. And as long as he is with the Vancouver airport ministry, he is not likely to have one either.

A 20-year veteran pilot with Canadian Pacific Airlines (now CP Air) Elden used his pass to visit major airports and chaplains in North America and Europe and his conclusion is that airport chapels are little used and a waste of space.

At Kennedys in New York a \$1,000, 000 airport chapel that seats 250 will have 15 or 20 persons at each service, he says. And at Heathrow in

London, a \$300,000 chapel is used only three times a week.

"What we have done here is the first real attempt to determine what the functions of a ministry to an airport community should be. Then, we designed facilities and programs to suit those functions.

Elden's working area, off a busy corridor on the terminals' second floor, consists of a reception area, small counselling rooms and a discussion group area. Smart, stylish lounge furniture, reading material and tape recorders with brief, down-to-earth "messages" prepared by Elden await visitors.

Ordained by the United Church of Canada two years ago, Elden says conversations with airport personnel convinced him of the need for pastoral counselling where men and women could find a few moments of solitude for reflection.

Elden, who flew for the RCAF during World War II, conceived of the airport ministry along worker-priest lines, flying part-time for CP Air to keep in contact with airport employees. However, a heart attack during his final year of theology automatically terminated his pilot's licence.

Now supported by eight denominations, three airlines companies and individuals and associations, Elden spends all his time with pilots, stewardesses, ticket agents, cargo handlers, mechanics, traffic controllers and others that make up the airport community.

Rev. John Wolferstan, local Anglican priest who is on the board of directors, says the airport ministry is the church's outreach into the community.

"What a wonderful opportunity to keep the church relevant", he comments. "Airline employees are constantly aboard, mixing with people of almost every race, creed and color. They have a marvellous opportunity to see first-hand how others live and they are in a prime position to promote better understanding."

Various films on this theme, as well as films on human relationships, marriage, the role of the faith and work situations will be available, as well as brief messages on a tape recorder which visitors may use.

**Tom Elden's Life - Cont**

"I believe in using modern methods of getting the word across", Elden says. "You can't preach in the old way any more. You have to hit them hard in five minutes -- that's the only way to do it."

Part of an airport Chaplain's job is to give the people who work there a sense of community. Being in Vancouver today and Hong Kong or Mexico City tomorrow affects one's style of life.

"It is more difficult for airport people to relate to the community, to the residential parish or to any group with whom they might ordinarily have identified themselves", says Elden. "This is where interfaith ministry comes in -- helping to promote a sense of community and a sense of belonging.

"The jet-age brings people together and, conversely, where employees are concerned, very often draws them apart. In promoting a sense of community we hope to help those with common characteristics and interests working together within a larger society to have a better appreciation of each other for who they are and not what they are."

"Our attitude and approach to our work, to co-workers and to our neighbors is very important. Our accomplishments and contributions in effort and in talent are an account of our stewardship and they are offerable to God", he says.

**ST AUGUSTINE  
ANGLICAN CHURCH**

**PANCAKE SUPPER FRI OCT 23**

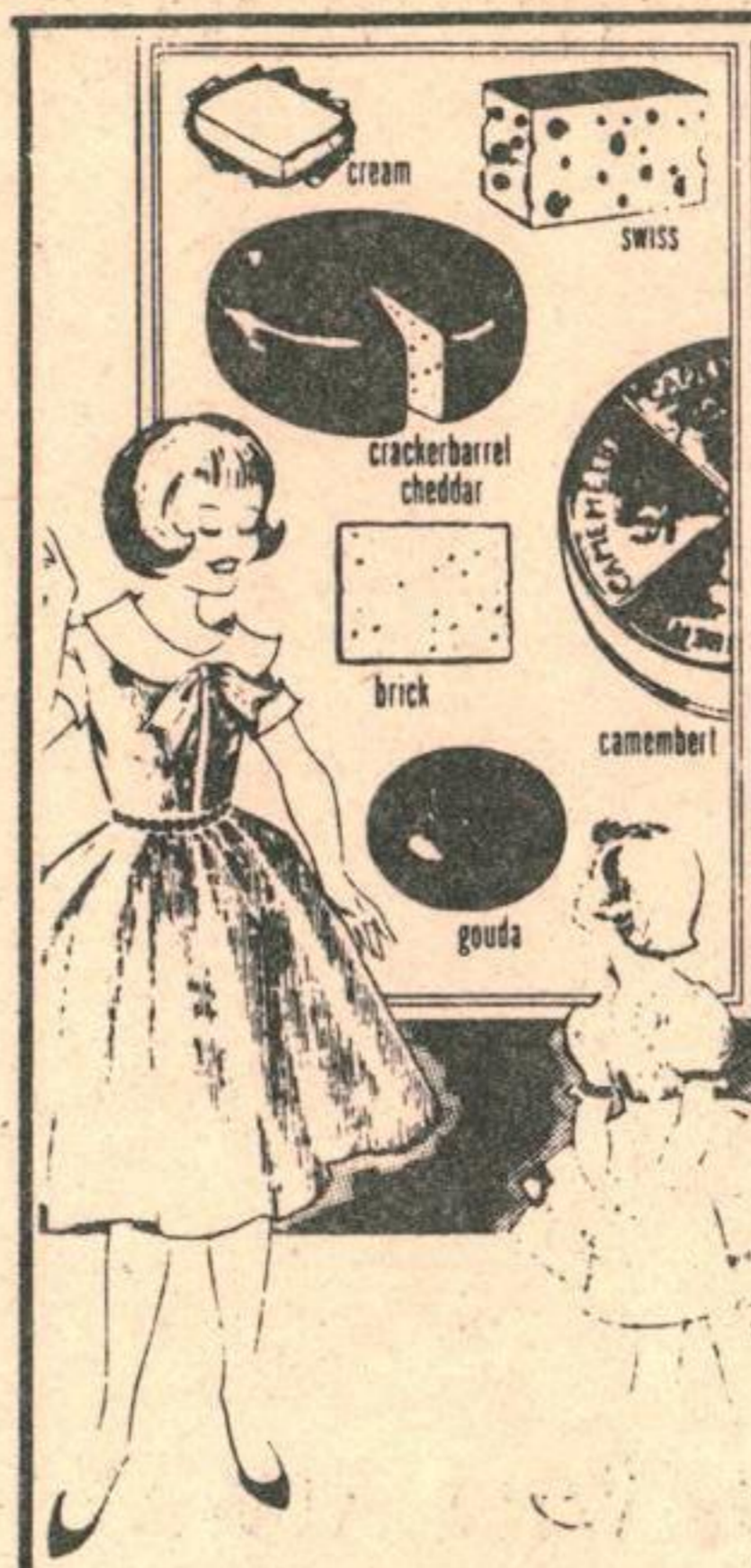
**IN THE RC CHURCH BASEMENT 5 PM**

**ADMISSION**

**\$1.00 ADULTS**

**CHILDREN 50¢**

**PREE-SCHOOL FREE**



**CHEESE SLICES 2 lb. \$1.39**  
**CHEEZ WHIZ 2 lb. \$1.49**  
**DINNER CATELLI 2 FOR 31¢**  
MACARONI + CHEESE 702

**CHEESE Solo STORES**

**FREEZER BEEF  
CUT AND WRAPPED**

**HINDS LB 69¢**  
**SIDES LB. 57¢**  
**FRONTS LB. 47¢**  
**GRA FRYING CHICKENS lb 39¢**  
**PORK BUTT ROASTS lb 49¢**  
**PORK TENDERLOIN lb. \$1.15**  
**SIDE BACON lb. 65¢**

**FARM FRESH PRODUCE**

**CALIFORNIA TOMATOES 2lbs 45**  
**BANANAS 3lbs 49**  
**LETTUCE EACH 29**  
CAN NOT WASHED  
**POTATOES 10 LBS. 55**

**SALES EFFECTIVE OCT 15 - OCT 31 WE RESERVE THE RIGHT TO LIMIT QUANTITIES**

**G.C. NIBLETS 12 FL. OZ. MED. SMALL PEAS OR LARGE PEAS - 14 FL. OZ.**

**4 TINS 89¢**

**BLUE RIBBON 10% OFF**

**COFFEE**

**89¢**

**NET LB.**

**PORK BACK SPARE RIBS**

**99¢**

**LB.**

**Lord's Solo**

**OPEN DAILY 9AM - 9 P.M.**

**SUNDAYS 12 NOON - 6 P.M.**

**SALMON PARAVOUNT SOCKETS HAUS 69¢**  
**TEA BAGS RED ROSE 60's 85¢**  
**ZEE DELUXE TOILET TISSUE 4's 63¢**  
**CRISCO OIL 38 OZ. \$1.15**  
**FLOUR ROBIN HOOD 20 LBS. \$1.65**  
**PLUMS BRIGHT'S NO. 2 2 TINS 45¢**  
**CHERRIES BRIGHT'S 1/2 OZ 2 TINS 55¢**  
**BISCUITS PAULINA'S CHOCOLATE PUFFS 2 PKGS. 69¢**  
**BEEF STEW 15 OZ 2 TINS 69¢**



**FRASERVALE STRAWBERRIES 15 OZ 2/89¢**  
**FRASERVALE FISH AND CHIPS 21 OZ 63¢**  
**LIBBY'S PEAS 2 LBS 59¢**

**SELKIRK LUMBER COMPANY LIMITED**

**Complete Building Supplies - Concrete Block Manufacturing**

SELKIRK 482-3141      WINNIPEG BEACH 389-2024      GIMLI 642-8255



# The MART

<b>HOUSES</b>
For Sale: 60' x 12', 3 bedroom House Trailer and 1/2 lot in town of Gimli Phone: 642-8310.
<b>AUTOMOBILES</b>
For Sale: 1970 Cortina G.T. only 5,000 miles. Still on warrantee. Top shape with radio. Phone: 642-8353.
For Sale: 1969 Ford Ltd. in excellent condition. Power brakes, steering and all the possible options. Owner must sell due to posting. Phone: 642-7466.
<b>MISCELLANEOUS</b>
For Sale: 1970 Power Taboggan, used 30 to 40 hours. Original price \$862. will sell for \$625., also a 17" portable TV used one year excellent condition - \$75. Phone: 8310.
For Sale: Senior boys hockey pants, size 36-\$3.00, shin pads-\$2.00, Junior boys jock strap & cup-\$1.00, Senior boys jock strap & cup-\$1.00, CCM hockey skates, size 7 - \$4.00, Bauer hockey skates, size 4-\$3.00, babies orlon pile 2-piece snow suit, fits to two years- \$4.00, approximately 60 feet of picket fence, painted white, 3 months old - cost \$70. selling for \$25. Phone 642-8386.
For Sale: Twin baby carriage, converts to twin car bed and twin stroller. In excellent condition. Phone: 642-8821 or 27-3rd Ave. Gimli.
For Sale: Baby's crib with mattress, large sled well constructed, baby buggy-three way - stroller car/carrier & buggy, rocking duck. Can be seen at PMQ No. 20.
For Sale: Retriever pups. Males \$10. Females \$15. Phone: 642-5584.
WANTED - GOOD HOME - preferably on a farm for: 7 months old male German Sheppard/Border Collie pup. Color and distinctive markings of German Sheppard. This animal loves children and shows good possibilities as a watch-dog. Height, 20 inches; weight, 40-45 lbs. Black and white spotted 1 year old male Springer Spaniel. Height, 24 inches; weight, 60 lbs. A 2 year old male dog, mixed breed. Color same as Collie, although dog resembles small Irish Wolfhound. Height, 22 inches; weight, 45 lbs. Anyone interested in any of the above dogs is asked to call the poundkeeper, Les Gramlich at 642-7284 on week-ends or after 5:00 p.m. or call same at 642-5151, local 27 on week-days before 5:00 p.m.

# GIMLI HAPPENINGS

If your club or organization wishes to announce an upcoming event call or write B 10, C.F.B. Gimli, Aspen Park, Manitoba or Phone: 642-5151 - Local 26

- Fri. 16 Oct. GRADUATION.....6905  
1830 hrs. CFB Gimli, Rec. Centre.
- Sat. 17 Oct. WALKATHON...GIMLI...PARK  
to CAMP MORTON.....Funds  
for Local Mentally Re-  
tarded.....Gimli, Man.
- Sat. 17 Oct. BINGO....AND....DANCE...  
2000 hrs. Dress.....Casual.  
Junior Ranks Mess.
- Sat. 17 Oct. RUMMAGE.....SALE.  
1:30 p.m. Women's Institute.  
Luthern Church, Gimli.
- Sat. 18 Oct. MOVIE...SHIP OF FOOLS...  
2000 hrs with Lee Marvin.  
Junior Ranks Mess.
- Sun. 19 Oct. WIVES.....WISECRACKS..  
8:00 p.m. Officers'.....Mess.
- Oct. 19 to HOSPITAL.....AUXILLARY  
24 MEMBERSHIP.....DRIVE  
Gimli, Manitoba.
- Fri. 23 Oct. PANCAKE.....SUPPER  
5:00 p.m. R.C. Church Basement....  
Town of Gimli.....  
Admission Charges.
- Sat. 24 Oct. ....OKTOBERFEST....  
Base Recreation Centre..  
All ranks invited
- Sun. 25 Oct. MOVIE...BAREFOOT IN THE  
2000 hrs. PARK..with Jane Fonda.  
Junior Ranks Mess
- Sun. 25 Oct. MOVIE.....DINNER.  
"Hotel"-Officers' Mess
- Sat. 31 Oct. HALLOWEEN.....DANCE  
2100 hrs. Dress.....Costume  
Junior Ranks Mess.
- Sat. 31 Oct. ....OKTOBERFEST...  
Officers Mess.
- Sun. 8 Nov. MOVIE.....DINNER  
"True Grit"  
Officers' Mess
- Sun. 22 Nov. MOVIE.....DINNER  
"Illustrated Man"  
Officers' Mess.

**MART CONT**

Are you tired of living with a drinking problem in you home? Contact Gimli AL-ANON group. For information write P.O. Box 1265, Gimli, Manitoba.

**THE FRAMFARI X-WORD**

S U T P P L Y G O P S M S S E  
C T T N E Y N S R P O I R S O  
P N R U E I R O M V U E R E E  
U Y S A H M C A E E D S I R N  
B S R T N U U M T R T N B O S  
I S O E R S E C O E F I I T C  
I L E M N N P S O O R T O S E  
C M E R T O I O R D U C E B S  
A N A S O V I M R B K C E U I  
T P T T R T A T I T T C P S R  
I Y S E E T S R A I A P O E O  
O T P M I R T K O T L T C T I  
N U A O A S I N N Y S O I L S  
S D N D I N C E L O R T N O C  
C A R D G I O S L D S U E P N

Listed below are the words that you will find hidden in the puzzle above. These words are spelled out in all directions - so look very carefully. By assembling the letters that remain, in order, you will find today's hidden words which will be published next week. This week's hidden words have 30 letters.  
LAST WEEKS ANSWER: Audio-visual Training Aids.

**SUPPLY SECTION**

B SUP O	ORDERS
CARD	POL
CLOTHING	PROCUREMENT
CONTROL	PUBLICATIONS
DISTRIBUTION	RECORD
DOCUMENT	SECRETARY
DUTY	SECTION
ICO	STATIONARY
INFORMATION	STOCK
IOR	STOCKTAKING
ITEMS	STORES
ISSUE	SUB STORES
LOST	SUPERVISOR
MAN	SUPPLY
MATERIEL	
MOVEMENTS	TRANSPORTATION

**MART-CONT**

- For Sale: One two piece Brownie outfit, size 12, scarf, hat and belt for \$6.00 or trade for guide outfit  
Phone: 642-5297
- Wanted: one Brownie uniform, size 10  
Phone: 642-7267.
- Wanted: Brownie uniform, size 8 in good condition. Phone: 7260 after 5.
- Wanted: Guide uniform, size 12. Phone; 642-5297.
- REWARD:.....Missing swords and medallions belonging to Viking Lodge. Reward for information leading to the recovery of these lost items contact S.J. Greenberg or E. Chudd.
- CLEANING LADY - available. Phone Winnipeg Beach - 389-5440.