



Framfari ^{dup}



VOLUME 1 NUMBER 32

C.F.B. GIMLI, ASPEN PARK, MANITOBA

FRIDAY SEPTEMBER 11, 1970

BRIGADIER-GENERAL A.B.C. 'JOHNNY' JOHNSON TAKES SALUTE AT GRADUATION PARADE



Brigadier General Johnson, shown here taking the salute at last Thursday's graduation parade, was later the guest of honour at the Graduation Ball held in honour of the 6904 grads at the Officers' Mess. The General expressed his pleasure at participating in what he reported to be his first pilot graduation ceremony since 1942, the year he received his "wings" at the 14 Service Flying Training School in Aylmer, Ontario. Since that time the General has flown with the RAF's Second Tactical Air Force as well as with various Canadian squadrons and has occupied senior staff positions at Canadian Forces Headquarters, the Directorate of Continental Plans in Ottawa, and the RCAF Staff College. His current appointment is that of Chief of Staff at Air Defence Command, North Bay, Ontario.

CF Photo

SOUND OFF

CFOCS GRADUATION CEREMONIES COURSE 7003 CFB GIMLI BAND

I should like to take this opportunity to thanking you, and through you, the members of the CFB Gimli Band, for the fine contribution the band made in support of the activities marking the Passing Out Parade for Basic Officers' Course 7003. It had appeared for some time that we would not have a band at our Passing Out Parade so we are particularly grateful to you for making the band available to us.

We were most impressed with the band's performance both during the actual parade and during the Mess dinner later that night. It is hard to believe that this was a band made up entirely of volunteers whose primary duties were involved in such tasks as aircraft maintenance, telecommunications and flying instruction. Their enthusiastic support of this school during their stay with us was most impressive and their overall performance was as professional as regular bandsmen.

Please convey to all concerned our sincere thanks for helping CFOCS make the Passing Out Ceremonies for Course 7003 a pleasant and memorable occasion.

L.W. Basham
Lieutenant Colonel
Commandant



CAPT L.W. PINSONNEAULT CD THE BASE BPADO WAS PROMOTED TO MAJOR AFFECTIVE JULY 1, 1970.



The Cobra's Comment

APACHES Have Bought a Mongoose-

Avoid Dark Corners!

THE #1 FTS COBRAS

DON'T MISS IT!
YOU'LL BE SORRY IF YOU DO!

The Dougald Fashion Review not a display of modern clothes, but a colourful and interesting review of styles through the ages, from 1850 to 1970, modelled by attractive Ladies of all ages, in 100 different authentic costumes, including one worn at the court of Queen Victoria.

This Show started 15 years ago and did not intend to carry on for long, but popular opinion has kept it growing and increasing until it has become a Manitoba Institution, and one of the most enjoyed centennial presentations.

Brought to Gimli at great cost by the Gimli "Women's Institute", as a centennial special.

Senior Citizens with Pioneer Pins Free.

Adults: \$1.00 Students: 75¢

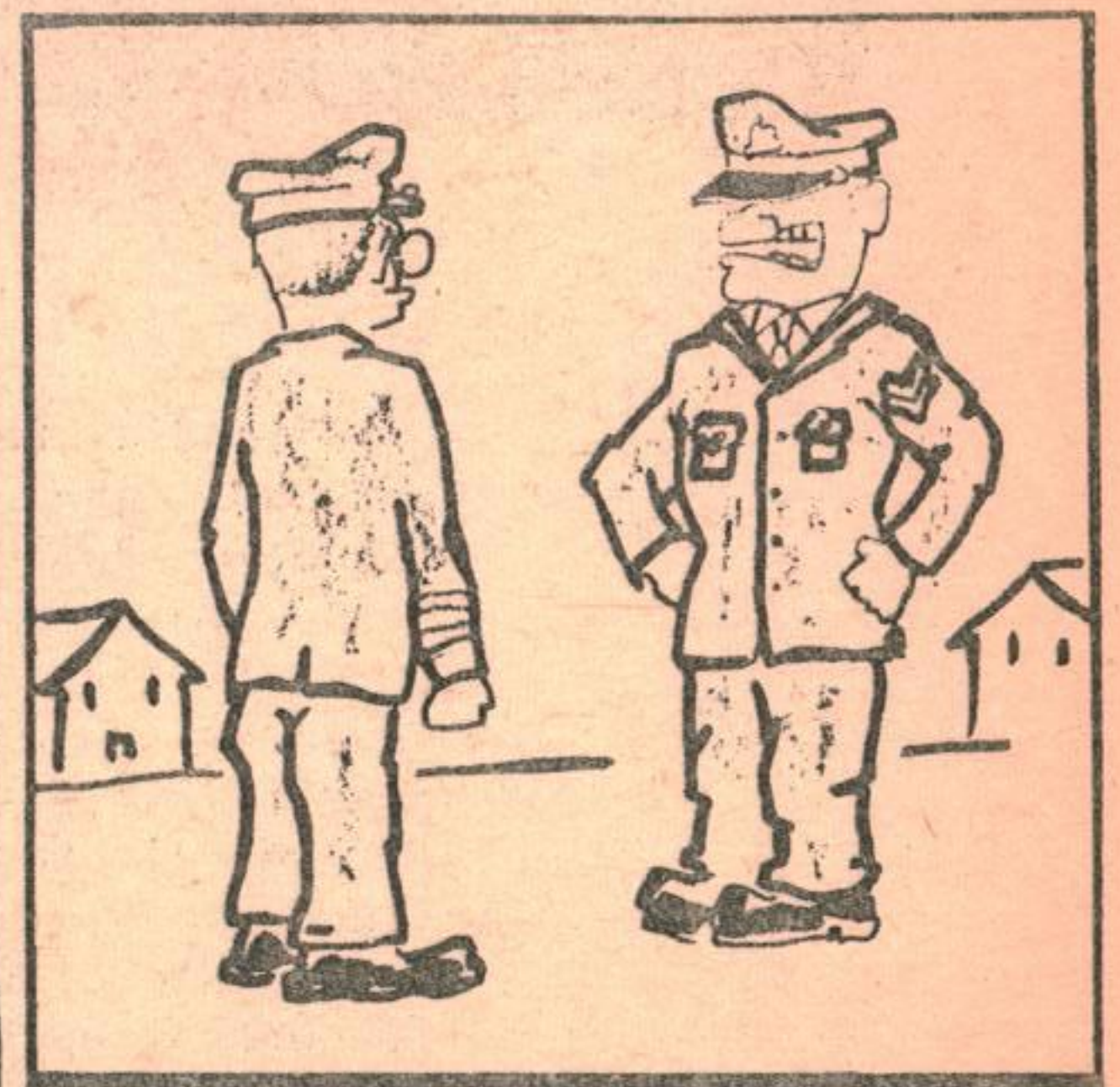
C.F.B. GIMLI STATION THEATRE
FRIDAY, SEPTEMBER 11, at 8:00 P.M.

A two hour Show. Interesting to men, women and children.

APACHE Rumour of the Week

-Lt. Andrew Parker, alias "THE DROOP", volunteered for the DEW LINE because he heard there were no barbers north of the 64th. Submit tenders for the job to Apache 20.

-A 21 is sharpening his clubs for the annual APACHE GOLF TOURNAMENT, held at the NORTHERNAIRE course this afternoon.



I WANT MY OLD UNIFORM BACK...
I JUST GOT SLUGGED IN THE MOUTH
FOR CROSSING A POSTAL PICKET LINE!

GEORGE'S TV 70

CLEARANCE SALE

1 1970 19" COLOR ADMIRAL

\$399.95

642-8138

FRAMFARI is published weekly for distribution on Friday. Opinions expressed are those of the writers and do not necessarily reflect Official Canadian Forces Policy. The Editor reserves the right to edit all copy and advertising to suit paper policy. All correspondence should be addressed to: Editor, Framfari

Aspen Park, Manitoba
Phone: 642-5151 - L126R2

Deadline for all copy: 2:00 pm Monday

PUBLISHER
....Col. J.F. Dunlop
Base Commander

BUS. & PROD. MGR.
....Maj. A.C. Platz -L57

EDITOR
....J.F. Bennett -L154

SPORTS EDITOR
....C. Potter -L37

WOMEN'S EDITOR
....Mrs. Betty Bennett -7964

ADVERTISING MANAGER
.... K.C. Birch -L 37

CONSUMERS NEWS AND VIEW

If you are in the market for a washing machine, there are several types to choose from - automatics, wringer washers or washer-spin-dryers.

In rural areas or where plumbing facilities may not be adequate or if water shortage is a problem, the wringer washer which re-uses wash water and the washer-spin-dryer which has a low total water requirement deserves consideration.

Wringer washers are still widely used but the newer washer-spin-dryers are gaining in popularity. They consist of one tub with the washer on one side and the spin-dryer adjacent. The spinner in this type whirls at high speed to extract water from one load while another is being washed. The water goes back into the washer or is drained. In most models, the spinner can be used for rinsing. No special plumbing arrangements are required. The water supply comes from an ordinary faucet which should have a threaded fitting to take the water hose. This type of washer is usually more expensive than the wringer models and takes up a bit more floor space.

Automatic washers account for approximately half of the total sales of washing machines in Canada and prices can vary greatly. Naturally, the more extras it has, the higher the cost.

For the family with few wash and wear or synthetic fabrics to care for, the economy model with the minimum of controls could be adequate.

The middle-of-the-line washers with cycle variations which are suitable for synthetics include three wash-water temperatures (cold, warm and hot) and two agitator speeds (normal and gentle) and the same two spin speeds.

The deluxe models feature automatic dispensers and other special features. The added attractions can include dispensers for bleach, fabric softeners and rinse conditioners. Another popular extra is a suds-saving feature which permits the re-use of the same wash water for more than one load. The water will not be as hot or clean for the second load and you may have to add more soap or detergent but it can mean a substantial saving on the cleaning product used. These models are sometimes called "programmed" washers. The dial has a choice of selections with one single selection providing the proper cycle

and heat setting for the type of fabric and load to be washed.

There are also partially programmed machines which permit more washing flexibility for special washing needs.

When you budget for an automatic washer, remember to allow for the charges for installing the necessary plumbing and the 3-prong 115-120 volt outlet.

It is important to take the time to read fully the guarantee or warranty that comes with the washer. It should be for at least a year, and more for transmission parts. Ask about the guarantee on the whole equipment and on parts. Make sure there is a service centre available to you for the particular model you buy.

Read the manual that comes with your new washer. Reputable manufacturers put a lot of time and money into the manual and the smart customer will read it thoroughly and follow instructions, no matter how simple and obvious they may appear. Longer life for the machine and better washes will be the result.

For safety's sake, whichever type of washer you decide to buy, it should be equipped with the 3-prong plug. This grounds the machine electrically. Be sure the outlet into which it is plugged is properly grounded as well -- in some cases this has not been so. When connecting or disconnecting the cord, stand on a dry floor and be sure your hands are dry. If the floor is unavoidably damp, stand on a dry, rubber floormat. Use an appliance outlet to plug in -- never an ordinary metal light socket. Always grasp the plug, not the cord when you make or break connections; a final point, be sure the appliance bears the Canadian Standards Association (CSA) seal of approval. (If imported, the US Underwriters' Laboratory (UL) should be on it.)

A buying guide on washers is available free in single copies on request to: "Washers", Consumers' Association of Canada, 100 Gloucester St., Ottawa 4.

In the West: contact Mrs. D. Anderson, 126 Cobourg Avenue, Winnipeg 5, Man. Telephone: 533-3204.

CHUDD & SONS

Gimli's CHRYSLER Dealer

SHELL oil products

642 - 5329

DAPPER DAN SAYS:

OTTAWA (CFP) - If your credit card is lost or stolen you can wind up with bills for thousands of dollars within a couple of days.

Changing Times, the Kiplinger Magazine, suggests you keep credit cards close at hand. Don't leave them lying around any more than you would ten-dollar bills.

Check often to make sure you've got 'em all. Destroy those you don't want, or need. When you make a buy, make sure you get your card back.


PROCEDURE

Keep a record of all numbers and issuers of your cards. It makes it easier to notify them in case of loss, along with the where, when, why and how.

Report any loss immediately to the issuer by wire even if you lose a card over a weekend. By Monday morning you might be liable for a huge bill. All credit card companies require written notification of loss. Until you do notify of loss and sometimes for 24 hours after, you are responsible.

INSURANCE

Consider credit insurance. Some insurance companies offer credit-card forgery insurance along with standard homeowners' policies, sometimes charging a little extra for it. Diners' Club offers a policy covering its own card and so do some others. (Contributed to CFP by D.C. Hodgert, Financial Counselling Administrator for the Forces).



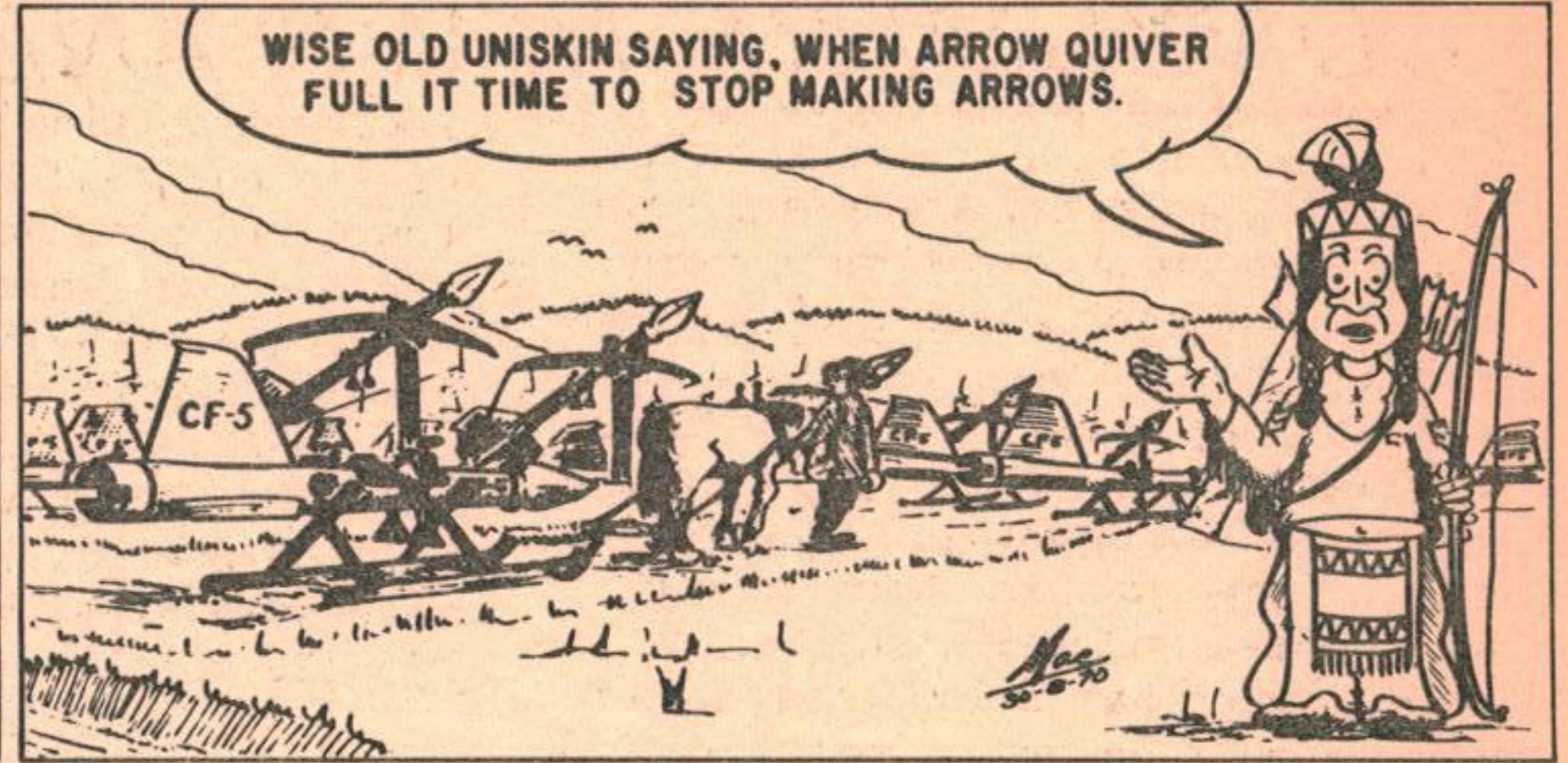
**NO
HIDDEN
CHARGES**

**NO
PENALTIES**

- **ATTRACTIVE SAVINGS PLANS**
(Doubled in event of Death)
- **TERM DEPOSIT CERTIFICATES**
(no penalty for premature withdrawal)
- **FREE CHEQUING FACILITIES**
- **CHARTER FLIGHTS**
- **LOW COST LOANS**
- **INTERNATIONAL CREDIT CARDS**
(including Travellers Cheques)
- **RETURN OF PROFIT TO MEMBERS**

ASTRA CREDIT UNION

UNISKINS by mac



SHOPPING CENTRE FOR LAHR

LAHR, Germany (CFP) - This Canadian NATO base is going to get a new three-quarter million dollar shopping centre.

The new structure is part of a minor building boom in the Lahr-Baden area brought about by the move of Canada's 2,800 man battle group to the Black Forest bases.

The centre, to be paid for out of non-public funds, will combine the bases scattered, on-base shopping facilities under one roof nearer the married quarters.

The tempo of construction has sped up this summer as the troops trickle down from Soest. What were once grassed areas have become asphalt parking space for the formation's vehicles. Army engineers have set up dozens of huts on airfield marguerites where once sleek jet fighters stood ready to scramble.

There are some 150 projects underway or on the drawing board ranging from a \$300 sign upwards. They include a gymnasium, two new wings for the Centennial Club senior NCO kitchen and dining facilities and a crash program to ready taxi strips and tarmacs for the big 707 jets.



FRAMFARI EMPLOYEE'S REST AND RETIREMENT PROGRAM

Amidst peaceful surroundings, our past workers, loyal to the end, rest in dignity and security. This is only one of the many benefits provided to those who have done so much to make our paper what it is today.

GIMLI TAILOR



CARRY & SAVE STORE

81 1st Ave.

For house pick-up PHONE **PERTH'S 642-5326**

*SUITS
and
UNIFORMS*

Made to Measure
four to six weeks

THIS WEEK'S **SPECIAL**

SEPT 12 - SEPT 18

WINTER CLOTH COATS
CHILDREN'S COATS
CAR COATS
PARKAS
SUMMER CLOTH COATS

99¢

SLEEPING BAGS
COMFORTERS
RAINCOATS

\$1.99

DEFENCE BASES - CLOSURES

The announcement that CFB Gimli is to be disbanded has generated some interest in the disposal of property on the Base, and possibly of the Base itself. This article will deal with the basic rules and procedures as set out in service orders, namely; CFP 120, Chap 50, Section 7 and NPF Directive 103/69.

Ownership of the property must first be clearly defined. That which has been purchased with Government funds is usually referred to as public property, and is vested in the Crown. This would include all the buildings, vehicles, stock in the Supply Section, etc. On the other hand, the property, merchandise and equipment which was purchased with mess and institute operating profits, and contributions by members is commonly referred to as Non-Public property and the title is vested in the Base Commander under normal operating conditions. This includes some recreational and sports equipment, the merchandise for resale in Messes and the Exchange, and most of the furniture and furnishings in the Messes and Institutes. Disposal of the Non-Public property will be dealt with first.

Non-Public Property

As soon as disbandment of a Base, station or Unit is announced, title to the non-public property becomes vested in the Chief of Defence Staff and it is the Base Commander's responsibility to ensure that the financial status is maintained. In other words, current expenditures must be limited to current revenue, and mess subscriptions, bar prices and the basis of other sources of revenue should not normally be reduced. All non-public assets are in effect frozen and cannot be disposed of without permission from Higher Authority.

One of the first steps in disposal of non-public property is to make up a schedule of assets which should include all property not for resale, and may also include recreational equipment vested in the Crown. The schedule will describe the items, list their con-

dition and estimated value and other relevant information. It shall also include recommendations for disposal, based on the following order of priority:

- a. transfer to newly established messes or institutes;
- b. sale or transfer to established messes or institutes;
- c. auction to serving personnel for their personal use; and
- d. sale or other local arrangements authorized by the Commander, Command Headquarters at the best prices available.

The schedule is then sent to Command Headquarters for approval and copies are distributed to all Bases /Stations / Units which may be interested in purchasing any of the items listed and bids are invited. Obviously, what we can't sell or transfer to other military units may be sold to serving members by auction, but before you cash in your stocks and bonds to buy up all the property these are two main points to consider. First of all, it may be safely assumed that the other Bases will put in bids on anything useful because they can buy at bargain prices. All we may have left is junk. The second point is that the orders call for an appraisal of the property that is to be auctioned off to the members, and a reserve bid of two thirds of the appraised value is to be entered. So it doesn't sound as if we'll get any bargains after all, but if you stop and consider, it wouldn't be right to conduct a wholesale giveaway program on disbandment. Most of the non-public property here was bought and paid for over the years by many members who came before us. It is not really ours, it was here for our use and in our trust for the benefit of other

service members. When we move to another Base we expect equivalent facilities and hope that the members there have not abused the trust placed in them.

Closing Out Parties

On the lighter side, the Department recognizes that we should say farewell to our friends and neighbours before we scatter to the four corners of the earth. Accordingly, the messes and the Base Fund may hold appropriate social or other functions to mark the occasion, and to make such expenditures from their surplus funds as may be authorized by the Commander of Command Headquarters, but not to exceed:

- a. 2.00 per ordinary and associate member for a mess; and
- b. by a base or station fund, 50 cents for each officer and man on strength of the unit or 500.00, whichever is the lesser.

Therefore, with the permission of our Commander, we may reduce our liquid assets (no pun intended) by the cost of farewell functions within the limits authorized.

Public Property

With regard to disposal of public property, the stock and equipment for which there is a continuing service requirement would normally be transferred to other Bases or Depots through the Logistics organization. The real property and that which cannot be economically transferred would be declared surplus to the requirements of the Department of National Defence and disposed of by the Crown Assets Disposal Corporation (CADC). It should be remembered that this transfer and disposal of property is a regular operating procedure and is carried out at all Bases continuously. The main difference is that on disbandment these activities will have to be accelerated considerably.

It should be understood that the CADC is an autonomous organization and operates under the authority of the Surplus Crown Assets Act. When an item is declared surplus, disposal is out of the hands of DND and entirely up to the CADC. The Corporation may accept bids and make decisions on disposal of the assets without reference to the Dept of National Defence.

SELKIRK LUMBER COMPANY LIMITED

Complete Building Supplies - Concrete Block Manufacturing

SELKIRK 482-3141

WINNIPEG BEACH 389-2024

GIMLI 642-8255

GIMLI PIONEER COMMITTEE

Praying Hands Pens will be on sale at the DUGALD FASHION SHOW 8:00 PM Friday Sept. 11, at the Base Theatre come out and enjoy yourselves. This is our last evening of entertainment for our Pioneers. We can bring them to the show, without admission, if you will support us. This show is of interest to Men, Women and Students. Those of you who have adopted Pioneers bring them along. Those of you who have done nothing so far remember this is your last chance. An interesting performance and a very worthwhile cause.



How to shop from Simpsons-Sears Catalogues

By phone



T
E
L
E
S
H
O
P

T
E
L
E
S
H
O
P

GIMLI
SIMPSON-SEARS CATALOGUE
ORDER OFFICE
642-5161

**GM
CHARGE CARDS**

TAYLOR

PHARMACY

CENTRE
AND
SIXTH
GIMLI

YOUR A. R. P. VALUE CENTRE

**BAN SUPER DRY
Aerosol Spray**

REG \$1.61

SPEC. \$1.09

**PRETZELS
Humpty Dumpty**

REG 39¢

SPEC 33¢

**PANTY HOSE
Super Stretch**

REG \$1.89

SPEC. \$1.19

**COLGATE 100
Mouthwash**

12 OZ

SPEC. 99¢

**NEW DAWN
Hair Coloring
SPECIAL \$1.49**

**PHISOHEX
16 OZ REG \$3.95
SPECIAL \$2.29**

You always save more at

TAYLOR PHARMACY

**A.S.A. Tablets
250 Bottle
SPECIAL 44¢**

**HERSHEY BARS
3 Giant Bars
REG \$1.17
SPECIAL 89¢**

-Pharmacists Pat and Norm Taylor

Bus. phone 642-7470 Evenings 642-5810
Free Delivery Locally to the town of Gimli,
to Evergreen, and to Aspen Park.

The FALCON SMORGASBORD- Sunday Sept. 13th.



Hot Dishes Will Feature **ORIENTAL** Foods.

- Chicken Fried Rice
- Vegetable Chop Suey
- Shrimp Egg Rolls
- Sirloin Tip, Chinese Style
- Sweet & Sour Shrimp in Pineapple
- PLUS Usual Cold Cuts, Salads, etc.

RESERVATIONS RECOMMENDED-
Served 4 pm- 8 pm 642-8868

PATRONIZE OUR ADVERTISERS

TOM-BOY

Meat makes the meal

CANADA UTIL. GR. 3-4 LB. AV.
-FRYING- FRESH or FROZEN
CHICKEN
LB. **33¢**

TOM-BOY EXCELS IN PRODUCE!

RED or BLUE BRAND BEEF
ROUND BONE or CHUCK ROAST LB. **65¢**

WHERE FRIENDLY PEOPLE SAVE YOU MORE!

TOM-BOY "BIG T" FEATURE!
AYLMER TOMATO OR VEGETABLE
SOUP
8 98¢
10 FL. OZ. TINS

YOU SAVE MORE AT A TOM-BOY STORE

TOM-BOY "BIG T" FEATURE!
JELLO
ASSORTED
3oz.
4 PKGS.
35¢

YOU SAVE MORE AT A TOM-BOY STORE

5 LB. POLY BAG - CALIF. VALENCIA
ORANGES \$ **1.49**
Plus Both
ONE DOZEN for
PENCIL CRAYONS

CANNED DRINKS ZING ZIP TOP 10 10 FL. OZ. TINS **99¢**

KETCHUP HEINZ 2 20 FL. OZ. BTL. **89¢**

3.C. - CANADA DOMESTIC
PRUNE PLUMS 4 LBS. **\$1**

RASPBERRIES LIBBYS CANADA FANCY 15oz. PKG. **59¢**

GIMLI TOM-BOY
GIMLI, MAN.

PRICES EFFECTIVE SEPT. 11, 12 & 15, 1970.
WE RESERVE THE RIGHT TO LIMIT QUANTITIES.

TOM-BOY

Westfair Associate

WHAT IS KNOWN ABOUT ALCOHOL ?

FACTS ABOUT ALCOHOL

*Hazards of High-risk Drinking

Some authorities use the terms low-risk and high-risk to distinguish behaviour unlikely to lead to alcoholism from behaviour likely to do so. Statistically it appears that the dividing line comes at, or slightly below, six drinks per day. Signs of developing alcoholism include irregular or unsatisfactory performance at work, loss of interest in work, hobbies, or family; frequent hangovers, blackouts (periods the drinker cannot later recall); and a pattern of alcohol-related traffic accidents (heavy drinkers are much more likely than others to be involved in automobile accidents).

Many heavy drinkers are seeking to escape through the use of a chemical, alcohol, from the responsibility of facing and solving problems. Unfortunately, heavy drinking tends to increase the number and severity of the drinker's problems. Increasing difficulties may cause him to seek chemical relief more often, and gradually the quantity he must drink to escape becomes greater.

Alcoholism is a major factor in loss of employment, disruption of family life, and mistreatment or neglect of children. It costs millions of dollars in lost production, accidents, and personnel turnover. Research studies suggest that the children of alcoholics tend to become maladjusted themselves; if such people use alcohol they are more likely to do so in a hazardous way.

Many heavy drinkers suffer from loss of appetite, vitamin deficiencies, gastritis, infection, skin lesions, and sexual impotence conditions that can usually be corrected by a period of abstinence from alcohol under medical treatment. Some also develop peripheral neuritis, liver damage, or cardiovascular disorders. Severe cases may be characterized by Wernick's syndrome (mental confusion) or Korsakoff's psychosis (loss of memory). In physically dependent

The alcohol in beverages is ethyl alcohol or ethanol. It can be produced naturally (by allowing certain fruits, vegetables, or grains to ferment) or synthetically. In Ontario, the alcohol content of beer is 5 per cent by volume and of distilled spirits (whisky, rum, gin, etc.) 40 per cent. The natural alcohol content of wine ranges from 7 to 14 per cent; fortified wines (sherry, port, vermouth etc.) contain 12 to 20 per cent alcohol. Roughly speaking, a pint of beer, a 4-oz. glass of wine, or a 3-oz. glass of fortified wine contains about the same amount of alcohol as a drink containing 1 1/2 ounces of spirits.

*Short-term Effects:

Alcohol depresses the central nervous system to a degree that depends on amount drunk, the rate of drinking, amount and kind of food in the stomach, and size, tolerance, and emotional state of the drinker. Generally speaking, one or two drinks reduce inhibitions in such a way as to make talk and emotional expression come more easily. Emotions expressed - e.g., pleasure, anger - depend on preceding mental state and the drinker's surroundings.

Taken over a short period, three or four drinks usually produce flushing, dizziness, and poor co-ordination. Still larger doses alter perception and have an even greater effect on behaviour. When body content of alcohol is equivalent to about eight drinks, staggering, blurred vision, and loss of balance are likely. Extremely large doses can kill by knocking out the process that controls breathing. However, this rarely happens: consciousness almost always disappears before a lethal dose is consumed.

*Long-term Effects:

Most people can use moderate amounts of alcohol throughout an entire adult lifetime without apparent damage to physical or mental health, job performance, or family life. However, about 3.5 per cent of Ontario drinkers (about 120,000 people) are victims of alcoholism - dependence on alcohol that is harmful physically and/or psychologically.

persons, withdrawal reactions ranging from shakes to elirium tremens (tremors and hallucinations) occur. Some of these conditions can cause death. Fatal accident and suicide rates are higher for heavy drinkers than for the general population.

*Consequences of Low-risk Drinking

For most people who stay well below their danger point, drinking is a source of social enjoyment and relaxation. Nevertheless, use of alcohol can sometimes create problems even for people who are in no immediate danger of becoming alcoholics.

When inhibitions are markedly reduced, people may say or do things they otherwise would not; sometimes these are a source of embarrassment or worse. Young people are especially vulnerable. Anyone who drinks a great deal over a short period may suffer headache, nausea, and other symptoms of hangover next day. Weight-conscious people must consider that whisky, gin and rum contain about 105 calories per 1 1/2 oz. drink, plus any calories in mixers. A 4-oz. glass of dry white wine contains about 90, a 3-oz. glass of dry sherry 120, a 12-oz. bottle of beer 144 calories, some cocktails much more.

Many traffic accidents are related to use of alcohol. A blood alcohol level of .05 per cent or higher produces driving impairment in most people. In a 160-lb. person this level is usually produced by two ordinary-sized drinks if they are consumed in a short time. The less experience a person has with either drinking or driving, the less alcohol it takes to produce impairment. Many pedestrians hit by cars have high blood alcohol levels.

Combination with tranquilizers, antihistamines, or barbiturates and other sedatives can be dangerous. These drugs add to the effects of alcohol; some may intensify them. Many accidental deaths have been caused by taking too many barbiturate capsules after drinking. Combining alcohol with amphetamines may offset sleepiness produced by alcohol without counteracting other effects of intoxication.

BOWLERS

NEW SERVICE CAREER

TEAMS
MR. & MRS.
SINGLES

OTTAWA (CFP) - Corporals and privates interested in a new service career might consider remunerating to a topographical surveyor or map reproduction technician. Surveyors require Grade 10 Ontario or equivalent, while technicians need Grade 12. Applicants

require a medical profile for their trades, and must be under 35 years old.

Terms of service, if accepted, will be according to CFAO 11-12, paragraph 17, and all applications must reach DPCM/EC before Oct. 26.

DID YOU FORGET ABOUT OUR 70-71 SEASON THERE ARE OPENINGS IN ALL LEAGUES CONTACT YOUR ALLEY MANAGERS BEFORE 16 SEPT

<p>FRYING CHICKENS CANADA GRA 39¢/lb</p> <p>SIDE BACON 1b pkg 65¢</p> <p>BON AMI 55¢</p> <p>JAVEY 128 oz 79¢ 13¢ OFF</p> <p>OXYDOL KING SIZE \$1.69 25¢ OFF</p> <p>JOY LIQUID 24 oz 49¢ 12¢ OFF</p> <p>SCORE 4½ FL OZ. HAIRDRESSING 60¢</p> <p>POST'S CRISPY CRITTERS OR CRISPY NUMBERS 10 3/4 pkg 3/1.00</p> <p>KRAFT THREE 48 FL OZ. MIRACLE WHIP 99¢</p> <p>MAXWELL HOUSE INSTANT COFFEE 10 oz \$1.89</p> <p>DELSEY TISSUE ASST 6 ROLLS 89¢</p>	<p>CHUCK ROAST 69¢ LB.</p> <p>SAUSAGE 55¢ BEEF PORK LB</p> <p>MINCED BEEF 3 lbs \$1.89 1b. 65¢</p> <p>BLADE ROAST 75¢/lb</p> <p>LOWER FOOD PRICES</p> <p>BEANS LIBBY'S 4.95 SOUP CLARK'S HEINZ TOMATO 4.49</p> <p>PRODUCE</p> <table border="1"> <tr> <td>APPLES RED BEARONS 3lbs. 49¢</td> <td>ORANGES VALENCIA 7lbs \$1.00</td> </tr> <tr> <td>BANANAS 4lbs. 59¢</td> <td>GRAPES GREEN or BLACK 2lbs. 69¢</td> </tr> </table> <p>Gord's OPEN DAILY 9 A.M. - 9 P.M.</p> <p>Solo STORES</p> <p>FROZEN FOOD BANQUET 57¢ DINNERS COD FILLETS 49¢ PRICES EFFECTIVE SEPT. 10-16</p>	APPLES RED BEARONS 3lbs. 49¢	ORANGES VALENCIA 7lbs \$1.00	BANANAS 4lbs. 59¢	GRAPES GREEN or BLACK 2lbs. 69¢
APPLES RED BEARONS 3lbs. 49¢	ORANGES VALENCIA 7lbs \$1.00				
BANANAS 4lbs. 59¢	GRAPES GREEN or BLACK 2lbs. 69¢				

DIANE'S BEAUTY SALON at 41 Second Ave. is open for your convenience Tuesday through Saturday.

I AM ALSO OPEN AFTER SUPPER ON TUES. AND WED. NIGHT!!

TINTS, PERMS AND WIG STYLING ARE OUR SPECIALTY.

For appointment call 642-8850

DIANE'S BEAUTY SALON



**BRIGADIER-GENERAL A.B.C. JOHNNY JOHNSON
INSPECTS GRADUATES**



**MAJOR A.C. PLATZ IS AWARDED HIS
A-I CATEGORY**

K&W RENTALS
(McLEODS STORE)

WE RENT

- FURNITURE
- CAMP TRAILERS
- WHEEL BARROWS
- ELECTRIC DRILLS
- ETC

- LADDERS
- APPLIANCES
- SANDERS

*For GOOD Food, and
Good Service
VISIT THE*

Lake Inn RESTAURANT

TIRED OF COOKING??

WHY NOT TRY OUR
NEW TAKE-OUT SERVICE

Next to Gimli Tailor, Gimli

EATONS

CATALOGUE SALES OFFICE

**FASTEST
SERVICE**

IN GIMLI

**Phone
642-5158**

Catalogues available

CATALOGUE
& RETAIL SERVICE

WINNIPEG BEACH **McGREGOR'S DRUGSTORE** Just 9 miles south of Gimli Hiway #9

HRS 9AM - 9PM FEATURING
THURS AFT ^{CLOSED} **—toys** **— PLUS the largest magazine and pocket book selection outside of Winnipeg.**
SUNDAY 11AM - 6PM ^{1PM - 6PM} **—clothing**
—hardware

" WESTERN CANADA'S LARGEST "

DEPARTMENT OF NATIONAL DEFENCE

EDMONTON, August 14, 1970 - A Canadian Forces Base Edmonton soldier has been selected for the 1970 Canadian Parachute Team and appointed as its coach for World Championship Competition in Bled, Yugoslavia, next month.

Having about 1,400 free-fall and 150 military jumps to his credit, he is Sergeant Simon F. Wykeham-Martin, 10343 - 117 Ave., Edmonton. A parachute instructor with the Air Support Operational Training Unit at Griesbach Barracks, he was a member of the Canadian Parachute Team in World Championships in 1962, 64' and 66' Sergeant Wykeham-Martin is

the holder of a bronze and two silver World medals, and he has competed in all Canadian National Parachute championships since 1962. In 1969 he became National champion.

The 32-year-old sergeant is a member of the Board of Directors of the Canadian Sport Parachuting Association, and is one of its three instructor-examiners. He is also a judge of The Federation Aeronautique Internationale.

The Canadian Parachute Team is presently in Tillsonberg, Ont. Its members will leave for Europe early in September, and return to Canada following the competition, September 24, 1970.

Personnel Support Programs



AUTO CLUBS

In the past 6 months 3 new auto clubs have been opened to bring our total number of locations to 76. Auto Clubs are a real favourite with CANEX for two reasons:

- a. they save our customers money; and
- b. contribute substantially to individual Base Funds.

D&PSP MC 3



ROBINSON STORES

All Canadian

OVER 200 STORES OPERATING FROM THE LAKEHEAD TO THE PACIFIC

GIMLI

LIBRARIAN VACANCY

The Base Library will require a part-time librarian effective 21 sep 70. Hours worked by the night librarian are as follows:

Monday - Thursday: 1900 - 2100 hrs.
 Sunday : 1400 - 1600 hrs

The hourly rate paid for this position is \$1.35. Some typing ability is required: previous library experience would be helpful but is not a requirement. Applicants should contact the Base Library Officer by memorandum giving phone number so that an interview can be arranged. No applications will be accepted after Friday, September 18th.



3 Day Sale Event

STARTING

THURSDAY SEPTEMBER 24th

WATCH FOR FULL PAGE AD NEXT WEEK

01014 40

FLIGHT SAFETY AWARDS FOR ACCIDENT FREE INSTRUCTIONAL HOURS



1000 Hours

Maj D.G. McBride



1000 Hours

Lt G.W. Scott



500 Hours

Capt J.D. O'Brien



500 Hours

Lt F.A. Bessette

BRIGADIER-GENERAL A.B.C. 'JOHNNY' JOHNSON AWARDS TROPHIES AT 6904 GRADUATION



Lieutenant J.T. Kupecz

is awarded the
SCROLL OF HONOUR

The over-all objective of the Canadian Armed Forces Flying Training Programme is to produce officers with the highest qualities of airmanship and officer development to fulfil our military commitments both at home and abroad. In keeping with this objective, the ROTP or direct entry graduate, who achieves the highest standing in the academic, flying and officer development phases of this course, is awarded the Scroll of Honour.

Captain J.P. Roberge

is awarded

THE R.W. BLAKE TROPHY

Commencing with the graduation of Course 6708, a new award has been instituted at 1 FTS. The R.W. Blake Trophy will be donated to 1 FTS by Mrs. Blake in memory of her husband, Lt. Richard Blake, killed on flying duty, 13 March 1969. The trophy is awarded to the candidate who best displayed the attributes of attitude, determination, and perseverance, in successfully completing the pilot training course.



Captain O.J. Malcomson

is awarded

THE BARKER TROPHY

The Barker Trophy was instituted by No. 1 FTS in memory of F/L David Barker, CD, who died on duty with the Golden Centennaires, 1967. This trophy is presented to the graduate who fulfils all the requirements of the pilots' course, and by his outstanding ability and diligent application, has gained the distinction of attaining the Highest Standing in all phases of this course.





It has been a wonderful summer no two ways about it. But the time has come for a word or two from the Sports Desk.

Beginning this week on page 15 the Framfari Sports will produce a weekly schedule of sports and facilities available on the Base. Although this week's schedul is by no means all encompassing, it rounds out the current program. If your section or group has been overlooked, please contact me at Loc. 126 r 2.

Eventually it is hoped this notice will include everything from the Library to the Scouts and Guides. Don't hesitate to phone and have your event included.

Effective October 1, the Sports Editorship will be vacant. If anyone is remotely interested, contact me; I'll give a complete rundown on what would be required

of you. The Candidate need not have a thorough knowledge of any particular sport - simply an interest in sports in general.

B Per O



Lt. Brian Ker

Picture above is Lt Brian Ker, Base Gimli's new B Per O.

Brian graduated in May of 1970 from Bueleph University, majoring in Science and Physical Education. Before coming to Gimli Brian

spent 6 weeks on contact training at Petewawa, Onterio.

Although interested in all sports to a greater or lesser degree, Brian is chiefly concerned with wrestling, hockey, basketball and swimming. When one considers that each of these is a "body driving" sport, it is not surprising that physical fitness rates tops with him. If anyone is particularly interested in shaping up the body. Brian is both qualified and willing to help you work out a program. He can be reached daily at Loc. 52.

KOKORO - E JUDO CLUB

There will be a meeting for all judo club members, as well as all others interested at 1900 Hrs. 14 September at the Judo Club in the Rec. Center.

Interested persons who are unable to attend telephone Cpl. Desveaux at Loc. 58. This meeting is for seniors only (17 years old and over). Beginners are welcome.


SUPPORT THE FRAMFARI

ASPEN PARK GOLF CLUB

LAST CHANCE

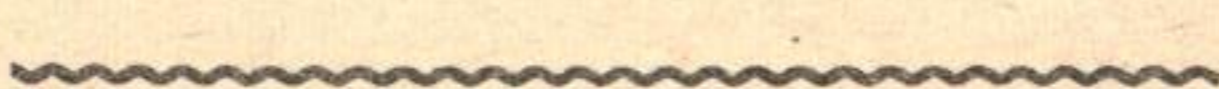
36 HOLE CLUB TOURNAMENT


18 HOLES  SAT 19 SEPT

18 HOLES  SUN 20 SEPT

Men's, Ladies, JR'S (ages 14 - 18) FLIGHTS

Open To All Club Members

PRIZES  for the good and the lucky

FREE  refreshments for all golfers

ENTRY FEE \$1 00

ENTRIES TO BE MADE AT THE PRO SHOP NO LATER THAN NOON THURS 17 SEPT

BASE PHYSICAL RECREATION PROGRAM SEPT 14-20

Sport	Place	Monday	Tuesday	Wednesday	Thursday	Friday	Saturday	Sunday	Contact	
Swimming										
OPEN	B P	1800-1930	1800-1930	1800-1930	1800-1930	1800-1930	1800-1930	Open	Norm Passant at Loc 66	
ADULTS WITH CHILDREN	A O	1930-2030	1930-2030	1930-2030	1930-2030	1930-2030	1930-2030	Open		
ADULTS ONLY	S O	2030-2100	2030-2100	2030-2100	2030-2100	2030-2100	2030-2100	Open		
Scuba	Base Pool				2000-2300			1000-1200	George Pitman at Loc 77	
Bowling Casual	Rec Centre	1800-2300							Cpl Pike at Loc 28	
Judo	Rec Centre	Organizational Meeting to be held 1900 hours 14 September								Cpl Desveaux at Loc 58
		0800-1630 1830-2130	0800-1630 1830-2130	0830-1630	0830-1630 1830-2130	0830-1630	CLOSED	1300-1630 1830-2130		

HOURS of OPERATION of BASE FACILITIES

Facility	Monday	Tuesday	Wednesday	Thursday	Friday	Saturday	Sunday
Exchange Hours	1130-1730	1130-1730	1130-2100	1130-2100	1130-1730	1130-1600	CLOSED
Snack Bar Hours	0930-2200	0930-2200	0930-2200	0930-2200	0930-2200	1000-1700	1500-2200
Library Hours	1300-1700	1300-1700	1300-1700	1300-1700	CLOSED	CLOSED	CLOSED
Hoby Shop Hours	1900-2200	1900-2200	1900-2200	1900-2200	CLOSED	1000-1300	CLOSED
Auto Club Hours	0800-2100	0800-2100	0800-2100	0800-2100	0800-2100	0900-1700	CLOSED

Do you know baseball

by L.J. Burns

Top of the sixth inning, home team leads 3-1 on first and second. The batter lifts a high wind-tossed pop fly between third and home. The umpire calls "Infield Fly If Fair!!" The runners hold there bases. The catcher camps under the ball but it falls past his outstretched mitt onto foul territory. Suddenly a freak hop sends the ball bounding back into fair territory, the catcher pounces on the ball and throws to the third baseman who relays it to second and claims a double play.

Question:

If you were the umpire how would you rule?

Answer:

Infield fly and the batter only is out.

We have a 2-2 tie, with one out, runners on second and third. The count on the batter is 2 balls and 1 strike, but the score board shows 1 ball 2 strikes. On the next pitch the batter swings and misses. The catcher drops the ball and the batter thinking it a

strike three call, broke for first base. The catcher, confused, throws to first, but the throw is wild and sails into right field. The two runners score, the batter stops at first.

Question:

How would you untangle the situation?

Answer:

The two runs count, but the batter must return to bat with the count 2-2. There is no rule to penalize him. The catcher bears the blame for throwing away a live ball when he should have known better.

BOWLING NEWS

YOUTH BOWLING LEAGUE

Youth bowling will commence on the 25 September this season. The league will be in two sections. Bantams ages 8 to 12 will be bowling on Friday nights. Seniors 13 years and up will bowl Saturday mornings. Membership will be \$1.50 per person, to be paid at the start of season. Persons wishing to join the Youth Bowling League

are to contact Bill Gemmel at 5947 or leave your name at the bowling alleys.

Name

Age

Parent Signature

LADIES BOWLING

Any Ladies who are interested in bowling and have not yet submitted their names may do so by calling any of the following:

- Gabe McKinder - 8320
- Helen King - 7445
- Connie Wilson - 7248

Dedline for entries will be 13 September. Players will be notified by Captains of night and time of bowling.

Kardy's HARDWARE

Your FIRST STOP STORE for

HOUSEWARE-GIFTWARE-PAINT

642-8838



THE 10th HOLE

Aspen Park Golf Club



GIMLI JUNIOR RECORDS ACE

Lee Newporte canned a 3 iron on the 185 yd 8th hole for the first ace of his golfing career. Lee was playing in the Men's Scratch tournament against "yours truly" and I think I was as excited as he was when we realized that the ball had gone into the hole and not over the back of the green as it appeared from the tee box. Playing exceptional golf he put rounds of 36 - 32 for a 68. "Nice golf for a youngster eh".

LADIES WINDUP TOURNAMENT

Ladies don't forget your final event of the year Sat. 12 Sept. "Thats this weekend". Names may be entered at the Pro Shop.

WHATS THE RULE

The golfers eagle putt rolled of the green and into a bunker guarding the front of the green. After examining his lie he declared the ball unplayable, replaced the ball in it's former position on the green, took a one stroke penalty and sunk his putt for a five. Was his action in line with the rules of the

game? He is within his rights to "play his next stroke as nearly as possible at the spot from which the original ball was played adding a penalty stroke", even though the ball was in the bunker.

PRO TIP

To achieve consistently firm and well directed putts the right hand must never dominate over the left on impact. A technique to acquire left hand leadership is what is called "lowing out" the left hand. First, it is extremely important that the elbows, particularly the left elbow, be held close to the body. This will give a straight line from the shoulder to wrist. The club is held in the fingers of the left hand, but the hand itself is somewhat curled under the shaft so you see no knuckles and it's back directly faces the hole. The "curling" is what creates the bowed position that puts the left hand outside the straight line of its arm. Keep the left hand bowed and lead the bow through the ball and to the hole.

GOLF

Registration for Canadian Forces Golf at Clear Lake (Sept. 19-20) will be accepted at Rec. Centre until September 16.

JOB CAMPAIGN

OPENS DOORS

OTTAWA (CFP) - The present employment market in Canada is not good and it will take a great deal of effort for the retiring serviceman to nail down the right job.

Dreamers expect the impossible. They hope employers will seek them out and offer the job they want. Miracles do happen - sometimes, but it's safer to rely on a top-notch job campaign effort.

The purpose of a job campaign is to find as many buyers of your qualifications as possible. The best qualifications in the world are no guarantee of employment if employers don't know about them.

The Fuller brush man who doesn't get a chance to open his case before the housewife is not going to make many sales. To get a job you must get interviews - lots of interviews.

A proven method of getting interviews is the broadcast letter. An outline of training and experience slanted toward the job requirements is directed to penetrate right into the inner office. Once inside that office, you have the drop on the run-of-the-mill applicant.

For every hundred letters you sent out from lists made up yourself, you can count on about six interviews. The interviews are what you want. Use your career resume as a source of material for your letter - but don't send it along at this time. Keep your big guns in reserve.

Try the broadcast letter as part of your job campaign and make that miracle happen.

Servicemen approaching retirement are invited to participate in the Civilian Employment Assistance Programme as outlined in CFAO 56-20. Consult your base personnel selection officer or base personnel educational officer for further details.

ANNOUNCEMENT!

Time to Get Winterized!

-Snow Tires

-Antifreeze

-Excellent Tire Selection

WHERE? _____

BASE AUTO CLUB

WHAT IS KNOWN ABOUT ALCOHOL - CONT

* Treatment:

Medical treatment can help alcoholics who are in severe withdrawal states or who have physical illnesses arising out of their alcoholism; however, most therapists believe that treatment for alcoholism must also take psychological and social factors into account.

WHAT IS NOT KNOWN ABOUT ALCOHOL?

Why do some people become alcoholics? (Although we have a fairly good understanding of the physical processes involved, not enough is known about the psychological aspects).

What determines the dividing line for a particular individual, between low-risk and high-risk drinking?

WHO USES ALCOHOL? WHY?

In our society, people commonly drink to celebrate important events, relax and promote sleep, relieve social or physical discomforts, quench thirst, increase appetite for and enjoyment of food, or make a gettogether more enjoyable.

In Ontario, for instance, about three quarters of the population over the age of 15 uses alcohol beverages to some extent. A 1968 Addiction Research Foundation study indicates that some people under 15 also use alcohol. Of Grade 7 students surveyed, about 23 per cent said they had used alcohol at least once per month during the preceding six months. For Grade 9, the figure was nearly 42 per cent.

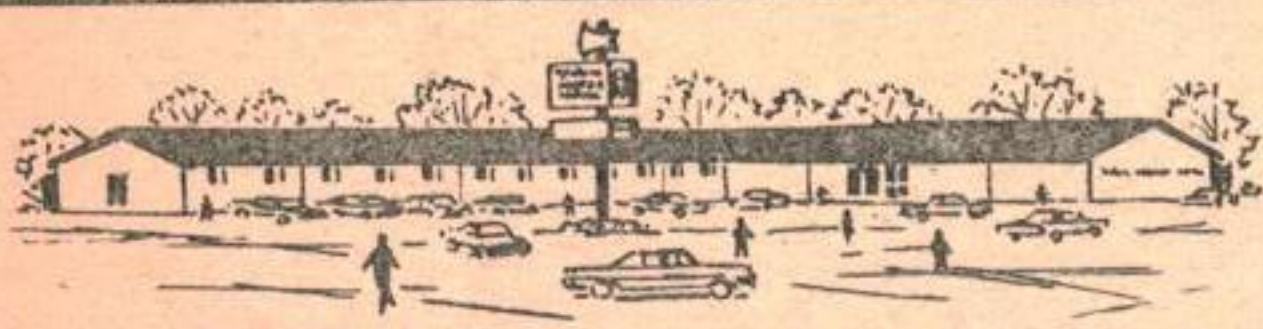
The vast majority of Ontario drinkers in the over -15 group - about 82 per cent of them - drink no more than an average of three pints of beer a day, or their equivalent in wine or spirits.

About 11 per cent drink three to six pints or their equivalent, about 3 1/2 per cent consume six to nine, about 1 1/2 per cent nine to twelve, about 2 per cent more than twelve per day. As a group, men are heavier users of alcohol than women, boys than girls.

ALCOHOL AND THE LAW

Many laws regulate manufacture, possession, and consumption of alcohol. The most relevant of these are well known.

It is illegal to drive with blood alcohol level of .08 per cent or higher. It is also illegal for a driver to refuse to submit to a breathalyzer test. Refusal can result in the same punishment as driving with a .08 level. This law does not, however, make it legal to drive while impaired even if blood alcohol level is lower than .08.



Viking Motor Hotel LTD

PHONE 642-5181

P.O. BOX 131

- 21 Units -
- Air Conditioned -
- Cocktail Lounge -
- Sauna Baths -
- Dining Room -
- Banquet Facilities -
- Beverage Room -

Exotic Dancer Monday & Tuesday
Smorgasbord Sun
BAND Wed, Thr, Fri, & Sat.

Party Ice For Sale

Phone for

reservations

Cor. Hwy.
No. 9 and
Centre St.

GIMLI
Manitoba
Canada

Saving money on food?

- ✓ CHECK OUR WEEKLY SPECIALS!
- ✓ CHECK OUR REGULAR PRICES!
- ✓ CHECK OUR MEAT BARGAINS!

Stock up on frozen foods and
meats at reduced prices.

TIP TOP CLOVER FARM

PHONE US AT 642-5418

LADIES GOLF TOURNAMENT

All lady golf members
of C F B Gimli are invited to
our CLOSING TOURNAMENT
on Saturday 12 Sept. 1970.

Tee-off time is
reserved for 1:00 pm

ENTRY FEE \$1.25

Please come out for

FUN

PRIZES

& FOOD

Meet the Men on the Front Lines

BASE RECREATION

CENTER

The Base Recreation Center, under the guidance of Lt. Brian Ker, and the able direction of the "Rec Specs," serves the purpose of maintaining the physical standard required by the Armed Forces of all its personnel. These pictures show the men involved in daily chores such as ordering new equipment and checking the "fitness" of a fellow staff member.



L T. BRIAN KER, B Per 0



M/CPL JOHN WILLIAMSON



C PL JIM SESAK



Mr. MURRAY EDMAND, JANITOR



"FAILED" LT. KER SHOWS NO FAVORITES AS M/CPL WILLIAMSON CROSSES FINISH LINE.

'POET' CLASS GRADUATES

KINGSTON (CFP) - Electronic technicians watch out! Here's the first graduating class from POET - performance oriented electronic training from CFB Kingston's Communications and Electronics Engineering School.

This happy group of privates didn't sit through the same theory lectures you did.

Their personal oscilloscope and multi-meter were never more than three feet away. Their instruction was 75% practical. They learned their theory through their hands.

Don't ask them how many electrons in a coulomb. They won't know.

Instead ask them to service equipment. Because that's what they learned - trouble-shooting and fault-finding from the first day to the last.

Forget written exams. Nothing matters on this course except "Is it serviceable? Make it serviceable."

The originator of the POET project Eric Collins has great faith in this new crop of graduates. As an electronics instructor for 17 years he'd seen the old way too.

Normally, Mr. Collins feels, a basic electronics graduate needs six months or a year on the job to find out what troubleshooting is all about. But the POET graduate, he says, will be capable of servicing equipment within days.

He hopes that NCOs in their employment areas will give them a chance to show their stuff.

Members of the first graduating class from POET gather around one of the radar units employed on the course. The class graduated on July 14. Seated on the unit is POET supervisor Mr. Eric Collins. Kneeling (left to right) Privates Lawrence Burman, Garry King, Greg Askley, Henry Webster. Standing (left to right) Privates Ray Clements, Leo Camirand, Don Martin, Garry Jebson, and Dan Cafe.



CENTRAL BAKERY

BAKED FRESH DAILY

Sliced Bread

Seed Bread
IRISH & RYE

Pan Bread

Homemade Breads, Buns, & Cakes
Imported Chocolates & Cheeses

HOT PIZZA TO GO - Baked to your order in 15 min.

GIMLI MOVING & STORAGE

FAST FREIGHT AND EXPRESS TO WINNIPEG BEACH, GIMLI

** PACKING ** FURNITURE ** SHIPPING **

GOODS INSURED * ANYWHERE IN CANADA * RELIABLE SERVICE

Gimli Phone 642-5269

Winnipeg Phone 774-2259

MOBCOM

GETS CHOPPER SQNS

OTTAWA (CFP) - Mobile Command will add six new squadrons to inventory on January 1, 1971.

- 444 Tactical Helicopter Squadron at CFB Edmonton
- 427 Tactical Helicopter Squadron at CFB Petawawa
- 430 Tactical Helicopter Squadron at CFB Valcartier
- 422 Tactical Helicopter Squadron at CFB Galetown
- 1 Aircraft Maintenance Squadron at CFB Edmonton
- 2 Aircraft Field Maintenance Squadron at CFB Uplands

On August 1 administration detachments of each squadron were formed.

The squadrons will be equipped with the twin-turbine utility transport CUH-1D 'Iroquois' helicopter. Fifty of these helicopters are on order for delivery in 1971-72.

The 'Iroquois' carries a crew of two, can lift 11 combat equipped troops, cruises at 115 knots and has a three-hour endurance. It can be used in a variety of

roles including aerial resupply, personnel and cargo transport, wirelaying, reconnaissance and medical evacuation.

THE INTERVIEW

COUNTS TOO

OTTAWA (CFP) -- The outside world offers a number of new experiences of which one is the employment interview. Important because the future course of the next fifteen years could be determined by this interview it represents the crunch of all preparations for retirement. What can be done to make it a success?

Interviewers are continually amazed at the number of applicants who drift into job interviews without any apparent preparation and only the vaguest idea of what they are going to say. Their manner says, "Well, here I am." A few simple preparations before the interview can help. Some of the things you can do are finding out the exact place and time of the interview and being certain you have the name of the person conducting the interview. Do some research on the company interviewing you by finding out how old the company is, where its plants,

offices or stores are located, what its growth has been, and how its prospects look for the future. The idea is to give you something to talk about besides yourself.

During the interview the rule is to rely on your own courtesy and good sense. However, be ready for at least one surprise question such as: "What can I do for you?" or "Why are you interested in this company?" If you think they are easy questions to answer without some previous thought, just try it. Keep following his lead and ask some definite questions about the company. The purpose of the interview is to answer two questions uppermost in the mind of the employer; why are you interested and what can you offer. So be prepared.

Servicemen approaching retirement are invited to participate in the Civilian Employment Assistance Programme as outlined in CFAO 56-20. Consult your Base Personnel Selection Officer or Base Personnel Education Officer for further details.

LAKEVIEW Coin Laundry

& DRY CLEANING
66 First Ave.

VIKING PHARMACY

PHARMACISTS: Ernest Stefanson, Keith Eyolfson

PHONE 642-5504 Emergency 642-8359/642-5900 Use your GM charge card WE DELIVER

SECRET Aerosol Deodorant
REG \$1 09 **SPEC. 79¢**

JO CUR Hair Set
REG 49¢ **SPEC. 39¢**

FACELLE ROYALE
Facial Tissue
2/39¢

SHICK
Super Krona—Chrome Blades
5'S REG 89¢ **SPEC. 69¢**

MEADOW GOLD
Ice Cream
REG 89¢ **SPEC. 69¢**

CREST Toothpaste
Super Size REG \$1 59
SUPER SPEC. \$1.09

our winter hours

FRIDAY 9AM - 9PM

SATURDAY 9AM - 6PM

SUN, MON 12NOON - 6PM

TUES, WED, THURS 9AM - 6PM

HEAD & SHOULDERS
Shampoo REG \$1.85
SPEC. \$1.59

SUDDEN BEAUTY
Hair Spray REG \$1 09
SPEC. 89¢

COME IN AND SEE OUR SELECTION OF VITAMINS FOR THE WINTER SEASONS.

CO-OP INSURANCE

AUTO - FIRE - MOTORCYCLE
3, 6 & 12 Month Policies

Issued Immediately
INSURANCE AT COST

PLUS EXTRA BENEFITS

ALL military personnel
insurable

Agent: J.B. Heidinger
85 5th Ave.

642-8347

AIRCREW REUNION PLANNED

OTTAWA (CFP) - Now Hear this!
A commonwealth wartime air-
crew reunion will be held in
Winnipeg September 24-27 inclusive.

Sponsored by the wartime pi-
lots and observers association
the reunion will be held in con-
junction with Manitoba's centen-
nial celebrations.

All wartime flyers of any war
are invited regardless of rank or
aircrew speciality. Transporta-
tion to and from Winnipeg will be,
depending on the demand, by Air
Transport Command scheduled
flights. Those wishing service
flights are advised to forward
their name, and CFB location to
CFHQ, Attn: CP, by Aug. 28, 1970.

The reunion cost including
four nights hotel accommodation
will be \$100 a single and \$140
for double occupancy; wives are
also invited.

For further details write to
"Reunion", Box 1702, General Post
Office, Winnipeg 1, Man.

Actor Richard Burton, Douglas
Bader and other illustrious people
have been invited. During the war
Mr. Burton was pilottrainee in
Canada under the British Common-
wealth Air Training Plan. Douglas
Bader, of course, was a famed
Spitfire pilot.

EVENING COURSES GCHS

The deadline for applications
to reach the University of Manitoba
is 17 September. Application forms
and further information are availa-
ble on the Base from the BITO and
in Gimli from the School Division
Office on Centre Street.

PSYCHOLOGY

120

APPLICANTS

Persons intersted in taking
high school courses in the even-
ing at GCHS this year should at-
tend the registration meeting to
be held at the High School from
7:00 PM to 9:00 PM Wednesday,
September 16. Please note that
this will be the only registra-
tion meeting held and that those
present will determine which
courses, if any, will be con-
ducted. A minimum of 17 students
is required to conduct a course
as the fees must cover course
costs.

**DON'T PLAN TO JOIN THE COURSE
LATER - IF YOU DON'T ATTEND THE
MEETING YOU MAY JUST FIND THAT
THERE IS NO COURSE TO JOIN.**

Those unable to attend the
meeting may register at the
School Division office on Centre
Street during office hours (9:00
AM - 12:00 AM and 1:00 PM -
5:00 PM) on the 16'th or earlier.

The fee for any course con-
ducted will be \$40.00. Military
personnel should bear in mind
that they are eligible to apply
for re-imbusement of this fee in
accordance with CFAO 9-2 and that
these courses are in the top pri-
ority category for such re-imbur-
sement. Don't put it off another
year. A complete matriculation
standing is invaluable to anyone
who wants to get ahead either in
the Service or out. Sooner or
later we are all going to find
ourselves "out" and looking
through the "Help Wanted" sec-
tion. When you do, don't be a
loser because of your education.
Do something about it now - and
do your future a favour.

NORTH AMERICAN LIFE ASSURANCE COMPANY A Canadian Mutual Company

*Providing programing,
consulting and service*

FOR

ALL TYPES OF INSURANCE

*Visiting Base Library,
CFB Gimli, on Mondays.*

G.F. (Kelly) Laliberte

I. (IKE) Chamish

*219 Kennedy St.
Winnipeg, WH. 3-1526.*

Shop and Save at WAYNE'S IGA

The Store That Cares

Groceries

Table Rite

Redbrand Steer

Beef & Table

Fresh Produce

CENTRE STREET GIMLI

CO-OP INSURANCE

*We deal in AUTO, HOME
FURNISHING and CASUALTY INSURANCE*

Mrs. Rae Valgardson

GIMLI CREDIT UNION

10 am to 4pm

Phone 642-5028 or
642-5878 after 5 pm

GIMLI HOTEL (The Whitehouse)

OVERNIGHT ACCOMODATION
REASONABLE RATES

ENTERTAINMENT

WED TO SAT

OUR LADY OF LORETTO CHAPEL
CFB GIMLI, ASPEN PARK, MAN

YOUR CHAPLAIN:

Major (REV.) J. Georges Savoie,
B.A.; LPh.; BTh.
PHONE: 156 Ring 1

MASSES:

Sunday - 0900 Hours.
- 1115 Hours.
Weekdays - 1700 Hours.

CONFESSIONS:

Saturday - 1600 to 1700
Hours.

Before each Mass and when-
ever you feel like it. We
Will try to accommodate
everyone.

BAPTISMS:

By Appointments. Usually on
Sunday.

MARRIAGES:

1. Give two month notice to
your Chaplain.
2. For a Mixed Marriage -
Four month notice would be
preferable since the Non-
Catholic party needs to
take a few instructions
about the Catholic Faith.

C.W.L.:

Meeting every third (3rd)
Tuesday of the month, at
8:00 P.M.

ALTAR SERVERS:

Meeting every second (2nd)
Wednesday of the month, at
4:15 P.M.

Rev. J.S. Cameron
Phone: 156 r 2

SUNDAY - 13 September 1970
10:00 A.M.- DIVINE WORSHIP

Padre Hilton will be on
Annual Leave from 8 to 25 Sept.70.
Rev. J.S.Cameron of ST. Augustine's
Anglican Church, Gimli, will be
replacing him during that period.

PROTESTANT CHAPEL GUILD MEETING

THERE WILL BE A MEETING OF THE
PROTESTANT CHAPEL GUILD ON THE
16 SEPTEMBER AT 8:15

WHY ALL THE FUSS ABOUT POLLUTION

Ecologists have made it plain
that man's pollution and destruc-
tion of his natural environment
poses a grave threat not only to
the quality of all life on earth,
but even to its continued exist-
ence.

The air we breathe is fouled
by the combustion of fossil fuels;
our water is contaminated by pes-
ticides, phosphate-bearing deter-
gents and synthetic fertilizers,
as well as by untreated sewage
and industrial wastes; arable soil
is being eroded by deforestation
and destroyed by our highways and
cities. And now the shipwrecks of
mammoth tankers threaten to de-
spoil the oceans -- the keystones
of life on this planet.

In the face of this grave pro-
blem of pollution, the Church dare
not evade nor deny its responsi-
bility. We Have taught man to
celebrate his dominion over all
things without fostering a due
sense of humility, responsibility,
stewardship. We have given unwar-
ranted support to the belief that
man could lord it over nature, as
if it were a limitless reservoir
of raw materials to be exploited
for his own benefit and profit.
We have exulted in the accele-
rating material benefits which
technology has afforded, heedless
of the extent to which was being
plundered, her resources deplet-
ed, her beneficent gifts squan-
dered and her vitality sapped by
our blindness, our arrogance, our
greed.

This folly must be ended,
amends must be made, disaster must
be avoided. We in the Church
acknowledging our errors, must
work and pray with a new under-
standing of our stewardship for
the boundies of nature. Our ac-
countability of God and our res-
ponsibility for other men, in-
cluding generations yet unborn,
demand a vasty enlarged under-
standing of the need to husband
our natural resources, and new
respect for the unity of the
natural world to which we belong.

We call upon our members to
join with all who are concerned
with the quality of human life to
rectify the errors that have
arisen from the foolhardy assump-
tion that men could exploit the
natural world with impunity. We
would foster a new and profound
respect for the workings of nature
as an instrument of God's bounty.

TARGET
STORE

Complete Family

Clothing

642-5246

Tues. to Thurs. 9am-6pm
Friday 9am-7pm
Saturday 9am-6pm



Selkirk
Funeral
Chapel

** serving the Interlake Area
with dedicated service
** 24-hour Ambulance service

Phone 482-6284

Res. 482-5419

209 DUFFERIN AVE.
GARTH CLARY, DIRECTOR SELKIRK, MANITOBA

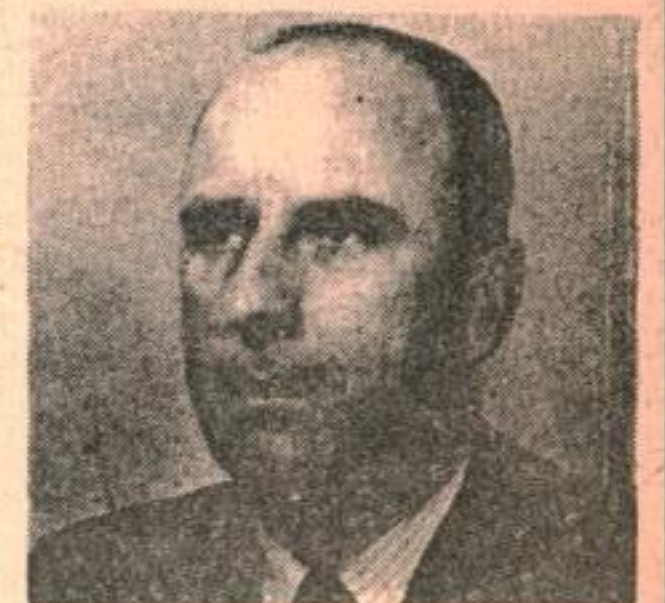
Here's How To
Save On Taxes!

Plus Increase Your Savings
Program. DO YOU HAVE A COMPLETE
PICTURE OF YOUR RETIREMENT BENEFITS
AND REQUIREMENTS?

Why not talk it over with the man
who knows your financial needs and
objectives from a serviceman's
point of view.
Let Investors make your savings
grow faster and save you tax
dollars too!

VISITING BASE LIBRARY EVERY
WED. AFTERNOON.

ERROL L. SMITH
Representative
262 Wallasey St.
WINNIPEG 12, MAN.
Tel. 837-3460



Investors
SYNDICATE LIMITED

The MART

HOUSES

For Sale: 4 Bedroom Home, 129-4th Gimli. Phone: Danny 642-5286.

For Rent: 2 Bedroom House, 95-4th Ave. Gas heat, stove & fridge. Apply Brodies Best Value 98-3rd or Phone: 642-5913.

For Rent: 3 Bedroom House 93-4th Ave., Gimli. Gas heat, stove and fridge. Apply Brodies Best Value 98-3rd or Phone: 642-5913.

AUTOMOBILES

For Sale: 1969 Ford LTD in excellent condition. Power brakes and steering with all other options. Deluxe interior, has been driven 14000 miles. Phone 642-7466 after 6 P.M.

MISCELLANEOUS

Wanting to Buy: One baby crib in good condition, If interested Phone 642-8313.

BICYCLES REPAIRED: All makes, parts available, all work guaranteed. Phone: 642-8247 or call at PMQ 29.

Wanted: Mature responsible Woman to baby sit two children two afternoons a week, in her own home. Please call 8161 after September 14.

Responsible Woman wants to baby sit all day at her home. Reasonable rates. Phone: 8168.

Tenders: Will be received for the Gimli Skating Rink Concession Stand for a period of 1 year Oct. 1, 1970 to Oct. 1, 1971. Duties to include the sweeping of the upstairs floor. The successful tender will be required to sign a contract with the Gimli Rec. Board. Tenders should be mailed to Box 44 Gimli, Man. And clearly marked Tender. Tenders to close Friday 25 September 1970.

For Sale: ITHICA 16 ga. shotgun and case \$70.00, 9 boxes assorted 16 ga. shells \$20.00, Parker Hale .308 rifle \$85.00 Phone: 7425

DANCES, BANQUETS, PARTIES, WEDDINGS



Men of Note
Orchestra
Jim Glover,

Gimli - 642-8167 or Loc 143

FIGHTING THAT

FALL-ING FEELING

The leaves are turning brown, the little angels have gone back to school and peace and quietness have returned to the PMQ area.

Autumn is certainly a season of lovely colours but the Old Dapper is willing to bet that one colour will be conspicuous by its absence in the majority of service members homes this fall.

What colour, you say? The LONG Green, my friends, the lovely medium of exchange that somehow seems to slip through our fingers.

Some of us have extended our budget on visits to interesting places like Man and His World, or the Canadian National Ex. Possibly, we took in the Manitoba hoopla, the Calgary Stampede or the Edmonton Klondike Days, or finally made that trip to the Maritimes.

FALLING LEAVES

Whatever you did this summer, no one in this play-now-pay-later age has devised a plan to stop the bills from rolling in. If you used the old plastic pilferer (credit card) on your trip the oil company will be getting around to letting you know their version of the facts of life.

On top of your vacation bills what about your expenses for the new school term and the many other things that crop up at this time of the year?

CREDIT UNIONS

No doubt, service members like their civilian counterparts will be beating a path to the doors of the financial institutions across this country of ours. Now, what better time to put your increasing sophistication to test? Compare interest rates, shop around for the best credit bargain. For instance, your local military credit union might be an excellent place to discuss your situation.

Remember! The next skirmish in the never ending BATTLE FOR YOUR BUCK will soon be upon us when the merry jingle bells of the cash register start ringing for the Xmas season.

Starlite Theatre

They don't play cops and robbers like they used to!



Today it's different! Somehow, Detective Frank Matthews is on the wrong end of a police dragnet. Meanwhile Paul Sanderson—who has taken lives and taken liberties—takes his time in his mother's kitchen.

GEORGE PEPPARD RICHARD KILEY
COLUMBIA PICTURES Presents
JEAN SEBERG

THURSDAY SEPTEMBER 17

8 PM

110 minutes

Adult

the young are turning to the east to discovery to excitement to love to the GURU



Starring RITA TUSHINGHAM - MICHAEL YORK - UTPAL DUTT - MADHUR JAFFREY
Produced by ISMAIL MERCHANT - JAMES IVORY - R. PRINER, JHARVALA, JAMES IVORY - USTAD VILAYAT KHAN - COLOR BY DE LUXE

FRIDAY SEPTEMBER 18

8 PM

120 minutes

General

FINLEY TV

— Service —

26 6th Ave, Gimli

642-5386

GIMLI HAPPENINGS

If your club or organization wishes to announce an upcoming event call or write B10, C. F.B. Gimli, Aspen Park, Manitoba or Phone: 642-5151 - Local 26.

- Fri 11 Sep. "BACH TO ROCH"
2015 hrs. TRAINING COMMAND BAND
Legislature Bldg.
Winnipeg.
- Fri 11 Sep. DUGALD FASHION REVIEW
2000 hrs. Base Theatre.
- Sat.12 Sep. Ladies GOLF Closing
Tournament, Tee-off
time 9:30 AM.
- Sat.12 Sep. MIXED GOLF
Pte's, Cpl's & Sgt's
C.F.B. Gimli.
- Sun.13 Sep. TURKEY SHOOT
Gimli Curling Club
- Sun.13 Sep. MOVIE "LUV"
2000 hrs. Jr. Ranks Mess
- Wed.16 Sep. THE PROTESTANT CHAPEL
GUILD will meet in
the Annex, 8:15 P.M.
- Thu.17 Sep. THE PROTESTANT CHAPEL
Choir practice
Junior Choir - 6:30 PM
Senior Choir - 7:30 PM
- Sat.19 Sep. DANCE - CASUAL
2030 hrs. Officers' Mess.
- Sat.19 Sep. DANCE to "THE REBELS"
Music to Please All
Ages. Jr. Ranks Mess.
- Sun.20 Sep. MOVIE "WATER HOLE #3"
2000 hrs. Jr. Ranks Mess
- Sat.26 Sep. DANCE
John Nelson's Stereo
Jr. Ranks Mess
- Sat.26 Sep. FALL BALL
1930 hrs "Blue Tones"
Orchestra
Sergeants' Mess
- Sat.26-27 CENTENNIAL AIR SHOW
September St. Andrew's Field.
- Sun.27 Sep. MOVIE "IPRESS FILE"
2000 hrs. Jr. Ranks Mess.
- Sun.27 Sep. HUNTER SAFETY COURSE
To be held at THE
STATION REC. CENTRE
from 10 to 12 AM and
1 to 5 PM Phone Loc.52
- Mon.28 Sep. All SUNDAY SCHOOL
TEACHERS meeting
will be held in the
Chapel Annex at
7:30 P.M.

STARLITE THEATRE

The Starlite Theatre goes back to its regular schedule on the week-end of Sept. 12-13-14, and featuring the picture OLIVER.

Although we have to charge higher admissions prices for this picture there will be a Matinee showing on Sat. 12 Sept. at 1:30 pm at regular prices for children only. Theatre passes will be given in the pop corn.

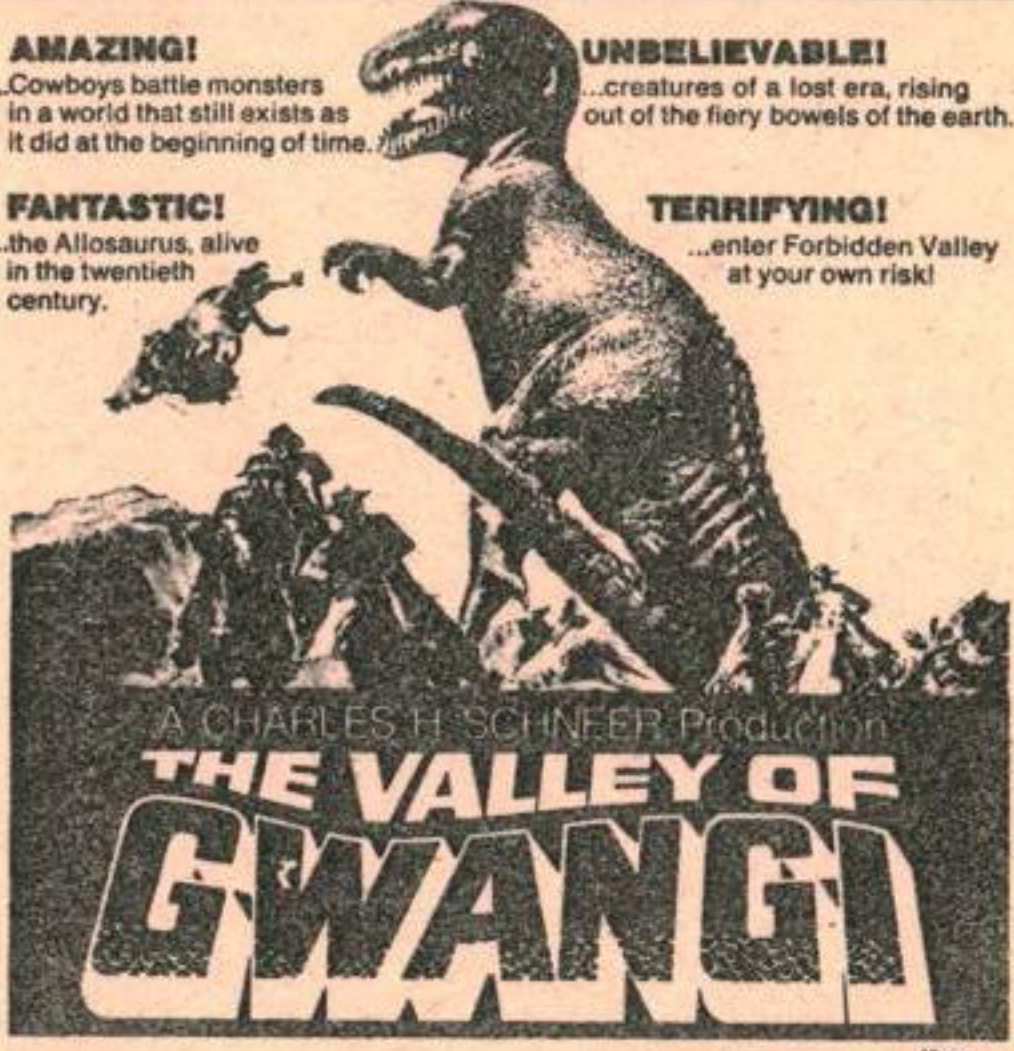
Days of the week that the Theatre will be open are Sun. - Mon. - Thur. - Friday evenings and Saturday afternoon. All evening shows start at 8 o'clock. Sat. Matinees start at 1:30 pm. Check your Framfari for weekly schedules.

AMAZING!
...Cowboys battle monsters
in a world that still exists as
it did at the beginning of time.

UNBELIEVABLE!
...creatures of a lost era, rising
out of the fiery bowels of the earth.

FANTASTIC!
...the Allosaurus, alive
in the twentieth
century.

TERRIFYING!
...enter Forbidden Valley
at your own risk!



A CHARLES H. SCHNEER Production
THE VALLEY OF GWANGI

STARRING: JAMES FRANCISCUS CO-STARRING: GILA GOLAN RICHARD CARLSON

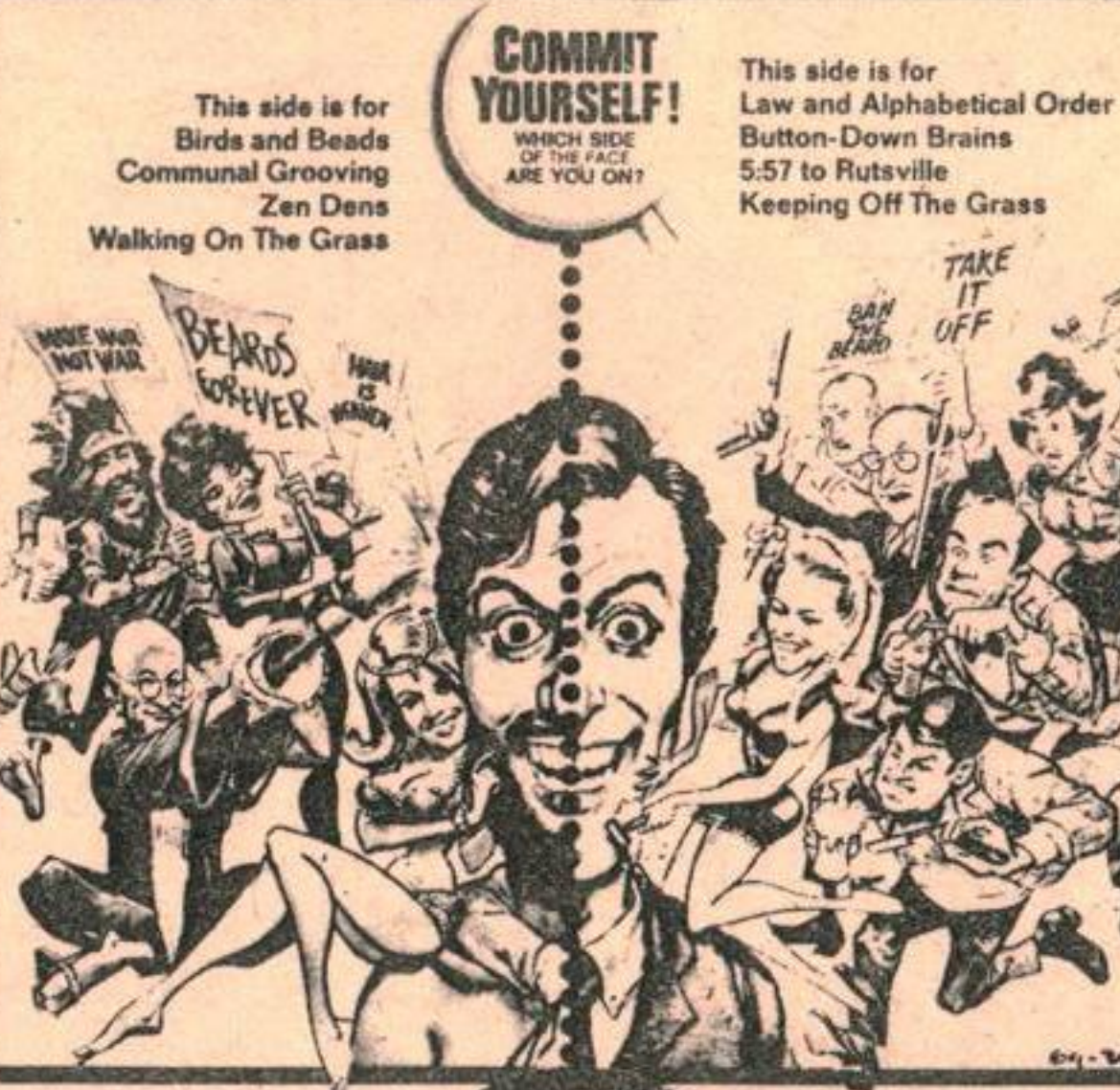
SATURDAY SEPTEMBER 19
1:30 PM
100 minutes General

SATURDAY SEPTEMBER 19
1:30 PM
100 minutes General

COMMIT YOURSELF!
WHICH SIDE OF THE FACE ARE YOU ON?

This side is for
Birds and Beads
Communal Grooving
Zen Dens
Walking On The Grass

This side is for
Law and Alphabetical Order
Button-Down Brains
5:57 to Rutsville
Keeping Off The Grass



THE MIRISCH PRODUCTION COMPANY
DICK VAN DYKE ANGIE DICKINSON

SOME KIND OF A NUT
A GARSON KANIN
WALTER MIRISCH PRODUCTION

ROSEMARY FORSYTH ZOHRA LAMPERT ELLIOT REID JOHNNY MANDEL
WALTER MIRISCH GARSON KANIN COLOR by DeLuxe 50 United Artists

SUNDAY-MONDAY SEPT 20-21
8 PM
100 minutes Adult
Printed Weekly by FRAMPRESS

THE FRAMFARI X-WORD

L T A C O M M I S S I O N S D
O M E D I C A L H E E O W P I
S L S T T F A R C R I A B I S
S L G R A W I N B T T S N H C
E I N L X N A E A E E D S S I
S W I A S N O D R C E E E H P
R T T E I N O I N X C O G P L
U H N F S M O A S U F S A A I
O E U E M A W I R S H Y S R N
C F O O M O E I T T A A S G E
T T C H L E T L A O E P E O E
E C C L F Y V E E O M R M T F
A N A T B E D O Q R O O C O C
G N I R E T S U M E R A R H C
M R O F E S Y A L P S I D P S

Listed below are the words that you will find hidden in the puzzle above. These words are spelled out in all directions - so look very carefully. By assembling the letters that remain, in order, you will find today's hidden words which will be published next week.

This week's hidden words have 19 letters.

LAST WEEK'S ANSWER: MOVEMENT SECTION.

CFAO'S

- | | |
|---------------------------|-----------------------|
| A C C O M M O D A T I O N | M E D I C A L |
| A C C O U N T I N G | M E S S A G E S |
| A C T | M O V E M E N T S |
| A I R C R A F T | P A Y |
| A L L O W A N C E S | P H O T O G R A P H S |
| C O M M I S S I O N S | P R O M O T I O N S |
| C O M P A S S I O N A T E | Q R O |
| C O U R S E S | S E A |
| D E A T H S | S E C U R I T Y |
| D E B T | S H I P S |
| D I S P L A Y S | T A X |
| D I S C I P L I N E | T H E F T |
| F E E | W A R |
| F I N A N C E | W A T E R |
| F I N E | W I L L |
| F O R M | |
| I N D E X | |
| L O S S E S | |

BE A BOOSTER

SUPPORT OUR

ADVERTISERS