



Framfari



VOLUME 1 NUMBER 30

C.F.B. GIMLI, ASPEN PARK, MANITOBA

FRIDAY AUGUST 28, 1970

STOP PRESS SUPPLEMENT

CFB GIMLI TO PHASE OUT 1 SEPT 71

ON THURSDAY AUGUST 27th THE DEPARTMENT OF NATIONAL DEFENCE ANNOUNCED THAT CFB GIMLI AND CFB RIVERS WOULD BE "PHASED OUT" BY 1st SEPT. 1971. THIS IS THE TIME WHEN THE BASE SITE WILL CEASE TO FILL AN ACTIVE MILITARY FUNCTION. REAR PARTIES WILL BE REQUIRED AFTER THAT DATE...

Official Announcement

The Minister of National Defence, the Hon. Leo Cadieux, today announced a government decision to phase out military operations at Canadian Forces' bases at Rivers and Gimli, Man., over the next year.

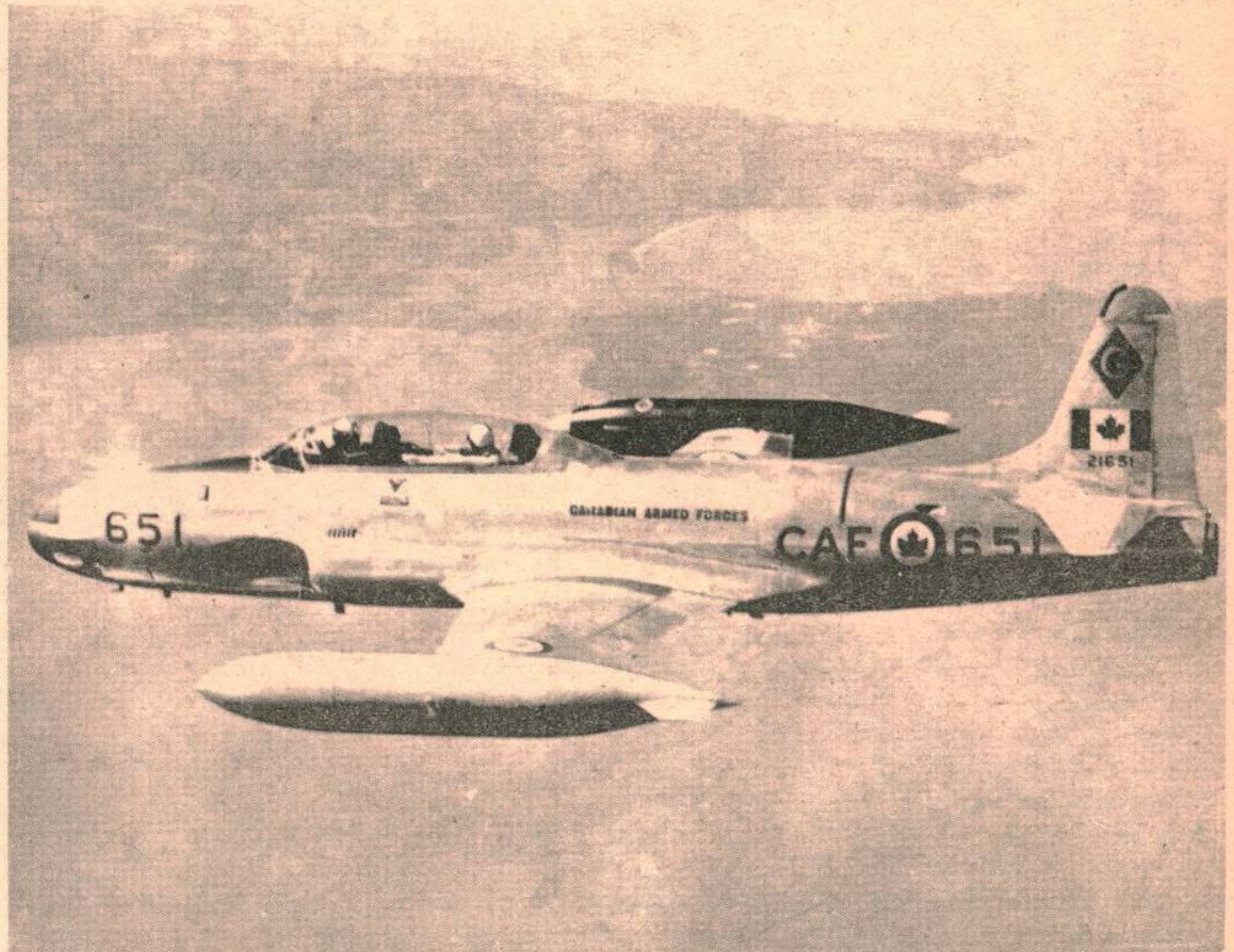
The process will be gradual, extending through to Sept. 1, 1971.

Several government departments will be working with the defence department and local authorities to minimize the disruptive effect on the communities concerned. They are Regional Economic Expansion and Manpower and Immigration. They will also assist civilian employees to find other employment.

Armed Forces personnel at the bases will be posted to vacant positions in other units.

Mr. Cadieux said that factors leading up to the decision were a general reduction in the size of the forces, a change in force priorities and the fixed defence budget.

CFB Rivers, situated approximately 30 miles northwest of Brandon, and CFB Gimli, 55 miles north of Winnipeg, have been used primar-



FLYING SCHOOL MOVES TO COLD LAKE

ily for air training by the Canadian Forces.

A reduction in the pilot training program, to meet the requirements of the new force structure, was announced last November by the defence department.

Other Training Command bases used for aircrew training are at Portage la Prairie and Winnipeg, Man., and Moose Jaw, Sask.

Affected at Rivers are approximately 170 civilian and 300 military personnel, and at Gimli, 200 civilian and 800 military personnel.

Qualified civilian employees at both bases, who are offered and

accept a position at another defence establishment - or elsewhere in the public service -- which requires a move to a new place of employment, will be reimbursed for reasonable expenses involved in the move.

Three bases, two radar stations and a radio installation remain in Manitoba. They are CFB Winnipeg, home of Training Command Headquarters and two major units -- Canadian Forces Air Navigation School and the 2nd Battalion, Princess Patricia's Canadian Light Infantry; CFB Portage La Prairie, home of No. 3 Flying Training School; and CFB Shilo, home of the 3rd Regiment, Royal Canadian Horse

(See "Announcement" next page)..

Aid To Employees

At a Thursday morning meeting Mr. H. R. Mark, Director General Civilian Personnel, briefed Mr. R. Clark, President of UNDE and Mr. J. Malcolmson, the Base Civilian Personnel Officer. He stated that:

"The Department is concerned about your future prospects of employment and as soon as administratively possible, individual action designed to find alternate employment within the Department or elsewhere in the Public Service will commence. Each and every employee will be contacted personally by a Civilian Personnel Officer for this purpose. Prior to taking any action which might culminate in lay-off, the Department's order of release policy will have been applied, and any individual priorities which it provides will have been established.

I can assure you the Department will make every effort to locate a suitable position for you at another departmental location. It may not be possible, however, to find an equivalent position in your present geographical area. If not, we hope to be able to offer some of you a position at another DND establishment which may necessitate your moving from your present location. If you qualify and agree to such an offer, the Department will pay removal expenses in accordance with the removal expense regulations in force at the time.

In addition to the Department's efforts to find suitable positions for you, the Public Service Commission and the Canada Manpower Centres will provide maximum assistance in this matter. Those employees who are scheduled for lay-off will be placed on a Public Service Commission lay-off list and the Commission and Canada Manpower Centres will do everything possible to locate a suitable position in the Public Service or elsewhere."

School To Move

It was announced that #1 Canadian Forces Flying School will be relocated at CFB Cold Lake prior to September 1st, 1971. Base officials stated that personnel will be informed as soon as the date is finalized.

Announcement cont...

Artillery, and an artillery and training base.

The radar stations are located at Beausejour and Gypsumville, and the radio installation at Flin Flon. Total complement of these bases and stations is approximately 4,500 military and 1,500 civilian personnel.

The change announced today means that of the three primary air training bases in Canada, two still remain in Manitoba. They are at Portage La Prairie and Winnipeg. Other flying training bases in the country are in the operational category, and do not exceed more than three in number in any one province.

Efforts to find suitable employment for civilian personnel from Rivers and Gimli are being supported by the Public Service Commission and the Canada Manpower Centre, which will be requested to provide assistance for employees who do not remain with the Department of National Defence.

Canadian Forces Base Rivers has been a military establishment since 1940 when the RCAF set up No. 1 Air Navigation School there. Following the war, Gimli was used as a summer camp for Reserve squadrons and air cadets. In 1950, No. 2 Flying Training School was formed.

In recent years, advanced flying training at Gimli has been carried out by No. 1 Canadian Forces Flying Training School. It will be moved to CFB Cold Lake, in northern Alberta, where facilities already exist.

Base authorities consider it impossible to say just how great an effect the base closure will have on the local community. The total annual military and civilian payroll is over 7.3 million dollars, of which 1.06 million dollars is paid to the 201 civilians employed at the base. In addition approximately 240 service families live in the town and surrounding area with a further 154 families in the Evergreen Housing Development.

It is expected that 800 service personnel will eventually be affected by the phase out. The Canadian taxpayer presently spends 9.2 million dollars on the operation, maintenance and staffing of CFB Gimli.

Civil Authorities Notified

Late Wednesday letters were delivered to local authorities inviting them to a briefing by Col. Dunlop on Thursday morning. The following were notified: Mr. Daniel Sigmundson, Mayor of Gimli; Mr. Archibald Harrison, Mayor of Winnipeg Beach; Mr. Adam Franz, Reeve of the Rural Municipality of Gimli; Mr. John Gottfried, MLA, Selkirk Constituency; Mr. R. Arnason, President of the Gimli Chamber of Commerce; Mr. Eric Stefanson, Manager of the Interlake Development Corporation; Mr. Al Smalley, President of the Gimli Kinsmen Club; Mr. Harold Dalman, President of the Rotary Club; Mr. Ken Bettsworth, Manager of the Bank of Montreal; and Mr. Doug Rowland, MP, Selkirk Constituency.

Base Commander Addresses Troops

At 1000 hours Thursday in the Base Rec Centre Col. J. F. Dunlop addressed a full muster of base personnel. With him was Mr. Kenneth A. McLeod, Director General of Engineering and Construction. Col. Dunlop stated that a plan would be developed to post personnel gradually as they become relieved of their duties. He emphasized that normally at least 90 days notice of posting would be provided and that every effort would be made to keep people advised of possible posting dates. It was also stressed that all base services would continue to be provided for as long as is practically possible. Col. Dunlop urges everyone not to allow the base's high standards to lower during the coming year. He concluded: "In exchange for your continued cooperation, I undertake to ensure that you and your families do not suffer due to the lack of facilities, and as always my office door is open to you to discuss personal problems which you feel cannot be resolved in other ways."

Town Affected

MEET OUR REGIONAL SOCIAL WORKER

The senior Regional Social Work Officer Winnipeg and Staff Officer Social Work Services for Training Command is Captain R.K. Tomlinson. Tomlinson served 12 years in the Armoured Corps before being sent to the University of Manitoba for his Masters degree in social work. At present he is the only soldier in the social work branch. For the past year he has been serving Shilo, Rivers Portage and the South Site at CFB Winnipeg, as well as CFS Gypsumville. Captain Tomlinson has found his experience with the Air Force stations very stimulating and states that he has had no problems in understanding the particular difficulties of those working in an air environment. "One of the characteristics of armour is flexibility", says Captain Tomlinson, "I suppose that is why I find myself as much at home at CFB Gimli as at CFB Shilo".

Captain Tomlinson can easily be identified by his black Armoured Corps beret which he wears with the same pride as a pilot with wings.

Captain Tomlinson will be assisted at Gimli by Cpl Mel Schwanky who is filling an experimental position at the Regional Social Work Office in Winnipeg. It has long been felt that there is a need for trained NCO social work assistants to work with the social work officers. Cpl Schwanky completed the two year social work assistant programme at the Red River Community College in Winnipeg on his own time. In addition, he has had a 250 hour course in financial counselling and has had a great deal of experience working as a volunteer counsellor with people with alcohol and drug problems.

These are our social work officers and the question often comes up "what do they do?" CFAO 56-15 states that "The aim of the social work programme is to achieve a high level of morale, efficiency, and mental health in the Canadian Forces through the provision of a professional social work service. It seeks to ensure that members and dependents receive the assistance which would normally be available to members of the civilian community through established social services. It provides a consultative and a training service in personnel matters where social problems are involved."

Social work officers and civilian social workers employed by the Canadian Forces are professionally qualified to provide a service which includes:

- a. assistance to members and dependents who require professional help with personal problems;

- b. a consultative service to officers commanding commands, commanding officers, and others in supervisory positions concerning individual cases or concerning broader personnel policies where social problems are involved;
- c. The assessment of circumstances and submission of reports and recommendations on cases of compassionate posting, cancellation of posting on compassionate grounds, or other problems as required;
- d. participation in the training of others towards a better understanding of mental health and of social problems and their solutions; and
- e. liaison with community health and welfare agencies, both government and private.

Regional social work officers are qualified professionally to assess, undertake consultation, and make recommendations concerning:

- a. compassionate problems such as those involving an illness or a mental or physical handicap of a service member, dependent, or other close relative;
- b. marital problems;
- c. problems involving excessive use of alcohol;
- d. problems involving family separation due to service requirements;
- e. financial problems where budget counselling is required or where the financial difficulty is a symptom of an underlying personal problem;
- f. problems of a member or dependent involving serious personal adjustment within the service or in society generally such as adjustment to isolation or overseas environments, or to particular environmental situations;
- g. psychiatric problems in which the medical officer asks the social worker to assist through home visits, or through the provision of social histories or background information;
- h. problems involving unmarried parents and;
- j. problems involving the use of civilian social welfare resources such as services for physically handicapped children and mentally retarded children, mental health services, marriage counselling services, adoption and child welfare services, and visiting homemaker services.

These terms of references are very broad and military social workers provide personal counselling for not only the marital, alcohol and adjustment problems, but for problems regarding children, schooling and so on. They are here to help where their professional training in psychology and sociology and the techniques of social work help the individual or his family. How does one get to use these facilities? Individuals wishing to see a social worker may contact the Social Work Officer, the PAdO, or other professionals such as the Medical Officer or Padre who will make the necessary arrangements. Obviously, any request for administrative action must come through the administration and if an interview is required so that administrative action such as compassionate posting may be taken, then the action must be started through the PAdO. Of course, station administration may feel that they wish the RSWO to provide an assessment to assist in career matters, financial counselling, benevolent fund, or similar administrative matters, however, confidential discussions with the RSWO do not result in letters on files. The RSWOs do not report their interviews to the administration for recording as this, of course, would destroy the very reason for their existence in the Service. As a matter of fact, the only persons with access to social work records are social work officers and medical officers. CFAO 56-15 para 12 states "In order to safeguard confidentiality, reports on compassionate and other social welfare situations may, if necessary, be judiciously interpreted but shall not be shown or read to the individual concerned."

Social Work Officers are located at major Headquarters and bases across Canada and overseas, but each is responsible for all social work services to certain units in a given geographical area.

The social work services for Gimli are provided by the Regional Social Work officers who are located in Winnipeg. However, when they visit that station they are there as station personnel and not just interested visitors. In the past year, the social work officer who has provided this service at Gimli has been Major(A) J.J. Young who is leaving the Service early in August on retirement. He is moving to Calgary where he will be Director of the Southern Alberta programme for drug and alcohol problems.

CARNIVAL SCHEDULE

Novelty Nite/Dance

SATURDAY 29 AUGUST 1970
CFB GIMLI REC CENTRE
Admission Free - 18yrs & over

8 pm 3 legged race, wheel barrow race, egg carrying relay, egg tossing, tug of war, mixed up event, beer drinking, log sawing, all fours relay race.

10 pm DANCING - Men Of Note

Field Day

SUNDAY 30 AUGUST 1970
CFB GIMLI - Admission Free

Adult events composed of teams from Officers Mess, Sergeants Mess, Junior Ranks Mess and Town.

11 am CHILDRENS TRACK & FIELD EVENTS up to 13yrs. (Sports Field)

11 am PONY LEAGUE BASEBALL (Pony League Diamond)

11 am CONCESSIONS - Venture Scouts (Sports Field. Beer Tent)

1:30 pm RIFLE SHOOTING 14yrs & over 5 shots 25¢, prize ea. 10 tgts. (25 Yard Range)

1:30 pm FAMIL TRIPS-FLYING CLUB \$3 for 20 minutes. (1 Hangar)

1:30 pm BEER TENT 18yrs & over (Behind Hospital)

ADULT MIXED SOFTBALL -5 innings
1:30 pm Sgts vs Town-gm1, (main diamond)
Offs vs JrRk-gm2, (#2 diamond)
2:30 pm Winners gms1&2 -gm3, (main dmd.)
Losers gms1&2 -gm4, (#2 diamond)
3:30 pm Loser gm3 vs Winner gm4, (mn.dmd)

2 pm ADULT MIXED GOLF - TEE OFF Two-Two Ball Foursomes per Group Shotgun Start (Golf Course)

ADULT MIXED WATER BASKETBALL
2 pm Offs vs Sgts -gm1
2:30 pm JrRk vs Town -gm2
3 pm Winners gms1&2 -gm3
3:30 pm Losers gms1&2 -gm4
4 pm Winner gm4 vs Loser gm3 -gm5 (Rec Centre)

2 pm PONY LEAGUE BASEBALL FINAL (Pony League Diamond)

2 pm MODEL AIRCRAFT DISPLAY (North Hardstand)

3 pm TEEN DANCE -Free Admission Live "Sound" (Rec Centre)

5 pm PENNANT PRESENTATION (Rec Centre)

WE'RE LOOKING FOR AN IDEAL COMPETITOR...

(BUT REALLY, ALL WE WANT IS EVERYONE FROM THE TOWN & THE BASE TO COME ON OUT AND PARTICIPATE!)



C.F.B. GIMLI

SUMMER CARNIVAL

SATURDAY, AUGUST 29

- * NOVELTY NITE & DANCE (eighteen and over)
- * 8pm AT REC CENTRE
- * FREE ADMISSION

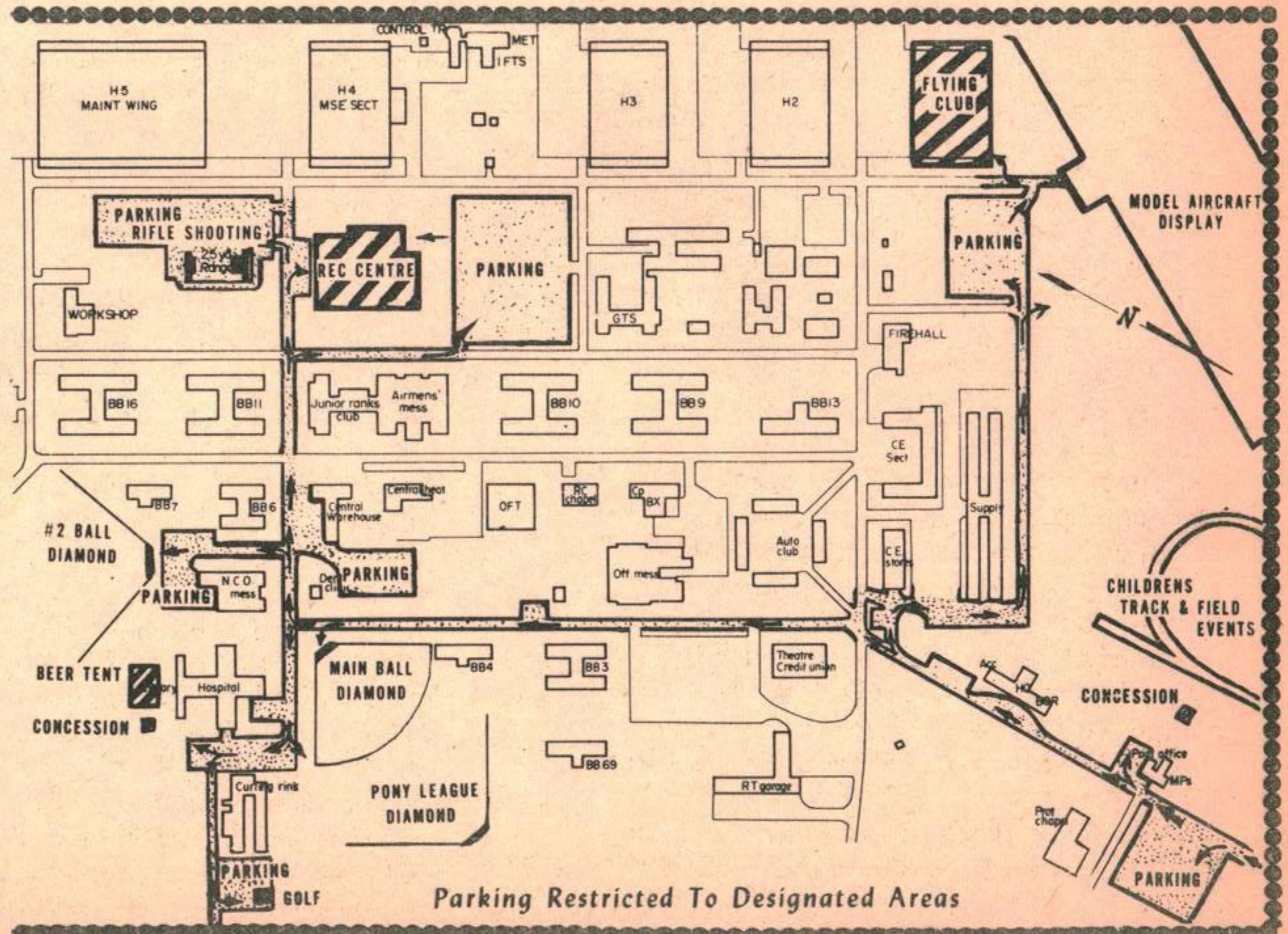
SUNDAY, AUGUST 30

- * CHILDRENS'S TRACK & FIELD 11am
- * PONY LEAGUE BALL TOURNAMENT
- * MIXED ADULT SOFTBALL, GOLF & WATER BASKETBALL
- * TEEN DANCE * BEER TENT
- * RIFLE SHOOTING AND
- * MODEL AIRCRAFT DISPLAY ALL DAY
- * REFRESHMENT BOOTHS BY VENTURE SCOUTS

(see FRAMFARI 28 Aug for schedule)

DON'T FORGET THE KIDDIES! 11am Sunday

CARNIVAL MAP





Framfari



VOLUME 1 NUMBER 30

C.F.B. GIMLI, ASPEN PARK, MANITOBA

FRIDAY AUGUST 28, 1970

GIMLI HOSTS PRAIRIE OPEN



WINNING TEAMHappy faces from the winning Winnipeg team in the Canadian Forces Prairie Open held at Gimli August 21, 22 and 23. Left to right, WO Ken Yarker, MWO Don Notley, Capt. Jim Shirley, Maj. Mike Piercy, Capt. Chuck Boychuk, Capt. Hugh MacKay, Cpl Larry Bertrand and Cpl Amile Psooey.

Bases from across Western Canada were in Gimli last week-end to compete for honors in the Prairie Open Golf tournament. The tourney is an annual event with 45 holes being played over a two day period. Bill Blinston of Shilo and Hugh MacKay of Winnipeg were the first round leaders with a 116 total for 18 holes at Northernaire and 9 holes at Sandy Hook. MacKay took a 7 on the sixth hole at Sandy Hook when his approach shot caught the top of the pines guarding the green and refused to come down. Blinston played steady golf throughout the day relying on his chipping and putting to keep away from bogies.

Saturday evening the golfers were treated to a banquet at the SrNCO's Mess which was open house for the event. The food was excellent "Fletch". Sunday saw the golfers on the Base course for the final 18 holes and as the leaders were coming through the back nine, Cliff Reitzel who had been six strokes of the pace was beginning his charge. At the 17th hole he was three strokes back of MacKay and two behind Blinston. Reitzel parred 17 while MacKay and

Blinston bogied. Two strokes to the leader and one behind Blinston on the 18th Reitzel put his approach ten feet past the flag, Blinston was on six feet short and MacKay shanked his wedge to the side of the green then chipped two feet from the cup. Reitzel made his birdie beating Blinston out of second spot to close one stroke behind MacKay who finished with a par. Individual honors were close throughout both days of play and to those who came to watch this provided a very exciting finish.

Gimli finished third, a little less than expected, however we will give it our best next year. (There are no excuses.)

(CF PHOTO)

SOUND OFF

July 21, 1970

Dear General Carr:

On behalf of the Manitoba government I should like to extend through you to all ranks of your command the grateful appreciation of the government on the splendid co-operation which was given in the planning and achievement of the recent royal tour to Manitoba.

The Manitoba Co-ordinator has told me of the very full co-operation which was given at all times by you and all others who were involved in the preparations for the tour. In particular I know that the planning of the details of transport during the tour together with the service of the drivers was all that might have been desired. The royal guard of honour on July 15th with accompanying royal salute and the work of members of the armed forces in crowd control and security measures were widely admired. Our warm thanks also to those members of the forces who made a valuable contribution by staying on standby duty to be available if needed, and to those who assisted by flying in film and other items for the C.B.C. There were, I know, many other ways in which members of the armed forces co-operated to the full in ensuring the magnificent success which it is universally agreed was achieved by the royal visit. Certainly it proved to be the culmination of the celebration of Manitoba's Centennial Year.

I should be grateful if you could convey to all concerned the warm and deep appreciation of the people and government of Manitoba for the wholehearted support of members of the armed forces.

With kind regards and good wishes to you and all members of your command.

Yours sincerely

Edward Schreyer.

BIRTHS

Corporal and Mrs. Fred Dunk wish to announce the birth of their daughter
WENDY KAREN

5 lbs. 9 oz. on August 12, 1970.
Sister for Russell

"Jake" and Yvette Cummins are proud to announce the arrival of their centennial project...twin daughters,
DENISE & DIANE

at Teulon, Manitoba on the 21 of August 1970. Sisters for Sandra and Debra. Mother and daughters doing fine

Doreen and Doug Burley
Wish to Announce the Birth of
Their Daughter **JENNIFER DOREEN**
Born 20 August 1970, 6 lbs. 6 oz.

Announcement

'Recent observations have been made known to the Base Military Police --- that children have been wandering near and playing in the Engine Test Area, situated South of No. 5 Hangar.

Parents are urged to advise their children that this is an extremely dangerous practice which must cease immediately. The area is 'Out of Bonds' to all unauthorized persons including dependents.'

Draw Winner

The Centennial (DOLL) Cake Draw held on the 23 August in Gimli Park and drawn by Mrs. J. Chalaturnyk was won by Mrs. M. Jonasson. Proceeds of \$28.10 to be donated towards the furnishing of the New Gimli Hospital.

Dugaud Fashion Review

DUGAUD FASHION REVIEW...coming to C.F.B. Gimli Base Theatre, Friday September 11 at 8:00 p.m. Sponsored by the Gimli Womens Institute as a Centennial Project. Admission Price Adults \$1.00, Students 75¢. Senior Citizens with Pioneer Pins -- FREE.

GIMLI KINSMEN

400 CLUB WINNERS

WINNER	AMOUNT
1. Paul Dudar	\$ 100
2. J.P. Thordarson	100
3. W.D. Smith	100
4. Clarice Arnason	100
5. Robert Hewey	100
6. Stan Kovlicki	100
7. Robert Magnusson	100
8. Arnold Harper	100
9. Danny Sigmundson	100
10. Adam Kasuleski	100
11. Fred Sigmundson	100
12. Frank Arnason	100
13. Glen Rudney	<u>1000</u>
14. Paul Olson	100
15. Ann & Walter Luprypa	100
16. R. Thompson	100
17. Mark Carlow	100
18. C.R. Avery	100
19. R. Whitehead	100
20. G. Gendre	100
21. D.K. Robbins	100
22. V.W. Murray	100
23. Al Shaw	100
24. K.E. Craig	100
25. Fred Sigmundson	100
26. Mayvis Sesak	<u>1000</u>
27. Brodie Thordasson	100
28. William Chopek	100
29. Bernard Russen	100

FRAMFARI is published weekly for distribution on Friday. Opinions expressed are those of the writers and do not necessarily reflect Official Canadian Forces Policy. The Editor reserves the right to edit all copy and advertising to suit paper policy. All correspondence should be addressed to: Editor, Framfari

Aspen Park, Manitoba
Phone: 642-5151 - L126R2

Deadline for all copy: 2:00 pm Monday

PUBLISHER
....Col. J.F. Dunlop
Base Commander

BUS. & PROD. MGR.
....Maj. A.C. Platz -L57

EDITOR
....J.F. Bennett -L154

SPORTS EDITOR
....C. Potter -L37

WOMEN'S EDITOR
....Mrs. Betty Bennett -7964

ADVERTISING MANAGER
.... K.C. Birch -L 37

Consumers' News and Views

by
CONSUMERS' ASSOCIATION OF CANADA

For the about-to-be-mother shopping for a new baby presents a bewildering array of choices.

A buying guide on baby's needs in a recent Canadian Consumer magazine suggests that it is not at all necessary to spend a great deal of money on things for your baby -- he will be as happy with clothing and equipment that meets minimum standards as with the most expensive.

The main concern is to keep the baby comfortable and happy. More often than not a baby may be overdressed rather than under-dressed. Their heating system is better developed at birth than the cooling system and babies need more help to keep cool in hot weather than to keep warm at ordinary room temperature.

Everything bought for the baby should be machine washable and dryable and require no ironing. Clothing should be easy to put on and take off. Too much fuss in changing and dressing a baby can make him irritable.

In your planning, the most basic need is diapers. Consider first of all whether or not you will use a diaper service. This is much more expensive but it is certainly more convenient. It may be a worthwhile expenditure depending on how much you value your time and whether you already own the necessary laundry equipment. If you do decide in favor of the diaper service, you will require one dozen diapers for an emergency supply.

If you plan to do your own laundry, you will need three to four dozen diapers. There are several fabrics to choose from: gauze is soft and easy to fold into the small sizes for newborns and it also dries more quickly than other fabrics. Stretch gauze gives the best fit. Flannelette is cheaper and may be slightly more absorbent than gauze. Terry-towelling is used in England and some Canadian mothers find it satisfactory. Paper is used for the disposable diapers. These are far more expensive than cloth and probably are most useful when taking the baby on trips.

When buying the necessary safety pins, remember the ones with plastic heads are less safe than ordinary pins because they break easily. The pins with the steel head that slides up to unfasten and down to hold the pin shut are the most satisfactory.

When it comes to waterproof pants, the plastic ones are easier on the baby than rubber, but some babies develop a rash if they wear them continuously so it might be a good idea to buy just two pair until you know your baby can wear them. These can be used for special occasions even if not all the time. The plastic should not harden if given proper care and this means mild soap, warm water, hand-washing and hand drying with a towel or on a line. Never put plastic pants through the regular wash cycle in your machine or through a wringer.

One of the handiest garments you could have for a baby is sleepers, which are also called playsuits or coveralls. You can use at least six of these but as they are a popular gift, the article suggests that two should be sufficient as basic equipment. Quality is important because the suits are used constantly. The fabric should be very thick and stretchy and without collars. Babies have very short necks and sleepers with collars are uncomfortable. There are many fancy sleeper sets on the market but for the same price, the plain ones are usually better quality. Snap fasteners on sleepers should be closely spaced, especially in the crotch area, and should extend all the way to the ankles. It is better if the snaps have a loose, rather than a tight hold, and set in to a special band of thick twill rather than just a fold of the material because they tend to pull away from the lighter fabric. Examine the snaps carefully; the best ones have three separations in the holding rim

rather than just one. Zippered sleepers certainly are handy but at times it can be difficult to slide a wet zipper.

With the sleepers you may not need to buy shirts, but if you do decide to use a shirt for your baby, consider the stretchy fabric. The tied shirts are more adjustable than the buttoned ones.

Clothing size is difficult. A newborn will swim in a 12-month size but he will grow so fast that most mothers wish they had bought nothing but the 12-month size or larger.

The author of the article on baby's requirements suggests that you would be well advised to stick to the absolute minimum in any buying done before the birth of your baby since you don't know how big the baby will be or what you will receive as gifts. Many purchases can be delayed for months and the delay will give you time to decide your preferences and to spend gradually rather than ruin your budget.

The article is an attempt to clarify the advantages and disadvantages of various choices and to indicate which items are necessary and which might be considered frills. It covers the basic necessities of clothing, cribs, carriages, feeding and bathing equipment and includes a great deal of practical information for the about-to-be-mother.

The buying guide on "Baby's Needs" is free in single copies only by writing: "Baby", Consumers' Association of Canada, 100 Gloucester St., Ottawa 4. In the West - Mrs. D. Anderson, 126 Cobourg Avenue, Winnipeg 5, Man. Phone. 533-3204.

ANNOUNCEMENT!

CANEX Charge Cards

Now Accepted.

Come in and see us...

WHERE? — — —

BASE AUTO CLUB!

INSECT STRIPS AND CHARCOAL NOW AVAILABLE!

NEW SKED TIMETABLES

OTTAWA (CFP) -- Forces timetable planners have put some slack in tight stop points along the CC-137 jet transport's flight routes in Canada and made minor changes to trans-Atlantic schedules.

The revised schedules, already in effect, will bring the big jets into most terminals east of Winnipeg up to 40 minutes earlier. Western legs -- Winnipeg to Comox -- and eastbound Comox to Halifax will arrive at terminals as much as 90 minutes later.

One reason given for the change was that the CC-137s (Boeing 707) were unable to keep to schedules because of short stopovers at busy terminals and vice versa.

Sked 755/756 to Lahr via Dusseldorf and back has been cancelled but will be replaced by 753/754 without a schedule interruption. The UN special, Yukon SFs 307/308, will stop over at Dusseldorf during Lahr's busy rotation period. It will return to Lahr in the fall.

Here are the new sked times as carried in July conforgens 152 and 164:

SF-705 (Fridays)

Arrive	Place	Leave
7:15 a.m.	Trenton	6:20 a.m. (EDT)
10:25 a.m. (ADT)	Ottawa	7:45
	Shearwater (Halifax)	

SF-706 (Fridays)

11:45 a.m. (EDT)	Shearwater	10:55 a.m. (ADT)
1:00 p.m.	Ottawa	12:15
3:35 p.m. (CDT)	Trenton	2:00 p.m.
4:15 p.m. (MST)*	Winnipeg	4:20 p.m.
6:35 p.m.	Edmonton (Namao)	5:00 p.m.
7:35 p.m.	Vancouver	7:05 p.m.
	Comox	

SF-707 (Saturdays)

10:10 a.m.	Comox	9:30 a.m. (PDT)
12:05 p.m. (MST)*	Vancouver	10:40
4:40 p.m. (CDT)	Edmonton (Namao)	12:50 a.m.
8:40 p.m. (EDT)	Winnipeg	5:25 p.m.
10:10 p.m.	Trenton	9:25 p.m.
1:25 a.m. (ADT) (Sunday)	Ottawa	10:40 p.m.
	Shearwater	
* Edmonton (Namao) on standard time year round.	Shearwater	1:55 a.m.
3:00 a.m.	Trenton	

SFs-751/752

9:00 a.m. (local)	Trenton	8:30 p.m. (EDT)
3:00 p.m. (EDT)	Lahr	11:30 a.m. (local)
	Trenton	

Dates operating: August - 16, 18, 19, 22, 23, 25, 26 and 30.
September - 1, 2, 6, 9, 13, 16, 20, 23 and 27.

SFs-753/754

11:00 p.m. (local)	Trenton	10:30 p.m. (EDT)
1:30 p.m. (local)	Dusseldorf	12:30 p.m.
6:30 p.m. (EDT)	Lahr	3:00 p.m.

Dates operating: August - 17, 20, 24, 27, 29 and 31.
September - 3, 5, 7, 10, 14, 17, 22, 24 and 28.

SFs- 307/308 (Yukon)

7:00 a.m. (local)	Trenton	4:00 p.m. (EDT)
3:15 p.m. (local)	Dusseldorf	8:30 a.m. (local)
10:00 p.m. (local)	Nicosia	4:45 p.m. (local)
6:30 a.m. (EDT)	Dusseldorf	11:30 p.m. (local)
	Trenton	

SF-61 (Caribou)

5:35 p.m.	Trenton	4:30 p.m. (EDT)
	Ottawa	

Here's How To Save On Taxes!

Plus Increase Your Savings Program. DO YOU HAVE A COMPLETE PICTURE OF YOUR RETIREMENT BENEFITS AND REQUIREMENTS?

Why not talk it over with the man who knows your financial needs and objectives from a serviceman's point of view.

Let Investors make your savings grow faster and save you tax dollars too!

VISITING BASE LIBRARY EVERY WED. AFTERNOON.

ERROL L. SMITH
Representative
262 Wallasey St.
WINNIPEG 12, MAN.
Tel. 837-3460



Investors
SYNDICATE LIMITED

EATONS

CATALOGUE SALES OFFICE

FASTEST SERVICE

IN GIMLI

Phone
642-5158

Catalogues available

CATALOGUE

& RETAIL SERVICE

K&W RENTALS

(McLEODS STORE)

WE RENT

- FURNITURE
- CAMP TRAILERS
- WHEEL BARROWS
- ELECTRIC DRILLS
- ETC.
- LADDERS
- APPLIANCES
- SANDERS

Discretion

is the better part
of valour.



Shop and Save at WAYNE'S IGA

The Store That Cares

Groceries
Table Rite
Redbrand Steer
Beef & Table
Fresh Produce

CENTRE STREET GIMLI

GIMLI AUTO BODY

TIRES

- G70x14 BELTED Red and White Wall \$28.00
- G70x15 POLYESTER 4 Ply \$27.00
- 825x14 [REDACTED] \$21.00

PRESTONE ANTI FREEZE \$2.39



Call Lawrence
642-5137

NORTH AMERICAN
LIFE ASSURANCE COMPANY
A Canadian Mutual Company

Providing programing,
consulting and service

FOR
ALL TYPES OF INSURANCE

Visiting Base Library,
CFB Gimli, on Mondays.

G.F. (Kelly) Laliberte
I. (IKE) Chamish

289 Kennedy St.
Winnipeg, WH. 3-1526.

The Penthouse Hair Boutique Wig Shoppe

ANNOUNCES *OUR* SUMMER HOURS FOR THE

CONVENIENCE OF OUR CUSTOMERS

During ➤ JULY & AUGUST

MONDAY 1pm - 6pm
WED. & FRI. 9am - 9pm
TUES, THURS, SAT. 9am - 6pm

Hair Stylist
LARRY
CALL 642-5141

SPECIAL during AUG. REG 2.00
Lady Clairol Hair Spray *SPECIAL* 1.49

MEET MY NEIGHBOUR

It was a perfect evening for doing just that. Just the odd mosquito buzzed about my ears as I sat motionless on our back step.

Then it happened! A screen door banged and I opened one eye to see my neighbour swishing through the knee-high grass which flourishes around my back door. He had a small book in one hand and a pencil stub behind one ear. Something was up. I motioned to our only lawn chair with my big toe faking enthusiasm to hear the latest plan to "instant success".

As he sat down my eyes followed the little worn booklet which bore the title "500 ways to beat inflation". So that was it. I had often thought that he stayed awake nights thinking up original corny ideas to make millions. Oh, how I can remember that first time he came out with one of his Lu-Lu's. "Think of it" he has

said "double your money in the first year". Lucky thing for me that I was not completely gullable.

At first it started as small talk like it always did but I knew at the first chance he would bring the conversation around to making money. And he did. Of course I agreed, nodded and ugh-hawed for the better part of an hour while he spilled out another plan to beat rising costs. "It will work" he kept saying as if I did not believe him, (I didn't). By now he was wild with excitement while I was wild with pain from suppressing laughter. "Sounds good" I lied, while he was taking another deep breath. Why offend him?

Shortly after midnight my yawning must have caught his attention as he dismissed himself and we said good-night. I gathered up the old lawn chair and locked the Ford. "He got to be nuts" I mumbled to myself as I watched him carefully closing the windows on his Rolls Royce.

House Hunting

Dapper Dan Says:

OTTAWA (CFP) -- Were you posted this summer and trying to decide whether this is the time to buy a house?

Or, are you nearing the final years of your service and contemplating the purchase of a permanent residence?

There is no doubt that the decision to buy a house is not only a very exciting moment in your life but could be one of your greatest financial outlays. Therefore, choosing and buying a home must be done wisely and carefully.

NEIGHBORHOOD CHECK LIST

These 20 questions are excerpted by permission from Changing Times,



A COMPLETE LINE OF FURNISHINGS FOR THE HOME

ARNASON FURNITURE CO.

FURNITURE AND APPLIANCES

TV SALES AND SERVICE • ELECTROHOME • WESTINGHOUSE • GENERAL ELECTRIC

PHONE 642-7954

BOX 130 GIMLI, MANITOBA

GM CHARGE CARDS

TAYLOR PHARMACY

CENTRE AND SIXTH GIMLI

YOUR A. R. P. VALUE CENTRE

CRAYOLA CRAYONS

48'S REG 79¢ SPEC. 59¢

DELSEY Toilet Tissue Two-2 Roll Packs

SPEC. 69¢

PHOTO ALBUMS

For Instamatic Cameras Expandable

REG \$3.95 SPEC. \$3.39

WILLARD'S WILLOWPACK

REG 45¢ Chocolates

SPEC. 2 for 79¢

LEPAGE'S PASTE

REG 19¢ SPEC. 13¢

ULTRABRITE Toothpaste

Super Size REG \$1.59 SPEC. \$1.19

REVLON

Satin Set Hair Spray REG 98¢ SPEC. 77¢

BAGGIES

50 Utility 73¢ 100 Sandwich 53¢

BAN SUPER DRY

Roll On REG \$1.99 SPEC. \$1.19

RAID HSE and GDN

Bug Killer REG \$1.39 SPEC. 99¢

REMEMBER You always save more at TAYLOR PHARMACY

HOUSE HUNTING CONTINUED

the Kiplinger Magazine (July 1970 issue) Copyright 1970, by the Kiplinger Washington Editors, Inc., 1729 H Street, N.W., Washington, D.C. 2006:

1. Location: How close is it to your job, friends, relatives, the city centre, the business and recreational and cultural facilities you will use regularly and frequently?
Excellent () Fair () Poor ()
2. Appearance: Are the houses and lawns well kept and well spaced? Is the lay of the land pleasing? Are there trees, flowers, green areas?
Excellent () Fair () Poor ()
3. Community Facilities: Is there a good playground within walking distance? A public library? Swimming pool? Tennis courts?
Excellent () Fair () Poor ()
4. Streets: Wide enough? Lighted? In good repair? Gently curved streets, dead ends, cul-de-sacs to discourage through traffic? Right-angle intersections? Off-street parking for resident cars? Sidewalks? Adequate storm drainage?
Excellent () Fair () Poor ()
5. Neighbors: Will you and your family fit in? Are there many children or few? Are there a fair number of people about your age? About your degree of affluence?
Excellent () Fair () Poor ()
6. Public Safety: Is the police and fire protection adequate? Are the firemen fulltime or volunteer? How far to the nearest fire station?
Excellent () Fair () Poor ()
7. Garbage and Trash Disposal: Public or private? How frequent are collections?
Excellent () Fair () Poor ()
8. Water and Sewerage: Water supply public or private? Supply adequate at all seasons? Tasteless? Public sewers and treatment? Or private septic systems? If private, what prospects for public service?
Excellent () Fair () Poor ()
9. Hospitals and Medical Services: Especially in a suburban or newly built area, are they readily available? How adequate?
Excellent () Fair () Poor ()
10. Schools: How do they rate? Where are they located? Any dangerous crossings? Is transportation available if necessary? Cost?

If pertinent, are nurseries or kindergarten at hand?

- Excellent () Fair () Poor ()
11. Church: Is it convenient? Does its program suit your family needs?
Excellent () Fair () Poor ()
 12. Shopping: Types of stores and services? How accessible? Will your wife need a car to get there?
Excellent () Fair () Poor ()
 13. Banks: Is there a handy facility nearby? Are its hours convenient? Any service on Saturdays, evenings?
Excellent () Fair () Poor ()
 14. Recreation, Entertainment: How far to a park, the community center, movies, bowling, golf?
Excellent () Fair () Poor ()
 15. Public Transportation: What kind? How reliable? How frequent is service in rush hours, on week-ends and holidays, during off-hours and evenings? Where are terminals and how do you get to them?
Excellent () Fair () Poor ()
 16. Commuting: How long will it take to get to work and back home? Are routes direct, uncongested? (Make test runs at rush hours and see.) Is your service station on the way to work?
Excellent () Fair () Poor ()
 17. Zoning: Is the neighborhood adequately protected against inappropriate or poorly planned residential development? Are there buffers between and commercial and industrial zones?
Excellent () Fair () Poor ()

18. Nuisances, Hazards: What's the pollution situation? Any smoke, soot, dust, odor, noise? Any nearby installations likely to produce nuisances or hazards, such as factories, airports, heavy duty highways, rail lines, chemical plants, sewage treatment plants?
Excellent () Fair () Poor ()

19. Deed Restrictions: Any unusual ones, common to this area, on how you might use, alter or expand your property?
Excellent () Fair () Poor ()

20. Future Prospects: From what you see of the surrounding areas, does the character of this neighborhood seem likely to remain stable? What will future growth of the city or country do to it? What do official planners expect?
Excellent () Fair () Poor ()

(Provided CFP by D.C. Hodgert, financial counselling administrator for the Canadian Forces)

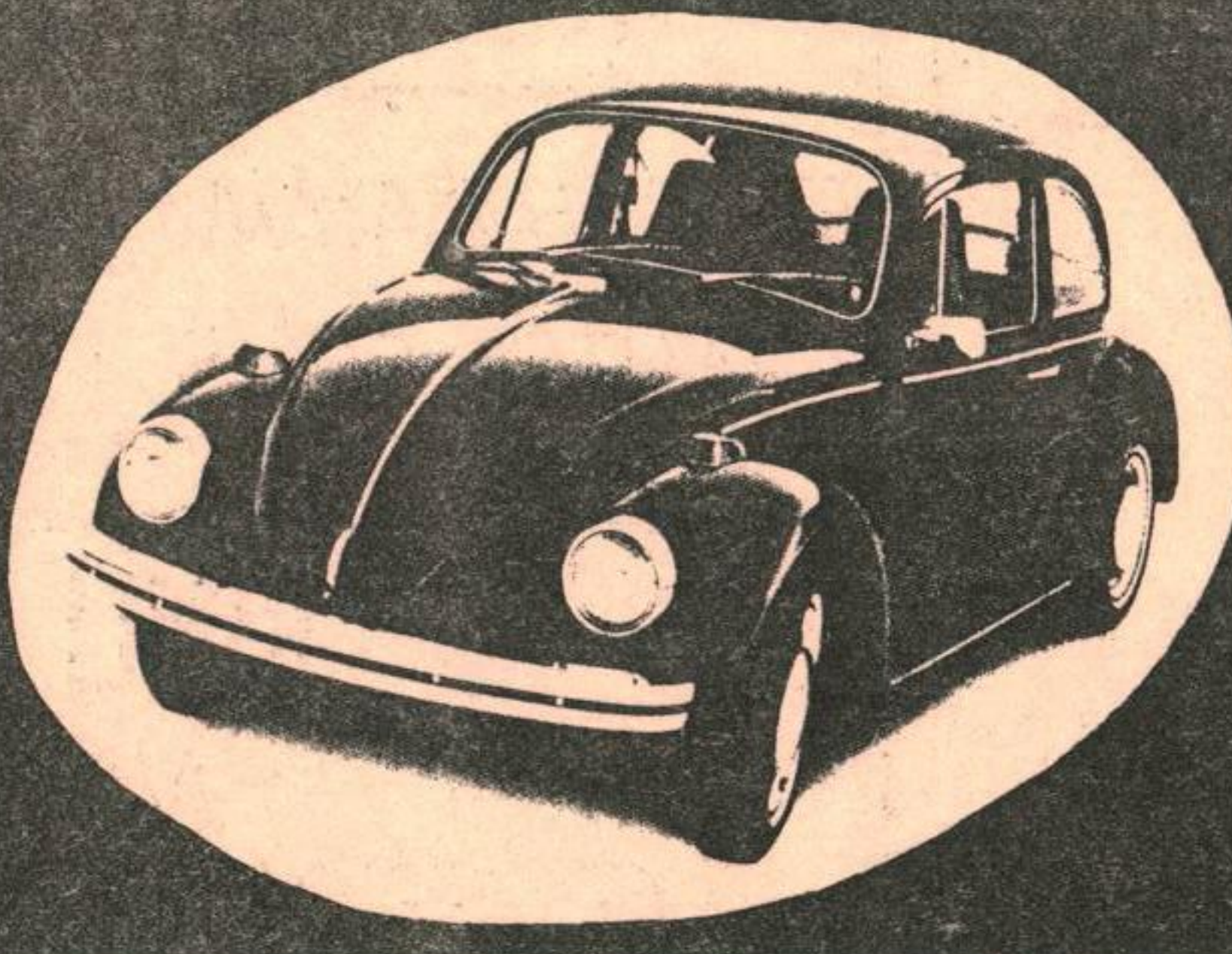
CO-OP INSURANCE

AUTO - FIRE - MOTORCYCLE
3, 6 & 12 Month Policies
Issued Immediately
INSURANCE AT COST
PLUS EXTRA BENEFITS

ALL military personnel
insurable

Agent: J.B. Heidinger
85 5th Ave.

642-8347



Don Robertshaw

SALES REPRESENTATIVE
New & Used Cars
Trucks, buses, Campers

AUTO HAUS

VOLKSWAGEN
276 Colony Ph 772-2401
WINNIPEG 1 MANITOBA

For information on NEW or USED VOLKSWAGENS,
or used cars (any make or model)

Call collect, write or contact personally:-

DON ROBERTSHAW

All Star Game

All stars from the first and second weeks' Canadian Professional Hockey School sessions at Gimli will play an exhibition game Saturday, August 29 at 5:30 p.m. at the Gimli Arena.

These boys are between the age of 15 and 18 and should put on quite a show. All junior coaches are invited to attend and look over these fine young prospects.

The 'FRAMFARI'
Needs People!

TIP TOP CLOVER FARM

YOUR HOME FREEZER
SUPPLIER REPORTS

BEEF has shown considerable improvement in quality and in selection -

PRICES down considerably

PORK a good supply of lean and light sides available.

PRICES show a big drop from this time last year.

Drop in and check our new prices - TIP TOP'S buying program available - custom cutting and lockers available

PHONE 642-5418

BLOOD DONOR CLINIC



Come and give blood Thursday 3 September 1970 - 1000 - 1300 hours (10:00 a.m. to 1:00 p.m.) in the Recreation Centre at C.F.B. Gimli. Everyone over 18 years of age is urged to donate. Donation of blood will not have any effects preventing airmen from going on parade -- quotes our medical officer.

GIMLI HOTEL (The Whitehouse)

OVERNIGHT ACCOMODATION
REASONABLE RATES

ENTERTAINMENT
WED TO SAT

TARGET STORE

Complete Family

Clothing

642-5246

Tues. to Thurs. 9am-6pm
Friday 9am-7pm
Saturday 9am-6pm



CENTRE ST. WEST,
GIMLI

PAUL FIRMAN

642-5007
642-8857

Available now!

1. 1971 GRAND PRIX 28 hp
"THE GOLD ONE"

2. 1971 MINI SNO 15.5hp
"THE LITTLE ONE"

As low as \$500.
at FIRMAN BROS

'Four Seasons'

TRAILERS

Firman Brothers

Bus: 642-8857
Res: Paul Firman 5007

GIMLI DRIVE INN

NOW OPEN
TO SERVE YOU THIS SUMMER
TRY OUR -Chili

- Tubby Chicken
- Hot Dogs & Nips
- Deep Fried Perogies

642-8355 FOR PICK-UP ORDERS

NEED 25 POINTS

FOR FOUR FLIGHTS

OTTAWA (CFP)--Planning on booking priority-four service air in October? if you have less than 25 points forget it.

Movement officials here have issued a canforgen (165 of July 24) placing a 25-point restriction on most Canadian and trans-Atlantic skeds.

Here are the flights affected:
 SFs-one to four--Yukons, coast-to-coast.
 SFs-705 to 708--CC-137 jets, coast-to-coast.
 SFs-30,32,33,34,35 --Cosmopolitans, Trenton-Ottawa-St. Hubert-Trenton; Ottawa-Edmonton-Ottawa;Ottawa-Trenton-Ottawa.

SFs-161-162 -- Trenton-Ottawa--Gatwich and return.

SFs307/308 Trenton-Dusseldorf-Nicosia, Cyprus-Trenton.

SFs-751 to 754 -- Trenton-Dusseldorf-Lahr-Trenton.

One point is allotted for each year of service and an additional point for each rank from one for a lieutenant-general to 14 for a private.

**CRONSHAW'S
 JEWELRY
 ENGRAVING**

(One Day Service)

WATCH REPAIRS
 JEWELRY REPAIRS

642-5039



THE *falcon lounge*
 OF FIRST AVENUE
 GIMLI, MAN.

HOCKEY TRAINING CAMP

GET IN PLAYING CONDITION EARLY AT GIMLI ARENA

AUG 31st-SEPT 5th

- ALL AGE GROUPS FROM 8 YRS UP.
- IDEAL FOR JRS AND PROS.
- MINIMUM 2 HRS / DAY FOR 6 DAYS.

*COST Room & Board incld.:\$50.
 ICE TIME ONLY : 25.*

REGISTER AT
 GIMLI ARENA
 642-5434

OR CANADIAN PROFESSIONAL SPORTS CENTRE
 1195 PEMBINA HWY.,
 FORT GARRY 19
 284-6431

ICE RENTAL \$15.00/hr

The Exciting NEW
HOVEROVER



The HoveRover 2 Seater is a true Air Cushion Vehicle!



Carries you over Land, Water, Swamps, Tidelands, Ice and Snow opening a NEW Concept in year'round recreation. Will climb grades and into areas that are inaccessible by boat or wheels...

The Vehicle for **WORK...SPORT...YOU!**

OVER LAND

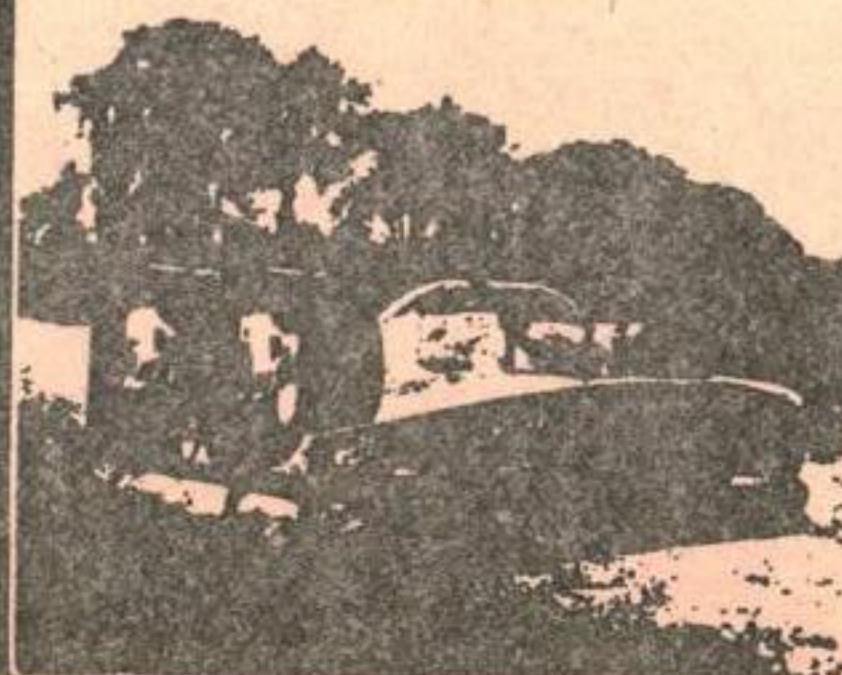
OVER WATER

\$3,995.

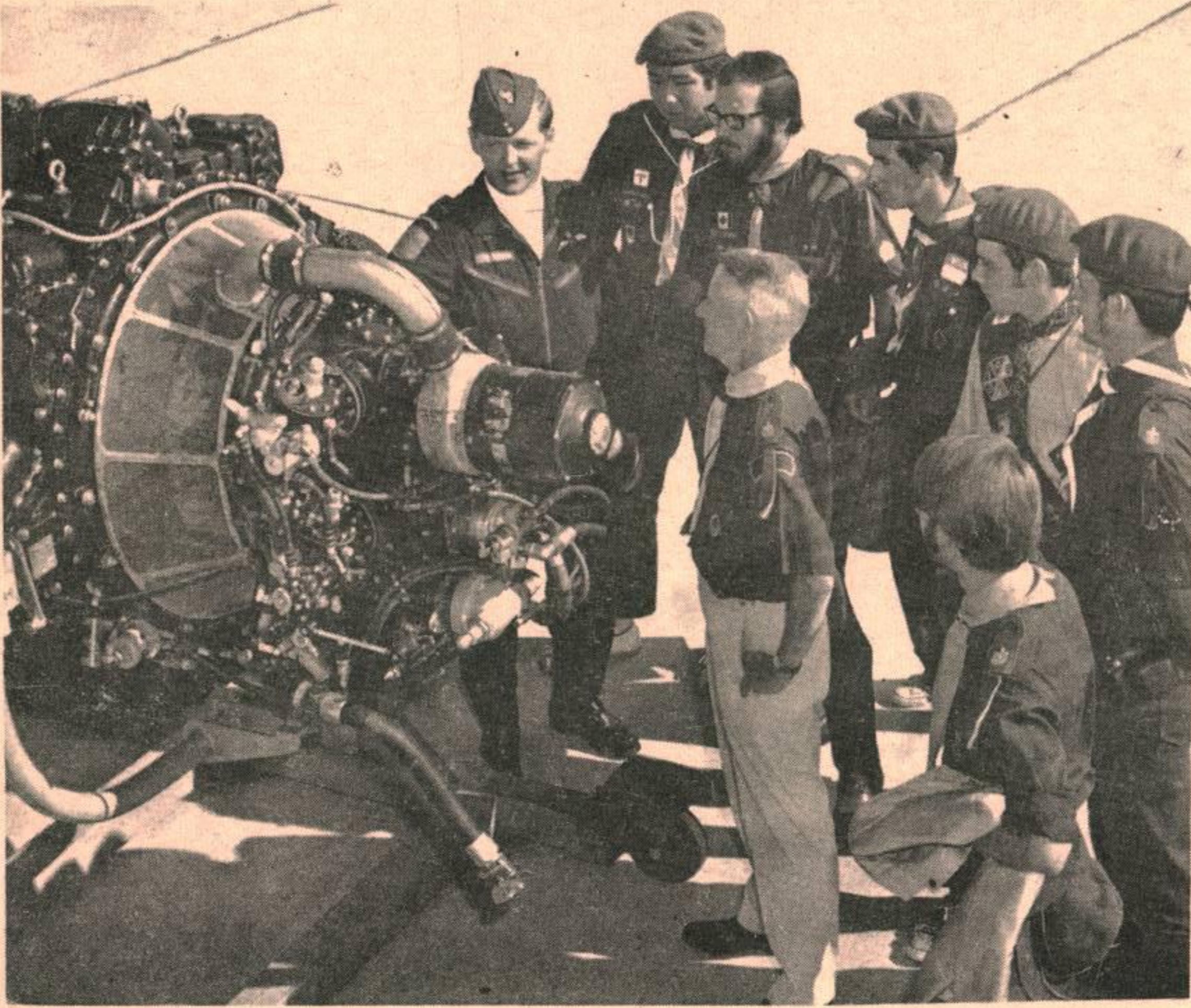
GIMLI HOVEROVER SALES

BOX 1046, GIMLI
 OFFICE 642-7275
 RES 642-5206

F08 OTTAWA



Rover Moot Tours Gimli



5100 LBS. OF THRUST.....Lieutenant Glen Buchanan, left, introduces the Rolls Royce Jet engine used in the T-33 "Silver-Star" jet trainer to eight members of a group of Rover Scouts touring Canadian Forces Base Gimli, Monday.

The Scouts, from the left, Tony Marr, Vancouver, B.C.; Stanley Young, Bramalea, Ont.; Bert Matson, Riverview, N.B.; Sid Lockhart, New Glasgow, N.S.; Jerry Domerecky, Bramalea, Ont.; Craig Cameron, Winnipeg, Man.; and Peter Mills, Pickering, Ont. are attending the Sixth Canadian National Rover Moot at Birds Hill Provincial Park. They bring to 1394 the number of persons to tour CFB Gimli this summer. The Rover "Moot" is held once very four years. This year 170 scouts from eight provinces are attending Birds Hill Park from 19 to 26 of August.

CF Photo

"Good afternoon, welcome to CFB Gimli," is the phrase that has greeted over 1400 people this summer, as they began a tour of Canadian Forces Base Gimli. The groups of up to 50 people have been many and varied. Such groups as Eskimo students from Baffin Island, Resolute and Frobisher Bay have enjoyed visiting such points of interest as the Flight Procedures Trainer, firehall, tower, meteorology office, No. 5 hangar and a static display in No. 3 hangar.

A tour is normally planned two weeks in advance by a phone call or letter to the Base Information Officer, Captain John Dunlop. Arriving at CFB Gimli the visitors are met by the tour co-ordinator who begins the tour in the GTS theatre. After a short briefing on the role of I FTS and the flying program the movie "The Year of 53 Weeks" is shown. The visitors are then divided into groups of ten and are escorted through the remainder of the three hour tour.

As public interest grew, late in May, Lt. Dave Bligh took on the task of tour co-ordinator with the able help of Proficiency flight personnel. Recently, Lt. Glen Buchanan succeeded Dave officially in the new position of Assistant Base Information Officer, providing a firm base for future tour programs.

The tours have provided an opportunity for the personnel involved to meet interesting people ranging in age from eight to eighty. The diversification of people involved in the tours is indicated by the following list:

Students from - Arnes, Arborg, Gimli, Riverton and Selkirk.

Summer Camps - Camp Robertson, VESELKA - Ukrainian Boys Camp, a Composit camp of Cub Scouts, 4-H Club Camp for the Interlake area and approximately 120 crippled children from the Lakeside Fresh Air Camp.



TOURS CONT

Senior Citizens - Stonewall and Camp Robertson.

Out of province visitors ---- Eskimo children from Frobisher Bay and Resolute Bay on Baffin Island. Young Voyaguers from Saskatoon. Rovers attending a "Moot" at Bird's Hill park representing all the provinces in Canada.

This year CFB Gimli has opened its gates to more visitors than any previous summer. The response and interest shown by these people indicates that the program has been a most successful one.

Goulding News

ALL GOULDING GRADE XII SUPPLEMENTAL EXAMINATIONS WILL BE WRITTEN AT --- GIMLI COLLEGIATE IN ACCORDANCE WITH THE OFFICIAL TIMETABLE.

GOING TO PRESS
Base Toy Shop Closing

'BEACH ARAMA'

"IT'S COMING"...."BEACH ARAMA 70" Country and Western Show of the Year

SEE... Big Don Hadaller
The Began Family
Loretta Marsh - Girl Fiddle Player

AND... Many other Country and Western Recording Stars
Refreshments to be served. From 11:00 a.m. Sunday until 1:00 a.m. Monday.
SUNDAY-SEPTEMBER 6 at Winnipeg Beach Curling Club.

For **GOOD** Food, and
Good Service
VISIT THE

Lake Inn RESTAURANT

TIRED OF COOKING??

WHY NOT TRY OUR
NEW TAKE-OUT SERVICE

Next to Gimli Tailor, Gimli

Selkirk Funeral Chapel

** serving the Interlake Area
with dedicated service

** 24-hour Ambulance service

Phone 482-6284
Res. 482-5419

209 DUFFERIN AVE.
GARTH CLARY, DIRECTOR SELKIRK, MANITOBA

CO-OP INSURANCE

We deal in **AUTO, HOME
FURNISHING and CASUALTY INSURANCE**

Mrs. Rae Valgardson

GIMLI CREDIT UNION

10 am to 4pm

Phone 642-5028 or
642-5878 after 5 pm

DOG FOOD DR. BALLARD 2 TINS 99¢
NET

CORN NIBLETS 12 OZ 4 TINS 89¢
G.O. PEAS 14 OZ

TUNA FISH 2 TINS 69¢
BYE THE SEA

CRYSTALS 3 TINS 89¢
RICE

WAFFERS CHRISTIE'S 2 PKGS 89¢
GRAHAM

SPORK BURNS' 2 TINS 99¢
12 FL. OZ.

REFILLS ZEE 2 FOR 59¢
WAX 100'

Cook Out
Go Together

LEGS & THIGNS CHICKEN
L 59¢
B

READY-TO-EAT HAMS
WHOLE OR HALF .75
SHANK END .65
BUTT END .69
CENTRE SLICE .89

MINCED BEEF 65¢/lb
PICNIC HAM 53¢/lb
BURNS SALAMI 69¢/lb
CHUCK STEAKS 69¢/lb
BLADE ROASTS 75¢/lb
ROASTS CROSS RIBS 85¢/lb
BURNS CORNED HEATS 4/1.00

MEADOW GOLD ICE CREAM 3 PTL. 69¢
CHRISTIE'S GRAHAM WAFFERS 13 1/2 OZ PKG 7/89

WE RESERVE THE RIGHT TO LIMIT QUANTITIES

MIRACLE WHIP 47¢
KRAFT MIRACLE 16 FL. OZ.

UINEGAR CANADA 12.8 FL. OZ. 89¢

TEA BAGS SALADA 79¢

HAMS BURNS' CANNED 24 FL. OZ. \$1.69

COFFEE
\$1.19

ZEE TOILET TISSUE 4/65

16 OZ JAR CHEESE WHIZ 85¢

ROBIN HOOD FLOUR 25 lb \$1.89

BLUE RIBBON COFFEE 1 lb /99

SCOTT PKG #2 TOWELS 1/52

CREST SUPER TOOTHPASTE 1/19

FROZEN 2x15 OZ STRAWBERRIES 85¢

YORK 8 OZ 2/ MEAT PIES 1/55

BC VEE PEACHS 3.89/2.99

PINK OR WHITE CRAPFRUIT 89¢/1.00

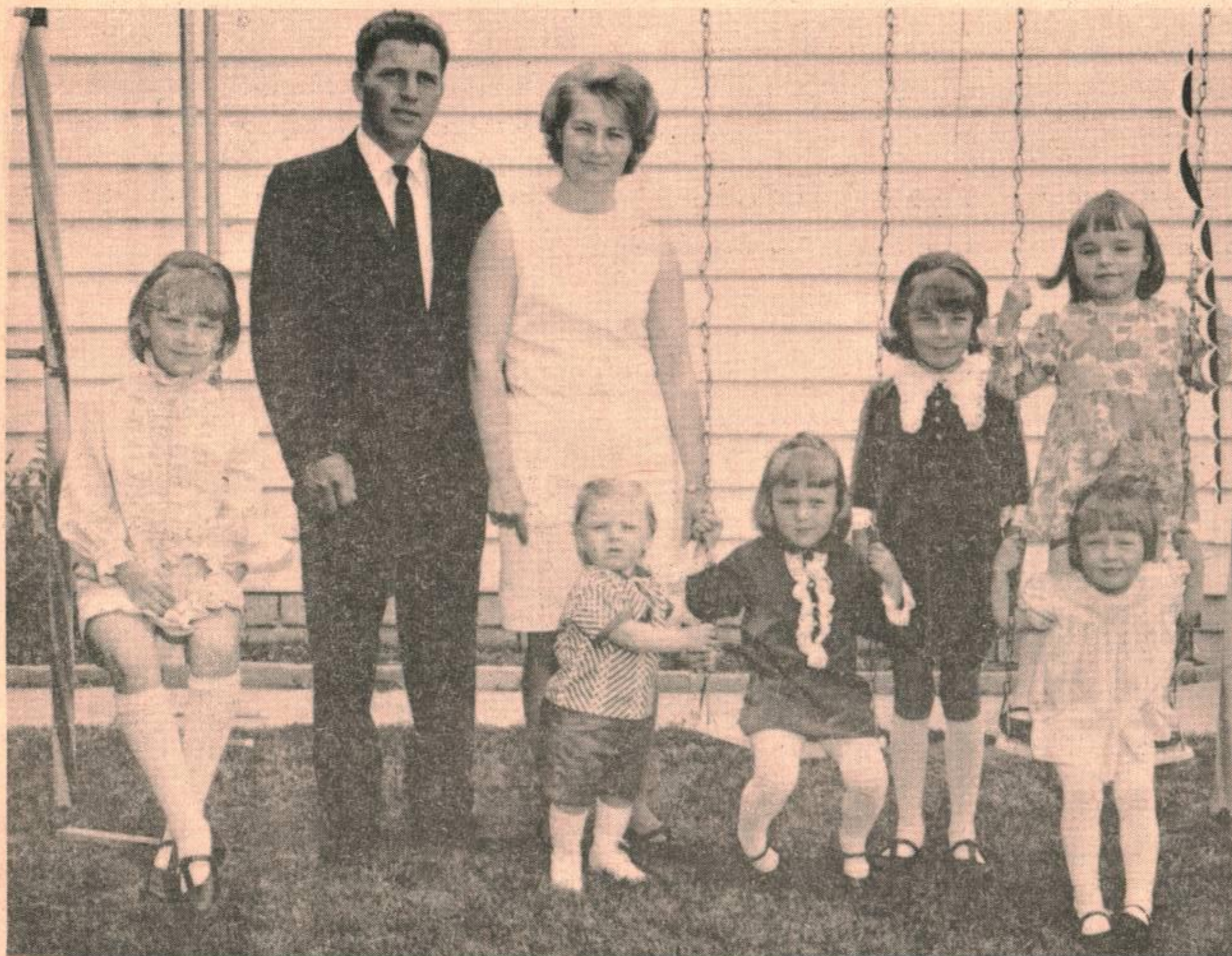
B.C. PEARS 49¢/2.16

SUNKIST ORANGES 85¢/2.00

LETTUCE 2 HEADS 1/45

GORD'S
GIMLI, MANITOBA
OPEN 7 DAYS / WEEK
9 AM - 9 PM
PRICES EFFECTIVE
AUG 27 - SEPT 2 1970.

MEET YOUR NEIGHBOUR



MR & MRS MARVIN ISFJORD & FAMILY

— ARNOLD B. OLSON

Marvin and Jean Isfjord and their family consisting of five daughters and one year old son Raymond are featured this week. Marvin is a heavy equipment operator employed by Gimli Construction. His hobbies include big game hunting and painting in oils. Jean has plenty of helpers in her busy kitchen when daughters Debbie (9), Kimberly (7), Maureen (6), Nancy (4) and Lisa (3) pitch in to prepare the evening meal. Jean admits that a large family is a lot of work but jokingly says she does not miss many bingo nights. The Isfjords and their young family reside at 103-3rd Avenue, Gimli.

Kardy's HARDWARE

Your FIRST STOP STORE for
HOUSEWARE-GIFTWARE-PAINT

642-8838

SELKIRK LUMBER COMPANY LIMITED

Complete Building Supplies - Concrete Block Manufacturing

SELKIRK 482-3141

WINNIPEG BEACH 389-2024

GIMLI 642-8255

GIMLI TAILOR

SUITS
and
UNIFORMS

Made to Measure
four to six weeks



CARRY & SAVE STORE

81 1st Ave.

For house pick-up PHONE PERTH'S 642-5326

THIS WEEK'S SPECIAL AUG 29 - SEPT 4

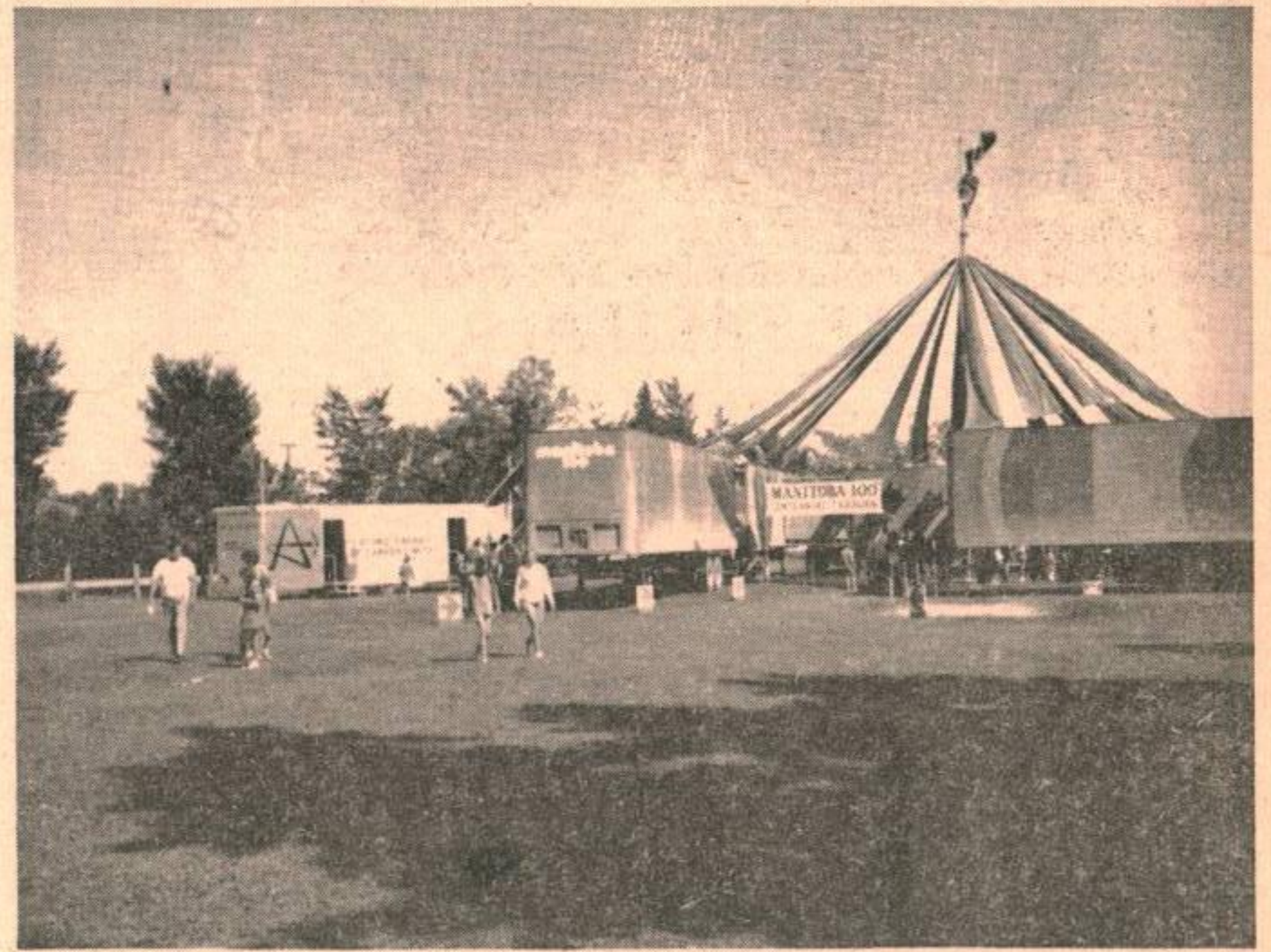
MEN'S or
WOMEN'S SUITS

\$1.49

Gimli 'Fun Fair'



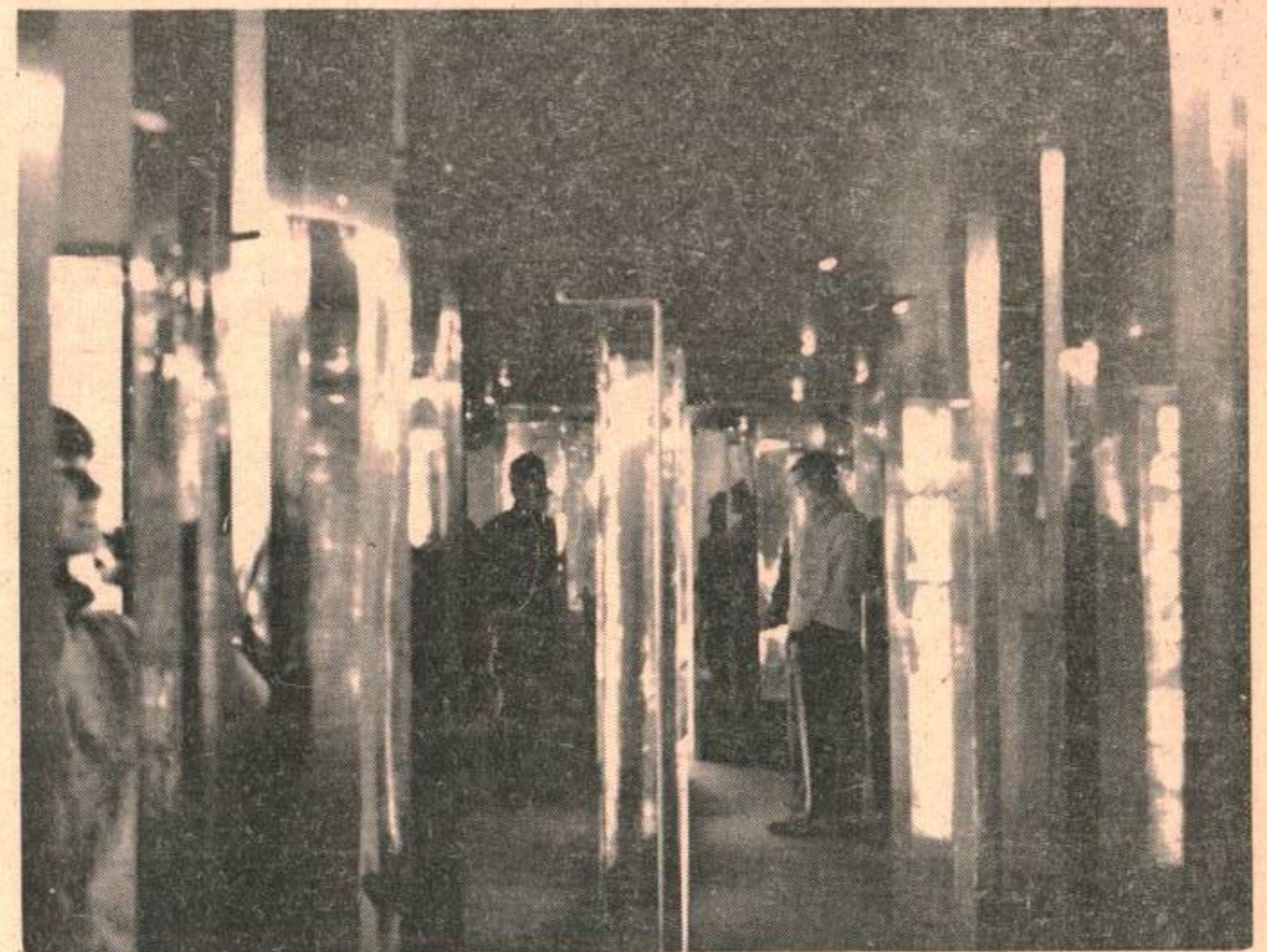
ART DISPLAY



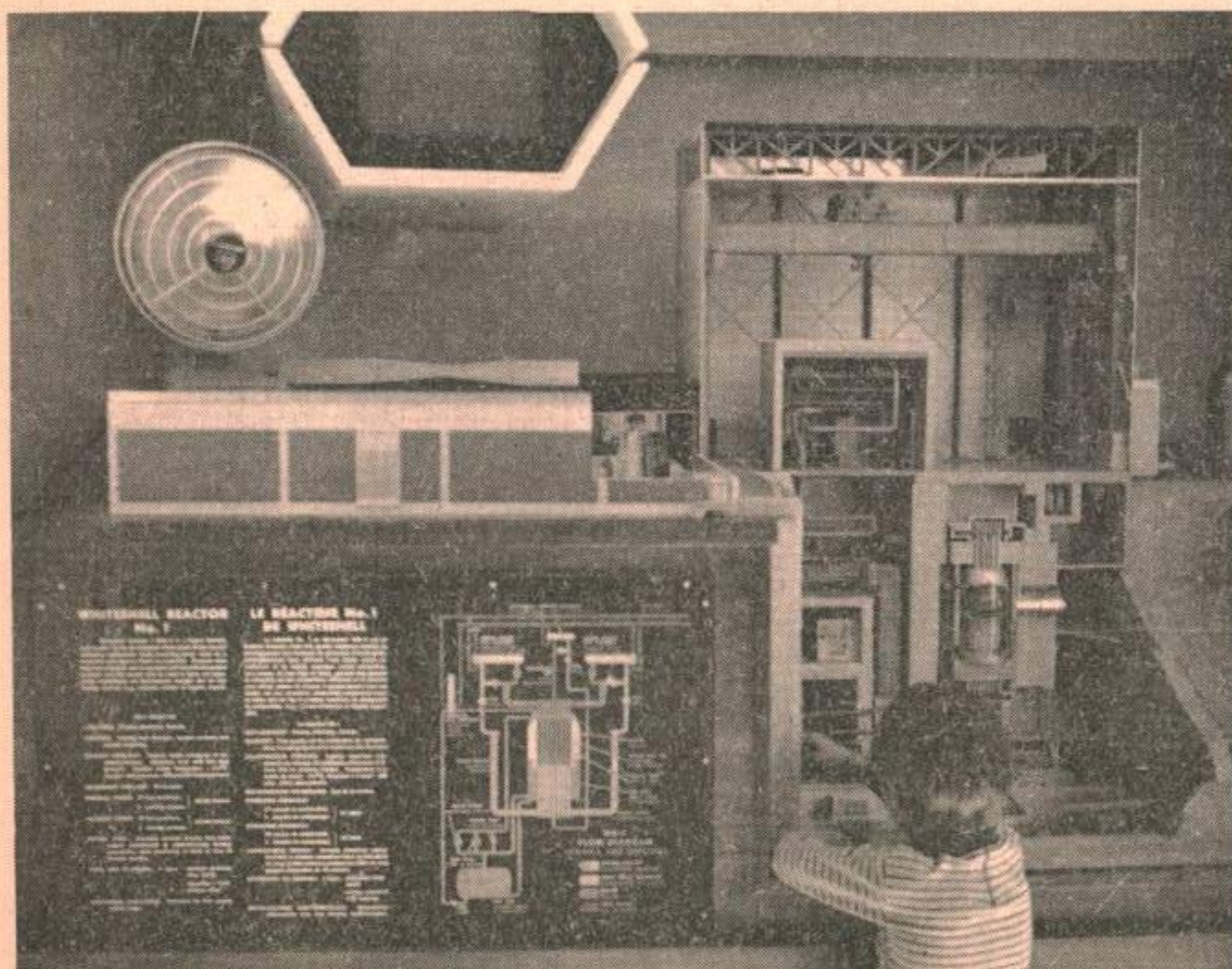
CENTENNIAL CARAVAN



BINGO IN GIMLI PARK



PICTURES OF EARLY MANITOBA



WHITESHELL NUCLEAR REACTOR



SCENIC DISPLAY



**INTERLAKE FASTBALL
TITLE TO FALCONS**

Last Monday evening the CFB Gimli Falcons travelled to Lockport and came out on the winning end with a 14-5 triumph over the Jets; a victory which clinched the Interlake fastball title for the airmen.

Paul Chellew had complete control of the game as he gave up four hits, whiffed eight, and allowed only one walk. Chellew proved to be a threat at the plate as well as Paul collected one of three Falcon home runs.

Playing coach Ken Tappay and first-baseman Ron Beattie pounded out seven of the Falcons fifteen hits to assist Chellew in registering his ninth league victory. The bats of Rick Buchanan and Doug Tucker also rang out as both airmen added another home run to their seasons total.

Although a key victory for CFB Gimli, an injury to Doug Gagnon may hinder the Falcons line-up when they depart for the Provincial Intermediate 'A' championships at Portage La Prairie this coming weekend. Doug was unable to utilize his left arm after a play was made to tag out Lockports Matson on a stolen base attempt in the fourth inning. Medical reports claim that Doug's shoulder may be back to normal come the National - Military playdowns in Greenwood the first week of next month. His team mates certainly wish him a quick recovery.

Tuesday evening the Falcons

made certain the league pennant was theirs by once again defeating the Jets of Lockport only this time by a 9-4 margin. Tom Wadey went the distance for the airmen and home crowd fans witnessed the Falcon moundsman chalk up his twelfth Interlake victory. Wadey scattered six hits, fanned eleven, walked three, and gave up four runs - three which were unearned. The Falcons capitalized on eight walks and seven hits to push across their nine runs. Doug Tucker showed good power at the plate as he pounded out a triple and a double; the only Falcon to collect more than one hit.

Tuesday nights victory over the Jets wrapped up the title for the Falcons giving them a 19-3 win-loss record with only one game remaining in league play. The Teachers of Selkirk were thus forced to settle for second place as their 16-6 record failed to match that of the Falcons. By winning the league the airmen will receive seventy-five dollars from the league president at the termination of the schedule. Due to CFB Gimli representing Zone III in the Nationals next month at Greenwood, the team will be unable to compete for the Interlake trophy as the play-offs commence during that period. Another discouraging not to Falcon players and fans is that the Interlake All Star game between the league winning Falcons and the league All Stars will take place at Selkirk this Thursday instead of at the Base. It was hoped that the game would be played on the Base and cap the season with a seven inning thriller. However, the league president thought otherwise.

Congratulations go out to the following Falcon players who were selected on the Interlake All Star team. They were - Tom Wadey - best pitcher, Rick Buchanan - left fielder, Doug Tucker - center fielder.

Other Falcon players who just missed out on the balloting were: Eldon Jardine - catcher-third vote Bill Boran - 2nd Base " "

Ken Tappy - Short Stop " "
Ken Tappy - Coach, runner-up
Stan Robinson - Manager-third vote
Rick Bucanan - MVP, runner-up.

SPORTS NEWS PRESS RELEASE

The Manitoba Provincial Intermediate 'A' Mens Fastball Championship tournament will be hosted in Portage a Prairie Saturday 29 August and Sunday 30 August at the Pan Am Stadium located on Island Park. It will be a Round Robin Tournament of 15 games plus two games for the central Manitoba fastball leagues Centennial Trophy. The awards from the provincial winner will be the Provincial Trophy plus crests from the M.A.S.A. They will also receive gold medals from the Manitoba Centennial Corporation and the second and third place teams will receive silver and broze medals.

The fourth, fifth and sixth place teams will play off in the consolation event for the C.M.F.L. Centennial Trophy.

There will also be an award for the most valuable player.

PARTICIPANTS:

- Westminster Motor Hotel or Tyndale....Winnipeg.
- Molson Canadians....Dauphin.
- Beausejour or Pine Falls....Whitemouth.
- CFB Gimli Falcons....Selkirk.
- Molson Canadians....League Winner....Portage la Prairie
- Portage Seals....Host Team
-Portage la Prairie.

**How to shop from
Simpsons-Sears
Catalogues**

By phone



T
E
L
E
S
H
O
P

T
E
L
E
S
H
O
P

GIMLI

SIMPSON-SEARS CATALOGUE

ORDER OFFICE

642-5161

CENTRAL BAKERY

BAKED FRESH DAILY

Sliced Bread

Seed Bread
IRISH & RYE

Pan Bread

**Homemade Breads, Buns, & Cakes
Imported Chocolates & Cheeses**

HOT PIZZA TO GO - Baked to your order in 15 min.

Horsing Around

CENTENNIAL HORSE SHOW AND GYMKHANA
15 August 1970, Winnipeg Beach, Man.

4 H SHOWMANSHIP - Trophy donated by Royal Canadian Legion Branch 182, Gimli, Manitoba.

- 1st - Norma Comack, Winnipeg Beach.
- 2nd - Sheila Rice, Gimli.
- 3rd - Lane MacPherson, Winnipeg Beach.
- 4th - Terry McNamee, Gimli.

MACPHERSON'S STABLES CHALLENGE

TROPHY - Junior Equitation - Ken Stovel, Winnipeg.

JUNIOR SADDLE HACK - Trophy donated by Mayor D. Sigmanson of Gimli.

- 1st - Cindy, ridden by Monica Paskewitz, Winnipeg.
- 2nd - Flag, ridden by Sharon Haliday, Winnipeg.
- 3rd - Suzie, ridden by Lane MacPherson, Winnipeg Beach.
- 4th - Stubby, ridden by Lorraine Rost, Winnipeg.

JUNIOR WESTERN PLEASURE - Trophy donated by Taylor Pharmacy, Gimli.

- 1st - Sundance Lady, ridden by Sandra Foster, Clandeboye.
- 2nd - Western Dancer, ridden by Diane Walker, Petersfield.
- 3rd - Surprise Sabre, ridden by Debra Foster, Clandeboye.
- 4th - American Beauty, ridden by Pat Walker, Petersfield.

OPEN COSTUME CLASS - Trophy donated by Mrs. Doris Bender, Teulon.

- 1st - Myrna Wiebe, Winnipeg.
- 2nd - Mickey MacPherson, Winnipeg Beach.
- 3rd - Tom Morris, Winnipeg.
- 4th - Lorraine Rost, Winnipeg.

JUNIOR MUSICAL TIRES - Trophy donated by George's General Store, Winnipeg Beach.

- 1st - Sundance Lady, ridden by Sandra Foster, Clandeboye.
- 2nd - Stoney, ridden by Myrna Wieber, Winnipeg.
- 3rd - Western Dancer, ridden by Diane Walker, Petersfield.
- 4th - Prince, ridden by Darryl Sturtevant, Stonewall.

SENIOR WESTERN PLEASURE - Trophy donated by Gimli Transfer, Gimli.

- 1st - Lobus Star Lee, ridden by Joanne Otto, Winnipeg.
- 2nd - Cindy, ridden by D. MacPherson, Winnipeg Beach.
- 3rd - Sheikh's Lucy Rey, ridden by Harold Gross, Winnipeg.
- 4th - Whiskey, ridden by Pamela Donaghy, Teulon.

JUNIOR SACK RACE

- 1st - Sundance Lady, ridden by Sandra Foster, Clandeboye.
- 2nd - American Beauty, ridden by Part Walker, Petersfield.
- 3rd - Suzie, ridden by Lane MacPherson, Winnipeg Beach.
- 4th - Velvet, ridden by Laverne Sturtevant, Stonewall.

SENIOR BARREL RACE - Trophy donated by Harold Dalman, Gimli.

- 1st - Dunny Chuck, ridden by Sue James, Headingly.
- 2nd - Smokey, ridden by Garry Sears, Camp Morton.
- 3rd - Thirsty Bert, ridden by Audrey Patton, Petersfield.
- 4th - Lady, ridden by Des Hygaard, Clandeboye.

JUNIOR BARREL RACE - Trophy donated by Tip Top Meants, Gimli.

- 1st - Teddy, ridden by Bobby Hygaard, Clandeboye.
- 2nd - Sundance Lady, ridden by Sandra Foster, Clandeboye.

- 3rd - Lady, ridden by Danny Hygaard, Clandeboye.
- 4th - Surprise Sabre, ridden by Debra Foster, Clandeboye.

SENIOR SADDLE HACK - Trophy donated by Lone Oak Motel, Winnipeg Beach.

- 1st - Cindy, ridden by D. MacPherson, Winnipeg Beach.
- 2nd - Just Whisper, ridden by Tom Morris, Winnipeg.
- 3rd - John Henry, ridden by Mike Degelder, Winnipeg.
- 4th - Bohni Lour Ali, ridden by Margaret Dartnell, Winnipeg.

JUNIOR POLE BENDING - Trophy by H.P. Tergesen, Gimli.

- 1st - Lady, ridden by Danny Hygaard, Clandeboye.
- 2nd - Teddy, ridden by Roddy Hygaard, Clandeboye.
- 3rd - Sundance Lady, ridden by Sandra Foster, Clandeboye.
- 4th - Prince, ridden by Darryl Sturtevant, Stonewall.

SENIOR POLE BENDING - Trophy by MacGregor's Drug Store, Winnipeg Beach.

- 1st - Lady, ridden by Des Hygaard, Clandeboye.
- 2nd - Dunny Chuck, ridden by Sue James, Headingly.
- 3rd - Just Whisper, ridden by Tom Morris, Winnipeg.
- 4th - Thirsty Bert, ridden by Audrey Patton, Petersfield.

OPEN POTATO RACE

- 1st - Dunny Chuck, ridden by Sue James, Headingly.
- 2nd - Stormy, ridden by Carol Clifton, Petersfield.
- 3rd - King, ridden by Lynn Sutherland, Clandeboye.
- 4th - Velvet, ridden by Laverne Sturtevant, Stonewall.

HANDY HUNTER - Trophy by Falcon Lounge, Gimli.

- 1st - Cindy, ridden by D. MacPherson, Winnipeg Beach.
- 2nd - Flag, ridden by Lane MacPherson, Winnipeg Beach.
- 3rd - John Henry, ridden by Mike Degelder, Winnipeg.
- 4th - Just Whisper, ridden by Tom Morris, Winnipeg.

SENIOR KEYHOLE - Trophy by Matlock Garage, Matlock.

- 1st - Lady, ridden by Des Hygaard, Clandeboye.
- 2nd - Teddy, ridden by Marge Greenberg, Gimli.
- 3rd - Just Whisper, ridden by Tom Morris, Winnipeg.
- 4th - Dunny Chuck, ridden by Sue James, Headingly.

OPEN TRAIL HORSE - Trophy by Chudd's Garage, Gimli.

- 1st - Rascal, ridden by Pat Walker, Petersfield.
- 2nd - Hajji Baba, ridden by Sue James, Headingly.
- 3rd - Sundance Lady, ridden by Sandra Foster, Clandeboye.
- 4th - Tonca, ridden by Jackie Trippier, Petersfield.

*the
store
for people
in love.*



Bring in this ad when you are purchasing a star brite diamond and we will give you a \$10 gas allowance. We're nothing without your love.

Ben Moss Jewellers

Westwood Shopping Centre

Mall Centre 477 Portage

NEW — Portage & Donald

IN WINNIPEG



NO
HIDDEN
CHARGES

NO
PENALTIES



- ATTRACTIVE SAVINGS PLANS
(Doubled in event of Death)
- TERM DEPOSIT CERTIFICATES
(no penalty for premature withdrawal)
- FREE CHEQUING FACILITIES
- CHARTER FLIGHTS
- LOW COST LOANS
- INTERNATIONAL CREDIT CARDS
(including Travellers Cheques)
- RETURN OF PROFIT TO MEMBERS

ASTRA CREDIT UNION



THE 10th HOLE

Aspen Park Golf Club



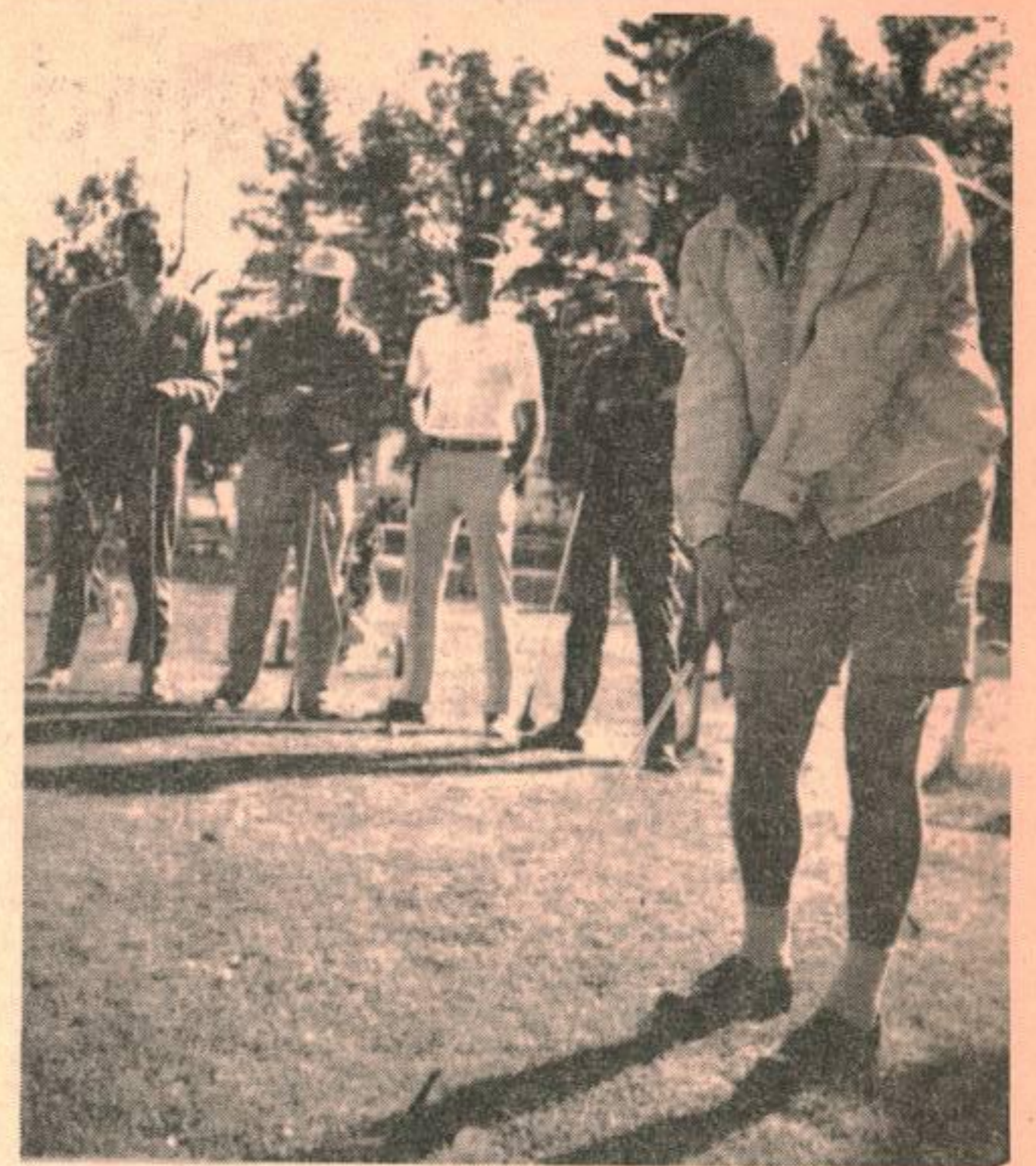
WINNING STYLE:.....Capt. Hugh MacKay shows the winning touch as he helps his Winnipeg team to victory in the Canadian Forces Prairie Open held at CFB Gimli this weekend. Capt. MacKay had the tournament's individual low gross of 188 after 45 holes of golf. Seven, eight-man teams from Canadian Forces Bases at Winnipeg, Shilo, Gimli, Gypsumville, Cold Lake, Rivers and Moose Jaw competed for the trophy which is awarded annually. CFB Shilo squeezed out Gimli by one point to take second place. The tournament was played at the Aspen Park, Northern-
aire and Sandy Hook Golf Clubs.

INDIVIDUAL	
1. MacKay	- 188, Winnipeg
2. Reitzel	- 189, Cold Lake
3. Blinston	- 189, Shilo
4. Chorney	- 191, Gimli
5. Herrick	- 191, Gimli
6. LaFortune	- 193, Gimli
7. Piercy	- 194, Winnipeg
8. Notley	- 195, Winnipeg
9. Hillier	- 195, Cold Lake
10. Bowden	- 196, Shilo

BASE TEAMS	
1. Winnipeg	4. Cold Lake
2. Shilo	5. Moose Jaw
3. Gimli	6. Rivers

MEMBERS NOTE

The draw for the club championship is posted in the Pro Shop. All games are to be completed by the day specified.



General Carr makes contact to officially open the 1970 Prairie Open. Watching the style, in the background, are left to right: Lt. Jim Greenough, President, A.P.G.C., Col. "Lorne" Gazley, Regional Surgeon, Lt.Col. "John" Ayres, acting Base Commander Gimli and Col. "Sandy" Sanford, Namao Base Commander.



Rod Oberg is caught napping after a long day of golf. Don Caldwell, organizer of the 'tourney', begins to realize there is more to this than meets the eye. (I didn't know that!!!)



Capt Collins of Cold Lake presents the Banana Belt Trophy to Fred Chorney of Gimli. The Banana Belt has been a private feud between Gimli and Cold Lake for the past 10 years. In the background Jim Greenough looks on with that 'you can't win 'em all, Bernie' look. FramFoto

FINLEY TV

— Service —

26 6th Ave, Gimli 642-5386

*DIANE'S BEAUTY SALON at 41
Second Ave. is open for your convenience Tuesday through Saturday.*

*I AM ALSO OPEN AFTER
SUPPER ON TUES. AND WED. NIGHT!!*

TINTS, PERMS AND WIG STYLING
ARE OUR SPECIALTY.

*For appointment call
642-8850*

DIANE'S BEAUTY SALON

GIMLI MOVING & STORAGE

- FAST FREIGHT AND EXPRESS TO WINNIPEG BEACH, GIMLI •
- ** PACKING ** FURNITURE ** SHIPPING ** •
- GOODS INSURED * ANYWHERE IN CANADA * RELIABLE SERVICE •
- Gimli Phone 642-5269 Winnipeg Phone 774-2259 •

Do you know baseball

- by LJ Burns

Top half of the eighth inning, the home team is leading 3-2. The batter walks and goes to second on a pass ball and advances to third on a ground out. The teams manager decides to try a squeeze play, the runner breaks for the plate on the pitcher's motion. The first baseman, sharply alert, also races toward the plate. The pitcher meantime delivers a slow ball which fairly floats toward the plate. The first baseman, seeing the ball will not reach the catcher in time for the putout, charges into the pitching lane, grabs the pitched ball, and tags the runner before he slides into the plate.

Quest: If you were the umpire how would you rule?

Ans: The runner is allowed to score and the batter is awarded first base.

Last of the ninth inning, the visitors lead 4-2. Two singles and a walk load the bases, the next two batters strike out. The next batter hits a drive to left centre, the runners from second and third score easily, the runner from first scored but he failed to touch second and third bases in doing so. The third

baseman calls for the ball and appeals to the umpire, who declares the runner out for the third out. The second baseman now calls for the ball, steps on the bag and appeals to the umpire. The second base umpire rules the runner out.

Quest: How many runs score?

Ans: The out at second base becomes the legal third out, and the visitors win 4-2. Had the apparent fourth out not been appealed the score would have been 4-4 and the game would continue.

BOWLING NEWS

ATTENTION LADIES

A meeting of the Ladies Bowling League will be held on September 1, 1970 at 8:00 p.m. in the Viking Room. We need your opinion in making decisions for the next season so plan to be there. SEE YOU ALL ON SEPT. FIRST. Your Executive.

BOWLING NOTICE

Casual Bowling - starts on the 31 of August 1970 - 1800 - 2300 hrs. daily. Entry forms for League Bowling..... mixed, mens and ladies. Available at Bowling Alleys during casual bowling or contact Cpl H.A. Pike, Local...28.

SWIM BADGE REGISTRATION

Personnel are reminded that swim badges purchases for the 1969/70 season became obsolete 1 September 1970.

The new badges which have been in force since 1 July 1970 can be purchased at the Base Rec Centre Orderly Room at the following times.
Monday - Thursday 0900 - 1100 hrs
and 1300 - 1600 hrs
Friday from 0900 - 1100 hrs

Those persons not wearing a new swim badge (black on white) as of the 1 of September will be refused entry to the pool until a new registration has been obtained.

Swim registrations will now run from 1 July to 30 of June of each year.

INTER MESS SOFTBALL

The Intermess Softball League has just completed a six game schedule, with results as follows:

1. Senior NCO's.....5-1
2. Jr. Ranks 'B'.....3-3
3. Officers' Mess.....2-4
4. Jr. Ranks 'A'.....1-5

Play off began Tuesday, August 25 with first place playing third and second playing fourth in a best two-out-of-three semi-final.

The winners will play best two-out-of-three for the championship.



TOM-BOY

Hey Kids Hurry!

Pick up Your **FREE** SCHOOL BOOK COVER WHILE STOCKS LAST

TOM-BOY EXCELS IN PRODUCE!

CALIF. CANADA NO. 1 THOMPSON SEEDLESS AND RED MALAGA

GRAPES LB. **39¢**

B.C. CANADA NO. 1 RED HAVEN **2 LBS. 49¢**

FROZEN FOOD

FISH AND CHIPS FRASERVALE COD 24oz. PKG. **69¢**

TOM-BOY growing with Manitoba, to beat '70!

"FREE"

HOT DOG + ZING DRINK

FRIDAY + SATURDAY

CHILDREN MUST BE ACCOMPANIED BY AN ADULT

FEATURING BURNS WINNERS

Back to School FOOD VALUES!

MAXIM 4oz. JAR \$ **1.19**

FREEZE DRIED INSTANT ZING - BOTTLED 5 26 FL. OZ. BTL'S. \$ **1.19**

ORANGE or COLA POST 15oz. PKG. **55¢**

ALPHA BITS

COFFEE DRINKS CEREAL

TURKEYS CANADA YNG. GR. "A" EVISC. 5-9 LB. AV. "IDEAL FOR YOUR ROTTISSERE" LB. **39¢**

BEEF FRONTS RED OR BLUE GRAND BEEF CUT AND WRAPPED "FREE" TO SUIT YOUR NEEDS 130 LBS. to 150 LBS. LB. **45¢**

PRICES EFFECTIVE - AUG. 28, 29 & 31, 1970. WE RESERVE THE RIGHT TO LIMIT QUANTITIES.

Gimli Tom-Boy

Gimli, Manitoba



TOM-BOY

Westfair Associate



The Spirit of '70

1870 MANITOBA CENTENNIAL 1970

**GIMLI WOLVES HOWL
WITH HOARSE VOICE**

Saturday evening saw the Gimli Wolves tackle the Canadian Professional Hockey School Instructors posting a 9-3 win. Local boy Warren Magnussen led the instructors with two goals and two assists with big John Bekeris following close behind with two goals and one assist. Bob Pusey, Wayne Fleming, Arnie Bilerke, Ralph Waples and Dave Goring each contributed singles.

Victor Thordorson, Ross Balley and Mark Corlow counted for Gimli.

Although the Wolves were more like Cubs on Saturday, Sunday witnessed a complete turn-about as they defeated the Hockey School Instructors by the score of 10-5.

This coming Saturday and Sunday, the Wolves expect to host the River-ton Lions for games at 8:15 p.m. each evening.

As well, this Saturday will see tournament games at 9:00 a.m. and 5:30 p.m. The first being between the Hockey School students and the second between the All-Stars of the past two weeks.

**FIVE BOYS WIN FREE WEEK
OF HOCKEY SCHOOL**

Winners to date in the Canadian Professional Hockey Schools' draw are:

- Michael Martin, 23-3rd Ave. Gimli
- Martin Legair, 42-4th Ave. Gimli
- Scott Windsor, 66 Beaumont Bay,
Fort Garry 19, Man.
- Darrell Ostifichuk, 319 Arnold St.,
Winnipeg 13, Man.
- Farrell Nabess, 289 Austin St.,
Winnipeg 4, Man.

The Gimli boys will be attending a free week of hockey school in Gimli, while the boys from the city may attend a free week at either the Dutton Arena in September, or the Century Arena in October. Three more winners will be drawn later. Boys may enter the draw at the school's sport centre, 1195 Pembina Highway, Fort Garry 19, Manitoba.

The Gimli Recreation Department announces that special arrangements have been made to have the Canadian Professional Hockey School operate one more week in the Gimli Arena - August 31 to September 5. Classes will be conducted on a six day basis with two hours of hockey instruction per day for a fee of \$25.00. Out-of-towners may take advantage of these special rates and receive board and room for an additional \$25.00. Apply to the Gimli Arena, Gimli -- Phone 642-5434 or the Canadian Professional Hockey Schools, 1195 Pembina Highway, Winnipeg -- Phone 284-6431.

Fall Water Safety Program

Fall Water Safety program for DND dependent children and adults will be in effect once again this year. Classes will be held at the Base Pool. Please note the following, and return completed form to the Rec Centre Orderly Room by 11 September 1970.

1. Indicate preferred program below.
 2. Age must be six years as of 1 January 1970 or older.
 3. Swimmers must have swim badges issued by Rec. Centre.
 4. Bathing caps imperative for all long-haired children.
 5. Show present level below as "No water experience", "Beginner not passed", "Beginner Qualified", "Junior Qualified" or "Intermediate" etc.
 6. These levels will be offered to both children and adults: Beginner, Junior, Intermediate, Senior, Synchronized Swimming, Elementary - RLSS, Intermediate - RLSS, Bronze Medallion, Bronze Cross.
- The Synchronized swimming course is a new course being offered this year. The requirements for this level will be a good knowledge of swimming and the ability to float well.

Name (s)	Date	Present Level	Registering which level

Permission is granted the above dependents to participate in the Fall Water Safety Program. The staff does not assume liability for injuries incurred during lesson periods or loss of personal articles from the locker rooms.

Name.....Phone.....

Address.....Signature.....

Registrations to be forwarded to Cpl J Williamson - Recreation Centre Loc 52

NOTE: REGISTRATIONS BY PHONE WILL NOT BE ACCEPTED

WEEKEND HOCKEY CAMP

Brandon Wheat Kings will hold a try out camp at GIMLI Arena Saturday and Sunday, September 12 and 13 1970.

- Requirements:
- a. Own hockey equipment.
 - b. Sticks may be purchased at arena.
 - c. Must be under 19 and qualify for junior hockey.
 - d. Practice time: Saturday...2:00 p.m. to 5:00 p.m.
Sunday.....2:00 p.m. to 5:00 p.m.

Guaranteed six hours ice time. Brandon coach will handle the workouts.

ENTRY FORM

NAME: _____

ADDRESS: _____

AGE: _____

TELEPHONE: _____

Send entry form in with \$5.00 money order or cheque to - Box 44, Gimli, Manitoba or telephone 642-5434 before September 10, 1970.

THE CHAPLAINCY



PADRE DON HILTON

Padre Hilton is a true Manitobaian. He was born at The Pas, Manitoba. Went to school at The Pas and Winnipeg. He lived in Dauphin many years when his father was the local Sheriff.

He studied at the University of Manitoba and Winnipeg, and did post graduate work at Edinborough, England.

He was ordained a United Church Minister at Brandon, Manitoba, exercised his ministry at Kakabeka Falls, Ontario, and Gull Lake, Saskatchewan before joining the RCAF on 1 July 1963.

He spent five years in Cold Lake, Alberta and came to the Gimli Base in the summer of 1968.

He is a great asset to the Base and a charter member of the Gimli Ecumenical Council.

His wife Shirley (nee Latimer) was born at Oxdrift, Ontario. They have two children, Cathy 12 years old and John 11 years old.



FATHER GEORGES SAVOIE

Father Savoie was born in Louiseville, Quebec. Studied in Montreal and St. Boniface. After taking his B.A., he took a Licence in Philosophy, special studies in Sciences, psychology, psychonomy and a Bachelor in Theology. He was a teacher while studying at University.

Ordained in Montreal he came to Manitoba, his second home, where he worked as a Parish Priest in LaBroquerie, Norwood and Saint Norbert.

He joined the RCAF in 1955 while studying theology and served at London, Ontario; Cold Lake, Camp Borden, Saint Jean, Gimli, Winnipeg, Summerside, Trenton and for a second time at Gimli.

He also is a charter member of the Gimli Ecumenical Council and a member of the Sundayscope production team. He is most interested in pastoral psychology and marriage counselling. If you need help -- who really does not once in a while -- drop in to see him.

They.....say his sermons are not too long!!



PROTESTANT CHURCH

It was dedicated on 18 April 1955. It can seat well over 200 persons, and is the largest Chapel on the Base. It has been used for ecumenical funeral services over the past two years.

Services are at 1000 hours every Sunday morning.

Why wait until you are carried into it? It is a nice place of public worship. The Chaplain prepares his sermons well. Lots of sweat goes into them! Drop in any time.

FramFoto



CATHOLIC CHURCH

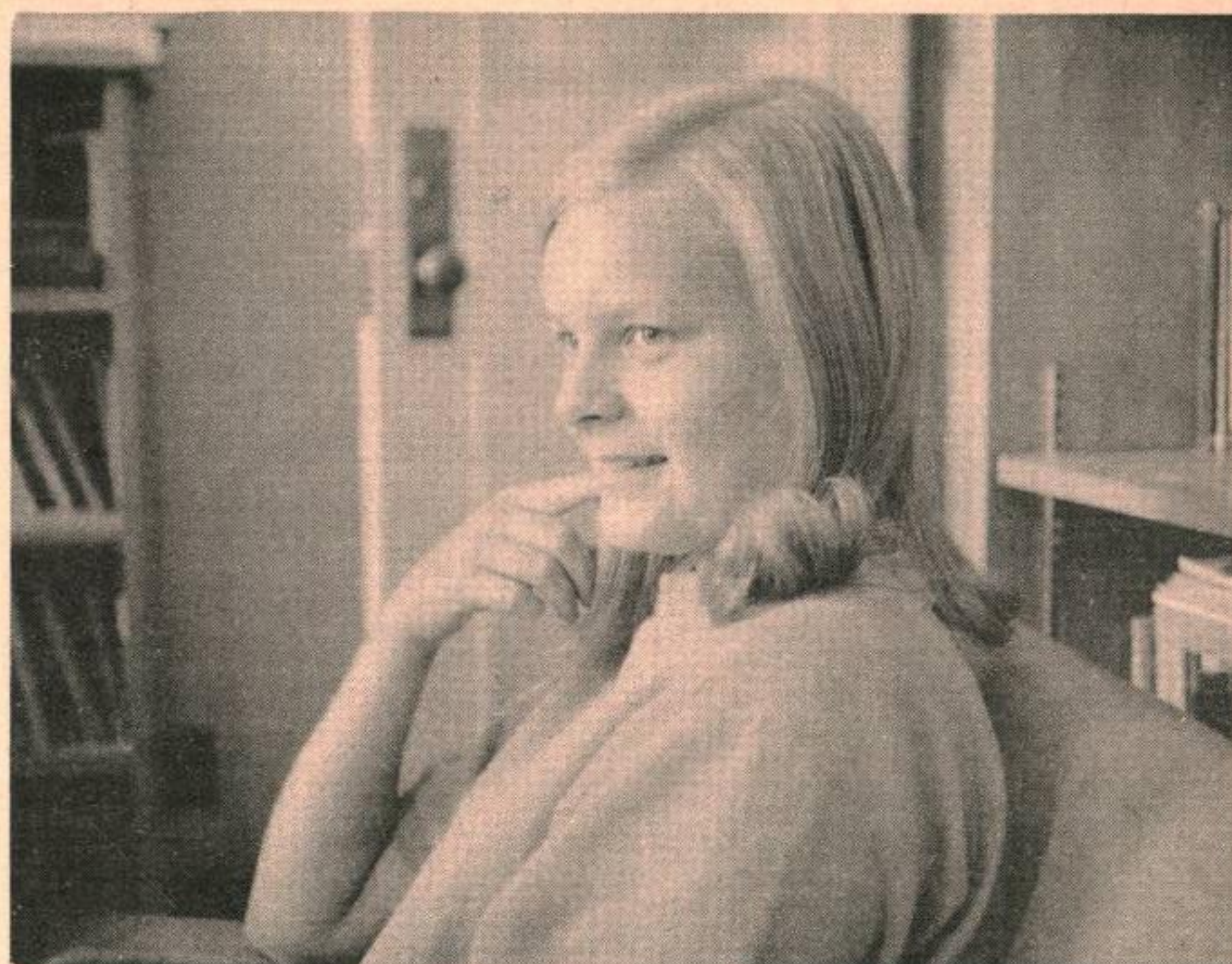
The Catholic Chapel is located right in the center of the Base, near the OFT Bldg. It is the Senior Chapel, built during the war and served for both faiths for a while.

The building is not new, but well kept. It can seat up to 180 persons. Masses are said daily - on weekdays at 1700 hours and on Sundays at 0900 and 1115 hours.

It is at the vanguard of the liturgical and ecumenical movements. Lively songs and music are piped in before and after each Mass on Sundays.

**TED EVENS**

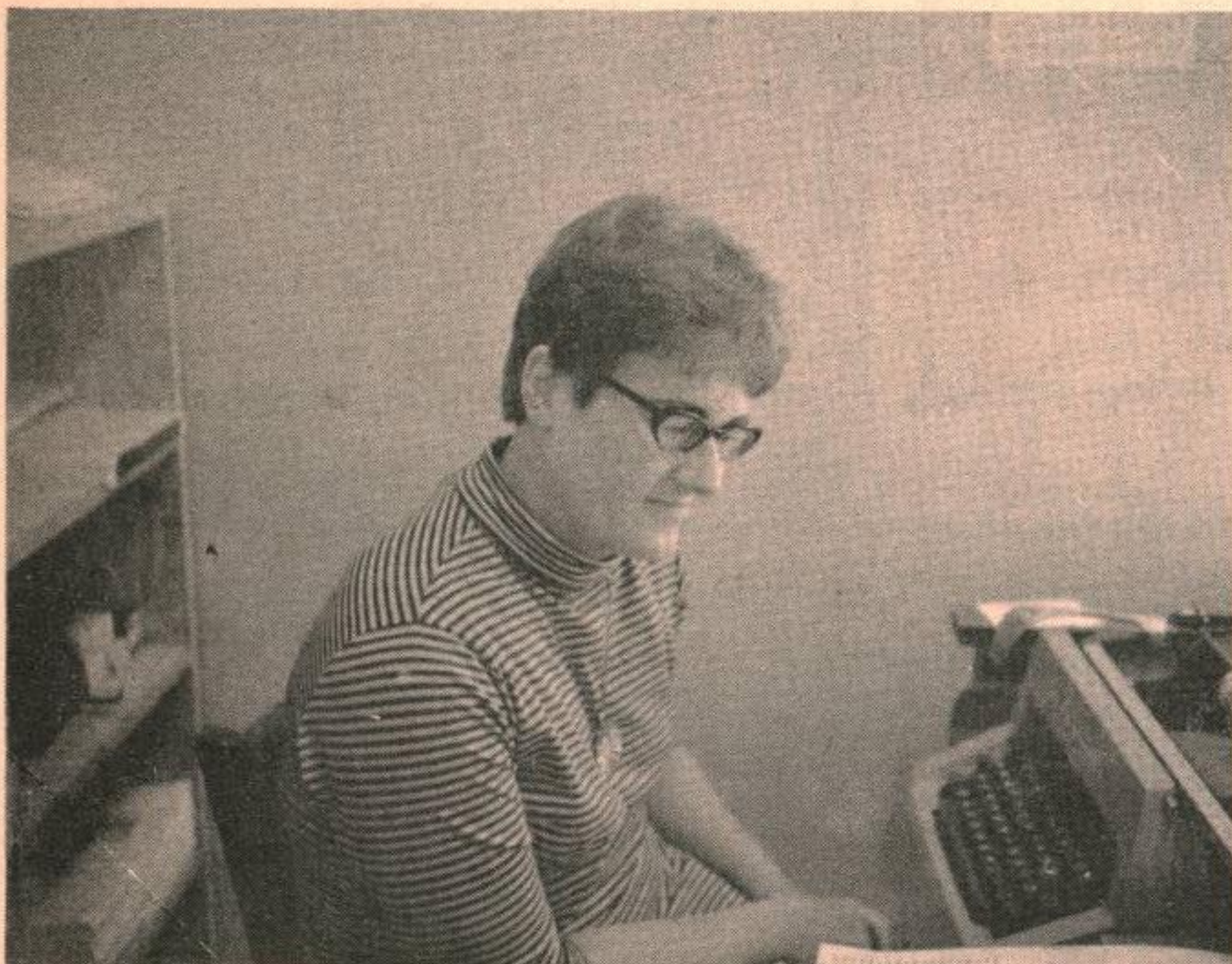
Ted is well known for his sense of humor. In his trade "Cleaner" you need it! You are not finished cleaning the Chapel, than some dirty soul leaves prints all over. He just smiles and offers you a shoe-shine! Born in Liverpool, England, Ted came to Canada in 1917 to settle in Winnipeg. After working many years in the garment industry, he moved to Gimli, home of his wife Vigdiss. During the summer Ted was supervising female students working with him. One can see from the picture how seriously he has taken his role The girls love him! Cleans their souls!

**VALERIE PARKER**

Valerie is one of Ted's helper, for the summer! She works as a cleaner at Headquarters, the Post Office and the Protestant Chapel.

Born in Teulon, Manitoba, she now lives at Gunton, Manitoba. She completed Grade 12 at Teulon Collegiate and plans to enter the Faculty of Education at the University of Manitoba in September.

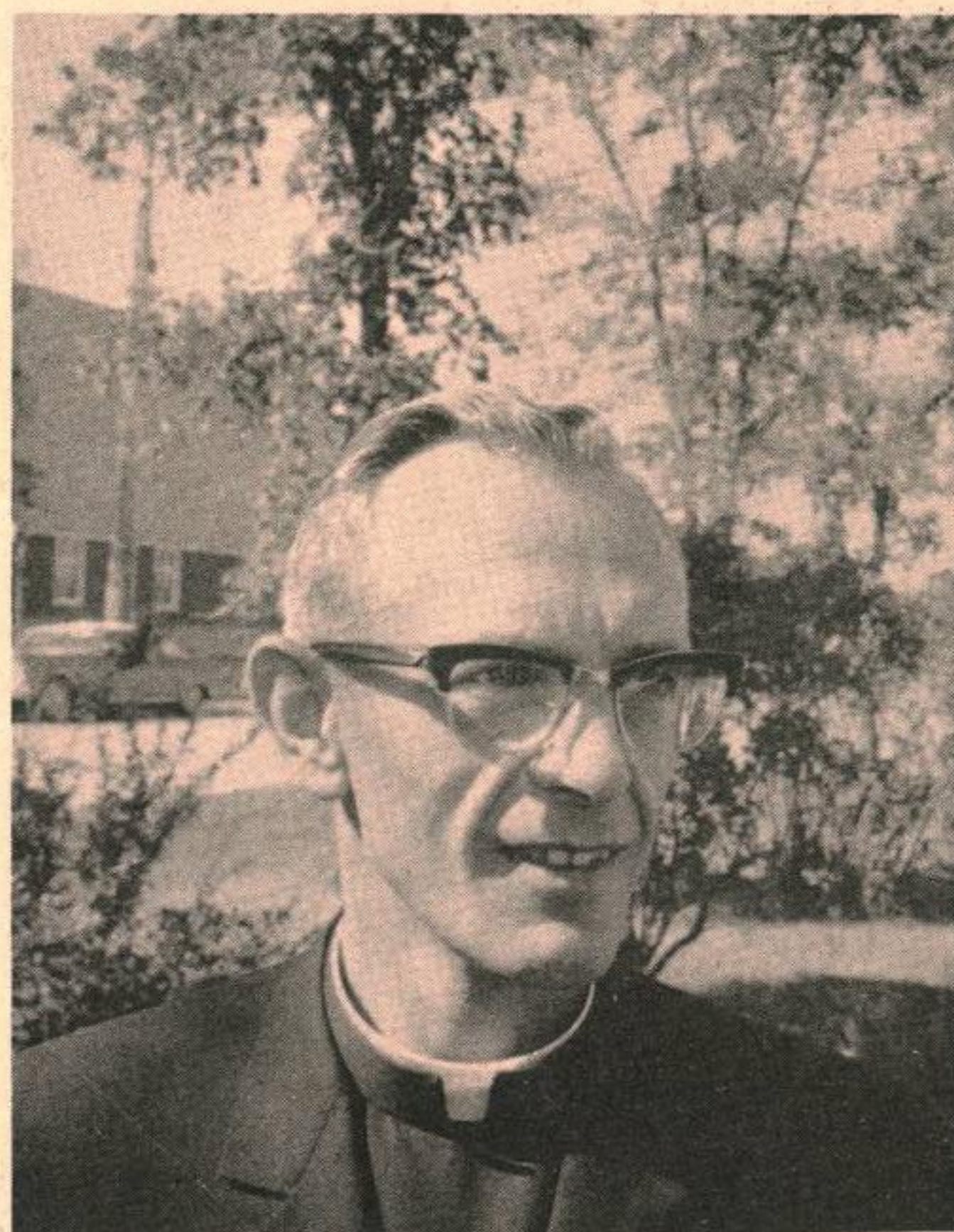
Valerie has found the experience of working on the Base a most enjoyable one.

**FAYE ANTON (NEE REYKDAL)**

Faye was born at Winnipeg Beach, married in 1967 and has been working on the Base since 1963, as secretary in GTS and then for the Chaplains.

She is of Icelandic descent. Her grandfather came from Iceland, her grandmother was born in Manitoba. Here! Here!

"If you can see it or figure it out, type it!" That is her motto. She is a busy girl since the Chaplains have no orderly room and she is in charge of records, typing, filing, telephone answering etc. In the mornings she works in the R.C. Chapel and in the afternoons in the Protestant Chapel.

**FATHER TED HOEKS**

Father Hoeks has been the pastor of St. Michael's Church in Gimli for almost three years. He was born near Eindhoven, Holland in 1925, came to Canada in 1952, ordained a priest 1958. He has been a parish priest in St. Mary's Cathedral, Winnipeg, in Fort Garry and Brandon prior to coming to Gimli.

He is civilian officiating clergyman at the Base together with Rev. Jack Cameron of St. Augustine Parish, Gimli. Sorry! Rev. Cameron was not available for a portrait but -- you remember he was starring on Channel Seven on the 24 May 1970 when the Gimli Ecumenical Council produced "Community Involved". FramFoto

Chapel News

R.C. Chapel

OUR LADY OF LORETTO CHAPEL
CFB GIMLI, ASPEN PARK, MAN

Major (Rev.) J. Georges Savoie
B.A.; LPh.; BTh.
Phone: 156

MASSES

Sunday - 9:00 a.m. and
11:15 a.m.
Weekdays - 5:00 p.m.

CONFESSIONS

Saturday - 4:00 p.m. - 5:00 p.m.
Before each Mass and whenever
you feel like it. We will try
to accommodate everyone.

BAPTISMS

By Appointment: Usually on
Sunday

MARRIAGES

1. Give two months notice to your Chaplain
2. For a Mixed Marriage - four months notice would be preferable since the Non-Catholic party needs to take a few instructions about the Catholic Faith.

Protestant Chapel

Rev. D.W. Hilton
Phone: 156r2

SUNDAY - 30 August 1970
10:00 a.m. - DIVINE WORSHIP

**LAKEVIEW
Coin Laundry**

& DRY CLEANING
66 First Ave.

PRAYER FOR THE LEAST BRAVE

Lord whose empire is the sky
And all worlds where harsh
blows fall,
See beneath thy pitying eye
One who is not brave at all!
Put Thine arm beneath her own
Dry her tears, for she must weep!
Held her for she walks alone;
Help her the long watch to keep!
Lord, who mark the sparrows death,
Hear her voice if she should call;
Brace her spirit! fill with faith
One who is not brave at all!

THE GENERALIZATION

One of the great temptations that faces most people in general and churchmen in particular, is the temptation to generalize. A statement that is true for one particular situation due to certain circumstances. For example, a serviceman gets drunk, steals a car, drives it through the display window of a local store, resists arrest and screams obscenities all the way to jail. This is a particular situation with part-circumstances. However, how many people, observing this episode from the sidelines, will say; "He's typical of all servicemen". This is an unfair and unjust generalization about members of the Armed Services.

Let's look at a few more examples of generalizations. A long haired youth rapes a girl. Immediately you hear the cry that today's youth are over-sexed and violent. A wealthy businessman is convicted of illegal stock deals; how many people sit back and generalize that all wealthy businessmen are dishonest? A minister is found to be having an affair with the president of the Ladies' Aid. People will say "If that's the Church, I don't want any part of it!"

Generalization can be dangerous. Twenty years ago, Senator Joseph McCarthy assumed that people in the United States, holding liberal views should be investigated for communist sympathies. He made this generalization because a few people who actively supported liberal causes were proven to be communists. The result of this assumption was a witch-hunt so diabolical that the term macarthism became synonymous with bigotry.

Sweeping generalizations have caused a lot of harm, and many innocent people have suffered because of them. All abortions are not wrong; some are necessary. All agnosticism is not wrong; through our questions and doubts we learn and grow. Faith is not the tool of hypocritical; it can be the means through which we learn reverence for God and for human life. Every event and every situation that we face in life must be judged on its own merit and not by some hypothetical generalization that does not take into account all the factors.

CHUDD & SONS

Gimli's CHRYSLER Dealer

SHELL oil products
- 642-5329

DANCES, BANQUETS, PARTIES, WEDDINGS



*Men of Note
Orchestra*
Jim Glover,
Gimli - 642-8167 or Loc 143

INTERLAKE PROPANE LIMITED

CENTRE STREET WEST, GIMLI
PHONE: Office 642-5176 House 642-5594

REDUCED PRICES ON - 1970 YAMAHA MOTOR CYCLES

	REGULAR	SALE PRICE
1 MODEL XS1 650cc 4 Cycle	1395.00	1250.00
1 MODEL R-5 350cc Twin	939.00	820.00
1 MODEL C53C 200cc Twin Elect. Start	700.00	630.00
1 MODEL L5 100cc Trail-Master	459.00	399.00
1-100cc Twin Used A1 Shape		180.00
1 C53C 200cc Twin Elect. Start 1970 used		600.00
1-1966 GMC 1/2 ton Motor excellent condition with Low-Boy Camper		1000.00

WE ALSO SELL YAMAHA and SNOW PRINCE SNOW MACHINES from 180 to 640cc
...17 Models. SNOW SUITS, BOOTS, HELMETS, MITTS

The MART

HOUSES

For Sale: 4-bedroom home, 129-4th Gimli. Phone: Danny - 642-5286.

For Rent: Modern 3-bedroom home. Completely furnished, reasonable rent, 5-2nd Ave. Phone: 642-5015.

AUTOMOBILES

For Sale: 1965 Ford Country Squire. Power brakes and steering. Auto. Can be seen at 60-6th Ave. Phone: 642-8259.

MISCELLANEOUS

For Sale: Woods tent 9 x 9 outside frame, excellent condition. Used twice \$25. One pair of chest waders size 8-\$15. One pair 825 x 14 W.W. studded S. Tires, used two years-\$4.00. Phone: 642-5328.

For Sale: 1970 Power tabogan, 18.5 H.P. used about 40 hours-\$625.00. 17" portable T.V. used one year - \$75.00. Phone: 642-8310.

For Sale: Polaroid land camera, nearly new. Best offer Phone: Chic at 642-5151 - Local 43.

NURSERY SCHOOL: to be held Monday, Tuesday and Wednesday mornings starting early September. Not restricted to residents of EGH. Contact - Sue Potter 642-5882.

For Sale: Hofner Electric Solid Body Guitar: This is a professional model. Three pick-ups which can be individually controlled; Bass, treble, solo, tremelo, Les Paul affect etc. are some of its features. Complete with cord and hard shell case. This guitar has never been used. Hohner 120 Bass Piano accordion black in colour, excellent condition. For appointment to view phone 642-5410.

For Sale: Wooden folding travel crib, compact when closed, opens to 41" x 24" folding pottie chair, carriage stroller. Enquire at 19-7th Ave. Gimli.

For Sale: Dress Form (adjustable) Phone - Marilyn 642-5410.

For Sale: Parker-Hale rifle .308, Winchester 1400 auto. shotgun, 12 gauge, Vent. Rib. Car radio-Reverberator Echo-Mate II. Two-15" Ford rims for wide tires. Phone: 7425.

Wanted: Winchester 30-30 in good shooting condition. Serial number must be less than 2,400,000, and old fridge or ice box that does not work. Phone: 642-5328.

Wanted: Home for good natured female, part border collie dog. Excellent with children. Inquire at 19-7th Ave., Gimli.

Lost: Ladies gold color "Telstar" watch at Gimli beach. If found contact Pte. Pearson - 5151 - Loc. 167.

For Sale: One T.V. Antenna - \$15. One wire fence, ideal for PMQs, 100 ft. long. Phone Al Fraser at 642-8146, PMQ 60.

PLAYSCHOOL: June Aldwinckle's Play-school begins Monday 14 September. For more information phone 8205.

CFB GIMLI AUTO CLUB

TIRES

EXCELLENT SELECTION
ON HAND.

W/W AND BLACK.

REASONABLE PRICES.

GOOD LINE OF ACCESSORIES

VIKING PHARMACY

PHARMACISTS: Ernest Stefanson, Keith Eyolfson

PHONE 642-5504 Emergency 642-8359/642-5900 Use your GM charge card WE DELIVER

SHICK

Stainless Steel Blades

10'S REG \$1.45 SPEC. 88¢

LADY PAT Hair Spray

REG \$1.49 SPEC. 99¢

NOXEMA

Feminine Deodorant Spray

REG \$1.49 SPEC. \$1.09

FRESH Deodorant

REG \$1.59 SALE 88¢

Plastic Garbage Bags 10'S

44¢

NOXEMA 6 OZ

REG \$1.35 SPEC. \$1.09

McLEAN'S Toothpaste FAMILY SIZE

REG \$1.29 SALE 99¢

JERGEN'S Lotion

7 OZ REG \$1.09 SPEC. 79¢

Be sure to come in
on school supplies
and see our specials

Commencing

AUG 31

our winter hours will be

SUN, MON 12NOON - 6PM
TUES, WED, THURS 9AM - 6PM
FRIDAY 9AM - 9PM
SATURDAY 9AM - 6PM

GIMLI HAPPENINGS

If your club or organization wishes to announce an upcoming event call or write B10, C.F.B. Gimli, Aspen Park, Manitoba or Phone: 642-5151 - Local 26.

- Sat. 29 Aug. CREATIVE ARTS FESTIVAL
Gimli Town-Cancelled.
- Sat. 29 Aug. DANCE-GREG-LEWIS ORCH.
2130 hrs. Cancelled.
Jr. Ranks Mess.
- Sat. 29 to "SUMMER CARNIVAL"
30 Aug. 2000 Free, Open
- hrs. Sat. and DANCE & NOVELTY NIGHT
- 1100 Sun. FIELD DAY-C.F.B. Gimli
- Sat. & Sun. PUBLIC SKATING
29 & 30 Aug.
1400 hrs. Gimli Arena.
- Sat. & Sun. HOCKEY-GIMLI WOLVES
29 & 30 Aug. vs. WINNIPEG TEAMS
1930 hrs. Gimli Arena.
- Sun. 30 Aug. MOVIE-"GUNS OF NAVERONE"
2000 hrs. Jr. Ranks Mess.
- Sun. 30 Aug. LEGION FAMILY PICNIC
Husavic, Manitoba.
- Mon. 31 Aug. GOLF - LADIES DAY
1300 hrs. C.F.B. Gimli.
- Thur. 3 Sep. GRADUATION - 6904
1900 hrs. C.F.B. Gimli.
- Sat. 5 Sep. BEST GOLFER/DANCE
2100 hrs. John Nelson's Stereo.
Jr. Ranks Mess.
- Sun. 6 Sep. MOVIE-"CAT BALLOU"
2000 hrs. Jr. Ranks Mess.
- Fri. 11 Sep. DUGALD FASHION REVIEW
2000 hrs. Base Theatre.
- Sat. 12 Sep. MIXED GOLF
Pte's, Cpl's & Sgt's
C.F.B. Gimli.
- Sun. 13 Sep. MOVIE - "LUV"
2000 hrs. Jr. Ranks Mess.
- Sat. 19 Sep. DANCE - CASUAL
2030 hrs. Officers' Mess.
- Sat. 19 Sep. DANCE to "THE REBELS"
Music to Please all Ages
Jr. Ranks Mess.
- Sun. 20 Sep. MOVIE-"WATER HOLE #3"
2000 hrs. Jr. Ranks Mess.
- Sat. 26 Sep. DANCE
John Nelson's Stereo.
Jr. Ranks Mess.
- Sat. 26 Sep. FALL.....BALL
1930 hrs. "Blue Tones" Orchestra
Sergeants' Mess.
- Sat. 26-27 CENTENNIAL AIR SHOW
September St. Andrew's Field.
- Sun. 27 Sep. MOVIE-"IPRESS FILE"
2000 hrs. Jr. Ranks Mess.

Starlite Theatre

LET THE BIRDS DO IT

Tuesday September 1 General
100 minutes 1:30 p.m.

CASTLEKEEP

Thursday September 3 Restricted
125 minutes 8:00 p.m.



Viking Motor Hotel LTD
PHONE 642-5181 P.O. BOX 131

- 21 Units -
- Air Conditioned -
- Cocktail Lounge -
- Sauna Baths -
- Dining Room -
- Banquet Facilities -
- Beverage Room -

Exotic Dancer Monday & Tuesday
Smorgasbord Sun
BAND Wed, Thr, Fri, & Sat.

Party Ice For Sale

Phone for
reservations

Cor. Hwy.
No. 9 and
Centre St.

GIMLI
Manitoba
Canada

LATE ADDITION

THE MART

Lost: Ladies handbag and wallet containing valuable papers in vicinity of the Gimli wharf on Wednesday --- Reward offered for return of papers. Phone: 642-5955.

THE FRAMFARI X-WORD

Y I N O R A C A M O S H S I F
E T S E H C A E P L R S T L P
N M D O M H E R O I A A L A L
O E A A U E S E T V E E A E U
H M C E E P A T A E P P S V M
G G A U R R U T M S E C I P S
R N N E T C B U O P N S G G E
A S R I R T E B T M I L K C O
P E N O D C E C R T R O X O T
E G G A C D N L I A A I E F A
F N R M E O U U A R G K C F T
R A J A M B R P E T R E S E O
U R T E O F L O U R A R N E P
I O L S L A E R E C M E L I O
T R A G U S E L B A T E G E V

Listed below are the words that you will find hidden in the puzzle above. These words are spelled out in all directions - so look very carefully. By assembling the letters that remain, in order, you will find today's hidden words which will be published next week. This week's hidden words have 19 letters.
LAST WEEK'S ANSWER: The big ones that got away.

GROCERIES

- | | |
|------------|-----------|
| BEANS | MEAT |
| BREAD | MILK |
| BUTTER | OIL |
| CEREALS | OLIVES |
| COFFEE | ORANGE |
| CORN | OXO |
| CREAM | PEACHES |
| EGG | PEAS |
| EGGS | PEARS |
| FISH | PLUMS |
| FLOUR | POTATOES |
| FRUIT | PUDDING |
| GRAPEFRUIT | RICE |
| HONEY | SALT |
| ICE CREAM | SOUP |
| JAM | SPICES |
| LEMON | SUGAR |
| LETTUCE | TOMATO |
| MACARONI | VEAL |
| MARGARINE | VEGETABLE |
| | VINEGAR |