



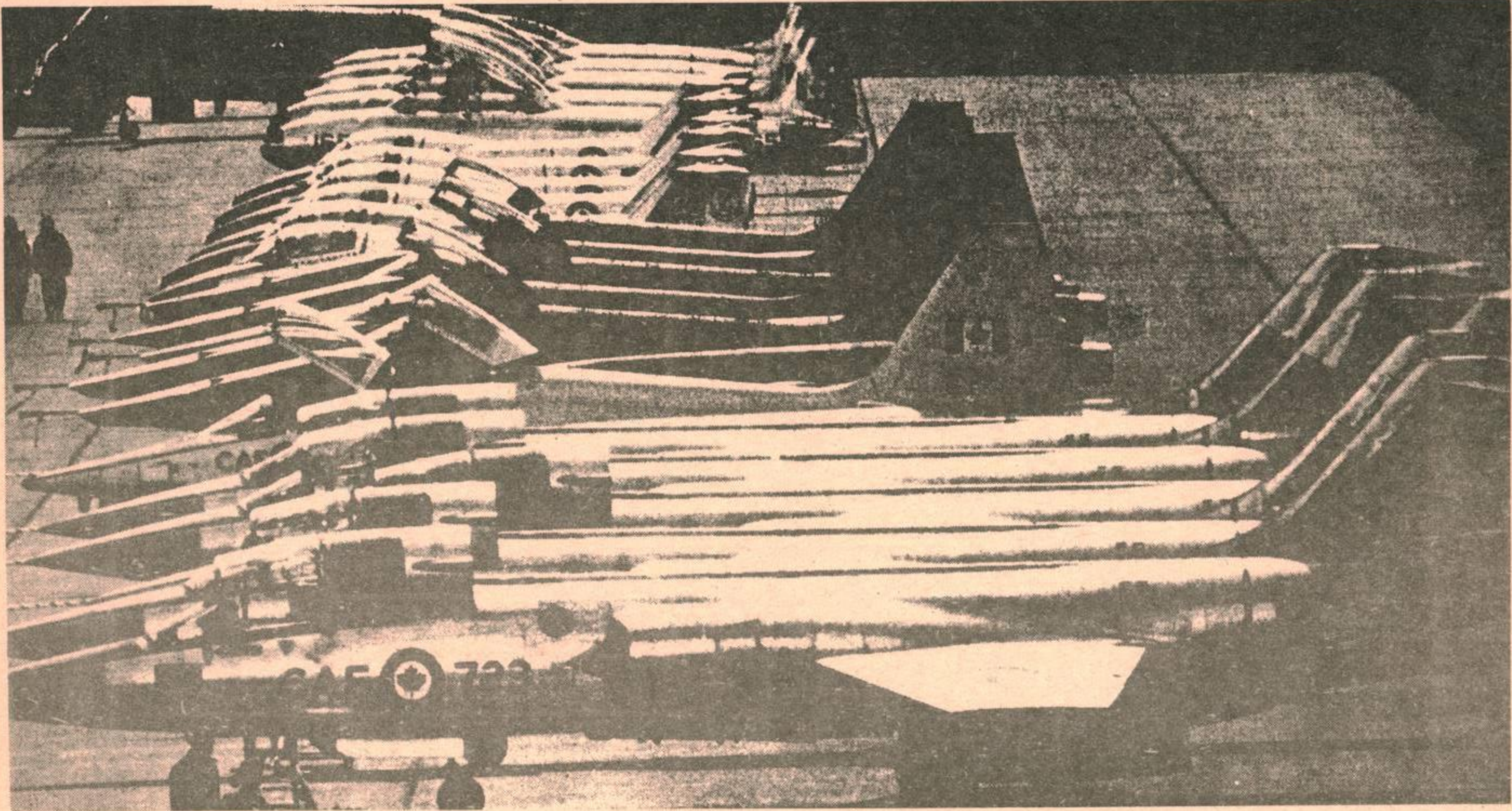
# Framfari



VOLUME 1 NUMBER 29

C.F.B. GIMLI, ASPEN PARK, MANITOBA

FRIDAY AUGUST 21, 1970



PART OF THE MILITARY LINE-UP AT ABBOTSFORD. TWICE THE SIZE OF LAST YEAR'S CONTINGENT, THE CAF CAME IN AND WENT OVER BIG

## Canadian Forces at Abbotsford

The Abbotsford Air Show -- Canada's first National Airshow and now undoubtedly the largest show in North America, opened its gates this year to over 130,000 visitors and aviators during its four day period.

Spectators gasped as the 30 odd Armed Forces Aircraft flew and performed at maximum performance but the highlight of the show was the daredevil precision formation flying by the U.S. Navy's Blue Angel's, flying the supersonic Phantom aircraft.

Thrilling the crowd this year with highly skilled precision flying was Cliff Howard in his home built T-Minus-II cutting a ribbon at 12 feet above the ground.

Labelled as fantastic, as always, in his Chipmunk aircraft was Art Scholl with an unequalled flawless performance.

Sunday's show was the best of all, with over 70,000 people in attendance, every parking lot filled to capacity and cars lined up at a dead stop for 21 miles to Vancouver.

See also:-G.S. Team - Page 11

- Photo Tabloid - Pages 12 & 13



Photos by Plainsman

# SOUND OFF Letters We're Glad Better get

Sir:

The last two issues of the Framfari have carried articles opposing the proposed RCAF Memorial. The generally feeling put forth in these letters, I have noticed, are those felt by many with whom I have spoken. As a matter of fact, there have been surprisingly few persons in favour of the headstone idea. I am inclined to be against it myself; my reasons are no more original than those already published.

What I would like to know is who are the people in favour of the Memorial, and what are their reasons? With a sound, logical explanation, I am sure there could be many more of us in favour of this "thing". Can no form of attack instill a response from your ranks?

C.W. Potter.

## Card of Thanks

May I, through your paper, say good-bye and thank you to the many people on this Base and in the immediate area. The assistance and co-operation received from every section on the Base and from the Town of Gimli, especially the RCMP Detachment, has made the past four years more bearable. There have been some rough times and many good ones and to be able to share them with you has meant a great deal.

Lue and Terry Anne join me in wishing all of you every success in the future and hope that the uncertainty of the future of this Base will soon be resolved. Once again, so long and thanks so very much for everything.

Dave MacNamee  
The Friendly Sheriff.

## We Never Received

A New York Coffee Company sent a shipment of coffee to an account in Hamburg, Germany. Enroute, rats cut the coffee bags up, nested in the coffee and damaged the shipment. The shipping concern, however, sewed up the bags and sent them on their destination. Two weeks later the New York Company received the following letter from the account.

135 Wilhein Strasse,  
Hamburg, Germany,  
American Zone.

Andrews Coffee Co.,  
335 West 139th Street,  
New York, N.Y., U.S.A.

Shtneltmen:

Du last tu packeahiges uff koffee is got from yu voss mit ratt schidt germixt. Der Koffee may be guttenuff, but the ratt schboils der der trade ve got.

Ve did not see der ratt schidt in der sembles wish yu send befor to us. Wiss taken to much time to pik der ratt schidt from der koffee oudt. Ve order frum yu der kleen koffee and yu schippt germit mit der koffee, schidt.

It was mischtakes --- Yes, No???  
Ve like yu to schipp us der koffee in vun sac, and der ratt schidt in vun odder sac, den ver germix to sute der kostomer.

Von't yu write, plees, if ve shid schipp bak der schidt, and kip the koffee, or kip der schidt and schipp bak der koffee, or do you vant ve shud schipp bak der hole shidtenn verks.

Ve vant to do vat is fidt in diss matter, vut we do no lik is dis dam schidt bizness.

Mit such respect  
(signed) Hans Vruder.

Pea Ass Iss der preice der same midt schidt, midout?

"The population of this country in which we live is 185 million but there are 87 million over 60 years of age, leaving 98 million to do the work.

People under 21 total 54 million, which leaves 44 million to do the work.

Then there are 21 million people employed by the government and that leaves 23 million to do the work.

There are 10 million in the armed forces, which leaves 13 million to do the work.

Deduct 12,800,000, the number in state and city offices, and that leaves 200,000 to do the work.

There are 126,000 in hospitals, insane asylums and so forth, which leaves 74,000 to do the work, but 62,000 of these are bums or others who won't work -- so that leaves 12,000 to do the work.

Now it may interest you to know that there are 11,998 people in jail so that leaves two people to do the work. That's you and me, brother -- and I'm getting tired of doing everything myself. "So Why Not Volunteer Your Help".

## BIRTHS

Glynn and Clarice Chambers are pleased to announce the arrival of their centennial project a son  
ERLING SCOTT

on the 12 of August 1970 weighing in at 7 lbs. 6 oz. Both mother & son are doing well.



**CENTRE ST. WEST,  
GIMLI**

**PAUL FIRMAN**

**642-5007  
642-8857**

**SALES & SERVICE**

**GEORGE'S TV 70**

**NEW STORE HOURS**

JULY THRU AUG **MON-FRI 5-10PM  
SAT 10AM-6PM**

FRAMFARI is published weekly for distribution on Friday. Opinions expressed are those of the writers and do not necessarily reflect Official Canadian Forces Policy. The Editor reserves the right to edit all copy and advertising to suit paper policy. All correspondence should be addressed to: Editor, Framfari

Aspen Park, Manitoba  
Phone: 642-5151 - L126R2

Deadline for all copy: 2:00 pm Monday

**PUBLISHER**  
....Col. J.F. Dunlop  
Base Commander

**BUS. & PROD. MGR.**  
....Maj. A.C. Platz -L57

**EDITOR**  
....J.F. Bennett -L154

**SPORTS EDITOR**  
....C. Potter -L37

**WOMEN'S EDITOR**  
....Mrs. Betty Bennett -7964

**ADVERTISING MANAGER**  
.... K.C. Birch -L 37

# POLLUTION

-DIX-

1. DON'T LITTER. Teach your family not to litter -- from the car, sidewalk, campsite, at work, school or home. It costs 30 cents of your tax money to pick up each roadside beer can (This does not include disposing of it) and the average mile of highway has 590 such beer cans -- and 770 paper cups, 730 cigarette packs, 360 bottles, and 90 beer cartons. Motorists drop 15,000 pieces per mile per year in America. What a savings of scenery AND money if we ALL QUIT LITTERING!

2. DON'T USE NON-DEGRADABLE PACKAGING. You, the consumer, have unlimited power to change the packaging industry. The plastic bags which choke fish and fowl to death, the styrofoam packaging and plastic containers which defy destruction, the plastic beer can loops which have choked sea birds to death, and all forms of "immortal plastics" which are used only once then discarded, can be used NOT AT ALL if enough people refuse to buy products contained in them.

3. BUY ONLY DEPOSIT BOTTLES. Each returnable-type bottle is used to make 19 round trips before retiring. Most of today's bottles are junked after one usage. The power of the consumer has already been displayed here, as the bottle industry has changed their \$7.5-million advertising program from stressing no-deposit bottle to stressing DEPOSIT bottles.

4. TEACH THE CLEANLINESS HABIT to your children, from infancy upward. If children have the habit of picking up after themselves, throwing things into the wastebasket ONLY, not throwing away items that are STILL USABLE, they will not increase the "per capita" trash that experts are predicting by 1980.

5. PICK UP LITTER. Of course it would be impossible for just a few people to pick up all the litter. But you can make your world neater than when you found it. Pick up litter around your home, your yard, your office, your school, your campsite or motel room; don't throw garbage under your theater seat or basketball bleacher.

6. BUILD LIFE INTO YOUR CAR. Over seven million cars are junked annually, many of them abandoned by the roadside. That's two tons of pollution that can be prevented by a little care. The average car coming out of Detroit has a total life span of six years (it was 10 years a decade ago). Much of this is OUR

fault. With careful driving and maintenance, and limiting our trips to the necessary ones, we could double the life of our cars. And when it wears out, sell it to a steel scrap agent, DON'T ABANDON IT!

7. RECYCLE YOUR NEWSPAPERS. One half of all household trash is paper or paperboard products. Much of this is newsprint, with a Sunday edition in a large city weighing as much as five pounds! Many paper companies are beginning to recycle newsprint for unlimited reuse. For every 118 pounds of old newspapers you return, you save one tree, say the company spokesmen. The San Francisco Examiner reports, "The only 'X' in this equation is the willingness of individuals to save old newspapers as a personal contribution toward preservation of the quality of the total environment".

8. START A COMPOST HEAP. Less than one percent of municipal trash is eventually composted, but a much larger percentage of your household trash could and SHOULD be. Organic materials -- egg shells, meat by-products, fruit and vegetable waste, etc. -- should be returned to the soil by natural means. Learn the principles of composting and build a compost pile in your backyard. But be careful to follow proper health rules in composting.

9. BUILD CRAFTSMANSHIP into what you make. If YOU work in a factory, or if you women make clothes or crafts at home, build a long life into what you make. If ALL our manufactured products were constructed with care, a great number of TV sets, clothes, cars, appliances,

and other prematurely defective items would not enter the trash heap so soon.

10. RECYCLE AS MANY ITEMS AS YOU CAN. This applies not only to newspapers, but a multitude of items. Various companies buy old no-deposit bottle or aluminum beer cans for 1/2 cents each. Other organizations have "paper drives." If your clothes, toys, or furniture are old but usable, don't "junk them," but contribute them to some charitable group which can continue USING the items. Before junking any item, ask yourself, "Can this be used again?" Once it enters the garbage can, nobody uses it!

COMING TO  
GIMLI SOON !!!

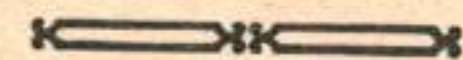
MANITOBA  
CENTENNIAL CARAVAN

23 August 1970  
10:00AM to 10:00PM

Location: GIMLI ELEMENTARY  
SCHOOL GROUNDS

Admission: FREE

(Watch for additional events  
for this day, plans are now  
being finalized)



## VACATION TIME!!

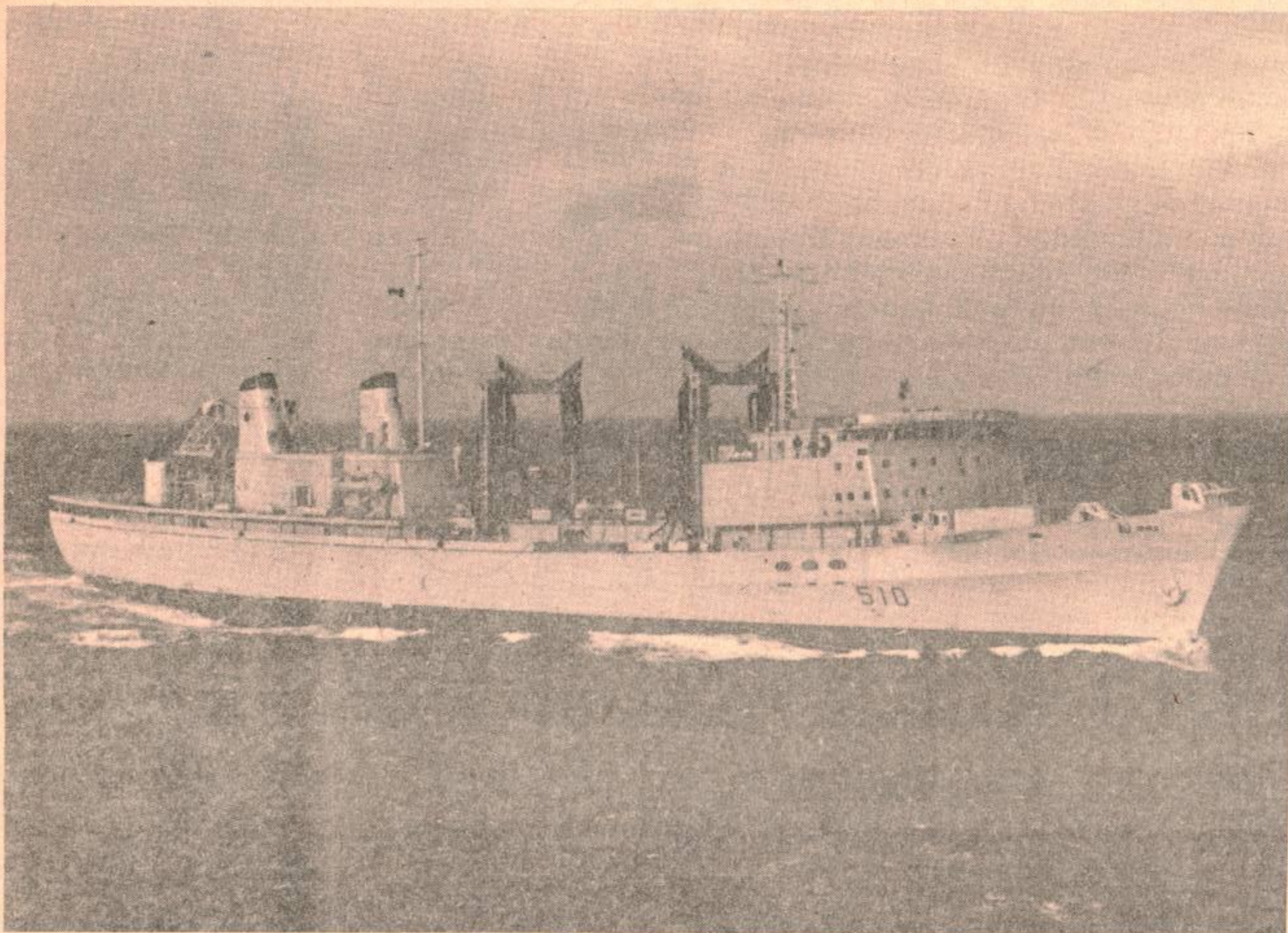
*We Have an Excellent Line  
of AUTO ACCESSORIES!*

*Come in and see us...*

WHERE? — — —

**BASE AUTO CLUB!**

INSECT STRIPS AND CHARCOAL NOW AVAILABLE!



## THE 'PRESERVER'

### DO WE DESERVE 'ER?

SAINT JOHN, N.B. -- Boatswain's pipes, a band, speeches, the ship's company and hundreds of spectators were all part of the ceremony held here August 7 as HMCS Preserver was commissioned into the Canadian Forces.

During the commissioning ceremony, Preserver's commanding officer, Captain Mark Mayo gave the order for the ship's company to man the ship. After the crew had marched on board he was piped aboard.

Guest of honor for the ceremony was the Hon. J.E. Dupe, Minister of Veterans Affairs. The official party included General. F.R. Sharp, Chief of the Defence Staff; Vice-Admiral R.L. Hennesay, Chief of Personnel at CFHQ; Rear-Admiral H.A. Porter, Commander Maritime Command and Rear-Admiral S.E. Paddon, Deputy Chief of Engineering, who accepted the ship on behalf of the Canadian Forces.

Preserver is the last of three operational support ships to be built for Maritime Command and will join with her sister ship Protecteur and will call Halifax her home port. Provider, the first of the operational support ships built seven years ago is based on the West coast at Esquimalt, B.C. The three ships give Canada's maritime force greater mobility and time on station when conducting operations at sea.

Preserver has a limited sea lift capability in that she can carry land force vehicles as well as an increased helicopter support role with the facilities to provide maintenance for three Sea King helicopters in her hanger.

Her refueling capabilities are such, Captain Mayo says, that "she can refuel a destroyer at sea in about the same time as a family car can be refuelled at the neighbourhood gas pumps".

Much like a seagoing supermarket, Preserver carries 12,000 tons of replenishment cargo including spare parts, oils, fuels, ammunition, water and the sundry items required by a modern navy at sea.

# EATONS

CATALOGUE SALES OFFICE

## FASTEST SERVICE

IN GIMLI

Phone

642-5158

Catalogues available

CATALOGUE

& RETAIL SERVICE

## LAKEVIEW Coin Laundry

& DRY CLEANING

66 First Ave.

## FUN FAIR

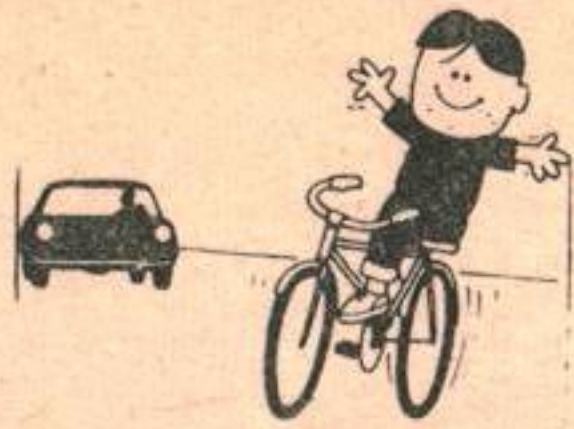
Sunday Aug 23rd

2 p.m - 8 p.m

Park Pavilion

BAKE TABLE, BINGO,  
GAMES, etc.

## GIMLI HOSPITAL AUXILIARY



**'BICYCLE SEASON'**  
Means extra caution  
for motorists

Bikes and tricycles will soon be re-appearing on city streets and sidewalks with the advent of School classes

Watch out for young cyclists, especially during week-ends and holidays. They'll be a little wobbly after not using their bi-

cycles all winter and many of them will be inexperienced learners.

Parents of bicyclists should make sure their youngster's bike is in good mechanical condition ... good brakes, steering and tires. If the bicycle is used after dark, it must also be equipped with a white or amber front light, a red reflector or light on the rear red reflective material at least 10 inches long and one inch wide on the back fender, and white reflective material at least 10 inches long and one inch wide on the front forks.

If you're buying a bicycle for your youngster, don't make the mistake of buying him one he must "grow up to". A bicycle too big for a small child is a real accident hazard. It's easier for a youngster to accommodate himself to a small bicycle than to try to handle one that is too large. A low cross-bar bike or a girl's bike is the safest bet.

**BAND  
CONCERT**

Park Pavilion

Sunday Aug 23rd

1:30 p.m - 2 p.m

**CFB GIMLI  
BAND**

**CHUDD & SONS**

Gimli's CHRYSLER Dealer

SHELL oil products

642-5329

**GIMLI MOVING & STORAGE**

- FAST FREIGHT AND EXPRESS TO WINNIPEG BEACH, GIMLI
- \*\* PACKING \*\* FURNITURE \*\* SHIPPING \*\*
- GOODS INSURED \* ANYWHERE IN CANADA \* RELIABLE SERVICE
- Gimli Phone 642-5269 Winnipeg Phone 774-2259



**TOM-BOY**

**WHERE FRIENDLY PEOPLE SAVE YOU MORE!**

**BLEACH** JAVEX  
**SALMON** GOLD SEAL  
SOCKEYE

64 FL. OZ. CONT. **49¢**  
6 FL. OZ. TIN **69¢**

TOM-BOY "BIG T" FEATURE!

MANITOBA FINE WHITE

**SUGAR**

\$ **2.95**  
25 LB. BAG  
LIMIT ONE PER CUSTOMER WITH FOOD PURCHASE

TOM-BOY "BIG T" FEATURE!

AYLMER CANADA CHOICE ASSTD.

**PEAS**

\$ **5**  
14 FL. OZ. TINS



**PIE**

**FROZEN FOOD**

Mc CAIN  
APPLE

8 INCH PIE **49¢**

**MEAT MAKES THE MEAL!**

**TOM-BOY EXCELS IN PRODUCE!**

"IDEAL FOR POT ROAST"  
**CHUCK ROAST**  
LB. **65¢**

BONELESS - CUT UP OR BY THE PIECE  
**STEWING BEEF**  
LB. **89¢**

GREEN THOMPSON SEEDLESS

**GRAPES**  
LB. **45¢**

SUNKIST

**LEMONS**  
6 FOR **39¢**

PRICES EFFECTIVE AUG. 21, 22 & 24, 1970.

**TOM-BOY**  
growing with Manitoba,  
to beat '70!



Gimli  
Tom-Boy  
Gimli, Man



**TOM-BOY**



WE RESERVE THE RIGHT TO LIMIT QUANTITIES.

# Mythology of drugs

Drugs and youth have become the twin mythologies of our time, abounding in glib talk about sub-cultures and alienation, self-liberation and generation gaps.

Generational conflict flourishes in recriminations. Adults are encouraged to wallow penitentially in quilt, youth in self-pity.

The drug problem is the clearest illustration of the generation gulf. It is deepened by irrationality --- society is empty and contemptible, say the drug messiahs, so drop out. Turn away from the cardboard life and turn on. Find yourself. Have a pleasant trip. God speed.

Adult props are more prosaic:booze and pills.

The whole thing is insance. We --- all of us --- need to be turned off, not turned on, but we can't find the switch.

Attributing the drug cult of youth to adult failures and indifference, however, is an excuse rather than an explanation. It is part of the mythology.

Society hasn't provided enough for youth? The lament grows tiresome --- and it must seem especially ironic to the chronically poor and to the dispossessed minorities, like Indians, for whom society has provided very much less in human terms.

Where youth is concerned, society has been guilty of indulgence as much as neglect.

It has erred most conspicuously in the illusory veneration of material values, in the pursuit of artificial comforts and in its capitulation to sham. Yet the imperfections and omissions, though abundant, are not absolute.

Drugs are a means of escape, both from the environment and from the self. The gravest offences their young users commit are against themselves. By Crippling their own minds and bodies, they are sacrificing their most precious possessions --- the power to choose, to judge and to reason.

For that wilful loss, the individual must bear as much responsibility as the society around him.

The Winnipeg Tribune, Thursday Aug 6/7

## TAXES

Tax his land. Tax his wage  
Tax the bed in which he lays  
Tax his tractor, Tax his mule  
Teach him taxes is the rule.

Tax his cow, Tax his his goat  
Tax his pants, Tax his coat  
Tax his ties, Tax his shirt  
Tax his work, Tax his dirt.

Tax his chew, Tax his smoke  
Teach him taxes is no joke  
Tax his car, Tax his ass  
Tax the roads that he must pass

Tax his booze, Tax his beers  
If he cries, Tax his tears  
Tax his ill, Tax his gas  
Tax his notes, Tax his cash

Tax him good and let him know  
That after Taxes he has no dough  
If he hollers, Tax him more  
Tax him till he's good and sore

Tax his coffin, Tax his grave  
Tax the sod in which he lays  
Put these words upon his tomb  
Taxes drove me to my doom.

And when he's gone we won't relax  
we'll still be after  
INHERITANCE TAX

# HOTTEST DISCOUNT VALUES OF THE YEAR

**GORD'S SOLO**  
**GIMLI, MAN.**

**SOCKEYE SALMON**  
**67¢**

**Solo STORES**

**SPARE RIBS**  
**69¢**

**PORK Butt Roast** 49¢  
**PORK Rib End** 69¢  
lean roast or chops

14¢ OFF 64 FL. OZ.  
**FLEECY**  
**79¢**  
NET

**JAVEEX** 64 FL. OZ. 49¢  
**IUDRY** 12¢ OFF NET 93¢  
**CAMAY** 6" WHITE OR PINK 89¢  
**TIDE** KING 25¢ OFF NET 1.69

**Nectarines** 3 lb/\$1.00  
**BANANAS** 15¢/lb  
**ORANGES** 138's 49¢/doz.

**SOUPS CLARK** 6 TINS 79¢  
**CR. CORN** 5 TINS \$1.  
**MARGARINE** 2 LBS 75¢  
**JUICE** BRIGHT'S TOMATO 2 TINS 75¢  
**BEANS** LIBBY'S 4 TINS 95¢



OUR  
DISTRIBUTION  
MANAGER

**IOS**  
CANADA

*Fortunes flow  
Through your Hands*

If Your Average Monthly  
Income is \$600.00. Your Total  
Earnings in 30 Years Will Be

**\$216,000.00**

PART OF IT IS YOURS TO KEEP

How much have you kept so far?

Your I.O.S. Representative is:



**C. E. (Chuck) Keating — Maj. Retired**

He will be available in the  
Base Library on the second and  
fourth Friday of each month, from  
1:00 p.m. to 5:00 p.m. to dis-  
cuss your financial planning.

**INVESTORS  
OVERSEAS SERVICES**

383 York Ave., Winnipeg, Manitoba  
Bus. Phone: 942-3177—Res. Phone: 284-1102

**CENTRAL BAKERY**

BAKED FRESH DAILY

Sliced Bread

Seed Bread  
IRISH & RYE

Pan Bread

**Homemade Breads, Buns, & Cakes  
Imported Chocolates & Cheeses**

HOT PIZZA TO GO — Baked to your order in 15 min.

81 1st Ave.

**GIMLI TAILOR**



**Perth's**

CARRY & SAVE STORE

For house pick-up PHONE PERTH'S 642-5326

*SUITS  
and  
UNIFORMS*

Made to Measure  
four to six weeks

- Comforters
- Raincoats
- Sleeping Bags
- Bedspreads

**\$1.99** each

THIS WEEK'S **SPECIAL** AUG 22 — AUG 28

- Pants or Slacks
- Plain Sweaters
- Sport Shirts
- Skirts

**2 for 99¢**

- Dresses
- Blankets
- Cloth Coats
- Chenille Spreads

only **99¢** ea.

# RELUCTANT HERO

Cpl John McGhee, a fire fighter at CFB North Bay, performed an act which (in spite of this story) remains in the realm of pure charity. On the 28 of April, 1970, he saved the life of a young North Bay boy. For his action, he is being awarded a Certificate of Achievement by the

Ontario Council of Saint John Ambulance.

Cpl McGhee's action would never have come to light if it had not been for the gratitude of the young lad's mother. This is the type of man who is a true hero.

Mrs. Dyson, the mother of the young 8 year-old boy, phoned the Base Personnel Administrative Officer to ask him to thank Cpl McGhee for his quick thinking in restoring her son's breathing when he had collapsed unconscious in the driveway of their home. She felt that if it were not for Cpl McGhee the accident would have been much more serious.

Her feelings were fully substantiated in the investigation that followed her enlightening telephone call.

To quote from the commendation:

"Cpl McGhee found young Master Dyson, 192 Gordon Drive, North Bay, Ontario, in his (McGhee's) driveway on 28 April 1970, apparently the victim of a bicycle accident. The young lad's breathing passages were completely blocked with earth and gravel, and there was no indication of breathing, or heartbeat. Cpl McGhee immediately carried out the required treatment for asphyxiation namely, clearing the airways and applying Mouth to Mouth Artificial Respiration. When breathing had been restored evacuation to the local hospital was carried out by the local ambulance service, arranged by Cpl McGhee. It was later learned that young Master Dyson has a permanent heart condition which brought on the accident in the first place. He lapsed into unconsciousness and fell from his bicycle to the driveway."

"COULD YOU HAVE PERFORMED MOUTH TO MOUTH ARTIFICIAL RESPERATION IN THIS SITUATION." DO YOU KNOW HOW? OUR BASE RECREATION STAFF HAVE THE RED CROSS PHAMPHLETS.

# ACT

# AFFECT FORCES

OTTAWA (CFP) -- Remember waiting for the service vote to come in? It won't happen again.

The Canada Elections Act has been amended to allow members of the Canadian Forces to vote in federal general elections well in advance of civilian polling day. The votes will be announced election night with the rest of the country's returns.

The Canadian Forces' vote can now be taken two weeks before election day, tabulated and kept secret until civilian polls close.

To make this possible, nomination day in electoral districts will be held 21 days before election day instead of only 14 days in advance.

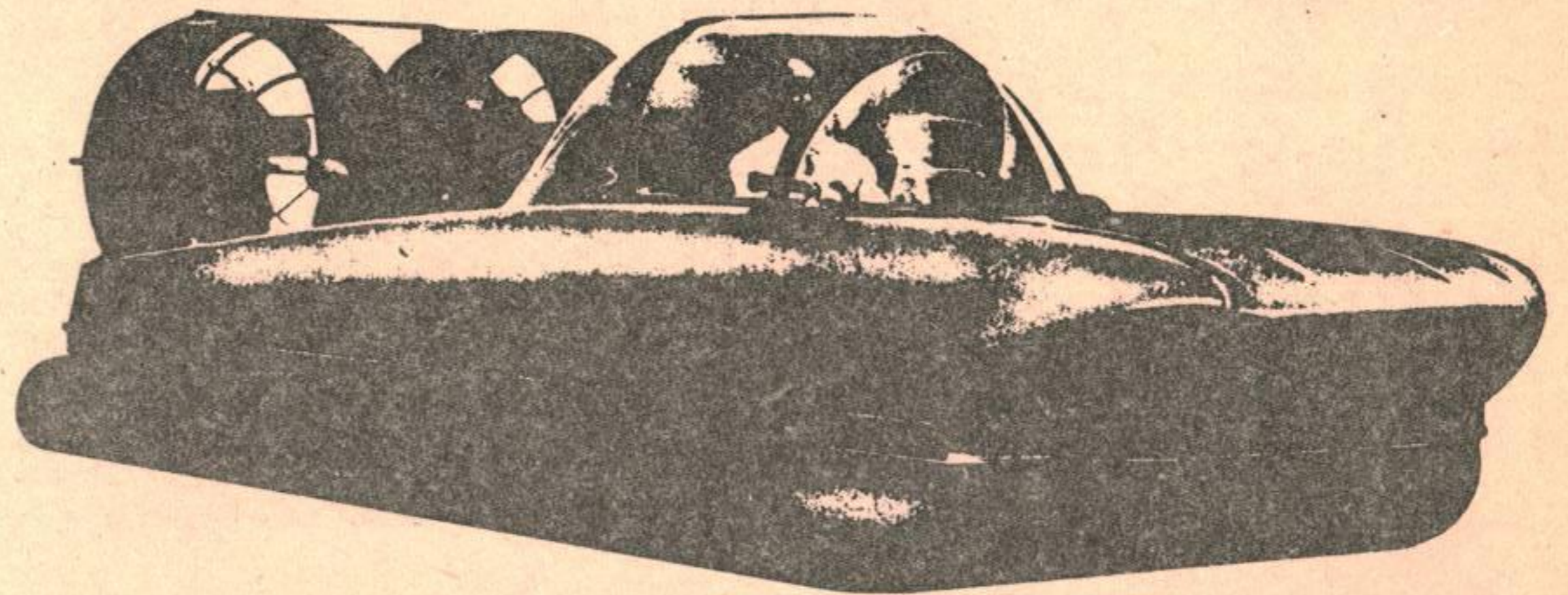
The June 26 revisions to the Elections Act also allow all eligible service dependants overseas to vote with members of the Canadian

British subjects, who are not also Canadian citizens, including those in the Canadian Forces, are also affected by the revisions. British subjects who were eligible to vote in the June 25, 1968 election will retain this eligibility until June 25, 1975. After that date, and in all other cases, only those who are Canadian citizens will have the right to vote.

Forces. Before, only wives could vote.

Under the provisions, Canadian public servants stationed overseas -- and their eligible dependants -- may now cast ballots in federal elections. Previously no provision was made for them to vote. Their votes will be tabulated and announced with the Canadian Forces' balloting.

## The Exciting **NEW** HOVEROVER



The HoveRover 2 Seater is a true Air Cushion Vehicle!



The Vehicle for **WORK...SPORT...YOU!**

OVER LAND

*Carries you over Land, Water, Swamps, Tidelands, Ice and Snow opening a NEW Concept in year'round recreation. Will climb grades and into areas that are inaccessible by boat or wheels...*

**\$3,995.**

OVER WATER



GIMLI HOVEROVER SALES

BOX 1046, GIMLI  
OFFICE 642-7275  
RES 642-5206

F0B OTTAWA



# MEET YOUR NEIGHBOUR

— ARNOLD B. OLSON

Cpl. and Mrs. Larry Stuber

Larry joined the RCAF in 1955 and has since spent nearly 10 years as a member of CFB Gimli crack Aircraft Servicing Crew.

Larry calls Medicine Hat, Alta. his home town while his wife Sylvia hails from Riverton. Three growing daughters Beverley, (12), Donna (11), and Sandra (6) complete the Stuber family.

Larry enjoys big game hunting and an occasional weekend fishing trip.

For those who just know they have seen Sylvia before, try Kardy's Hardware.



**K&W RENTALS**  
**(McLEODS STORE)**

**WE RENT**

- FURNITURE
- CAMP TRAILERS
- WHEEL BARROWS
- ELECTRIC DRILLS
- ETC.
- LADDERS
- APPLIANCES
- SANDERS

## GIMLI FLYING CLUB



**3 Cessnas**  
**1 Cherokee**

D.O.T. APPROVED  
Private  
Pilot Training

↑

COMMERCIAL  
Pilot  
Training

← →

INSTRUCTORS AND AIRCRAFT ARE AVAILABLE  
EVENINGS, WEEKENDS AND HOLIDAYS.

**CONTACT OUR MANAGER**  
 Box 122, C.F.B. Gimli - 642-5151, Local 120R3

## SELKIRK LUMBER COMPANY LIMITED

*Complete Building Supplies - Concrete Block Manufacturing*

SELKIRK 482-3141
WINNIPEG BEACH 389-2024
GIMLI 642-8255



On Monday night, the 17 of August at 10:00 p.m. lightning was reported at the CFB Gimli weather office from a squall line of several local thunder cells. Twenty-six minutes later, winds were gusting from 220° (M) at 20 to 48 MPH and just 35 minutes later all was calm.

The aftermath of this violent storm with winds in areas of Manitoba of up to 80 MPH resulted in power being cut off in Winnipeg for 1 1/2 hours while here in Gimli this 25 foot spruce tree fell across a 1965 Acadian parked in the driveway at 49-4th Ave. Damage to the car was reported to be relatively light with several dints and scratches in the roof.



The Framfari staff were on their toes the other day to capture this memorial picture of the firehall at work. Shown above are M/Cpl Jack Kearley, Cpl Dave Lythe and Pte Norm Lauzon watering a tree in front of the firehall.

**OFFICERS TAKE NOTE**

OFFICERS IMBALANCES - NEW FORCE STRUCTURE

Although a few classifications are forecast to have a small surplus by 01 Apr 73 there are no critical imbalances insofar as Officer classifications are concerned. Therefore a Plan Restore for Officers will not, REPEAT, will not, be necessary.

A large percentage of General Service Officer positions are established for Generic Groups of Officers, for example, Combat Arms, Engineer Gen or Air Gen. An even larger number are established for any officer regardless of classification. The establishment thus provides flexibility to permit employment of officers across a broad range of activities on the basis of their qualifications and/or experience. During the next two or three years more officers than usual in some classifications may be employed in such positions. Such employment will be challenging and will provide officers with a greater breadth of experience which in the long run should enhance career service.

Although overall status is satisfactory some surpluses will exist at certain rank levels. To offset the reduced promotion opportunity which would otherwise result, a plan to provide a minimum promotion flow over the next two years has been approved. Details of this plan will be announced shortly in a personnel newsletter. Promotions from Captain to Major which were temporarily suspended during development of the plan will be released shortly.

FramFoto

**ED MANDRYK C. D.**  
THINKS MILITARY

*Reducing Term for 25 Years-*  
Initial coverage  
of \$40,600.00, or \$200.00  
per month for 25 years.

20 YEARS OLD	5.37
25 YEARS OLD	7.37
30 YEARS OLD	9.17
35 YEARS OLD	12.37

or

*Initial coverage of*  
\$28,380.00, or \$200.00  
per month for 15 years.

40 YEARS OLD	8.77
45 YEARS OLD	12.57
50 YEARS OLD	20.57

*This insurance is non cancellable, and you have the right to convert with medical five years prior to expiration date of the policy.*

**NEXT TIME  
YOU THINK INSURANCE  
THINK OF  
ED MANDRYK C. D.  
1831 NESS AVE.  
WINNIPEG 889-2928**

**VISITING BASE LIBRARY  
on First & Third Wednesday**



CFB GIMLI GROUND SUPPORT TEAM, Abbotsford International Airshow  
7-9 August 1970

Rear Row (L. to R.) M/Cpl Crouch, Cpl Desveauy, Sgt Shermerhorn i/c, Cpl Rice. Front Row (L. to R.) Cpl Kroeker, Cpl Boehnke, Cpl LaGrange.

This crew provided servicing and maintenance for the six T33 aircraft which participated in this airshow.

We wish to thank the crew from Moose Jaw for their assistance and cooperation. It certainly was appreciated fellas. THANK YOU.

Sgt C.L. Shermerhorn,  
NCO i/c Gimli Team.

Photo by Plainsman

#### STUDENTS WIN AIR DIV AWARDS

LAHR, Germany (CFP) -- Four Canadians, one of them a serving airman, will share \$3,000 in scholarship funds through their academic prowess while attending schools in Germany.

Warrant Officer Sidney M. Jarvis, an air defence technician at Baden receives \$500. for his accomplishments while attending the 4 Wing senior school. He intends to continue his studies through the U.S. military forces at Heidelberg.

Miss Patricia Hoyt, daughter of Lieutenant Colonel and Mrs. A.G. Hoyt of Nanaimo, B.C., wins \$1,000. A student at the Lahr senior school, she will study this fall at the University of Waterloo, Ontario.

Miss Ronny Titterton, daughter of Major and Mrs. B. Titterton of Victoria, B.C., won \$1,000 and will enter the University of Victoria, B.C. She attended the 4 Wing senior school at Baden-Soellingen.

Miss Janice L. Zimmer, daughter of Master Warrant Officer and Mrs. P. Zimmer of Vancouver, a \$500. will study at the University of Victoria. She attended the Lahr senior school.

The One Air Division scholarship fund was established in 1962 to stimulate interest among Grade XIII students to go on to university. The money is provided through non-public funds.

# The true way to bank today

Combine a True Savings Account, paying an attractive interest rate, with a low cost True Chequing Account. Get more interest on savings, save on chequing, too.



**Bank of Montreal**

The First Canadian Bank

## GIMLI ARENA SCHEDULE

MON TO FRI

PUBLIC SKATING 8PM TO 10PM

SAT & SUN

PUBLIC SKATING 3PM TO 5:30PM

**HOCKEY GAMES** GIMLI WOLVES WILL PLAY  
TEAMS FROM WINNIPEG EVERY SAT & SUN  
7:30PM

There are still openings for  
the last two weeks of HOCKEY SCHOOL

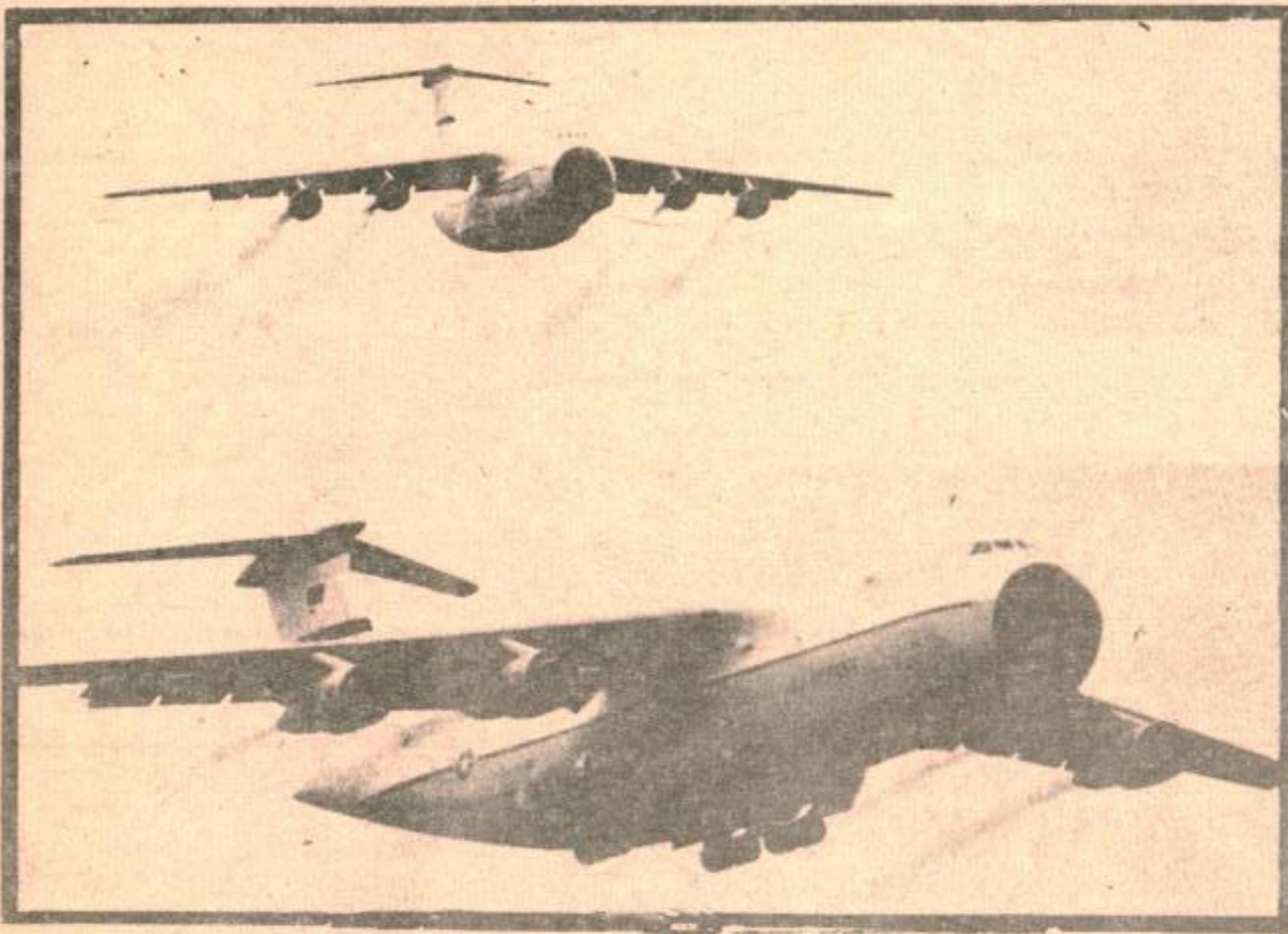
FOR  
**ICE RENTAL** SEE

JACK VALGARDSON OR THE CANADIAN PROFESSIONAL  
HOCKEY SCHOOLS  
BOX 263 WINNIPEG 1 MAN.

# ABBOTSFORD '70



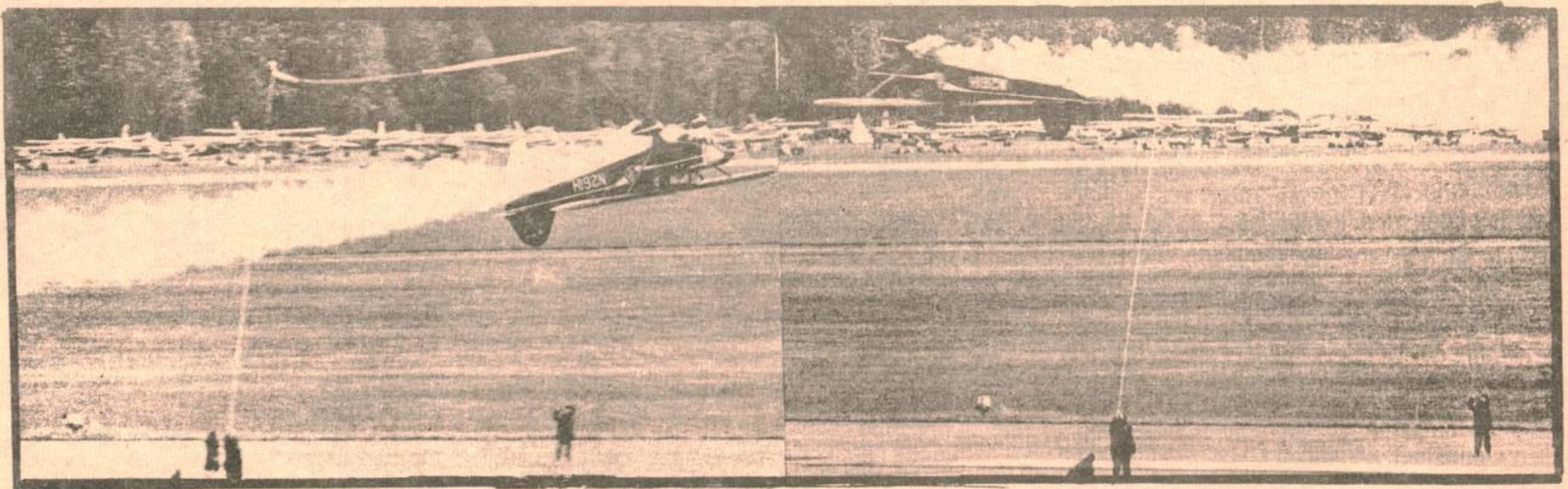
SARDINES?



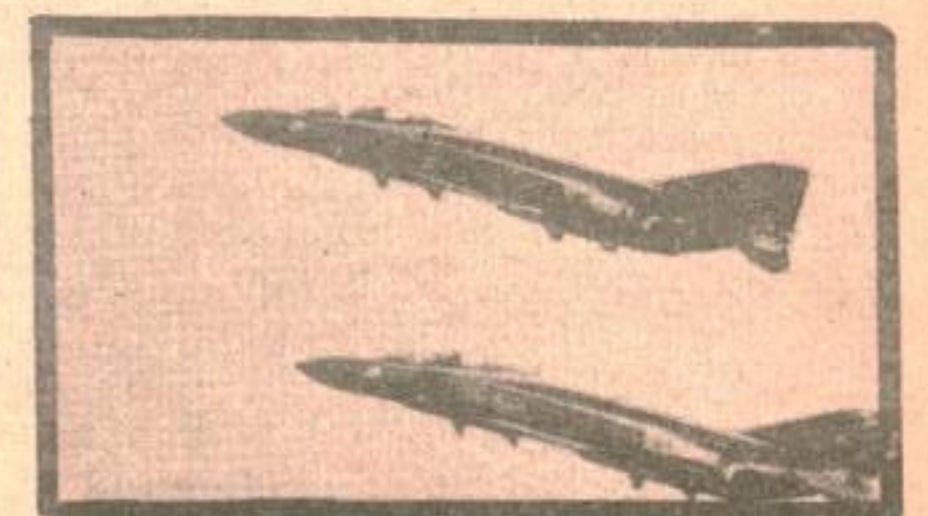
HOLY MACKERAL DEAH, ANDY!



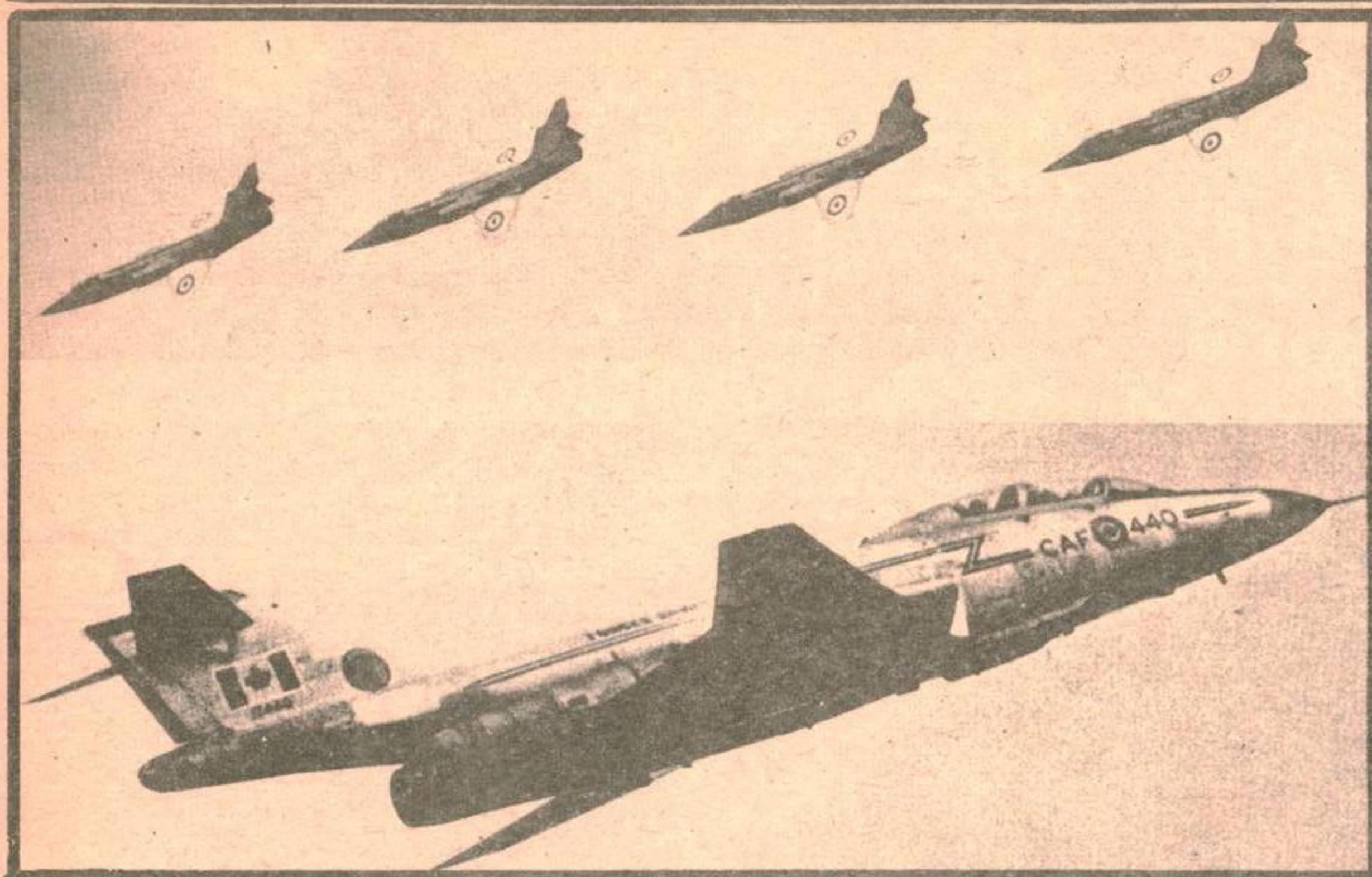
NICE OF YOU GUYS TO STOP BY!



YOUR TRAFFIC 12 O'CLOCK!



ANGELS, STOP LEFT!



4 BOGIES, 9 OCLOCK HIGH!



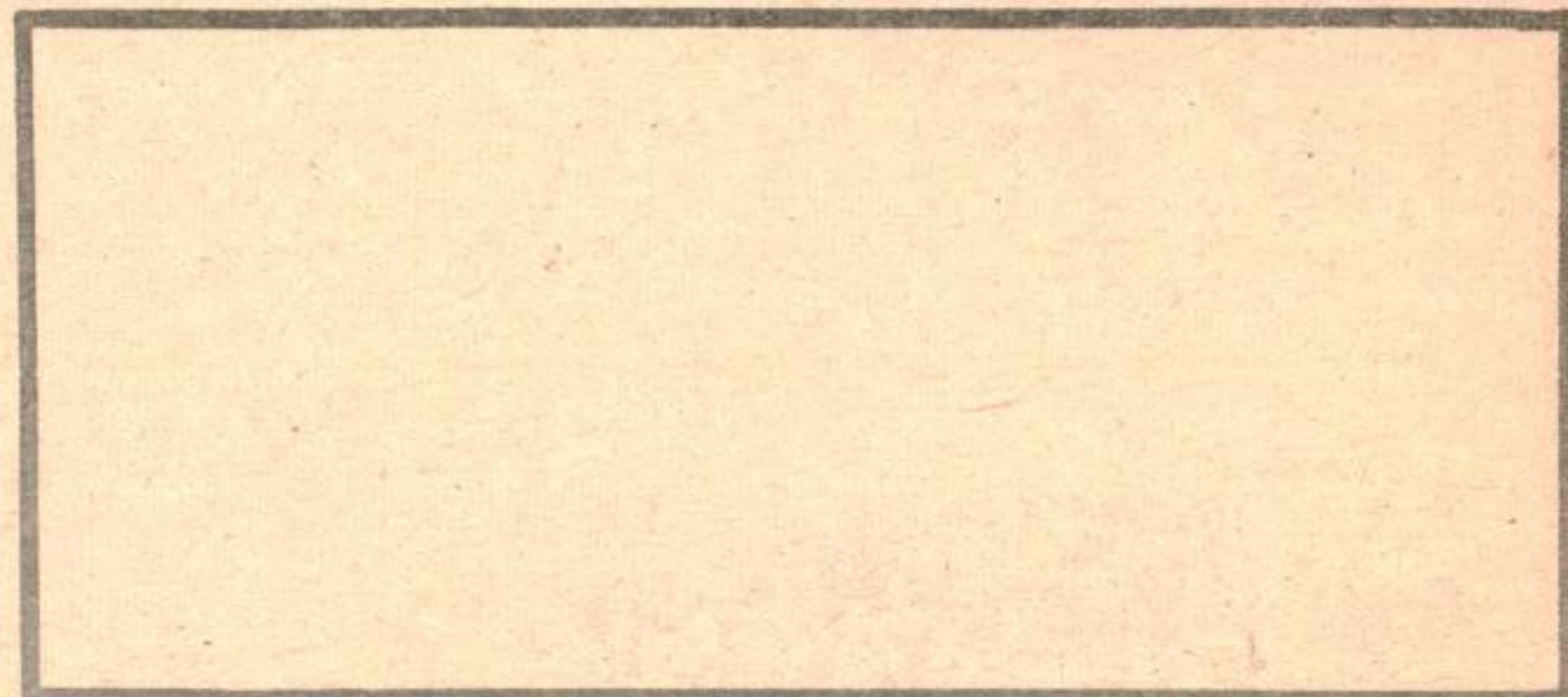
HELLO DEAH!



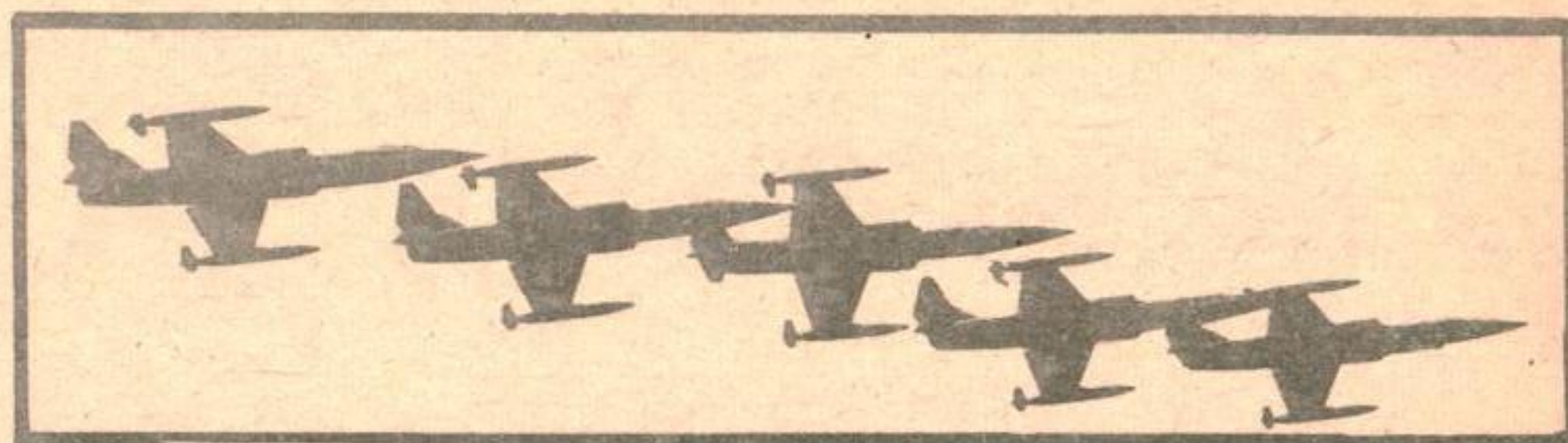
NOW WHAT?



DIRTY DOZEN (+1!)



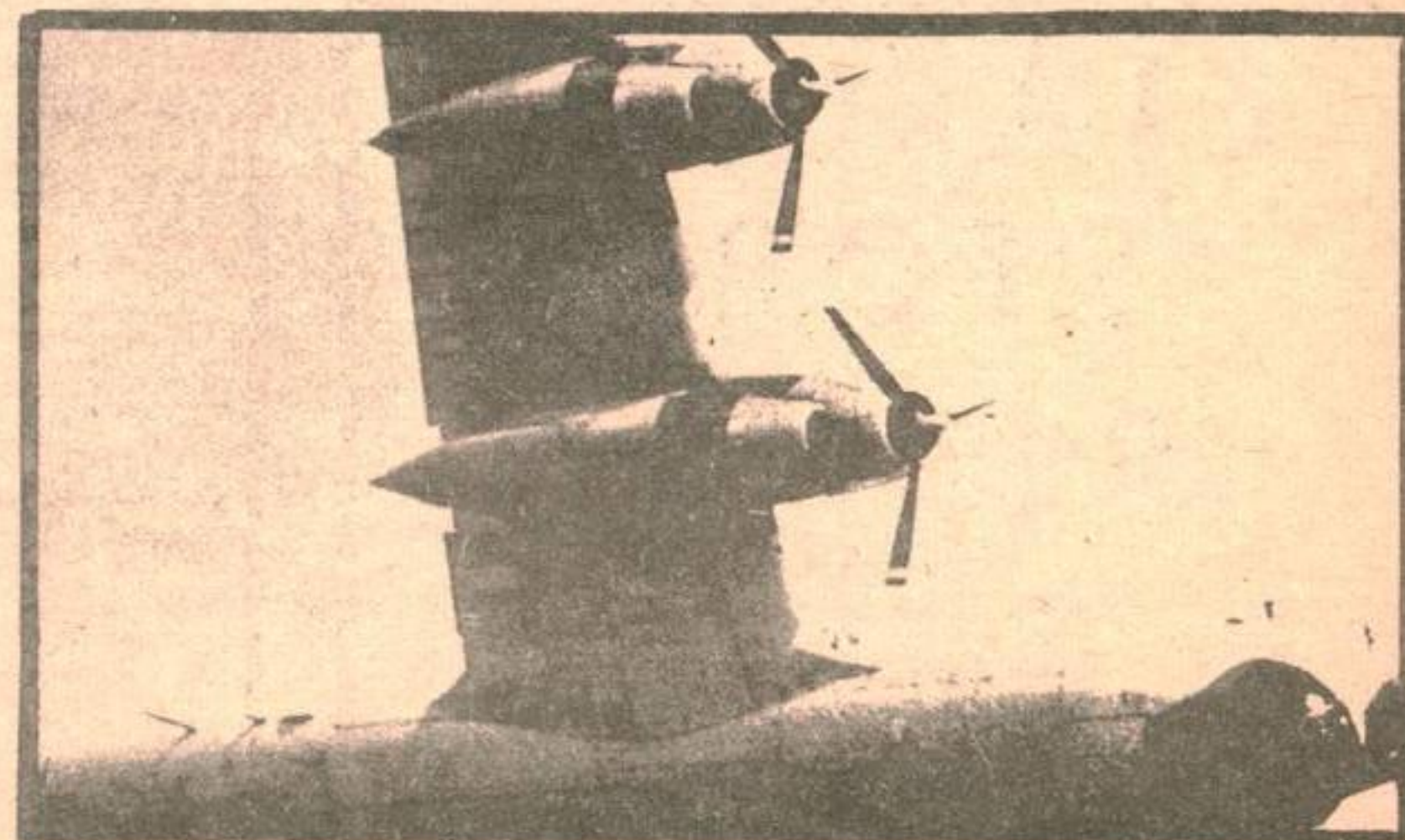
RUSSIAN YAK-40 AT ABBOTSFORD!



"THE BOYS"



APRES VOUS!



AW! IT WAS TOO NOISY ANYWAY!

# KINSMEN CLUB SERVES

During the summer of 1970, the Gimli Kinsmen Club has been providing a service to the Town of Gimli in two very important areas. The first, and perhaps most important in the line of safety, is the beach area patrol under the direction of Jim Sesak. The second is the park recreational program under the direction of Clarence McCloskey.

The July 14 issue of the Framfari carried a complete account of the beach patrol, the hours of supervision, and the services provided. The following pictures depict the professional approach of all members of the team.



Daryl - Chief Patrol on the watch.



Inservice Training - Keeping Prepared.



Carolyn and Diane - Instructing Children's Class.



Patrol Staff (L. to R.) Jim Sesak, Scott Purdy, Daryl Sangster, Michael Keefe.

FramFoto

The park program ran for four weeks during July, for two hours each day, five days a week. Under the watchful eyes of Phylis Larusson and Donna Dzydz approximately thirty children age 6 - 12 years received instruction in handicrafts and recreational activities. The following pictures show the children performing during Parents Day 1970.



Singing "We are from Gimli".



Children performing for their parents.

"DUST OFF YOUR SHOES"  
FOR THE DAY

## CFB GIMLI AUTO CLUB

TIRES

EXCELLENT SELECTION  
ON HAND.

W/W AND BLACK.

REASONABLE PRICES.

GOOD LINE OF ACCESSORIES

## TARGET STORE

Complete Family

Clothing

642-5246

Tues. to Thurs. 9am-6pm

Friday 9am-7pm

Saturday 9am-6pm

## FINLEY TV

— Service —

26 6th Ave, Gimli

642-5386

DIANE'S  
BEAUTY SALON

will be closed

AUG 10 - AUG 24

# FASTBALL

-Stan Robinson

## FALCONS 13 - MIXERS 5

On Tuesday evening in Selkirk the Falcons took another step closer to clinching the pennant with a 13 to 5 win over the Mixers.

The airmen got off to a fast start scoring five runs in the first inning on four hits and three bases on balls. The big hit was a home run by Bill Springsted. The Falcons sent ten men to bat in the inning.

Tom Wadey held the Selkirk men to three hits until the fifth inning when a couple of errors put men on base and a couple of bad bounce singles scored three runs. Paul Chellew came in and after giving up two hits retired the side but not before Selkirk had scored five runs in the iming. The airmen scored in the fourth, fifth, sixth and seventh innings to take the game easily. Paul Chellew got the win. The Gimli pitchers struck out four walking three and gave up six hits.

Ron Beattie was the only Falcon to collect more than one hit, he had two doubles in three times at bat.

## CFB FALCONS 7 - GIMLI VIKINGS 0

On Thursday night in Gimli it was a pitcher battle until the seventh inning when the Gimli pitcher Romeo Perrier tired in the heat and gave up three hits and a walk. Two of the hits, home runs by Doug Tucker and the Falcon pitcher Paul Chellew.

Until the fateful seventh both pitchers had put on a great display. Chellew only gave up two hits both of those to Gimli first basemen Rod Oberg in his only two times at bat. Chellew struck out five, walked two and did not allow a Viking past second base. He got some great fielding from all the Falcons but both Doug Gagnon at third base and Rick Buchanan in left field made some outstanding plays.

Perrier struck out five, walking four and gave up seven hits. In the first inning he did not allow a hit but the Falcons scored one run on a walk to Tappy and some sloppy fielding by the Vikings. The airmen scored again in the second on a three base hit by Springsted and a sacrifice fly by Doug Gagnon.

The Falcons added one more in the fourth and four in the seventh.

### THE TOP FIVE BATTERS

Buchanan	420
Tucker	403
Boran	384
Graham	345
Gagnon	333

# Do you know baseball

L. J. Burns

Top half of the fifth inning, score 0 - 0, the first batter hits a long fly ball to deep right centre field. The right fielder races back to the fence, the ball hits the fence and rebounds so suddenly that the fielder loses track of it for a second, and it bounces off his forehead and into the stands. The umpire waves a home run but the home team protest. They claim that the hit was not a home run as it failed to clear the fence "clean". The umpire however points out that a ball which bounds off the fielders glove and goes into the stands is a home run and the same rule should apply to this situation.

Quest: If you were the umpire, how would you rule?

Ans: This is not a home run. When the ball rebounds from the fence, it became a bounding ball which allows only two bases for such a hit.

Top half of the third inning, home team leads 2-0, batter raps a double down the left field line. The next batter walks. The next batter lifts a long fly to left field. The outfielder makes the catch but runs into the fence and crumples to the ground dropping the ball. The third base umpire rules a fair catch. The plate umpire calls time at the catchers request, before the outfielder can recover and throw the ball, the runner on second scores and the runner on first goes to third. But the plate umpire, having called time, sends them back to their original bases. After a violent argument, the game continues under protest, the home team wins 6-3.

Quest: If you were the league president, how would you rule?

Ans: You must rule in favour of the visiting team. First, the fielder did not make a fair catch as described in rule (2:00 Catch). Second, "Time" may not be called while the ball is in play notwithstanding the fielders mishap.

# CRONSHAW'S JEWELRY ENGRAVING

( One Day Service )

WATCH REPAIRS  
JEWELRY REPAIRS

642-5039

# Saving money on food?

- ✓ CHECK OUR WEEKLY SPECIALS!
- ✓ CHECK OUR REGULAR PRICES!
- ✓ CHECK OUR MEAT BARGAINS!

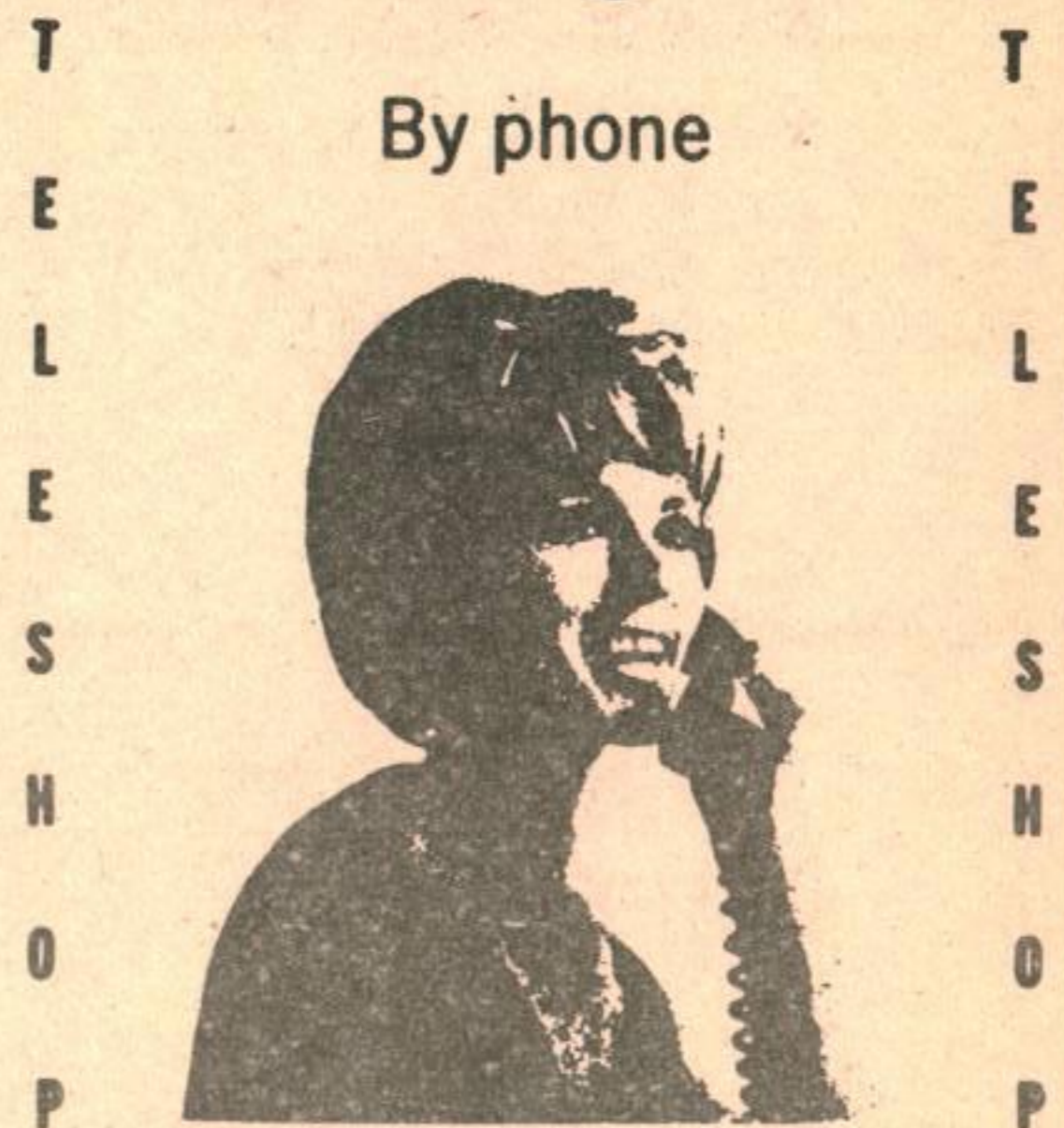
Stock up on frozen foods and meats at reduced prices.

# TIP TOP CLOVER FARM

PHONE US AT 642-5418

# How to shop from Simpsons-Sears Catalogues

By phone



GIMLI  
SIMPSON-SEARS CATALOGUE

ORDER OFFICE

642-5161

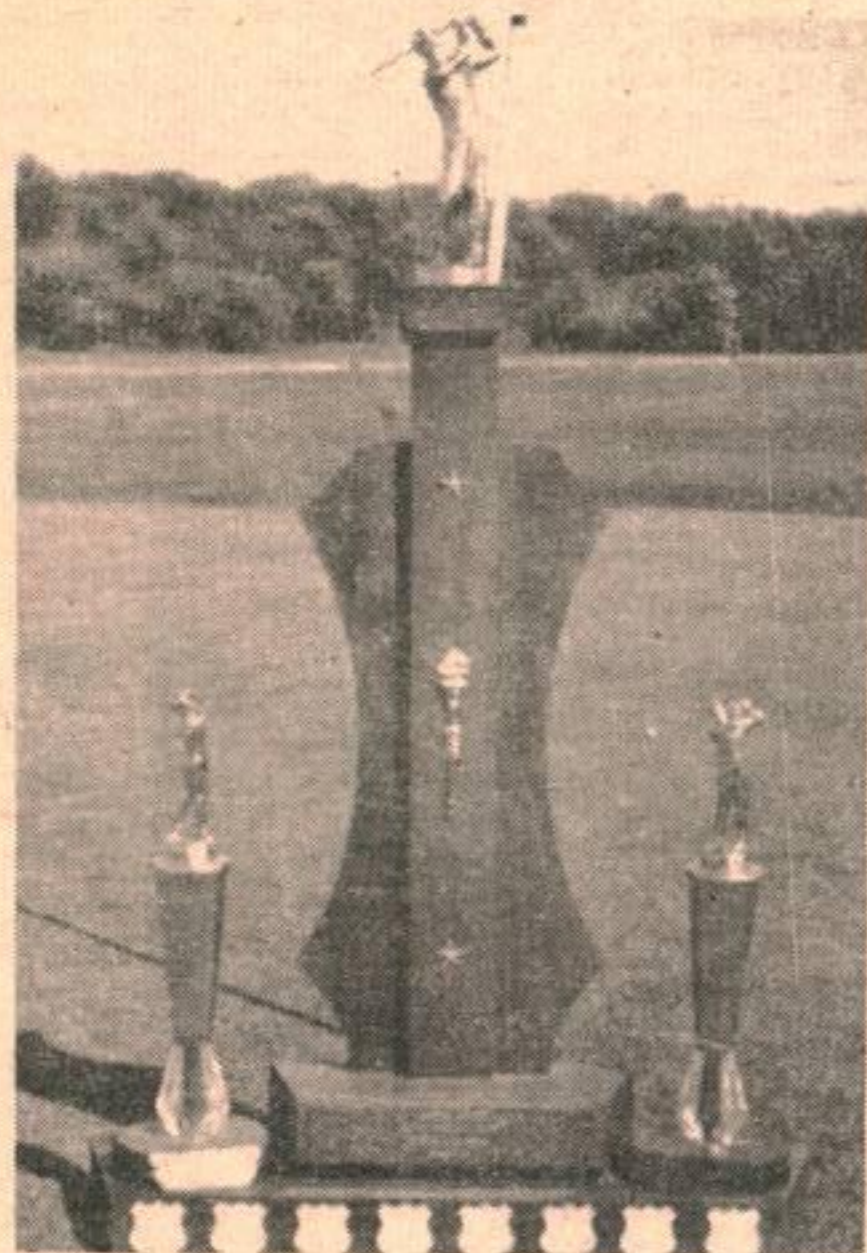


# THE 10th HOLE

Aspen Park Golf Club

Following is a pictorial analysis of the Golf Tournament covered in last week's FRAMFARI.

Beginning 31 August Ladies Day begins at 1:00 p.m. Tee-off time from 1:00 to 1:30 p.m. There will be no Ladies Day on Labor Day weekend.



Labatts Trophy



Pete Landiak presents Sandy Herrick with the "Labatts Trophy".



Bud Wilds and Hugh Kumpula seem to be enjoying an incident in their game - Hugh is seen here receiving his trophy for second low gross with a fine 68.



"A" Flight low gross goes to Yvon Sorrel. Bud Wilds presents Yvon with the "Gimli Hotel Trophy" for his 38-36-74.



Andy Anderson pictured above receiving his trophy for low gross in "B" Flight had a disastrous front nine of 41, however, Andy was able to bring his game under control and carded a four over par 34 on the back nine for the win.



"C" Flight low gross winner Doug Tucker is presented his trophy by Bud Wilds, tournament chairman. Doug paced steady rounds of 44-40 for a 85.

For GOOD Food, and  
Good Service  
VISIT THE

**Lake Inn** RESTAURANT

**TIRED OF COOKING??**

WHY NOT TRY OUR  
NEW TAKE-OUT SERVICE

Next to Gimli Tailor, Gimli

**JOE NAMATH**  
**IS WORKING**  
**IN OUR SPORTS**  
**DEPT!**

**CO-OP**  
**INSURANCE**

AUTO - FIRE - MOTORCYCLE  
3, 6 & 12 Month Policies  
Issued Immediately  
INSURANCE AT COST  
PLUS EXTRA BENEFITS

ALL military personnel  
insurable

Agent: J.B. Heidinger  
85 5th Ave.  
642-8347

**MANITOBA BASES - GOLF TOURNAMENT**  
Is To Be Held - 19 and 20 September

At Wasagaming Golf Course, Riding Mountain National Park, Clear Lake.

The tournament is open to all serving personell and permanent DND civilians in Manitoba.

Green fees \$8.00, entry fee \$1.00. Civilian guests \$11.50. Prizes to be presented.

For more information, contact Base Recreation Centre staff at Loc.52r2.

**SCUBA CLUB**

There will be a general meeting of the Gimli Cormosants Skin and Scuba Club at 1930 hours 27 August 1970, in the Club Room. All members shall attend.

*PLEASE PATRONIZE  
OUR  
ADVERTIZERS*

**Forces golf meet planned**

TRENTON, Ont. (CFP) -- Forces golfers take to the links here Sept. 4 in the servicemen's second annual classic.

Nine, eight-man teams from Canadian bases and Europe will compete in the two-day meet, with the seven best scores counting towards the team title. Forces 1969 Champions are the zone four entry from Eastern Ontario area. The competition will be 36 holes of medal play with an individual championship and zone title at stake. There will be no handicapping -- it is a "play from scratch" meet.

Forces individual champion, CFHQ's Maj. Don Cordukes, one of the best amateur divot men to come out of the Ottawa area, will likely be on deck to defend his title.

Service golfers who have played this course say it is a tough one. Some of the back nine tees, they add, should make the game interesting for visiting players.

**RED CROSS  
AQUATIC SCHOOL**

The Leadership Training Center at Gimli, under a peaceful facade, is actually a beehive of activity. At present, the Red Cross Aquatic School is occupying the Camp with 37 candidates from throughout Manitoba taking the Leadersnip course. Included are 7 persons from CFB Gimli, 3 from CFB Shilo, and 1 from CFB Winnipeg.

The School, under the direction of Cam King, has a staff of five, with three of them from Base Gimli: Myrna King, Buzz Lamb, Cpl Norm Pas-sant, Cpl Jim Sesak, and Cpl Bill Springstead.

The course this year is running from Aug 14-21 and includes training in teaching, water safety, artificial respiration, rescue and organization, and administration of water safety programs. To indicate the wide range of topics, one subject deals with one's ability to deliver impromptu talks while another is entitled "The Life Guard and The Law".

The candidates, on top of absorbing an intensive classroom program, are encouraged to become and remain physically capable of performing the skills learned.

**ASPEN PARK GOLF CLUB**

**HIS N HERS MIXED 2 P... Aug. 16**

Prizes - Good

**CANCELLED**

CUT OFF FOR ENTRIES - 12 AUG. WE WILL HAVE TO CANCELL THIS TOURNAMENT IF INSUFFICIENT ENTRIES ARE RECEIVED.

**JUNIORS WINDUP TOURNAMENT Aug. 26**

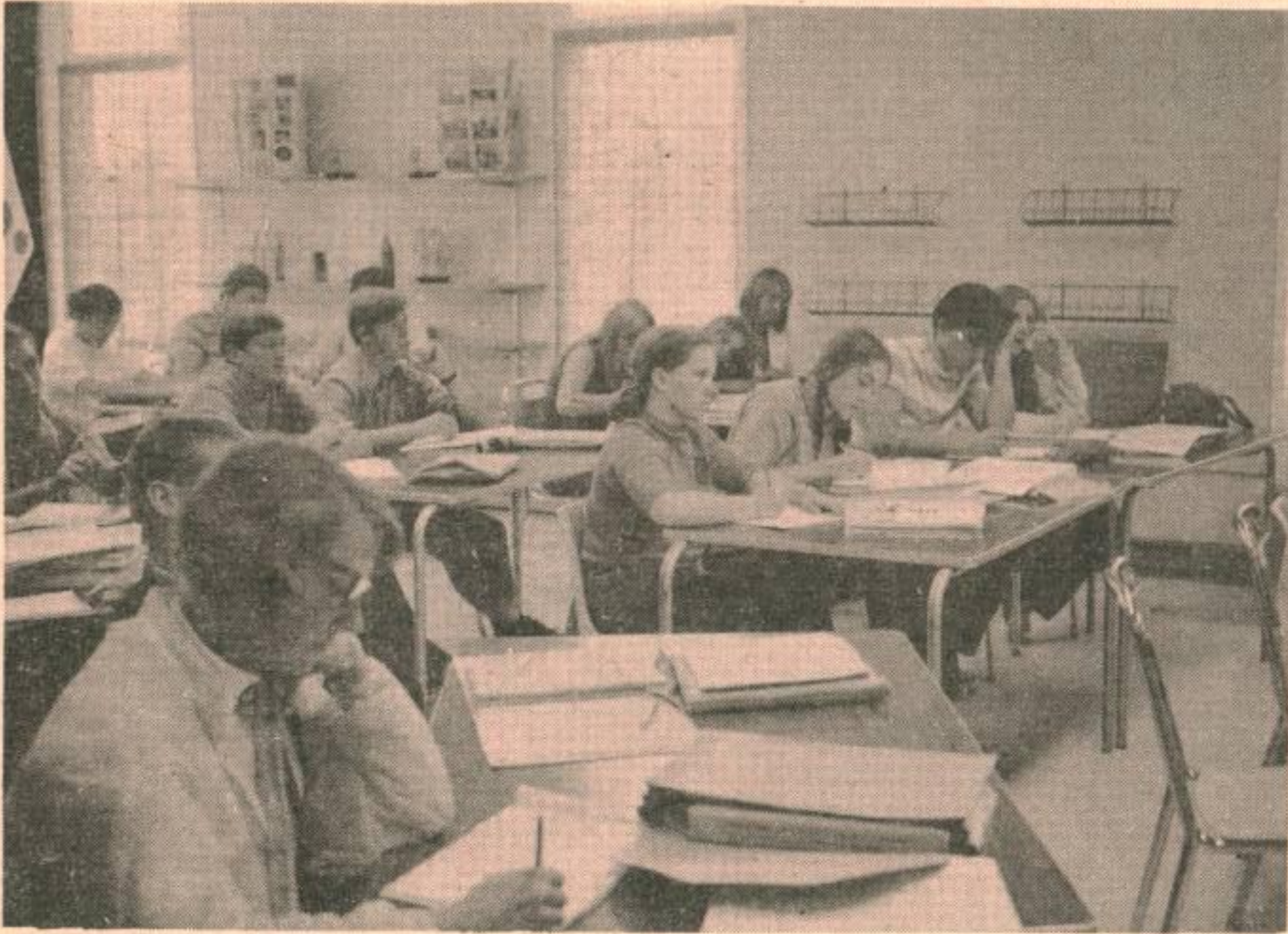
Prizes - Good Time

**LAST CHANCE CLUB TOURNAMENT Sept. 19**

Men's - Ladies - Junior's Flights

Open to all Club members.

Registration book in Pro Shop for the Early Birds. Phone 642-5151 LI5IR2.



Part of the class of 37 are shown recording Bill Springstead's words on 'The Life Guard and The Law'



Discussions between classes invariably deal with the recent lecture



A portion of the staff clowning during a break. L to R: Bill Springstead, Norm Passant, ResusciAnnie, Jim Sesak, and Cam King, School Director



Norm Passant demonstrates the proper technique for artificial resuscitation

**GIMLI HOTEL**  
**(The Whitehouse)**  
 OVERNIGHT ACCOMODATION  
 REASONABLE RATES

---

ENTERTAINMENT  
 WED TO SAT

**GIMLI DRIVE INN**  
 NOW OPEN  
 TO SERVE YOU THIS SUMMER  
 TRY OUR -Chili  
 -Tubby Chicken  
 - Hot Dogs & Nips  
 -Deep Fried Perogies

642-8355 FOR PICK-UP ORDERS

# Movement Classes for Withdrawn Children

TORONTO (CP) -- While most other schools throughout Metropolitan Toronto have settled down into the long summer silence--the Flemington public school is hopping.

The school is the scene of a volunteer summer course in perception designed to aid some of the withdrawn children in reading.

The approach is a long way from the old-style primer.

Principal James Montgomerie believes that the way to the three Rs is through the five senses and sight, hearing, smelling, tasting and feeling play an important role in the teaching methods.

The 200 children in the course were selected because they were more withdrawn than their classmates in Kindergarten, Grade 1 or Grade 2, or have some special language or emotional problem.

"These children just sit in the shadows and they get the crumbs from the teachers all year," says teacher Eileen Stephenson. But now the more assertive children aren't around and the shy ones have their day, with 10 teachers and 20 teacher-aides to help draw them out.

The summer course is based on learning theories developed by Purdue University psychologist N.C. Kephart, and tested by York University psychologist Harold A. Mindren.

According to the theory, slow learners are often perceptually handicapped, and their learning performance can be improved by exercises that make them more aware of spatial relations of the body; right hand, left hand, upper and lower parts, balance and co-ordinated movement.

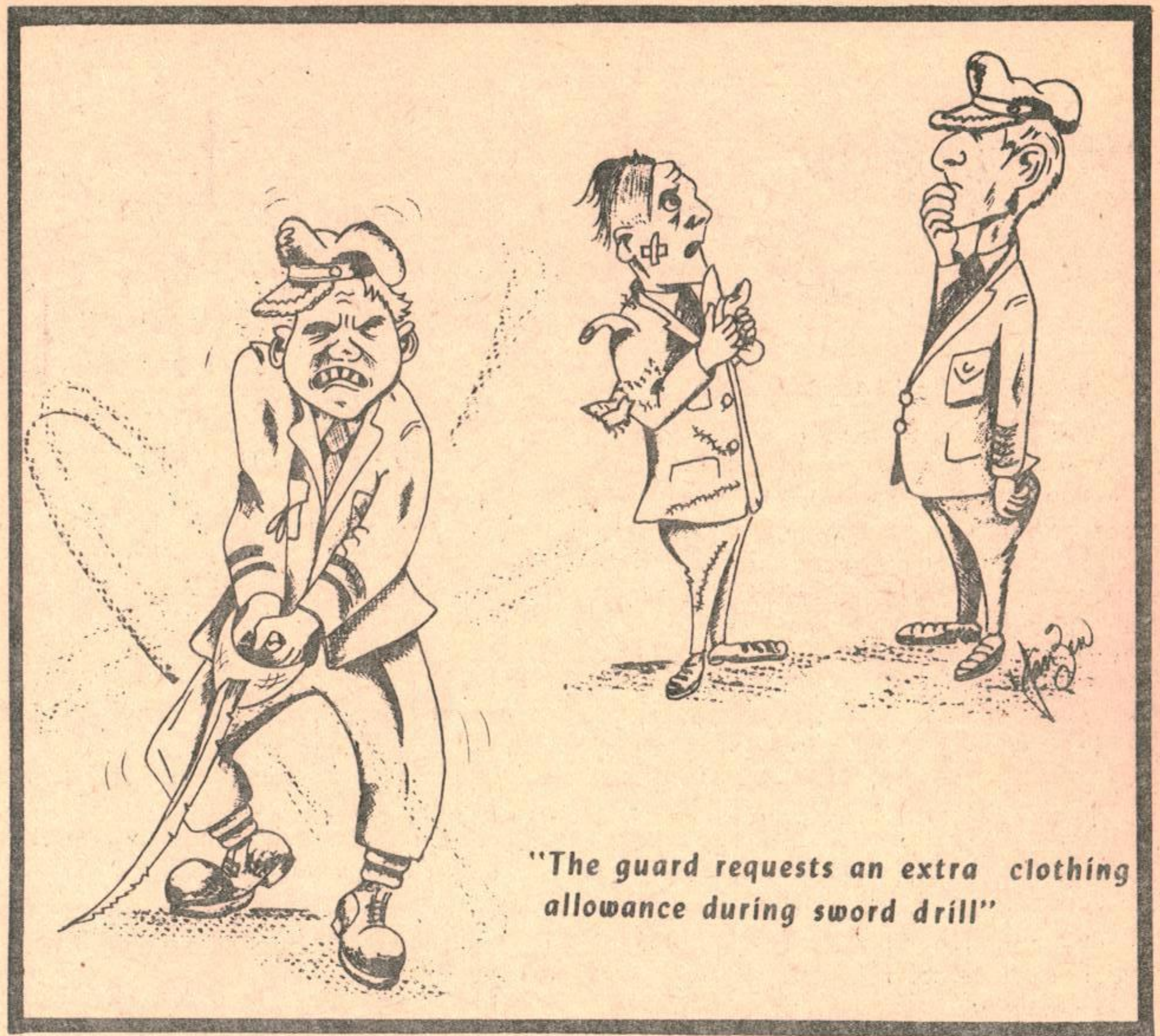
And so the classes are all movement.

Tom Crothers, director of Seneca College Children's Theatre, works at the school and is an expert at drawing out the retiring children.

In the school auditorium he puts the children through creative drama sessions.

"The child bridges his world through fantasy," said Mr. Crothers.

The Winnipeg Tribune, Wednesday, August 5, 1970.



## WE'RE LOOKING FOR AN IDEAL COMPETITOR...

(BUT REALLY,  
ALL WE WANT  
IS EVERYONE FROM  
THE TOWN &



C.F.B. GIMLI

THE BASE TO  
COME ON OUT  
AND PARTICIPATE!

## SUMMER CARNIVAL

### SATURDAY, AUGUST 29

- \* NOVELTY NITE & DANCE
- \* (eighteen and over )
- \* 8pm AT REC CENTRE
- \* FREE ADMISSION

### SUNDAY, AUGUST 30

- \* CHILDRENS'S TRACK & FIELD -11am
- \* PONY LEAGUE BALL TOURNAMENT
- \* MIXED ADULT SOFTBALL, GOLF  
& WATER BASKETBALL
- \* TEEN DANCE \* BEER TENT
- \* RIFLE SHOOTING AND
- \* MODEL AIRCRAFT DISPLAY ALL DAY
- \* REFRESHMENT BOOTHS BY VENTURE SCOUTS

(see FRAMFARI 28 Aug for schedule)

BLOOD-ALCOHOL CHART

**DO YOU KNOW  
YOUR LIMIT?**

INSTRUCTIONS IN USE OF CHART

There is no absolute rule that governs the effect of alcohol on the human body. Each individual reacts according to body weight, temperament and the amount of food present in the stomach. The scale on the opposite page shows the estimated percent of alcohol that will be present in the blood following the consumption of a given number of alcoholic drinks. The scale is also an indication of the extent to which your driving may be impaired by alcohol. To use the scale follow these directions carefully.

1. Count your drinks--the following drinks contain approximately equal amounts of alcohol:

- 12 oz beer
- 3 oz port or sherry
- 1 1/2 oz hard liquor(\*)
- 5 oz table wine or champagne
- 1 oz liqueur

DRINKS	1	2	3	4	5	6	7	8	9	10
100 lbs.	.043	.087	.130	.174	.217	.261	.304	.348	.391	.435
125 lbs.	.034	.069	.103	.139	.173	.209	.242	.278	.312	.346
150 lbs.	.029	.058	.087	.116	.145	.174	.203	.232	.261	.290
175 lbs.	.025	.050	.075	.100	.125	.150	.175	.200	.225	.250
200 lbs.	.022	.043	.065	.087	.108	.130	.152	.174	.195	.217
225 lbs.	.019	.039	.058	.078	.097	.117	.136	.156	.175	.195
250 lbs.	.017	.035	.052	.070	.087	.105	.122	.139	.156	.173

It is a Criminal offence to drive with blood-alcohol over .08, or refuse, without reasonable justification, to submit to a breath test.

- 1 ordinary cocktail  
(\*) whisky, gin, rum, vodka, etc.  
--- 80 proof.
  2. Under the number of drinks and opposite your body weight, find the percent of blood alcohol listed.
  3. Subtract from this figure the amount of alcohol used by your body for each hour elapsed since your first drink.
- Hours since first drink 1 2 3 4 5 6  
Subtract from blood alcohol level .015 .030 .045 .060 .075 .090

Example: 175 lb. person  
4 drinks in 3 hours = .100  
minus .060 = .040  
175 lb. person  
6 drinks in 4 hours = .150  
minus .090 = .060

**Kardy's HARDWARE**

Your FIRST STOP STORE for  
HOUSEWARE-GIFTWARE-PAINT

642-8838

**VIKING PHARMACY**

PHARMACISTS: Ernest Stefanson, Keith Eyolfson

PHONE 642-5504 Emergency 642-8359/642-5253 Use your GM charge card WE DELIVER

**PANTI HOSE**

REG \$1.49

SALE 79¢

**2nd DEBUT** 4 oz.

REG \$6.00

SALE \$4.99

**C-2's** 100's

REG \$1.39

SALE 99¢

**COLGATE 100** mouthwash

17 oz.

REG \$1.79

SALE \$1.39

**CURAD** ECONOMY SIZE

REG 98¢

SALE 66¢

**HEAD & SHOULDERS** SHAMPOO

REG \$1.85

SALE \$1.55

See your flyer for many more Back-To-School Specials!

# OUTSIDE WORLD

OTTAWA (CFP) -- According to an old saying "money makes the world go round". Salary must be an important consideration to every serviceman planning a move into the outside world. While we know exactly what our earnings are now some find it hard to project their worth into the civilian market.

Employers decide upon the salary range for a particular job, based upon the employment market and the responsibilities built into the position. Most employers are flexible within that range, however, and one

must be prepared to negotiate. This means presenting your qualifications and experience in such a way that acceptance is at the upper salary limit. This is your aim.

Remember, however, you are an unknown quantity to the employer. The fact one is willing to prove his worth could be more positive in the long run. Entry is the key and the possibility of a regular salary review is an important consideration.

Experience has shown that a lateral shift into civilian life from the military is a rare accomplishment and a serviceman earning \$9,000 now should think of \$6,000 as an entry salary. When too much empha-

sis is placed upon unrealistic starting salaries there is a danger that one is simply cut off from the employment market. Make allowance for the chance to prove how good you are.

Entry is even more important if it provides opportunities to show your worth. Don't price yourself out of the job market.

Servicemen approaching retirement are invited to participate in the Civilian Employment Assistance Programme as outlined in CFAO 56-20. Consult your Base Personnel Selection Officer or Base Personnel Education Officer for further details.

GM  
CHARGE CARDS

## TAYLOR PHARMACY

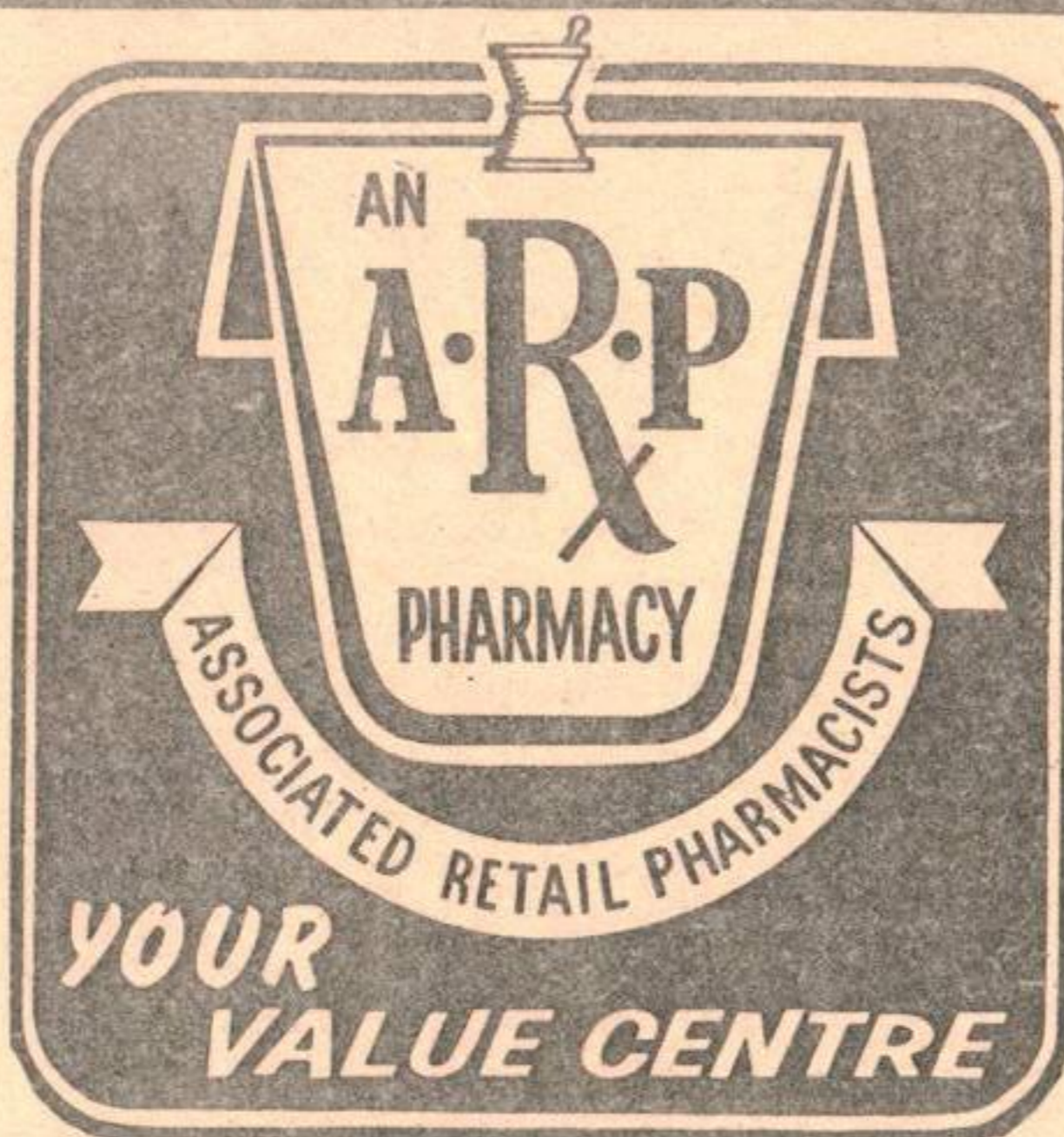
CENTRE  
AND  
SIXTH  
GIMLI

YOUR A. R. P. VALUE CENTRE



**PEAK FREAN BISCUITS**  
(Nice, digestive, shortcake)

REGULAR PRICE .37  
**SUPER SPECIAL 3/89**



AN  
**A.R.P.**  
PHARMACY

ASSOCIATED RETAIL PHARMACISTS

**YOUR VALUE CENTRE**



**KLEENEX TOWELS**  
2's  
A.R.P. SUPER SPECIAL  
**2/.59**



**NOXZEMA SKIN CREAM**

SPECIAL 6 oz. 50% more  
Sugg. retail 1.35  
**SPECIAL .99**



**SECRET AEROSOL DEODORANT**  
5 oz.  
Reg. price 1.49  
**SUPER SPECIAL .99**



**BAN ROLL ON** — 1.5 oz.  
Suggested retail 1.45  
**SPECIAL .99**

**BAN AEROSOL**  
5 oz. 40% More.  
Reg. price 1.39  
**SPECIAL 1.09**



**PANTI-HOSE**  
1st QUALITY  
Reg. price 1.49  
**SUPER SPECIAL .79**



**BAYER ASPIRIN**  
100's  
Reg. pr. .99  
**SPECIAL .69**



**SYLVANIA INCANDESCENT BULBS**  
40-60-100 watt  
A.R.P. SPEC.  
**2/.49**

**WE DELIVER**

SHOP AT THE A.R.P. VALUE CENTRE NEAREST TO YOU

SALE DATES: AUG. 19th to AUG. 26th

# Chapel News

## R.C. Chapel

OUR LADY OF LORETTO CHAPEL  
CFB GIMLI, ASPEN PARK, MAN

Major (Rev.) J. Georges Savoie  
B.A.;LPh.;BTh.  
Phone: 156

### MASSES

Sunday - 9:00 a.m. and  
11:15 a.m.  
Weekdays - 5:00 p.m.

### CONFESSIONS

Saturday - 4:00 p.m. - 5:00 p.m.  
Before each Mass and whenever  
you feel like it. We will try  
to accommodate everyone.

### BAPTISMS

By Appointment: Usually on  
Sunday

### MARRIAGES

1. Give two months notice to  
your Chaplain.
2. For a Mixed Marriage - four  
months notice would be pre-  
ferable since the Non-Cath-  
olic party needs to take a  
few instructions about the  
Catholic Faith.

## Protestant Chapel

Rev. D.W. Hilton  
Phone: 156r2

SUNDAY - 21 August 1970  
10:00 a.m. - DIVINE WORSHIP

### A REASONABLE FAITH

The conquest of despair is not unreasonable. Though the human intelligence cannot penetrate as far as the mysteries revealed by Christian faith, it can recognize that believing is a proper way of knowing the great realities. Further, the way to faith is not such, that our intelligence is forced to keep silent all the time. Faith and reason are related to each.

As regards the relationship of faith and science, many false problems have been raised because of false notions of what was faith and what was scientifically proved. Revelation has no teaching to give on the course of the stars, the evolution of the world or such matters. Science has no teaching to give on the deepest reality of our life or the ultimate origin of the world. Since faith and science deal with, the same reality, conflicts are always possible. But the conflicts are only apparent, since there is but one truth.

In the fields where science has a really serious contribution to make, it always has the priority in such cases of conflict -- in the measure of certainly which is appropriate to science, which is often that of the hypothesis. If believers have thought differently up till then, it was because conclusions has been drawn from revelation which should not have been drawn. The story of creation, which is a poetic description of the origin of mankind, did in fact give rise to the opinion that evolution was to be excluded. But this was not part of the divine message contained in the story. So two opinions were often formed about the literal meaning of the Old and New Testament which seemed obvious enough, but did not belong to the divine message.

Is faith surer than science? It has a certainty of a different sort. It may be affirmed that the assent of faith is attached to the most profound of our faculties. This makes its certainty the most profound and the strongest that we know upon earth. But at the same time it is the certainty of dedication, of love, of love towards God, who is only known in this act of dedication. Thus, we are not, so to speak, entirely on our native soil. And hence the certainty of faith is essentially accompanied by difficulties or "doubt".

### GRACE BAPTIST CHURCH, GIMLI

Rev. D.B. Adkins, Pastor for four years at Grace Baptist Church, Gimli, has accepted a position on the staff at Prairie Bible Institute, Three Hills, Alberta.

While awaiting a replacement the congregation will be served by supply speakers from the Canadian Sunday School Mission.

Sunday, August 9 was a "going-away" Sunday at the Church. Gimli souvenir plates were presented to three families who are leaving Gimli for other parts of Canada: WO Henry Wagstaff, wife Jackie and their children Paul, Patricia and David to Edmonton, Alberta; Sgt. Glynn Chambers, wife Clarice and children David, Blair, Royce and Erling Scott born August 12 to Kingston, Ontario; Pastor D. Adkins, wife Julia and children David, Daniel and Ruth to Three Hills, Alberta.

On Tuesday August 11 a gift of money was given to Mrs. Hazel Stephens from her friends at Grace Baptist Church. She, along with her children, Douglas and Sandra left August 12 for Saint John, N.B. in company with her sister and brother-in-law, Mr. and Mrs. M. Renton and their son Bruce.



NO  
HIDDEN  
CHARGES



NO  
PENALTIES

- ATTRACTIVE SAVINGS PLANS  
(Doubled in event of Death)
- TERM DEPOSIT CERTIFICATES  
(no penalty for premature withdrawal)
- FREE CHEQUING FACILITIES
- CHARTER FLIGHTS
- LOW COST LOANS
- INTERNATIONAL CREDIT CARDS  
(including Travellers Cheques)
- RETURN OF PROFIT TO MEMBERS

**ASTRA CREDIT UNION**



## Selkirk Funeral Chapel

\*\* serving the Interlake Area  
with dedicated service  
\*\* 24-hour Ambulance service

Phone 482-6284  
Res. 482-5419

209 DUFFERIN AVE.  
GARTH CLARY, DIRECTOR SELKIRK, MANITOBA



THE  
*falcon lounge*  
OF FIRST AVENUE  
GIMLI, MAN.

# The MART

## HOUSES

For Sale: 4-bedroom home, 129-4th Ave., Gimli. Phone-Danny 642-5286.

For Rent: 2-bedroom furnished suite (duplex) in Gimli - good location. Available Sept. 1. For information Phone: 642-5326.

For Rent: Modern 3-bedroom home. Completely furnished, reasonable rent. 5-2nd Ave. Phone: 642-5015.

## AUTOMOBILES

For Sale: 1965 Ford Country Squire-Wagon. Power Brakes, steering automatic. Can be seen at 60-6 Ave. or Phone: 642-8259.

For Sale: 1969 red Pontiac G.T.O., P.S., P.B., Tilt steering, A.T., console etc. Immaculate condition. Want \$36000. Phone. 642-5455 or see at 25-7th Ave., Gimli.

For Sale: 1960 Studebaker, 6 cyl. 35,000 mi. \$125. Phone: Local 179.

For Sale: 1966 Ford Galaxy 500. 2 DR Ht, 300 Cl, 3 speed auto, radio, WW, trailer hitch. Phone: Laurie - 642-5151 Local 139 or 642-5551.

For Sale: 1969 Corvette. 350/350 HP. Positraction, transistorized ignition, 4 spd. trans., tinted glass, AM/FM radio. Asking \$5,000. (will bargain) Phone: 642-5437 or Loc.120.

For Sale: 1961 Simca very economical car to run. Phone: 5840 or 164.

## THE MART--CONT

### MISCELLANEOUS

For Sale: 12' plywood boat, like new, \$40. Phone 642-5467 evenings only.

For Sale: Elgin Outboard motor, 18 hp. Very good shape - reasonable offer. Phone: 642-5840 or Loc. 164

For Sale: Polaroid land camera, nearly new. Best offer. Phone: J. Chic at 642-5151, Local 43.

For Sale: Parker-Nale Rifle 30.08; Winchester 1400 Auto Shotgun, 12 gauge, Vent Rib; Car radio Reverbator, Echo-Mate II; two-15" Ford Rims for wide tires. Phone: 642-7425.

For Sale: Frigidaire super mobile dish washer. Good working condition, \$50.00. Phone: 642-5283.

For Sale: Long hair piece, Human hair - jet black. Phone: 642-5852.

FOUND: Ladies diamond engagement ring in Junior Ranks Mess. At Guard House. Identify it and you can have it.

Will do ironing at my home PMQ 33. Phone: 642-8888.

EVERGREEN-NURSERY SCHOOL - commencing early September, three mornings/week. For information phone Sue Potter at 642-5882.

STRETCH AND SEW SEWERS - I am now stocked with patterns, books, elastic, ribbing and cotton knit fabrics for your fall sewing. Phone: 642-8135 Anne McCloskey. Watch Framfari for dates for fall----- STRETCH AND SEW CLASSES.

## Announcements

### REGISTRATION DEADLINE DATES FOR UNIVERSITY COURSE 1970-1971

University of Winnipeg - Evening Session. Courses.

Application must be submitted by 31 August. Registration in person for eligible students, Riddell Hall Gymnasium, September 15 - 18, 9:00 a.m. to 7:00 p.m.

University of Winnipeg - Admission of Mature Students.

Applications must be in the Registrar's Office by 31 August.

University of Manitoba - Evening Session Courses.

Application must be submitted by 28 August. Registration in person for eligible students September 16 to 17.

1970-1971 Calendars are available in BITO office for perusing.

## Goulding News

ALL GOULDING GRADE XII SUPPLEMENTAL EXAMINATIONS WILL BE WRITTEN AT --- GIMLI COLLEGIATE IN ACCORDANCE WITH THE OFFICIAL TIMETABLE.

DANCES, BANQUETS, PARTIES, WEDDINGS



*Men of Note  
Orchestra*

*Jim Glover,*

Gimli - 642-8167 or Loc 143

## Shop and Save at WAYNE'S IGA

The Store That Cares

Groceries

Table Rite

Redbrand Steer

Beef & Table

Fresh Produce

CENTRE STREET GIMLI

NORTH AMERICAN  
LIFE ASSURANCE COMPANY  
A Canadian Mutual Company

*Providing programing,  
consulting and service*

FOR  
ALL TYPES OF INSURANCE

*Visiting Base Library,  
CFB Gimli, on Mondays.*

G.F. (Kelly) Laliberte

I. (IKE) Chamish

299 Kennedy St.  
Winnipeg, WH. 3-1526.

the  
store  
for people  
in love.



Bring in this ad when you are purchasing a star brite diamond and we will give you a \$10 gas allowance. We're nothing without your love.

**Ben Moss Jewellers**

Westwood Shopping Centre

'Mall Centre 477 Portage

NEW - Portage & Donald

IN WINNIPEG

# GIMLI HAPPENINGS

If your club or organization wishes to announce an upcoming event call or write B10, C.F.B. Gimli, Aspen Park, Manitoba or Phone 642-5151, Local 26.

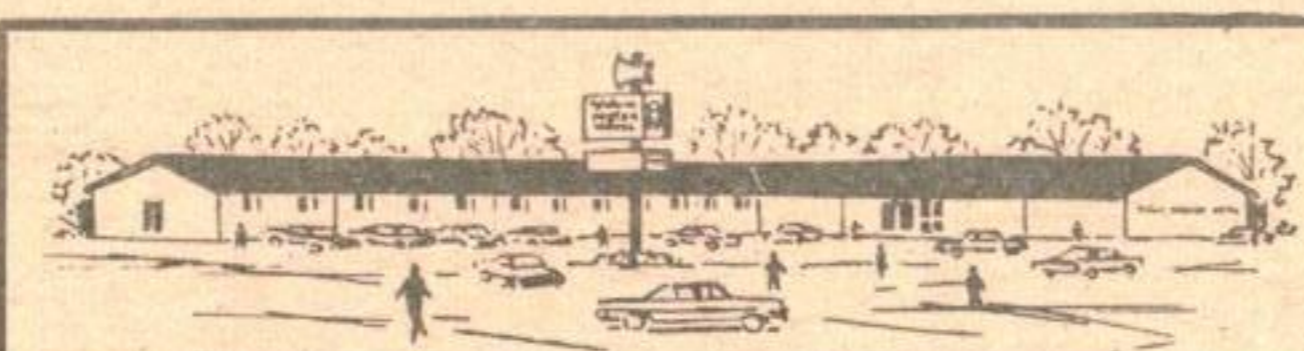
- Fri. 21 to 23 Aug. PRAIRIE OPEN C.F.B. Gimli.
- Sat. 22 Aug. HAYRIDE/BARN DANCE (BBQ) pm. Officers' Mess.
- Sat. 22 Aug. MIXED COUPLE GOLF pm. Jr. Ranks Mess C.F.B. Gimli.
- Sun. 23 Aug. CENTENNIAL 100 CARAVAN 1000 hrs. Gimli Park.
- Sat. & Sun. 22 & 23 Aug. PUBLIC SKATING 1400 hrs. Gimli Arena.
- Sat. & Sun. 22 & 23 Aug. HOCKEY-GIMLI WOLVES 1930 hrs. Gimli Arena
- Sun. 23 Aug. "FUN FAIR" 1400 hrs. Ladies Hospital Aux. Gimli Park.
- Sun. 23 Aug. MOVIE-"ROSEMARY'S BABY" 2000 hrs. Jr. Ranks Mess.
- Wed. 26 Aug. JUNIORS' TOURNAMENT pm. C.F.B. Gimli.
- Sat. 29 Aug. CREATIVE ARTS FESTIVAL p.m. Gimli Town.
- Sat. 29 Aug. DANCE-GREG-LEWIS ORCH. 2130hrs. ~~CANCELLED~~ Jr. Ranks Mess.
- Sat. 29 to 30 Aug. 2000 "SUMMER CARNIVAL" Free, Open hrs. Sat. & Sun. DANCE AND NOVELTY NIGHT 1100 Sun. FIELD DAY-C.F.B. Gimli.
- Sat. & Sun. 29 & 30 Aug. PUBLIC SKATING 1400 hrs. Gimli Arena.
- Sat. & Sun. 29 & 30 Aug. HOCKEY-GIMLI WOLVES vs. WINNIPEG TEAMS 1930 hrs. Gimli Arena.
- Sun. 30 Aug. MOVIE-"GUNS OF NAVERONE" 2000 hrs. Jr. Ranks Mess.
- Mon. 31 Aug. GOLF - LADIES DAY 1300 hrs. C.F.B. Gimli.
- Thu. 3 Sep. GRADUATION - 6904 1900 hrs. C.F.B. Gimli.
- Fri. 11 Sep. DUGALD FASHION REVIEW 2000 hrs. Base Theatre.
- Sat. 19 Sep. DANCE - CASUAL 2030 hrs. Officers' Mess
- Sat. 26 Sep. FALL BALL 1930 hrs. "Blue Tones" Orchestra Sergeants' Mess
- Sat. 26-27 September CENTENNIAL AIR SHOW St. Andrew's Field.

## Starlite Theatre

### Pinocchio in Outer Space

Tuesday August 25 General 85 minutes 1:30 p.m.

Thursday August 27 Adult 8:00 p.m.



**Viking Motor Hotel** LTD  
PHONE 642-5181 P.O. BOX 131

- 21 Units -
- Air Conditioned -
- Cocktail Lounge -
- Sauna Baths -
- Dining Room -
- Banquet Facilities -
- Beverage Room -

Exotic Dancer Monday & Tuesday  
**Smorgasbord Sun**  
BAND Wed, Thr, Fri, & Sat.

Party Ice For Sale

Phone for reservations

Cor. Hwy. No. 9 and Centre St.

GIMLI Manitoba Canada

## THE FRAMFARI X-WORD

T H G I E W L E E R T H T E N  
C T H K C O D E E D F L O A T  
A A C S K R E N L N K B M R U  
S O T T O M R I U O E R H E O  
T B A E O S I L R P E C I K R  
I W C L H G W O E H R R R N T  
N I H E B A I T S E C A O I R  
G N T Y X O B I P N E B T S E  
S D P E C A F R U S S P O R T  
S P E E D T E S M T H E M A A  
R O D N E T T E G H P I K E W  
E S P M A C L I O G N U F A T  
V T A W W T A L F I S H A Y L  
I N O M L A S F E F I N K E A  
R O H C N A C O D M A E R T S

Listed below are the words that you will find hidden in the puzzle above. These words are spelled out in all directions - so look very carefully. By assembling the letters that remain, in order, you will find today's hidden words which will be published next week. This week's hidden words have 22 letters.  
LAST WEEK'S ANSWER: It's Summer Vacation.

### FISHING

- |           |            |
|-----------|------------|
| ANCHOR    | LURES      |
| BAIT      | MOTOR      |
| BOAT      | NET (2)    |
| BOX       | PERCH      |
| CAMPS     | PIKE       |
| CASTING   | POND       |
| CATCH     | REEL       |
| COD       | RIVER      |
| CRAB      | ROD        |
| CREEK     | SALMON     |
| DEPTH     | SALT WATER |
| DOCK      | SEA        |
| EYELETS   | SINKER     |
| FLIES     | SMELT      |
| FIGHT     | SPEED      |
| FISH      | SPORT      |
| FISHERMAN | STEAM      |
| FLOAT     | SURFACE    |
| FUN       | TROUT      |
| HOOK      | WATER      |
| KNIFE     | WEIGHT     |
|           | WIND       |
| LAKE      | WIRE       |
| LINE      | WORMS      |