



# Framfari

*dup*



VOLUME 1 NUMBER 28

C.F.B. GIMLI, ASPEN PARK, MANITOBA

FRIDAY AUGUST 14, 1970

## Second Arctic and Northern Jamboree



Her Majesty, Queen Elizabeth II, here shown with Major-General W.K. Carr, Commander, Training Command, opened the second annual Arctic and Northern Boy Scout Jamboree at Camp. Nanook on July 10, 1970. Major-General Carr was the camp chief. (For story see page 3.)

# SOUND OFF

T.A.J. Mahal, Cpl.  
Totem Times.

Dear Sir:

It was with amazement that I read your article, reprinted in our Base paper, the Framfari, surprised that an anti RCAF Memorial item would be printed in an Airforce magazine.

Recently I too, put my views down on paper and feeling that anything so controversial would be squashed from the "Top", planned to send my article to the Winnipeg Free Press. Now thanks to you, I shall answer the invitation offered in our Base newspaper. If it is not rejected as being too emotional, it will be my pleasure to forward a copy to you, and let us hope that two of us, with our varied views, will not be posted to outer Mongolia.

The coloured RCAF Memorial folders showing the fabulous beauty of this remarkable complex, and the story of its conception, are very impressive and it will undoubtedly be one of Canada's greatest achievements. Coventry Cathedral, also built as a memorial, will be almost insignificant by comparison.

All Airforce Servicemen have recently been asked to contribute money to this memorial as a Regular Pay Assignment.

As the wife of one of "The Lucky Ones, who survived the war and forty trips over Europe, this simply made my blood boil.

This fortunate man became an officer by stepping into the shoes of his dead buddies and returned to Canada at the age of 20 after three years of service. He found himself an untrained civilian. Only a veteran. Once out of uniform, he was a nothing.

He could, it is true, have obtained more schooling, but he had made an almost fatal mistake. He had married and had to support a wife. In those days, there was no such thing as the "paid" upgrading civilians can obtain today. He found manual labour at \$25.00 per week. Cities were filled to overflowing and the six dollar a week attic room was accepted with gratitude.

Then another problem arose, no room for a baby. No accommodation for couples with/or expecting a child.

Partly through ignorance, his own mistakes, and sheer bad luck, for which we blame no one, he eventually found himself and his family, some years later, in a northern town. It was January, 40 below zero, with debts mounting and family staying with friends. (How many of us are fortunate enough to have such friends). He tried desperately to find work. If he could shovel snow for a day, at least these people did not have to feed him.

There was a local Employment Office, where a well fed man with a comfortable office had a sole job. He was there to help veterans find work. Daily visits to him were futile.

It was a case of, "Sorry old man (by now our veteran was all of twenty-six) there just isn't anything. Now if you were one of the DP's (displaced persons) pouring into town from Europe, guaranteed jobs by the Canadian Government, then I could do the same for you, namely work in the gold mines."

In desperation, this veteran appealed for welfare or relief as it was then called. "Sorry you have not lived in this town long enough to qualify." I will leave it to the imagination. How would such a man feel. He was only a veteran. This man's wife, whose philosophy in life was (and still is) that every

new circumstance, regardless of whether it was pleasant or unpleasant, was eventually a new and rewarding experience, hated to see her husband in this position -- to live off friends who needed all they had for themselves -- to go to the local grocery store when the bill was already over a hundred dollars and to learn how charming a baliff can be as he hands you a summons for an unpaid bill when you thought he just wanted to shake hands.

Today we find ourselves in fairly comfortable position -- an Airforce job -- and some security. Some ex-servicemen are not so lucky.

I personally knew and loved many of the boys who later in the war, when they reached 17 or 18, became aircrew missing believed lost. Some of my sister's friends died in the Battle of Britain and she lost, besides these friends, two pilot fiancés.

These men (boys) would probably be proud to be remembered and included in the RCAF Memorial. One cannot speak for the dead or their families, yet I feel they would agree that such a huge sum of money should go to help the survivors, many of whom live in Canada today in abject poverty and poor health. I would gladly assign \$10.00 of our income monthly to assist these people, but would begrudge one single dollar towards this Memorial until every needy veteran is looked after first.

Each November 11. I remember the youthful shining faces of the boys we lost -- Peter -- Wally -- Steve and so on. They will live in my heart and in those of their families as long as we live. But first of all shouldn't we concern ourselves with the living and not the dead. I feel sure many of those boys would say -- "Look after the living first, the Memorials can come later."

The wife - of one of the  
"Lucky Ones"

FRAMFARI is published weekly for distribution on Friday. Opinions expressed are those of the writers and do not necessarily reflect Official Canadian Forces Policy. The Editor reserves the right to edit all copy and advertising to suit paper policy. All correspondence should be addressed to: Editor, Framfari

Aspen Park, Manitoba  
Phone: 642-5151 - L126R2

Deadline for all copy: 2:00 pm Monday

**PUBLISHER**

....Col. J.F. Dunlop  
Base Commander

**BUS. & PROD. MGR.**

....Maj. A.C. Platz -L57

**EDITOR**

....J.F. Bennett -L154

**SPORTS EDITOR**

....C. Potter -L37

**WOMEN'S EDITOR**

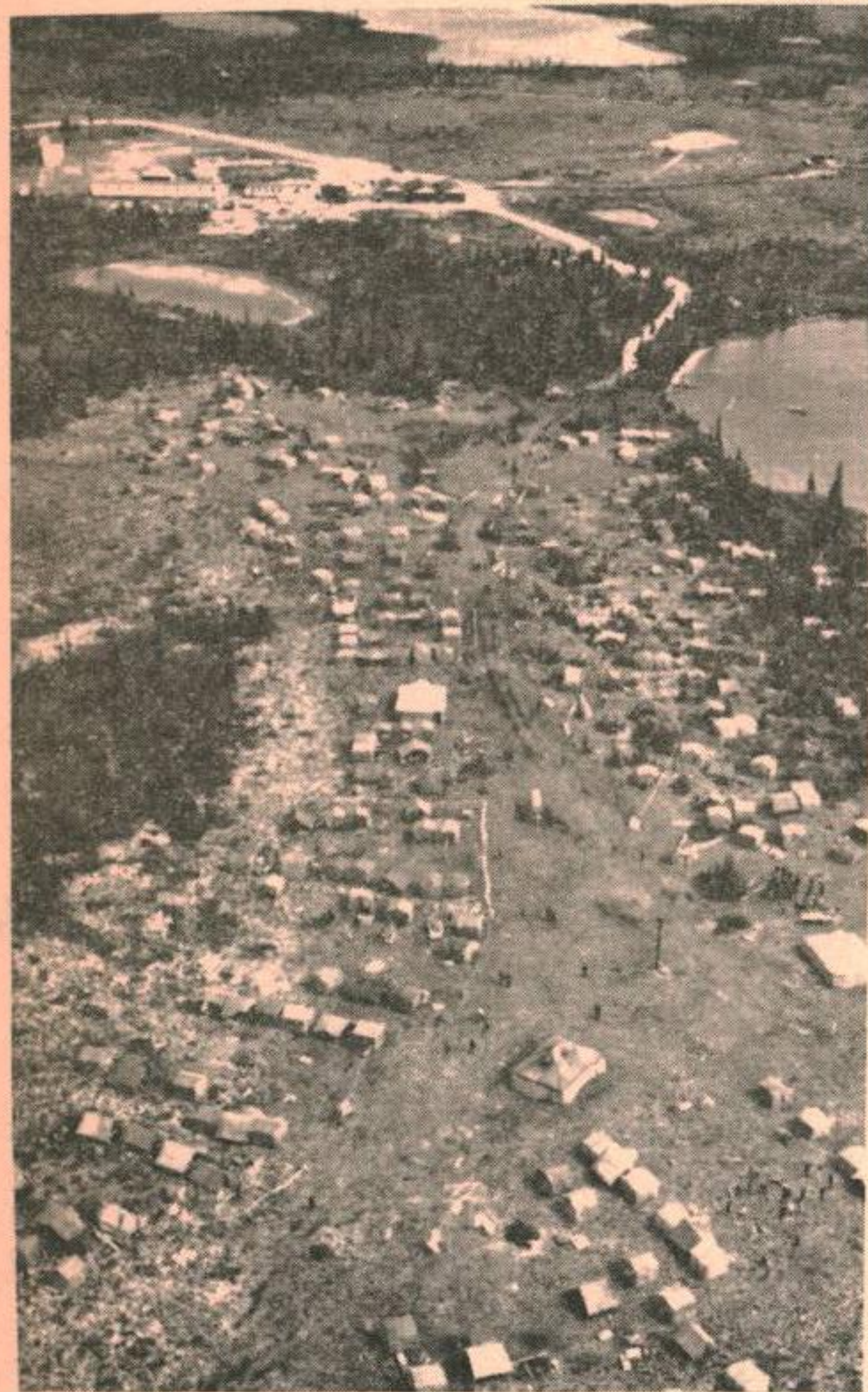
....Mrs. Betty Bennett -7964

**ADVERTISING MANAGER**

.... K.C. Birch -L 37

Tom and Karin Collins are pleased to announce the birth of their daughter  
TAMARA MARIE  
on the 18 of July, 1970

A Wagon (Air Flyte) almost new, is in the ditch at the corner of Maple and Spruce in PMQs. Its been there for almost a month.



The camp is located on the South-west shore of Hudson Bay at the edge of the tree line. Stunted trees grow on sparse soil atop the perma frost. The seasonal temperature is 65 to 75 degrees with nights of only 3-4 hours of darkness.

The camp chief was Major-General W.K. Carr of Training Command, Winnipeg. Her Majesty, Queen Elizabeth II, officially opened the Jamboree on Friday, July 10. Prince Philip, Prince Charles and Princess Anne were also present.

Meals were cooked in patrols over open fires. We enjoyed our first taste of arctic char as well as caribou.

Activities included talent shows, archery, rifle shooting, swimming, wide games, handicrafts, outdoor sports and campfires.

Tours were made to the Rocket Range, Museum of Eskimo and Indian Art, Indian and Eskimo villages and Fort Prince of Wales. This fort, built in the 1770's gives an excellent view of Hudson Bay.

As well as from Southern Canada, scouts were present from Greenland, Alaska, Baffin Island and other Northern areas. Many badges and crests were eagerly "swapped".

The purpose of the Jamboree was for boys of different cultures to associate and thus help to understand each other's way of life.

The crest of the Jamboree is also the Centennial crest of the North West Territories and shows three figures with hands linked symbolizing districts of Mackenzie, Keewatin, and Franklin. It also represents three races in the Arctic - Eskimo, Indian and whiteman.

On Friday, July 17 with the green and yellow toque and ice-blue neckerchief added to our uniform, we were back at the C.N. Station in Winnipeg.

We extend deep appreciation to Aspen Park Community Council as well as the Mother's Auxiliary for providing financial assistance to this highlight in our scouting years.

**SECOND ARTIC AND NORTHERN JAMBOREE**

(Ward Griffith and Gary Wilson of the First Gimli Norseman Troop attended the Second Arctic and Northern Jamboree at Churchill from July 8 to 16. The following is their account of the trip.)

On July 6 at the C.N.R. Station in Winnipeg, we assembled with the rest of our troop - the Second Manitoba, our scoutmaster was Dr. J.C. Menzies of Morden. Other scouts, venturers and leaders were present from all parts of Southern Canada. A special C.N.R. train with stops at The Pas and Thompson carried us to Fort Churchill. Buses were the means of travel to the site of the Jamboree -- Camp Nanook (Polar Bear).

**Kardy's HARDWARE**

Your FIRST STOP STORE for  
HOUSEWARE-GIFTWARE-PAINT

642-8838

**CO-OP INSURANCE**

We deal in AUTO, HOME  
FURNISHING and CASUALTY INSURANCE

Mrs. Rae Valgardson

GIMLI CREDIT UNION

10 am to 4pm

Phone 642-5028 or  
642-5878 after 5 pm

**CFB GIMLI  
AUTO CLUB**

TIRES

EXCELLENT SELECTION  
ON HAND.

W/W AND BLACK.

REASONABLE PRICES.

GOOD LINE OF ACCESSORIES

**K&W RENTALS**

(McLEODS STORE)

**WE RENT**

- FURNITURE
- CAMP TRAILERS
- LADDERS
- WHEEL BARROWS
- APPLIANCES
- ELECTRIC DRILLS
- SANDERS
- ETC. -

For GOOD Food, and  
Good Service  
VISIT THE

*Lake Inn* RESTAURANT

**TIRED OF COOKING??**

WHY NOT TRY OUR  
NEW TAKE-OUT SERVICE

Next to Gimli Tailor, Gimli



**Selkirk  
Funeral  
Chapel**

\*\* serving the Interlake Area  
with dedicated service  
\*\* 24-hour Ambulance service

Phone 482-6284

Res. 482-5419

GARTH CLARY, DIRECTOR 209 DUFFERIN AVE.  
SELKIRK, MANITOBA

# Dugald Fashion Review

The Gimli Women's Institute are planning to bring the famous Dugald Fashion Revue to Gimli as a centennial event, with particular emphasis on entertaining the senior citizens who will enjoy seeing the fashions of by-gone days. The kind permission of Major Ron Holden on behalf of the Canadian Forces Base has been obtained to use the Station Theatre for this event, since it is the most suitably equipped building for this type of show. The two hour show which has drawn packed houses at many showings in Manitoba during the past ten or more years will come to Gimli on Friday, September 11 at 8:00 p.m. Tickets will be sold in advance or at the door.

The men may think this is a show only for women -- quite the contrary. Those men who have had the courage to attend the Dugald Fashion Revue have enjoyed it as much as the women. Authentic costumes, accomplished and attractive models, professional smoothness acquired through hundreds of showings, combine to make the show highly entertaining to everyone.

The Dugald Fashion Revue was organized in June 1953 by the Dugald Women's Institute to entertain other institutes. The original clothes were gathered from the attics of its members and others were cleverly made by the director Mrs. G.F. Van Slyck, whose love of old things and artistic ability are in large measure the reason for the ever increasing popularity of the show.

The Dugald show is now a separate group from the institute and they have appeared all over Manitoba being booked heavily in this centennial year. We hope to tell you more about this unusual event later and in the meantime do mark September 11 on your calendar to attend one of the high-lighted programs of centennial year in Gimli.

ETHEL HOWARD

## FINLEY TV

— Service —

26 6th Ave, Gimli      642-5386

*COMING TO  
GIMLI SOON !!!*

**MANITOBA  
CENTENNIAL CARAVAN**

23 August 1970  
10:00AM to 10:00PM

**Location: GIMLI ELEMENTARY  
SCHOOL GROUNDS**

**Admission: FREE**

(Watch for additional events  
for this day, plans are now  
being finalized)

**Copy Deadline**  
- 2pm  
**Mondays**

## VIKING PHARMACY

PHARMACISTS: Ernest Stefanson, Russ Keeler

PHONE 642-5504 Emergency 642-8359/642-5253 Use your GM charge card WE DELIVER

<p style="font-size: 1.2em; margin: 0;"><b>MACLEANS</b> Toothpaste</p> <p style="margin: 0;">REG \$1.29</p> <p style="font-size: 1.2em; margin: 0;"><b>SPECIAL 99¢</b></p>	<p style="font-size: 1.2em; margin: 0;"><b>CONRAD BANDAGES</b></p> <p style="margin: 0;">ECONOMY SIZE REG 98¢</p> <p style="font-size: 1.2em; margin: 0;"><b>SPECIAL 66¢</b></p>
<p style="font-size: 1.2em; margin: 0;"><b>SOFT &amp; DRI</b></p> <p style="margin: 0;">Deodorant</p> <p style="margin: 0;">REG \$1.89</p> <p style="font-size: 1.2em; margin: 0;"><b>SPECIAL \$1.29</b></p>	<p style="font-size: 1.2em; margin: 0;"><b>NEET</b> Cream or Lotion</p> <p style="margin: 0;">2 OZ. REG \$1.35</p> <p style="font-size: 1.2em; margin: 0;"><b>SALE \$1.09</b></p>
<p style="font-size: 1.2em; margin: 0;"><b>GILLETTE TECHMATIC</b></p> <p style="margin: 0;">Razor &amp; Cartridge 10's</p> <p style="margin: 0;">REG \$2.29</p> <p style="font-size: 1.2em; margin: 0;"><b>SPECIAL \$1.79</b></p>	<p style="font-size: 1.2em; margin: 0;"><b>BRYLCREAM</b> King</p> <p style="margin: 0;">REG \$1.29</p> <p style="font-size: 1.2em; margin: 0;"><b>SALE 99¢</b></p>
<p style="font-size: 1.2em; margin: 0;"><b>FLASH CUBES</b></p> <p style="margin: 0;">REG \$1.77</p> <p style="font-size: 1.2em; margin: 0;"><b>SPECIAL \$1.44</b></p>	<p style="font-size: 1.2em; margin: 0;"><b>FLASH CUBES</b></p> <p style="margin: 0;">REG \$1.77</p> <p style="font-size: 1.2em; margin: 0;"><b>SPECIAL \$1.44</b></p>

COME IN AND SEE OUR FULL SELECTION OF DANISH CLOGS

You'll love them!

# GORD'S SOLO STORE

74 FIRST AVENUE  
PHONE 642-5337  
GIMLI, MANITOBA  
GORDON GINGRICH — PROP.

## GRAND OPENING SPECIALS

Prices Effective  
Thurs. thru Wed., Aug. 13th to 19th  
We Reserve the Right  
to Limit Quantities

STORE HOURS  
OPEN 7 DAYS A WEEK  
9 A.M. TO 9 P.M.  
TO SERVE YOU BETTER

### Meats

With the Quality You Like

**SIDE BACON**  
Devon, Sliced, Vac. pack,  
1-lb. pkg. **69c**

**BOLOGNA**  
Maple Leaf,  
Piece or Sliced **lb 39c**

**SALAMI**  
Maple Leaf,  
Piece or Sliced **lb 59c**

**COOKED HAM**  
Maple Leaf,  
Sliced **lb \$1.09**

**COOKED MEATS**  
Maple Leaf, Vac. pac.  
Sliced, 6-oz. pkg. **4 FOR 99c**

### FROZEN FOODS

FOR SUMMERTIME MENUS

**MIXED VEGETABLES**  
Libby's,  
2-lb. pkgs. **ea 55c**

**COD FISHSTICKS**  
Highliner — Package of 8 **2 FOR 69c**

### GOOD PRODUCE

AT BUDGET PRICES

**COOKING ONIONS** 3 lbs **45c**

**TOMATOES** lb **19c**

**ORANGES**  
California Valencias **4 lbs 59c**

**Free DRAW**

- FIRST PRIZE — A BARBEQUE
- SECOND PRIZE — 8-PLACE SETTING OF DISHES
- PLUS—4 DRAWS FOR HUMPTY DUMPTY PLASTIC DOLLS

Draw to be made Saturday, August 29th at 9 p.m.  
Get your Free Entry Forms from Cashier  
when you make a purchase.

**Free**

- BALLOONS
- SUCKERS
- SILVERWOOD'S DIXIE CUPS

FOR THE CHILDREN WHEN ACCOMPANIED BY THEIR PARENTS.

**HUMPTY DUMPTY POTATO CHIPS**  
Four Varieties — 9-oz. Packages — Reg. 59c Each  
NOW — BUY ONE AT 59c AND GET ONE FREE

**MEADOW GOLD ICE CREAM**  
3-Pt. Crtn's — Asst'd Flavors — Reg. 89c Each  
Special **59c ea**

**CO-OP FIRST GRADE BUTTER**  
lb **65c**

**MAPLE LEAF PICNICS**  
Ready to Eat **lb 49c**

**LEAN GROUND BEEF**  
lb **65c** or  
3 lbs **\$1.89**

**POTATOES**  
REDS — 10-LB. BAGS  
**69c ea**

### Top Food Buys Here

**SUGAR** **\$1.15**  
Manitoba White 10 lb bag

**Tomato Juice** **2 FOR 79c**  
Libby's — 48-oz. tin

**Beans with Pork** **4 FOR 95c**  
Libby's — 14-oz. tins

**Spaghetti** **5 FOR \$1**  
And Tomato Sauce.  
Heinz — 14-oz. tins

**Allen's Drink** **3 FOR \$1**  
Grape, Pineapple Grapefruit,  
Orange, 48 fl. oz. tins

**Salmon** **2 FOR 79c**  
Arrow Brand — Pink,  
"B" Grade — 1/25

**Bathroom Tissue** **39c**  
Cashmere,  
Assorted, Package of 4

**Aylmer Soup** **8 FOR 89c**  
Aylmer Tomato or  
Vegetable, 10-oz. tins

**Orange Crystals** **2 FOR 45c**  
Tang, 3-oz. pkg.

**Instant Coffee** **ea \$1.99**  
Maxwell House, 10-oz. jar

**Relish** **3 FOR 89c**  
HAMBURG OR HOT DOG  
Bicks — 12-oz. jar

**Sardines** **4 FOR 49c**  
Brunswick, 1/48

**Paper Towels** **ea 49c**  
Scott, 5c off label,  
Pkg. of 2

**Baby Foods** **6 FOR 79c**  
Heinz



On Tuesday night ten air cadets received their "wings" at a ceremony held at the Viking Motor Hotel. In the back row from left to right - Cadets Edward Preston, Bruce Bennett, Robert Deniset, Roger Toews, Tom Young, Michael Ashley, Marcel Prefontaine. In the front row are (left to right) Cadet Walter Kampen, Capt. Dave O'Blenis, Lt.Col John Ayres, Cdt. Gordon Loney, Capt. Ed Laxdal, Cdt. Dan Parliament.

(CF PHOTOS)



TOP AIR CADET.....Cadet Warrant Officer Gordon Loney, right, of 1096 Betournax St. Winnipeg receives a flying bursary of \$50.00 at a graduation dinner in Gimli, Monday evening. The presentation is being made by Lieutenant Colonel John Ayres, Acting Base Commander at Canadian Forces Base Gimli. Cadet Loney pulled off top marks in flying and ground school and he and nine other Winnipeg Air Cadets successfully completed the approved D.O.T. Flying Course for Private Pilots' Licences at the Gimli Flying Club this summer.

## Here's How To Save On Taxes!

**Plus Increase Your Savings Program. DO YOU HAVE A COMPLETE PICTURE OF YOUR RETIREMENT BENEFITS AND REQUIREMENTS?**

Why not talk it over with the man who knows your financial needs and objectives from a serviceman's point of view. Let Investors make your savings grow faster and save you tax dollars too!

**VISITING BASE LIBRARY EVERY WED. AFTERNOON.**

**ERROL L. SMITH**  
Representative  
262 Wallasey St.  
WINNIPEG 12, MAN.  
Tel. 837-3460



*Investors*  
SYNDICATE LIMITED

## CENTRAL BAKERY

BAKED FRESH DAILY

*Sliced Bread*

*Seed Bread*  
**IRISH & RYE**

*Pan Bread*

**Homemade Breads, Buns, & Cakes**  
**Imported Chocolates & Cheeses**

HOT PIZZA TO GO - Baked to your order in 15 min.

**PLAN TO ATTEND.....**

GIMLI CENTENNIAL CELEBRATIONS COMMITTEE are to hold a  
GENERAL MEETING - Monday, 17 August 1970  
8:00PM GIMLI TOWN HALL

**TARGET STORE**

Complete Family  
Clothing

642-5246

Tues. to Thurs. 9am-6pm  
Friday 9am-7pm  
Saturday 9am-6pm

**IMPORTANT !!!**



We are proud

To Announce

Our Association With The

**NEW**

**Gamble's Canada 'Account Card'**

*A New System which is now in effect.*

*We invite you to visit us, shop and  
fill out a credit card application.*

**MACLEOD'S SHOPPING FAMILY**

**MARSHAL WELLS STORES**

GIMLI, MAN.

*Shop and Save at*

**WAYNE'S IGA**

*The Store That Cares*

*Groceries*

*Table Rite*

*Redbrand Steer*

*Beef & Table*

*Fresh Produce*

CENTRE STREET GIMLI



**ASTRA**

Your Financial Centre

**NO  
HIDDEN  
CHARGES**

**NO  
PENALTIES**

- **ATTRACTIVE SAVINGS PLANS**  
(Doubled in event of Death)
- **TERM DEPOSIT CERTIFICATES**  
(no penalty for premature withdrawal)
- **FREE CHEQUING FACILITIES**
- **CHARTER FLIGHTS**
- **LOW COST LOANS**
- **INTERNATIONAL CREDIT CARDS**  
(including Travellers Cheques)
- **RETURN OF PROFIT TO MEMBERS**

**ASTRA CREDIT UNION**



Sgts. and WOs Mess retirement presentations: left to right - Major Ennis, Sgt. Altvater (retiring), Capt. Griffiths, WO Matheson (retiring), WO Waggstaff (transferred) Capt. Ringland, Major Holden, MWO McMamee (retiring).

Sat.29 to "SUMMER CARNIVAL"  
 30 Aug. Free, Open  
 2000 Sat. DANCE AND NOVELTY NIGHT  
 1100 Sun. FIELD DAY - CFB GIMLI  
 Sun.30 Aug. MOVIE-"GUNS OF NAVERONE"  
 2000 hrs. Jr. Ranks Mess.  
 Thu. 3 Sep. GRADUATION - 6904  
 C.F.B. Gimli.  
 Sat.19 Sep. DANCE - CASUAL  
 Officers' Mess.  
 Sat.26 Sep. FALL BALL  
 "Blue Tones" Orchestra.  
 Sergeants Mess.  
 Sat.26-27 CENTENNIAL AIR SHOW  
 September St. Andrew's Field.

## FUN FAIR

Sunday Aug 23rd

2 p.m - 8 p.m

Park Pavilion

BAKE TABLE, BINGO,  
 GAMES, etc.

GIMLI HOSPITAL  
 AUXILIARY

## Saving money on food?

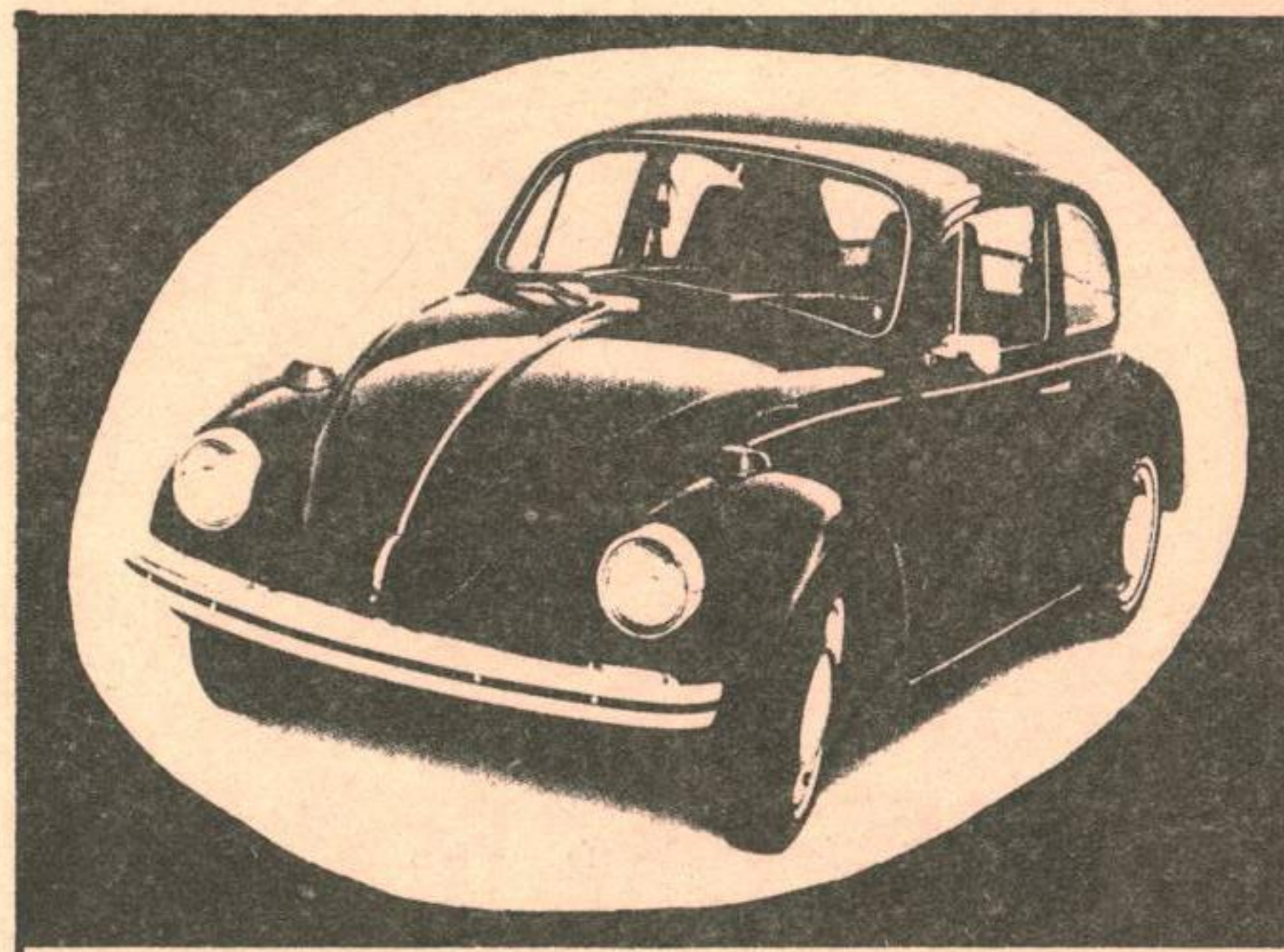
- ✓ CHECK OUR WEEKLY SPECIALS!
- ✓ CHECK OUR REGULAR PRICES!
- ✓ CHECK OUR MEAT BARGAINS!

Stock up on frozen foods and  
 meats at reduced prices.

# TIP TOP CLOVER FARM

PHONE US AT 642-5418

"OUR DAY IS NOW ONE  
 WEEK CLOSER"



**Don Robertshaw**  
 SALES REPRESENTATIVE  
 New & Used Cars  
 Trucks, buses, Campers  
**AUTO HAUS**  
 VOLKSWAGEN  
 276 Colony Ph 772-2401  
 WINNIPEG 1 MANITOBA

For information on NEW or USED VOLKSWAGENS,  
 or used cars (any make or model)

Call collect, write or contact personally:-

**DON ROBERTSHAW**



## RURAL DRIVING

Driving on a country road can be like exploring the unknown. If you are used to driving only on smooth, well charted highways, rural road hazards may prove a real challenge to your driving abilities. Even if you habitually use country roads, you may become overconfident and forget to watch for the unexpected.

There's only one way to drive on a country road; drive as if you were blazing a new trail. Drive slowly, watch out for hazards, and expect anything.

Here are some hazards to watch for:

### 1. Rough, Dusty Roads

- Slow down on gravel roads. Keep wheels in the well worn grooves. If you meet a car, reduce speed and pull over until it passes. Don't veer suddenly into loose gravel; you may skid.

- Fast driving on a gravel road can throw loose gravel up against your car, damaging the car finish or windshield and create a good deal of dust. During warm weather dust gathers on dirt roads and may obstruct vision. Slow down, keep to the right and turn your lights on low.
- If the dust is so thick you can't see, pull off the road as far as possible and stop. Turn your lights on and wait for the dust to settle.
- If you are travelling behind a car that kicks up dust, slow down until the car gets far enough ahead that forward vision is adequate. Never try to pass if dust obscures your vision.
- Country black top roads can be treacherous. Since black top isn't replaced often, it's more likely to find holes and bumps in the roads. Hit one of these at high speed and you may lose control of your vehicle.

- You may encounter loose gravel on black top, especially at curves. If you're travelling too fast you could slide off the road or into another car.
- If the road is wet, drive slowly. Long years of use "polish" road surfaces and makes them even more slippery when wet.

### 2. Unmarked Curves

On some rural roads you won't find signs marking dangerous curves. Therefore, keep to the right side of the road and be alert.

### 3. Hills

When you approach a hill, slow down, keep to the right and sound your horn. This will warn anyone who may be approaching of your presence.

### 4. Provincial/County Lines

Road surfaces may change abruptly as you pass between provinces/counties/townships. Each keeps up its roads according to its inclination and budget. Consequently you may suddenly change from a smooth road to a rough one.

# EATONS

CATALOGUE SALES OFFICE

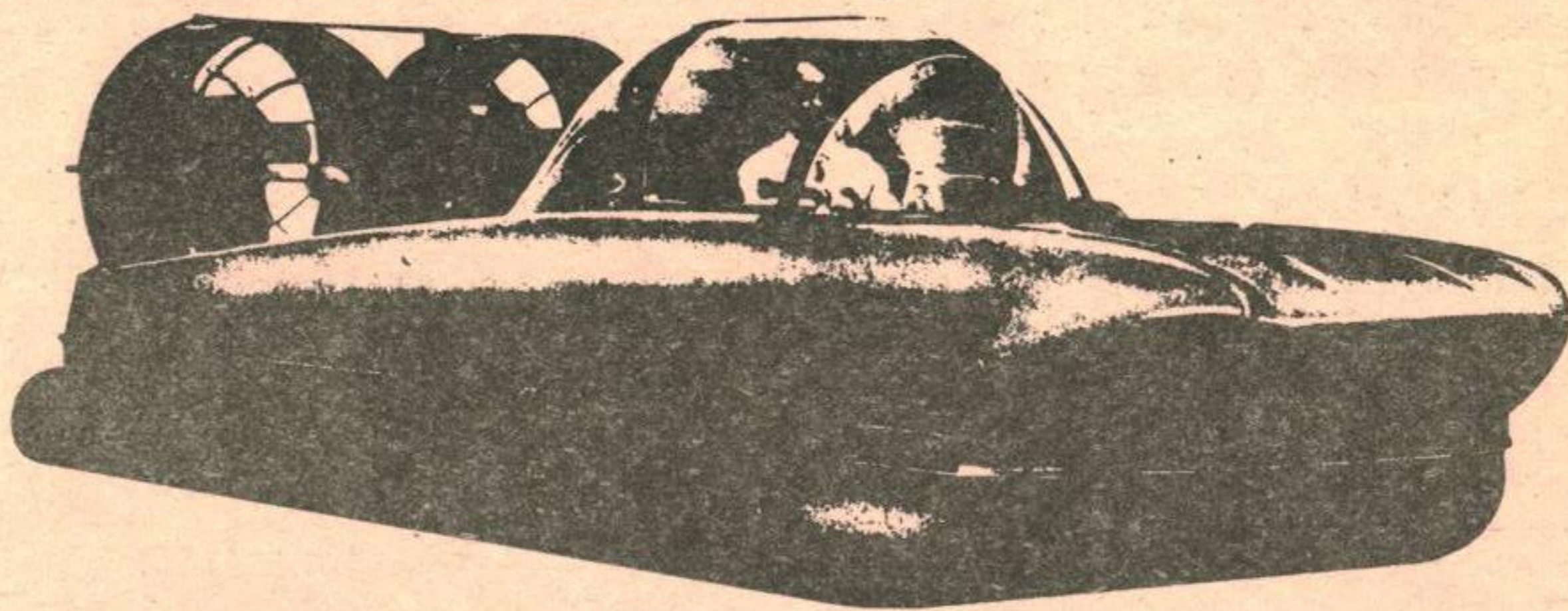
**FASTEST  
SERVICE**  
IN GIMLI

Phone  
**642-5158**

Catalogues available

CATALOGUE  
& RETAIL SERVICE

# The Exciting **NEW** HOVEROVER



The HoveRover **2** Seater is a true Air Cushion Vehicle!



The Vehicle for **WORK...SPORT...YOU!**

OVER LAND

*Carries you over Land, Water, Swamps, Tidelands, Ice and Snow opening a NEW Concept in year 'round recreation. Will climb grades and into areas that are inaccessible by boat or wheels...*

**\$3,995.**

OVER WATER

GIMLI HOVEROVER SALES

BOX 1046, GIMLI  
OFFICE 642-7275  
RES 642-5206

FOB OTTAWA



**5. Farm Vehicles**

Slow moving tractors, horses and wagons may appear far away, but your're often upon them before you realize it. When you see farm vehicles slow down and proceed cautiously.

**6. Animals**

Drivers must be alert to the possibility of cattle, sheep or other animals being herded across or along rural roads. And many wild animals create hazards crossing rural roads especially at night.

**7. Farm Houses**

- Where there's a house there's a driveway, although you may not see it. A farm vehicle may spurt from a driveway into your path or turn in front of you into a driveway. Whenever you spot a farmhouse, automatically slow down and keep a look out for vehicles, pedestrians and/or farm animals.
- If you enter a rural road from a driveway, make a full stop and look both ways. When the road is clear, turn onto the road, keeping as far to the right as possible.

**8. Bridges**

- Some rural bridges are only one lane and have dangerous approaches/exits. Slow down when you approach this type of bridge and make sure no one is crossing from the other side. If you see an approaching car, pull over to the right, stop and give it sufficient room to get off the bridge.

**9. Intersections**

Some roads do not have stop signs and vision is restricted because of trees, brush or crops. Be alert for intersections and be sure it is safe to proceed before entering an intersection. The same precautions must be used at rural railway crossings.

The Safety Herald is authorized by the Chief of Technical Services and is prepared by the Directorate of Transport at CFHQ, Ottawa in the interests of Canadian Forces personnel wherever they may drive.



# DEFENSIVE DRIVING

One pessimist offered this advice for defensive driving.

You should always drive in modern traffic as though every other driver is an idiot.

That may be a rough attitude to take toward fellow-drivers, but you must watch out for the other driver. Perhaps he is not as smart as you are, but it's up to you to be as patient as possible. You certainly can't afford to get angry.

Instead of bulldozing your way through (like the idiot driver) there are times when you must give a little in order to avoid mishap. Yielding the right of way in one of those annoying situations may not only save the other fellow's life, but yours as well.

This means you must always be aware of the situation ahead, on either side and behind you. Allow yourself an ample cushion of space between your vehicle and the one ahead, at least one vehicle length for each ten miles of speed..... even more in bad driving conditions.

Traffic flows smoothly when everyone follows the rules. Be sure you are not the cause of an accident.

Drivers are reminded that the amber caution sign on the traffic light doesn't say "C'mon, hurry up and you can get through!" It does say, "You've got time to clear the intersection if you're in it; but watch for impatient drivers and pedestrians waiting to jump in from your right!"

THE *falcon lounge*  
OF FIRST AVENUE  
GIMLI, MAN.

## CO-OP INSURANCE

AUTO - FIRE - MOTORCYCLE  
3, 6 & 12 Month Policies,  
*Issued Immediately*  
INSURANCE AT COST  
PLUS EXTRA BENEFITS  
All military personnel  
insurable.  
Agent: J.B. Heidinger  
85 5th Ave.  
642-8347

## CRONSHAW'S JEWELRY ENGRAVING

( One Day Service )  
WATCH REPAIRS  
JEWELRY REPAIRS  
642-5039

## GIMLI HOTEL (The Whitehouse)

OVERNIGHT ACCOMODATION  
REASONABLE RATES  
ENTERTAINMENT  
WED TO SAT

## LAKEVIEW Coin Laundry

& DRY CLEANING  
66 First Ave.

## GEORGE'S TV 70

NEW STORE HOURS  
JULY THRU AUG MON-FRI 5-10PM  
SAT 10AM-6PM

## CHUDD & SONS

Gimli's CHRYSLER Dealer  
SHELL oil products  
642-5329

# GM University

NOT YET FINALIZED

The University of Manitoba is still unable to give a definite confirmation or rejection of a proposed Gimli extension program which was supported by 90 residents of Gimli and the surrounding area in a survey conducted in June. Indications are that it will be September before a final decision can be made by the University. However, it has been established that a maximum of one course could be conducted in Gimli and that both prospective students and the University agree that that course should be Introductory Psychology. What then, is the cause for the delay in further arrangements?

In recent years evening students have favoured psychology to such an extent that the University had planned to conduct six identical Introductory Psychology courses on campus starting in September. When approached with the request for courses in Gimli, Dr. H.H. Stobie, Director of Evening Sessions, stated that the only way the University could conduct a course in Gimli would be to relocate one of the already scheduled (and budgeted)

Introductory Psychology courses so that five would be offered on campus and one in Gimli. Sounds easy. However, if Gimli is to have a psychology course, this means that one psychology professor has to volunteer to drive up to Gimli and back once a week from September to April i.e. during the months when driving is at its worst. Furthermore, the University is at the end of its fiscal year and cannot offer this professor an incentive to make this considerable extra effort. The obstacle, then, at this particular moment is the lack of a professor willing to conduct the course in Gimli. However, not all the psychology faculty is at the University during the summer so this problem may still be overcome. If it is, and the University grants final approval to the course relocation, registration (probably by mail) will be held in September.

Anyone planning to take Introductory Psychology whether or not it is conducted in Gimli may register now for the on-campus course and transfer to the Gimli course if and when the course is finalized. Your registration should indicate an interest in the Gimli course.

## Social Note

Mr. and Mrs. Harry R. Lawson, who were active residents of Gimli for over 20 years, while Mr. Lawson was the C.P.R. agent, and who now have been living in retirement at Victoria, B.C. for some years, have returned to Manitoba to celebrate their sixtieth wedding anniversary. A reception is being held in their honour at the home of Mr. and Mrs. Gordon Lawson, St. Norbert on August 16. For their Gimli friends, their daughter, Mrs. Bill Hannesson, is inviting all who knew them to visit with them at her summer trailer on No. 9 Highway, three miles South of Gimli on Thursday, August 20 from 2:00 to 5:00 p.m.

Mr. and Mrs. Lawson were stationed at Gimli from 1912 to 1915 and again from 1919 to 1939 and were community leaders during all that time and made many close friends here.

CONGRATULATIONS to them on their diamond wedding anniversary.

GM  
CHARGE CARDS

# TAYLOR PHARMACY

CENTRE  
AND  
SIXTH  
GIMLI

YOUR A. R. P. VALUE CENTRE

POND'S COLD CREAM  
16 oz.  
SPECIAL \$2.66

OLD DUTCH CHIPS  
TWIN-PAC  
SPECIAL 63¢

SECRET AEROL DEO  
LARGE SIZE  
SPECIAL 99¢

CREST TOOTHPASTE  
FAMILY SIZE  
Super Special 99¢

FLASHCUBES  
WESTINGHOUSE  
SPECIAL \$1.39

DR. SCHOLL'S  
EXERCISE SANDALS  
SPECIAL \$10.66

NEW DAWN  
HAIR COLORING  
SPECIAL \$1.66

MACLEANS TOOTHPASTE  
FAMILY SIZE  
SPECIAL \$1.19

CHOCOLATE BARS  
NEILSON'S  
10 for 83¢

CONFIDETS  
SANITARY NAPKINS 48's  
SPECIAL \$1.59

20% off on all Records, Stereo tapes, Music Books

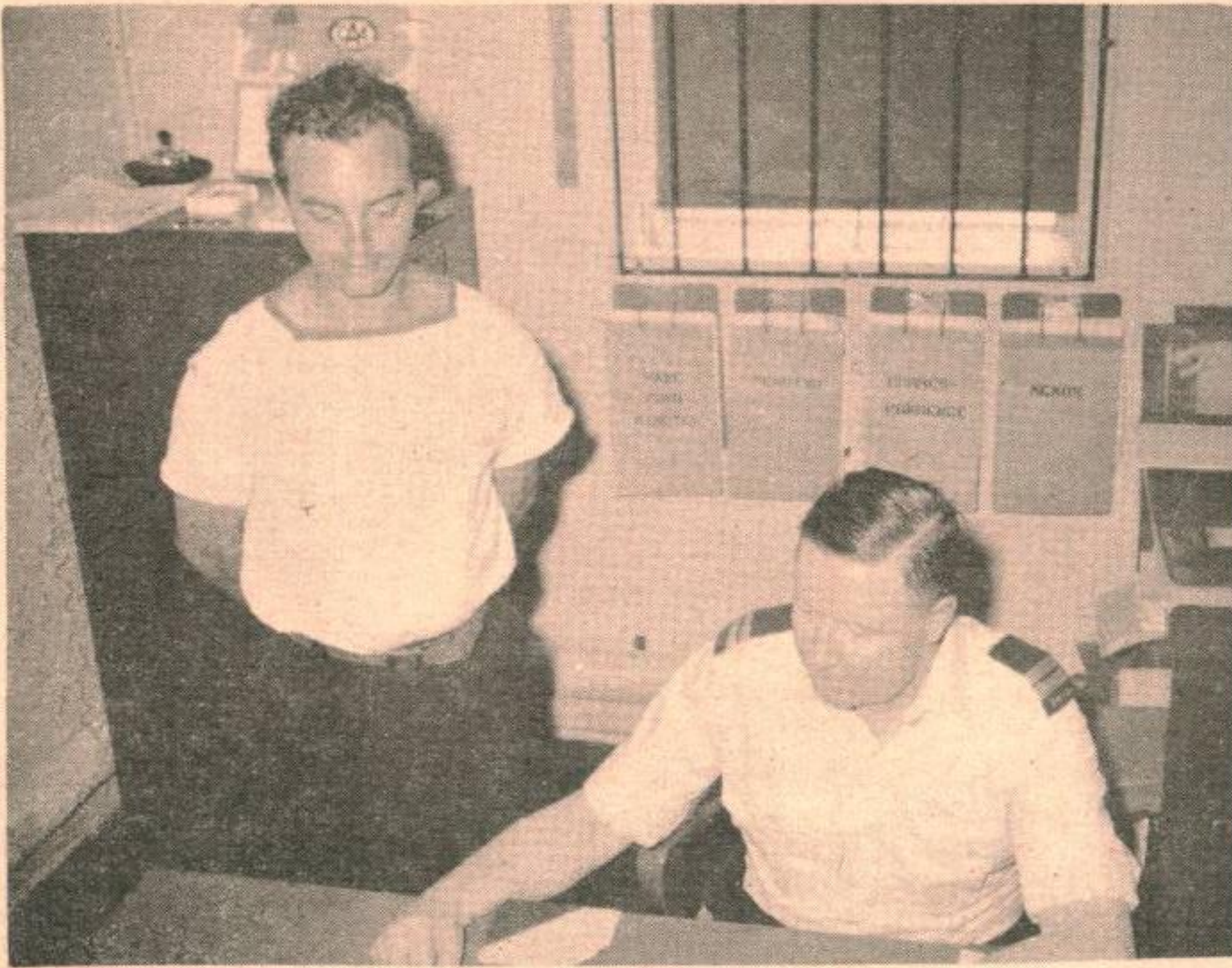
-Pharmacists Pat and Norm Taylor

Bus. phone 642-7470 Evenings 642-5810

You'll save more at Taylor Pharmacy

OPEN until 9:00 PM daily until end of summer

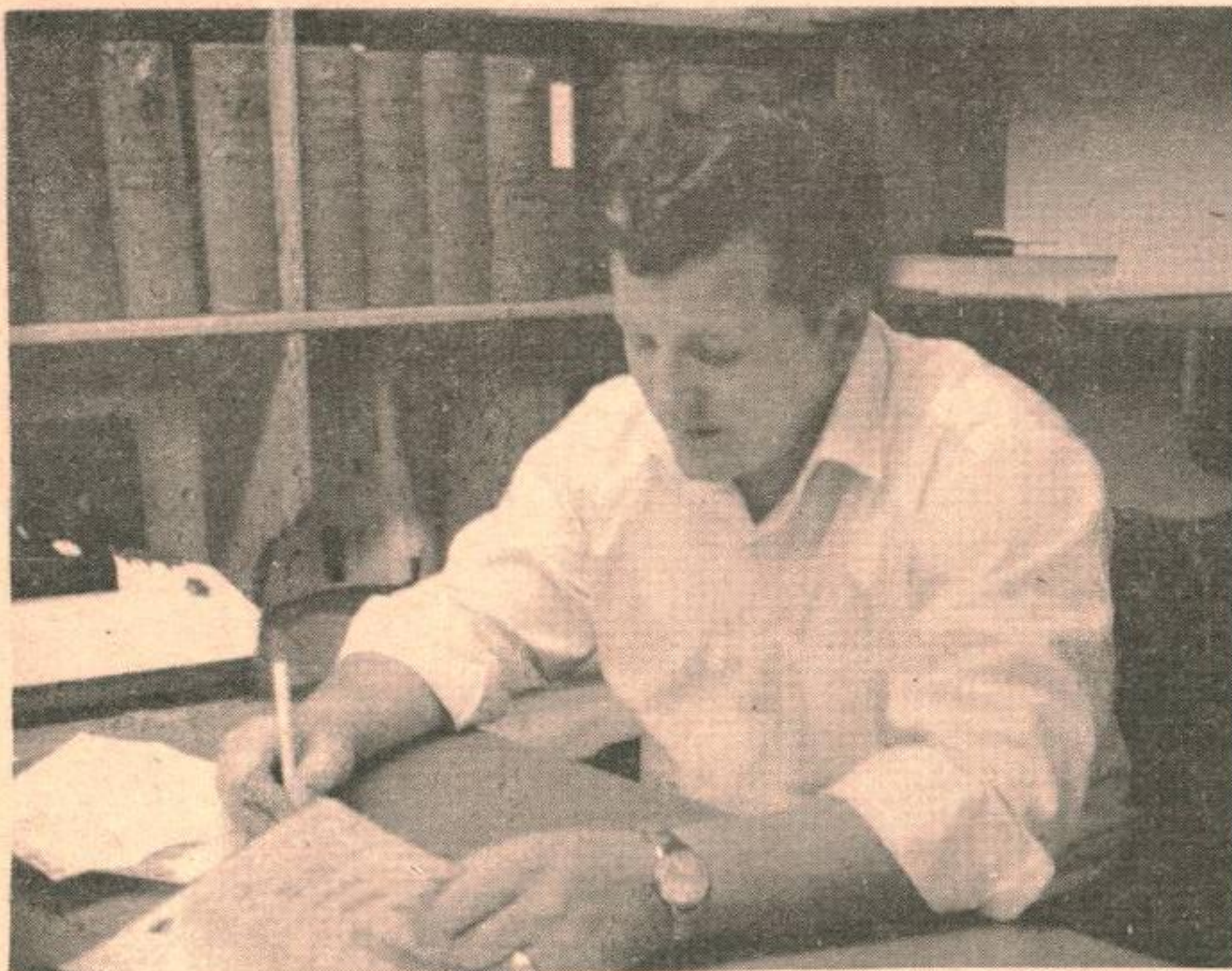
# Meet the Men on the Front Lines



Capt Bob Jackson, BXO, and David Gallinger.



Pte. P. Redman is the cashier and auditor at the Base Exchange.



Managing the Base Exchange is Cpl A. Keating.



Mrs. F Fowler, cashier at the Base Exchange.



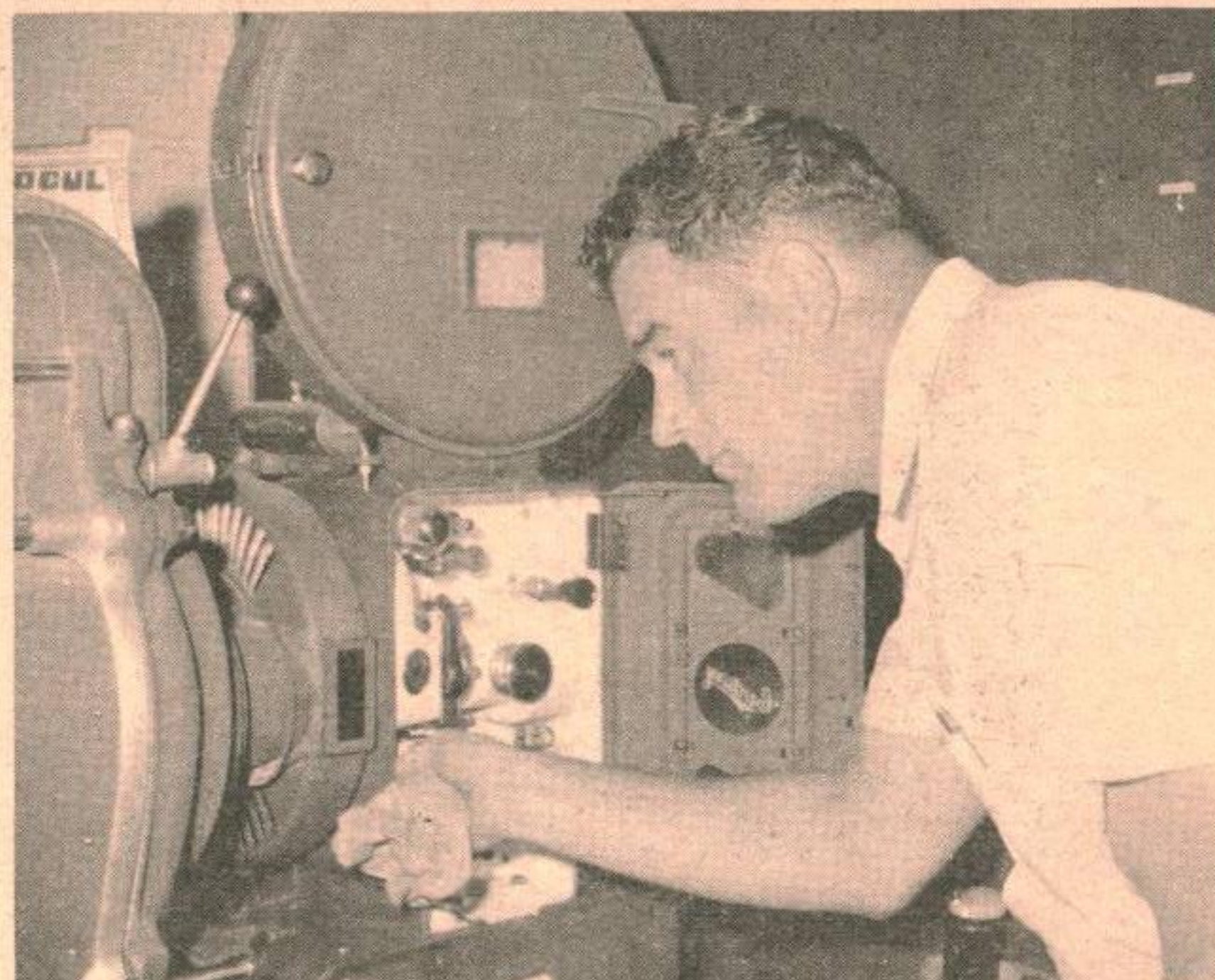
Lynn Legare and Mason Cameron manage the confections at the Base Theatre.



The smiling faces behind the Snack Bar are Mrs. Whitehead and Mrs. Biddiscombe.



Serving you at the Base Auto Club are, from left to right, Merrill Parsons, Jack Thompson, Don Camden, Vincent Palson and Ron Lagrange.



Charles A. Legare is the projectionist at the Base Theatre. Charlie also works at GTS as a projectionist during the days.

#### BASE EXCHANGE FACILITIES

1. The Exchange Officer is responsible to the BAdO for the following:

- a. Providing the goods and services required.
- b. The operation of all non-public fund activities under his jurisdiction in accordance with technical direction issued by CFHQ/DGPSP.
- c. The custody of and the accountability for all records, funds, stock, equipment and other property of the Exchange facilities under his jurisdiction.

2. The operation includes both the retail and services merchandising. The Exchange System includes the following organization.

- a. Central Warehouse - The Central Warehouse at present employs three service personnel namely Pte. Connor, Pte. Calder and Pte. Gallinger. Their function is to purchase and maintain an adequate stock level of merchandise for use in the Messes and Institutes as well as other Base Fund outlets on the Base. The Central Warehouse operates daily from 0800 to 1700 receiving and dispatching merchandise.
- b. Base Exchange - The Base Exchange, which is located in the Recreation Centre, employs four personnel, Mrs. Fowler, cashier, Mrs. Boran typist and stock control clerk, Alf Keating, Store Manager and Paul Redman, who receives, displays and prices the merchandise and also assists with cashier duties.

The BX is open Monday, Tuesday and Friday from 1130 to 1730 hours; Wednesday, Thursday from 1130 to 1600 hours and on Saturday from 1130 to 1600 hours. The BX endeavors to provide a variety of merchandise for sale to authorized patrons, at a price which is competitive with the local stores.

- c. Auto Club - The Auto Club, managed by Mr. Camden, and staffed by two additional service station attendants is open to authorized patrons Monday to Friday from 0800 to 2100 hours and Saturday from 0900 to 1700 hours.

The Auto Club provides a complete mechanical service for all types of vehicles and also carries a complete line of accessories.

- d. Snack Bar - The Snack Bar is located in the Recreation Centre opposite the Base Exchange. This facility is managed by George Levesque, however, as of September 1, Mrs. Whitehead will assume these duties. Other members of the staff are: Mrs. Biddescombe, Mrs. Wright and Mrs. Riedlinger. The staff endeavors to provide a variety of palatable foods for the convenience of Base personnel.

The Snack Bar operates -- Monday, Tuesday, Thursday and Friday from 0900 to 2000 hours; Wednesday from 0900 hours to the end of bingo night; Saturday and Sunday from 1000 to 2000 hours.

- e. Starlite Theatre  
 Manager and Projectionist - Charles A. Legare  
 Cashier - Cpl. Mason Cameron  
 Canteen Stewardess - Miss Lynn Legare.

The Starlite Theatre is operated by N.P.F. for the enjoyment and convenience of Base personnel, civilian employees and dependants. During our regular schedule, which runs from the beginning of September to the end of June, movies are shown on Sunday, Monday, Thursday and Friday evenings commencing at 8:00 p.m. and a Kiddies Matinee on Saturday at 1:30 p.m.

The Starlite Theatre features a variety of movies and classifications to please all tastes; a number of these releases have recently played in the city. Friday nights we try to run features which appeal to the teenage group, but unfortunately the pictures are not always available. Doors open half an hour before showtime. The regular prices are .75 cents for adults and .35 cents for children, where we have to charge higher admission it

Continued Pg. 15.....



## FASTBALL

CFB GIMLI FALCONS 4  
SELKIRK SCRAPPERS 2

Last Monday Falcon fans witnessed Tom Wadey chalk up his tenth consecutive Interlake fastball victory with a 4-2 win over the powerful Scrappers club from Selkirk. The Scrappers fighting for a play off berth invaded Gimli's ball diamond with hope of narrowing their fifth place standing over the fourth place Teachers. But Wadey allowed only three hits and struck out six to assist his team mates in registering their fourteenth straight victory. Doug Gagnon led the airmen at the plate with two hits and also came up with some fine defensive plays in the infield. With the score at a 2-2 deadlock after five innings of play, the Falcons came to life in their half of the sixth with back to back doubles by Tappay and Buchanan, which gave the airmen the go-ahead run. A Selkirk error in the same inning pushed the fourth and final run across the plate. Chuck Arnason took the loss for the Scrappers. He gave up six hits while forcing seven airmen to go down swinging.

CFB GIMLI FALCONS 8  
MAPLETON 5

Tuesday evening the CFB Falcons increased their first place lead by taking a come from behind victory away from the second place club from Mapleton. Lev Linklater's home run off Falcon's Chellew in the top half of the fifth inning put the Mapleton club out front by a 5 - 4 margin which appeared to put an end to CFB's fourteen game winning streak. However, in the last half of the sixth Pruden of Mapleton gave up a single to Ray Gagnon, then walked Jardine and Graham doubled to allow Gagnon to score and tie the game. One out later, Burchanan took the second pitch which cleared the left field fence for a three run homer, to wrap it all up for the Falcons. Tom Wadey came in to relief Chellew in the sixth inning and was credited with the win. Both Falcon pitchers scattered six hits, gave up three walks and struck out six. Buchanan and Graham led the airmen at the plate with three hits apiece.

SELKIRK TEACHERS 5  
CFB GIMLI FALCONS 4

The Selkirk Teachers behind the fine pitching of Zibber Jablonski broke the CFB Falcons fifteen game winning streak Wednesday evening by squeezing out a 5-4 win. Jablonski had the airmen hand-cuffed throughout the game and had a two hitter going for him up until the sixth inning. Selkirks' Waytuik and Streich did all the damage at the plate. They pounded out two hits apiece; two triples, a home run and a double. Tom Wadey took the loss for Gimli which ended his eleven game winning streak. Burt Graham was the only Falcon to pick up two hits. Young Bob Roemers' single in the last inning knocked in two Gimli runs which put the airmen back into contention. However the three run rally in the final inning fell one short of putting the game into extra innings.

CFB GIMLI FALCONS 8  
SELKIRK MERCHANTS 3

It was a busy week for the CFB Falcons --- four games in as many days. The fourth game took place Thursday evening when the Selkirk Merchants visited the Falcons home ground and were greeted with an 8 - 3 setback. Paul Chellew was back in fine form and scattered six hits to post his sixth Interlake fastball victory. Chellew not only struck out seven Merchants but also had ten batters pop up. Doug Tuckers three hits along with two from Ray Gagnon and Ron Beattie did all the damage for the airmen. The trio alone scored five of the eight Falcon runs. With only five games remaining in season play, the Falcons must win at least three to capture the Interlake title.

81 1st Ave.

**GIMLI TAILOR**



**CARRY & SAVE STORE**

*SUITS  
and  
UNIFORMS*

Made to Measure  
four to six weeks

For house pick-up PHONE **PERTH'S 642-5326**

**THIS WEEK'S SPECIAL**

**AUG 15 -- AUG 21**

**RUGS**  
**30% off**

**DRAPES**  
**20% off**

is advertized in advance in the Framfari.

The Theatre Canteen, which has been remodelled last year, now stays open during the show and also offers a variety of goodies to the customers, i.e. soft drinks, pop corn, ice cream, candy, etc.

We can also boast of new furniture, chairs and Chesterfields, where the people can relax and enjoy a smoke. In the past, the Theatre has closed for July and August; this summer we run a Children's Matinee on Tuesday at 1:30 p.m. and an evening movie on Thursday at 8:00 p.m. This is on a trial basis only.

The Starlite Theatre returns to its regular schedule this fall on September 10, 1970.

..... For an Evening of Relaxation, Take in a Movie.....

3. The Base Exchange officer solicits your comments on the Exchange operation and every endeavour will be made to improve the quality. All personnel are invited to utilize the fine facilities available to authorized patrons of CFB Gimli.



Al Carlson receiving the Lt. B. Dowds Memorial Trophy from Sports Officer Tom Ringland.

**OFFICERS' MESS GOLF TOURNAMENT**

On Saturday, August 8, 28 golfers teed off at the Aspen Park course to mark the start of the annual CFB Gimli Officers' Mess Tournament.

For a low gross of 66, Al Carlson was awarded the Lt. Brian Dowds Memorial Trophy. This handsome trophy will remain on display in the Mess.

- 1st Low Net Andre Elieff
- 2nd Low Gross Doug Morris
- 3rd Low Net Jack Graham
- Tiny Crooks
- Bill Joughin
- 3rd Low Gross Ken Strickland
- Dode Sangster

- Longest Drive on Number One D. Morrison
- Closest to Hole on Number Seven D. Hartley
- Most Honest Duffer I. Struthers

Prizes were awarded during a mixed steak barbecue held at the Mess.

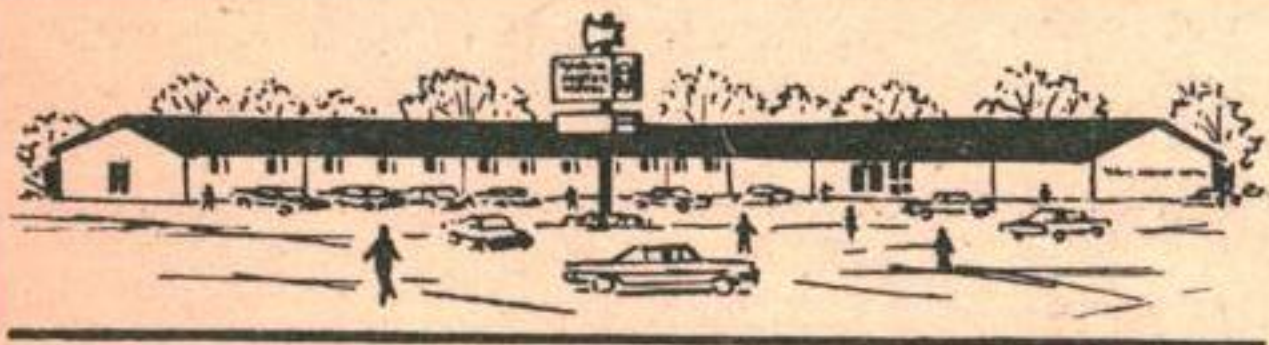


**CENTRE ST. WEST,  
GIMLI**

**PAUL FIRMAN**

642-5007  
642-8857

**SALES & SERVICE**



**Viking Motor Hotel** LTD  
PHONE 642-5181 P.O. BOX 131

- 21 Units -
- Air Conditioned -
- Cocktail Lounge -
- Sauna Baths -
- Dining Room -
- Banquet Facilities -
- Beverage Room -

Exotic Dancer Monday & Tuesday

BAND Wed, Thr, Fri, & Sat.  
Smorgasbord Sun & Mon.

Cor. Hwy.  
No. 9 and  
Centre St.

Phone for  
reservations

GIMLI  
Manitoba  
Canada

**YOU CAN BUY \$100,000 OF LIFE INSURANCE  
AT THESE ROCK BOTTOM RATES!**

**Annual Premium for Decreasing Term Insurance**

AGE	10-YEAR TERM	15-YEAR TERM	
30	\$178	\$179	<i>- Also issued for 20, 25, and 30 Year terms. - Minimum issued, \$100.00. - Issued at ages 16 to 63.</i>
35	\$233	\$234	
40	\$329	\$333	
45	\$480	\$497	

*Convertible to age 65, -plus option to change to level term insurance, without medical examination.*

**FOR FULL PARTICULARS OF THESE  
AND OTHER TERM PLANS CALL**

JACK CAMERON

ASST. BRANCH MANAGER

*Occidental Life, Winnipeg*

BUSINESS 786-5636 RES. 233-6957



# THE 10th HOLE

## Aspen Park Golf Club



### The 10th Hole by Sandy Herrick

Pete Landiak, the Labatt's representative, was on hand last Sunday to present the "Labatts Trophy" to the winner of the first annual A.P.G.C. Open. The Labatt's people very generously donated two beautiful trophies for the event. In addition to the championship trophy they sponsored the "Gimli Hotel Trophy" which goes to the winner of "A" Flight.

The course was fast and, aided by a stiff breeze, proved a strong challenge to the competitors. Although it was necessary to play two provisional greens, most golfers agreed that this was not detrimental to the tournament. Talking to some who were playing the course for the first time I noted that their first impression was that the course would be easy because of the short yardage involved, however when they realized the emphasis placed on accuracy and

the ability to get down in two from off the green they departed with a new respect for the layout.

Again I would like to say a special thanks to Bud Wilds, tournament chairman, O. Karkkainan and Fred Auger his assistants for a first class show. I am sure the event will receive excellent publicity for our future events from those who came from Winnipeg and the surrounding area to compete.

### RESULTS

#### Camp Flight

10	Sandy Herrick	33 - 33 - 66
20	Hugh Kumpula	34 - 34 - 68
30	W. Landiak	35 - 36 - 71 - (66 net)

#### "A" Flight

Low Gross - Gimli Hotel Trophy -		
	Yvon Sorrel	38 - 36 - 74
2 Low Gross -		
	Marvin Magnusson	39 - 37 - 76
Low Net -		
	Zeke Valgardson	40 - 37 - 77 - (68 1/2 net)

#### "B" Flight

Low Gross -		
	Andy Anderson	41 - 34 - 75
2 Low Gross -		
	Vern Murry	42 - 34 - 75
Low Net - Mitch Tkach		41 - 40 - 81 - (69 net)

#### "C" Flight

Low Gross -		
	Doug Tucker	44 - 41 - 85
2 Low Gross - R. Murry		45 - 41 - 86
Low Net - Bill Lott		45 - 42 - 87 - (71 net)

Closest to hole No. 7 - Fred Chorney - putter

Longest Drive hole No. 1 - Harry Poleschuk - putter

### MEMBERS NOTE

The Aspen Park Golf Club members play-offs will begin the week of 24 to 30 August. All members interested can enter their names at the Pro Shop before 21 August 1970. Players who will be playing in the Men's and Ladies handicap events must have a valid club handicap.

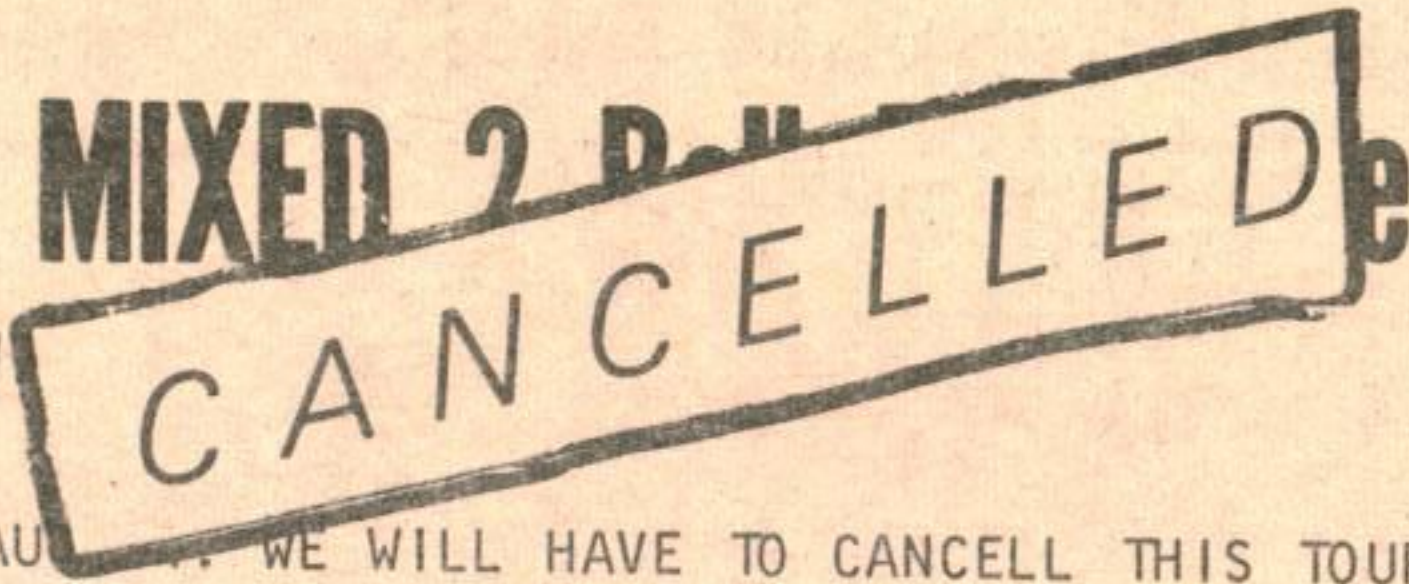
### LADIES SECTION

This year a trophy will be presented to the most improved beginner golfer. This trophy is based on 9 holes only and must be played for on Monday - Ladies Day. Those wishing to compete, must specify the week they wish to play before commencing

## ASPEN PARK GOLF CLUB

### HIS N HERS MIXED 2 P.H.

Prizes - Good



Aug. 16

CUT OFF FOR ENTRIES - 12 AUGUST. WE WILL HAVE TO CANCEL THIS TOURNAMENT IF INSUFFICIENT ENTRIES ARE RECEIVED.

### JUNIORS WINDUP TOURNAMENT

Prizes - Good Time

Aug. 26

### LAST CHANCE CLUB TOURNAMENT

Men's - Ladies - Junior's Flights

Open to all Club members.

Registration book in Pro Shop for the Early Birds. Phone 642-5151 LI5IR2.

play, from August 10 to August 31 inclusive. The best low score (gross) will determine the winner. In case of a tie, there will be a nine hole play-off, entry fee .50 cents. Registration on Ladies Day. We hope all first year golfers will participate.

There is also a trophy being presented for the Ringer Board - located in the Pro Shop - ringer scores are based on the best score you make on each hole for nine holes - during the year. The lowest total will be declared the winner - all scores must be attested by a playing partner and deposited in the box provided to be entered on the Ringer Board. Circle the scores to be counted.

It will be interesting to see the best score you can make for nine holes, so it is hoped everyone will participate. You have nothing to lose.



Back row (L. to R.) Vern Murry, R. Murry, W. Landiak, Hugh Kumpula, Z. Valgardson, Andy Anderson, Doug Tucker and Bill Scott. Front Row (L. to R.) Harry Poleschuk, Sandy Herrick (tournament winner) Mitch Tkach and Yvon Sorrel.

**PLEASE PATRONIZE  
OUR  
ADVERTISERS**



A COMPLETE LINE OF FURNISHINGS FOR THE HOME

## ARNASON FURNITURE CO.

FURNITURE AND APPLIANCES

TV SALES AND SERVICE • ELECTROHOME • WESTINGHOUSE • GENERAL ELECTRIC

PHONE 642-7954

BOX 130 GIMLI, MANITOBA

## SELKIRK LUMBER COMPANY LIMITED

Complete Building Supplies - Concrete Block Manufacturing

SELKIRK 482-3141

WINNIPEG BEACH 389-2024

GIMLI 642-8255

WINNIPEG BEACH

## McGREGOR'S DRUGSTORE

Just 9 miles south of Gimli Hiway #9

**OPEN TILL 11pm  
EVERY EVENING  
DURING JULY & AUG.**

*FEATURING*

- toys
- clothing
- hardware

- PLUS the largest magazine and pocket book selection outside of Winnipeg.

**"WESTERN CANADA'S LARGEST"**



# ROBINSON STORES

OVER 200 STORES  
OPERATING FROM THE LAKEHEAD  
TO THE PACIFIC

★ CHARGE IT — USE YOUR GM CARD GIMLI

## BACK-TO-SCHOOL Sale!

OUR BIG ANNUAL SCHOOL NEEDS SAVING EVENT ★ SALE STARTS — THURSDAY, AUGUST 20th

**Girls' Phantom TIGHTS**

Reg. 3.00  
**157**

Phantom brand is Pate brand's finest, featuring white and ribbed design. White and colors, in sizes to all sizes 4 to 14-year olds. Outstanding quality!

SAVE 1.43

**Sale! Boys' Terry T-SHIRTS**

Reg. 2.99  
**199**

COOL COMFORT  
MACHINE WASH

100% combed cotton Terry t-shirt, long sleeve, ribbed neck, cuffs, hem. Contrast stripe in collar. Washable. P111 in colors. Includes C.P.P. & Co. Made in U.S.A.

SAVE 1.00

**Junior Misses' Sweater VESTS**

Reg. 5.99  
**399**

NOVELTY KNIT  
SIZES 8 to 14

Could be the most popular vest addition to a school party wardrobe. Novelty knit sweater (one with all-weather collar) choice of four colors to give more to give more!

SAVE 2.00

**Little Boys' PANTS**

Reg. 2.99  
**228**

HALF BOXERS  
SIZES 4 to 6X

60% drill, half elastic waist, two front pockets. Straight leg plus 1/2 inch hem. Zipper and done front closure. Colors: Green, Blue, Brown. Little boys sizes 4-6 & 6X. Great value!

SAVE 71c

### BACK-TO-SCHOOL Sale SPECIALS



**Combination Binder 2.22**

A giant vinyl heavy-duty binder containing practical everyday school items. Remarkable Back-to-School offer! Contents — 2 capacity binder, 50 refill sheets, 9 exercise books, index dividers. Special low price!

**Laurentian Colored Pencils 99c**

Canada's best colored pencils — Famous Laurentian brand. 12 brilliant colors in durable plastic case. Exceptional value at this Low Sale Price.

Reg. 1.49 — SAVE 50c

**Sale! Thrift Scotch Tape 88c**

A smart multiple of 3 1000' rolls of white tape in protective blister pack. A must for school or home use. Buy now at this special price.

Reg. 1.47 — SAVE 59c

**Webster's Dictionary Value 1.48**

A popular dictionary for school or home use. 75,000 entries, 1000 illustrations. Large, easy-to-read type. Hard bound cover. For last one service. Special price!

Reg. 1.95 — SAVE 47c

### BACK-TO-SCHOOL CANVAS FOOTWEAR



#### BOYS' RUNNERS

A Back-to-School special! Lace-toe dark canvas uppers, black or white. Ventilating eyelets for cool comfort! Reinforced toe cap, heavy corrugated rubber soles, sponge rubber insoles. Athletic style. Youths' and Boys' sizes. Sale priced to suit.

Youths' 11 to 13  
Reg. 1.69 Pair — **1.34**

Boys' 1 to 5  
Reg. 1.89 Pair — **1.48**

Misses' 11 to 3  
Reg. 1.59 Pair — **1.19**

Ladies' 4 to 10  
Reg. 1.99 Pair — **1.48**

#### MISSES' and LADIES' CANVAS FOOTWEAR

Canvas shoes available in 6 styles. Clear-colored washable. Colors: Black, White, Misses' and Ladies sizes—Shop now and save!



**"Thermos" LUNCH KITS**

Reg. 4.29  
**2.99**

## Exciting Values for BACK-TO-SCHOOL!



**Junior Misses' Dresses** SAVE 2.11  
Reg. 7.99 Each **5.88**

Popular plaid acrylic fashioned into three pretty styles. Perfect for school days. Machine-wash! Assorted plaid and colors. Sizes: 7 to 14. Shop early for best selection!

**Girls' Perma-Press Blouses** REAL BUY!  
Reg. 2.00 Each **1.67**

Perfect for school or leisure hours. Perma-press cotton blouses with the neat look. Machine-wash! White only in sizes: 7 to 14. You'll want a couple at this Special Price. Super Special!

**Girls' Fancy Panty Briefs** SPECIAL  
Reg. 1.00 Each **88c**

Fine quality fancy pattern in assorted styles and colors. All sizes and no special fits. Complete size range: 8 to 14. 2 to 6X. Stock up at a savings!

YOUR CHOICE 3 PAIR FOR



**Ladies' Double Knit CARDIGANS**

Reg. 7.99  
**5.99**

A seven-gauge double knit bulky cardigan — 100% acrylic, fully fashioned. Collarless, self patterned front and sleeves. Self covered buttons. White, Aqua, Green, Gold and Natural. Sizes: S-M-L. Special price!

**Ladies' 'A' Line SKIRTS**

Reg. 3.99  
**2.99**

Meticulously tailored bonded acrylic A-Line skirt in attractive check pattern. Self waist, back zipper closure. Assorted colors in Misses' and Ladies' sizes 18 to 18. Outstanding sale value!



**Sale! Ladies' Nylon Panty Hose**

For the most elegant panty hose line ever! Dress above, 15 denier all stretch. Strong fitting mesh! Trade best Colors: Tender, Design, Clear, Tease. Sizes: S-M-L-XL.

Reg. 1.39 Value — **99c** SAVE 40c

**Girls' "Fruit of the Loom" T-Shirts**

Fully guaranteed, expertly tailored... a delight to wear. Elasticated turtleneck collar, long sleeves. White and assorted solid colors. Individually packaged.

Reg. 2.99 **1.99**

**Jr. Misses' Plaid Stovepipe Pants**

Just right and just the pants she wants for school or leisure wear. Fashioned from bonded acrylic in either bright plaid pattern. Novelty waist, straight leg cut. Color sizes: 7 to 14.

Reg. 4.99 **3.99**

### Young Men's PERMANENT PRESS SPORT SHIRTS

Reg. 4.99 Value

**3.88** Each

• A Quality Blend  
• New High Fashion Colors

A quality blend and they are permanent press — no ironing ever! New high fashion colors, styled with long point collar, long sleeves, double cuff. Stripe pattern is co-ordinated to background. Size: S-M-L-XL. Exceptional August sale value!

Stock Up Now SAVE!



**Heavy Weight Nylon KNEE HIGHS**

Super Special

100% nylon knee highs. Snap-up bargain! Serviceable weight, rib-fancy knit pattern. Assorted popular shades. Stretch to fit sizes 6 to 8 1/2, 7 to 9 1/2, 8 to 11. Priced to size. Shop now, save!

Sizes: 6-8 1/2, 7-9 1/2  
Reg. 89c pair — **63c**

Sizes: 9-11  
Reg. 99c pair — **73c**

#### Little Boys' T-Shirts

"Fruit of the Loom"

100% stretch nylon, mock turtleneck style, long sleeves, rib knit neck, bonded waist. Multi-colored horizontal stripes. Luxurious and soft after washing.

Colors: Brown, Royal, Navy, Green. Sizes: 4 to 6X.

Special Buy — **1.38**

#### Little Girls' T-Shirts

"Fruit of the Loom"

Fully guaranteed meticulously tailored — a delight to wear. Elasticated turtleneck collar, long sleeves. Pretty colors and White. Individually packaged. Size: 4-6X.

A quality garment!

Reg. 1.99 Value — **1.49**



**Boys' Western PERMA PRESS SPORT SHIRTS**

Reg. 3.99 Value **2.88**

Boys' western style Perma-Press sport shirt. 60% polyester, 25% cotton. Long point collar, long sleeves, contrast stitching. 2 flap pockets. Fall shades, size 8 to 16. Priced to save you 1.11. Hurry!

**Boys' Twill Casual PANTS**

Western Style

Reg. 6.00 Value **4.99**

10-ounce Astra-Twist. Western style pants. 75% Polyester, 25% Cotton. Reinforced permanent press. Plus 1 each (size: reg, two front cargo pockets, two back patch pockets, belt loops. Zipper down front closure. Blue, Brown, Green, in sizes: 8-16.

Great Values... Extra Savings!

Get Ready for Back-to-School!

# The Gimli Sailing Club

Our fledgling club is now about half way through the 1970 sailing season, so perhaps it is timely to bring members up-to-date on our progress.

First of all, many thanks to all the members who worked like slaves to make our club lounge the delightful spot it is today. Secondly, it is clear that our small fleet of sail boats is being utilized to a maximum. Rarely, if ever, can at least one of the Albacore not be seen slashing through the waves with club stalwarts at the helm praying for more (or less) wind. The boats are being well treated by members, for which we are collectively grateful. If each sailor handles the boats as if Chichester-Clarke was waiting to hand him a "Good Show" award, they'll last forever.

Lets take a look at our experience line-up to date:

Checkout Skipper - Jack Partington  
and Instructors - Fred Dunk  
- Leigh Farrell  
- John Bishop

Heavy Weather  
Skippers - Dave Cook  
- Mel Lee  
- Fred Richards

Light Weather  
Skippers - Harry Russell  
- Bob Olson  
- Bob Kobierski  
- Bob Radigan

Leigh Farrell and John Bishop deserve recognition as the backbones of our initial training program which the majority of our members attended. Thanks chaps, for a job well done.

We now have our Sailing Club booklet (and membership cards) available for distribution. Members need only apply "the written word" to sailing experience to achieve their skipper endorsement.

Some members have viewed concern that instructors are not always available for training, or skippers are not on hand to take club crew out sailing. Points are well taken, although considering our labour pains, experience levels, and results to date we have not been doing too badly at all. And its only half time!

To improve club sailing activities here is our schedule in black and white:

1. Formal Instruction to Skipper Level - Wednesday - 7:00 p.m.  
Saturday - 9:30 a.m.
2. Skipper Checkout - as above, or on arrangement with checkout skipper.
3. Free Sailing/Practical Crew Instruction - all other times on arrangement with qualified skipper.

Now, to make it easier for club members to plan their sailing activities, our Rear Commodore, Fred Dunk, is erecting a phasing board in the breezeway of the club. Plunk your name down for times you want to sail and hopefully the above noted concern will disappear, like Fred's rudders, into the lake.

And please, everybody, keep in mind that it has been the participating nature of the club that has made our endeavours so much fun, so far.

To skippers, please record boat usage, unserviceabilities, comments and suggestions in the log book in the sailing locker.

To club members, how about some imaginative names for the Albacores? And lets start thinking about a Sailing Club soiree ----- Smooth Sailing!!!

Jack Partington  
Vice-Commodore.

## NORTH AMERICAN LIFE ASSURANCE COMPANY A Canadian Mutual Company

Providing programing,  
consulting and service  
FOR  
ALL TYPES OF INSURANCE

Visiting Base Library,  
CFB Gimli, on Mondays.


G.F. (Kelly) Laliberte  
I. (IKE) Chamish

219 Kennedy St.  
Winnipeg, WH. 3-1526.

## How to shop from Simpsons-Sears Catalogues

T  
E  
L  
E  
S  
H  
O  
P

By phone



T  
E  
L  
E  
S  
H  
O  
P

GIMLI  
SIMPSON-SEARS CATALOGUE  
ORDER OFFICE  
642-5161

## GIMLI DRIVE INN

NOW OPEN  
TO SERVE YOU THIS SUMMER  
TRY OUR -Chili

-Tubby Chicken  
- Hot Dogs & Nips  
-Deep Fried Perogies

642-8355 FOR PICK-UP ORDERS



**TOM-BOY**

Tom-Boy .... where shopping is just a little bit nicer... and prices a little bit lower.

MALKINS PINEAPPLE

**JUICE**

**3** <sup>\$</sup>**1**  
48 FL. OZ.  
TINS

ZING-ZIP TOP CANNED ASST'D FLAVORS

**DRINKS**

**10** **99**¢  
10 FL. OZ.  
TINS

**WHERE FRIENDLY PEOPLE SAVE YOU MORE!**

**COFFEE**

NABOB

1 LB. PKG. **99¢**

REGULAR GRIND

**PEANUT BUTTER**

KRAFT

40 FL. OZ. JAR **1.19**

SMOOTH or CRUNCHY

**FROZEN FOOD**

**STRAWBERRIES**

LIBBYS

2 15 oz. PKGS. **99¢**

CANADA FANCY

PRICES EFFECTIVE AUG. 14, 15, 17, 1970.

**TOM-BOY**

growing with Manitoba,  
to beat '70!



1870 MANITOBA CENTENNIAL 1970

Gimli Tom  
Gimli



# MEAT MAKES THE MEAL!



CANADA YOUNG UTIL. GRADE  
FRYING - 3-4 LB. AV. - FRESH or FROZEN

## CHICKEN

LB. **33¢**

VALUE CHECK'D RED or BLUE BRAND - BONELESS, LEAN, NO WASTE

## HIP or RUMP ROASTS

LB. **99¢**

# TOM-BOY EXCELS IN PRODUCE!

CANADA No. 1  
"MELT IN YOUR MOUTH GOODNESS"

## CORN ON THE COB

6 COBS **49¢**



## PEACHES

B.C. CANADA No. 1

"ORCHARD SWEET"

2 LBS. **49¢**

WE RESERVE THE RIGHT TO LIMIT QUANTITIES

Boy



# TOM-BOY



Westfair Associate

**CANADIAN PROFESSIONAL HOCKEY SCHOOLS LTD.**  
 Box 263, Winnipeg 1, Man. — Ph. 284-6431



PETE  
STEMKOWSKI  
—DETROIT—



BILL  
SUTHERLAND  
—PHILADELPHIA—



JIM  
JOHNSON  
—PHILADELPHIA—

Free Ice Skating, Hockey School Information and Registration at Gimli Arena, Gimli, Man. 1:00 p.m. - 2:30 p.m. SATURDAY SUNDAY AUGUST 15 16 — skates and stick. Join your instructors on the ice. Boys and Girls 7-18 welcome. Enter draw — win 1 free week hockey school. LOCAL BOY, REG LEECH, BOSTON BRUINS WILL BE HERE

Hockey School: At Gimli-Minn. 4 hrs. per day — 4 weeks — Aug. 17 - Sept. 5. Price from \$40.00 per week. At Fort Garry: Sept. 14-26; Oct. 5-17; 2 hrs. per evening. Starts 5:30 p.m. Enroll for one or more weeks. Price \$25.00 per week. Special family discount for more than one student.

Gimli Arena Schedule: Public Skating every evening 8:00 p.m. - 10:30 p.m. Saturday & Sunday 2:00 p.m. - 4:30 p.m. Ice rental available. Senior Hockey Games every Saturday & Sunday 7:30 p.m.

— FOR MORE DETAILS —

Apply Canadian Professional Hockey Schools and Sports Centre at 1195 Pembina Hwy., Fort Garry 19, Man. Ph. 284-6431, or Gimli Arena, 642-5434, Gimli, Manitoba.

**CENTENNIAL CARAVAN COMES to GIMLI**  
 AUGUST 23, 1970

The Manitoba Centennial Caravan will be in Gimli Sunday, August 23, from 10:00 a.m. to 10:00 p.m. and everyone is invited to come and see a highly interesting visual and audial modern portrayal of Manitoba history in the large vans which are touring the provinces. They will be located at the Stefansson School grounds. A local program of talent will entertain part of the time and the Gimli Hospital Auxiliary is holding its fun-fair at the Gimli Park the same day, with many varieties of booths to entertain and amuse you. So make a day of it and come to Gimli for the Centennial Caravan.

Mart - Cont

For Sale: Deluxe Viking Freezer. \$95. Phone: 642-5338.

For Sale: Top-condition UNI Camera with normal and wide angle lens plus carrying case, \$175. also Daximart 1000 35mm projector with slide or rotary tray, brand new \$75. Also Braun F270 flash unit, like new \$40. Plus one S.S. Stewart guitar, like new - \$40. Can be seen at Photo Section or call 642-5284 or Local 61.

For Sale: Yashica Mat L.M. camera with 80mm lens. Built in light meter. Accessories included are lens hood, rolleiflex No. 1 close-up lens and five filters. Phone: P.A. Burke 642-8163 or Local 77.

For Sale: Poloroid land camera, nearly new. Best offer. Phone: J. Chic at 642-5151 Local 43.

For Sale: wooden folding travel crib baby lounge, carriage stroller, folding pottie chair, also a reel type push lawn mower. 19-7th Ave. Gimli.

For Sale: 11 month old male Pmeranian. Registered and with papers. Phone: P.A. Burke-642-8163 or Lo.77.

WANTED: homes for two, eight week old kittens. Both kittens are male, pure white in color and hous-broken. Yours for the asking. Phone: 7430 or Local 167.

WANTED: Large, old-fashioned china cabinet. Phone: 642-8284.

For Sale: 1967 Viking 15 H.P. out-board motor. Very good condition. \$275. Phone: 642-5137.

For Sale: Large tricycle. Phone: Cpl Elliott at Local 61 or Winnipeg Beach 389-5560.

DANCES, BANQUETS. PARTIES, WEDDINGS



*Men of Note*  
*Orchestra*  
 Jim Glover,

Gimli - 642-8167 or Loc 143

**VACATION TIME!!**

*We Have an Excellent Line*  
*of AUTO ACCESSORIES!*

*Come in and see us...*

**WHERE? — — —**

**BASE AUTO CLUB!**

**INSECT STRIPS AND CHARCOAL NOW AVAILABLE!**

**GIMLI MOVING & STORAGE**

- FAST FREIGHT AND EXPRESS TO WINNIPEG BEACH, GIMLI
- \*\* PACKING \*\* FURNITURE \*\* SHIPPING \*\*
- GOODS INSURED \* ANYWHERE IN CANADA \* RELIABLE SERVICE
- Gimli Phone 642-5269 Winnipeg Phone 774-2259

**DIANES**  
 BEAUTY SALON

*will be closed*

**AUG 10 - AUG 24**

*the*  
*store*  
*for people*  
*in love.*



Bring in this ad when you are purchasing a star brite diamond and we will give you a \$10 gas allowance. We're nothing without your love.

**Ben Moss Jewellers**

Westwood Shopping Centre

Mall Centre 477 Portage

**NEW — Portage & Donald**

**IN WINNIPEG**

## Protestant Chapel

Rev. D.W. Hilton  
Phone: 156r2

SUNDAY - 16 August 1970  
10:00 a.m. - DIVINE WORSHIP

## R.C. Chapel

OUR LADY OF LORETTO CHAPEL  
CFB GIMLI, ASPEN PARK, MAN

Major (Rev.) J. Georges Savoie  
B.A.;LPh.;BTh.  
Phone: 156

### MASSES

Sunday - 9:00 a.m. and  
11:15 a.m.  
Weekdays - 5:00 p.m.

### CONFESSIONS

Saturday - 4:00 p.m. - 5:00 p.m.  
Before each Mass and whenever  
you feel like it. We will try  
to accommodate everyone.

### BAPTISMS

By Appointment: Usually on  
Sunday.

### MARRIAGES

1. Give two months notice to your Chaplain.
2. For a Mixed Marriage - four months notice would be preferable since the Non-Catholic party needs to take a few instructions about the Catholic Faith.

### POVERTY

When you're old and alone and you measure your days with nickels and dimes, rising prices are more than an inconvenience. They choke off life's last small pleasures and kill the final glimmer of hope for something better.

(Mrs. Mary McLeod is 77 years old. She is a widow. She is an old age pensioner and she watches in horror as each day inflated costs grind away a little more of her fixed monthly income).

Mrs. McLeod pays \$41.50 a month for what she calls a hovel. It isn't a hovel, for she has scrubbed and polished a homey warmth into her little suite -- but the ancient frame building that encloses it is ugly, dirty, decaying.

She must put up with the ugliness and dirt because she can afford nothing better and there is a housing shortage in Vancouver; she does not speak out because she is afraid she will be evicted and will have no home at all.

So her last look at life includes a glance down a dark, paint-peeling corridor. Mrs. McLeod, a lovely little white-haired lady with clear blue eyes, is bitter, frustrated and sometimes cold and hungry in prosperous British Columbia.

Her husband became seriously ill in 1945, and died in 1951. For nearly 20 years, Mrs. McLeod worked as a waitress in a downtown hotel dining room. She paid her bills and she paid taxes.

Now she lives on Ottawa's pension of \$76.50 plus \$16.65 from the provincial government. She could get as much as \$30.00 from the province, but since she pays relatively low rent, the allowance is cut accordingly.

Government's bookkeepers make no allowances for the sacrifices represented by the low rent -- the bathroom she must share with the tenants of four other suites, the three flights of creaking stairs she must climb despite the pain of arthritis, the smells of musty walls, bad plumbing and other people's cooking.

Her one luxury is a telephone, which costs \$5.50 a month....and seldom rings. This leaves \$46.15 for each month's food, drugs, clothing, bus fares, everything.

How do you live on \$1.54 a day? "Poorly", said Mrs. McLeod with a little smile. "But it helps to have lived through the Great Depression, the Dirty Thirties. I suppose things were even tougher then, though I wasn't alone....."

### "MAKE ME THE REAL ARTICLE"

"Lord, there's this problem of phoniness.

A Lot of us have had some pretty high ideals,

And we've respected the people who gave them to us.

Then they blew it all by not living up to what they preached. Man, something like that can really turn you off in a hurry.

"I tell you, Lord, there is a lot of phoniness around.

But then I guess You know this far better than I.

What does it mean? That most people are hypocrites?

To be real honest, I guess I have to say, I don't think so.

You did tell us (didn't you Father?) that there is no such thing

as a man so perfect on this earth, that he does not only

good and never sins.

And You also explained that's why You sent Jesus to earth.

Nobody's perfect. Everybody needs forgiveness.

So, I guess instead of picking off every little scab I can

find on others and making an open sore, I'd do better to chalk it up to the soul sickness in all of us, and pray that Your healing may be the final word.

Don't let me slip into the rut of those who feel smugly superior.

Because they sin openly, without shame or pretense.

They're not hypocritical, they say. They're being 100% honest. Their's is a great virtue.

Somehow it seems to me such a smugness is the greatest hypocrisy of all.

I can respect someone who strives to live by high principle and fails, but I cannot truly respect anyone who has no principle at all.

Father, give me conviction and principle high enough to be worth having.

Give me earnestness to live by them, and help me to do so. I know there will be times when I slip and fail, but even then, Lord, make and keep me the real article."



"He's talking about Daddy."

## EINARSON REALTY

FOR SALE

2 Bedroom House

Waterworks & Plumbing

Excellent Location

\$6,000

APPLY:

EINARSON REALTY BROKER

60 First Ave.

642-5585

# The MART

## HOUSES

For Sale: 3-bedroom house in Gimli. Garage and well-treed yard. For further information Phone: 642-8296.

For Sale or Rent - small 4-bedroom house. Phone: 642-5553.

For Rent: 2-bedroom furnished suite (duplex) in Gimli - good location. Available Sept. 1. For information Phone: 642-5326.

## AUTOMOBILES

For Sale: 1959 Vauxhall in running order. New starter,brakes also two studded tires. \$150. or best offer. 98 Willow St., Aspen Park.PH.8207.

For Sale: 1969 Corvette.350/350 H.P. Positraction transistorized ignition 4 spd. trans.,tinted glass,AM/FM radio.Asking \$5,000.If interested Phone: 5437 or Local 420.

For Sale: 1968 Mustang,excellent condition. V8, 289 cu.in., automatic, good rubber plus snow tires. Price \$2,000. or best offer. Phone: 389-5582 or write Box 1131, Gimli.

For Sale: 1966 Mercury Comet Caliente, two door hardtop, 6 cyl. std. Like new condition, \$1150. Phone: 642-5284 or Local 61.

For Sale: 1968 Cortina 1600 G.T. 21,000 miles, radio -excellent condition. Phone: 642-8385 or can be seen at 34-5th Ave., Gimli.

For Sale: 1969 Pontiac Strato-Chief, 2-door sedan, 6 cyl. standard. Exellent condition. Low price, big car that handles like a small car. Phone: 642-7908.

For Sale: 1969 Red Potiac G.T.O., P.S., P.B.,Tilt steering, A. T, Console, etc. Immaculate condition. Want \$3600. Phone: 642-5455 or see at 25-7th Ave.Gimli.

For Sale: 1965 Ford Country Squire-Wagon. Power Brakes, steering, automatic. Can be seen at 60-6th Ave. or Phone: 642-8259.

For Sale: 1954 Ford 1/2 ton. Good running order. Phone: Cpl Elliott at Local 61 or Wpg.Beach 389-5560.

## MISCELLANEOUS

For Sale: Home-made travel trailer. Sleeps six. Electric and water hook-up. May be seen at 98 Willow, Aspen Park. Phone: 642-8207.

For Sale: European style 2-bedroom tent with kitchen attachment. Will sleep five adults. Good condition. Phone: P.A. Burke at 8163 or Lo. 77.

MART-Continued Pg. 22....

# GIMLI HAPPENINGS

If your club or organization wishes to announce an upcoming event call or write B10, CFB Gimli, Aspen Park, Manitoba. or Phone: 642-5151, Local 26.

Sat.15 Aug. CAR RALLY (BBQ)  
1800 hours Offices' Mess.

Sat.15 Aug. MIXED 2-BALL FOURSOME  
Sergeants Mess.

Sat.15 Aug. DANCE-STEREO MUSIC  
2000 hrs. No Charge  
Jr. Ranks Mess.

Sun.16 Aug. HIS AND HERS TOURNAMENT  
C.F.B. Gimli.

Sun.16 Aug. MOVIE-NO WAY TO TREAT A  
2000 hrs. LADY.  
Jr. Ranks Mess.

Wed.19 Aug. HQ,CE,SUPPLY TOURNAMENT  
1300 hrs. C.F.B. Gimli.

Fri.21 to PRAIRIE OPEN  
23 Aug. C.F.B. Gimli

Sat.22 Aug. HAYRIDE/BARN DANCE (BBQ)  
Officers' Mess.

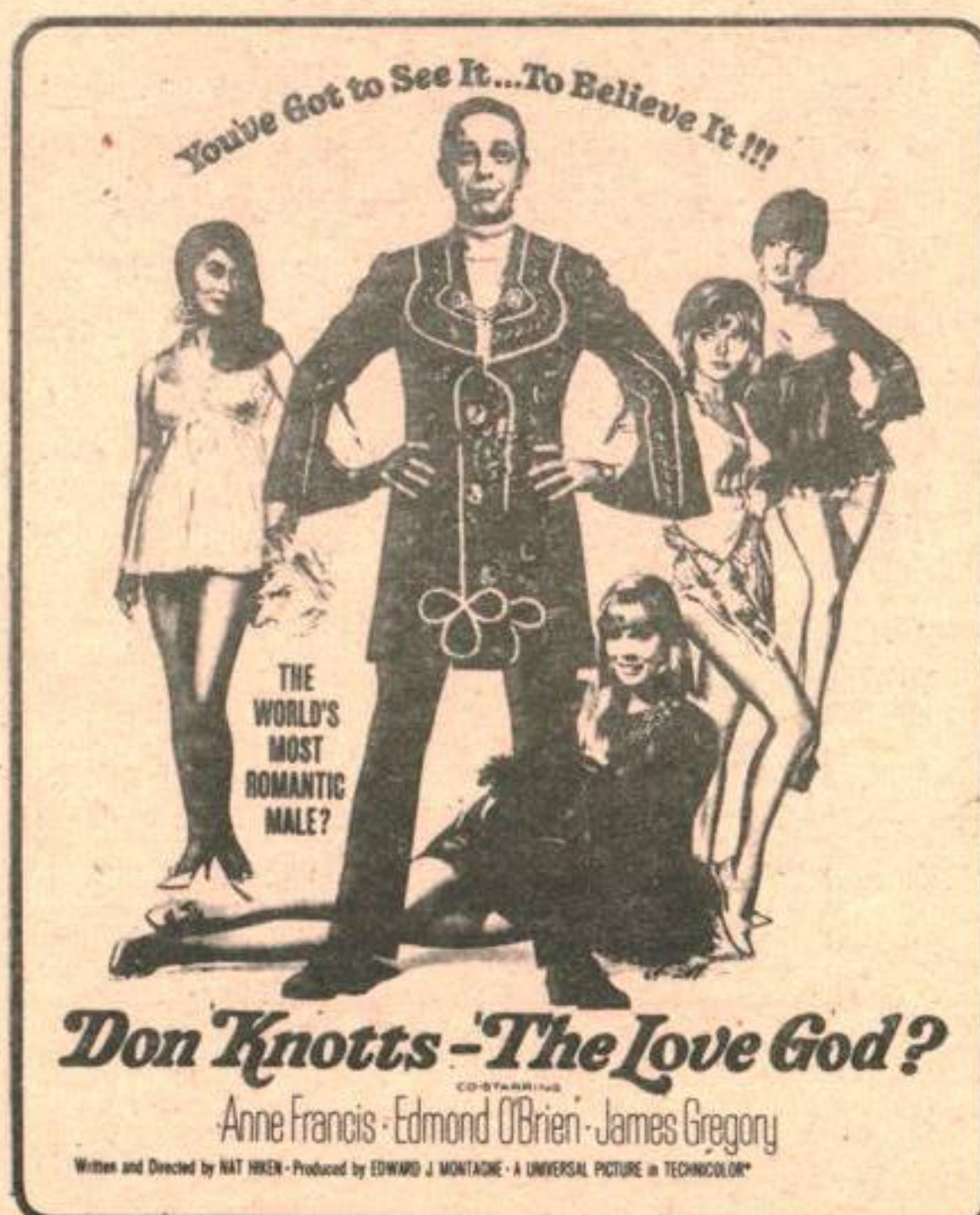
Sat.22 Aug. MIXED COUPLE GOLF  
Jr. Ranks Mess  
C.F.B. Gimli.

Sun.23 Aug. MOVIE-"ROSEMARY'S BABY"  
2000 hrs. Jr. Ranks Mess.

Wed.26 Aug. JUNIORS' TOURNAMENT  
C.F.B. Gimli.

Sat.29 Aug. DANCE-GREG-LEWIS ORCH.  
No Charge.  
Jr. Ranks Mess.

## Starlite Theatre



**Don Knotts - The Love God?**  
Starring Anne Francis - Edmond O'Brien - James Gregory  
Written and Directed by NAT HENEN - Produced by EDWARD J. MONTAGNE - A UNIVERSAL PICTURE IN TECHNICOLOR

T HURS. AUG. 20 8 pm.  
GENERAL

## THE FRAMFARI X-WORD

E T B I T L E T O M G S N H R  
X S N O H N E U S N M I O E M  
P N R I A I O V I A A M L O N  
E O E T O T G I A R E A U M U  
N I L N C P K H T R X N A E S  
S N I E A S W E W A T E R S B  
E U A T R S W E T A C R E O V  
K E R E P H S I I R Y A A C F  
A R T O I T O N M V A T V A A  
L A R K W N S L C M I F M M N  
W T I A Y V F E I N I I F P A  
S N R E I F U T G D L N A I E  
G D N S L N N O T Y A I G N C  
O O I O G N I H S I F Y N G O  
M T G N I V I R D T R O S E R

Listed below are the words that you will find hidden in the puzzle above. These words are spelled out in all directions - so look very carefully. By assembling the letters that remain, in order, you will find today's hidden words which will be published next week. This week's hidden words have 17 letters.

LAST WEEKS ANSWER:  
METEOROLOGIST

## HOLIDAYS

- |         |              |
|---------|--------------|
| BOAT    | MOUNTAINS    |
| BOATING | OCEAN        |
| CAMPING | RAIN         |
| CAR     | RELAXATION   |
| DRIVING | RESORT       |
| EAST    | SEA (2)      |
| EXPENSE | SPORTS       |
| FAMILY  | SWIMMING     |
| FISHING | SUN          |
| FUN     | TENT         |
| GOLF    | TRAFFIC      |
| HIGHWAY | TRAILER      |
| HIKING  | TRAIN        |
| HOLIDAY | TRAVEL       |
| HOME    | VACATION     |
| HOTEL   | VIEWPOINT    |
| LAKE    | VISIT        |
| MONEY   | WATER        |
| MOTEL   | WATER SKIING |
|         | WESTWARD     |

# COMANCHE STATION

Tuesday August 18  
1:30 p.m., 80 minutes  
General