



Framfari



Volume 1 Number 21

C.F.B. GIMLI, ASPEN PARK, MANITOBA

FRIDAY, JUNE 26, 1970

GOULDING CELEBRATES MANITOBA'S CENTENNIAL



Last Thursday afternoon, Goulding School celebrated Centennial with a Pageant Parade through the PMQs. Shown above are Neil Pitman, Patricia Wilds and Kim Haslam. Standing behind is Mrs. Lucile Kenny, the French teacher on the Base.

On Thursday afternoon, June 18, Goulding School, to celebrate the 100th Anniversary of Manitoba's

entry into Confederation, put on a program marking this event.

The program commenced at 1:00

p.m. with the Station Band playing "O Canada" while the Canadian and Centennial flags were run up the pole. All present then joined in the singing of the "Manitoba Centennial Song," played by the Station Band.

A parade led by Mr. Sargeant and the Station Band next filed around PMQ area. Teachers and students in costumes past and present all participated, making a long, colorful pageant consisting of about 250 people. At the conclusion of the parade, the Station Band gave a lawn concert which all enjoyed very much.

Under the capable supervision of Mrs. Tratt, lunch followed in our tea room where a program also ran continuously all afternoon, the items being given by students of various grades all for the entertainment of those being served lunch.

In another double room, there was a large display of school work and projects both individual and group in nature. Most of these followed the Centennial theme.

A third room housed a rock festival by Jamie Dunlop, Russell Wilson, and David Lautsch. This was a most popular attraction all afternoon.

Plays and slides by Grades II to V were housed in another room.

All in all, the afternoon was a tremendous success because of the music, the pageant, the displays, the fine lunch, the program, the large number in attendance, and the Manitoba '70 spirit which prevailed.

The school wishes to thank all those who helped make the afternoon possible: The Station Band for their excellent music, the Messes for the food and dishes, the parents for their keen interest and attendance, the students for their eager participation, the Military Police for their vigilance of the parade route, Capt. LeBlanc and the Station Photographer for their taking of pictures, Mrs. Craig for her assistance with the lunch, the students who served and cleaned up, and all those who in any way contributed to making the afternoon a success.

Editorial

This weekend car drivers in the Gimli area appeared to be out to set some sort of record. There were four separate accidents, all on straight roads resulting in nine injuries and one fatality. There were seven cars heavily damaged or destroyed and one impaired driver arrested.

These were not accidents in the true sense of the word. They were, in a majority of cases, drivers under the influence of alcohol, or speeding -- essentially accidents looking for a place to happen.

It has been said many times that we cannot afford this senseless waste of lives and property. And really when you think about it, it is truly a senseless waste. What kind of peculiar rationalization goes through the mind of a driver when he sets out on the highway with a few drinks under his belt and then decides that the speed limit is just an inconvenience?

The speed limit signs are not on the side of the road because the department of highways needed something to put on the top of their white posts! They are there because that is the maximum speed the road can be Safely negotiated with the minimum of risk to your car and your life as well as to the other drivers on the road.

The next time you set out in your ton and a half guided missile think, do up your seatbelt and drive safely.

This week we extend special thanks to Cpl. Olson for his Willow Island picture essay and Capt. Dave O'Blenis for his article and assistance during the Fly-in. Special thanks go to the CKRC Redeyes for their entertaining brand of fastball.

Remember, if you have an idea for an interesting story, give us a call or drop over to the office.

SOUND OFF

Dear Sir:

In reference to "Disgruntled"-- Sound Off of last week.

I feel that she is way off base on this point. At the time of this occurrence I had occasion to visit the Dry Canteen and was fortunate enough to witness the incident.

The "Lady" assistant referred to was in no way insolent, and was as polite to the parties concerned as could be expected in this type of situation.

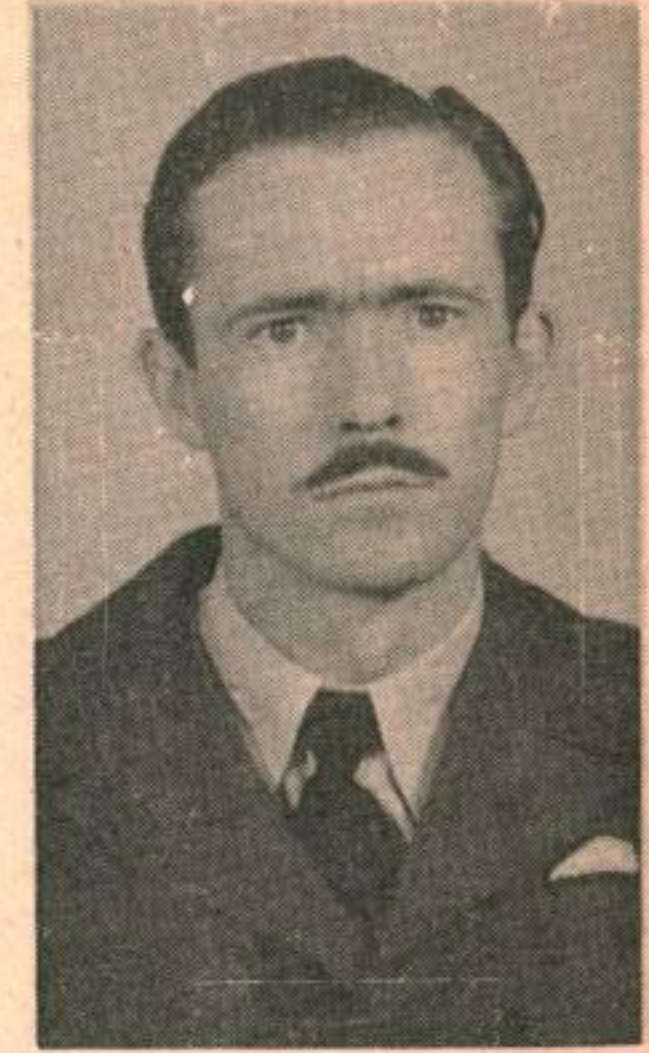
CANEX cards, allowing dependents of Service personnel access to Base Exchange facilities were made available to all dependents of Service personnel. This woman gave the impression that she was not in possession of such a card, by various actions. When she finally came to the conclusion that she was not in possession of such a card "Disgruntled" decided that the item she formerly had intentions of purchasing, was really not required, this, incidentally was after the request for her ID card, at which time she seemed not so "Disgruntled". After coming to the conclusion that she no longer required the article, "Disgruntled" literally stormed out of the Dry Canteen in a severe state of haughtiness as if to say, "Who needs your stuff anyway?"

Just from this action, I could see that the "Lady" assistant felt bad about the incident, at which time the staff member tried to explain the reasoning behind the request, to no avail. Therefore I suggest that "Disgruntled" submit an apology to the "Lady".

To the "Lady" I say, Keep the Faith.....Concerned.

Lt. Col. ALLAN

Heads for the sunny South



Before

Lt. Col. Allan, BTSO at CFG Gimli since July 1966 has been posted to CFB Winnipeg as BTSO effective 1 July. Lt. Col. Allan has had a long and varied career.

He was a member of COTC at University of Saskatchewan from 1939-41 when he joined the R.C.A.F. in Aug. 1942, was awarded Pilot Wings and served as a pilot until his release in March 1945. After graduating with a Mechanical Engineering degree from the University of Saskatchewan he re-enrolled in the R.C.A.F. regular as a Tech AE Officer in Jan. 1948. Since that time has had many postings which included four years in Europe. Prior to coming to Gimli he spent three years at ADCHQ in St. Hubert, Quebec.

We will miss the Allan family at Gimli and wish them all the very best in Winnipeg. It is hoped they come back often to see their many Gimli friends. To date a replacement for Lt. Col. Allan has not been named.



and After

FRAMFARI is published weekly for distribution on Friday. Opinions expressed are those of the writers and do not necessarily reflect Official Canadian Forces Policy. The Editor reserves the right to edit all copy and advertising to suit paper policy. All correspondence should be addressed to: Editor, Framfari
Aspen Park, Manitoba
Phone: 642-5151 - L126R2

Deadline for all copy: 2:00 pm Monday

PUBLISHERCol. J.F. Dunlop Base Commander	SPORTS EDITORC. Potter -L37
BUS. & PROD. MGR.Maj. A.C. Platz -L57	WOMEN'S EDITORMrs. Betty Bennett -7964
EDITORJ.F. Bennett -L154	ADVERTISING MANAGERP.D. Sharkey -L154



ALMOST A DISASTER

On the 16 June 1970 a fire was started beside the POL compound by some small children. Fortunately it was noticed in time and extinguished.

Parents do not have to be reminded of the catastrophe that could have occurred had not a POL man been observant.

Therefore all parents are asked to keep children away from the POL compound, and remind them once again of the danger of playing with FIRE.

The next time we may not be so fortunate.

YOU CAN BUY \$100,000 OF LIFE INSURANCE AT THESE ROCK BOTTOM RATES!

Annual Premium for Decreasing Term Insurance

AGE	10-YEAR TERM	15-YEAR TERM	-Also issued for 20, 25, and 30 Year terms. - Minimum issued, \$100.00. - Issued at ages 16 to 63.
30	\$178	\$179	
35	\$233	\$234	
40	\$329	\$333	
45	\$480	\$497	

Convertible to age 65, -plus option to change to level term insurance, without medical examination.

FOR FULL PARTICULARS OF THESE AND OTHER TERM PLANS CALL

JACK CAMERON

ASST. BRANCH MANAGER

Occidental Life, Winnipeg

BUSINESS 786-5636 RES. 233-6957

How to shop from Simpsons-Sears Catalogues

By phone



GIMLI

SIMPSON-SEARS CATALOGUE

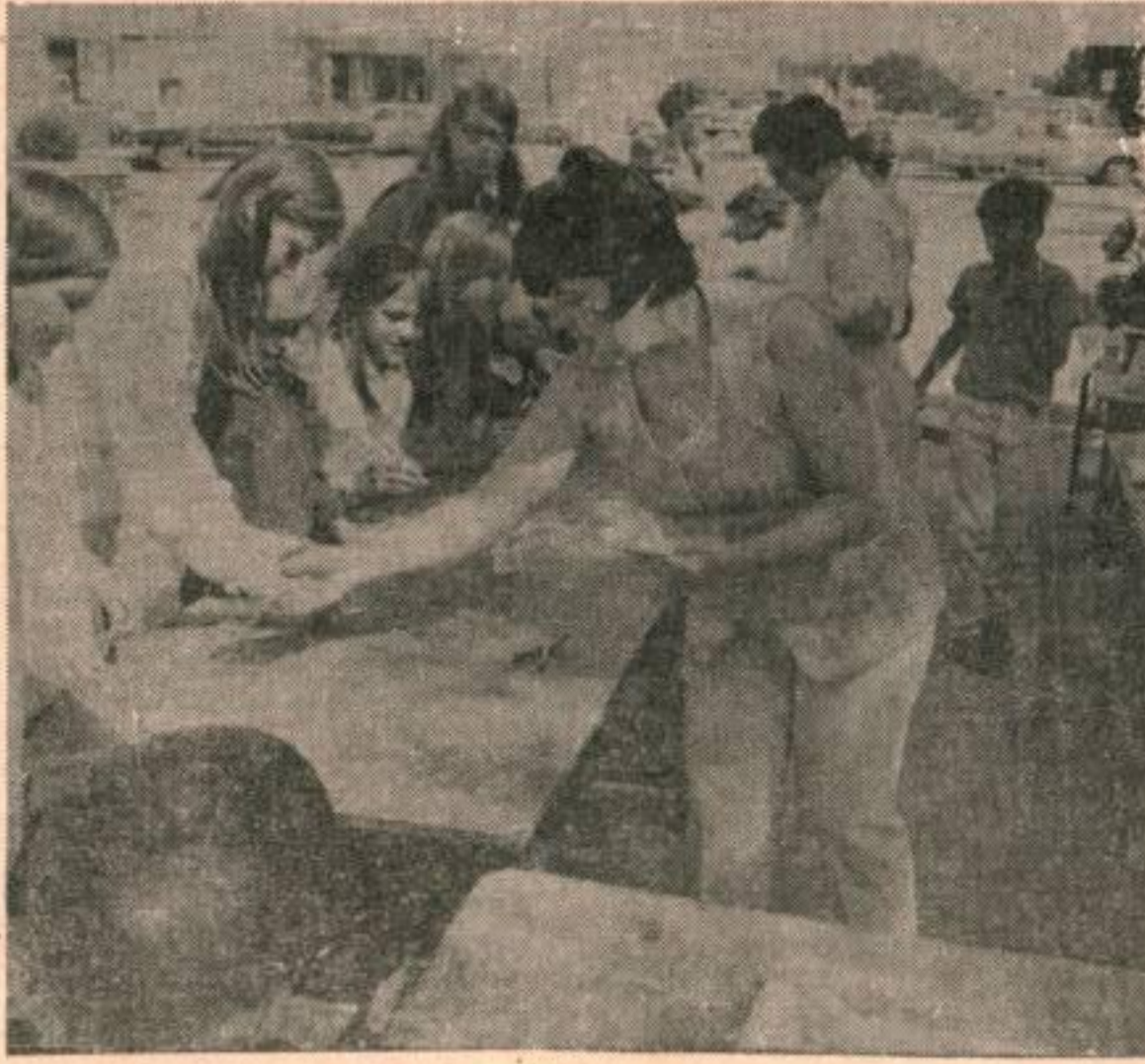
ORDER OFFICE

642-5161

T
E
L
E
S
H
O
P

T
E
L
E
S
H
O
P

Gimli Arts Festival



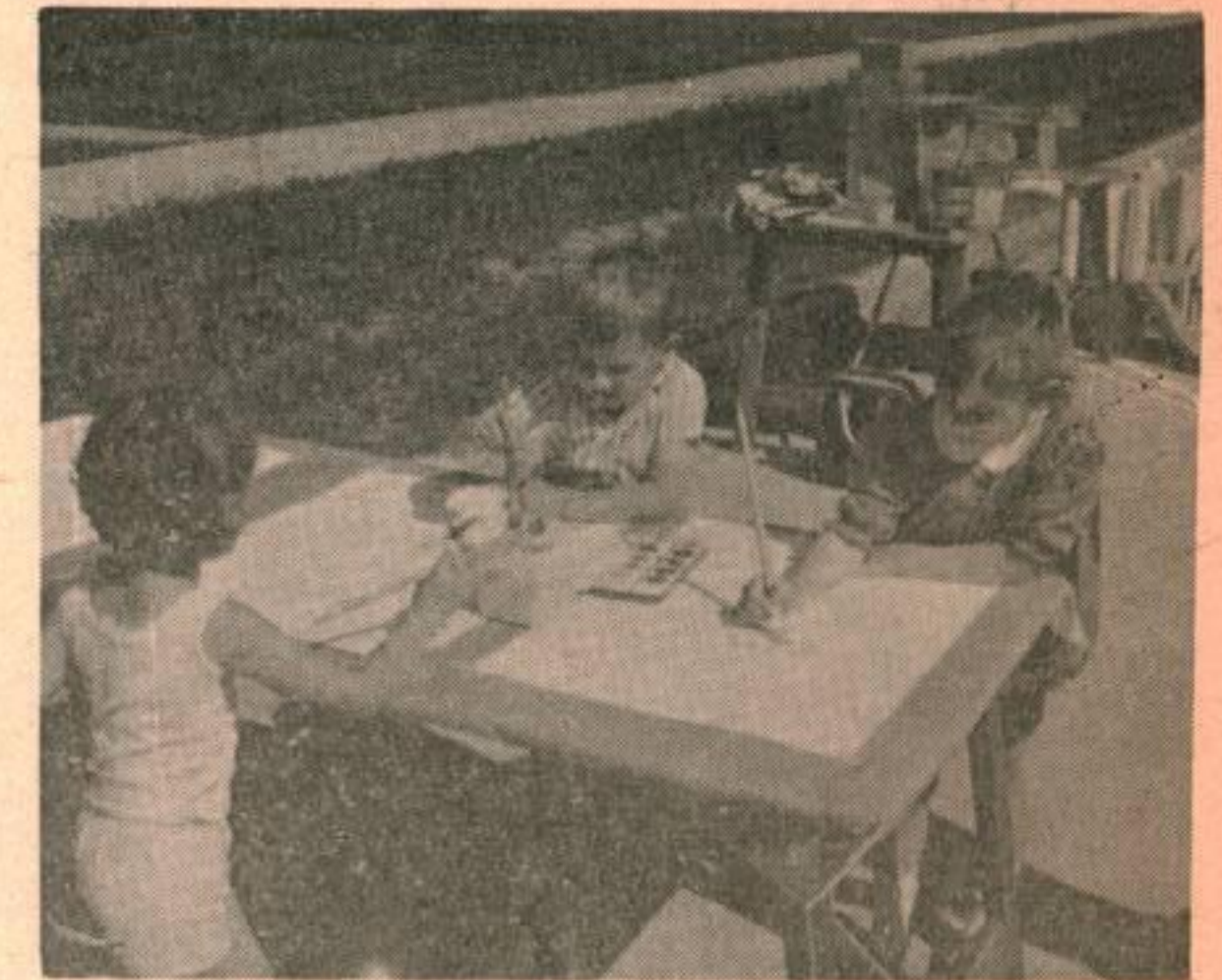
Marie Porter, Secretary Treasurer of the Gimli Handicraft Club and the club's instructor Adeline Gendur were popular people at the handicraft table. Here the children tried their hands at making seed plaques, paper flowers and macrame. -Framfoto

On June 20, 1970 the Arts Festival was celebrated successfully by children and adults on First Ave. in Gimli. Thank you to the Art Club, the Pottery Club and the Handicraft Club for staging this wonderful event. Many, many thanks and appreciation go to Mr. A Sargent and Mrs. Mary Shebeski for providing the brushes. Len Thordarson and Sam Greenberg for drawing paper; The Town of Gimli and the Canadian Forces Base and the residence of First Ave; The Betal Home and private individuals for transportation of the people of Lakeside Camp. Mr. and Mrs. F. Rankin, Mr. and Mrs. R. Almond and the square dancers, Mrs. F. Stacey, the Centennial Choir, the Viking Drug Store and the Tom Boy Store; The proprietor of Lake Inn Restaurant for providing music throughout the day. Mrs. J. Chalaturnyk for her painting won by Mrs. P. Fehr of Aspen Park, Mrs. J. Gendur for her handiworks which were also donated. A heartfelt thank you to Mr. and Mrs. J. Bezanson, Mr. and Mrs. P. Reiss, Mr. and Mrs. J. Malcolmson, Mr. and Mrs. R. Collard, Mr. W. Smith and Mr. J. Gale.

Solange Liang,
Gimli Arts Festival,
Co-ordinator.



John Bezanson, president of the Gimli Pottery Club showing Linda Kennedy the operation of the club's pottery wheel. -Framfoto



(Left to right) Joan Petrowski, Kenny Petrowski and Nicole Duchesne experiment with the finer points of water color. -Framfoto

We are open 9 a.m to 6 p.m.,
SEVEN DAYS A WEEK, to serve you.
CHECK OUR CHOICE OF FISH PRODUCTS

1. Fresh water PICKEREL and WHITE FISH.
2. Ocean SALMON and HALIBUT.
3. Pre cooked packages of ocean fish
FISH CAKES - SOLE - CODS - PEARCH
4. Smoked - BC SALMON - WHITE FISH - TULLIBEE

PARTY AND BLOCK ICE FOR SALE.

WE ALSO HAVE MINNOWS AVAILABLE FOR BAIT.

DOCKSIDE FISH



Centre Street East, Gimli. 642-5108 or 642-5811

Beauty Spot

Is your hair swimming into summer in great shape?

If not don't despair, as even the healthiest head of hair shows some abuse from drying effects of heating and wearing of hats and kerchiefs.

Look to conditioners to restore shine, body and bounce. Some conditioners are setting lotions as well as beautifiers. Some are rinsed out and some are left on.

First you must analyze your hair type and condition.

"Hair that is dry or brittle, unruly or limp and lifeless can be back in shape in no time by using a conditioner after every shampoo."

If hair is fine and limp and needs more body, use an instant protein conditioner that acts as a setting lotion, apply conditioner on clean washed hair before your regular setting.

"Hair is composed of protein similar to the other protein of the body. If your hair is baby fine a conditioner with protein fortifiers makes the individual hair shafts gain new fullness so their total volume soars.

Split ends are prevalent hair woes. Even oily hair can have brittle damaged ends. Use a rich conditioning cream on the ends after you shampoo and towel dry. Apply liberally, and leave it 20 to 30 minutes and rinse well.

Continue this treatment for at least a month and trim ends regularly to keep healthy.

Remember your hair reflects your health. Vitamin or hormone deficiency, diet and even emotional problems affect your hair since its growth and condition are dependent on all these factors.

A rich carbohydrate and fat diet makes hair oily, and a deficiency of such substances will have the opposite effect.

CASSIE PARKER.

NEW ARRIVAL

Bill and Leslie Reinhart are pleased to announce the arrival of their new son and brother for Kevin, 2 1/2 month old Warren Ross.



Serving the military community

Consumer's News And Views

by

CONSUMERS' ASSOCIATION OF CANADA

Have you ever laundered a garment with a wash-and-wear label and discovered to your disappointment that it does not really mean what it says?

The term wash-and-wear is apt to be confused with the more recent development of durable or permanent press. Consumers' Association of Canada has learned through a large volume of letters received on the subject.

Wash-and-wear refers to a garment made of a pre-treated fabric that may be washed, dried and used again with very little ironing. When properly laundered it will give satisfactory service but you will want to do some touch-up ironing on most garments. Statements on labels such as drip-dry, little-or-no-ironing or minimum care will usually indicate the wash-and-wear fabrics.

On the other hand, the durable or permanent press articles are mostly no-irons. They have had resin applied to the fabric and are heat-set after the garment has been made up. You should always inspect a permanently

Continued on page 7.....

TARGET STORE

Complete Family

Clothing

642-5246

Tues. to Thurs. 9am-6pm
Friday 9am-7pm
Saturday 9am-6pm

GIMLI MOVING & STORAGE

- FAST FREIGHT AND EXPRESS TO WINNIPEG BEACH, GIMLI
- ** PACKING ** FURNITURE ** SHIPPING **
- GOODS INSURED * ANYWHERE IN CANADA * RELIABLE SERVICE
- Gimli Phone 642-5269 Winnipeg Phone 774-2259

WEEKEND SPECIAL

Ladies Shimmering ANTRON Panties from
Exquisite Form. Shades of Nude & White in
sizes Small Med. & Large

Reg. 3.00

Weekend Special
1.50 ea.

Matching Bra 5.00 ea.

Ted Jenkins

LADIES and MEN'S

WEAR

DIANE'S BEAUTY SALON at 41
Second Ave. is open for your convenience Tuesday through Saturday.

I AM ALSO OPEN AFTER
SUPPER ON TUES. AND WED. NIGHT!!

TINTS, PERMS AND WIG STYLING
ARE OUR SPECIALTY.

For appointment call
642-8850

DIANE'S BEAUTY SALON

CENTENNIAL ROUNDUP

JULY THE FIRST HAPPENINGS

Don't forget the big Manitoba Centennial/Canada Day parade commencing at 11:00 a.m. on the first of July: Bands -- Floats -- Majorettes -- Clowns -- Novelty Events -- Balloons and Treats for the children. In the park following the parade there will be entertainment galore -- more Bands, Dancers, Singers, the famous German Choir from Winnipeg, the exciting Ukrainian Dance group from the Blessed Virgin Mary Parish in Winnipeg who will be accompanied by the talented local group the Prystupa boys, and there will be other entertainers too good to miss. A programme of events will be available before the first of July.

Also in the Park on the first there will be games and Buffalo BBQ. And be sure to get your free piece of the giant 200-pound centennial cake, Dee-lish-us!

HELP! AU SECOURS! OVERNIGHT ACCOMMODATION REQUIRED

The award winning Brampton Majorette and Drum Corps kindly consented to take part in the Manitoba Centennial/Canada Day parade in Gimli on the 1 of July without charge provided overnight accommodation on the first of July and two meals could be provided. Because this offer was too good to pass up, your Centennial Committee invited the group to participate in our monster parade on the first. The corps consists of 32 girls, seven women, 13 boys and three men. Accommodation has already been obtained for the three men and some others but more space is required. If you can put up a couple of boys or girls for the night of the 1 of July and provide dinner on the first and breakfast on the second for these youngsters who give so freely of their time and talents, please call the Chairman of the Centennial Committee, Mr. Frank Cronshaw at 5039 during business hours or 7429 at other times.

EATONS

CATALOGUE SALES OFFICE

**FASTEST
SERVICE**

IN GIMLI

Phone

642-5158

Catalogues available

CATALOGUE

& RETAIL SERVICE

THE ICELANDIC FESTIVAL OF MANITOBA

The second Annual Exhibition of paintings, pottery, ceramics and sculpture, by artists of Icelandic descent, will be held on Islendingadagurinn, August 2nd and 3rd, 1970.

Purchase prices amounting to \$250.00 will be awarded for the best work in each class.

1. All work submitted must be the original and unaided work of the artist, not previously exhibited at Icelandic day.
2. Participants may submit a maximum of three works.
3. All works must be delivered to Tergesen's General Store, Gimli, Manitoba, before or on August 1st 1970.
4. A label with name, address, title must be attached to the back of each work.
5. Paintings must be suitably framed, ready for hanging, with wire kept back one inch from top of frame.
6. All works must be removed after the show on August 3rd, 1970.
7. This entry form must be filled in and returned to the following address not later than July 17, 1970.

Miss S. Borgford
1292 Valour Road
Winnipeg 3, Manitoba

Please detach and mail - print all information

No.	Title of Work	Medium	Price	Value for insurance purposes
1				
2				
3				

ARTISTS NAME (Surname first)

ADDRESS

PHONE NO.

CONSUMERS' NEWS AND VIEWS Cont'd

pressed garment carefully to see that the seams, facings and zipper are smooth and flat because any puckering or wrinkles in the fabric or seams will not wash or iron out. The linings, interfacings, seam tapes, collars and the like should be of a no-iron material also. Check the size carefully; fit is most important because permanently pressed garments are almost impossible to alter. They may be shortened or made slightly smaller but the material will not lie as flat as the factory finished job. Lengthening hems or letting out seams is not recommended as the pressed-in creases will remain.

Consumers' Association of Canada Received many complaints when the first permanently pressed fabrics were put on the market. It was found that the heavy concentration of resins needed for the finish caused a degradation of the cotton which resulted in the fabrics breaking and tearing in washing and use. Now man-made fibers are blended with natural fibres for strength to give a fabric the best properties of each.

Easy care fabrics have eliminated some clothes care problems but have created others. These fabrics were intended to be cared for in automatic equipment so it is important to follow the rules when you launder.

Do not let your garments become heavily soiled or stained because they are difficult to get clean. It helps to pre-treat grease stains and the collar and cuff lines before washing.

Be sure to sort the clothes. Some fabrics pick up color and lint from others. Wash white garments only with other white articles; wash similar fabrics together. Turn pleated garments and trousers inside out to give extra protection to the finish on the creased edges.

Crowding the washer causes wrinkling, so it is best to do small loads in warm or cool water.

If your machine doesn't have the special wash and wear cycles, set the machine for slow agitation, if possible. It should not be necessary to wash the clothes for more than five minutes.

Rinse in warm or cool water and if you want to use a fabric softener to reduce the static electricity, put it in during the last rinse. It is advisable to take the clothes out of the machine as soon as the cycle ends.

If you are not using an automatic machine do not wring the clothes either by machine or by hand. Hang your garments on non-rusting hangers, shape and smooth the seams, collars and cuffs and let drip-dry. Hang trousers by the cuffs.

With an automatic dryer, use medium heat or the wash-and-wear setting. Remove articles when not quite dry and place them on hangers to reduce wrinkling. The fabric softener and small loads in the dryer can cut down on needed ironing.

Those who use coin-operated laundries or equipment with limited controls will need to give a little extra thought and attention to the job to ensure good results. When using a dryer without special controls, it would be better to put in the no-irons separately at the beginning of the cycle before the machine heats up and add other articles after the no-irons are removed. This may seem rather a nuisance but it is less trouble and time consuming than ironing.

With permanently pressed fabric it is now possible for a homemaker to practically eliminate ironing from her household chores if she uses the no-iron bedding and table linens available and if everyone in the family wears no-iron washables. We have to expect to pay a little more when we buy these fabrics with this built-in service but properly handled, easy care fabrics can be a real boon to the busy consumer.

TAYLOR PHARMACY

Centre and Sixth, Gimli

Bus. phone 642-7470 Evenings 642-5810

GM CHARGE CARDS

"YOUR A.R.P. VALUE CENTRE"

-Pharmacists

Pat and Norm Taylor

For your convenience-

EFFECTIVE JUNE 22 we are commencing our extended store hours.

MONDAY to SATURDAY ..9.00 AM-9.00 PM

SUNDAY12.00 AM-9.00 PM

NOXZEMA Antiperspirant

Economy size **SPECIAL 1.29**

A.S.A. **SPECIAL 79**
Tablets 500 size

NOXZEMA Deodorant Spray
Double size **SPECIAL 1.19**

OZONOL Ointment For First-Aid Reg 1.39 **SPECIAL 99**

MACLEANS Toothpaste Family size Reg 1.59 **SPECIAL 1.09**

WOODBURY'S Cream Rinse 15oz size **SPECIAL 89**

SUDDEN BEAUTY Hair Spray Reg 1.49 **SPECIAL 89**

ULTRA BRITE Toothpaste FAMILY SIZE **SPECIAL 88**

Birthplace Revisited

To some folks, Willow Island is just another pleasant place to take the wife and kids on Sundays. Its sandy beaches and picnic areas are most inviting. I recently visited the Island in the company of Johann Johannason and his sisters Thura (Mrs. Herbert Bjarnason) and Nora (Mrs. Solmi Solmundson) and I could sense that the small holiday resort was very dear to their hearts.

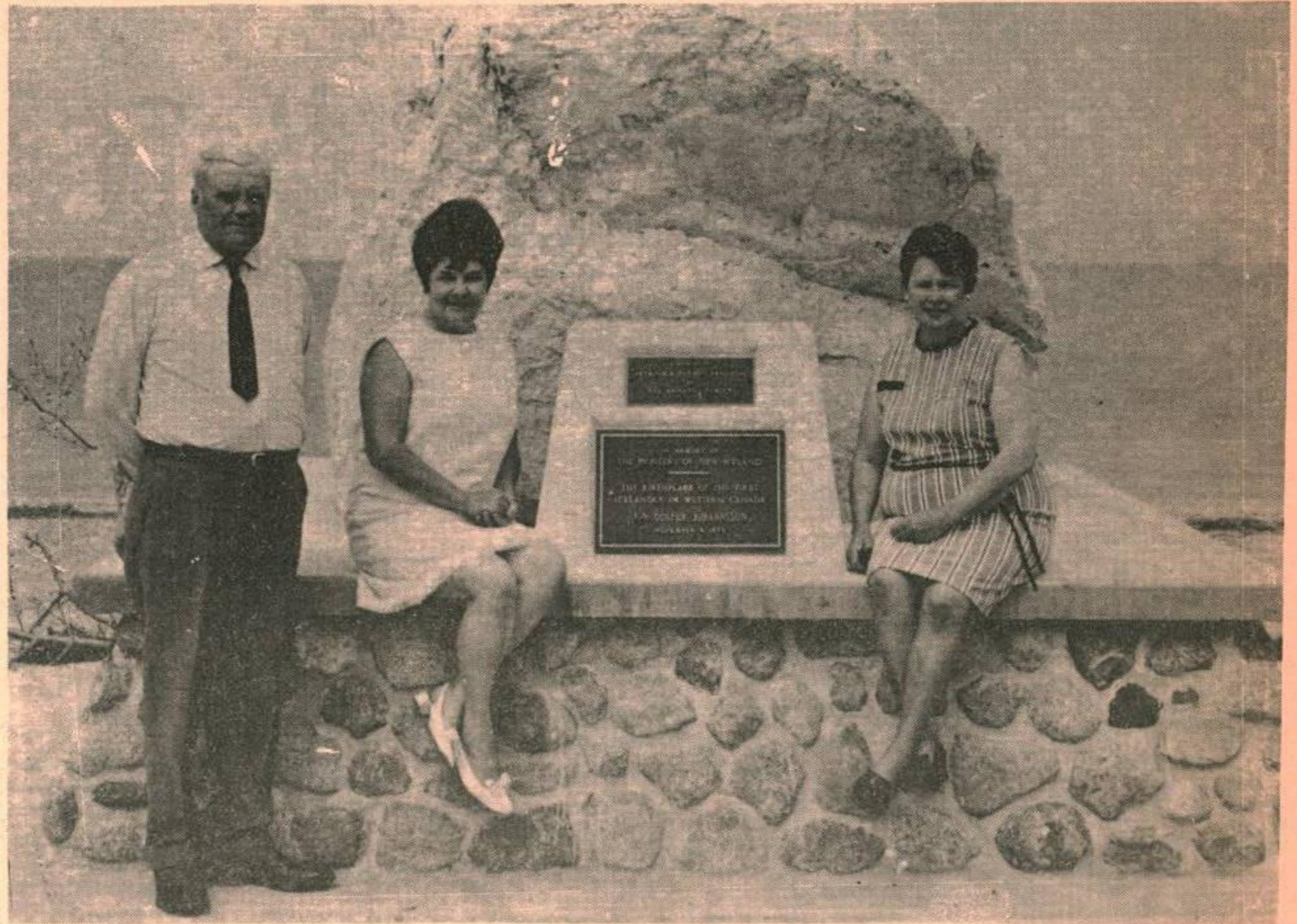
Nearly 100 years ago the Icelandic people chose Willow Island as their landing site and promptly set up tents for shelter against the coming winter. It was in one of these tents on November 9, 1875 that a son was born to Johann and Sigridur Johannson. Young Jon thus became the first Icelander born in Western Canada. Jon was a hardy child and survived a bout with smallpox at the age of two. As there were no schools established in the settlement, Jon and the other youngsters learned from their parents. Jon became a fisherman like his father.

Decendants of that first New Icelander still make Gimli their home. Daughters Thure and Nora both quite proudly stated that they married fishermen while son Johann has spent most of his life fishing the Manitoba Lakes. Another son Steve and daughter Dorothy (Mrs. Beggi Helgason) are now deceased.

In 1967 Canada's Centennial Year, the Arnason Family dedicated a monument on Willow Island to mark the birthplace of the first Icelander born in Western Canada. A large white rock which was near the tent in which Jon Johannson was born was affixed onto a stone base to form a meaningful and attractive reminder of the past.

If you visit Willow Island this weekend, pause a moment to view the historical monument and think about the winter of '75.

-Arnold B. Olson



Visiting the monument honouring the birth of their father is (left to right), Johann Johannson, Thura (Mrs. Herbert Bjarnason) and Nora (Mrs. Solmi Solmundson). -Photo by Olson

CRONSHAW'S JEWELRY ENGRAVING

(One Day Service)

WATCH REPAIRS
JEWELRY REPAIRS

642-5039

North American Lumber -Hardware-
-Paint & Lumber-
-VISCOUNT Mobile & Modular Homes-



83 Centre St.

642-5474

CENTRAL BAKERY

BAKED FRESH DAILY

— Seed Bread — Irish & Rye Bread —

. . 16 oz. loaf, 25¢ each or 10/\$2.30

Sliced Bread . . 5/1.15

Pan BREAD . . 5/\$1.00

Homemade Breads, Buns, & Cakes
Imported Chocolates & Cheeses

HOT PIZZA TO GO - Baked to your order in 15 min.

FINLEY TV

— Service —

26 6th Ave, Gimli

642-5386

The Gimli Sailing Club



The Gimli Sailing Club is pictured grouped around the first of its two Albacore boats to be delivered. The club is holding meetings on week nights and weekends where the members are receiving instruction on the fundamentals of small craft sailing.

Priority Four Space Scarce

OTTAWA (CFP) - Priority four space on trans-Atlantic sked is going to be scarce until the troop rotation is completed this fall according to forces' movements officials here.

The freeze on 'fours affects all overseas flights except the Gatwick Yukon (SFs 161-162) and SFs 307-308, the Cyprus special.

Priority fours on the Gatwick and Cyprus runs - the latter stops at Lahr enroute - have always been scarce. The message adds that troops with less than 30 points are not eligible.

Point totals are based on one for each year of service and an additional point for rank from one for a lieutenant-general to 14 for a private.

Gambling on a space available priority five, they say, will be a bigger gamble this summer.

The rotation and summer training program will affect sked flights Canada-side too. In fact, the 30-point minimum also applies to 'four applications for space on the following flights in Canada:

Continued on page 22....

SELKIRK LUMBER COMPANY LIMITED

Complete Building Supplies - Concrete Block Manufacturing

SELKIRK 482-3141

WINNIPEG BEACH 389-2024

GIMLI 642-8255

ASTRA CREDIT UNION

INSURANCE

FOR OWNERS OF AUTOS, HOMES,
OR HOME FURNISHINGS

Do you want your personal
insurance handled in a
business like manner?

SEE YOUR CREDIT UNION
REPRESENTATIVE

LEAGUE SERVICES Ltd.

Personal Insurance in the
Canadian Tradition

Tues. Afternoons 1-3 P.M.

Shop and Save at

WAYNE'S IGA

The Store That Cares

Groceries

Table Rite

Redbrand Steer

Beef & Table

Fresh Produce

CENTRE STREET GIMLI

Rings are for love.



BEN MOSS
JEWELLERS EST 1910

HEAD OFFICE:

PORTAGE AVENUE
& DONALD STREET
PHONE 942-0735

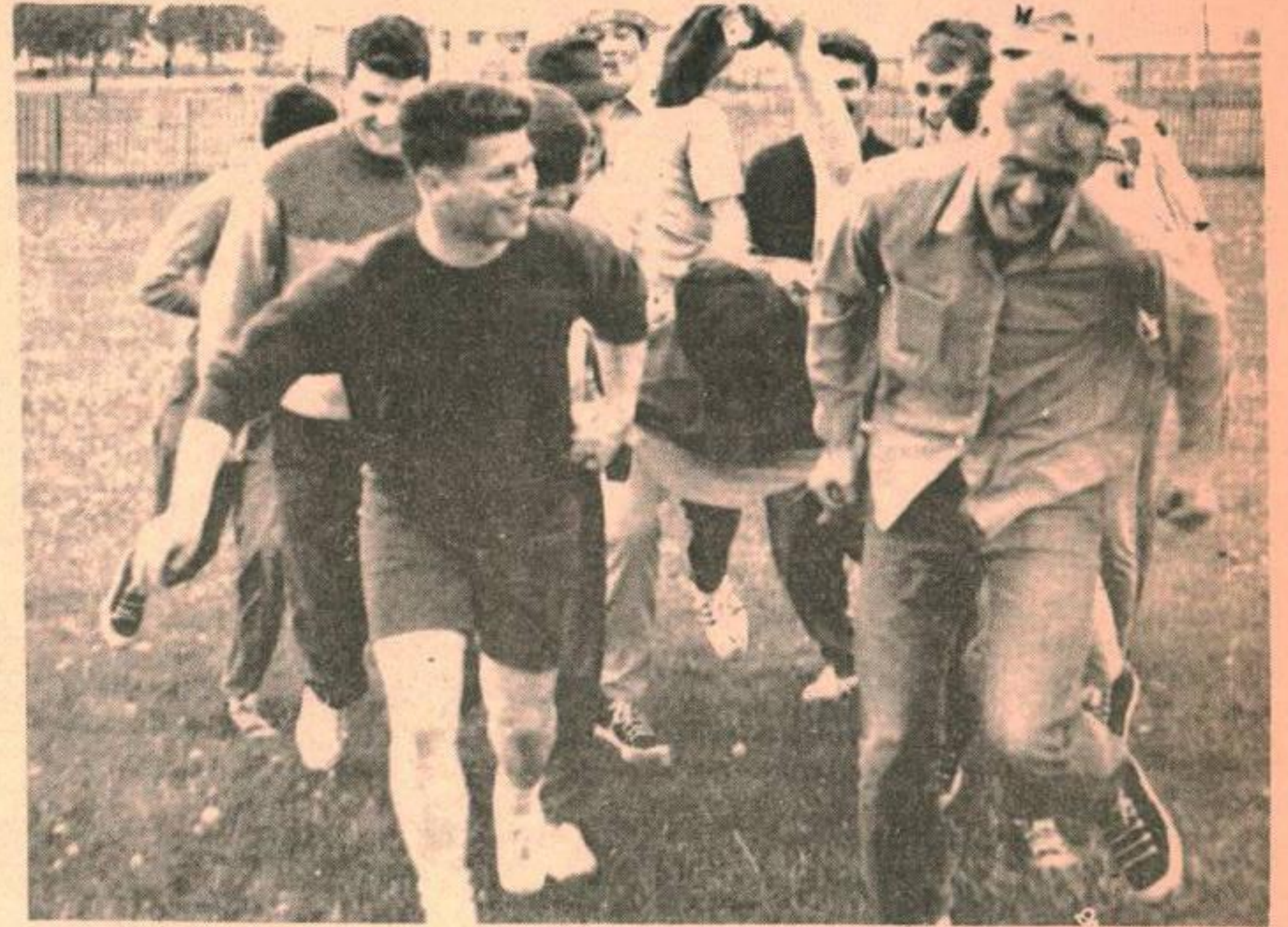
MALL CENTRE
477 PORTAGE AVENUE

WESTWOOD SHOPPING CENTRE
3298 PORTAGE AVENUE

CKRC REDEYES-6 GIMLI BANDITS-5



One of the better looking Bandits, "Chris Desbiens", nearly pulled the game out of the fire for the home team with this epic swing. Maj. Westphal, "B-1" is the unbiased umpire behind the plate.



It took the whole team to carry the "Gravely Injured" Jack Skelly'ton out of the ball park.

You can't afford to miss our Summer savings
on all items in stock.

ARNASON FURNITURE

HOME APPLIANCES AND FURNITURE
642-7954

GEORGES

TV/70

WE STOCK

RECORDING TAPE

Cassette, Cartridge

Open Reel 5", 7", 2400', 3600'

TABLE RADIOS,

RECORDS

45 RPM Top Ten

Selected LP's

TRANSISTOR RADIOS,

CASSETTE STEREO SYSTEMS

Ampex, Sanyo, Philips

Orders taken on scarce LP's

Service calls will be handled as usual.

These hours of bussiness are for the benefit of our customers and technicians during the months of July and August. Beat the heat. Shop in the evening. We have on hand a small selection of used appliances for summer cottages in premium condition. Most with warranty on operation.

NEW STORE HOURS

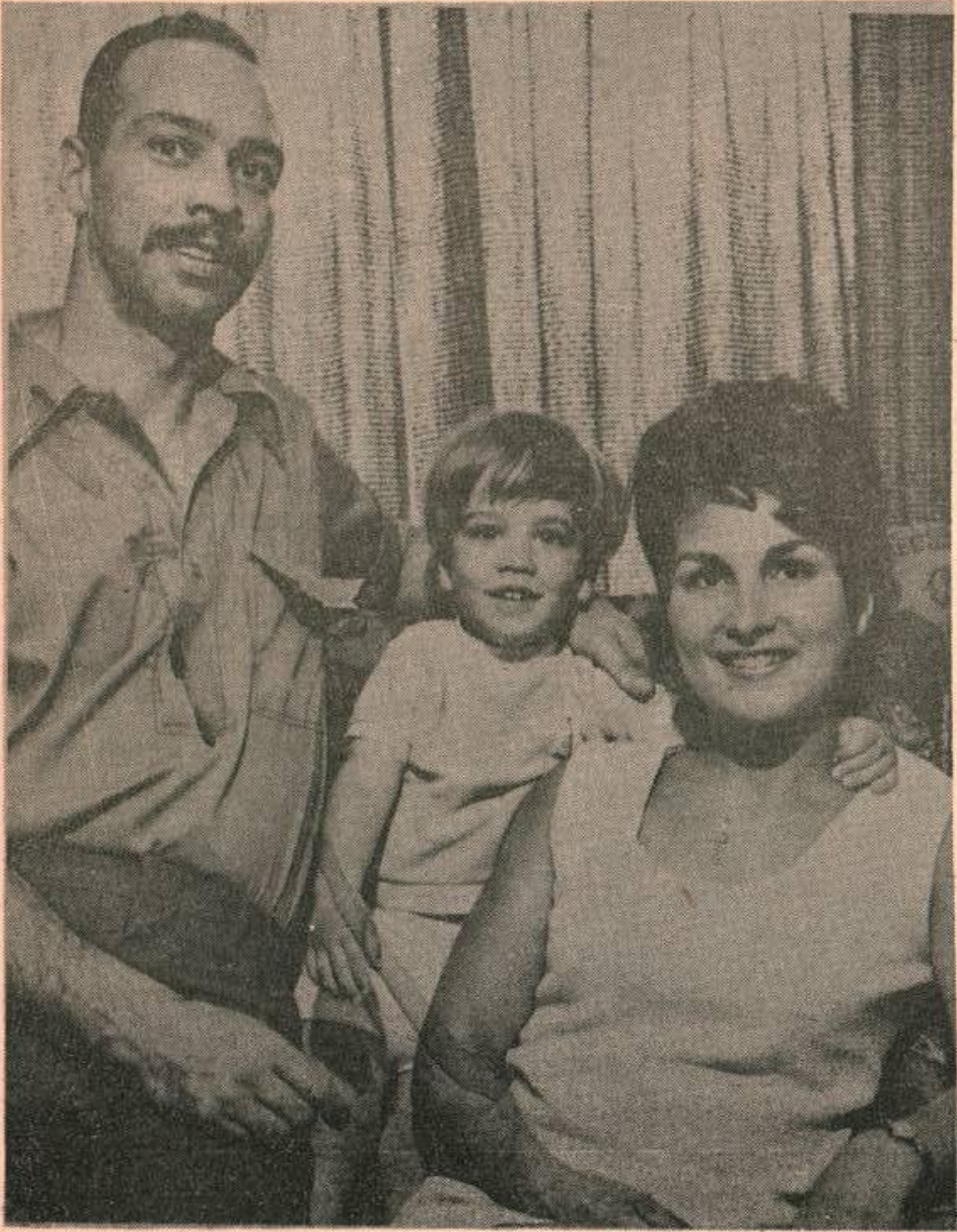
**MON.-FRI. 5PM TO 10PM
AND SATURDAY 10AM TO 6PM**

77 1/2 2nd Ave, Gimli 642-8138

Steam Iron or Electric Kettle giving you problems with the hard water? See our answer to this, at our shop.

MEET YOUR NEIGHBOUR

ARNOLD B. OLSON



CAPT. and MRS. ROBERT OLSON and SON

The moving camera this week turned up at the home of Capt. and Mrs. Robert Olson and Son at 59-6th Ave., Gimli. Bob joined the R.C.A.F. in Vancouver in 1963 and received his pilot training in Centralia, Penhold and Gimli. After receiving his pilot wings in Gimli in Nov. 1964 he proceeded to the C.F. 101 O.T.U. in Bagotville Que. where he met his lovely wife Cheryl. Prior to returning to Gimli in Jan. of this year, Bob and Cheryl enjoyed four years with 409 Sqd. in Comox where their son Steven was born in May 1968.



MR. and MRS. PAUL OLSON and FAMILY

Still more Olsons. This time Paul and Margaret who reside at 63-1st Ave., Gimli. Paul owns and operates Dockside Fish Products in Gimli, and, other than a three year tour with the Airforce during World War II, has been a fisherman all his life. Five growing youngsters keep Margaret busy around the house and she looks forward to the occasional weekend camping trip. The Olson children are Ken (18), Karen (by far the prettiest, 15), David (14), Kris (10) and Robert (who plans on being the first Canadian on the moon, 12).

Mac PHERSON STABLES

HORSEMANSHIP and RIDING CLASSES

JUNE 29 to AUG. 21

Morning	10 3-HR HORSEMANSHIP CLASSES	\$25.00
Afternoon	10 1-HR PRACTICE RIDES	\$15.00
Evening	10 1-HR RIDING LESSONS	\$25.00

All rates include the use of a horse

FOR FURTHER INFORMATIN PH 389-5576

OR write MacPHERSON STABLES, Gen Delivery, WPG BEACH.

LAKEVIEW Coin Laundry

& DRY CLEANING

66 First Ave.

DANCES, BANQUETS, PARTIES, WEDDINGS



*Men of Note
Orchestra*

Jim Glover,

Gimli - 642-8167 or Loc 143

CHUDD & SONS

Gimli's CHRYSLER Dealer

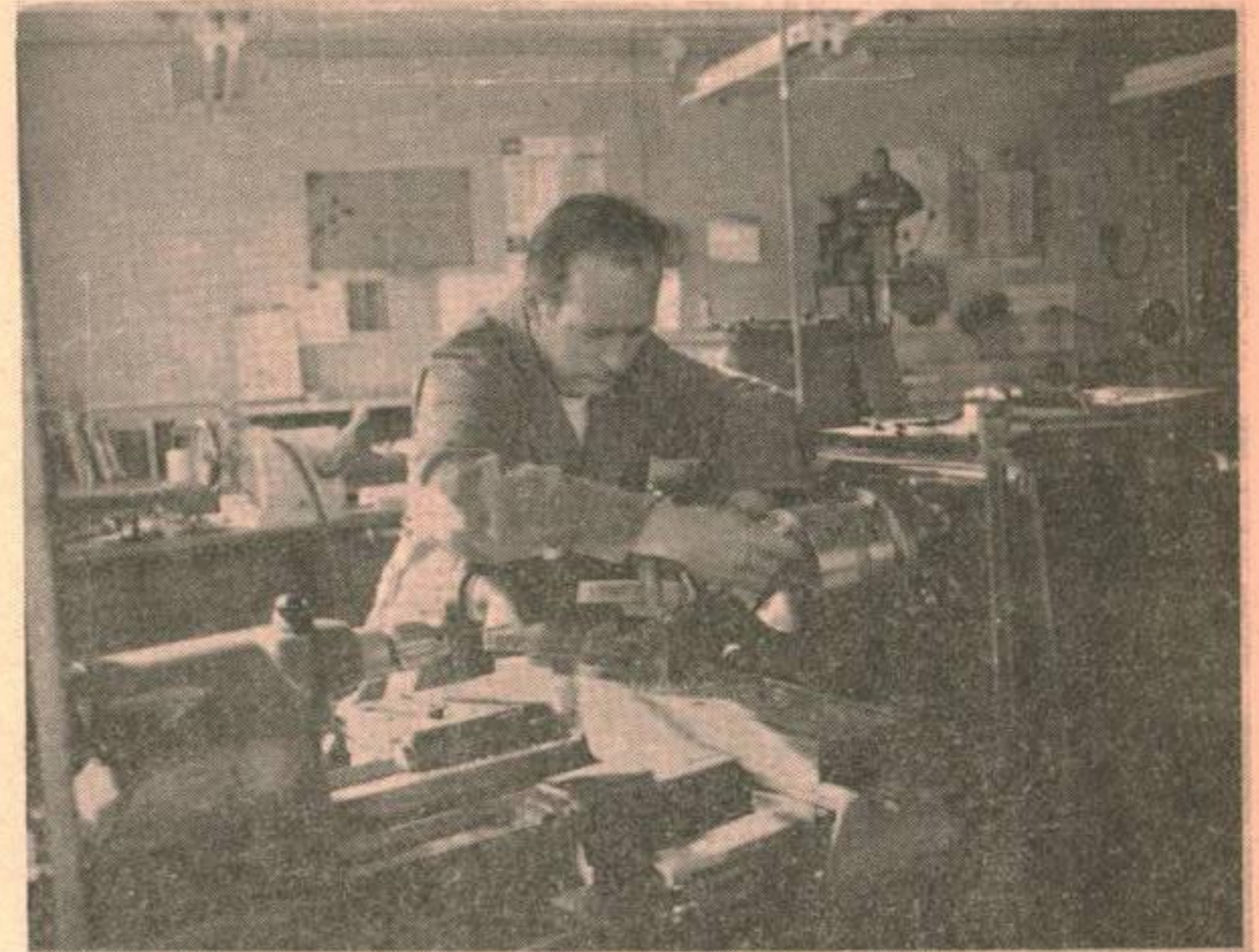
SHELL oil products

-642-5329

Meet the Men on the Front Lines



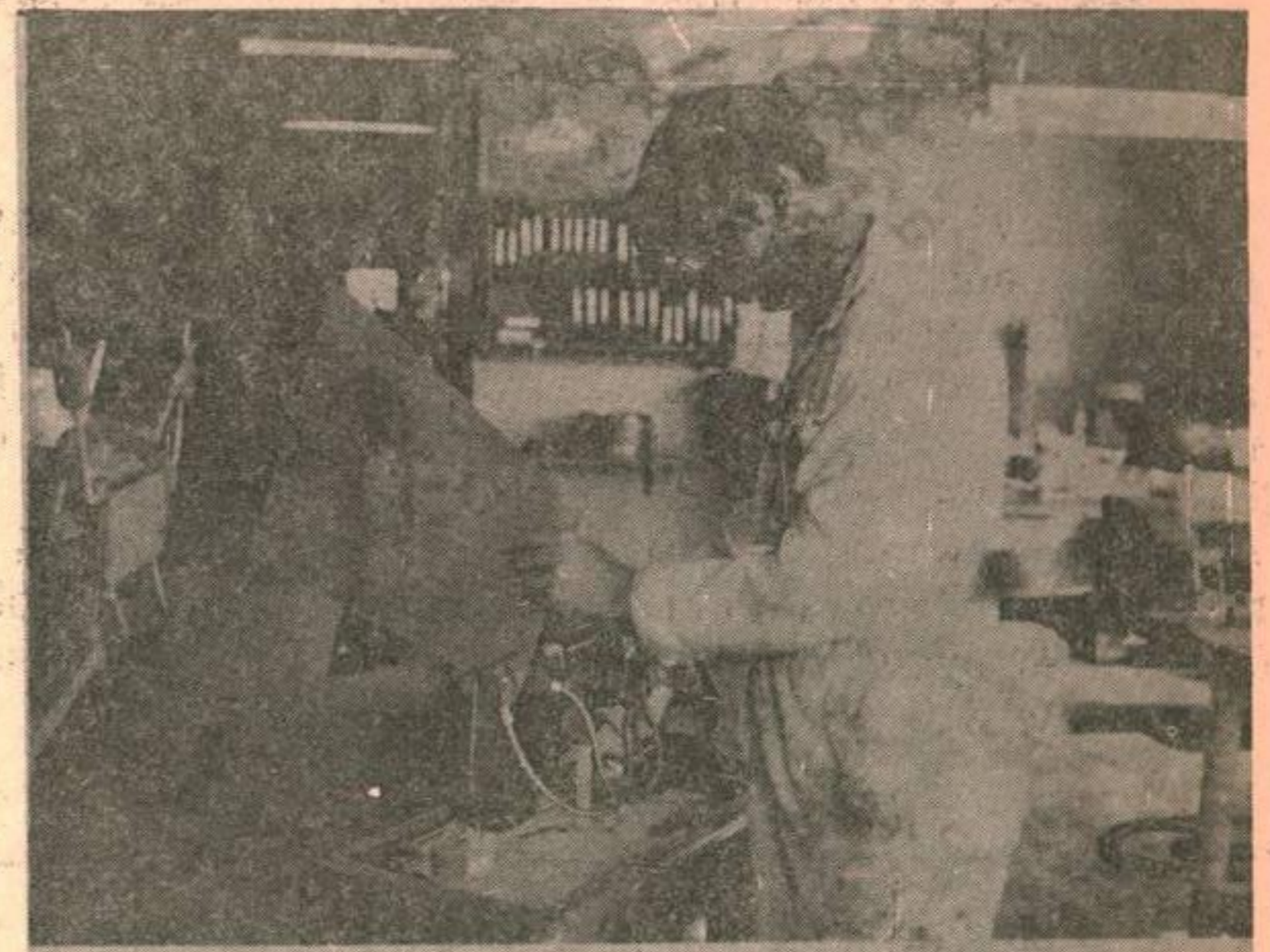
#1



#4



#2



#5



#3



#6

BASE WORKSHOPS

Few sections on the Base conduct as varied a program as Base Workshops. They are concerned, basically, with the support of the flying program, however this duty has many facets. Simply, one might say that workshops conducts modifications and repairs to existing hardware and fabricates parts from raw material. There is not a section on the Base that at one time or another has not depended on workshops to perform these services.

The shop itself is broken down into five basic sections which consist of welding, metal working, machining, refinishing and carpentry. Since many projects require different trades for their completion, the sections operate under one work control centre.

The Welding Shop:

There are three main types of welding conducted in this shop. Most people are familiar with oxy-acetylene and arc welding having seen these types being used commercially, however the T.I.G. technique might not be so familiar. Tungsten inert gas welding uses a flow of inert gas around a tungstenelectrode fed through a water-cooled cable. This type of weld is used mainly with aero-engine components, intricate parts and metals parcular to the aircraft trade.

Each year the welders in the shop must demonstrate their proficiency in welding and must send welded sample for testing to the Material Test Laboratory in Hull, Quebec. If the specimen passes a series of rigorous tests the welder is issued with a ticket, valid for one year, in that type of welding.

The Metal Working Shop:

These industrious men produce modifications for aircraft and supply many of the handy gadgets used for aircraft maintenance and by other sections around the Base. They must be proficient in producing galvanized piping, duct work, reducers, funnels, drip pans and fasteners and fittings for aircraft. These men do all the cutting and fitting of fuel and hydraulic lines for vehicles as well as aircraft.

The Machine Shop:

The machine shop boasts of one of the best equipped workshop that exists in this area. This shop produces all of the close tolerance machine work done for the Base. It is a facinating sight to see - a rough piece of metal end up a smoothly polished accurate piece of work. From the tiniest aircraft instrument screw to the largest driveshaft in the Sewage Disposal Plant, all are done with professional techniques.

The Refinishing Shop:

If you have wondered who put the French markings on our aircraft it was these boys. Operating out of No. 5 Hangar they are responsible for the decals, markings, pin bags, blind flying hoods, map cases and similar articles on the aircraft. As well, a complete paint shop runs in this section used for spray painting aircraft parts.

The Carpentry Shop

For examples of the work turned out by the carpenters, have a look around your own shop - that card holder in the corner - your log book holder. Along with these useful articles the shop turns out forming blocks for the metal shop to shape metal panels.

As they say in the business - we can mend anything from a broken heart to the crack of dawn.

1. Sgt. Holmes and WO Johnston discussing the workload for the day.
2. Pte Lunn from Windsor, N.S., putting the final touches on a T-33 pitot cover.
3. Cpl Hanlan measuring accurately the components required for fiberglass coating.
4. Cpl O'Donnell checking the tolerances on a lathe.
5. Pte David dimpling a hole for a T-33 panel.
6. Cpl Affleck looking over the blueprint for a component to be manufactured

-Framfotos



The Cobra's Comment

Congratulations to Bill Boucher and his new wife who were joined by the thread (chain!) of holy matrimony yesterday.

The Cobras wish "bon voyage" to Jerry Demers and his wife. Jerry is really going to have to watch that waistline with all that French cuisine (sorry boss, and German cooking too!).

THE #1 FTS COBRAS

2-1967 CHEVY

1/2 TONS

-Long Wheel Base

-Tires Like New

-4 Speed Transmission

YOUR CHOICE

\$1187.00

GIMLI MOTOR PRODUCTS

TEL. LOU AT 642-5133

MEET YOUR STATION TEAM

KEN TAPPAY



RICK BUCHANAN

Rick Buchanan has to be one of the top athletes and well known sports enthusiast in the Interlake area today. To hockey and fastball fans, this talented competitor is CFB Gimli's Mr. Howe on skates and Mr. Mays on the ball diamond.

At present Rick plays left field for the CFB Falcons and has to be rated as the club's most valuable player by fellow team mates. Base Gimli's chances of capturing the Zone III fastball championship has to be increased with Rick's presence in the line up as his speed in the outfield and leadership in the batting department all have contributed towards the team's second place standing in the Interlake fastball league.

Our talented player is another member with the Base team who hails from the Maritimes. Rick was born in the small community of Amherst, Nova Scotia on June 11, 1948. Sports first became of interest to Rick while attending Fredericton High School. Little league baseball and bantam hockey were among his favorites.

On completion of high school, our pictured player was employed at a licence plate factory in Amherst before deciding to join the service. It was at Halifax in September 1967 when Rick said good-bye to civilian life. After basic training and weeks of studying in the Supply Field at Camp Borden, Rick's first transfer brought him here to CFB Gimli in April of '68.

Barrack block life ended quickly for this airman when an ex-classmate attractive Miss Gail MacKenzie, followed Rick out West. It was a High School romance for Gail and Rick as Rick used to tantalize Gail who sat directly in front of him throughout school. However, Gail worked in a medical clinic in Winnipeg for almost a year before coming up to Gimli to take on the Buchanan name. The Buchanans were married on November 1, 1969.

Rick's popularity throughout the Gimli area is mainly due to his aggressiveness and skating ability during hockey season. The past two winters Rick donned a Gimli Wolves hockey uniform and became a key figure in the Wolves successful finish in the Interlake hockey league. Rick was also among the squad which travelled to Moose Jaw last March to represent CFB Gimli in the Zone III hockey trials.

During leisure hours the Buchanans enjoy taking in movies, or playing tennis in the summer. When asked about his favorite food, there was no hesitation when he answered "Steak"

'DO YOU KNOW YOUR BASEBALL?'

-L.J. Burns

Bill Consolo is listed as lead off, man, at the last minute, however, the manager of the visitors decides he should use John Schaive, a rookie. The rookie gets up to bat before the umpire is notified of the change and promptly slashes a line double to center field. The defensive team manager came out of the dugout claiming that Schaive

GIMLI AUTO BODY

Do you want to get away from

WE SELL BOLER Trailers

SURF TAMER Boats

EVENRUDE Outboard Motors

the heat?

MONTE CARLO NIGHT

June 26, 8 pm

Upstairs at

Canadian Legion

Branch 182, Gimli.

Refreshments
will be served

'Four Seasons'

TRAILERS

Firman Brothers

Bus: 642-8857

Res: Paul Firman 5007

"BLUENITERS"

ORCHESTRA

WINNIPEG BEACH 389-5512

or LOC 35 SGT RAUSCH

Saturday, June 27
1:30 p.m.

Bake Sale to be
held in Lower
Auditorium of
Lutheran Church
3rd Ave.

Sponsored by the Lutheran
Womans Association

DO YOU KNOW YOUR BASEBALL?**CONT**

is an improper batter inasmuch as his name does not appear in the line up. The manager contends that the proper batter should be declared out and Schaive taken off base.

Quest: How would you rule?

Ans: Let Schaive remain on second base, and the game continues with no one out. Failure to inform the umpire of the substitution is likely to cost the visiting manager some but an unannounced substitution is not otherwise punishable.

Top of the 8th inning, the visitors are leading 6-1. The first batter opens with a single to left field. The next batter lifts a pop up to 2nd base, tosses his bat down in disgust and jogs down toward 1st base. The second baseman gets under the ball. Noticing the batters lazy pace, he traps the ball cleverly and throws to the first baseman. The first baseman tags the runner, standing on the bag then steps on the bag just before the batter arrived. The team in the field claim a double play, but the visitors claim that the runner standing on a base cannot be put out in this situation.

Quest: How would you call it?

Ans: It's a double play. Because a force play was created when the second baseman trapped the ball, the runner is no longer entitled to first base and is liable to be put out.

THE BOMBERS ARE HERE
PRACTICES @ 10 am
2 pm

FASTBALL**GIMLI FALCONS 13 - LOCKPORT JETS 1**

Last Wednesday the Base fastballers made it six victories in a row when they humiliated the Lockport Jets 13-1. Tom Wadey scattered three hits during the first five innings and allowed Lockport their only tally, an unearned run in the 2nd inning. Paul Chellew finished the pitching duties for the Falcons in fine style by retiring the first five batters before giving up Lockport's fourth and final hit. Pete Batchelor led the Falcons at the plate with a three-for-three attack. The airmen started their rally in the bottom of the 3rd inning when playing coach Tappay, batting for Roemer, hit an inside the park home run to score the Falcon's first run. A walk followed by three hits pushed three more runs across the plate before the inning was retired. The Falcons matched one of softballs rarities in the 4th inning when all nine players crossed the plate before the Jets could retire a Falcon. Lockport's first sacker, MacDonald, was the only threat at the plate as he collected two of the Jets four hits. The CFB Falcons are on the road for their next three games but hope to have an exhibition game either this Friday or Saturday with the Molson Canadians from Winnipeg or else the Base intersection All-Stars.

GEORGE'S TV 70

RADIO, TV,

HOME APPLIANCE SERVICING

Phone 642-8138

GIMLI CAFEVISIT US FOR
CHINESE SPECIALTIES.

WE HAVE

ORDERS TO TAKE OUT.

CENTRE STREET

642-9278

Kardy's HARDWARE

Your FIRST STOP STORE for

HOUSEWARE-GIFTWARE-PAINT

642-8838

**GIMLI HOTEL
(The Whitehouse)**OVERNIGHT ACCOMODATION
REASONABLE RATES*'The Casanovas'*
ENTERTAIN FROM
29 JUNE to 4 JULY**Ted's Solo**

Specializing in:

— MEATS —

— GROCERIES —

— FRUITS —

WE DELIVER

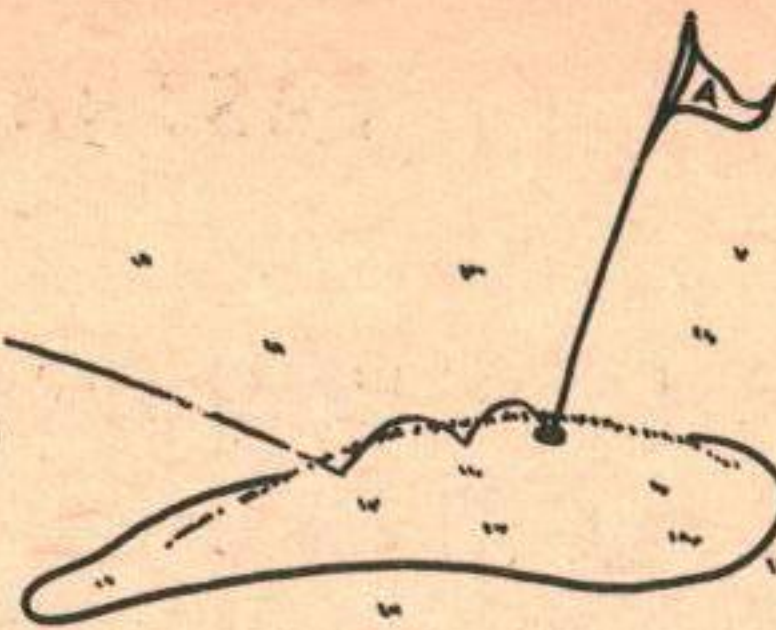
642-5337

'GOING ON VACATION??'*Come in and have your**BRAKES and FRONT-END checked.***WHERE? ———****BASE AUTO CLUB!****INSECT STRIPS AND CHARCOAL NOW AVAILABLE!**



THE 10th HOLE

Aspen Park Golf Club



On Saturday 20 June 1970 the A.P.G.C. played host to the Junior Rank Club who were sponsoring a mixed tournament for the members. The event was well attended with the scores being respectable for those who kept their cool and into the double figures for those people who spent too much time at the refreshment stand -- (Yours Truly).

Prizes were won by Rod Olberg for the men's low gross and Guy LaFortune for the low net. The best golfer for the day on the women's side was Jasmine Murtough with other prizes being won by Nick and Jane Jaycaj, Betty Snutch and Roger and Mrs. Blais.

Pro Tips

Swing Club head Back Level to Ground

Properly taking the club head back at the beginning of the swing requires relatively little skill or coordination, yet many golfers show serious faults in this area.

The main problem stems from lifting the club head straight up instead of actually swinging it away from the ball. At the start of the back swing the club head should ride level with the ground, to insure a nice wide arc and freedom from jerkiness. A lifting action restricts the body turn and forces the hands into an improper position at the top of the back swing. As a result the club head will come down into the impact zone in the "across path" which will cause a slice or pulled shot.

A feeling of relaxation will do much to thwart any tendency to lift the club head. Concentrate on swinging the club head gradually up and away and you will avoid any shortcuts that spoil a proper swing path. However, do not over-correct the lifting tendency when you bring the club head back. If you try to keep the club head low for too long, your body may be forced to sway to the right and so disrupt your swing path.

Winter Rules

Unless proclaimed by the local officials, there is no such thing as winter rules. Rules 16 and 17 specifically dictate that the ball must be played as it lies, and that improving the lie or stance is prohibited. The player is not necessarily entitled to an unrestricted swing and he may not bend tree limbs to give himself room, except in the natural motion of taking his stance and swinging. The club may be grounded only lightly, and must not be pressed into the ground as many players do in the rough in order to make the ball stand up in the grass. The penalty for breach of rule is two strokes in medal play and loss of hole in match play.

DUFFERS CORNER

Unleashing the fury of my swing, I'm really going to drive that thing.

Hark! Again those rattling sounds.--

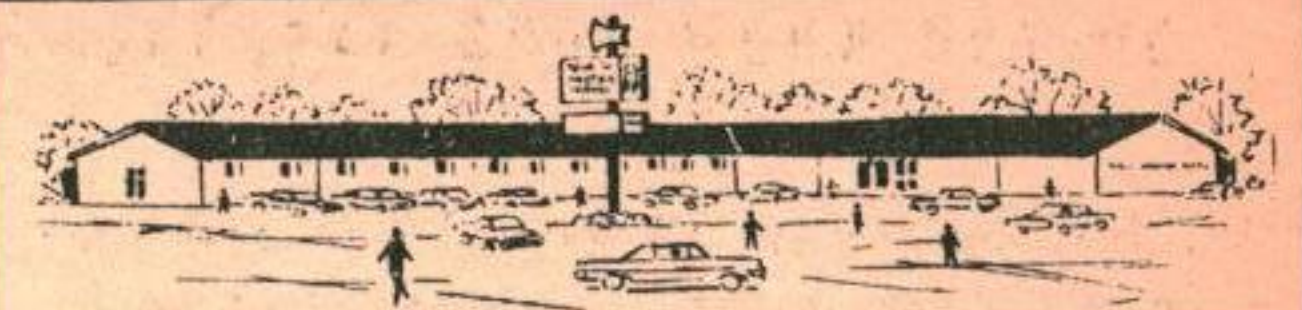
I've hit the blame ball out of bounds.

GIMLI DRIVE INN

NOW OPEN
TO SERVE YOU THIS SUMMER
TRY OUR -Chili

-Tubby Chicken
- Hot Dogs & Nips
- Deep Fried Perogies

642-8355 FOR PICK-UP ORDERS



Viking Motor Hotel LTD

PHONE 642-5181

P.O. BOX 131

- 21 Units -
- Air Conditioned -
- Cocktail Lounge -
- Sauna Baths -
- Dining Room -
- Banquet Facilities -
- Beverage Room -

SMORGASBOARD Sunday

BAND Wed, Thr, Fri, & Sat.

Exotic Dancer Monday & Tuesday



Phone for
reservations



Saving money on food?

- ✓ CHECK OUR WEEKLY SPECIALS!
- ✓ CHECK OUR REGULAR PRICES!
- ✓ CHECK OUR MEAT BARGAINS!

Stock up on frozen foods and
meats at reduced prices.

TIP TOP
CLOVER FARM

PHONE US AT 642-5418

ASPEN PARK GOLF CLUB



HIS n' HERS Mixed Open July 1st

TWO BALL FOURSOME

TEE OFF 8:30 a.m.

**Register
at the pro shop.**

**Only \$1.25
plus green fees**

A HIDDEN SCORE PLUS -----

-----MANY MORE PRIZES!

ALL-MALE OR ALL-FEMALE TEAMS WILL BE ACCEPTED.



Dick Arnason (seated) views the finished product of a miniature Viking Statue. Dick was one of the driving forces behind the contraction of Gimli's famous Viking Statue and this small replica is now being produced in limited quantities locally by Fred Rankin (standing right). Fred was told that he would have to make the miniature from something solid such as wood or stone before a ceramic mold could be cast. However, Don Campbell (standing left) was able to cast a mold from a miniature Fred made from a special type of plasticine. Don, who does ceramic work in Winnipeg, then sent the finished mold to Gimli where ceramic miniatures are now produced.

Feel like Acting ?

CASTING CALL

Gimli residents required to perform in the premiere production of an original play by a live Icelandic Canadian Playwright.

Casting at 2:00 p.m. Saturday, 27 June at the George Johnson Gymnasium, Gimli. There are also four teenagers needed.

This play is for presentation this Centennial year during "The Icelandic Festival of Manitoba".

For further details contact Cecil Anderson (Vice-Principal of the elementary school in Gimli)

EVERYONE WELCOME

- THANKS -

The Junior Ranks Wives' Club would like to thank those who participated in making our Bake Sale a success. Special thanks to the Manager of the Gimli Tom Boy for his kind cooperation. Also a special thanks to Mrs. Pike for the donation of the beautiful decorated cake.

Anyone interested in having a cake decorated for a special occasion, please contact Mrs. Pike, 20 Willow Dr. Phone - 642-5274.

VIKING PHARMACY

PHARMACISTS: Ernest Stefanson, Russ Keeler

PHONE 642-5504

Say 'CHARGE IT' with your GM charge card.

Emergency phone 642-8359 642-5253

We Deliver

LADY PAT Hairspray
REG 1.49 **Special 1.09**

WILKINSON
SWORD BLADES
5's for 49¢

JO-CUR Hairset
8³/₄ oz., REG 49¢
Special 35¢

V05 SHAMPOO
3.5 oz., REG 89¢
Special 25¢

EFFECTIVE JUNE 29, FOR YOUR SHOPPING PLEASURE,
OUR STORE HOURS WILL BE--
MONDAY TO SATURDAY 9 am - 9 pm SUNDAY 12 Noon - 7 pm.

COLGATE Toothpaste
MFP KINGSIZE
SPECIAL 79¢

PALMOLIVE Rapid Shave
KING SIZE, REG 1.25
SALE 89¢

GIMLI FLYING CLUB

Hosts Fly-in

Sunday June 21 saw a unique event at CFB Gimli. The Gimli Flying Club and the Base hosted a civilian fly-in and open house at the club.

The warm sunny weather brought more than 30 private aircraft to Gimli from as far away as Thunder Bay, Ont. and Kamloops, B.C. Aircraft began arriving shortly after 8:00 a.m. and following a welcome to the Base, pilots were treated to a complimentary breakfast by the Gimli Flying Club.

Both visiting crews and open house guests enjoyed flight line tours, a T-33 static display, a Gimli Flying Club flypast, a T-33 flypast and a flying display by the Winnipeg Radio Control Club.

Trophies were presented to pilots for first arrival (early bird) touchdown on a hidden spot on the runway and touchdown at a hidden arrival time.

Many visitors took advantage of familiarization trips offered by the club and gained a birds-eye view of the Gimli Area.

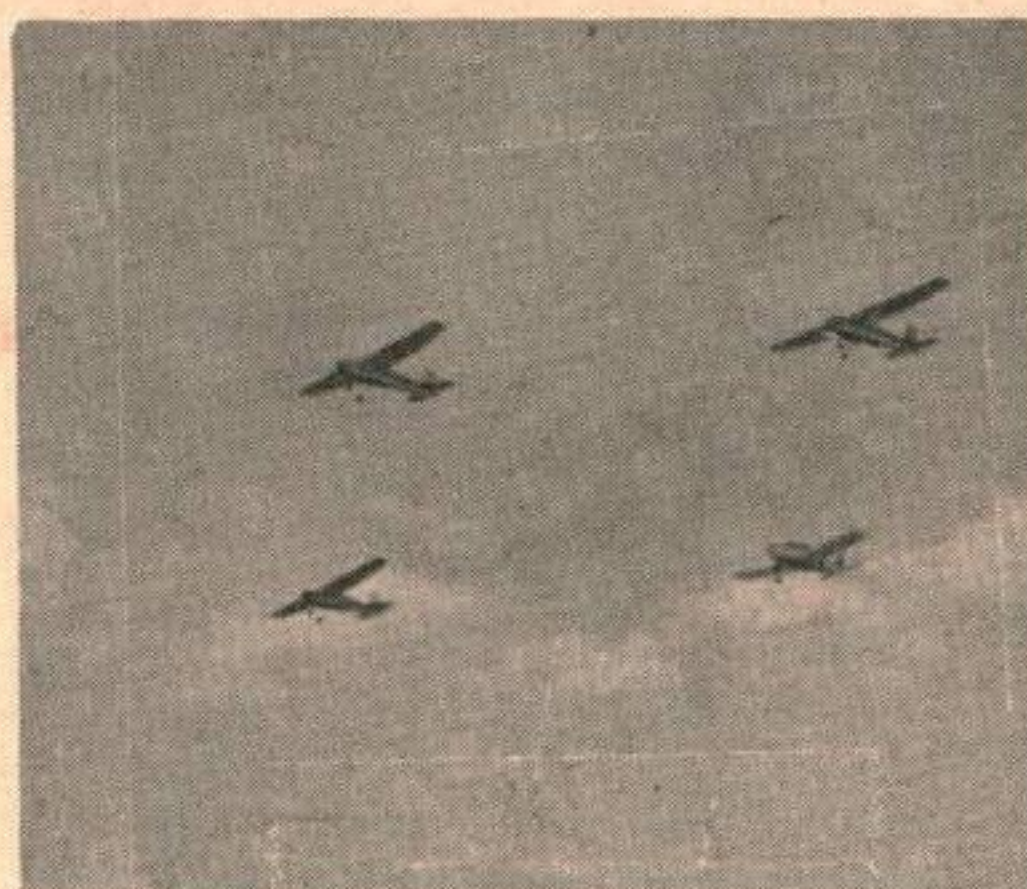
The Gimli Flying Club is organized to promote private flying in the Interlake area and is a civilian club open to everyone. It currently operates four aircraft from club rooms in number one hangar on the Base. The club trains pilots on the DOT approved private and commercial courses as well as providing recreational flying for its members.

Dave O'Blenis.



Dave O'Blenis presenting trophies to (left to right) David Foster of the Thunder Bay Flying Club for the time landing, Herb Williams of the Lyncrest Flying Club who hit the spot landing within two inches, and Les Aspin of the Winnipeg Flying Club who won the early bird award.

-Framfoto



The "big four" of the Gimli Flying Club in "close!" formation. Three Cessna 150's lead with the Cherokee in the "box". -Framfoto



A view of the flight line showing some of the 30 aircraft that attended the Fly-in on Sunday June 21.



Eric Healey (the prop smasher) and his "Das Ugly Strik". Eric is o/c morals of the Winnipeg Radio Control Club.

-Framfoto



Bill Smallwood, Scale Aircraft Director of the WRCC and his Stearman PT-17

-Framfoto



Gerry Fingler, vice president of the Winnipeg Radio Control Club and his Douglas Dauntless.

-Framfoto

GIMLI FLYING CLUB



3 Cessnas
1 Cherokee

D.O.T. APPROVED
*Private
Pilot Training*

↑

COMMERCIAL
*Pilot
Training*

← INSTRUCTORS AND AIRCRAFT ARE AVAILABLE
EVENINGS, WEEKENDS AND HOLIDAYS. →

CONTACT OUR MANAGER

Box 122, C.F.B. Gimli - 642-5151, Local 120R3

Sir:

After last weeks rather poignant essay as to the merits or whatever, of the Evergreen, your writer feels a few weeks of not so heavy material is in vogue. Therefore I shall now recite the life story of a Junebug. No, not really, but speaking of June, do you think it suffice to say winter is over? Summer is finally upon us! With the last month being one of interrupted sun, I think we are safe to say "Get out the Bar-B-Que Pad, up with the swing set, down with the Christmas lights, Onward!" But have you ever noticed the change that takes place when summer is nigh? A rather quiet Airforce town takes on a new face---it becomes a haven for sunlovers, football fans, golf fanatics and all in all, a different place completely.

With this influx of pleasure seekers one cannot help but begin to see prices slowly going up, and up, and up! Neither can one help but wonder why?! We who live here all year round are affected enough by staggering prices when the calendar reaches our paydays, but gads, still more????? You can't convince this writer that in less than a week a tin of vegetables goes up eight cents or a package set of juices is 13 cents less in a neighbouring town, and I don't mean Winnipeg, just because the market prices are fluxuating. Really!!! Let me not belabour the subject, but suffice it to say that shopping in this neighbouring town might save the consumer anywhere from six to eight dollars on a fifty dollar order of groceries, and this is not a discount store, merely a grocery store. Sure is hard to understand! Nonetheless I promised not to get "heavy" again for at least a week so to change the subject.

Speaking of golf courses, and I was, wasn't I? Have you noticed how our new course is shaping up? With the help of several "volunteers" and the grace of the dear weatherman, the new range should be opening shortly but with one unfortunate sore thumb...here I go again. This of which I speak, is the apparent lack of consideration some young folks are showing when it comes to playing on the golf course. I wonder if these children realize the potential energy of a golf ball in flight? This past week I had several occasions to witness children nearly hit with golf balls, while the rather panic struck golfer was yelling "Fore, Fore" He could have been yelling anything for all they knew, or cared. I hope for these youngsters sake the parents do caution them to the dangers of playing on a golf course before there is an accident.

But now back to my subject....summer and all its' beauties. This writer hopes you have a safe summer. Watch those food prices....and spring golf balls and till next week. Yours, Sam.

Farewell With Thanks

It is with heartfelt thanks and gratitude that Tillie and I wish to express to the WO/SGTS Mess for the wonderful retirement dinner, to the members of the Base Band and their wives for the greatest ever of surprise parties, to the I&E section for their send off (HIC) and gift. A special thanks to the Base Orderly Room and Accounts section for their help and assistance in preparing us for civvy street.

With regret we say farewell to the Service and our many, many friends and Thank You for all you have done when you were most needed.

Jack, Tillie and Jill Bessey.



NO
HIDDEN
CHARGES

NO
PENALTIES

- ATTRACTIVE SAVINGS PLANS
(Doubled in event of Death)
- TERM DEPOSIT CERTIFICATES
(no penalty for premature withdrawal)
- FREE CHEQUING FACILITIES
- CHARTER FLIGHTS
- LOW COST LOANS
- INTERNATIONAL CREDIT CARDS
(including Travellers Cheques)
- RETURN OF PROFIT TO MEMBERS

ASTRA CREDIT UNION

Gone But Not Forgotten

John Kenneth Galbraith, during the days of the 1929 stock market crash, said that "while it is a time of great tragedy, nothing is being lost but money.

Unfortunately, few of us today can afford to lose money, regardless of the circumstances.

To avoid the problem in the first place, the Bank of Montreal has an uncomplicated way of safeguarding the money you can't afford to lose. The bank provides a night depository service that eliminates the danger of handling large amounts of cash while

the bank is closed. Over long weekends, especially, night depository service can play a vital role.

So, to make personal or business deposits any hour of the day or night, seven days a week, to deposit the day's receipts, to make payments on loans -- safely and conveniently -- the Bank of Montreal's night depository service makes good sense.

Ken Bettsworth, manager of the Gimli Bank of Montreal has all the information you'll need about this vital service.

BANK OF MONTREAL

**NORTH AMERICAN
LIFE ASSURANCE COMPANY
A Canadian Mutual Company**

Providing programing,
Consulting, and Service
for Life, Auto, Fire
and General Insurance.

Visiting Base Library,
CFB Gimli, on Mondays.

G.F. (Kelly) Laliberte

I. (IKE) Chamish

219 Kennedy St.
Winnipeg, WH. 3-1526.

Water Safety Program

SCHEDULE for WATER SAFETY Program - June 29 to July 17, 1970

0800-0900 Senior 1115-1200 Junior #1 1445-1530 Junior #2
 0900-1000 Intermediate #1 1315-1400 Beginner #1 1545-1630 Beginner #3
 1015-1115 Intermediate #2 1400-1445 Beginner #2 1630-1715 Beginner #4

Gerald Watts - Instructor. NOTE: There will be no lessons on Wednesday 1 July 1970.

Junior #2

Lorene Cherniak
 David Cherniak
 Suzanne Fontaine
 Shelly Lugg
 Kathy Mathes
 Nancy Naylor
 Carl Webster
 Greg Brown

Beginner #3

Peter Anslow
 Jack Anslow
 Cheryl Anderson
 Ricky Popowich
 Cheryl Popowich
 Darlene Webster
 Andy McCarthy
 Lee Stephenson
 Jean Anslow

Senior

Dianna Andrew
 Theresa McInnis
 Anne McInnis
 Danny McInnis
 Andrew McInnis
 Connie Hall
 Janice Aldwinckle
 Carolyn Aldwinckle
 Diane Aldwinckle
 Berit Brown
 David Dagenais

Intermediate #1

Terry Pearce
 Bernard Small
 Corine Small
 Vivian McInnis
 Nicky Auger
 David Chambers
 Blaire Chambers
 Allen Krezanski
 Marcia Corkum
 Patti Corkum
 Mark Webster
 Terry Burns

Intermediate #2

Judy Lugg
 Brian Lugg
 Wayne Lugg
 Barb Whitehead
 Jim Whitehead
 Alexa Plewes
 Tim Gottfried
 Vernon Gwin
 Tammie Wilson
 Leane Wilson
 Bob Wild

Beginner #4

Paula McPhee
 Karen McPhee
 Paul McLaughlin
 Kell Everett
 Perry Plewes
 Sheri McBride
 Scott McBride
 Andrew Nickerson
 Bill Sparling

Junior #1

Paula Boylan
 Eileen McInnis
 Gerard McInnis
 Michelle Herrick
 Tana McPhee
 David Gagnon
 Dale Anderson
 Brian Orford

Beginner #1

Jeff Malcomson
 Maureen Fehr
 Angela Wright
 Liane Whosek
 Glen Whosek
 Cheryl Sheperd
 Vaughn Hunter
 Wanda Hunter
 Gary Orford
 Denis Dagenais
 Danny Dagenais


Beginner #2

Margaret Pearce
 Derek Andrew
 Lorrain Boylan
 Royce Chamber
 Christine Herrick
 Greg Herrick
 Kevin Dietrich
 Kent Dietrich
 Kelly Squires

BASE LIBRARY - SUMMER HOURS

Effective 28 June 1970, the Base Library will be open only during the following hours:

Monday - Thursday 1300 to 1700 hrs



TOM-BOY

WHERE FRIENDLY PEOPLE SAVE YOU MORE!

140Z. MALKINS FANCY

PEAS + CORN

MIX OR MATCH 5/1.00

MEAT MAKES THE MEAL

FRYERS

UTILITY GRADE

33¢ LB.

SIDE BACON

SEVEN FARMS 89¢ LB.

TOMATO JUICE

(MALKINS)

48 oz. 3/1.00

BEANS + PORK

MALKINS 14 oz. 7/1.00

BANANAS

GOLDEN RIPE 6 LB. \$ 1

POTATOES


NO. 1 NEW WHITE 10 LB. BAG 89¢

FRUIT PUNCH

ASSORTED FLAVOURS 6oz. 5/1.00

GIMLI TOM-BOY

Prices effective June 25, 26, 27
We reserve the right to limit quantities



TOM-BOY

Westfair Associate

NOTES FROM GOULDING

KINDERGARTEN GRADUATIONS

Tuesday, June 16, in honor of this being Manitoba's Centennial Year, Miss Thordarson, the Kindergarten teacher, held graduations for each of her morning and afternoon classes. Dressed in capes and mortar boards, the students put on the following program for their parents:

- The Manitoba Centennial Song
- Several French Songs
- Rhythm Band Selections
- Choral Reading
- Puff the Magic Dragon
- Hymn - O Father, Lead Me Day by Day.

Mr. Hammond then welcomed the students to Grade 1 and presented them with their promotion certificates. Lunch followed and then the students bade farewell to their most capable teacher, Miss Thordarson, and departed, eager to enter Grade 1 in the fall.

SUMMER SCHOOL REGISTRATION

The PMQ Council Summer School will operate at the Goulding School in Aspen Park from 6 July to 28 August. All dependant children from 5 - 8 years of age are welcome. The hours will be 09:00 to 11:30 a.m. Monday to Thursday. No transportation can be provided.

Registration for all who have not yet registered will be 09:30 to 11:30 a.m. Friday, 3 July at the Goulding School. Registration for part of the summer will be welcomed.

STARDUST PONY CLUB

On June 16 a meeting was held at the home of Erin Dann, many important matters were brought up.

It was decided by the members present that the 4-H'ers will act as "clean-up" committee, parking attendants, and will help organize entrie at the Lakeshore Light Horse Association show. The show will be held at MacPherson's Stables on August 15.

Vague plans have been laid for a gymkhana to be held by the Stardust Pony Club sometime in Aug. or Sep. It was suggested that pony club in the district could be invited to participate. More definite plans have yet to be decided upon, and further discussion will take place at the next meeting.

Members are reminded to meet at the High School at 9:00 a.m. Saturday, June 27 to catch the bus taking those interested to Manisphere to see the Musical Ride. Please remember to bring your lunches and \$1.50 for admission.

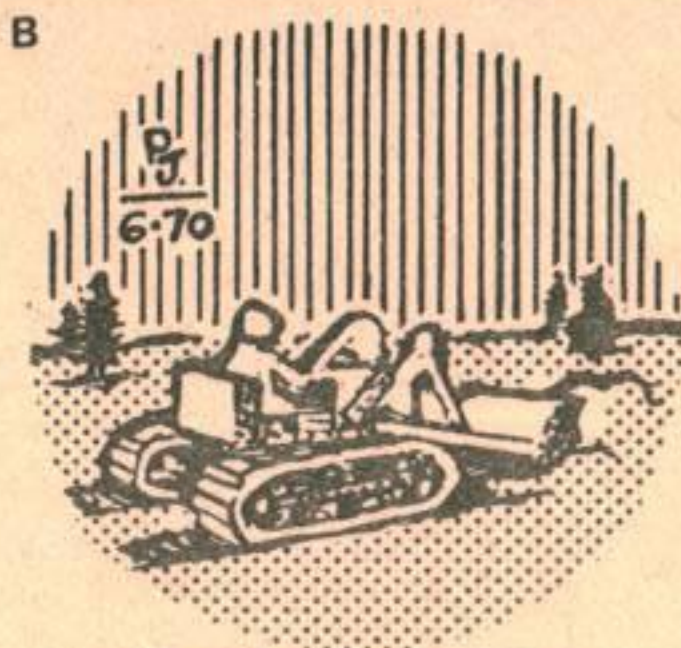
The next meeting will be held at Greenberg's Stables on Tuesday, July 14 at 7:30 p.m.

Club Reporter, Terry McNamee

PRIORITY FOUR SPACE SCARCE

SFs one, two, three and four, Yukons and 705, 706, 707 and 708 (CC-137s) all coast to coast; Cosmopolitan flights 30 -- Trenton - St. Hubert, SFs 32-33 -- Ottawa - Edmonton via North Bay, Winnipeg and Moose Jaw and return and SFs 34-35 -- Ottawa - Trenton and return.

*Your money
at work!*



**\$40,000.00
GOLF COURSE
Moosejaw**

-PSP Newsletter

THE MART

For Sale: Boy's 24" bike
Phone 642-7427

Ace-Tone #8 Musical Organ. Just one year old, barely used, if interested call- Lt. Raymond Dube - Loc. 119 from 08:30 - 17:00 hrs. week days.

For Sale: 200 gallon oil tank \$10.
Phone: 642-5283.

For Sale: Baby's Sit and Snooze car seat. Excellent condition used six months. Original Cost \$22. will sell for \$10. Phone: 642-8386.

For Sale: Carbed in excellent condition \$10. Phone 642-5425.

NURSES AND L.P.N.'S

Needed for summer relief at the Betal Home on 1st Ave., Gimli. Please call 642-5556. Work available from July 1.

Young woman desires employment. Experienced in office work, or will accept other types. Phone: 8304.

TAILORING
MINOR ALTERATIONS & REPAIRS
642-7229

AUTO CLUB - Application forms are now available at the Auto Club for medallion plaques.

**ED MANDRYK C. D.
THINKS MILITARY**

REDUCING TERM FOR 25 YEARS -
INITIAL COVERAGE OF \$40,000.00,
OR \$200.00 PER MONTH FOR 25 YEARS.

20 years old	5.37
25 years old	7.37
30 years old	9.17
35 years old	12.37

OR

INITIAL COVERAGE OF \$20,300.00,
OR \$200.00 PER MONTH FOR 15 YEARS.

40 years old	8.77
45 years old	12.57
50 years old	20.57

THIS INSURANCE IS "NON CANCELLABLE"
AND YOU HAVE THE RIGHT TO CONVERT WITH
MEDICAL FIVE YEARS PRIOR TO EXPIRATION
DATE OF POLICY.



NEXT TIME
YOU THINK INSURANCE
THINK OF
ED MANDRYK C. D.
1831 NESS AVE.
WINNIPEG 889-2928

VISITING BASE LIBRARY
on First & Third Wednesday

Protestant Chapel

Rev. J.S. Cameron
Phone: 156r2

SUNDAY 29 June 1970
10:00 a.m. - DIVINE WORSHIP

THURSDAY

6:30 p.m. - Jr. Choir Practice
7:30 p.m. - Sr. Choir Practice

As Padre Hilton will be on Course from 10 May to 17 July 1970, Rev. J.S. Cameron of St. Augustine's Anglican Church will be replacing him during that period.

R.C. Chapel

OUR LADY OF LORETTO CHAPEL
CFB GIMLI, ASPEN PARK, MAN

Rev. C. Purcell
Phone: 156

MASSSES

Sunday - 9:00 a.m. and
11:00 a.m.

Weekdays 5:00 p.m.

CONFESSIONS

Saturday - 4:00 p.m. - 5:00 p.m.
Before each Mass and whenever you feel like it. We will try to accommodate everyone.

BAPTISMS

By Appointment: Usually on Sunday.

MARRIAGES

1. Give two months notice to your Chaplain.
2. For a Mixed Marriage - four months notice would be preferable since the Non-Catholic party needs to take a few instructions about the Catholic Faith.

C.W.L.

Meeting every third Tuesday of the month, at 8:00 p.m.

ALTAR SERVERS

Meeting every second Wednesday of the month, at 4:15 p.m.

Chapel News

THE CHURCH EVOLVES AS WELL

Modern man finds himself involved, deeply involved, in changing the and adapting the social structures of society. This adaptation of structures finds itself expressed in Church life as well. We are challenged to determine how a parish should function. Home visitation, religious education of children, the need for marriage preparation, not to speak of the great problems of a meaningful liturgy for large urban communities - these and so many other pastoral questions compel us to re-think the very structures of parish life itself.

The mere presence of large numbers of people in any given parish community creates problems unthought of in previous ages. Faced with the advances in technical and social life, the Christian community is seeking to make its faith relevant. The voices of so many of our youth, both in the ranks of the workers and on the campuses of our universities and colleges, brings this need for relevance to a sharp focus. Their questions echo and re-echo in the ears of men as they ask: "Is life worth living? If so, what is its worth? What answers does Christianity give? Before these questions, the adult generation frequently stands bewildered and rather baffled.

The religious formation of so many of our adults, both clergy and laity, often times has not prepared them to answer. A training in an abstract and intellectual approach to faith does not give the concrete meaningful answer sought by so many of today's generation. Practices which have been accepted over the period of a lifelong adherence to the Christian Faith are called into question. A rather individualistic and private concern for personal salvation in the practice of one's faith oftentimes does not lead to that love and concern necessary today in an exchange and support of each other's faith.

The Christian today is constantly confronted with new situations. He is required to re-assess and continually re-think his positions. The initial awakening, education and synthesis of his faith must be reconsidered again and again. This becomes a process which begins with early childhood, passes through different stages during formal education to adulthood. Even in adulthood, mature faith requires a man to reflect a new many times over.

CFB GIMLI AUTO CLUB

TIRES

EXCELLENT SELECTION
ON HAND.

W/W AND BLACK.

REASONABLE PRICES.

GOOD LINE OF ACCESSORIES

CO-OP INSURANCE

AUTO - FIRE - MOTORCYCLE
3, 6 & 12 Month Policies,
Issued Immediately
INSURANCE AT COST
PLUS EXTRA BENEFITS
All military personnel
insurable.

Agent: J.B. Heidinger
85 5th Ave.
642-8347

WATER SAFETY CLASSES GIMLI BEACH

Sponsored
by Gimli Kinsmen
3 July to 31 July
9.30 am 4.30 pm.

Register at: Kinsman
Shelter, Gimli Beach,
Monday June 29,
Tuesday June 30, or
Wednesday July 1, from
10:00 am to 4:30 pm.

For GOOD Food, and
Good Service
VISIT THE

Lake Inn RESTAURANT

TIRED OF COOKING??

WHY NOT TRY OUR
NEW TAKE-OUT SERVICE.

Next to Gimli Tailor, Gimli

The MART

HOUSES

I will rent your house or apartment while you are on summer holidays. Please drop a note to Al Curtis c/o General Delivery, Gimli.

Gimli - Cottage for sale or rent 34-1st Ave. Fully modern very reasonable. Winnipeg - 772-7288.

AUTOMOBILES

For Sale: 1969 G.T.O. 15000 mi. Excellent condition. Can be seen at 25-7th Ave., Gimli. Phone after 6:00 p.m. - 642-5455.

For Sale: 1968 Cortina 1300; 14,000 miles, still under full warranty - best offer - Phone 642-8215.

For Sale: 1968 Firebird. Well equipped with many options. Phone 642-5487 or Local 116.

For Sale: 1965 County Squire Wagon, Automatic, power steering and breaks V-8. Car top carrier for sedan type auto. Phone 642-8259.

MISCELLANEOUS

Mossberg 12 Gauge bolt action shotgun. Like new \$35. Contact Pete Batchelor - Phone 642-8215.

For Sale: Stroller (German) very good condition - \$25. Crome dinette suite 4 chairs with floral pattern of blue - green - \$45. Four tires 6.00-15, about 5000 miles of wear remaining what offers? C.W. Potter 5882.

For Sale: 15' molded playwood run-about. Fiber glassed - 35 H.P. Johnson elect. start. - 800 lb. tilt trailer. Licensed 1970. \$725. can be seen at Townhouse #8, Evergreen.

For Sale: Table model fridge. No freezer. Ideal for extra cold drinks etc. Good working condition - \$8.00 Phone: 642-5992.

For Sale: Clothes Dryer - like new. Playtex nurser bottles Phone: 5404.

For Sale: 17" portable T.V. used one year. Also chesterfield and matching chair. Phone: 642-8310, 95-3rd Ave.

For Sale: Heathkit ARW 15 Receiver-factory wired - 150W; Lange Ski Boot size 6 1/2 M; Sunbeam automatic Electric Humidifier-DeLuxe model, walnut like finish, size 18"x24"x17". Maj. G.J. Akamoto - Local 31.

WANTED: one used mens bicycle. One reel lawnmower (manual) Good Condition. Phone 5517, Capt. Stoddart.

For Sale: Automatic Strobe Lights - ideal for a Band; one P.A. Amp.; one dual tape deck; one sound colume; one Jo Boy turn table. Phone - 642-8259

The Mart continued on page 22

STARLITE THEATRE

Chitty Chitty Bang Bang rockets you to the four corners of adventure.

Where Caractacus Potts invents a magical car that sails and flies.
Where the villainous Baron Bomburst stops at nothing to steal Chitty.
Where our hero and Truly Scrumptious rescue Jeremy and Jemima from the terrible child-catcher and free the children of Vulgaria from the evil rulers.
It's the fabulous fairy tale you dreamed about yesterday.
It's the magical, musical excitement your kids dream about today.

GET A "Chitty Chitty Bang Bang" OUT OF LIFE!

NOW CONTINUOUS PERFORMANCES AT POPULAR PRICES DIRECT FROM ITS RESIDUAL SEAT ENGAGEMENT!

SUN-MON 28-29 JUN
GENERAL 8 p.m. 150 MINS

NOTE:.....

This is the end of our regular schedule. The Starlite Theatre will now be closed for three (3) weeks and will re-open on July 21, with one afternoon Matinee at 1:30 p.m. on Tuesday and one evening show on Thursday only, for the summer months. The Starlite Theatre will go back to its regular schedule commencing Thursday, Sept. 10, 1970.

400 CLUB WINNER

22

Lt J. GREENOUGH

Gimli Tailor

SUITS & UNIFORMS
-made to measure
-four to six weeks

Next to Lake Inn Restaurant, Gimli

Selkirk Funeral Chapel

** serving the Interlake Area with dedicated service
** 24-hour Ambulance service

Phone 482-6284
Res. 482-5419

209 DUFFERIN AVE.
GARTH CLARY, DIRECTOR SELKIRK, MANITOBA

THE FRAMFARI X-WORD

P F A B U G N I H S I F C G R
T R G R O U N D S H E E T E P
K E T N E T I E G L G N L P E
S E L G I A R U O A T A H R E
L D A L H T Y P B H X C E E L
A O M T A R A G M A A C S P S
M M P M O M N O T E A C A M P
I A R P E I S I B G E C R A P
N I E V P Q O F O N R O B C O
A S O E U N A C E I R L E A P
M T E I P F I R E M A E E G A
S L T S U N Y I N M I M R B N
S O W E I V T H G I N A G B E
E R U T A N D O O W S N T Q R
I P T O C P M A C S A V N A C

Listed below are the words that you will find hidden in the puzzle above. These words are spelled out in all directions - so look very carefully. By assembling the letters that remain, in order, you will find today's hidden words which will be published next week. This week's hidden words have 28 letters.

LAST WEEKS ANSWER: PERSONEL MAN MANAGEMENT.

TENTING

- | | |
|--------------|--------------|
| AIR MATTRESS | MALLET |
| ANIMALS | MOSQUITOE |
| BEACH | NATURE |
| BEER | NAPTHA |
| BOATING | NIGHT |
| BUG | PEG |
| CAMP | POLE |
| CAMP COT | PROPANE |
| CAMPER | RAIN |
| CANVAS | RELAXATION |
| COLEMAN | SCENERY |
| FIRE | SLEEP |
| FISHING | SLEEPING BAG |
| FREEDOM | SWIMMING |
| GRASS | STOVE |
| GROUND SHEET | TENT |
| GUY ROPES | VIEW |
| LAMP | WOOD |

MACLEOD'S

Rent a Camping Trailor

\$35.00/Wk. Book Early