



## FAREWELL!

Smoothly rocking on his heels, in an effort to promote his ~~devil~~ Demon-may-care attitude, Major George Akamoto bids a sad (don't be fooled by the smiles) farewell to Capt Ralph Harrison (L) and Lt Gary Scott. The occasion was the departure of our final Tutors last Thursday to Moose Jaw, completing the exchange that has been carried out over the past few months. All of the former Tutor "drivers" are now being cross-trained on "The Truck" (T-33), and reports indicate that they are developing tremendous muscles. The grievous departure explained fully the cold and-rainy weather we have been experiencing. The gods are definitely not pleased! (CF Photo)



# Framfari



Volume 1 Number 12

C.F.B. GIMLI, ASPEN PARK, MANITOBA

Friday, April 24, 1970

## Gimli Pioneer Recognition Date Set

The Committee met at Betel Friday April 17th. Mr. & Mrs. O. Stefanson attended as guests and Mrs. Stefanson will be helping in any way possible.

Mr. D.B. Hartley, Editor of the Framfari, arrived to take pictures of pioneers and students. However it was a business meeting and we had to disappoint him. He has promised to come on another more suitable occasion and we thank him for his interest. It gave us all an extra spirit of enthusiasm which lasted throughout the entire evening.

With full support and her usual charm Miss Hjartarson, Martron of Betel, helped us arrange our Pioneer Recognition date. It will be Sunday June 7th in the form of an afternoon Tea at the Betel Home, starting at 2 p.m. and continuing through to 5, 6, or 7 p.m. if necessary. Miss Hjartarson is making arrangements with local groups to form a committee in charge of refreshments and has thus lifted a heavy load from our committee. Prominent people in the community will be requested to pour tea and open the festivities. Mrs. Ruth Scott from Aspen Park joined our group and has taken over the busy job of the

Car Pool. Her phone number is 8875. Miss Margaret Sveinsson, a pioneer living at Betel received sincere thanks for typing a list, complete with names, ages and dates of birth of the 69 people now living at Betel. Names of all eligible pioneers (75 and older) have to reach the Winnipeg Committee by April 30th. They will send the bronze pioneer pins and attractive place mats which will be awarded on this day.

Pioneers residing at Betel will be joined by the students who have adopted them. Pioneers in the community will be brought to the Tea, by their students, families, and friends. Others not well enough to attend will have their awards delivered to their homes. The Gimli Pioneer Committee will also present its own award, in the form of a certificate of thankful recognition to all elderly citizens in this area aged 70 years and over.

Students in the plan are being given lapel buttons by the Committee. Those who have not collected them may do so at any time. We are continuing to use our fund raiser "The Praying Hands Pen", which has already

paid for the 75 student buttons. These pens make ideal gifts for many occasions. They cost \$1.00 and orders may be made by calling any of the following phone numbers: 5371, 5585, 8132, or 5850. They can be seen at the office of the Norseman Motel. Of the hundred\* now on order 39 are already sold. So don't wait too long if you want one.

Mrs. Wilson, another new member, and representing Guides and Rangers, is arranging for girls to make paper name tags for people attending the Recognition Tea. She is also going to request some of the girls to attend in uniform. These girls will help with the tables - dishes - and food, etc. More information about this important event will be published in the coming weeks.

P.S. Did you save a couple of hours for the film 'One Hundred Years of Icelandic Settlement in Canada'. Remember -- the George Johnson School Gymnasium, 8 PM. Everyone welcome. Silver collection only - nickles included. The Icelandic National League is bringing this film right from Iceland. So, let's support them with a full house. The Gimli Band will be there; We will be there -- and we hope you will be there.

# Editorial

A Winnipeg hippie-leader appeared on a talk-show Tuesday and made a stand for 'mis-understood' youth. At least, that's what we think he was striving for. Organizer of a summer 'love-in' in Assiniboine Park, he had spent Monday evening defining his aims to East Kildonan council and informing them of his intentions to bring legal action against them for alleged slanderous remarks. This from the same 'gentleman' who so rudely confronted and challenged Mr. Trudeau during his visit to the Manitoba legislature last year.

On the show, confronted with views running contrary to his own, this war painted and love-beaded individual resorted to the usual evasive tactics of today's 'always-sure, never-right' radicals. Questioned concerning his actions and philosophies, he was quick to respond with "I don't have to answer to you!" or "No comment!" Very Well.

Turning the tables, it's time for 'the establishment', which is nothing more or less than society, to stand up to this rebellious, radical, and often ridiculous minority who feel that they can 'revolutionize' everything and everyone, and tell them that we don't have to answer to them either! Using mistaken arguments which claim that they are inheriting a sicker world than anyone before them and illogic such as "if everyone's doing it, why not legalize it?", they have been getting away with pushing too hard, too long. It's time to make a stand. Time to exercise our available legal and democratic options to straighten up or ship out these irresponsible factions and let the majority get on with the business of maintaining and improving man's lot here on 'Spaceship Earth' before we crash in uncontrollable chaos.

Revolutionary idealism is a wonderful study. Unfortunately, studying and talking don't get things done. What we need are actions, not words, and to clear the way for actions, we first have to take a few ourselves.



## SOUND OFF

Sir,

What about this generation gap? Is there really one? I wish to relate a rather amusing incident which took place recently in a Sunday School Kindergarten class.

Our lesson for one particular Sunday was on family unity, how love in the home starts with the various family members and how this influences the Church. As the Adopt-A-Grandparent plan is so prevalent here in Gimli, it was decided to invite a charming lady of 84 years to our class. She is a great-great-grandmother so we felt she really qualified to fill the role of a grandparent. It was indeed a marvelous experience to see how quickly the 80 year "generation gap" disappeared as these 30 young children touched our guest (to see if she were real!) Their eyes sparkled as they talked to her and listened to her stories.

It was later revealed to me what one of the five-year-olds told her mother about our guest. Her conversation went thus:

"oh, Mom, you should have seen who was in Sunday School today! There was an old lady, a really old lady, you wouldn't believe how old she was! She must have been 40 years old!"

A generation gap? Well, I'll let you draw your own conclusions!! Incidentally, if you are interested in joining the Adopt-A-Grandparent plan, just call 5850!

Sir,

I was rather interested in your editorial of last week's Framfari. I felt that you really "hit home" on a number of points -- specifically that of our "taken care of" expenses.

We have known personally of two instances where an ex-serviceman and his family have led an extremely hard time adjusting to "civvy street" financially. By this, I mean, that suddenly they had rent, utilities, medical payments, insurance payments, income tax returns and so forth to think about in terms of budgeting. Where this had all been taken so much for granted before, it now hit them squarely and they did not know where to turn.

I feel that if a serviceman could even see how his personal income tax form is filled out, this would not seem such a burden to handle when the time came. Mind you, I realize there are many qualified people around who will help you (for a fee), but a preview of what is in store for a serviceman entering civilian life could save some stress and strain, financially.

Keep up the good work with the Framfair -- it's looking better all the time.

A concerned reader.

Sir:

Last weeks' issue contained a pictorial article on "Operation Splash Down", the Annual Dinghy Drill for all Staff Aircrew at CFB Gimli.

The view of the instructor getting into his dinghy with his parachute still on should lay to rest any rumors that he will be going for an "A1 Dinghy Drill Instructors Rating" this spring.

In the opinion of the undersigned the instructor would have appeared in a better light, had you explained he was merely demonstrating the difficulty of mounting the dinghy with the fully deployed parachute still on.

Damply Yours,  
J.E. Shultz

FRAMFARI is published weekly for distribution on Friday. Opinions expressed are those of the writers and do not necessarily reflect Official Canadian Forces Policy. The Editor reserves the right to edit all copy and advertising to suit paper policy. All correspondence should be addressed to;

Editor, Framfari  
Aspen Park, Manitoba  
Phone: 642-5151 - L126R2

Deadline for all copy: 2 p.m. Monday

### PUBLISHER

....Col. J. F. Dunlop  
Base Commander

### BUS. & PROD. MGR.

....Maj. A. C. Platz-L57

### EDITOR

....D. B. Hartley-L126R2

### ASS'T EDITOR

....G. D. Kenny-L154

### SPORTS EDITOR

....C. Potter-L37

### WOMEN'S EDITOR

....Mrs. Betty Bennett-7964

### AD. MANAGER

....P. D. Sharkey-L154

### ASS'T AD. MGR.

....J. F. Bennett-L154



Gathered in the Officers' Mess last Saturday evening on the occasion of the Spring Ball, was this smiling group, two of whom were discussing their mutual problems. L/Cdr Doug Rowland, a Reserve Officer at HMCS Chippawa, Winnipeg, and Capt Bill McKee have both been posted to Ottawa, and were contemplating the rumoured high rents in that area. Bill is going to 414 (EWU) Squadron, while L/Cdr Rowland's duties will be somewhat non-military. He is to take his place as the NDP MP for the Selkirk riding, having recently been elected in a by-election here. Good luck to them both! Members of the happy throng are (L to R) Capt Bill McKee, Mrs McKee, Mr. Joe Arnason, Mrs. Dunlop, L/Cdr Doug Rowland, Mrs. Rowland, and Colonel J.F. Dunlop, Base Commander. (FramFoto)

We're not in the grocery business, ..... **but**  
**Farm Fresh Eggs**  
**30¢ per doz.**  
 —————  
**MACLEOD'S**

## Ted's Solo

---

**SPECIALIZING IN:**

- \* MEATS
- \* GROCERIES
- \* FRUITS
- \*

**WE DELIVER**

**642-5337**

## Spring Ahead

**DAYLIGHT SAVING TIME                      SUNDAY APRIL 26 th 0200**

**MOVE CLOCKS AHEAD ONE HOUR                      DON'T BE LATE FOR CHURCH!**

## HELP! HERE COME the BIRDS

From now until the latter part of May, something like 50 million ducks and between 2 and 3 million geese, cranes, and swans will be crowding the flyways north to their nesting grounds. The inter-lake area happens to be common to the central flyways of all these species. Staging areas, where tens of thousands of these birds can be found at any one time during migration, are located in the marshy areas south of Lakes Manitoba and Winnipeg, between the lakes, and in North Dakota just south of the border. Their appearance is a welcome confirmation of spring, but a hazard to aviation.

Unfortunately, these birds refuse to file flight plans with the Air Traffic Control people, and refuse to maintain assigned altitudes. Ducks crowd the lower 2000 feet above ground, while their larger companions spread themselves through 10,000

feet of atmosphere. Too often, our aircraft seem to get in their way. Although the bird is a sure loser, very serious damage can also result to aircraft involved in the collision.

The problem is a serious one, particularly with our air base located in the crowded sky. With this in mind, we are asking the help of both pilots and the public in providing information of bird migration. Whenever flocks of these birds are sighted, we would appreciate a phone call to the base Weather Office at local 20. Information on whether the birds were flying low or high, whether ducks or geese, and whether the number were few or large would be most valuable. This information will not only alert us to the potential hazard in the area, but hopefully will provide us with data that can relate their migration to certain weather conditions and changes.



Ernie Stefanson, local pharmacist, shovels the walk in front of his store after Monday's storm. If these 'signs of Spring' persist, it is rumoured that the populace will roll up the sidewalks, shut everything down, and go back into hibernation for the duration. (FramFoto)

## Pollution I - Dix

Do you feel the difference? Can you see the difference? We live in the Atomic Age now, and each of our lives and bodies have already been altered by that fact. Each of us now carries radio active strontium in our bones, radioactive cesium in our muscles, and perhaps radioactive iodine in our thyroids.

We have also witnessed another form of "nuclear proliferation" - the expanding use of peacetime nuclear reactors for electric power generation. With the growing need and use of fuels, it is predicted that nuclear powered energy will be required by many nations. At the moment, in the U.S, the electricity is 1% nuclear generated. By the year 2000, it must be 50%. Fifty nations around the world have at present a small research reactor with an eye to constructing electrical generating stations.

What most people don't realize is that small amounts of radioactive waste escape into the environment from mining, to fuel use, to reprocessing the fuel to the release of the elements. Some used fuels and wastes are so dangerous that they must be stored in steel and cement tanks for hundreds of

years. If these tanks even leaked because of the shifting of the earth, it could have a serious effect on us and on our water supplies.

Small amounts of radioactivity now, may not seem too bad - but as you move up the food chain from microscopic plants and animals to small fish to larger fish to birds animals and then man, it becomes concentrated possible hundreds or thousands of times over.

The cooling water dumped from nuclear reactors often into large rivers, increases the radioactivity tremendously. In the Columbia River, Plankton have a radioactive count 2000 times that of water, caddis fly larvae achieved concentrations 350,000 times that of water, swallows 75,000 times that of water and duck yolks 40,000 times that of water.

Of course much has to be learned about the effects of radioactivity - what effects they are having now and what they will do to our offspring. One thing is certain, however, cancer, congenital melformation and life shortening have been noticed in laboratory experiments. Again it boils down to more and more people demanding more and more services for life and thus more and more power.

## As Time Goes By

by Alice E Chase

*I used to think that getting old  
Was nothing less than frightful  
But now that it's a fact of life  
I'm finding it delightful!*

*No longer need I get involved  
With silly things that bore me  
It's quite O.K. for me to say  
Late parties nearly floor me!*

*I dress the way I want to  
And my diet doesn't matter  
Nobody's going to notice  
If I'm thinner or I'm fatter!*

*I can sleep late in the morning  
And catch up with my reading  
While other people shovel snow  
Or wrestle with the weeding.*

*I have Medicare for doctor bills  
And extra tax deductions  
There are lower rates for travel  
Even subway fare reductions.*

*But best of all I've settled for  
This peaceful contemplation  
Content to watch the world go by  
With quiet resignation.*

*I guess when Father Time creeps up  
To tap us on the shoulder  
He leaves us with the special skills  
We need for getting older!*

## GIMLI CONSTRUCTION CO. LTD.



### Ready Mix Concrete

"Quality Remains Long After Price is Forgotten"

Phones: Plant 642-7275 - Res. 642-5351

BOX 1046

GIMLI, Man.

**Is your driveway a mud bog again this year?**

**Give us a call for a free estimate to resurface it**

Suppliers of Read-mix, sand and gravel. All types of crushed aggregates.

# Yours, Fredd

Dear Sir;

I was over in the section having coffee the other day, when the guys got talking about the \$15 increase in rent for PMQ's. Naturally, they were hostile and bitter because, with so much adverse publicity in this regard, these days, it is only natural for average human beings (normal, run-of-the-mill humans, that is) to be hostile and bitter. I waited until they had all ranted and raved and then cooled down and then, ever so subtly, I presented my own views.

"You guys are a bunch of cry-babies," I said. "You have failed to look at the entire situation with the insight and patience which the Queen expected of you when she asked you to join this here worthwhile military Force. Don't forget, she could just as easily get rid of you...it's her discretion, remember!"

"Look at it this way, guys. The government obviously NEEDS the extra money or else they wouldn't ask us to give it. Right? Right! Now, why do you think they need the money?? To improve our lot, that's why."

"My lot's a mess, right now," replied one of the guys. "It's got a big, ugly tin house in the middle of it."

"No, no, no, you ninny," I retorted, trying to correct him without making him feel embarrassed. "I mean lot...L-O-T...your situation, your life-style, your habitation."

"That's what I said, Fredd...they could sure improve my habitation by getting rid of that tin hut and building a half-decent structure. Or have you forgotten that many bases have PMQ's with basements and upstairs' and heat which comes out at the floor, not the roof and standard 9' ceilings? And I haven't even touched on that obstacle course called a road or the dirt covered driveways or the Goulding School where our kids are educated and..."

"C'm'on, be reasonable...these things all take time," I said. "I am almost positive that they will fill in the potholes again this year. After all, they've done it every year for 20 years, why should this year be any different? And I'll bet the Goulding School will be given a paint job to make it look better...maybe even another temporary room so they could get a library or some other frill. And don't forget, that last year they put in new furnaces which now force the hot air to the roof much faster than ever before. Why, Mr. Hellyer even suggested a few years ago, when he visited Gimli, that since we don't have basements we could store stuff on the high ceilings. And we know he must have been serious because they made him Minister of Housing right after."

A chorus of voices arose...mutter, mutter, Fredd, murmur, murmur, idiot, snicker, snicker. Finally, "Fredd, prove it!"

"All right, guys I will...by using figures. There are 200 PMQ's costing each family approximately \$100 per month. That's \$240,000 per year or a quarter of a million dollars. Since the PMQ's must certainly be paid for after all these years, that represents pure profit, after expenses are paid. Add an extra \$15 and that's \$36,000 more per year. So, the government is receiving \$276,000 per year just to look after the upkeep of our domiciles...doesn't it stand to reason that they will use even a part of it for making the place a bit better than a low-rental housing development in any city?"

Sir, I could tell by their happy faces as they got up and walked away that they were convinced. Aren't you?

Yours,

Fredd

## GIMLI SPORTS CENTRE

Known as  
INTERLAKE PROPANE LTD.

-Centre St. West-

\*\*\*\*\*

We handle all types of  
propane camping equipment.

TRIUMPH motorcycles (all models)

YAMAHA motorcycles (all models)

'Best buys in town'

Bus. - 642-5176 Res. - 642-5594



THE

*falcon lounge*

OF FIRST AVENUE  
GIMLI, MAN.

# EATONS

CATALOGUE SALES OFFICE

## FASTEST SERVICE

IN GIMLI

Phone

642-5158

Catalogues available

CATALOGUE

& RETAIL SERVICE



### DOCKSIDE FISH PRODUCTS

specializing in:  
\*fresh and smoked fish  
\*retail fish sales

Centre St., East

phone 642-5108

# The Cooking Nook

## Festive Roast of Pork

- 2 matching loin or rib roasts of pork (2½ to 3 lbs. each)
- 1 tbsp. salt
- ¼ tsp. pepper
- 1 tsp. dry mustard
- Apple stuffing (see recipe below)
- 1 tbsp. corn starch
- 1 tbsp. cold water
- ½ c. apple juice
- few drops red food coloring.

Have butcher bone the roasts. Combine salt, pepper and dry mustard and rub into surface of meat.

Preheat oven to 325 degrees. Prepare apple stuffing as directed below. Spread the stuffing between the two pieces of meat, fat sides out. Tie together. Place on rack in shallow pan, with a fat side up. Roast uncovered, for about 3½ hours or until a meat thermometer, inserted into centre of top roast, reads 185 degrees.

For the glaze, combine corn starch and water until free of lumps. Add to apply juice and cook, stirring constantly, until smooth and thick. Add red food coloring, as desired. About 30 minutes before roast is done, spread on glazing mixture. Continue to roast until well done. Allow to stand for 15 minutes before serving.

## Apple Stuffing

- 3 tbsp. butter or margarine
- ¼ c. chopped onion
- 3 c. soft stale bread cubes
- 1 large apple, peeled and chopped
- ½ tsp. sage
- ½ tsp. salt
- few grains pepper

Melt butter or margarine; add chopped onion and saute until just tender. Fold in remaining ingredients.

# Trim 'n' Fit



Wrists, forearms and hands are often neglected. Try these two "pepper-uppers".

...Stand tall with arms forwards. Now to crisp, quick counts, open and close the hands. (open them very wide and close them very tightly) Do 40 repetitions.

...Then clench your fists and rotate them at the wrist in both directions for 10 or 15 counts each.

...Now hold the arms loosely in front of you with the hands very relaxed and shake them violently at the wrist for 100 counts. Very refreshing..specially when you smile.

# TAYLOR PHARMACY

Business - 642-7470  
Evenings and Emergencies 642-5810



100's \$1.79



SUPER SIZE  
\$1.19



1.5 oz., reg. \$1.45

99¢

Sweep-Ezy Broom  
reg. \$1.29 Special 79¢

FACELLE 4 pack, 63¢  
TOILET TISSUE



48's  
\$2.19

NEW DAWN  
HAIR COLORING  
\$1.49



SMALL BOX  
5 for \$1.00

BAN SUPER DRY  
7 oz., reg. \$1.79 \$1.29



16 oz. reg. \$1.59  
\$1.09



LARGE 15 oz. size  
\$1.98



7oz., reg. 89¢  
69¢

MUSIC DEPARTMENT SPECIALS 20% OFF  
ON ALL RECORDS, TAPES, CASSETTES, AND  
MUSIC BOOKS. (From April 25 to May 2)

# DENTAL IQ

Capt DM Hodges

(Petawawa Base Post) With the popularity of motorbikes and the increased number of youngsters playing hockey, the number of accidents involving front teeth has risen sharply. The next question is usually asked by frantic mothers.

Question:

Can front teeth knocked out by a blow be successfully put back into place?

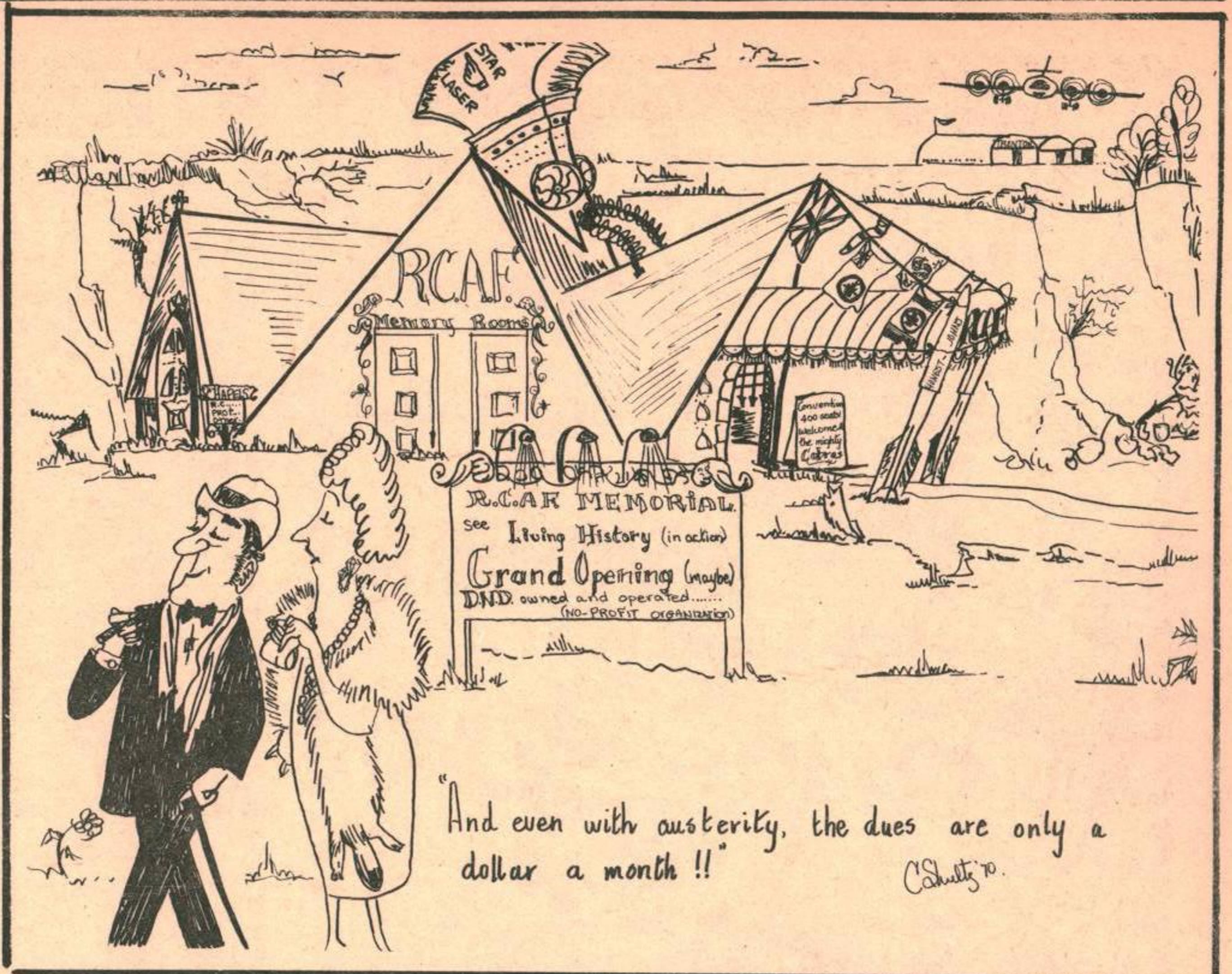
Answer:

Several cases have been reported in which front teeth have been put back into the bony sockets from which they had been knocked out. Some of these replanted teeth have tightened up and worked well for a number of years, others have to be removed after only a few weeks.

If your child has one of his front teeth knocked out, without being broken, take the child and the tooth to the dentist immediately. If the tooth is completely formed, or close to it, the dentist may be able to replace the tooth; after removing the nerve and sterilizing the tooth. The tooth will have to be held in place, by use of a wire or plastic splint. In a few days there is a good chance that the tooth will tighten up. The dentist will advise you as to when your child can

stop wearing the splint. Great care must be taken at this time not to bang the tooth while eating or playing.

Replanted teeth are not permanent. The roots will eventually resorb away leaving a loose detached crown which will have to be removed. However, replants in adolescents and young teenagers is worth a try as, when successful, they can restore good appearance and hold space until growth is complete.



# ADOPTION QUIZ

MUST WE BE HOME OWNERS?

No. Your home can be in a house or an apartment which you own or rent, but it must be adequate so the family will have room to grow without crowding.

## SELKIRK LUMBER COMPANY LIMITED

Complete Building Supplies - Concrete Block Manufacturing

SELKIRK 482-3141

WINNIPEG BEACH 389-2024

GIMLI 642-8255

## F78 Premium Starfire Polyestre "78" tires

F78 x 14 w/w.....	26.48	(INSTALLED)
G 78 x 14 w/w.....	27.49	(INSTALLED)
H 78 x 14 w/w.....	30.46	(INSTALLED)

## GIMLI AUTO BODY

Call Lawrence 642-5137



# TOM-BOY WESTERN CANADA SALE

**The Modern Encyclopedia of**  
**BABY and CHILD CARE**  
UP TO 16 YEARS OF AGE

**COMPLETE SET OF 10 VOLUMES**

with coupon  
**\$3.77**

**GINLI**  
PRICES EFFECTIVE—APRIL 23rd, 24th, 25th, 1970

**TOM-BOY** Westfair Associate

VALUABLE COUPON  
The Modern Encyclopedia of  
**BABY and CHILD CARE**  
A Complete Set of 10 Volumes \$3.77  
Reserve coupon at TOM-BOY STORE

# TOM-BOY WESTERN CANADA SALE

**ban** roll-on deodorant  
"STOPS PERSPIRATION FOR HOURS"  
ECONOMY SIZE 12c OFF  
**99c**

**Lady Patricia** HAIRSPRAY  
Firm, Extra Firm, or Soft  
**69c**

**BRYLCREEM** HAIR DRESSING  
KING-SIZE TUBE **88c**

**ENO** FRUIT SALTS 1/2-oz. BTLE. **93c**

**RESNAN** HAIR CONDITIONER 6-oz. BTLE. **99c**

**LISTERINE** ORAL ANTISEPTIC 6-oz. BTLE. **69c**

**BAND-AID** PLASTIC STRIPS 2 7/8" PKG. **69c**

**Health and Beauty aids...**

**BAYER ASPIRIN** BOTTLE OF 100 TABLETS **67c**

**Crest** Crest Toothpaste FAMILY SIZE TUBE **99c**

**HEAD & SHOULDERS SHAMPOO** TUBE OR LOTION **\$1.09**

**LYSOL SPRAY** "DISINFECTANT" 7-oz. CONT. **79c**

**HEALTH AND BEAUTY AIDS**

**TOM-BOY** Westfair Associate

# TOM-BOY WESTERN CANADA SALE

**"BIG T" FEATURE!**  
BRIGHT'S—Canada Fancy, Clear  
**APPLE JUICE**  
3 48 fl. oz. TINS **\$1.00**

**"BIG T" FEATURE!**  
LIBBY'S—Canada Fancy  
**TOMATO JUICE**  
3 48 fl. oz. TINS **\$1.00**

**"BIG T" FEATURE!**  
MALKIN'S—In Tomato Sauce  
**BEANS with PORK**  
6 14 fl. oz. TINS **\$1.00**

**APPLE SAUCE** SUN RYPE—Canada Fancy, 5 14 fl. oz. TINS **\$1.00**

**CHOCOLATES** NEILSON'S—Bundles, 16/c BARS **89c**

**PEACHES** ENGLISH—Choice Halves or Sliced, 3 14 fl. oz. TINS **89c**

**JAVEX** BLEACH 128 fl. oz. CONT. **89c**

**TOWELS** BETTER BUY—White or Pink, 7y PKG. **55c**

**KLEENEX** Facial—New from Bantrol Laboratories, 3 100's PKG. **\$1.00**

**BEANS** MALKIN'S—Fancy, Col., French, Green, 4 14 fl. oz. TINS **\$1.00**

**PICKLES** HEINE—Kosher Dill, 48 fl. oz. CONT. **77c**

**BISCUITS** CHRISTIE'S—Chips Away, 16-oz. PKG. **59c**

**CORN** MALKIN'S—Whole Kernel Canada Fancy, 12 14 fl. oz. TINS **89c**

**SPAGHETTI** LIBBY'S—With Cheese and Tomato Sauce, 3 28 fl. oz. TINS **\$1.00**

**PEANUT BUTTER** KRAFT—Smooth or Crunchy, 40-oz. JAR **\$1.19**

**TEA BAGS** SALADA—Prior Pack, 100's PKG. **67c**

**COFFEE** MAXWELL HOUSE—Instant, 24c Off, 10-oz. JAR **\$1.69**

**CATSUP** SEVEN FARMS, 18 12 fl. oz. BOTTLES **89c**

**CELERY STALKS** CALIF.—Canada No. 1, 29c

**SPROUTS** BRUSSELS—Calif., Canada No. 1, 49c

**ENDIVE** CALIFORNIA—Ear Raw or Cooked, EACH **39c**

**BROCCOLI** CALIFORNIA—Something Special, LB. **39c**

**CANTALOUPE** TEXAS—Canada No. 1, Size 5 1/2", 3 \$1.00

**LEMONS** SUNKIST—Size 1 1/2", To Garnish Most Anything, 3 29c

**ORANGES** Size 5 1/2", 12 **89c**

**POTATOES** 10-lb. Bag **69c**

**STRAWBERRIES** CALIFORNIA—Canada No. 1, Pint Basket, EACH **39c**

**GRAPES** SOUTH AFRICAN—Berlarka—Large, Black Beauties, LB. **59c**

**FREEZER BEEF SALE**  
Western Beef at its Best!  
**RED OR BLUE BRAND BEEF**  
Cut and Wrapped FREE for Your Freezer!

**HINDS** 110 to 140 lb. Average... LB. **79c**

**FRONTS** 115 to 145 lb. Average... LB. **59c**

**SIDES** 250 lb. Average... LB. **69c**

**PORK LOINS** LB. **73c**

**VALUE Check'd BEEF**

**Roast** Round Bone or Chuck, LB. **75c**

**Lamb Shoulders** Square Cut—Whole or Half, AUSTRALIAN, LB. **43c**

**Chuck Steaks** VALUE CHECK'D RED OR BLUE BRAND BEEF, LB. **85c**

**ROUND STEAK or ROAST** Red or Blue Brand Beef—Boneless, LB. **\$1.19**

**MINCED BEEF** Freshly Ground, 1-lb. PKG. **69c** 3 **\$1.99**

**TOM-BOY "BIG T" FEATURES!**  
VALUE CHECK'D RED OR BLUE BRAND BEEF  
**SIRLOIN or WING**  
**STEAKS**  
**\$1.29**  
LB.

**COOKED HAM** SWIFT'S—Sliced Fresh, As You Like It, LB. **\$1.29**

**BULK WIENERS** SWIFT'S—Skin-on, LB. **49c**

**BACK BACON** SUNSET—By the Piece, LB. **\$1.19**

**SALAMI** SWIFT'S—Dutch Style, LB. **69c**

**LUNCH MEATS** SWIFT'S—1 Tonic, 3 1/2-oz. PKG. **89c**

**CHICKEN PARTS**

**BREASTS** Back Bone, LB. **69c**

**WINGS** Skin-on, LB. **39c**

**THIGHS** Back Bone, LB. **59c**

**DRUMSTICKS** LB. **79c**

**NATIONAL BABY-WEEK SPECIALS**

**BABY FOOD** HEINE—Strained or Junior, All Varieties, 5 4 1/2 fl. oz. PKG. **59c**

**Q-TIPS** Cotton Swabs, 70's PKG. **57c**

**BABY SOAP** BABY'S OWN, 2 **33c**

**BABY BOTTLES** Complete, Super Plastic, EVEN-FLD, EA. **49c**

**ASPIRINS** BAYER—Children's, 30's STL. **37c**

**BABY CEREAL** HEINE—Infant, 16-oz. PKG. **57c**

**EVAPORATED MILK** PACIFIC, 1-lb. TIN **18c**

**FROZEN FOODS**

**Orange Juice** LIBBY'S—Canada Fancy, Concentrated, 4 9.4 fl. oz. TINS **\$1.00**

**Peas** LIBBY'S—Canada Fancy, 2-lb. PKG. **49c**

**French Fries** McCAIN'S—Shredding, 2-lb. PKG. **49c**

**FRASERVILLE**—Beef, Chicken, Turkey, 4 PKGS. **\$1.00**

**Meat Pies** RUPERT—Curried Rice & Shrimp—or Cod with Spinach, 2-lb. PKG. **59c**

**Mini Fillets** WESTON'S—Iod. Commens, 3 **\$1.00**

**BAKERY FEATURE**

**DUTCH OVEN**—White or Brown, Stired, WESTON'S—Iod. Commens, 4 **99c**

**BREAD** WESTON'S—Iod. Commens, 3 **\$1.00**

**BUNS** WESTON'S—Iod. Commens, 3 **\$1.00**

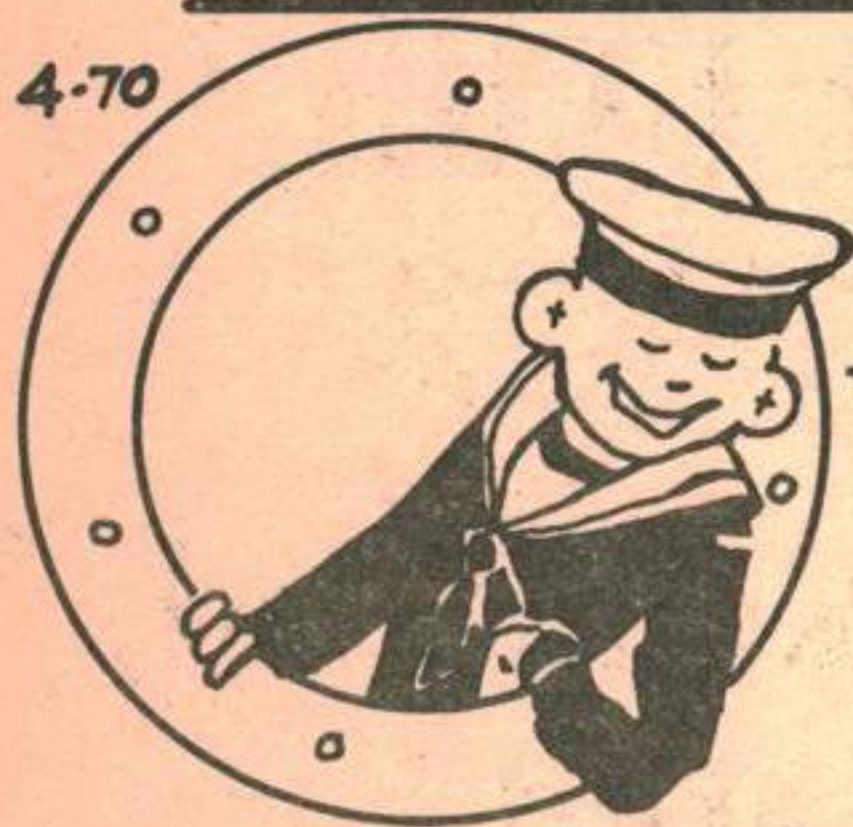
PRICES EFFECTIVE—APRIL 23rd, 24th, 25th



Presented with their CD's, recognizing twelve years of meritorious (i.e., they didn't get caught) service in the Canadian Armed Forces, these five smiling gentlemen, looked their best for our Base photographer. Recipients were (L to R) Cpl J.E. Plant, Cpl. J.R. Leduc, Cpl. J.A. Theriault, Cpl. J.F. Taylor (who received his First Clasp to the award, signifying 22 years) and Capt W.B. Siegner. Colonel J. F. Dunlop, Base Commander, presented the decorations Monday afternoon

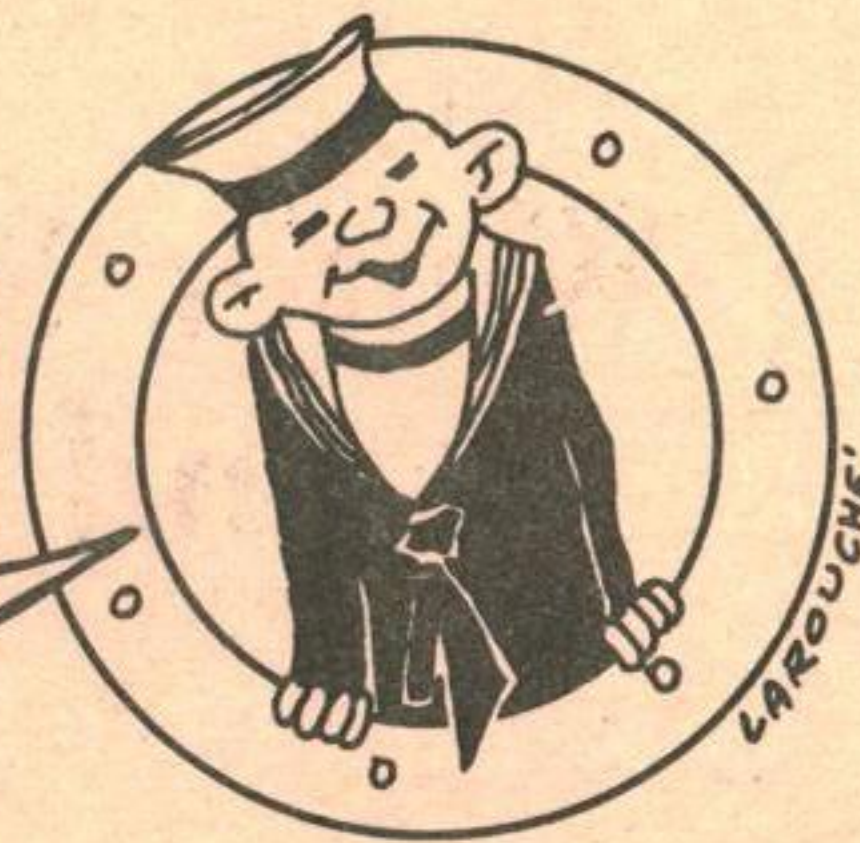
(CF Photo)

4-70



CANEX IS  
ALMOST  
2 1/2 YEARS  
OLD!!

JUST GREAT!!  
BUT WILL IT  
PREVENT MY  
AUNT FROM  
CHASING CARS?



LAROCHE

# 400 CLUB WINNER

15 Apr 70

CPL L. LEONARD

For GOOD Food, and  
Good Service  
VISIT THE

## Lake Inn RESTAURANT

CORNER OF CENTRE ST AND FIRST AVE

# FINLEY TV

— Service —

26 6th Ave, Gimli

642-5386

# GIMLI CAFE

VISIT US FOR  
CHINESE SPECIALTIES.

WE HAVE

ORDERS TO TAKE OUT.

CENTRE STREET

642-9278

# Kardy's HARDWARE

Your FIRST STOP STORE for

HOUSEWARE-GIFTWARE-PAINT

642-8838

# LAKEVIEW Coin Laundry

& DRY CLEANING

66 First Ave.



# Selkirk Funeral Chapel

\*\* serving the Interlake Area  
with dedicated service

\*\* 24-hour Ambulance service

Phone 482-6284

Res. 482-5419

GARTH CLARY, DIRECTOR 209 DUFFERIN AVE.  
SELKIRK, MANITOBA

# CO-OP INSURANCE

AUTO - FIRE - MOTORCYCLE  
3, 6 & 12 Month Policies,  
Issued Immediately

INSURANCE AT COST

PLUS EXTRA BENEFITS

All military personnel  
insurable.

Agent: J.B. Heidinger  
85 5th Ave.  
642-8347

# CRONSHAW'S JEWELRY ENGRAVING

(One Day Service)

WATCH REPAIRS  
JEWELRY REPAIRS

642-5039

# IN MEMORIUM

(to Don Cosshatterprofsky's Great Coat Design)

Of all the benefits and savings that integration may, or may not, have brought into the armed services, (and I'm not prepared to argue that point) the air element must be the service that has gained most. Four items from our kit will shortly pass away into history and they cannot be allowed to go unheralded. These items are: Cap; Service Airman, #6 Uniform Summer, Shoes, Service and last but not least Great Coat, Winter. With the issuing of the Jolly Green Jumpers, these items will gradually disappear and what a relief that is!

The Cap, Service made the scene in the early sixties and displaced the very popular Wedgie or Glen Garry. The design of the Cap, Service had to meet three very rigid requirements. Weight required: It had to weigh at least 4 lbs., It had to be able to keep your feet dry in a rainstorm, and if the occasion arose where you had to ditch in the ocean it had to double as a life raft. It also had to be covered by the old adage "if you can't fight" wear a big hat. The designer managed to incorporate the requirements with ease, also as a built in bonus he made it the ugliest thing since sin. One special feature of the Cap, Service, is that it fits no one, its either too bit or too small. A Cpl in Greenwood once got one that fitted and he had to be let out of the service. They found out that it wasn't the cap that fitted, the guys head was the wrong size.

The #6 Uniform has been around longer than anyone in the service today. It is a direct descendant of the "sackcloth and ashes" of Biblical fame. In fact thats what it is - sackcloth. Designed originally for the Army, one thing about it is you can spend all your time pressing it and it still looks as though it needs pressing. Very useful as a barometer, it wilts as soon as the weather changes and is sopping long before it rains. A particular feature of this article of clothing is that the pants are all made one length and then the legs are chopped off to fit the indiv-

idual, this is why some bottoms are 26" and some are 36". Another rather novel feature is the ability of this particular sackcloth to record the amount of sunshine daily, this is done by a colour change and requires a "Gauge, Colour Sun Time Recorder". Most Met Sections have a pair of pants flying outside and the Recorder Gauge is on issue to Met Sections only. Goodbye Brown Jobs!

The Great Coats cannot be allowed to vacate the scene without a few words about their history. How it came into being was a colossal hoax set up by that old war dog Sgt Shatterproof. It was designed by a Cossack cousin of Shatterproofs known as Don Cosshatterprofsky who at the time had just escaped from behind the Iron Curtain. The old war dog used his influence to get Don a job. The job being to design a great coat, and being a Cossack by trade Don designed a coat fit for a Cossack. The beauty of the great coat is that you can sit on horse back and throw out your coat tails on a cold morning and keep the horse warm; any good Cossack thinks of his horse first.

A great deal of money was spent on the design of the coat, what with testing materials and design work the coat came to 5 million in design costs. On this basis everyone in Ottawa thought it must be a good coat. After 15 million had been made it was realized that the thing was no good, however by that time it was too late. A committee was set up to see what could be done, and they came up with the idea that Airmen sell their cars and buy horses, then the coat tials could be made use of. However, problems of horse parking and feeding loomed great. So it was decided to drop that idea. The authorities pretended that the coat was designed the way they wanted it. However, in case anyone did buy a horse, an order was issued that no one was to sleep within 15' of his horse. Believe it or not, no one ever has.

There is no need to say anything about the shoes, except that the surplus will be snatched up by divers to aid them in getting down to the ocean floor.

ANONYMOUS

## CFB GIMLI AUTO CLUB

OFFERS COMPLETE SERVICE STATION FACILITIES

AT REASONABLE RATES

Winter Snow Tires Removed,  
and Wheels Rotated.

**\$3.00**

— SPECIAL —

Complete brake job - cylinders  
& linings \$25.00 plus parts

Call local 23 for appointment

**MON-FRI 0815 -2100**

**SAT 0900-1700**

SERVICE RESTRICTED TO AUTHORIZED PATRONS OF BASE EXCHANGE

P.S.

SUMMER DRESS  
STARTS 11 MAY  
(would you believe)

## Safety Week May 3 - 9

CHILD SAFETY  
WEEK CAMPAIGN  
SLATED IN MAY

OTTAWA (CFP) -- Concerned about the safety of your children?

So is the Canada Safety Council, which will kick off a week-long, nation-wide Child Safety Week campaign May 3.

And there is one sure way to educate our children council experts say: stricter pre-school supervision and careful teaching of safety rules by parents, at home and out of doors.

The Council's 1968 statistics (latest available) are grim. The car continues to be the number one killer. Car-pedestrian mishaps killed 826 youngsters under 15. Of these, 574 were in the 5-14 year age group -- 342 between the ages of five and nine.

Accidental suffocation took the lives of 347 children 289 of which were under one year. Drowning was third, killing 339, mostly in the 5 to 14-year age group.

The 1968 overall accidental death toll amongst our children was 1,959 with over half a million injured. Since 1961, Ontario's child passenger injuries alone doubled (7,500 to 15,000) and the pedestrian accident rate increased to 13,000 from 10,000.

A 1968 World Health Organization report rates Canada the

worst offender in accidental deaths in the infant and 5-9 year age group. That year, a child was accidentally poisoned every 15 minutes and one needlessly injured every five minutes!

The council says child deaths through carelessness can be reduced. It is up to parents, to show young people by example when walking with them and by discussing safety rules.

Pre-schoolers need clear cut rules such as "...no running in the streets". Patience is a must, too, safety experts say, because children have a significantly different rate of learning. Without patience they may just "turn off" about safety.

While stressing traffic safety, the council points out that 598 children died in home accidents in 1968. Suffocation, fire and explosion were the big killers.

"The life and well-being of every Canadian child must be the concern of every Canadian adult," says national health and welfare's John Munro. He added that Canada's future lies in its children and that only adults can protect them from danger and teach them how to live safely.

So keep alert when driving through the base married quarters areas. Remember, for every service family there are about 2.5 children, many of them school age!

## Nato Exercise - ROYAL FLUSH

Canadian air force pilots and ground crews will participate in the 15th annual NATO photographic reconnaissance competition to be held May 6-15 at Deelan air force base in the Netherlands.

Last year Canada's European reconnaissance squadrons of CF-104 Starfighters won the competition by placing first and second among all competing squadrons. Toronto pilot Captain Scot Clements placed top among 108 NATO military pilots.

This year pilots and photographic interpreters from the United States, Germany, Britain, Belgium, the Netherlands and France will compete with Canadian crews.

Normally the annual Royal Flush competition includes each nation's total reconnaissance forces operating from their home bases. This year, selected crews from a single base will meet at the Netherlands base for the 10-day competition.

The aim of the exercise is to verify that NATO squadrons can produce under pressure accurate intelligence on simulated targets. Each mission will cover three targets.

Awards will be presented at the final ceremony in Deelan May 15 with the top prize, the Gruenther trophy going to the best crew.

# TARGET STORE

Complete Family

Clothing

642-5246

Tues. to Thurs. 9am-6pm  
Friday 9am-7pm  
Saturday 9am-6pm

## Announcing



## Charge Cards

are now honored at

### FINLEY T.V.

26 6 th. Ave. 642-5386

- TAYLOR PHARMACY
- ARNASON FURNITURE
- CRONSHAW JEWELLERS
- INTERLAKE AGENCIES
- PENTHOUSE HAIR BOUTIQUE
- ROBINSON STORE
- TARGET STORE
- TED JENKIN'S CLOTHING
- VIKING PHARMACY
- VIKING MOTOR HOTEL
- MACLEOD'S STORE

Applications are available  
at all participating stores.

Any Merchants Wishing to Join  
the G.M. Charge Card Family,  
Contact Dick Arnason, Mgr.,  
642-8374.

## GIMLI MOVING & STORAGE

- FAST FREIGHT AND EXPRESS TO WINNIPEG BEACH, GIMLI •
- \*\* PACKING \*\* FURNITURE \*\* SHIPPING \*\* •
- GOODS INSURED \* ANYWHERE IN CANADA \* RELIABLE SERVICE •
- Gimli Phone 642-5269 Winnipeg Phone 774-2259 •

# Apothecary's Notebook

N.J.T.

A brief outline on First Aid. THE CARDINAL PRINCIPLES OF FIRST AID.

The four most important rules of first aid, in order of importance, are:

1. Supply oxygen to the lungs;
2. Stop bleeding;
3. Prevent and treat shock; and
4. Prevent further injury.

Every victim of an accident should be regarded with these principles uppermost in mind. Always keep the patient lying down quietly and comfortably, allay his fears with a reassuring manner, and keep him warm. Look for stoppage of breathing, hemorrhage, evidence of poisoning, wounds, burns, fractures, and dislocations, in this order. If a patient is semi-conscious or unconscious following an accident, an injury to the head is often the cause. Remove and loosen the clothing, cut it rather than aggravate the injury.

The following outline of general principles explains the more important considerations.

GENERAL PRINCIPLES: Whether or not the injured person is conscious:

1. Make sure whether he is breathing and, if not, begin artificial respiration immediately;
2. When an injured person is breathing satisfactorily, look carefully for any visible bleeding, and if you find it, take measures to control it either by pressure and bandaging or by a tourniquet; and
3. When breathing is satisfactory and there is no evidence of bleeding, then look for signs of shock and fractured bones.

- 
1. Always treat the most dangerous and urgent condition first. It is helpful to remember the four B's; e.g. Breathing, Bleeding, Broken bones, and Burns.

2. Obtain medical aid quickly; get someone to call the doctor, or get the injured to a doctor or hospital.
3. Keep cool and work fast, but carefully.
4. Loosen tight clothing - collar, waistband or belt.
5. If injured vomits, lower head and turn it to one side, so that the vomited material may not go into the lungs.
6. Don't fail to remove any loose objects from the mouth of an unconscious patient (gum, tobacco, teeth).
7. Don't attempt to give an unconscious person anything to drink.
8. Do not aggravate injury by unnecessary movements.
9. Don't allow the injured with a fracture or suspected fracture to be moved until splints have been applied.
10. Don't overlook shock.
11. Don't burn the injured with an unwrapped hot water bottle or other heated object.
12. Keep the injured quiet, warm, and as comfortable as possible; do not move except to avoid further injury until you are sure of the nature of the injury and have adequate help to move the victim properly.

## VIKING PHARMACY

PHARMACISTS: Ernest Stefanson  
Russ Keeler

We Deliver Say 'CHARGE IT'

with your GM charge card.

The Viking Pharmacy is proud to bring you LOVE cosmetics.

The look of LOVE is beautifully fresh, glowing with nature's own soft tints and highlights. Eleven cosmetic products bring you a great new face - your own.

Phone 642-5504

Emergency phone 642-5253  
642-8359

ROYALE BATHROOM TISSUE

4 pack for 69¢

PALMOLIVE RAPID SHAVE  
reg 1.25

SALE 89¢

RIGHT GUARD ANTI-PERSPIRANT  
reg 1.59

SALE 1.09

GILLETTE PLUS BLADES 5's  
reg 89¢

66¢

CURAD BANDAGES ECONOMY  
reg 98¢

SALE 66¢

HEAD & SHOULDERS SHAMPOO  
reg 1.39

SALE 1.19

KOTEX TAMPONS 10's  
reg 55¢

SALE 44¢

WHITE RAIN HAIR SPRAY  
reg 1.69

SALE 99¢

# Messin' Around

## JUNIOR RANKS' ENTERTAINMENT

Saturday 25 Apr 70  
 WINE AND CHEESE NIGHT  
 Music by "The Jesters"  
 Admission 75¢  
 RESTRICTED DRESS  
 \*\*\*\*\*

Sunday 26 Apr 70  
 MOVIE - "DUFFY" at 1400 hours  
 Come out and try the cocktails,  
 if you haven't already done so.  
 \*\*\*\*\*

## JUNIOR RANKS DINING-IN NIGHT

Saturday 23 May 70  
 Cocktails at 1930 hours  
 Supper at 2000 hours  
 Admission is \$3.00 per person  
 Dancing to music supplied by  
 "Barteaux"  
 TICKETS GO ON SALE IN THE JUNIOR  
 RANKS MESS 1 MAY 70

## WO'S and SERGEANTS'

CALENDAR OF EVENTS  
 - MAY 1970 -

### FRIDAY, MAY 1

- T.G.I.F.
- Pieces of Gold
- Games

### SATURDAY, MAY 2

- SPRING BALL
- \$6.00 per couple includes  
Cocktails, Wines, Dinner  
and Dance.
- Live orchestra.
- Dress: Semi-formal
- Registration cut-off  
date: 27 Apr 70.

-Cocktails, 1930  
 MAY 8, 15, 22 & 29

T.G.I.F. as per MAY 1

### SATURDAY, MAY 30

- LOBSTER FEST
- Watch for flier...

# PRESENTING

"The Lord of Life"  
 in a crusade

# ENCOUNTER

with the

Ken  
Campbell



Jim  
Reese

Team



An international  
 and interdenominational team  
 of Canadian Churchmen presenting  
 the ageless message of historic Christianity  
 dynamically relevant to the predicament of modern man.

Thrill to the singing of the great inter-church choir nightly.

at Gimli Elementary School

NIGHTLY at 8:00 pm, Apr 27 - May 1

Ted Jenkins

LADIES

and MEN'S WEAR



it's a

Christina

DIVE RIGHT

IN

BUT FIRST MAKE SURE YOU'RE

IN

a Bathing Suit

FROM

CHRISTINA

\$11.00 to \$15.00

LARGE SELECTION OF  
 ONE AND TWO PIECE .

## G.C.H.S. NEWS



Valerie Ciszewski working as a cashier in the Viking Pharmacy where she has an opportunity to meet new people.

### CHUDD & SONS

Gimli's CHRYSLER Dealer

SHELL oil products  
- 642-5329

## Skate Sharpening Concession

Tenders will be accepted until May 31, 1970 for the Skate Sharpening Concession at the Gimli Recreation Centre. The term will be for a period of three years, ending with the 72-73 season. Applications can be addressed to: Mrs. J. Valgardson, Secretary Treasurer, Gimli Recreation Centre, Box 44, Gimli, Manitoba.

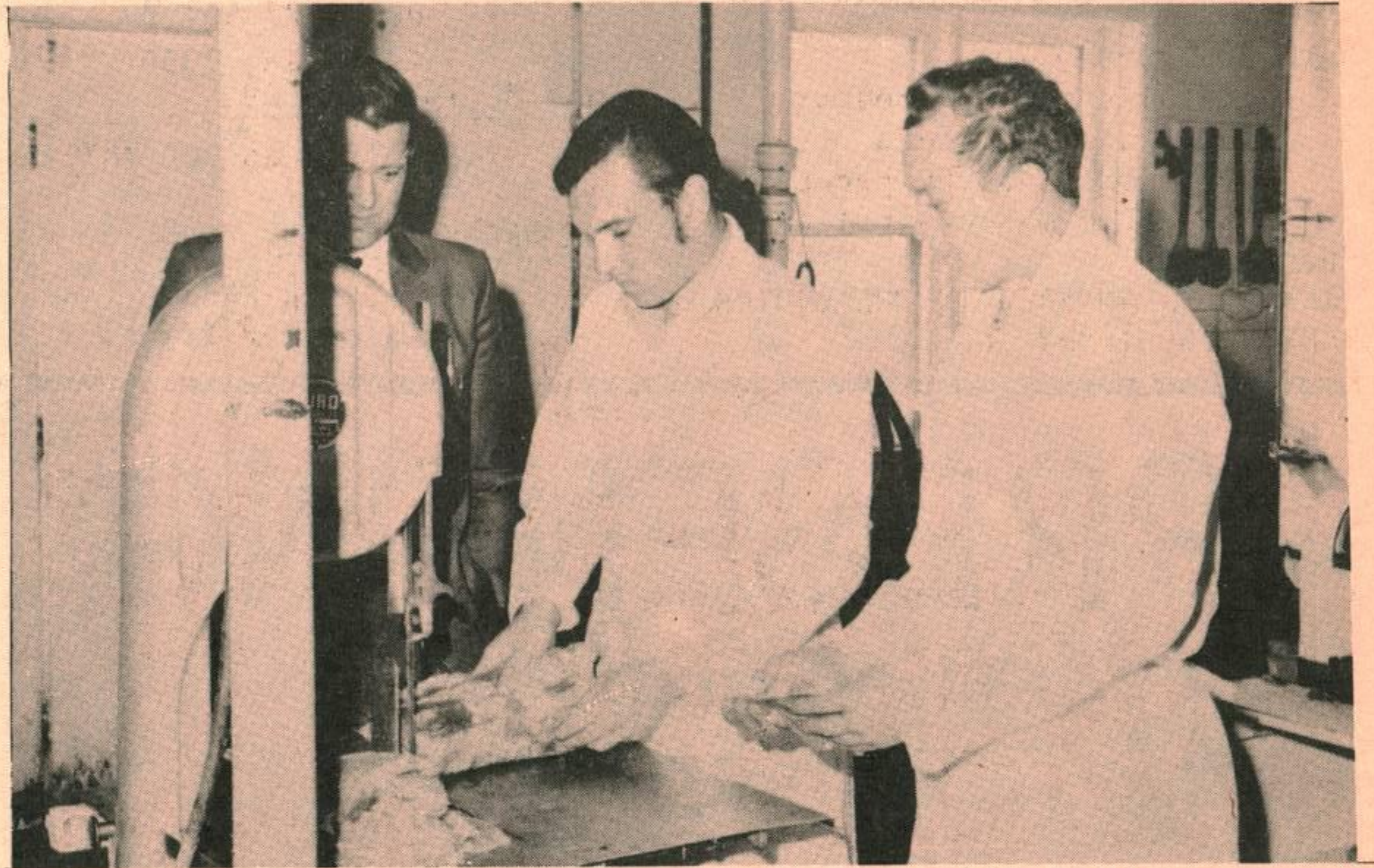
The Occupational Entrance Course at G.C.H.S. was implemented in September, 1967.

The course itself is a separate unique program providing basic background skills so necessary for social and vocational adjustment as an adult.

The subjects offered in Grade 9, 10, 11 are very similar to the regular classes except that the content is more closely related to a teenage level of interest.

In addition, both Grade 10 and 11 spend approximately 40% of the year in Occupational Aspects. This is done during the regular school hours and pupils receive no remuneration.

In Grade 11, the Occupational Aspects comprise 40-50% of the school year. Each student decides which of the six experiences he liked best or would like to pursue and is given further training preferably in this one field.



Danny Barnych receives instruction from Kris Johnson on cutting meat while Mr. Finnon watches.

## The Age of Aquarius

I am sure we do not have to tell you this is the "Age of Aquarius". We are bombarded from all sides with this theme; in advertising, music and other entertainment media.

Although we use astrological expressions like this quite freely, few of us understand their meaning. At the Planetarium we will not go so far as to support astrology since it is based on a number of unfounded superstitions. However, we are well-equipped to explain what it is all about. We will attempt to do this as objectively as possible in our new production, "The Age of Aquarius", which will even provide instructions on casting your own horoscope. The programme will trace the development of astrology and astronomy up to the present and illustrate the differences and similarities

between the two fields. As they follow the changes in man's superstitions and beliefs about the sky through the centuries, the audience will examine paintings on the walls of an ancient Paleolithic cave, visit Athens as it was in 150 B.C. and watch a sunrise at Stonehenge.

Program hours for the new season are as follows:

Until end of June:

Sun & Holidays: 1:00, 2:30, 4:00PM  
Mon - Closed (except holidays)  
Tues - Fri: 3:15, 8:00 PM  
Sat - 1:00, 2:30, 4:00, 7:30, 9:00PM

July & August:

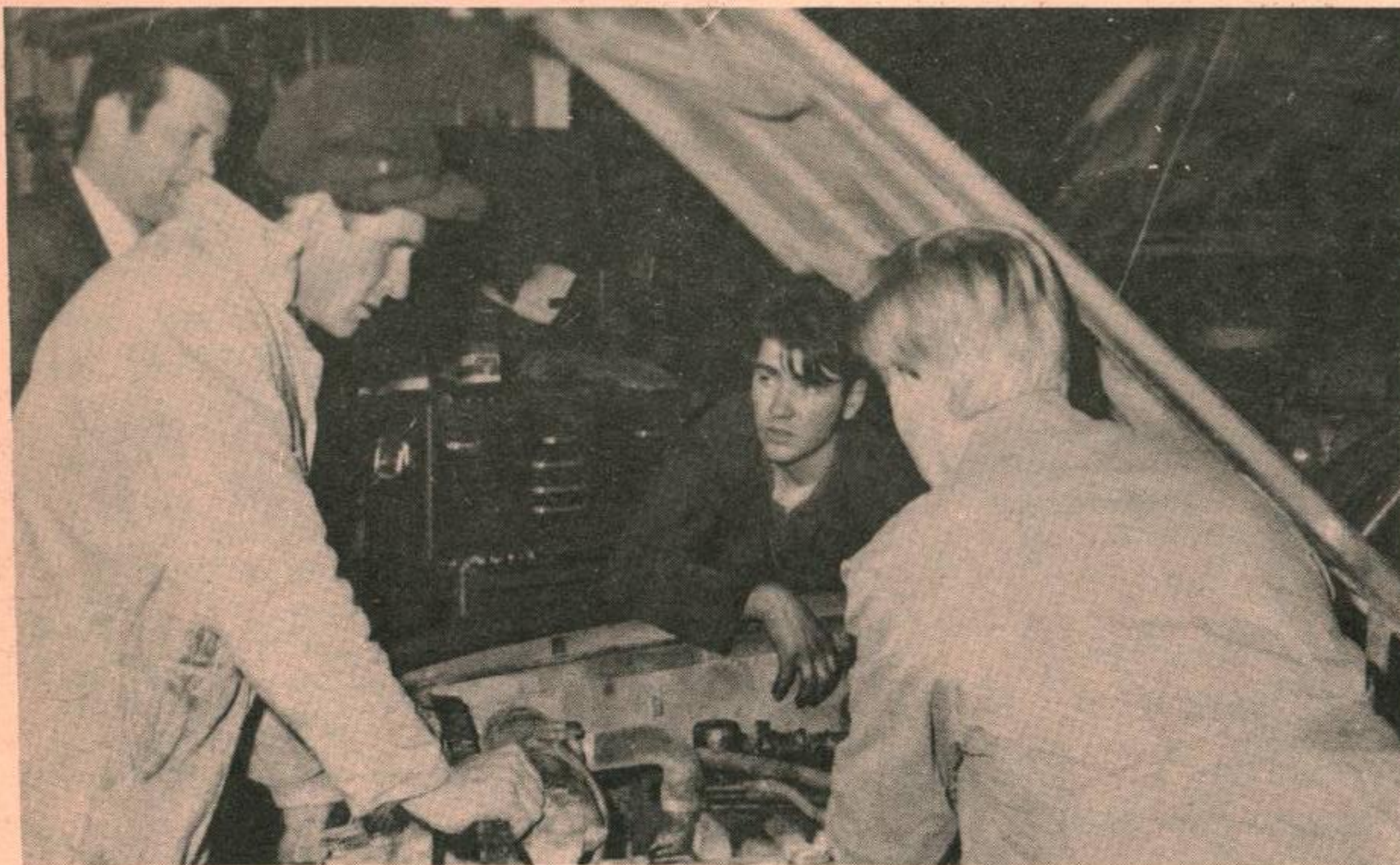
Sat, Sun & Holidays: 1:00, 2:30, 4:00, 7:30, 9:00PM  
Mon - Closed (except holidays)  
Tues - Fri: 11:00 AM, 3:00, 7:30, 9:00 PM

# On-Job-Training

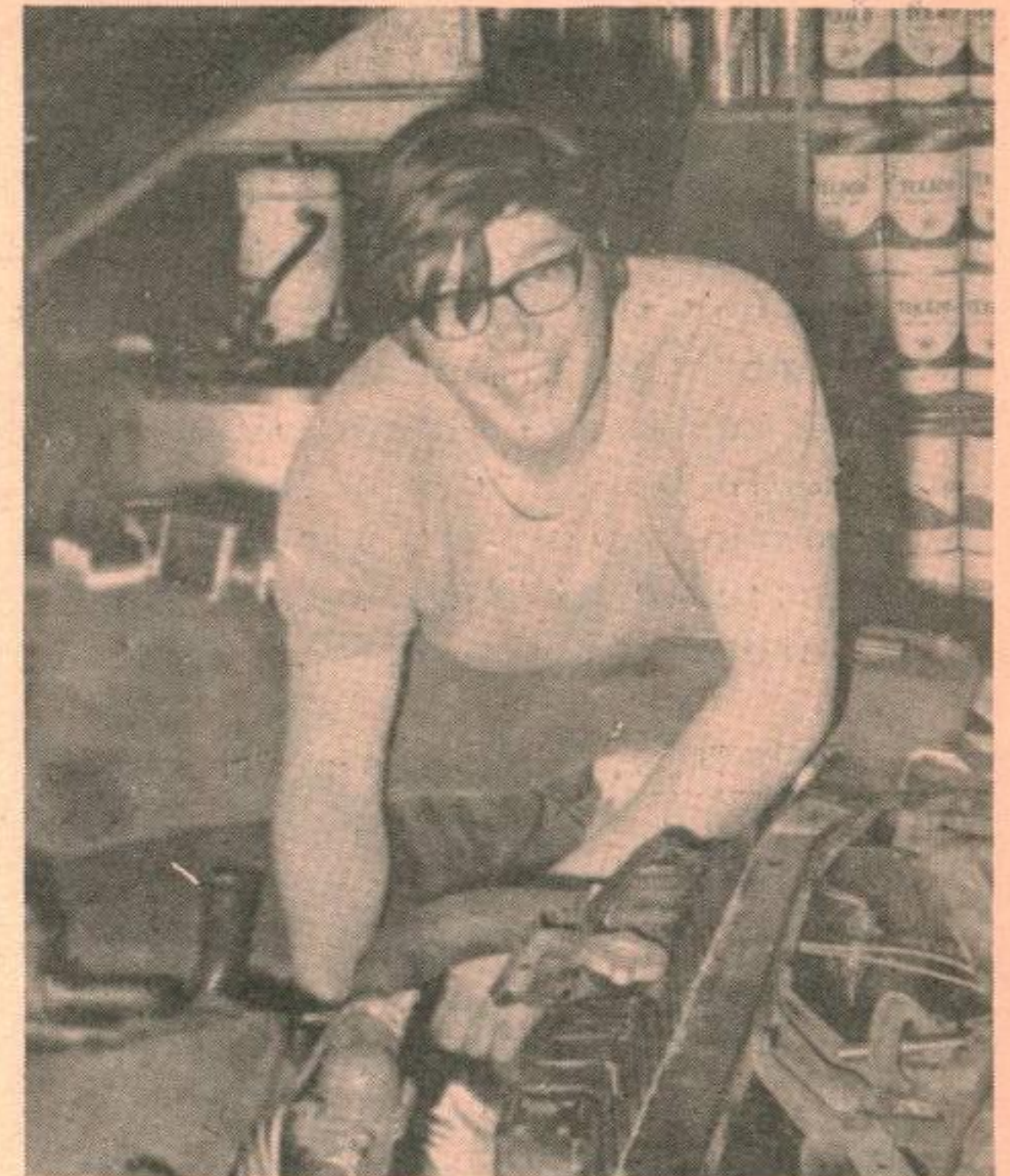
The 'On-the-Job Training' is given in blocks of time to permit the employer to have the student for a longer period of time - - - one month before Christmas, one before Easter, and perhaps the last two months of the school year. As in Grade 10, students receive no remuneration, are visited by the Job Co-ordinator or teacher, and evaluated and trained by employers. At the end of the pupil's four months training it is hoped that the

employer will have trained the student sufficiently to make him a worthwhile employee of his firm.

As in other Courses it is not possible to motivate each and every student to the extent that he will complete his Grade 11 OEC. Those students not wishing to go directly into business aspects are eligible for various courses at M.I.T. (Manitoba Institute of Technology).



Raymond Emerich and Barry Johannson listen as the owner explains about the engine, and once again Mr. Finsson watches from afar.



Fred Bobrovich enjoys working at Gimli Motor Products doing what he likes best.

## GIMLI HOTEL RESTAURANT

New Proprietor -  
Mrs. Christeen Arden

BEST HOME COOKING IN GIMLI

## BASE EXCHANGE

WE ARE OFFERING THIS  
**SPRING CLEAN-UP SPECIAL**  
WITH THE PURCHASE OF  
**A HOOVER CARPET SWEEPER**  
WILL BE INCLUDED  
**A HOOVER SHAMPOO KIT**  
**FREE!!!** (SUITABLE FOR FURNITURE,  
CAR UPHOLSTRY, RUGS, etc)

ALSO WE HAVE MANY HOOVER APPLIANCES ON DISPLAY

JUST IN TIME FOR MOTHER'S DAY

• Mon, Tues and Fri 1130 to 1730

• Wed and Thurs 1130 to 2100

• Sat 1130 to 1600



## The Cobra's Comment

Studded tires must be removed

from your car by

midnight 30 Apr.

# The Summer Scene

Carryl Potter

IN THIS ARTICLE, I would like to present the sports scene at CFB Gimli for the summer of 1970. Listed below are the activities available on or around the base; if your sport or activity is not included give us a call, and complete details will be published.

**AQUATICS:** under the direction of Cpl John Williamson. The program is completely voluntary. During the day, classes will be held - the individual age groups, and registration dates will be announced at a later date. For casual swimmers (when the lake gets too polluted), the pool will be available from 1830 - 2130 Monday through Sunday, as well as 1400 - 1630 Sunday afternoons. Enquiries are directed to Cpl Williamson at 52R2.

**MODEL AIRCRAFT:** Cpl C.R. Stacey is the man to see at local 66. A club as most people know it does not exist. Those on the base who are interested in this activity usually use the north gut (north of No 1 hangar), Sunday afternoons, and some summer evenings when flying is not in progress.

**TENNIS:** No organizer (anyone interested in starting a club?). There are two courts in back of the FPT building. Nets will be put up by the sports staff; a limited supply of racquets is available at sports stores. Must provide your own mosquito repellent.

**GOLF:** The Aspen Park Golf Club is under the direction of Lt Jim Greenough at local 154. First "meeting" of the new season was held April 14 at the recreation centre. See advertisement in this weeks Framfari for help wanted at the club

**SOCCER:** Although mostly an autumn sport, the Gimli team will probably begin practising in July or early August. Announcements will be made prior to the first practice. Sgt Nick Zomar is the man to call, if interested, at local 164.

**FASTBALL:** Organizational meetings for a fastball team have already been held. The coach is Cpl Paul Chellew at the Fire Hall, and the manager is Sgt Stan Robinson.

**SCUBA CLUB:** Cpl Bill Springstead at local 126. Unless the skin diving course and the scuba

course has been taken, you'll have to wait for the fall course. If you have had these courses, you are eligible for your fresh water check out.

**TRACK & FIELD:** It is hoped that enough interest is shown to warrant a club being formed. That is, one person at least. Carryl Potter will help anyone (especially high school students) who is at all inclined towards track and field. Contact at local 37 or 5882.

**SOFTBALL:** Call Cpl Tom Wadey at local 123. Although nothing definite has been organized as yet, softball will be played this year. Watch Framfari for further details.

**SAILING:** The CFB Gimli Sailing Club, although not yet formed as a

club, now exists as a group of people on the Base who are interested in becoming involved in this rapidly growing family sport. Several meetings have been held to bring these people together and have resulted in decisions to enquire about membership in various yachting organizations, and to purchase sailboats. Several sailboat designs are now under study, and the final choice will depend on suitability for training, racing and family sailing. It is expected that the purchase of boats and formation of the club with executive and constitution will take place in the next few months and will exist as an entity within the Gimli Yacht Club, located on the site of the 1967 Pan Am Sailing facilities. For further information contact Capt Graham Hunter at 116.

## Bruins Capture Hockey Title



The Hockey season for the Base Intersection league ended last Thursday with the Bruins winning the final game of the playoffs over the Black Hawks by a score of 1-0.

The shutout by goaltender Charlie Chartrand climaxed a tough battle by the fourth place Bruins who defeated the Red Wings in the semi finals and were tied one game each with the Hawks going into the last of a three game final series.

Major Westphal, President of the Base Recreation council, is shown presenting the new Intersection Hockey Trophy to Bruins Captain 'Mugs' Mulligan whose team has the distinction of being its first winners. The success of the league this year owes much to Capt. Joughin & his Rec Staff and excellent effort by the referees and league President CWO Roemer, but most of all to the competitive spirit and love for the game that seems to stay with Canadians even when the old legs start to slow down.

The teams this season were well balanced, and most games were close, hard-fought contests until the final buzzer.

Team members are: Kneeling (L to R) Doug Gagnon, Joe McInnis, Charlie Chartrand, Des Desveaux and Duke Dutrisac and standing (L to R) Glen Pinsonneault, Red Slater, Romeo Perrier, Jerry McPhee, Al Thompson, Guy Dutil, and coach Bob Daye. Missing are Sam Reed and John Pew. Congratulations Champs! (CF Photo)

# MINOR HOCKEY

Stan Robinson

This being the last week of house league hockey, only 6 teams are still in the running for the trophies. The Bantams having already being decided.

On Mon night in Tom Thumb, the Leafs and Boston tied 2 all. In the second game, Green outscored Canadians 5 to 3. Boroznick and Barry Penziwol each getting two goals for Green. Melvin Biluk scored all three for Canadians, Randy Martin had two assists.

In Bantam playoffs on Tue, Leafs took a 3 to 1 lead in the series with Canadians, on the strength of a 6 to 4 win. Lorne Smith had 2 goals, Reid Kuzik 1 goal 2 assists, Blain Knapik 1 goal 2 assists, and James Prise 1 goal and 1 assist, for Leafs. Scoring for Canadians Ken Kernstead 2 goals 1 assist, Ron Krulicki with 1 goal 1 assist.

In Wee Wee on Thur Boston White where eliminated when Canadians swamped them 7 to 0. Scott Valgardson scored 4 goals, Bradly Krulicki had 1 goal and 2 assists, Steven Horseman got the shutout. Boston Black where also eliminated by Green with Green taking the game 4 to 2. Ronnie Warcimaga had 3 goals for Green. In the last game the other finalist to go against Green was decided when Red Wings shutout Leafs 8 to 0. Dwayne Gemmel had 6 goals, Tim Gottfried earned the shutout.

On Sat in Tom Thumb Boston beat Green 3 to 2. Dale Martin had 2 goals for Boston, Tim Valgardson had 1 goal 1 assist for Green. In the second game Canadians beat Leafs 4 to 1 with Russell Wilson losing his shutout with two seconds to go. Terry Robinson had 1 goal 1 assist.

In Wee Wee the finals started between Green and Red Wings. The Red Wings took the first game of the best of 3 finals. No stats available.

In Bantam Leafs got past Canadians 6 to 4 to win the series 4 games to 1. Scoring for Leafs, Blain Knapik 3 goals 1 assist, Reid Kuzik 2 goals 2 assists, James Prise 1 goal.

For Canadians, Glen Aldwinckle 1 goal 2 assist, Ron Krulicki 2 assists, Scott Rodgers 1 goal.

In a Wee Wee allstar exhibition game against Portage our boys won 6 to 4 with Melvin Biluk getting 5 goals, and Sylvester the other goal.

In the evening our Bantams played an exhibition game against Selkirk Bantams and after a slow start in which Selkirk took a 6 to 0 lead, our boys came back in the third period and played well but went down to defeat 7 to 2. Lee Newport scored both goals for Gimli.

Don't forget to get your tickets for the banquet!

## CFB GIMLI

### RIFLE AND PISTOL ASSOCIATION

General meeting and election of officers. 28 April, 7 PM, OFT Conference Rm. All interested personnel please attend. Also, presentation of trophies to winners of Jr. Carnival Shoot for 1970.

NOTE: The Range will NOT be open to regular shooting this occasion only.

### Annual Early Bird Golf Tourney

The Annual Early Bird Golf Tournament will be held at the Wasagaming Golf Course, Riding Mountain National Park (Clear Lake) 30 - 31 May 1970. Individual prizes will be presented.

The Tournament is open to all serving personnel and permanent DND civilians at all Zone 3 Bases and Stations. Entry Forms may be obtained at the Rec Centre. ENTRIES WILL BE ACCEPTED IN ORDER RECEIVED.

Arrangements have been made for private lodge and motel accommodation at \$2.50 (lodge) and \$3.00 (motel) per person per night. Personnel requiring such accommodation are to register at Doner's Lodge (TA-WA-PIT) Clear Lake. Cooking facilities exist in motel units, and meals at reasonable prices are available at the Golf Course, cafes, etc.

**FEES** - The entrance and green fee for serving personnel and DND employees will be \$10.00 per person (Fees may be paid at CFB Gimli Rec Centre. FOR FURTHER INFORMATION PLEASE CONTACT THE BASE REC CENTRE.

## Greenskeeper-Icemaker

### CFB EDMONTON

CFB Edmonton has an immediate requirement for the services of a full time Greenskeeper and Ice-maker. Salary about 7,000 dollars. Two weeks Holiday with pay. Workmans compensation benefits provided. Fifty percent of unemployment insurance. Premiums provided.

Nine-Hole Golf Course: Four-Sheet Curling Rink. Applicants need not be fully qualified in both skills, but preference will be given to skilled Greenskeepers. Interested persons are requested to apply to B PERS ADMO, CFB Edmonton stating qualifications and earliest date available.

## IN-SERVICE COURSE

### Softball Coaches

The subject course will be conducted at the Canadian Forces School of Physical Education & Recreation (27 May - 3 June).

Candidates must meet the following requirements:

- Meet with Medical Requirements (if nominated must report to Base MIR for a Physical examination.
- Must be recommended by BPERO.
- Ensure they are excused by their section head so they may proceed on course.

Interested personnel contact Rec Centre prior or by 27 Apr, as nominations must reach Training Command by 27 Apr.



# Gimli Florist

"FLOWERS FOR ALL OCCASIONS"

PHONE 642-5298  
78 FIRST STREET

ORDER 2 WEEKS EARLY AND

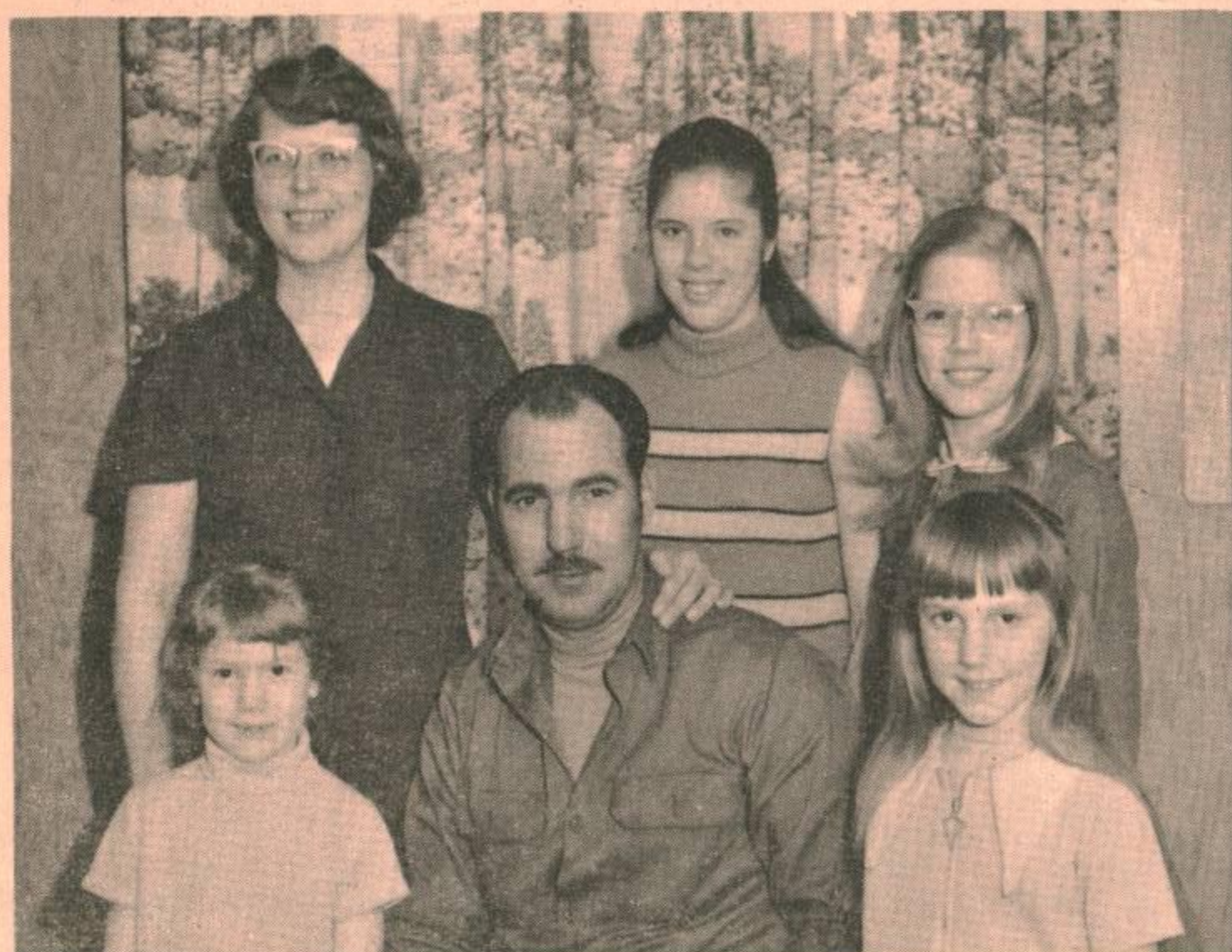
# SAVE

ON TELEGRAPH CHARGES



# MEET YOUR NEIGHBOUR

- John Bryson



MR. & MRS. DON CAMDEN AND FAMILY

Don was born in 1938 in Omaha, Nebraska. Two years later his family moved to a farm in Iowa. He went to school in a small town called Neola. At the age of 16 he went to work as a mechanic, and at age 20, drove a city bus for three years. After that he was a manager for a company that sold foreign sports cars. In 1967 the Camden family came to Canada to work for 'Flite Drilling Company'. This work took Don to Northern Canada. In '68 Don came to Gimli and worked as a mechanic out of the B/A Garage. He now works at the Base as head mechanic in the CFB Gimli Auto Club. Don resides in south Gimli with his wife Pat, and four daughters, Cindy 14, Lori 12, Dawn 7, and Melanie 6.



SGT. & MRS. STAN ROBINSON AND FAMILY

Stan was born at Wapella, Sask., and later moved to Haney, B.C. He joined the RCAF in 1952. Stan went to Camp Borden for his training as an Instrument and Electrical Technician. In '53 he went to North Bay, and in '54 to Calgary. Later that same year he was transferred to 2 Wing, France. It was while Stan was in France that he met Paddy Poyz-bull and in 1957 was married. In '58 Stan was sent to Cold Lake and in '59 a son, Terry, was born. In '61 the Robinson family was moved to Ottawa and in '62 a daughter, Joanne, came along. 1964 saw Stan and family at CGS London and in '65, Marville, France. When the base closed there, they went to Lahr. In '68 they came to Gimli and live in the Evergreen Apts. Stan is a member of Rotary Club and is very interested in Minor Hockey.

## BASE FASTBALL TEAM

### WORKOUTS

The Base Team to represent CFB Gimli in the Interlake Fastball League has started team workouts in the Base Rec Centre. These workouts are being held every Tuesday and Thursday at 1630 hrs and will continue until the weather is suitable to move outdoors. The team this year is being coached by Cpl Tappay and managed by Sgt Robinson. All potential players are requested to attend as many sessions as possible. **EVERYONE INVITED.** If you cannot make the workouts but are interested in playing contact Sgt Robinson at Loc 143.

Ball players - please note that the Zone 3 Team that will represent CFB Gimli will be basically the team playing in the Interlake League.

## MEETING

### LIGHT HORSE ASSOC'N

There will be a general meeting of the Lakeshore Light Horse Association on 28 April at 0800 hours at the home of Mrs. Barbara Walton (1 mile North of the Farmer's Community Hall which is on Airport Road). Everyone welcome.

### SPECIAL DISCOUNT

MacPherson's Stables of Winnipeg Beach are offering a 40% discount for horsemanship/riding lessons to members of the Lakeshore Light Horse Association. This offer is for a limited time only. If interested please contact Mrs. Dolores MacPherson at Winnipeg Beach.

P.S.: If you wish to become a member of the Horse Association, contact Janet Sears at Box 419, Aspen Park or phone 5627 after 5:30 PM.

# ASTRA CREDIT UNION

## INSURANCE

FOR OWNERS OF AUTOS, HOMES,

OR HOME FURNISHINGS

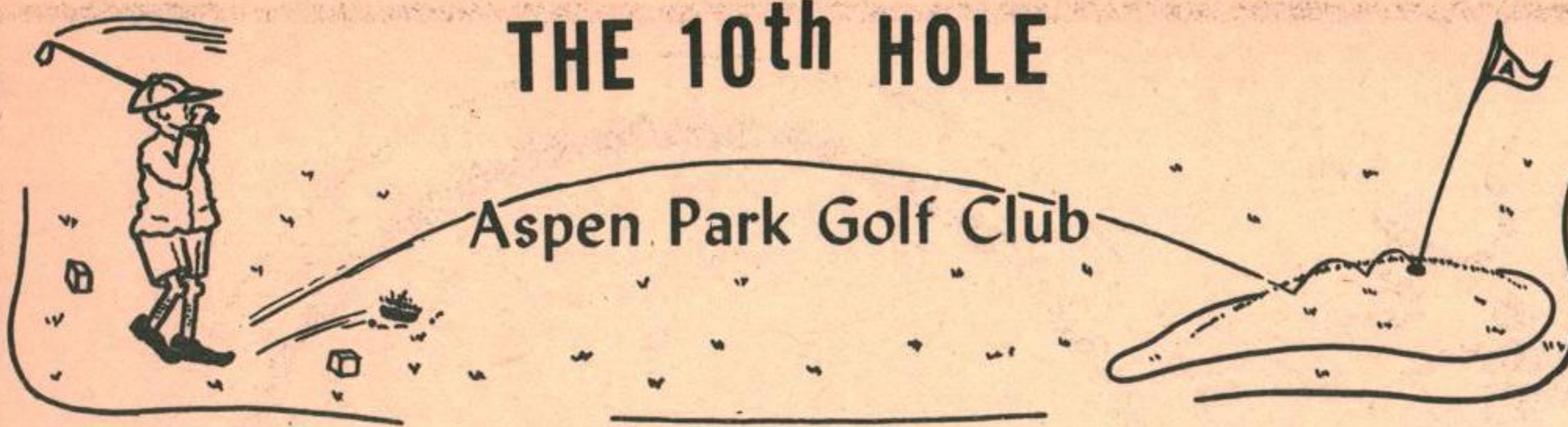
Do you want your personal insurance handled in a businesslike manner?

SEE YOUR CREDIT UNION REPRESENTATIVE

**LEAGUE SERVICES Ltd.**

Personal Insurance in the Canadian Tradition

Tues. Afternoons 1-3 P.M.



Although many of us in Gimli (let alone Manitoba) would argue the point - FACTS ARE FACTS.

- Fact 1 - Spring is here
- Fact 2 - Summer follows Spring
- Fact 3 - During these seasons outdoor sports are in vogue
- Fact 4 - Golf is a Summer sport
- Fact 5 - Base Gimli has a Golf Course
- Fact 6 - The following is the latest 'HOT GEN' on your...

#### ASPEN PARK GOLF CLUB

Last season your Golf Committee initiated construction and improvements to the Aspen Park Golf Club. We are very optimistic (weather permitting) to have these improvements completed and in operation early this season. Some of the changes are as follows:

- Two new FAIRWAYS. (One 520 yds for you long hitters, Two others over 300 yds).
- Increasing overall yardage to raise the PAR from 29 to 34 for nine holes.
- Improving and rebuilding all TEE'S.
- Re-locating PRO-SHOP for better services and Golf atmosphere.
- Practise putting area at PRO-SHO (will be completed later in season).

- New rental equipment (GOLF CARTS as well).
- Club STORAGE (club cleaning available at min charge).
- New MAINTENANCE equipment and WATERING system.
- More and better golf incidentals available at Pro-Shop.
- A QUALIFIED Golf Course Superintendent to keep our course up to Par.

As you can see a lot of work has gone in to improving this Base facility, and a lot of work is still required however, and your patience in this matter is requested.

We are proposing to open the Course this year (as soon as possible) using the old course, to enable us to complete the renovations. We are hopeful to have our GRAND OPENING sometime in early June (weather permitting).

As with any major improvement to Base facilities money requirements inevitably change. Fortunately we have kept these to a minimum and they are far from drastic. The Membership Rates this year are as follows:

- Service Family - \$35/season
- Service Single - \$25/season
- Service Student - \$10/season
- Civilian Family (2) - \$65/sea. (\$10 for each additional)
- Civilian Single - \$50/season

\*\*Civilian Honorary Mess Members are considered under Civilian Rates.

We have a very promising Committee this year but as always there is room for extra help. If you are interested in helping out in any capacity regardless of your playing ability (The Chairman is a one season duffer) we definitely have room for you. For further information contact any of the following:

- Chairman - Lt Jim Greenough  
- Local 154
- V/Chairman - Capt Don Caldwell  
- L173
- Secretary - WO Andy Anderson  
- L32R2
- Handicaps - CWO Fred Chorney  
- L175
- Publicity - Cpl Sandy Herrick  
- L169
- Advisory - Capt Pete Brown  
- L11  
- Capt Bill Joughin  
- L52
- Pro Shop - MWO Geo Levesque  
- L32

That's it for now folks. Keep an eye on THE 10th HOLE for more

ASPEN PARK GOLF CLUB NEWS

#### BASE REC CENTRE

#### Summer Hours

The Base Rec Centre will commence Summer hours Mon 4 May 70. Hours of operation:  
Mon - Fri - 0800 -1700 hours  
Effective 1 May 70 the Rec Centre will be closed during the evenings.

## Ted Jenkins LADIES and MEN'S WEAR

We have 8 only GOLF JACKETS  
Regularly priced at  
\$7.95 - \$9.95  
NOW PRICED AT A LOW \$3.49  
(These are seconds with  
short sleeves!!)

## Summer Employment

GIMLI BEACH - 1 July - 3 Sept  
1 Chief Patrol (male)  
-\$2.00 per hr.  
2 Assistant Patrols (male)  
-\$1.50 - \$1.75 per hr  
2 Water Safety Instructors  
(female)- \$65.00 per wk

Applications to be sent with  
all particulars by 15 May 70,  
to: Mr. J.A. Sesak, Box 236,  
Aspen Park, Manitoba

#### CO-OP INSURANCE

We deal in AUTO, HOME  
FURNISHING and CASUALTY INSURANCE

Mrs. Rae Valgardson

#### GIMLI CREDIT UNION

10 am to 4pm

Phone 642-5028 or  
642-5878 after 5 pm



**PLEASE NOTE** the following date changes for  
 your **SPRING SAFETY CHECK**  
 at the Base Auto Club.

**4-12 May** (EXCLUDING WEEKEND)

**0900-1130**

**1315-1600**

WATCH FUTURE R.O.'s FOR FURTHER INFORMATION.

# BAKE SALE

at the

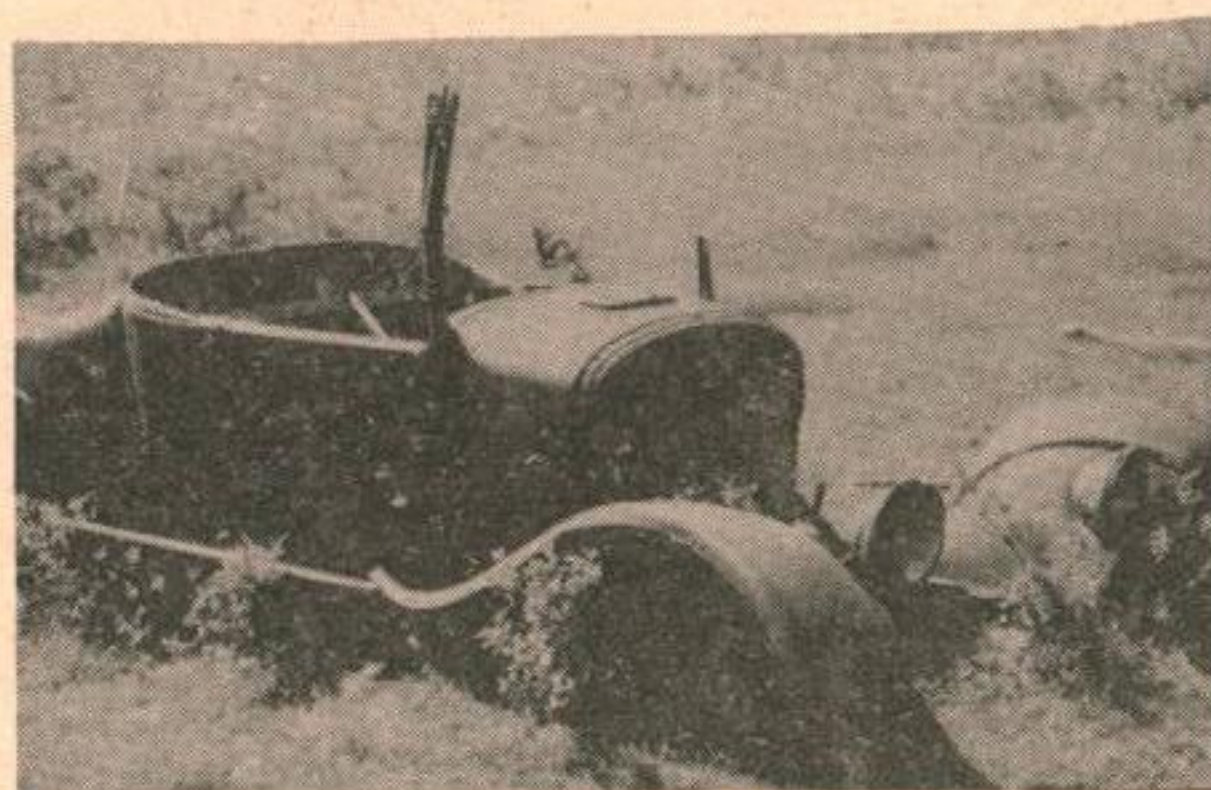
VALGARDSON BUILDING

on

SATURDAY MAY 2nd at 2pm

SPONSORED BY

THE GIMLI KINETTES



## ANTIQUE CAR FOR SALE

ANTIQUE CAR / HOT ROD

'27 Ford Rdstr Body + Model 'A' frame, '57 Ford rear end, stored in barn at Gimli. Cntct; Capt. Best, Box 325 Aspen Park, Man. Tel. 642-8232.

Extended to 31 May 70

The

## ASTRA CREDIT UNION

Centennial Offer To Members  
TERM DEPOSIT CERTIFICATES

- \* \$5,000.00 units
- \* 1 year term
- \* No early withdrawal penalty

1907 PORTAGE AVE.  
888-8690

WESTWIN  
832-5082

**9%**

Keep your money in your community

# CENTENNIAL FLASHBACK — Tribute to Settlers of Gimli Area

## CENTENNIAL FLASHBACK

Reminiscences of Simon Simonson  
Translated by W. Kristjanson  
Edited by Col. J. F. Dunlop

### PART VIII

About the tenth of April (1876), I began the building of my house, with four men to help. I had already cut the logs required, and the work of building took two days.

The snow had subsided but little, and fresh snow fell at the beginning of May, and frosts continued until June. On the ninth of May there was a thunderstorm, with an extremely heavy downpour of rain. We were unable to keep a stitch dry in the clayey leakage of Skapti's newly plastered house. The rain commenced about bed-time, and we stood nearly kneedeep in water for most of the night. We were unable to protect our bedclothes from the rain, and they were soaked. Such was the comfort of most of the homes at that time, and this state of affairs continued for some years to come, in a number of cases.

Then commenced the seeding of beans and potatoes. It was rather difficult work clearing the forest and burning the trees, for the ground was very wet. Hoeing was difficult, too, for the ground was a solid tangle of roots.

The yield was small, and in addition there were a great many

destructive small creatures to spoil the crop.

About the middle of June the potatoes were planted. It had not been possible to bring the seed in before, as the ice remained on the lake till the twenty-fourth of May.

After the middle of June, Mundi and I went to Winnipeg. My Valdis was then employed at a boarding-house. She was not happily situated, for the work was too hard. In addition to that, she was defrauded of a goodly portion of the wages promised her, which was in keeping with what often happened during those first years.

Then we set up a tent and took in boarders, but the undertaking was not profitable; consequently I obtained work in connection with a large ditch which was then under way along Main Street. The work was exceedingly hard and we were driven relentlessly, so that only the strong could stand it. Later I worked for Taylor at making flat-boats for the party of Icelanders whose arrival from the homeland was then anticipated. The wages were not high, but generally they were better for women in domestic service than elsewhere--for at that time there was little prosperity in the land.

On the eighth of August, Sigtryggur arrived in Winnipeg, with the first group of Icelanders to arrive that summer, numbering

upwards of 750. Later, on the fifteenth of the month, Halldor Briem arrived with nearly 450. I mention the names of these two for they were the conductors of the groups. It may well be imagined that we who had been away from home for two years, and not in the best of circumstances, welcomed this addition to our group.

The new-comers were not much better off on their arrival than we had been when we first came to this part of the country, except for the fact that summer was not far advanced when they came. Their group was much larger, and their baggage many times greater than ours, but they had to rely on the same inadequate means of transportation. They were complete strangers to the manner of life and the methods of work, which differed totally in the Old Country. Many were ill from the effects of their long journey, which they had made without a break, travelling by way of England, while we had proceeded direct to Quebec.

I rough-built a boat and purchased various articles, including a gun, a stove (which had been used, but was strong, and which we kept seventeen or eighteen years and was afterwards used by my brother Jonas), a saw, and various other articles. I also bought two young pigs, but both died, for they did not thrive on their diet of fish.

Rings are for love.



**BEN MOSS**

JEWELLERS EST. 1910

HEAD OFFICE:  
PORTAGE AVENUE  
& DONALD STREET  
PHONE 942-0735

MALL CENTRE  
477 PORTAGE AVENUE

WESTWOOD SHOPPING CENTRE  
3298 PORTAGE AVENUE

**WAYNE'S IGA**

The Store That Cares

Specializing In

Table Rite Redbrand

Steer Beef

&

Table Fresh Produce

**NORTH AMERICAN  
LIFE ASSURANCE COMPANY**  
A Canadian Mutual Company

*Providing programing,  
Consulting, and Service  
for Life, Auto, Fire  
and General Insurance.*

*Visiting Base Library,  
CFB Gimli, on Mondays.*

**G.F. (Kelly) Laliberte**

**I. (IKE) Chamish**

*219 Kennedy St.  
Winnipeg, WH. 3-1526.*

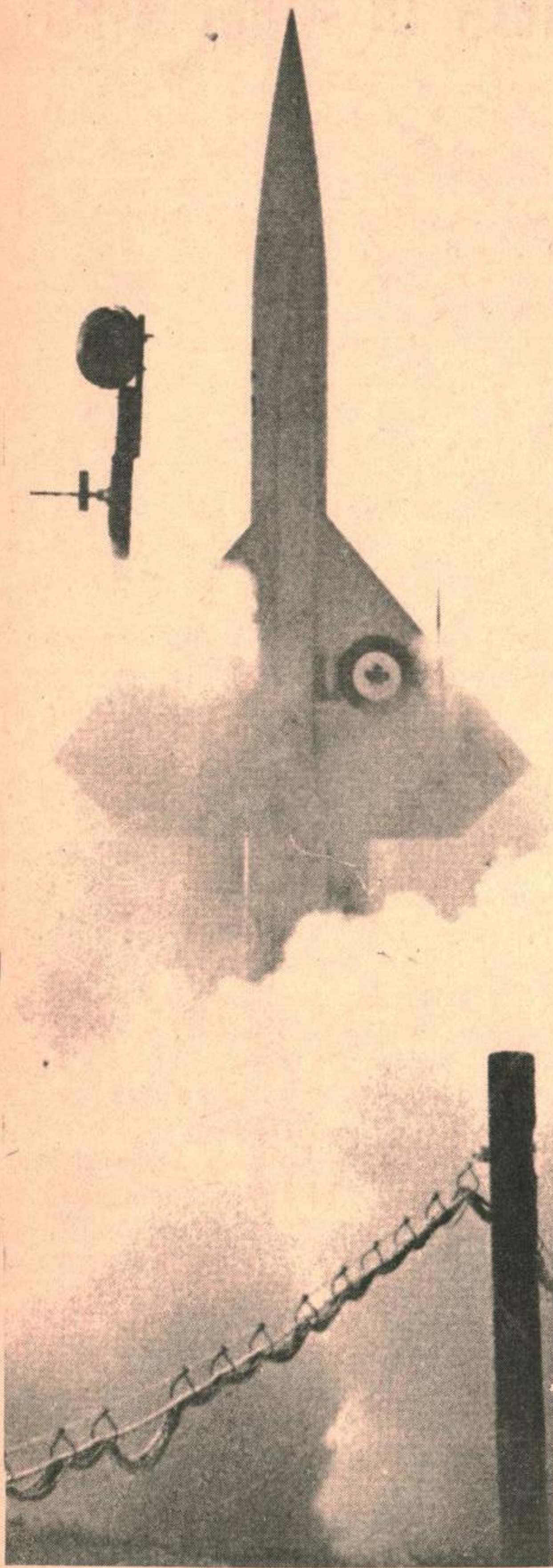
# NATIONAL BANDSMEN to WINNIPEG

WINNIPEG (CFP) -- The official United States Army Field Band and Soldiers' Chorus will appear with the National Canadian Armed Forces Band in two public concerts May 11 and 12 in the Centennial Concert Hall here, the Manitoba Centennial Corporation has announced.

Largest of nine major Canadian military bands, the Canadian Forces Band has 92 musicians. The band includes five sections: ceremonial, symphonic concert, serenade of strings, ambassadors dance orchestra and heraldic trumpet.

The band was formed in July 1968, and is directed by Lt.-Cdr. William J. Gordon. It has twice toured in European music festivals and played at the opening of the National Arts Centre in Ottawa. An album of its music is available from Capital Records.

Nicknamed the "Kings of the Highway", the U.S. Army Field Band has travelled more than one million miles since its formation in 1946. In 1969, the band presented more than 400 concerts to an audience of almost two million people. Notable performances have included concerts at the "Man and His World Exposition" and "EXPO '67" in Montreal, the New York and Seattle's World Fairs, the Mormon Tabernacle in Salt Lake City and the Alaskan Centennial in Anchorage. The Soldier's Chorus, under the direction of Sergeant Major Gene Coughlin, has also performed on network radio and television, and in motion pictures.



CANADIAN DEFENDER

A Canadian Armed Forces Bomarc interceptor missile was recently launched on Santa Rosa Island, located off Florida's northwest coast. The launch was the first American-Canadian missile firing in the United States this year. Completion of the launch marked the end of a missile training exercise for 35 Canadian officers and enlisted men assigned to the 446 Surface-to-Air Missile Squadron, based at North Bay, Ontario. The 446 Squadron, and the 447 Squadron at La Macaza, Quebec, are under operational control of the 22nd NORAD Region headquarters at North Bay.

## Gimli Tailor

SUITS & UNIFORMS  
-made to measure  
-four to six weeks

Centre St and First Ave., Gimli

## 'Four Seasons'

TRAILERS

*Firman Brothers*

Bus: 642-5007  
Res: Paul Firman 8857

## GIMLI HOTEL

OVERNIGHT ACCOMODATION

REASONABLE RATES

ENTERTAINMENT

WED THURS FRI SAT

## DIANE'S BEAUTY SALON

DIANE'S BEAUTY SALON at 41  
Second Ave. is open for your convenience Tuesday through Saturday  
I am also open after supper. .  
Tints, Perms, and Wig Styling  
are our specialty.

For appointments call  
642-8850

## CENTRAL BAKERY

BAKED FRESH DAILY

— Seed Bread — Irish & Rye Bread —

. . 16 oz. loaf, 24¢ each or 10/\$2.20

Sliced Bread . . 5/\$1.10

Pan BREAD . . 5/\$1.00

**Homemade Breads, Buns, & Cakes**  
**Imported Chocolates & Cheeses**

HOT PIZZA TO GO — Baked to your order in 15 min.

# Yours, Sir!

Dear Fredd,

While wallowing in NPF popcorn I felt it appropriate to reply to your Theatre lament. The Starlite Theatre is operated for the enjoyment of Base personnel and their families. It is difficult to please everyone but we are always open to suggestions. The policy of having a short intermission (10 min) was implemented for two reasons: to allow smokers to have a break and enjoy their nasty habit; and to permit the sweet tooths to replenish their supplies at our well stocked and I think well run candy counter. Since your note, the Theatre manager and I have questioned many persons re their likes and dislikes. So far the score is about even. Many like the intermission and many others like yourself do not.

Your point that intermission came after one hour and 10 minutes of a one hour 50 minute movie is well taken. The reason of course is that it is easier to stop at the end of a reel. Regardless, we will try to correct this and attempt to stop the movie at a dull spot roughly at half time. The shorter movies will not have an intermission break.

In any event, majority should rule. A short and simple questionnaire will be included in this issue and I encourage all theatre goers to indicate their likes and dislikes on it. You will note they have been addressed personally to you Fredd. We value highly your integrity and trust you will tabulate the answers correctly and forward to me. If the majority wants change, it will be promptly arranged.

We regret that it is necessary to increase the prices on some of the better shows. Unfortunately the film rental service will not give us these shows unless we do agree to charge a minimum fee which they lay down. It's still a good deal and probably less than half the price charged in the big city.

Well Fredd, my popcorns all gone but I know where I can get more and see a movie at the same time. Hope to see you there. We need your patronage.

Yours,  
Sir

TO: FREDD  
C/O FRAMFARI PRESS

**STARLITE THEATRE QUESTIONNAIRE**  
(Please check off as applicable)

- |   | YES                      | NO                       |
|---|--------------------------|--------------------------|
| 1. Do you like the idea of a short intermission during movies at the Starlite Theatre?                                      | <input type="checkbox"/> | <input type="checkbox"/> |
| 2. Do you favour the present show days and times? (Sun, Mon, Thur, Fri, 8 PM, and Sat 1:30 PM) If not please comment below. | <input type="checkbox"/> | <input type="checkbox"/> |
| 3. Is the Popcorn too salty?  | <input type="checkbox"/> | <input type="checkbox"/> |

Comments:

Please tear out and send to Fredd.

## Guiding

A tour of the George Johnson Memorial Hospital highlighted the April 13th meeting of the 2nd Co. Girl Guides. The girls travelled by bus, taking with them books, magazines, puzzles, and colouring books collected for the patients.

The Captain of the 2nd Co., who is also a member of the

nursing staff, conducted the girls around the hospital. Through the Nursery window the girls were thrilled to see the babies shown by Sister Bernard. Later, she displayed the architect's picture of the addition to the hospital.

Thanks to the Hospital Staff for allowing this visit.

Upon returning to Guide Hall, Gloria Harrison received her Second Class Badge. The Brown Owl of the 2nd Pack provided a treat of hot chocolate.

## How to shop from Simpsons-Sears Catalogues

By phone



GIMLI

SIMPSON-SEARS CATALOGUE

ORDER OFFICE

642-5161

## The MART (Cont.)

### AUTOMOBILE FOR SALE

Transferred- must sell 1965 Ford Comet. 6 cyl., std trans, radio, new front suspension, brakes, shocks. Any reasonable offer considered. Ph. 642-5815.

*This Space Intentionally Left Blank*

## Brownies

On Wed., April 15th, Baden-Powell Hall was the scene of a Fly-Up. Teresa Wheeler received her Brownie wings which were pinned on by her mother. Patrol Leader, Marcia Corkum, welcomed the new Guide to the Canary Patrol of the 2nd Co..

Mrs. Eaton, Brownie Leader, wished Teresa good luck on behalf of the Pack.

Games and camp-fire songs were enjoyed by all.

# Spring

cleaning  
time at

## WINNIPEG PIANO CO LTD

383 PORTAGE  
(AT EDMONTON)  
PHONE 942-5404



Your family's pleasures will soar to new heights when you bring home a Lowrey Satellite. Here's a spinet model home organ with two keyboards and a 13-note pedalboard ... at a price that's really down to earth.

REG \$838.50

SPECIAL

\$719.00



LOWREY  
Tempest

REVERBERATING  
RHYTHM  
(Model TS-400 Only)  
Reverb  
Bass Drum  
Snare Drum  
Brush Cymbal  
Crash Cymbal  
Tom Tom  
Bongo  
Block  
Clave  
Tom Tom—Bongo—  
Block

REG \$1,995.00

SPECIAL

\$1,550.00

LOWREY HOLIDAY DELUXE (DEMO) REG \$2,395.00

SPECIAL \$1,775.00

FARFISA 3010

REG \$599.00

SPECIAL \$519.00

PIANO TRADES WELCOME

TRADE INS

YAMAHA B-2, ROCKMATE, 1 MO. OLD

SPECIAL \$499.00

YAMAHA C-2, ONLY 10 MO. OLD

SPECIAL \$1,295.00

FARFISA LEADER

\$419.00

FINE SELECTION RECONDITIONED PIANOS From \$295.00

PANASONIC FM STEREO  
& AM RADIO WITH STEREO CASSETTE



AM/FM and FM stereo radio in walnut cabinetry. Features illuminated and "Black-Out" dial face. Separate 6 1/2" speaker system. 12 Watts PMP. Slide-rule tuning. "Stereo" indicator. Separate bass, treble controls. Tuned RF stage for FM. FET tuner. Solid-State engineered. Jacks for headphone, phono, Rec. out. Tape in and FM ext. antenna. CSA approved.

SPECIAL \$199.00

(PAYMENTS AS LOW AS \$7.90 per MONTH)



RE-7060C  
AM/FM and FM stereo radio with 4-track stereo cassette recorder. Walnut wood and chrome trim. Features "Black-Out" and illuminated dial face. Slide-rule tuning. Twin 6 1/2" dynamic speakers. Continuous tone control. "Stereo" indicator. FET tuner. AFC on FM. Solid-State engineered. Complete with microphone and cassette tape. CSA approved.

ONLY \$309.95

(PAY ONLY \$12.30 per MONTH)

PHILIPS  
COLOR TELEVISION  
1970



25"

Color Console T.V.

FROM \$589.00

IMMEDIATE  
FINANCING

BUY NOW BEFORE CREDIT RESTRICTIONS BECOME EFFECTIVE

ONLY  
\$799.00

PREPAID DELIVERY

WITH TRADE

# STOP That Car Thief

OTTAWA (CFP) -- We've all heard of a serviceman coming in late for work because his car was stolen overnight or even in broad daylight.

Montreal, Toronto and Vancouver aren't the only places a steal is likely to occur. As I go about the bases and stations I hear of these car thefts too.

Changing Times, The Kiplinger Magazine, offers this sensible advice:

- "Take the key with you when you park, even if you leave the car unattended for only a few minutes.
- Roll up the windows and lock the doors if the car is to be unoccupied. Follow this same procedure even when you park in your own driveway or unlocked garage.
- Remove car keys from coat pockets when checking your coat or hanging it in a public place.
- Remove all keys but the one for the ignition when a parking attendant takes your car.
- Put packages, briefcases, cameras, clothing and any other tempting items out of sight - don't leave them in full view on the car seat.
- Keep doors locked when driving; desperate thieves won't stop at attacking a driver when he stops at an intersection or light.
- Be extra careful when parked near theaters, movie houses, bowling alleys, night schools, etc. Thieves can easily figure out how long you'll be gone, making it even simpler to drive away in a car that was left unsecured.

Do people heed advice such as this? A lot of them don't: the latest figures show three out of four stolen automobiles had been left unlocked, and in over 40% of them trusting owners had gone off leaving the key in the ignition." (Contributed to CFP by D.C. Hodgert, financial administrator for the forces.)

## New Library Hours

Because of the loss of two people from the Base Library staff it has become necessary to close the library weekday mornings effective immediately. The revised library hours are as follows:

Mon - Thurs 1300-1700 hours and  
1900-2100 hours  
Sunday 1400-1600 hours

**BIG PLANS?** No matter what you're borrowing for, ask your local manager for a Commerce Bankplan loan.

**LITTLE PLANS?**

**bankplan**

A.W. Smalley

Manager



CANADIAN IMPERIAL  
BANK OF COMMERCE

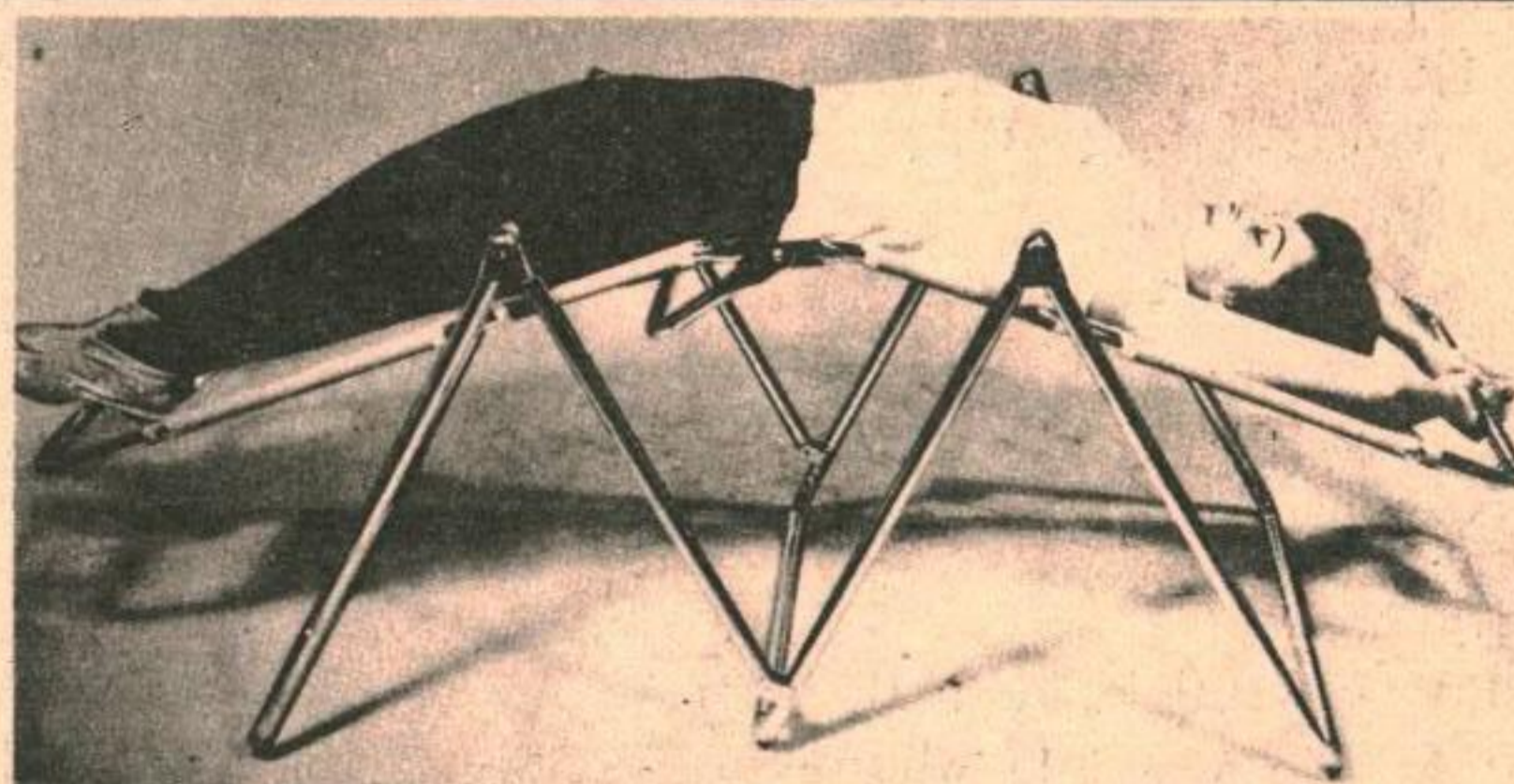
Gimli, Manitoba

Branch



## Posted In? Posted Out?

Want to keep in touch with where you've been? Want to get in touch with where you're going? Want to just be in touch? Pictured above are the 30 or so base newspapers we receive from other members of the Canadian Forces Press network as well as a few official publications, which cross the desk. These are all kept on hand in our offices and we would be happy to have you drop in and browse through them. If you wish to subscribe to some of these papers, we will help you get in touch with their Editorial and distribution staff. So drop in, the coffee's always ready to go! Also available is the Press Roundup, a summary of military articles from all Canadian daily newspapers. Might be interesting to look for hometown news! See you here!



## ••• INTRODUCING ••• LAZY GYM of Manitoba

"THE NEW WAY TO EASY - EFFECTIVE - EXERCISE"

LAZE AWAY THE INCHES & ENJOY YOUR  
FAVOURITE T.V. SHOW AT THE SAME TIME.

1. Lose inches.
2. Normalize the body.
3. Strengthen the body.
4. Increase blood circulation.
5. Improve breathing.
6. Feel ALIVE.

For a Lazy Gym - no obligation - "fun" demonstration in the privacy of your own home, call (from Mon to Fri):

Mr. W.D. Sweatman  
642-8288, Gimli, Man.

# Chapel News

## PROTESTANT CHAPEL

Rev. D.W. Hilton  
Phone: 156r2

SUNDAY - 26 April 1970

- 10:00 A.M. - DIVINE WORSHIP
- 10:00 A.M. - Sunday School at  
Goulding School
- 6:30 P.M. - The Gap Club meets.

MONDAY - 27 April 1970

- 8:00 P.M. - Gimli Ecumenical  
Committee

THURSDAY - 30 April 1970

- 6:30 P.M. - Jr. Choir Practice
- 7:30 P.M. - Sr. Choir Practice

On Saturday, MAY 2nd, the Protestant Ladies Guild will be holding their Annual Rummage Sale. If you have any rummage for the sale, please bring it to the Protestant Chapel, at anytime.

## R.C. CHAPEL

OUR LADY OF LORETTO CHAPEL  
CFB GIMLI, ASPEN PARK, MAN

Major (Rev.) J. Georges Savoie  
B.A.; LPh.; BTh.  
Phone: 156

### MASSES

- Sunday - 9:00 A.M. &  
11:00 A.M.
- Weekdays 5:00 P.M.

### CONFESSIONS

Saturday - 4:00 P.M.-5:00 P.M.  
Before each Mass and whenever  
you feel like it. We will try  
to accommodate everyone.

### BAPTISMS

By appointment: Usually on  
Sundays.

### MARRIAGES

1. Give two months notice to  
your Chaplain.
2. For a Mixed Marriage - four  
months notice would be pre-  
ferable since the Non-  
Catholic party needs to  
take a few instructions  
about the Catholic Faith.

### C.W.L.

Meeting every third Tuesday of  
the month, at 8:00 P.M.

### ALTAR SERVERS

Meeting every second Wednesday  
of the month, at 4:15 P.M.

# Do You Remember?

My wife, do you remember? We had nothing to begin with; everything was yet to be done. And we put our shoulders to the wheel, but it is difficult. You need courage, perseverance.

You need love, and love is not what you think it is when you are beginning.

It's not only the kisses you exchange, the little words whispered in the ear, or holding each other tightly. The time of life is long; the wedding day is but, one day -- it's afterwards, you remember, it's only afterwards that life began.

You do things, and they are undone; you do them again, and again they are undone. The children come; they must be fed, clothed, raised, it never ends; sometimes, too, they are sick, you would be up the entire night, and I would work from morning till night.

There are times when you despair; and the years follow one another and you don't move ahead, and it often seems that you are going backwards.

Do you remember, my own?

All those cares, all those vexations; but -- you were there. We remained faithful to one another. And so I was able to lean on you, and you, as well, used to lean on me.

We had the good luck to be together, and we both tackled the job before us, and we came through, we took all the blows.

True love is not what people think. True love is not a thing of a day, but of always.

It's helping each other, understanding each other.

# Tips For Engaged Couples

1. Despite what people say, believe firmly in love, its lastingness, its grandeur. Trust in the other person's fidelity.
2. Make an effort to render your love more personal, more thoughtful.
3. Struggle and make sacrifices so that, in your signs of affection, you remain chaste and respectful of the other person. Be able to deny yourself and still love each other just the same.
4. Begin right away to improve yourself, to correct your biggest fault, to develop your good qualities more, and with these goals in mind accept the other person's help.
5. Be willing to help the other person correct his faults; with kindness and understanding, point certain things out to him. Be able to require certain things of the other person and, out of love, be willing, if necessary, even to hurt his feelings.
6. Admire the other person despite his faults.
7. Start honest, open dialogue with the person you want to marry. Tell him candidly what you do not like in him. Confide in each other.

RAFFLE

## Coffee Party and Bake Sale

RAFFLE

Time:  
May 1st  
0900-1200

COME AS YOU ARE

Place:  
Social Centre

- FREE -

Cookies and Kool-Aid for the Children  
Baby Sitting Service

Sponsored by the C.W.L. - Catholic Women's League

# Yellowknife New Northern HQ

Defence Minister Leo Cadieux announced last Friday that the Canadian Forces will establish a permanent headquarters at Yellowknife, NWT, this year to coordinate increasing military activities in Canada's northern regions.

The headquarters will be organized during the spring and summer in Ottawa and move to Yellowknife in the fall. The decision to establish a headquarters in the north was announced last Sept. 19 in the statement outlining the restructuring of the Canadian Forces.

Activities of the Department of National Defence in the north are being carried out in cooperation with the Hon. Jean Chretien, Minister of Indian Affairs and Northern Development. The selection of the Yellowknife as the headquarters was made in conjunction with the Department of Indian Affairs and the government of the Northwest Territories.

Establishment of the headquarters is one of several steps being taken to strengthen Canada's military presence north of the 60th parallel, including the setting up of a small aircraft servicing detachment at Frobisher, increased air surveillance coverage and year-round land and tactical air operational exercises.

The headquarters, officially designated Headquarters Northern Region, will be commanded by Colonel Ramsey Withers, 39, Ottawa, who will be promoted to Brigadier-general on taking up his appointment later this spring. He will be responsible for co-ordinating military activities in the north including liaison with the Territorial Government. The headquarters staff will reach a strength of approximately 35 personnel by late 1971. Married personnel on the

staff will be accompanied to Yellowknife by their families.

Small regional military liaison detachments were formed in February at Yellowknife and at Whitehorse in the Yukon to carry out liaison with territorial authorities and civilian agencies in these areas. The Yellowknife detachment will be absorbed by Headquarters, Northern Region when the latter is established in the fall.

A small detachment of air personnel from Maritime Command will be located beginning next month at Frobisher Bay airport. Facilities provided by the detachment will permit Argus aircraft to operate from the airfield, extending the surveillance coverage of the Canadian Arctic Archipelago. Air hours on surveillance flights are being increased by 25 percent over last year.

Arrangements will also be made to operate Tracker aircraft on coastal patrol from Goose Bay, Labrador and Fort Chimo near Ungava Bay. These aircraft, which will continue to be based at Shearwater, N.S., have been deployed successfully to northern Canada on previous occasions.

Earlier this month the Canadian Forces began a series of ground exercises in the Arctic which will continue on a year-round basis. The exercises are designed to familiarize troops with winter and summer operations in northern areas. Next month The Canadian Airborne Regiment, based at Edmonton, will carry out a full scale exercise in the Coral Harbour area.

Approximately 400 Canadian servicemen are now serving in the north, most at the communications research stations at Alert and Inuvik. Others serve at DEW Line Establishments.

## "A HUNDRED YEARS AMONG THE WESTERN ICELANDERS"

Motion picture of a century of Icelandic colonization in Utah and Manitoba, shown by Dr. Finnbogi Gudmundsson, Librarian of the National Library of Iceland. Commentary in English.

Gimli District Band will play during intermission and the Gimli Centennial Choir will sing.

Shown at Gimli in the George Johnson Gymnasium, Fri., April 24, at 8:00 P.M.

General public invited.

Collection.

# I.O.S.

CANADA

## Fortunes flow Through your Hands

If Your Average Monthly  
Income is \$600.00. Your Total  
Earnings in 30 Years Will Be

# \$216,000.00

**PART OF IT IS YOURS TO KEEP**

**How much have you kept so far?**

Your I.O.S. Representative is:



**C. E. (Chuck) Keating — Maj. Retired**

He will be available in the Base Library on the second and fourth Friday of each month, from 1:00 p.m. to 5:00 p.m. to discuss your financial planning.

## INVESTORS OVERSEAS SERVICES

383 York Ave., Winnipeg, Manitoba  
Bus. Phone: 942-3177—Res. Phone: 284-1102



## Viking Motor Hotel LTD.

PHONE 642-5181

P.O. BOX 131

- 21 Units -
- Air Conditioned -
- Cocktail Lounge -
- Sauna Baths -
- Dining Room -
- Banquet Facilities -
- Beverage Room -

THIS WEEK

THE FOUR SHARPS - Wed - Sat - Sat aft.

NEXT WEEK

WHISKY JACKS. Tues - Sat - Sat aft.

Cor. Hwy.  
No. 9 and  
Centre St.

Phone for  
reservations

GIMLI  
Manitoba  
Canada

# The MART

## THE FRAMFARI X-WORD

### HOUSES FOR SALE

3 large bedrooms, utility room, new gas furnace, house size 1,072 sq. ft., 2 storey shed 16' x 22'. For further information phone 642-5102. Open to offers.

### AUTOMOBILES

1966 Volkswagon Station Wagon 1600 series. Very good shape. Contact Ray Bruneau at local 143 or 7268.

1962 Ford Station Wagon. Good condition. Call B. Elliott at 642-5151 Local 61 or Wpg Beach 389-5560.

1969 Ford LTD, 2 door hard top, PS, PB, PW, P.ANT, Brough Int, vinyl roof, radio, rear window defrost. \$3,000.00. Phone 233-6719 (Wpg).

### MISCELLANEOUS

For Sale: 1 Genron baby carriage - makes into a car bed and a stroller Excellent condition.  
1 Jolly Jumper with clamp or screw.  
1 convertible high chair - can be set up as a high chair, low chair, pottie chair or play table and chair. Very good condition.  
1 very smart looking black evening maternity dress, size 12, worn twice. For information - call 642-5336.

Large baby crib and baby carriage in good condition. For information call 642-5531

Wooden baby high chair, folds into play chair - \$6.00  
21" Fleetwood TV large cabinet with sliding doors - good working condition \$50.00.  
Chrome kitchen table with four chairs. Chairs need recovering - \$30.00. Phone 642-7452.

WANTED - Playpen in good condition. Phone: 642-5456.

NOTICE: VANDA-BEAUTY COUNSELOR Distributor, Mrs. Lilian Simpkins, will interview anyone interested in becoming a Counselor at the Viking Motel, room 6, on Monday, 27th April, from 9:30 a.m. to 4:30 p.m. Products and counselling available to all. Orders taken by phone or in person. Will also call on persons unable to come to motel.

G N I M M I W S E S I O N O W  
A D D S C I T S A L P U G L Y  
E E E F C I D B N A C I T G S  
N T T A S D R E O L S E O S D  
O A R C T E O S E E C L E E O  
Y N N E A H T A T H O N R D O  
N I A T K D R A N N Y E U I F  
A M H E U A M O H R C G T C I  
C A E M C A L C U P R Y A I S  
Y T P N L O E C A E S X N T H  
E N T C G T R I V E R O R S P  
R O Y Y O E G O M S W E H E A  
R C H E M I C A L S A A L P O  
O U P R O B L E M M T I S I S  
T S T F A R C R I A E R A T O  
L W O R R A E G A B R A G L E

Listed below are the words that you will find hidden in the puzzle above. These words are spelled out in all directions - so look very carefully. By assembling the letter that remain, in order, you will find today's hidden words which will be published next week. This week's hidden words have

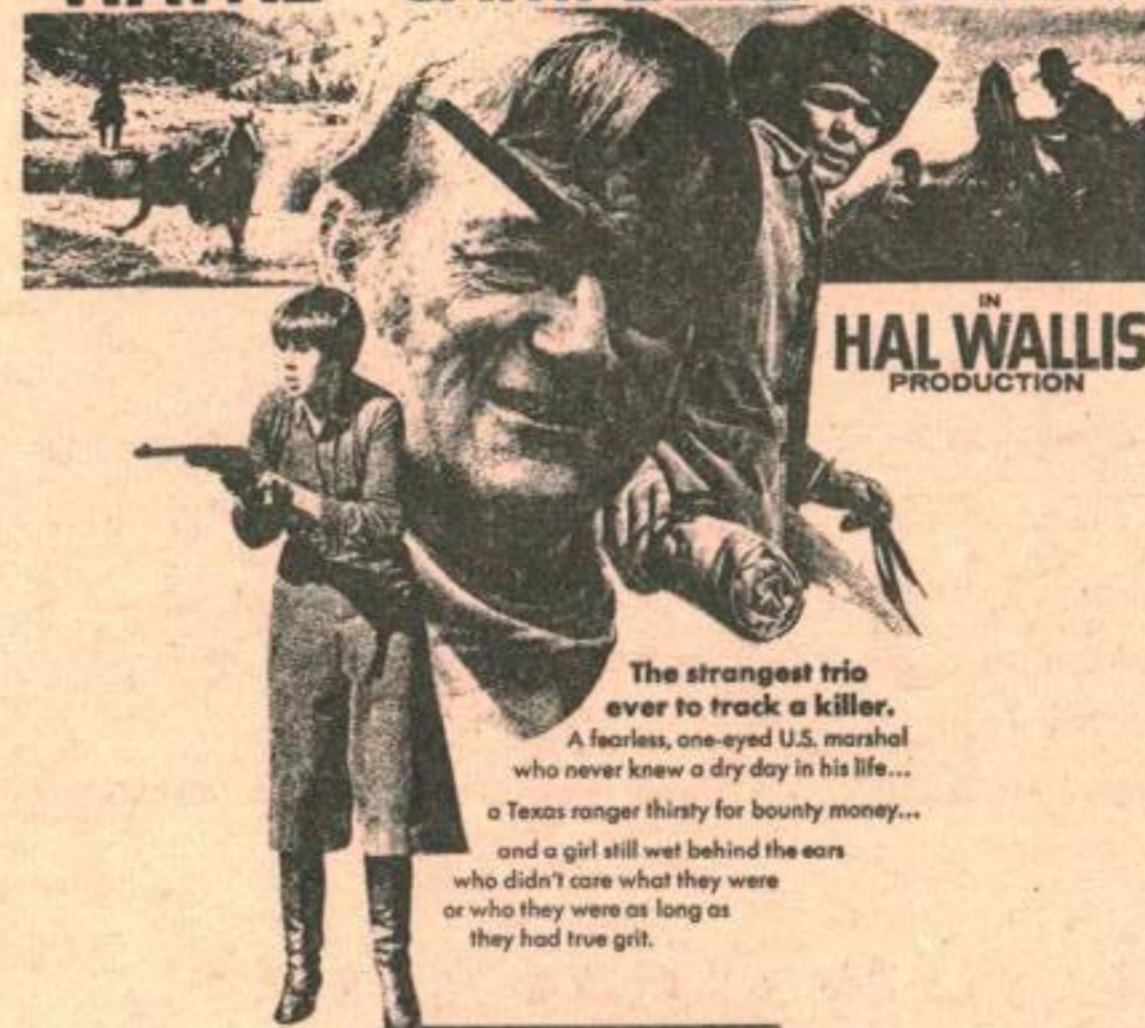
23 letters.

LAST WEEKS ANSWER:  
ANTI SUBMARINE WARFARE  
POLLUTION

AIR	NUCLEAR
AIRCRAFT	OCEAN
ARROW	OIL
BREATH	OXYGEN
CAR	PESTICIDES
CHEMICALS	PHOSPHATES
CONTAMINATED	PLASTICS
CYCLAMATES	PROBLEM
DDT	RIVER
DEATH	SEA
DUMP	SOAP (2)
FISH	SMOG
FOODS	STREAM
GARBAGE	SWIMMING
LAKE	TECHNOLOGY (2)
MERCURY	TORREY CANYON
NATURE	UGLY
NOISE	WASTE
NOW	WATER

## STARLITE THEATRE

PARAMOUNT PICTURES Presents **JOHN WAYNE · GLEN CAMPBELL · KIM DARBY**



**TRUE GRIT**

SUN - MON APR 26-27  
ADULT (\$1.00) 8 PM 135 MINS



REMY SLATE · ADAM ROARKE · JOCELYN LANE  
JAMES GORDON WHITE · R.G. McMULLEN · MAURY DEXTER  
MAURY DEXTER · AMERICAN INTERNATIONAL

THURS APR 30  
ADULT 8 P.M. 100 MINS

## Gentle Ben

Dennis Weaver

Vera Miles

SAT MATINEE MAY 1  
GENERAL 1:30 P.M. 100 MINS

## April Fools

Jack Lemmon

Kathleen Deneuve

FRI MAY 3  
GENERAL 8 P.M. 110 MINS