



# Framfari



Volume 1 Number 2

C.F.B. GIMLI, MANITOBA

Friday February 13, 1970

## "GIMLE"

The Blessed Hall ??

(An article written by John K. Laxdal on the occasion of the 75th Anniversary of Gimli).

Norse mythology predicted Ragnarok, the Twilight of Doom of Gods -- an irresistible fate destroying the gods of the world, with a lapsing of all created things into chaos. Afterward there would arise a new heaven and a new earth, on which good men would dwell in an eternity of Plenty and Peace. A supreme God, above all the Aesir (heathen gods) would reveal himself and rule for all eternity, and the blessed would dwell in Gimle (Gimli), in a hall fairer than the sun, the highest abode of light.

This is disputed. Some consider that it means the great hall of heaven, whither the righteous will go to spend all eternity.

Others take it as originating from two words: Gim - fire and hle - lee, and meaning a shelter from fire; they also take it to mean the place where the hall of heaven was located - i.e. The new world itself, not the hall.



With the graduation of course 6807, we can now look forward to spring just around the corner. This T-33 fourplane formation, led by Capt. "Chalky" Leblanc, was photographed by Cpl. "Red" Bryson.

cont'd page 3.

# Editorial

Plans for Winter Carnival are moving right along. Several sections have selected their Queen candidate and the crowning of the winner will be the big kick-off on opening night. Coordinators are getting their teams organized and practiced for all the big events; this year promises more events than ever before. The publicity program is in full swing and it's probably a safe bet that everyone who's been awake for any small period in the past few weeks is aware that something is definitely afoot.

How about YOU? Have you submitted your name for all the events you wanted to try this year. Give the organizers a break. Don't leave it all to the last possible moment; if you do you may just find that all the spots have been filled and you'll spend yet another Carnival as an "interested onlooker"

## SOUND OFF

Dear Sir,

BRAVO!!!

Oui, bravo à toute l'équipe du journal, pour le premier numéro de Framfari.

Quelle amélioration!

La publication d'un journal n'est pas chose facile et je sais que cette parution a demandé un travail énorme de la part des responsables de Framfari.

### UNISKINS by mac



Felicitations à vous tous  
qui travaillez à ce journal.

L.K.

Dear Sir,

We wish to congratulate those responsible for the latest issue of your paper. Not only have you published a unique edition, but your happy choice of the name "Framfari" does great honor to the memory of our hardy pioneers. Our parents and grandparents, respectively, were among the first group which arrived at Gimli in 1875, having previously spent a year in Kinmount, Ontario.

We would greatly appreciate your mailing a copy of this fine edition to our sister and brother-in-law, Mr. and Mrs. A.F. Wilson, at 802-188 Roslyn Rd. Winnipeg. Mr. Wilson was at one time Education Officer at the Gimli Base, and was involved with the paper which was published at that time. I am sure he would enjoy this issue. Since his retirement he has been teaching at one of Winnipeg's High Schools.

Very sincerely yours,

Mr. & Mrs. N.K. Stevens

Dear Sir,

There was this character who came to the office on Monday and he was madder than blazes. Some no good so-and-so had entered his parked car and had taken out his tape deck and about a hundred bucks worth of tapes. Mad? Sure he was mad and had good reason to be and it was all directed against the thief until I asked a question.

"Do you always lock your car when you park it, especially overnight?" You should have seen the queer look that came over his face when he gave me a very quiet "NO".

Now I can see some character breaking into a car or any other place for something that he wants and I agree that a lock will only keep an honest man out. But--why invite trouble and give an excuse to some of these roving youngsters looking for excitement and finding it in your unlocked car. There are people in the area who will buy anything and never ask where it came from so, if you are willing to contribute to these people, just leave your car unlocked when you park it in Aspen Park or the Evergreen Development or on the streets in Gimli. After all it is your car and your insurance premium.

Oh, just one other thing, don't look for too much sympathy from this friendly office or from any other police department for any act of stupidity on your part.

Your Friendly Marshall

FRAMFARI is published weekly for distribution on Friday. Opinions expressed are those of the writers and do not necessarily reflect Official Canadian Forces policy. The Editor reserves the right to edit all copy and advertising to suit paper policy. All correspondence should be addressed to:

Editor, Framfari  
CFB Gimli, Manitoba

Phone: 642-5151--L126R2

Deadline for all copy: 2 p.m. Tuesday

#### PUBLISHER

....Col. J.F. Dunlop  
Base Commander

#### BUS. & PROD. MGR.

....Maj. A.C. Platz-L57

#### EDITOR

....D.B. Hartley-L126R2

#### ASS'T EDITOR

....G.D. Kenny-L154

#### SPORTS EDITOR

....D. Gagnon-L116

#### WOMEN'S EDITOR

....Mrs. Betty Bennett-7964

#### AD. MANAGER

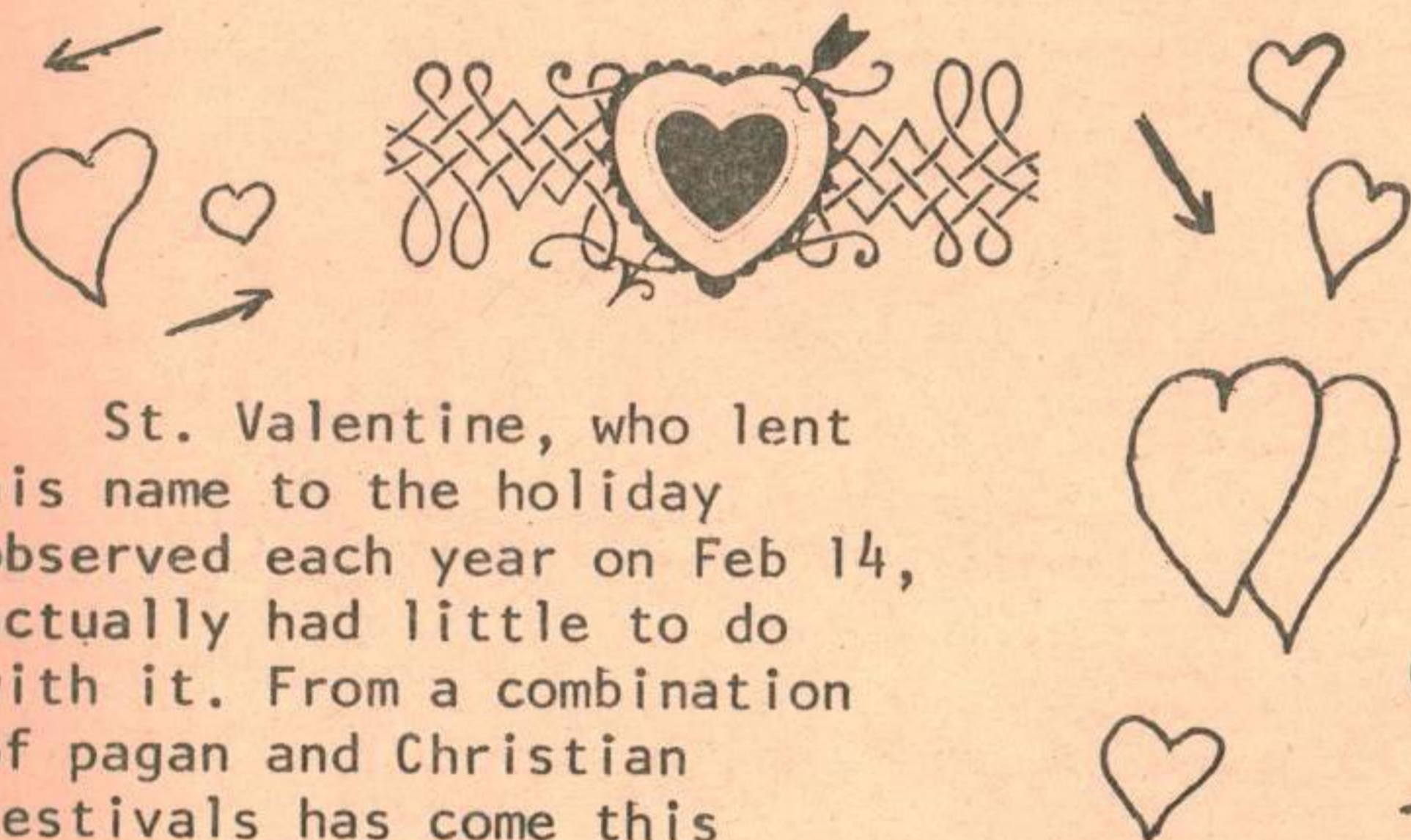
....P.D. Sharkey-L154

#### ASS'T AD. MGR.

....J.F. Bennett-L154

In any sense, it apparently means a heavenly abode, the home of the blessed, and a place of peace.

It is said that when the colonists of New Iceland had to send out written records concerning their settlement, to the government, John Taylor, the deputy of the Canadian Government in the colony, and the good angel of the settlers, came to two prominent men among them saying that he could not send letters, from a nameless location, and requesting them to give the site of the town a name. The two Fridjon Fridriksson, a merchant, and Jakot Jonsson, went to confer with Olaf Olafsson of Espiholi (now site of Arnasson's Dairy), concerning the name. Call the town Gimli, he said, and they all agreed to that. (Apparently the name reflected the longing of the colonists for a refuge which might be to them a haven of Peace and Plenty.)



St. Valentine, who lent his name to the holiday observed each year on Feb 14, actually had little to do with it. From a combination of pagan and Christian festivals has come this custom dedicated to love. In the late 1700's, sweethearts began penning and decorating cards, some so elegant and beautiful they are virtually museum pieces today. And since neither mail service nor envelopes existed, these tokens of love were usually delivered in person. The more well-to-do sent their cards by coach, though they double wrapped and sealed them with wax, so only their beloved could read them.

*Valentines are nice to share. Valentines are Lucky. They are happy and pretty. We have fun at school, we give out Valentines. Hearts are big and red or blue. Some Valentines have a man made of hearts. Some are little or big. Valentines day is on February 14th. It started a long time ago and is a day to give Valentines to sweethearts.*

by Vernon Gerwin  
Grade 2F

**The greatest  
Credit Union  
member  
convenience!**




- \*Instant money in your pocket with complete security against loss.
- \*Positive Identification Card with your picture in full color - no one can forge your picture.
- \*CU-CHEKS guaranteed by your Credit Union - good anywhere in Canada.
- \*Convenience of up to \$1,000 revolving line-of-credit - or no-cost current account operation, as you wish.

GET COMPLETE DETAILS NOW!

CAMPING TRAILER TO RENT  
- Book Early -  
MACLEOD'S STORE  
642-5489

**TARGET  
STORE**  
Complete Family  
Clothing  
642-5246  
Tues. to Thurs. 9am-6pm  
Friday 9am-7pm  
Saturday 9am-6pm

— GIMLI CAFE —  
Chinese Specialties  
Orders to take out.  
Centre Street. 642-9278



**DOCKSIDE FISH PRODUCTS**

SPECIALIZING IN

- FRESH AND SMOKED FISH
- RETAIL FISH SALES

CENTRE ST., EAST      PHONE 642-5108

# Chapel News

## THE PROTESTANT CHAPEL

Rev. D.W. Hilton  
Phone: 156r2

Sunday Service - 1000 hours  
DIVINE WORSHIP

Chapel Guild - Meets the  
THIRD Wednesday of each  
month at 8:15 P.M.

Choirs - Thursday -  
Junior 6:30 P.M.  
Senior 7:30 P.M.

Confirmation Class - Meets  
on Saturday, 12:30 P.M., at  
PMQ 156.

## OUR LADY OF LORETTO CHAPEL CFB GIMLI, ASPEN PARK, MAN.

Maj (Rev) J. Georges Savoie  
B.A.; LPh.; BTh. Phone 156  
Masses: Sunday - 0900 hours  
1115 hours

Weekdays - 1700 hours

Confessions: Saturday -  
1600 to 1700 hours. Before  
each Mass and whenever you  
feel like it. We will try  
to accommodate everyone.

C.W.L.: Meeting every third  
Tuesday of the month, at  
8:00 P.M.

Altar Servers: Meeting every  
second Wednesday of the month  
at 4:15 P.M.

Valentines day is fun be-  
cause you have parties and you  
get valentine hearts. At school  
you make valentine pockets and  
you put cards in them. At Val-  
entines you make hearts, cards,  
and stories. At school on Fri-  
day we are having a party. We  
sing songs and play games. I  
give out valentine cards. My  
mother is making some cake. We  
get chocolate marshmallow hearts.  
My mother is making some cookies.  
We put our pockets on our black-  
board. Valentines Day is fun.  
We bring home our valentines  
cards. I love Valentines Day.

by Karen McPhee  
Grade 2F

# Friendship

*I know your answer, Lord.*

*By design, You make us weak,  
dependent,  
incomplete.*

*By design, You put a gnawing in our hearts,  
a tightness in our throats.*

*By design, You want us --  
You compel us --  
to search beyond ourselves for strength,  
for freedom,  
for fulfillment.*

*It is no accident, Lord, that in the search  
we discover each other,  
and we find traces of You.*

*By communicating good, we give our friends,  
a glimpse of Your goodness.*

*By loving,  
we exemplify a little of your love.*

*But Lord,  
I have broken out of my prison,  
but I am still not free.*

*I have been comforted in weakness,  
yet I have too little strength.*

*I have experienced the warmth and the depth of human  
friendship,  
but I am not fulfilled.*

*I seek, I give, I possess, and yet I yearn.*

*It is You, I seek, O Lord, unlosable Friend.  
Fill me up, Lord.  
Complete me.*

*I will be restless until I rest in You"*

*"He removes the greatest ornament of friendship, who takes  
away from it respect.*

*There is no greater bane to friendship than adulation,  
fawning, and flattery".*

♥  
Tell  
someone  
you  
love her  
♥

## GIMLI MOTOR PRODUCTS

1-1970 27 H.P. Arctic Cat

1-1970 24 H.P. Arctic Cat

Call Lou- 642-5133

## CLEARANCE

# Yours, Fredd

Dear Sir,

I was thumbing through this magazine awhile ago and I came across an ad praising the versatility of "Money Kards". It seems this guy was dropped into the middle of the Yukon in grubby clothes, miles from anywhere, with only his Money Kard. So, he walked, 5 miles to a nearby town, where he rented a car and drove to Whitehorse. Then he flew to Vancouver via CPA, stayed at a posh hotel overnite, bought some new clothes the next day, and finally, took a beautiful girl out to a swank restaurant for dinner--all with this Money Kard. So naturally, I just had to try it.

With my M-K in the pocket of my dungarees, I got Search and Rescue to drop me off 5 miles from Indian Lake in northern Manitoba. After walking 10 miles, I realized I was going the wrong way, so 15 miles back I arrived in Indian Lake. I strode up to the nearest car-rental agency and flashed the M-K at them. Instantly, I was placed in their best car, no questions asked, and I headed for Thompson. Running low on gas, I stopped at a small service station and asked the alert young attendant (as alert as a corpse!) to "fill-er-up". You think he'd ever heard of a M-K? You guessed it.. I had to swap the spare tire for the gas.

On to Thompson, where I missed the early flight to Dauphin and Winnipeg. I was hungry, so I dropped into a small coffee shop. Guess what...you can't pay for an egg-salad on rye with a M-K at "Big Sal's Beanery" in Thompson. So I passed the hours 'til the next plane washing dishes. My M-K got me on the aging aircraft, and after an uneventful 14 hour flight to Winnipeg, I deplaned, and grabbed a taxi to the Fort Garry, where I learned: 1) you can't pay a cabby with a M-K, 2) you can't tip a cabby with a Money Kard and 3) cabbies can be very nasty.

After a bit of a row I was convinced that my new watch was just worth the ride and the tip. However, the doorman at the hotel, upset by the disturbance outside and my grubby appearance, decided to evict me before I even got settled. I walked 18 blocks to another hotel where my M-K was again as "good as gold". But the man at the desk was upset when I asked him where I could find a beautiful girl to treat to dinner with my Kard.

I asked him to call the MP's, which he did gladly: I socked one of them when he arrived, got arrested and spent two restful, well-fed days in the Westwin Guard House...without even using my Money Kard.

And that, sir, is why I wasn't in to work last week. I wonder if you would mind explaining to my boss?

Yours, Fredd

## GIMLI MOVING & STORAGE LTD.

Fast Freight and Express to Winnipeg Beach, Gimli

\*Packing\*FURNITURE\*Shipping\*

GOODS INSURED Anywhere in Canada RELIABLE SERVICE

Gimli Phone 642-5269

Winnipeg Phone 774-2259

## TAYLOR PHARMACY

### Free Delivery

Our BIG February festival of values is now underway. Check your flyer delivered earlier this week for many

#### SPECIALS

KLEENEX 400 size 3 for 95¢	MODESS 48s \$1.59
NEW DAWN HAIR COLOURING Spec. \$1.49	KOTEX 48s \$1.49

#### A.R.P. VALUE CENTER

Centre & Sixth, Gimli  
Business phone 642-7470  
After hours 642-5810

Pat & Norm Taylor  
Pharmacists.

Store hours -  
Sun & Mon 12 to 6  
Tues to Thurs & Sat 9 to 7  
Fridays from 9 to 9

#### PENTHOUSE

HAIR BOUTIQUE

Be sure  
to stop in  
and visit us.

Located in the commercial  
Building across from TOMBOY

Tues-Fri 9am-9pm  
Saturday 9am-5pm  
Telephone 642-5141

# Consumers News And Views

Sales of winter merchandise are now in full swing, so this is a good time to consider the purchase of a new snowsuit for the young ones in your family.

With a growing family, a snowsuit should be considered an investment--the child should out-grow it, not out-wear it. If you buy wisely and provide the proper care, you'll find that a snowsuit can be passed from one child to another.

The factors for long wear are quality, material and construction of the garment. The outer covering should be waterproof for effective wear. If you decide on a pile fabric, be guided by the density and depth of the pile. You can judge by the bulk. The thicker the garment -- be it pile, quilted or lined -- the more air will be trapped and this is what provides warmth.

Cuffs must fit snugly to ensure that warm air stays in and snow stays out. Examine the cuff. Pull it open and make sure it snaps back. Double-stitched seams and double thickness at the knees are needed for the rough usage youngsters will give a snowsuit. Check other points of construction too. Are the buttonholes well made? And what about the zipper? It's got to be easy running and of the heavy, industrial type.

In the basic styles, the one-piece suit often starts out as a bunting (baby bag) and with some fancy zipping can convert to a regular snowsuit. This style, though available for older children, is more often shown for the very young.

The two-piece suit should have a generous overlap between the top and bottom sections -- both for warmth and growth allowance.

Be sure the footstraps are sewn high on the inside of the leg as this permits flexibility in adjusting the length of the pants in either the one or two-piece suits.

Make sure the outer shell is turned under at the leg and arm cuffs and that the lining and shell are not simply sewn edge-to-edge. If the lining is not "recessed" it may sag -- particularly when it gets wet.

All the best suits have tags or labels. Good manufacturers are proud of their products and want you to give them the best care. In order to get full value for the dollars spent on this important item in your children's wardrobe--always read the manufacturer's instructions. Don't guess at the proper care method. If you are fortunate enough to have the instructions on a sewn-in label, you should have no problem but if the instructions are on hang-tags, be sure to note any special instructions and save them for future reference.

If the hang-tags are missing or if you have any doubts as to how to handle

the garment--Consumers' Association of Canada suggest that you ask the sales clerk if the snowsuit is washable or has to be drycleaned and have this information written on the bill of sale for your future protection.

Consumers' Association of Canada has a new, free brochure now available which describes the work of the nation-wide organization. For a free copy write: "Brochure", Consumers' Association of Canada, 100 Gloucester St., Ottawa 4.

**DEADLINE 2 PM. ON TUESDAY.**

J. Chudd & Sons  
Garage, Plymouth, Dodge,  
Chrysler, Valiant Cars.  
Dodge Trucks, Shell Oil  
Products. 642-5329

## CRONSHAW'S JEWELRY

ENGRAVING

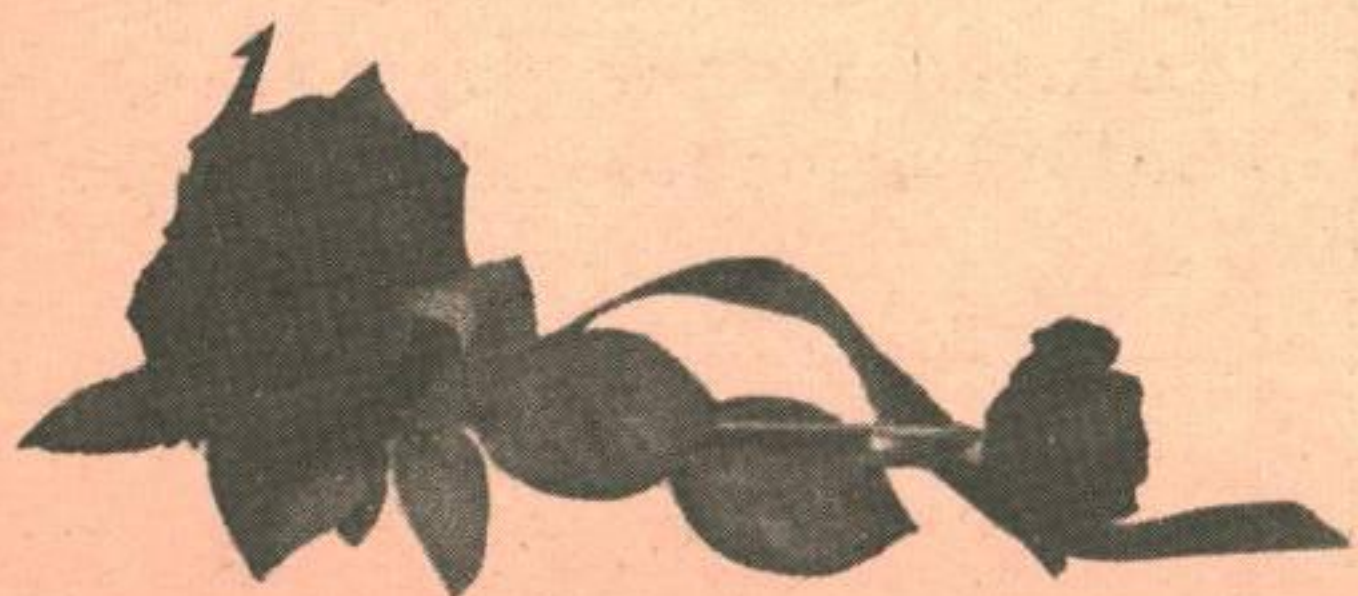
WATCH REPAIRS

JEWELRY REPAIRS

642-5039



THE  
*falcon lounge*  
OF FIRST AVENUE  
GIMLI, MAN.



*Gimli Florist*

FLOWERS FOR ALL OCCASIONS

PHONE 642-5298

78 FIRST STREET

# From The DISTAFF Side

Well, the Framfari's made it into its second week, and this time we have a women's page. This week we are featuring a skin care column, a gardening column and an exercise column. Things to look forward to include hair care, and fashion columns. I've heard the complaint that the women's page lacks humour, but we're going to try and instill a little of that with an occasional amusing column or cartoon.

But we can't read your minds over here, and it's up to you ladies to let us know what you would like to see on your page. If you have an opinion about something of general interest to your average (or even above average) housewife, let us know if it's printable, we'll print it.

We also have to rely on you for announcements and notices of upcoming events. Anything you have to contribute, both tangible and advice, may be mailed to Framfari Press, CFB Aspen Park, Attention: Betty Bennett. or Phone 7964.

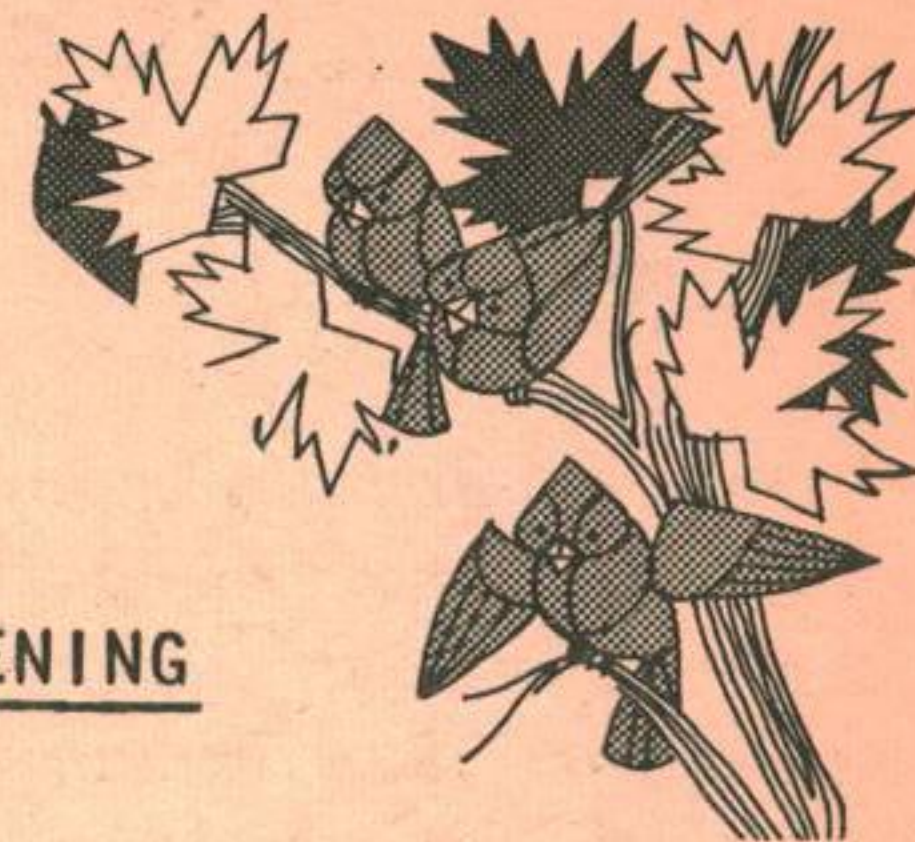
## ANNOUNCEMENTS

**BIRTHS:** To Mr. and Mrs. Bob Scheer, a baby girl, Michelle Lynn, 6 pounds, 10 ounces, Saturday at Teulon.

**BAPTISM:** Victoria Lynn Kalbfleisch, daughter of Lynda and Bill, was baptized February 8 at the Protestant Chapel by Padre Hilton. Victoria was born December 31st, 1969 at Teulon. Godparents are Bob and Pat Zimmer.

All Protestant ladies are invited to spend an evening of fun and fellowship with the Protestant Chapel Guild. Next regular meeting is Feb. 18, 8:15 P.M. in the Chapel Annex.

Do you have any announcements? Have you heard of any births or marriages? Is your club or group holding a special event? The women's page would appreciate your help in getting this information to us.



## GARDENING

by Elizabeth

This is the time of year when the gardener should get his tools out in order and dressed up with a new coat of paint, etc. No doubt they were brought in last fall, at the last minute, in a hurry, all coated with mud and whatever. Now is the time to get them out and have a good look at them--clean them up, paint or varnish the handles and make sure your house number or name is painted clearly on them somewhere, so they do not wander when your friendly neighbors borrow them.

# C A R O L ' S

## BEAUTY SALON

### Dolores Miller

3rd Avenue

Telephone 642-5077

# TIP TOP CLOVER FARM

## Saving money on food??!

CHECK OUR REGULAR PRICES!  
CHECK OUR MEATS FOR BARGAINS!  
PHONE US AT 642-5418.

CHECK OUR WEEKLY SPECIALS!  
STOCK UP FROZEN FOODS AND MEATS  
AT REDUCED PRICES!

# Local Artists Show Their Stuff

## FIRST EXHIBITION OF LOCAL TALENT

One regards something for nothing rather skeptically these days, but last weekend one might have spent a delightful afternoon - free - at the First Exhibition of the Gimli Arts, featuring works by three local arts and crafts groups.

The Exhibition, sponsored by the Centennial Celebrations Committee was an exciting success, with over 600 visitors including many from Winnipeg.

The Gimli Art Club, oldest of the three groups, displayed over 100 paintings and drawings, ranging from traditional landscapes and still life, to abstracts and moderns. The selection also covered a variety of mediums, including

oils, acrylics, water colours, inks and pastels. The Art Club established in April 1969, has about 25 members, who this winter have been meeting under the instruction of Ken Bailey, a Winnipeg artist. One feature of the Art Club Exhibit was a painting raffle. The painting an autumn scene in oils, donated by Shirley Bezanson was won by Dick Arnason of Gimli.

The Pottery Club, established in October 1969, displayed a variety of pieces, including examples of turned pottery, slab and coil methods and sculpting. The Club has 20 members, instructed by Elsie Parkinson of Gimli. High priorities for the group in the future are youth and childrens programmes and a programme for the elderly.

Copper tooling, aluminum etching and floral centrepieces were among the crafts displayed by the Handicrafts Club. This 20 member club has also been meeting since October, under the instruction of Mrs. Adeline Gendur.

Thirty-seven pieces from the Arts Exhibit were chosen by Miss Nadya Kostyskyn and Steve Ripa, for display at the Bay in Winnipeg, Feb. 25-28.

A special mention should be made of all the people who, in some small way, contributed to the success of the Arts Exhibit.

For those unfortunate enough to have missed the show, there will be a second chance during the week-long "Festival of the Arts" this June.

Please support it!!

## MACLEOD'S

FAMILY SHOPPING CENTER

### WEEKEND SPECIAL

Thursday, Friday, & Saturday

#### KOTEX

Reg 53¢ Special 35¢

Come In And Enjoy  
Free Coffee While  
You Browse

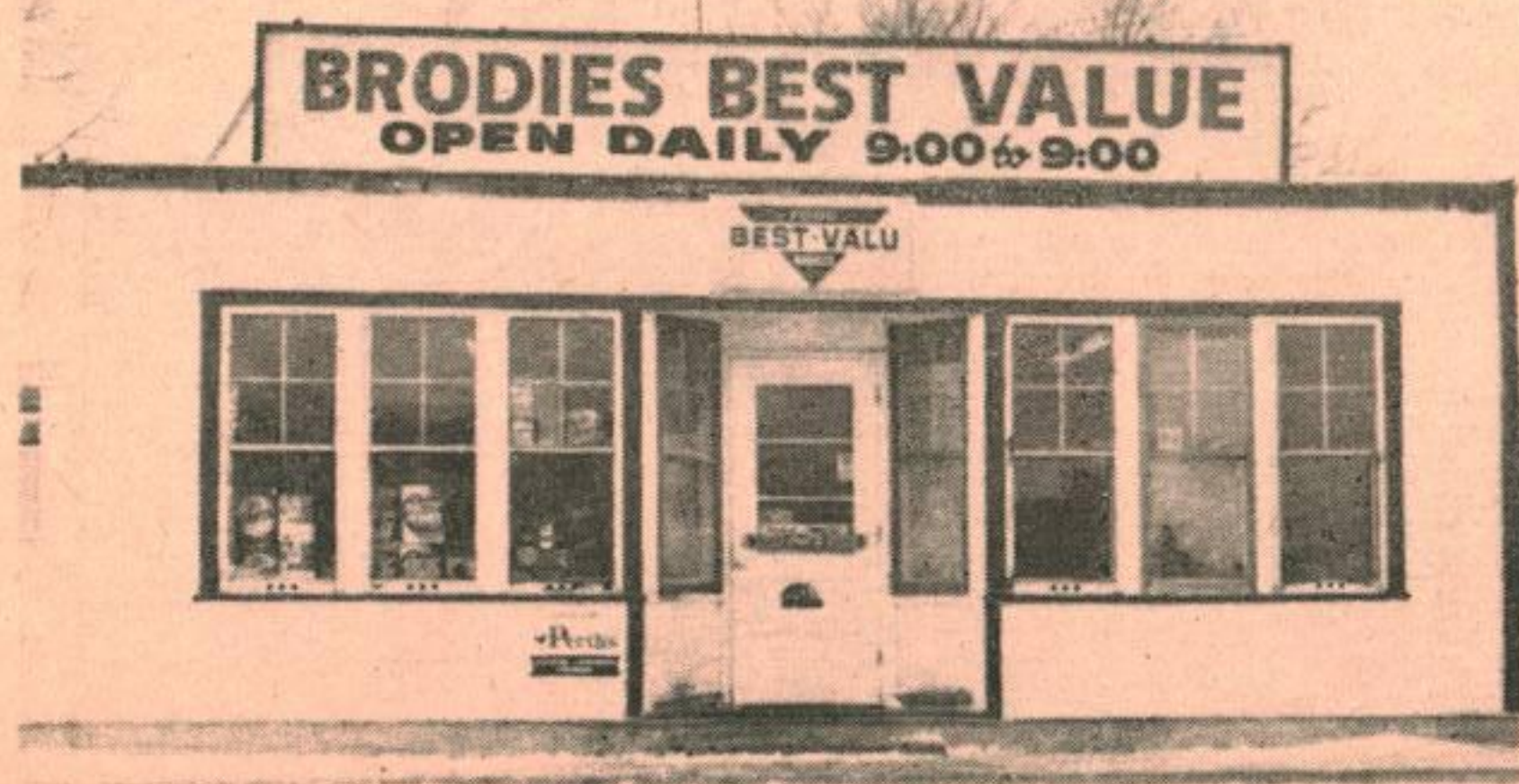
96 3rd Ave. Mng. Ray Hobin Ph 642-5489

## NORSEMAN MOTEL

- Housekeeping units
- Overnight accomodation
- Free T.V.

Corner of centre and sixth

642-5234



## BRODIES BEST VALUE Groceries - Meats Dairy Products

Open Daily 9am to 10 pm

98 3rd Ave. Gimli

642-5913

# Beauty Spot

Large, accentuated eyes are a woman's most attractive feature. Wide-open and candid, or deep and mysterious - any type can be a fantastic asset.

However, even those lucky ones born with lovely eyes can make them more alluring by the clever use of eye makeup.

For the rest of us, it is the greatest boon, for, cleverly applied, it can change an ordinary-looking girl into a beauty.

First cover the whole eyelid with white shadow and then apply your colour. Remember eyeshadow should be a subtle contour. Having the area around the eye light makes the eye appear larger. Next apply your eyeliner. This highlights the natural shape of your eye. A liquid liner, with a little practice, can give a lovely, unbroken outline.

Mascara is available in many different forms, but the automatic brush-ons are by far the most convenient. Apply two coats and don't forget your bottom lashes.

To acquire the "long-lashed" look without false lashes, use a curler, curling them up and away from the eyes. Brush them up and outward at night with a cream.

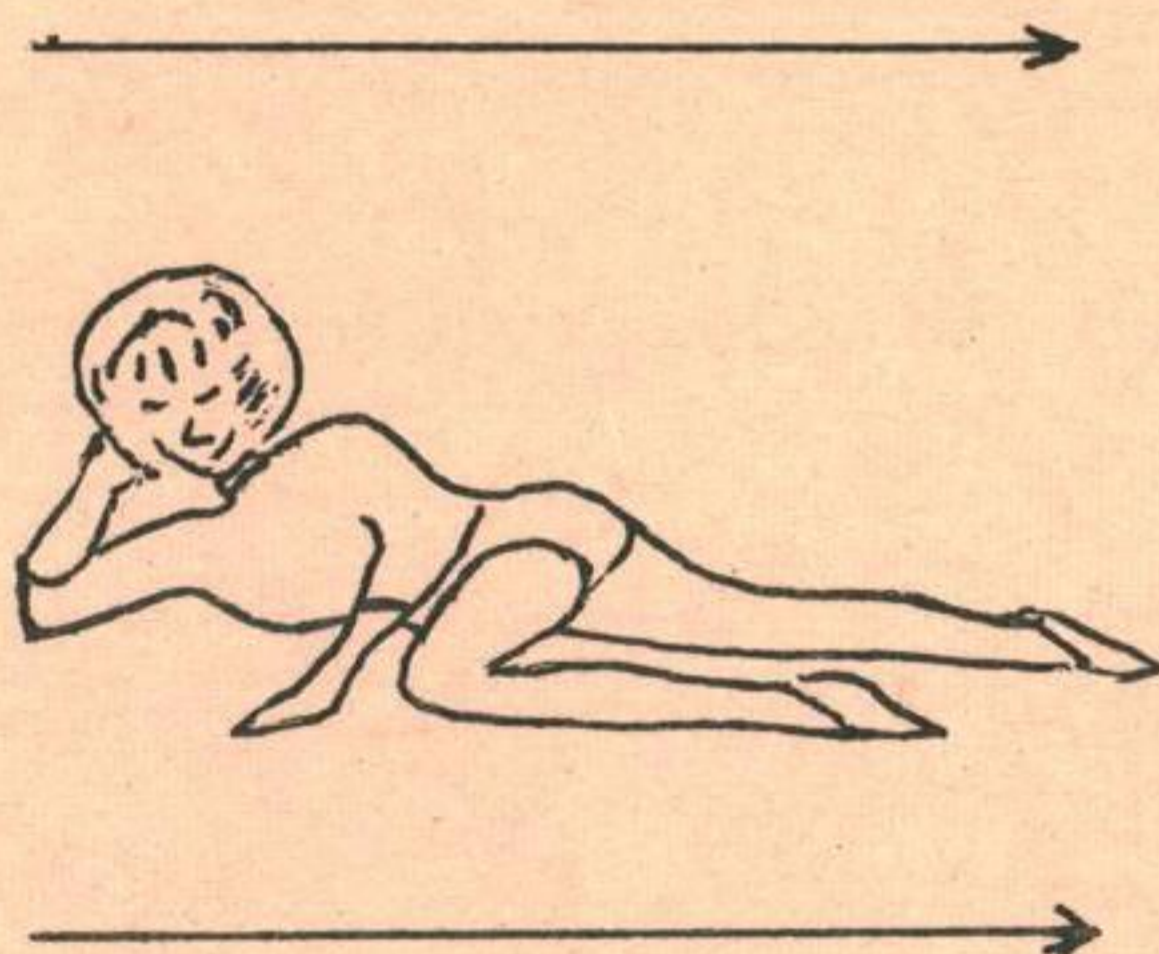


Receiving their CD's for 12 years of service to the Canadian Forces are, from left to right, Cpl. J Glover, Cpl. DW Arms, Cpl. EM Gouthro, Capt. N Reqimbal, Cpl. WC Boran, and Cpl. DB Hickling. Awarding the medals was Col. JF Dunlop, Base Commander, CFB Gimli.

### SOCK IT TO ME

Person or persons who took socks from B.B.#9 dryer. I have the mate to the one you missed. Contact me in room #58 so at least one of us can have a pair!

-Firefighter



## Trim'n'Fit

This exercise column is provided to us courtesy of the Base PhysEd instructors. It goes without saying, that if you can't do 15 repeats the first day, do as many as you can, and don't give up. Work up to 15 slowly, to avoid overstraining muscles. We're going to start with the hips, as this seems to be everyone's biggest problem area.

Here's an excellent movement to help keep the hips and legs slim and shapely.

Lie on your side with the head resting on one hand. Now straighten the top leg and swing it as far to the rear as you can (keep the knee straight and the toe pointed). This is the starting position. On the count of one, bring the knee up towards the chest as high as you can. On the count of two, return to the starting position. Do at least 15 repetitions and repeat with the other leg. Later on increase your repetitions until you are doing 30 or 35 each day.

## GIMLI AUTO BODY

### February Special Prices

DAILY RENTAL, 1970 CAR

**\$3.00 per day plus mileage**

Call Lawrence 642-5137

come to the  
**Gimli MARDI GRAS**  
 costume ball  
**R BANDS**  
 \$2.00 per person

AT THE  
**CFB DRILL HALL**

**FEB 21/70**

**DOORS Open at**  
**8:00 pm**  
**DANCE FROM**  
**9:00 pm to 2:00 AM**



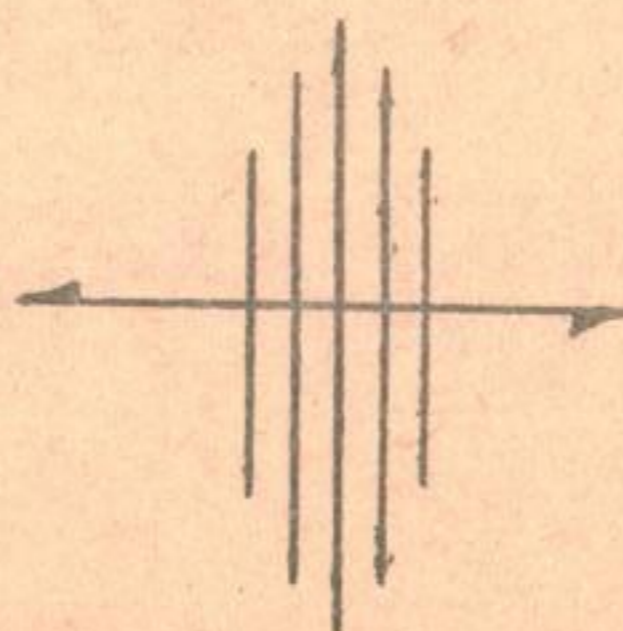
Meine Damen Und Herren:

Ve must make der fasching ein nacht to remember. Vy must ve do dis? Because ve like to haf much fun. So ve get der big bands, und der bars (four of them), und der bratwurst und decorate der big rec centre, und der people come. People mit costumes und people who dont dress up but come anyway (after a few drinks we don't know the difference). Ve haf more fun und gemutlichkeit than was ever before in der Gimli. You come und see! We will be hosting the German Carnival Club from Winnipeg Feb 21st - 8 pm - Rec Centre - tickets on sale at messes - All proceeds to the New Gimli Arena.

**McGREGOR'S DRUG STORE**

WINNIPEG BEACH  
 Just 9 miles  
 south of Gimli.

**MONDAY** 0900 AM- 0600 PM  
**Tues. - Sat.** 0900 AM- 0600 PM  
**Sunday** 1100 AM- 0600 PM  
 Closed Thursday Afternoons



**FEATURING**  
 PHARMACY  
 CLOTHING  
 TOYS  
 HARDWARE  
 MAGAZINES

**' WESTERN CANADA'S LARGEST '**

# WINTER CARNIVAL

★ 27 FEB - 8 MAR ★



CAR RALLY



TORCH-LIGHT PARADE



SNOW QUEEN CONTEST



BRIDGE & CRIBBAGE



BOWLING & VOLLEYBALL

CURLING - BROOMBALL

SKATE-SMOOSH & SNOWSHOE RACES

OPEN HOUSE MONTE CARLO NOVELTY NIGHT

BADMINTON & PING PONG TOURNAMENTS

TUGO-WAR & RIFLE SHOOTING

- Introducing -

*Ski jumping at 50mph behind Power Toboggans*



CARNIVAL DANCE

## Help Choose Carnival Queen

The Carnival Committee would like to encourage any group on the base or in town to sponsor a girl in the Carnival 70 Queen Contest. Those who are interested in doing so are to contact Jack Anslow at 5151 Local 103.

The contestants will be judged on their poise, personality and appearance and the winner will be crowned before the torch light parade on the opening night of the Carnival. The Queen will then preside at many functions during the Carnival.

**TIP OF THE WEEK**  
IS YOUR KETTLE SLOW HEATING?  
Check the cord for warmth near the plugs. See us at..  
GEORGE'S TV/'70  
for repair and scale removal.

# GIMLI



LINDA PENNY

LINDA, sponsored by the Royal Canadian Legion - Branch 182, for Carnival Queen, is a sweet 17 and resident of Aspen Park. You will be able to see her in person Feb 21st at the Mardi Gras.

**Rings are for love.**

**BEN MOSS**  
JEWELLERS EST. 1910  
STARBRITE QUALITY DIAMONDS  
THREE LOCATIONS TO SERVE YOU

# Minor Hockey

Last week saw a very light schedule in the house league as all leagues had a practice in the week and Saturday saw the Riverton teams here for GART league games.

On Saturday morning, at 7 a.m. the Bantams had a league game scheduled between Legion and Canadians, but the Canadians had only 4 players turn up so Legion was by default. The Canadians picked up some Leaf players so the boys had a game which Canadians won by a score of 6 to 3. Kernestead got 2 goals and 1 assist and Aldwinkle got 2 goals and 2 assists.

In the first Tom Thumb game; Leafs swamped Green 6 to 2 with Keith Tucker scoring 3 goals. In the second game, Boston beat Canadians 8 to 2. Grant Knapik scored 3 goals, Randy Martin 1 goal and 4 assists and Dale Martin 2 goals and 1 assist.

In the GART league our Wee Wee outskated Riverton to the tune of 8 to 1, with David Oakley and Melvin Biluk each getting 2 goals and 2 assists. Dwayne Arnason played a strong game in goal for Gimli. In the Tom Thumb game, our boys could not get "on track" against the bigger boys from Riverton and went down to their first defeat of the year by a 7 to 4 count with Kuzik, L'Arrivee, Knapik and Dale Martin scoring for Gimli.

In the last game of the day the Bantams held on to win 3 to 2 in a fast, hard-fought game; Glen Aldwinkle scoring 2 goals Ron Krulicki getting the other. David Lautsch had 2 assists for Gimli. Sylvester played a strong game in goal stopping several breakaways.

Next week our boys are in Fisher Branch.

**PATRONIZE OUR ADVERTISERS**

## GIMLI DART LEAGUE

The Gimli Centennial Dart League consists of six teams, two representing the town of Gimli and four representing the CFB Aspen Park. The games are played on Tuesday nights using all Messes and the Canadian Legion in Gimli.

Listed below are the team standings:

Team	W	L
1 Seargents Mess	54	78
2 Officers Mess	57	75
3 Corporals Club "A"	67	65
4 Legion "A"	73	59
5 Corporals Club "B"	74	58
6 Legion "B"	71	61

## JR. RANKS CURLING

Saturday, 21 Feb 70

- Twenty-four rinks required.
- Enter names in the Jr Ranks Mess (Owl's Nest)
- Teams will be made up by drawing names out of a hat.

This is a fun spiel and Food and Refreshments will be served.

→ SOCK IT TO ME ←

Person who took socks from B.B.#9 dryer. I have the mate to the one you missed. Contact me in Room 58 so one of us can have a pair!

## Central Garage

Prompt Service

Motor Exchanges



Prices on Request

All On Your Gulf Credit Card

Phone 642-5204

## GULF OF GIMLI

## GIMLI FLYING CLUB



**3 Cessnas  
1 Cherokee**

D.O.T. APPROVED  
Private  
Pilot Training

COMMERCIAL  
Pilot  
Training

INSTRUCTORS AND AIRCRAFT ARE AVAILABLE  
EVENINGS, WEEKENDS AND HOLIDAYS.

**CONTACT OUR MANAGER**

Box 122, C.F.B. Gimli - 642-5151, Local 120R3

# BOWLING

## MIXED LEAGUE

TEAM	POINTS	STDN
#1 Knit-Wits	231	1
2 KerPlunks	139	8
3 Sweet Bippys	205	2
4 Tempest's	193	3
5 Eight Plus Two	159	7
6 Spoilers	165	5
7 Also Rans	159	6
8 Beep Beep's	59	12
9 Road Runners	127	10
10 Lo Gs	176	4
11 Boo Bee's	131	9
12 Strike Outs	118	11

Champs of the week-  
Men's H/S Ron Dupuis (307)  
and H/T (878)  
Ladies H/S Polly McRae (331)  
H/T Irene Kenopic(755)

Bowlers of the year-  
Men's H/S Reg Shrimpton (337)  
H/T Ron Dupuis (898)  
Ladies H/S Jo Kemp (338)  
H/T Mary Lou Garrick  
(802)

High Average for year-  
Men Ron Dupuis (245)  
Ladies Gabe MacKinder - Nellie  
Davidson and Joan Trux  
- (201)

## LADIES' LEAGUE

TEAM	POINTS	STDN
#1 Moon Rockets	47	9
2 Vikings	43	10
3 Jinxed	49	8
4 Little Arrows	89	1
5 Belles Babes	63	5
6 Watchamacallus	58	6
7 Miracle Workers	73	3

8 Orbiters	70	4
9 Knock Outs	84	2
10 The Blues	54	7

Champs of the week-  
H/S Joyce Hentig (302)  
H/T Gerry Dupuis (811)

Bowlers of the year-  
H/S Lorna Henry (361)  
H/T Mary Mason (801)

High Average for year-  
Nellie Davidson (200)

## MEN'S LEAGUE

TEAM	POINTS	STDN
#1 B Borthwick	130	4
2 F Auger	133	2
3 D Tucker	144	1
4 B MacKinder	121	5
5 G Shaw	104	7
6 J McInnis	110	6
7 J MacHee	72	8
8 L Stewart	132	3

Champs of the week-  
H/S Doug Tucker (306)  
H/T Ron Dupuis (717)

Bowlers of the year-  
H/S Gil Dery (386) & H/T 881  
Ron Dupuis (239)

# MESS NEWS

## JUNIOR RANKS MESS

SATURDAY, 14 FEB 70  
Dance to the "Four Sharps"  
9:00 P.M. to 2:00 A.M.

SUNDAY MOVIE 15 Feb BLIND FOLD  
Come out and have a cocktail  
and watch the movie....

## OFFICERS WIVES CLUB

The Officers' Wives Club  
are very happy to announce the  
forthcoming wig show, featur-  
ing the very popular Michel  
Rabu, an international trav-  
eller of world renown. A  
full array of wigs will be  
demonstrated and any and all  
personal hair questions will  
be answered. Be sure you  
attend...Monday, Feb 16th,  
Officers' Mess Main Lounge,  
8 p.m. sharp.

# KARDY'S HARDWARE

TWENTY-ONE YEARS OF SERVICE TO GIMLI

GIFTWARE PAINT WE CUT KEYS

WE LOOK FORWARD TO YOUR CONTINUED PATRONAGE.

Centre Street, Gimli Phone 642-8838

# GEORGE'S TV/70

We offer complete service for TV's, Radios and Appliances.

Rental TV's are available while

your set is being repaired.

## SPECIALS

77½ 2nd Ave, Gimli.

642-8138

ONE ONLY; 1970 ADMIRAL COLOUR TV, 25"  
INSTANT ON, WALNUT VENEER  
Only \$675.00 plus approved trade. Three  
year warranty on picture tube and tuner.

PACKAGE OF FOUR 45 RPM RECORDS: Only \$1.00  
-15 packages only, first come, first served

SEND FLOWER POWER ON VALENTINES DAY  
the little corner shoppe  
642-5553 642-8138

# Forces Athlete to Sweden

OTTAWA (CFP) -- A Canadian forces biathlete will represent Canada at the 1970 world biathlon championships, Feb. 19-23, in Ostersund, Sweden.

Cpl. George Rattai of Kenora, Ont., has been training with Canada's national cross-country ski team since last October to prepare for the world meet. Rattai will be sponsored jointly by the Canadian Ski Association and national defence.

Since the snows began this winter, Cpl. Rattai has been on the ski trails with the nationals from their Diamond Head, B.C., camp to



the Laurentians of Quebec. But he hasn't been getting in much rifle shooting time, a key part of biathlon racing! He uses a special Swedishmade, 7.62-millimeter Karl Gustav biathlon target rifle.

Rattai left for Norway's winter warfare school earlier this month for pre-world warm-

ups at the country's winter warfare school. "I hope to get in lots of target practice with the Norwegians," he said. His rifles have been getting a thorough check-out by forces armourers.

The 26-year-old administrative clerk took up Nordic racing in 1965. While stationed at Station Summerside, P.E.I., Rattai spotted a poster asking for volunteers for a forces biathlon team. He volunteered but said he almost quit during the tough pre-training grind at the team's Camp Borden training site. Once on the ski trails, though, he soon changed his mind.

The biathlon is a ski-fast shoot-straight sport and one of the toughest competitive sports in the business. "You have to train the year round to stay in shape," he said. He added that a big factor in biathlon

## TOM-BOY SPECIAL



### MEATS

ROASTING CHICKEN utility grade 4 to 5 lb average 39¢/lb.

Swifts Sugar Plume HAMS  
Whole - 89¢/lb. Half 99¢/lb.  
Center Slice \$1.29/lb.

Prime Rib of BEEF - 99¢/lb.

Minced BEEF fresh ground  
3 lbs for \$1.89

### PRODUCE

CALIFORNIA NAVEL ORANGES  
4 lb. bag 69¢

California Lettuce  
23¢ each

APPLES McIntosh  
Canada Fancy  
5 lb. bag \$1.00

TOMATOES Mexican vine ripe  
29¢ a pound

Watch for our two page flyer for many more specials.....

Peaches. ENSIGN slices or halves 14 oz. 4/\$1.00

OLD DUTCH POTATOES CHIPS  
Twin pac 69¢

MALKIN'S Apple Sauce  
14 oz. 4/89¢

Bathroom Tissue PUREX  
assorted colours  
3 pkgs of two for 89¢

Bread, DUTCH OVEN  
White or brown  
24 oz. loaf, 4/99¢

Canned Drinks, ZING  
Zip top 10 oz. 10/99¢

CHEEZ WIZ 16 oz. 79¢

Prices effective Feb. 12,  
13, and 14.



Coffee NABOB Inst.  
10 oz. \$1.39

Ice Cream CARNIVAL  
Assorted flavours  
3 pint 69¢

MALKINS Peas 14 oz. tin  
4/89¢

**SKIER IN SWEDEN**

racing is developing a fast pulse recovery rate from the 180s while skiing to the 90s for a steady trigger finger. Biathletes snipe small targets at intervals during the race from standing, lying and kneeling positions.

Since 1965 Rattai has competed in a number of Canadian, United States, North American and World meets. In 1968, as a member of the forces national biathlon team, he raced against the world's best at the winter olympics in Grenoble, France. Rattai is also one of CFHQ's top rifle shots. He has competed in a number of forces rifle competitions as a member of the headquarters rifle team.

Earlier this month his ski training paid off. Rattai led an Ottawa ski club cross-country team to

victory in a Quebec international invitational 30-kilometer relay race at Morin Heights, Que.

When the forces' biathlon team disbanded after the 1968 olympics, Rattai returned to his desk in the director-general, maritime systems at CFHQ, not far from some of the best nordic ski country in Canada -- Quebec's Gatineau Hills.

George never let up on his training routine and now spends most of his spare time on the ski trails. During one break in his training with the national team earlier this winter he spent his leave working out alone at the forces Sioux Lookout Station, a one-time base of the forces' biathlon team.

His love of the sport and expertise in biathlon racing may some day pay off for the forces and Canada.

**GM****CHARGE CARDS**

Welcome at-

- TAYLOR PHARMACY
- ARNASON FURNITURE
- CRONSHAWS
- INTERLAKE AGENCIES
- PENTHOUSE BOUTIQUE
- ROBINSON STORE
- TARGET STORE
- JENKIN'S CLOTHING
- VIKING PHARMACY
- VIKING MOTEL

Applications available at all participating stores

**CFB GIMLI AUTO CLUB****MON-FRI 0815 - 2100****SATURDAY 0900 - 1700****OFFERS COMPLETE SERVICE STATION FACILITIES****AT REASONABLE RATES**

←—————→  
 Mechanic on duty daily - Phone Loc 23 for appt.

6 bays available for personal work.

Towing service available.

Gas Oil at most reasonable rates in town.

Parts available for most cars within 24 hours.

Cold weather starts.

◆  
**SERVICE RESTRICTED TO AUTHORIZED PATRONS  
 OF BASE EXCHANGE.**

**NORTH AMERICAN  
LIFE ASSURANCE COMPANY**

Providing programming,  
 Consulting, and Service  
 for Life, Auto, Fire  
 and General Insurance.

—  
 Visiting Base Library,  
 CFB Gimli, on Mondays.  
 G.F. (Kelly) Laliberte  
 and I. Chamish

219 Kennedy St. W.,  
 Winnipeg, WH.3-1526.

**POSTER CONTEST**

There were over 100 entries in the Winter Carnival 70 contest. The Carnival Committee would like to thank all those who entered the contest and also those who assisted in organizing and judging the competition. Winners are:

Gr. 1 1st Sandra Carmichael  
2nd Thomas Holden

Gr. 2 1st Marni Pearce  
2nd Kevin Charron

Gr. 3&4 1st Cindy Magnusson  
2nd Colleen Hart  
3rd Fred Babiak

Gr. 5&6 1st Cheryl Cameron  
2nd Debra Passant  
3rd Blaine Ronning

Gr. 7&8 1st Glen Galbraith  
2nd Darrell Fecto  
3rd Gary Wilson

Gr. 9-12 1st Brian Lovatt  
2nd Elisabeth Shiba  
3rd Ted Chalaturnyk

**BROOMBALL PLAYERS**

**ARISE**

All persons interested in playing Broomball at the Base level are urged to contact Cpl Ranger at loc 129r2 or Cpl Williamson at Loc 52r2.

There will be a practice held at the Gimli Arena next Wednesday 18 Feb at 1030 hrs. for everyone interested in playing for the Base team and competing in the Zone III Broomball Championships at CFB Shilo the 4, 5 and 6 Mar, are urged to attend. If you cannot attend please contact either of the above.

**HAPPY BIRTHDAY**

**SLIM**

J.F.D.

**VOLLEYBALL**

**CHAMPIONSHIPS**

Players from Zone 4 and Zone 6 dominated the 3rd annual Canadian Forces Badminton Championships held at CFB Shearwater from 28-30 Jan. The Man/Sask Zone III team improved over last years performance to place third.

**Team Results**

1st	Zone 4	85½ pts	- tie
	Zone 6	85½ pts	
2nd	Zone 5	69½ pts	
3rd	Zone 3	50 pts	
4th	Zone 7/8	42½ pts	
5th	Zone 2	42 pts	
6th	Zone 9	40½ pts	
7th	Zone 1	32 pts	

**Individual Results**

Veterans doubles - Cameron and Larush - CFB Trenton  
Mens Open doubles - McKee and Higham - CFB Uplands  
Veterans Singles - Cameron - CFB Trenton  
Mens Open singles - Legare - CFB Valcartier

**BASE EXCHANGE**

**MONDAY**  
16 th

**MID FEBRUARY**

**WEDNESDAY**  
18 th

**S A L E**

**O P E N**

MON.-FRI. 1130-2100  
SAT. 1130-1600

**TUESDAY**

17 th

**C L O S E D**

SUNDAYS & HOLIDAYS

**SPECIALS**

**SAVINGS**

**VALUES**

**GOULDING SCHOOL**

If you have a child who will be five (5) by December 31, 1970, and thereby eligible to attend Kindergarten as of the fall term, please call Goulding School, Loc. 134, and give the child's name and birthdate. This pre-registration is to give the school an indication of the number of children to expect in the fall K class.

**Ted's Solo**

SPECIALIZING IN

- \* MEATS
- \* GROCERIES
- \* FRUITS
- \* WE DELIVER

642-5337

**WAYNE'S  
I.G.A.**

CENTER STREET, GIMLI

TABLE RITE REDBRAND  
STEER BEEF  
&  
TABLE FRESH  
PRODUCE

**Girl Guides**

The 2nd Company Aspen Park Girl Guides were hostesses to Area Commissioner, Mrs. Meredith, and District Commissioner, Mrs. Manion, and four parents, on Mon. Feb 9th.

Four new Guides passed their tenderfoot requirements and are now members of the large organization of Girl Guides. As Mary Ann McGrath, Darlene Samagalski, Karen Tucker, and Tammie Wilson, made the pledge to keep the Guide Promise and Law, they received their trefoil pins which are the symbol of Guiding. Congratulations, girls, and thanks to others in the company who have helped you this far. As you try to keep these standards throughout life, remember Lord Baden-Powell's words: "Good luck and may God help you to carry it out."

Following lunch, this special meeting concluded with guests joining in our "Campfire songs".

*There will be a meeting of the Mother's Auxilliary of Brownies, Guides, Cubs & Scout on February 16th, at 8 P.M. at the Goulding School.*

**GIMLI HOTEL RESTAURANT**

New Proprietor-  
Mrs. Christeen Arden

BEST HOME COOKING IN GIMLI

**CENTRAL BAKERY**

Pan bread - 5/\$1.00  
Sliced bread - 5/\$1.10  
Seed bread - Irish and Rye bread - 24¢ for a 16 oz. loaf or, 10/ \$2.20  
Homemade breads, buns, and cakes  
Imported chocolates and cheeses  
Hot pizza to go - baked to your order in 15 min.

**-BAKED FRESH DAILY-****GIMLI  
TAILOR**

Gent's Suits  
and  
Officer's Uniforms

MADE TO MEASURE

With four to six  
weeks service

Next to the

LAKE INN Restaurant

Center Street  
&  
First Avenue

**GIMLI HOTEL**

ROOMS \$3.25 per night

With Bath \$4.25

**Band**

Wed. - Sat 9-12

# ARNASON FURNITURE

## ELECTROHOME

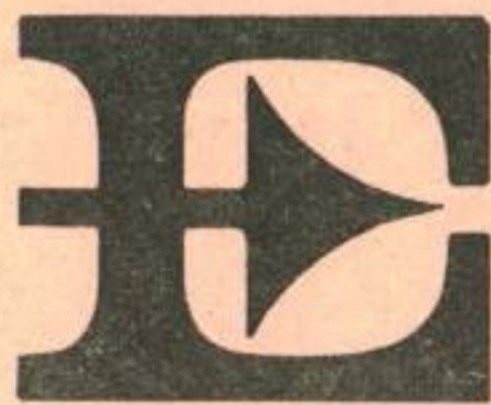
### FURNITURE OF TIMELESS BEAUTY

*Crystal clear Stereo, with handsome cabinets. Electrohome gives you a beautiful furniture choice. Go Spanish all the way with the Madeira stereo.*

#### MADEIRA

*Dual 1210 turntable, Philharmonic cartridge, speaker system of 2-10", 4-3½". Deilcraft cabinet of Autumn Oak. 44" wide, 28" high, 16" deep. 80 watt, all transistor, perfectly balanced speaker system, equipped for exclusive Electrohome Satelite Sound, Environment One, Remotes, Tape Recorder.*

REGULAR  
\$589.00  
SALE  
\$489.00



## INTERLAKE AGENCIES LTD.

For your Auto, Fire, and Casualty

Insurance needs phone

DICK ARNASON 642-8859

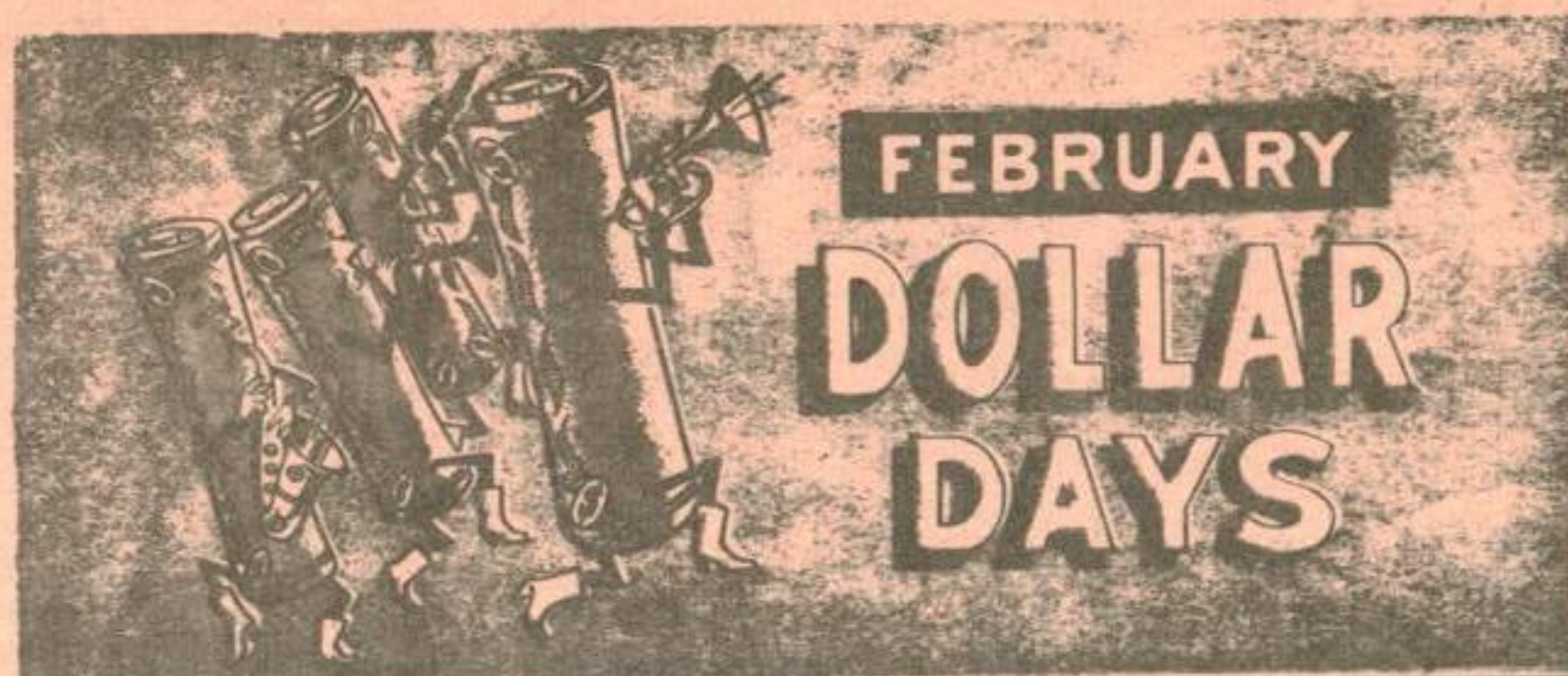
ALL CLASSES of INSURANCE

and

REAL ESTATE



Save On Quality Household Needs



ROBINSON STORES  
Sale Feburary 19

Ladies' ACRYLIC PULLOVERS

- CREW NECK STYLE
- LONG SLEEVES
- FULL FASHIONED

Reg. 4.00 Each

SPECIAL

3.00

Special low price for this full fashioned acrylic pullover sweater. You can't have too many of these wardrobe fresheners... so buy now. Colors: Red, Green, Turquoise, in ladies' sizes S-M-L.



SAVE ON EVERYDAY HOME NEEDS



Corduroy Cushion Covers

Renew your cushions or create new ones with these long-wearing, color-bright covers. Box edge size about 12 by 12 inches. Choose from a good color assortment. Sale priced!

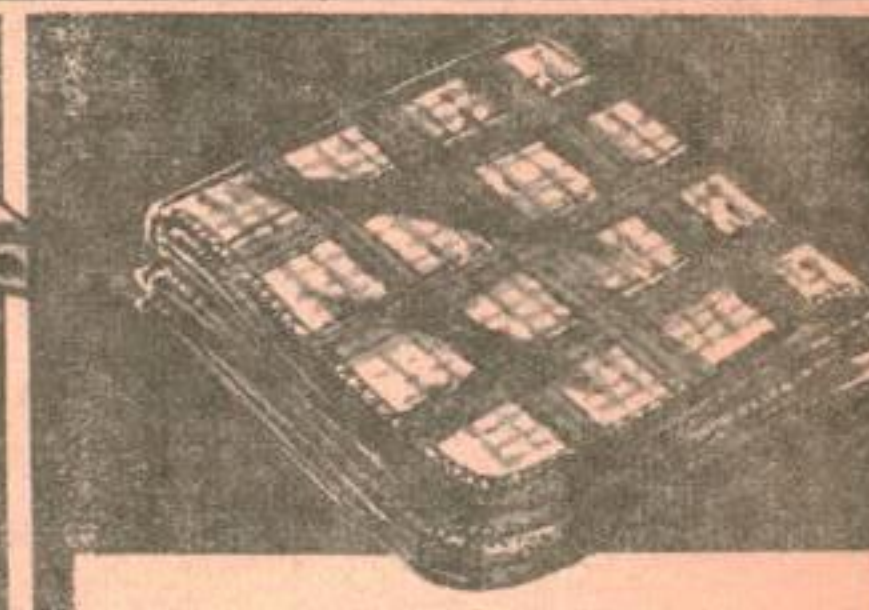
Reg. 1.29 Each  
SPECIAL --- 1.00



Linen/Cotton Dish Towels

An attractive, good-quality linen and cotton tea towel, in multicolored stripes. Size: 16 by 28 inches. Assorted colored stripes. Replenish your supply at savings.

Reg. 39c Each  
4 FOR ---- 1.00



Dish Cloth Sets

Attractive, serviceable dish cloths in multicolored woven checks. Size about 14 x 14 inches. Two styles to plio pack of 6 dish cloths. On sale while they last!

6 FOR ---- 1.00

Values Were Never Greater

Ladies' Nylon Stretch  
**PANTY HOSE**  
Reg. 1.39 Each  
**1.00**

Fashion favors this first-quality, all-in-one hosiery garment. Gar-turizes flatness combines dress sheer stocking with all nylon heavier weight panty. Beige, Taupe. Sizes: S-M-L-XL.

**PLASTIC MEMO CADDY**  
Reg. 1.39 Each  
SPECIAL **1.00**

A decorative way to help organize mail, grocery lists, memos, etc. Three memo slots and three hooks on bottom for keys or miscellaneous items plus a handy shelf for pencil and pen. Sizes: 5 1/2" wide, 20" long. Assorted colors.

**Assorted Beverage GLASSES**  
Reg. 29c/39c Each  
6 FOR **1.00**

New "Coin" design. Heavy sham bottom. A smart assortment for general purpose use. Colors: Honey Gold or Avocado. Sizes: 6-oz. juice, 9-oz. old fashioned, 12-oz. water glass. Mix or match. Special purchase... special sale price.



Ladies' Rayon BRIEFS

Fine quality rayon tricot panty briefs. Elastic at waist and leg openings, double crotch, full cut for comfort. Colors: White, assorted pastels. Sizes: S-M-L.

Reg. 49c Each  
3 FOR **1.00**



Toddlers' Fleece PYJAMAS

Mom, here's a wonderful value! Cute, cozy fleece pajamas for the little tot. Juvenile printed top with plain shade pants. Sizes: 2, 3, 4. A thrifty price, select early!

Special Purchase  
SALE! **1.00**  
Each



Girls' Perma Press T-SHIRTS

Mom, shop early for this T-shirt special. They are Perma Press, in turtleneck, long sleeve style. Plain colors or woven floral or stripe patterns. Little girls' sizes: 4 to 6X.

Reg. 1.49 Each  
SPECIAL --- **1.00**

LITTLE GIRLS' SLIMS

Carefully tailored from serviceable cotton denim, full boxer waist, one back pocket. Canadian made. Assorted colors, little girls' sizes: 3 to 6X.

Reg. 1.49 Each  
SPECIAL --- **1.00**

# The MART

## HOUSES FOR SALE

3 large Bdrs. New gas furnace. 4 pc. bathrm, utility room. Well tree'd lot - 66' x 128'. House 1,072 sq. ft. 2 storey shed 20' x 16'. Excellent location, asking \$10,600 - open to offers. For further info call 642-5102. Available 15 Mar 70.

3 Bdrs., large kitchen, living rm 11 x 18, full basement, gas furnace. Centrally located on Third Ave. Gimli. Well tree'd lot - 66 x 128. For further info call 642-8184.

## HOUSES FOR RENT

2 Bdr. Suite - New Bldg.- Gas Heat, Washing Facilities. Located 113-5th Ave. For information call Kardys Hardware - Phone 642-8838, evenings 642-5251.

3/4 mile west of airport or Fraserwood Road. Partly furnished. Hot and cold water. Available 1 Mar 70. Phone: 642-5687

## AUTOMOBILES

1969 Fairlane 500, 6 cyl. automatic - \$2,550. Phone 642-8870.

1967 Plymouth, 4 Dr - V8, P.S. Radio, 2 extra rims and tires. Phone 642-8242.

1961 Pontiac Strato-Chief. A-1 condition. Original mileage 41,000. Clean, well cared for car. Ph: 642-8821.

1958 Plymouth Sedan. No. 70F Crower Cam. All engine components new or rebuilt. 6000 miles on engine. Asking \$300 or nearest offer. Contact Cpl Headon 5151 loc 66 or 5037

## MISCELLANEOUS

FOR SALE: 12' Glendale Travel Trailer, 2 Burner Propane Stove, Fridge, Sleeps 5 - comes with canopy. Phone: 642-8242.

FOR SALE: Inglis wringer washer; Phillips stereo; Bookcase bed; Sectional Chesterfield; Men's hockey equip. - gloves, elbow and shin pads, pants. Phone: 642-5627 after 5:30 p.m.

FOR SALE: Baby carriage in good condition. Phone: 642-8231.

FOR SALE: 4 barrel carburetor with intake manifold to fit 318 cubic inch Chrysler engine. Contact Cpl Chuck Gentes at Loc 61 or 5446.

TO GIVE AWAY: One small puppy - 8 months old - short haired - part dash-hound - house pet. Contact Debbra McLeod - 5934.

S-T-R-E-T-C-H and SEW SEWING COURSE - Another S-T-R-E-T-C-H and Sew course will be starting soon. Learn to sew on all the new KNIT fabrics. Many types of men's, women's and children's clothing will be demonstrated in this popular 8 wk course. For more info there will be an introductory night on Wednesday Feb. 18. Course will start on Wed. Feb. 25. PHONE: 642-8135 (evenings) Mrs. A. McCloskey

VALENTINE HOME BAKE SALE Gimli Hotel Dining Room Sat - Feb. 14 - 2 p.m. Holubchi - Peroghys - Vinarterta - Pies - Bread - Buns - etc. Touch and Take-Table. Valentine Cake Raffle. Entire proceeds for Gimli Skating Rink Building Fund. Sponsored by Gimli Good Neighbours.

## THE FRAMFARI X-WORD

S W I M M I N G H H M F T S P  
I G B N W O N S Q O S U N E A  
N R O E W O O H U C U K N P R  
N E W P A O C S E K A I A A A  
E L L R M R T T E E W L W T D  
T I I S A A D I N Y L O C A E  
E B N M C L I L M I G U R C L  
L D G H B L A N C U R T N A C  
B M E E I A A V T L S A V S R  
A W F P A B I P I E D I N E I  
T O Q U E M R N A T N E U C B  
T N E C I O G I M R S A F A B  
O S S T R O P S A A T E N R A  
Y L L A R R A C B N E Y F C G  
E G D I R B A D M I N T O N E

Listed below are the words that you will find hidden in the puzzle above. These words are spelled out in all directions, so look very carefully. By assembling, in order, you will find today's hidden word which will be published next week. This week's hidden words have 18 letters.

LAST WEEK'S ANSWER:  
WORLD HOCKEY

#2

## THE GIMLI WINTER CARNIVAL

AIR	ICE
ALL	MAINTENANCE
BADMINTON	MARCH
BASE	MOUSTACHE
BEARD	PARADE
BOWLING	PARTY
BRIDGE	SKATE
BROOMBALL	SMOOSH
CARNIVAL	SNOW
CAR RALLY	SPORTS
CRIBBAGE	SWIMMING
CURLING	SUN
DANCE	TABLE TENNIS
DARTS	TEAM
FEB	TOQUE
FESTIVAL	TOWN
FUN	TUG-O-WAR
FTS	WINE
GIMLI	QUEEN
HOCKEY	RACES
H.Q.	