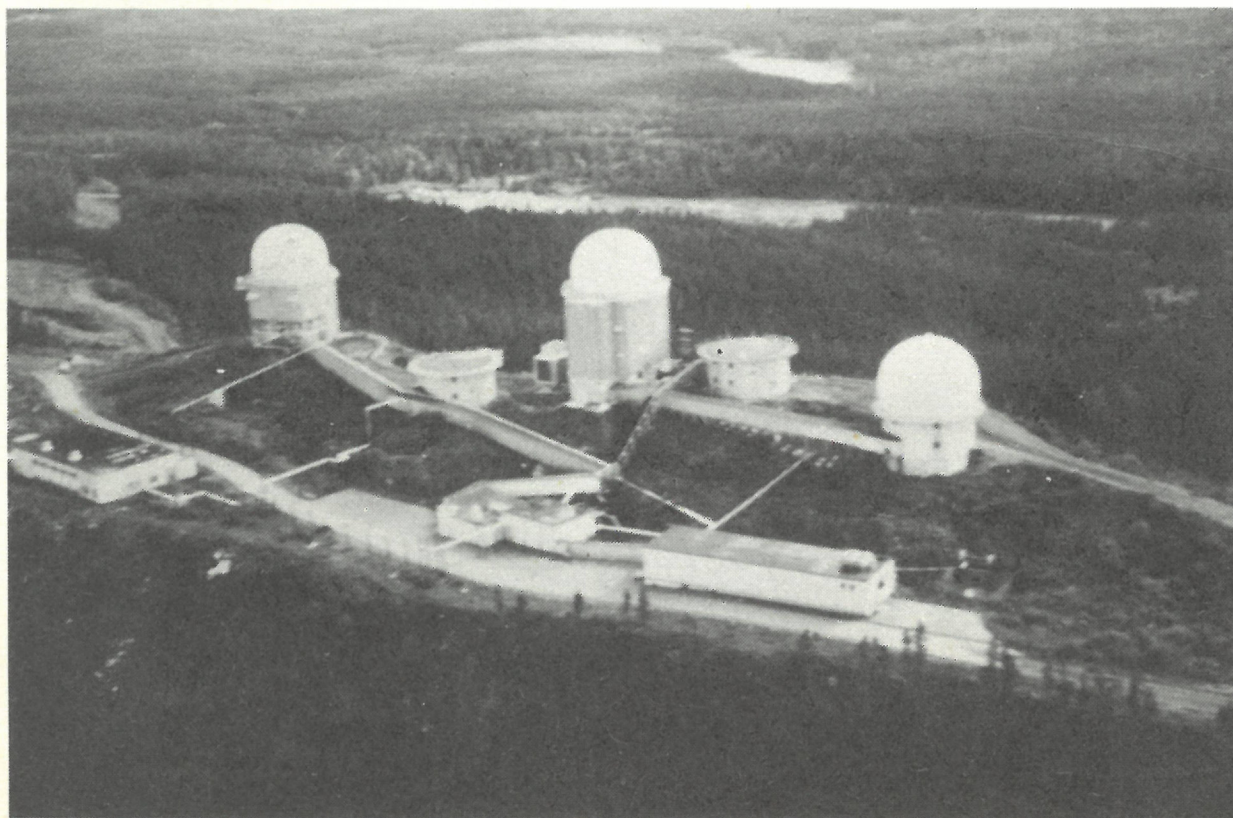


# **STATION INFORMATION BOOKLET**



**CFS Baldy Hughes**

USEFUL TELEPHONE NUMBERS

CO	300
CAdO	301
Station Administrative Service Co-ordinator (SASC)	354
CGEO	330
Duty Operations Officer	204
Station Orderly Room (NCO i/c)	305
Accounts (NCO i/c)	346
Supply (NCO i/c)	356
MT	359
MOV	352
SCEO	320
Fire Hall (NCO i/c)	388
Military Police (NCO i/c)	365
MIR (NCO i/c)	315
Combined Mess (NCO i/c)	317
Recreation (NCO i/c)	312
Exchange	329
Officers' Mess	361
Senior NCOs' Mess	362
Junior Ranks' Club	363

Station Telephone Number - 562-1141

MESSAGE FROM THE COMMANDING OFFICER

Welcome to Canadian Forces Station Baldy Hughes!

Your happiness and well-being on this station will, to a large extent, depend on you. You are strongly encouraged to take full advantage of local and station facilities. On the other hand, you may find that you will be called upon to contribute more to the general welfare of the station than what you have been accustomed to doing in the past, on larger bases. It is only by co-operation between all of us that we can derive maximum benefit from our time here.

It is sincerely hoped that your tour will be rewarding and memorable.

CANADIAN FORCES STATION BALDY HUGHES

BALDY HUGHES, B.C.

A brief history of Canadian Forces  
Station Baldy Hughes and general  
information on the surrounding area.

Prepared under the direction of

The Commanding Officer

Canadian Forces Station Baldy Hughes

### ROLE

CFS Baldy Hughes is a radar unit within the 25th North American Air Defence (NORAD) Region which forms part of the vast NORAD defence network.

The role of CFS Baldy Hughes is:

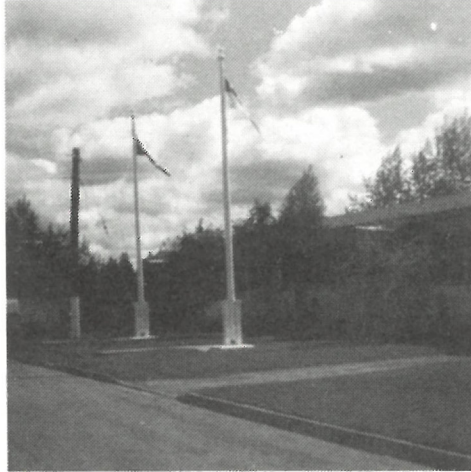
- a. the conduct of Long Range Radar (LRR) operations;
- b. the concurrent support of air defence operations in Canada and the United States in defence of the NORAD area;
- c. the protection of military vital points; and
- d. the provision of assistance for civil emergency operations.

The station also provides support services to 11 Dental Unit (part-time dental clinic), 741 Communication Squadron, and Cadet Units located in the area.

BRIEF HISTORY OF CANADIAN FORCES STATION  
BALDY HUGHES

Until March 1963, Baldy Hughes was owned and manned by the USAF and used for the manual control of interceptors. The RCAF took over the Station on 1 March 1963, just as it was about to be integrated into the SAGE system in the Seattle Sector, 25th NORAD Region. This integration was completed by the end of June 1963, at which time the USAF operations personnel returned to the United States.

To the uninitiated, the name Baldy Hughes conjures up a misleading vision but everyone reporting in to the Station is very pleasantly surprised. Baldy Hughes is 26 miles southwest of Prince George, B.C., on a road which winds through some rugged scenery following the trail of the old Cariboo Wagon Road. Mr. Hughes, known as Baldy, used to operate a remount station for the stage liners on the site of what is now the domestic area. The Radar installation is on top of a nearby mountain which is also named after him. If the Station had been situated a few miles south, we could have rejoiced in the name CFS Sourbeans MacKenzie, named after the man who ran the next remount station down the road. Needless to say, we are content to bear our present name.



Station Headquarters

REPORTING IN PROCEDURES

On arrival during normal duty hours, (0800 - 1200 hrs; 1300 - 1630 hrs) officers will report to the CAAdO, and personnel of other ranks will report to the Station Orderly Room for further instructions. The CAAdO and the SOR are located in the Station Headquarters Building.

For personnel living in Prince George, there is a charter bus service available to and from work; bus route maps are enclosed. Information on the transportation cost may be obtained from Accounts. There are also scheduled DND runs between Baldy Hughes and Prince George throughout the day.

All personnel reporting to the Station after normal duty hours will contact the Military Police at the Guard House.

## LOCATION

Travel to CFS Baldy Hughes may be by road, air, or railway.

### a. Road

If proceeding by PMC, Prince George is accessible from the east and from the south. To approach from the south, turn north off the Trans Canada Highway at Cache Creek, BC and proceed on Highway #97 for 289 miles to Prince George. To approach from the east, go on Highway #16 northwest from Edmonton to Jasper, then to Prince George.

From Prince George, proceed west on Highway #16 (towards Prince Rupert) for approximately eight miles to the Baldy Hughes sign, and then seventeen miles south (left) to the Station; all highways are paved.

Charter bus transportation is provided from Prince George to Baldy Hughes and return (see enclosed route maps). Information on the transportation cost may be obtained from Accounts.

### b. Air

Travel by air (CPA & PWA) is available to Prince George from both Edmonton and Vancouver.

### c. Railway

The B.C. Railway operates between Prince George and Vancouver and the Canadian National operates between Prince George and Edmonton. Both railways operate three times weekly.

### d. Bus

Buses operate daily to Prince George from Vancouver, Edmonton and Prince Rupert.

Mileage from PRINCE GEORGE to

Vancouver	511
Cache Creek (Junction of Trans Canada and Hwy 97)	289
Prince Rupert	478
Edmonton via Jasper	488

## VEHICLE REGISTRATION

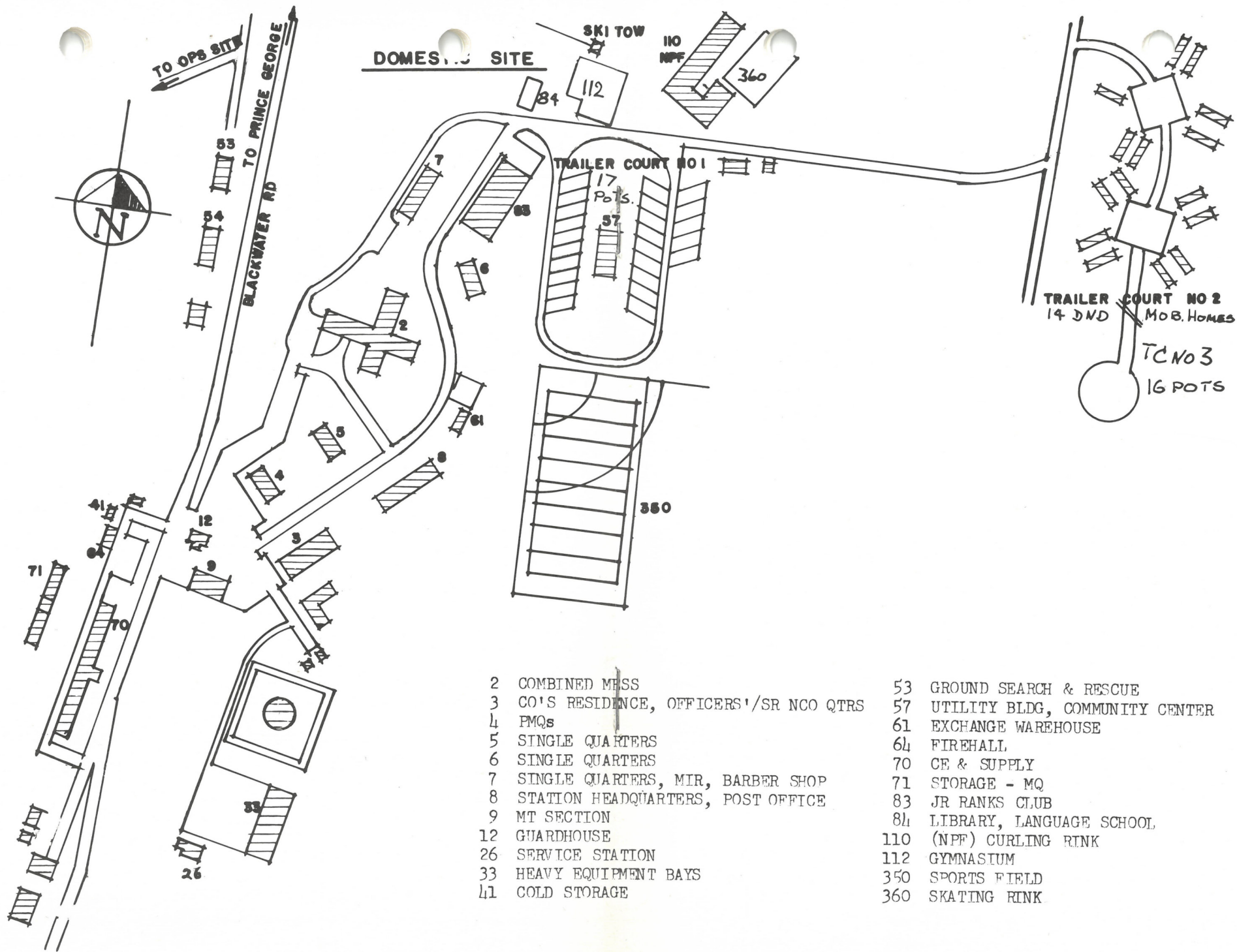
The following rules pertaining to the licencing and operation of Motor-vehicles are in effect in this province and on this Station:

1. Motor-vehicles and trailers shall be registered at the earliest opportunity, but in any event not later than thirty days after the motor-vehicle or trailer is brought into the province. The motor-vehicle serial number must be checked and verified by the Motor Vehicle Branch in conjunction with registration. BC AUTOPLAN Insurance is compulsory on all motor-vehicles registered in British Columbia.
2. Every driver is to be licenced in this province within six months of taking up residence. Members of the CF on TD for a period not exceeding six months are exempt from this ruling.
3. A Station Sticker is required for entry of privately owned vehicles to CFS Baldy Hughes. A Station Safety Check and proof of insurance are required before a Station Sticker can be issued. Station Safety Checks are carried out by the MSE Section. Valid British Columbia Safety Checks are also accepted.
4. Speed limit on the Station and Trailer Park is 15 M.P.H. Speed limit on the road to Ops Site and GATR is 20 M.P.H.

## WEAPON REGISTRATION

All single personnel living-in at CFS Baldy Hughes must register their private firearms with the Military Police and store them in the Arms Lockup in the Station Guardhouse.

Married personnel who will be living on the Station are allowed to keep their private rifles and shotguns in their homes. Ammunition and weapons must be stored separately and out of reach of children. All pistols must be registered and stored with the Military Police.



## STATION FACILITIES

### Post Office

The Post Office and individual boxes are available to all personnel. Hours of operation are 0900 - 1435 hours Monday through Friday.

The correct mailing address for this Station is:

Name  
Box Number  
Canadian Forces Station Baldy Hughes  
Baldy Hughes, B.C.  
VOJ 1CO

### Housing

The Station has five apartments, 14 government owned trailers, and 30 pads for Privately Owned Trailers, the latter located in two trailer courts. A floor plan of the government owned trailer is enclosed for interested married personnel. There are limited storage facilities available for personnel residing on the Unit. Single personnel both service and civilian are housed in three barrack blocks. Housing in Prince George is available with 1 to 4 bedroom apartments costing from \$165.00 and up per month, plus utilities.

### Schools for Dependants

Dependants residing on the Station attend the following schools:

Kindergarden to Grade 7 - Beaverly School  
Grades 8 to 10 - John McInnis Secondary  
Grades 11 & 12 - Prince George Senior Secondary.

Children are transported to school by charter bus which departs at 0800 hrs and returns at 1600 hrs.

The College of New Caledonia provides post Secondary vocational training as well as second year Arts and Science on a university transfer program. This transfer program may also be covered by evening classes.

It is recommended that all pertinent records and transcripts of dependants' academic standing be brought so as to easily facilitate enrolment in the BC school system.

### Medical

An MIR staffed by two Medical Assistants is located on the Station. Treatment and medical examinations are carried out by two doctors under contract with DND in Prince George. X-ray and other than routine laboratory work is done in Prince George.

The hospital (Prince George Regional Hospital) is modern and well-equipped. There are a number of medical specialists and most problems can be handled right in the city.

## Dental

A CF dentist visits the station twice yearly. Emergency dental cases are treated in Prince George.

## Chapels

Services are held in the Station Theatre in the Administration Building at the following times:

Roman Catholic on Saturday at 1900 hours.

Protestant - Every second Sunday at 1100 hours.

Civilian officiating clergymen from Prince George serve as Padres for the personnel on the Station.

## Food Freezers

Forty-eight food freezer lockers are located on the Station and are available for rental to personnel at .50¢ per month.

## Library

For your reading pleasure there is a well stocked Station library. There are books available in all categories, including fiction, non-fiction, reference and children's books; there is also a good selection of paperbacks.

## Barber Shop

The Barber Shop is located in BB#7 and is open Mondays only.

## Exchange/Snack Bar

The Exchange/Snack Bar is located in the Combined Mess Building and is open every day including evenings. A large stock of goods is available including gift ware, toiletries, some groceries and seasonal sports/recreational equipment. Many items may be specially ordered.

## Gas Pumps and Auto Hobby Club

A two bay garage is available for do-it-yourself servicing. The gas pumps are on a self service basis. Keys for gas pumps and bays may be obtained from the Guardhouse, 24 hours per day.

## Sports and Recreation

### Badminton

The Prince George Badminton Club welcomes prospective members from the CF.

### Bowling

Baldy Hughes has two fine five-pin bowling lanes.

### Broomball

A winter league exists on the Station using the outdoor skating rink.

### Curling

Baldy Hughes has an active curling club. There is a two-sheet rink on the Station equipped with a lounge and bar.

### Fish and Game

CFS Baldy Hughes has an active Rod & Gun Club which caters to all outdoor recreation enthusiasts.

The membership is on a yearly basis with a membership fee of \$5.00. The Rod & Gun Club has five boats and four motors which are rented to all station personnel, with a reduced rate for Club members. The Club also has a snowmobile which is rented for a reasonable fee. There is a club house which is a log cabin situated three quarters of the way up the mountain towards the Operations Site.

There is no finer or more varied hunting in Canada than in the area surrounding CFS Baldy Hughes. There are moose, bear, deer, upland birds, migratory birds, and within 300 miles cariboo, goat, elk and grizzly bear.

The fishing is also superb with the most common fish being the Rainbow Trout. Other fish species found in local lakes and streams are Salmon, Char, Kokanee, and Arctic Grayling.

For the outdoor sportsman, Baldy Hughes has a fine collection of fish and game and some of the best scenery in the world.

### Football

An inter-section flag football league operates through the autumn.

### Golf

There are two golf courses in Prince George. The Station Golf Club holds two shares which entitles station personnel to become members at a substantial saving.

## Gymnasium

A fully equipped gymnasium is located on the station.

## Movies

An excellent selection of movies are received each week. These films are provided free of charge by the Canadian Forces Movie Guild.

Movies are shown at the following times:

Officers' and Senior NCOs' Mess	-	2000 hrs	Sun.
Junior Ranks Mess	-	2030 hrs	Wed. & Sun.
Theatre (Matinee)	-	1430 hrs	Sun.

## Skating

An outdoor rink is provided on the Station in the Winter. Two indoor arenas are available in Prince George.

## Skiing

There are two excellent ski areas within easy driving distance of Prince George. Purden Mountain located 10 miles east of the city has a chair lift and a T-Bar; Tabor Mountain located 15 miles east of the city has a T-Bar and a rope tow. Both mountains have runs in excess of two miles with degrees of difficulty varying from the most advanced calibre down to beginner slopes.

## Softball

An inter-section league operates on the Station; a Station Representative team plays in the Prince George Senior "C" League if personnel are available.

## Swimming and Boating

There is no pool on the station but swimming facilities exist within easy driving distance of the station. A swimming pool is leased in Prince George once a week during winter months. Power boating and water skiing are excellent in the immediate area.

## Winter Carnival

A Station Winter Carnival is held on the Station each year. This carnival runs for three days and encompasses sports, social activities and a Snow Queen Pageant.

## Other Activities

### Wives' Club

There are two Wives' Clubs operating under one executive organization, one located on the Station and the other in Prince George. Both clubs meet monthly and are open to wives of all service and DND employees.

### Officers' Mess

Located in the Combined Mess Building.

### Senior NCOs' Mess

Located in the Combined Mess Building.

### Junior Ranks Club - Club 54

Located in building 83.

### Station Newspaper

The "Baldy Bulletin" carries information on Station activities, various other news items and information of interest to personnel and their families.



- b. The College of New Caledonia Vocational School and Jr. College (2 years Arts and Science)
- c. Libraries
- d. Doctors, Dentists,  
Hospital - fully modern and equipped with 382 beds
- e. Churches (20 Christian Denominations)
- f. Shopping facilities
- g. Many Hotels and Motels
- h. Garages and Service Stations
- j. All forms of recreation
- k. Radio - CKPG at 550 Kc)  
CJCI at 620 Kc) both AM
- m. TV - CKPG-TV on Channel 2 - CBC Network  
CTV on Channel 12 - CTV Network
- n. Newspapers - Citizen - daily Monday thru Friday  
(see inside back cover)

NOTES

PRINCE GEORGE, B.C.

INFORMATION -

Prince George Chamber of Commerce  
1198 Victoria Street

562-2454

NEWSPAPER -

The Citizen  
160 Brunswick Street

562-2441

HOSPITAL

Prince George Regional Hospital  
2000 - 6th Avenue

564-4411

SCHOOLS -

School District No 57  
Administration Office  
1891 - 6th Avenue

563-3694

(Elementary, Junior Secondary, Senior Secondary)

The College of New Caledonia  
2001 Central Street

562-2131

(transferable credits for first and second  
year university)