



INFORMATION BOOKLET



CANADIAN FORCES STATION

BEAVERLODGE

COMMANDING OFFICER'S MESSAGE

Welcome to Canadian Forces Station Beaverlodge.

This booklet has been published to assist you in relocating to this station and to provide some general information about the local area prior to your arrival.

The station is located on Saskatoon Mountain in the heart of the Peace River Country of Alberta, 312 road miles northwest of Edmonton. Saskatoon Mountain is 27 miles west of Grande Prairie and 12 miles east of Beaverlodge.

The primary mission of CFS Beaverlodge is to provide warning to Canada and the United States in the event of an air attack and to aid in repelling the attack through the control of interceptor aircraft.

Operational control of the station is assigned to the 25th NORAD Region at McChord AFB near Tacoma, Washington, while administrative control is vested with Air Command Headquarters, Winnipeg.

On behalf of all personnel on the station, I extend a warm welcome along with the hope that your tour here will be pleasant, memorable, and a valuable experience for the future.

Commanding Officer
Canadian Forces Station Beaverlodge

TRAVEL INFORMATION

AIRLINES

CP AIR flies into Grande Prairie from both the Edmonton International and Vancouver Airports.

TIME AIR flies into Grande Prairie from major Alberta cities as well as from the Edmonton Industrial (downtown) Airport.

P.W.A. flies into Dawson Creek, B.C. from the Edmonton Industrial and Vancouver Airports.

BUS SERVICE

CANADIAN COACHWAYS departs 3 times daily from both Edmonton and Dawson Creek to Grande Prairie and Beaverlodge.

TRAINS

There is no passenger train service into Grande Prairie.

MAILING ADDRESS

The station address is as follows:

Canadian Forces Station Beaverlodge
Trumpeter, Alberta
TOH 3LO

REPORTING IN

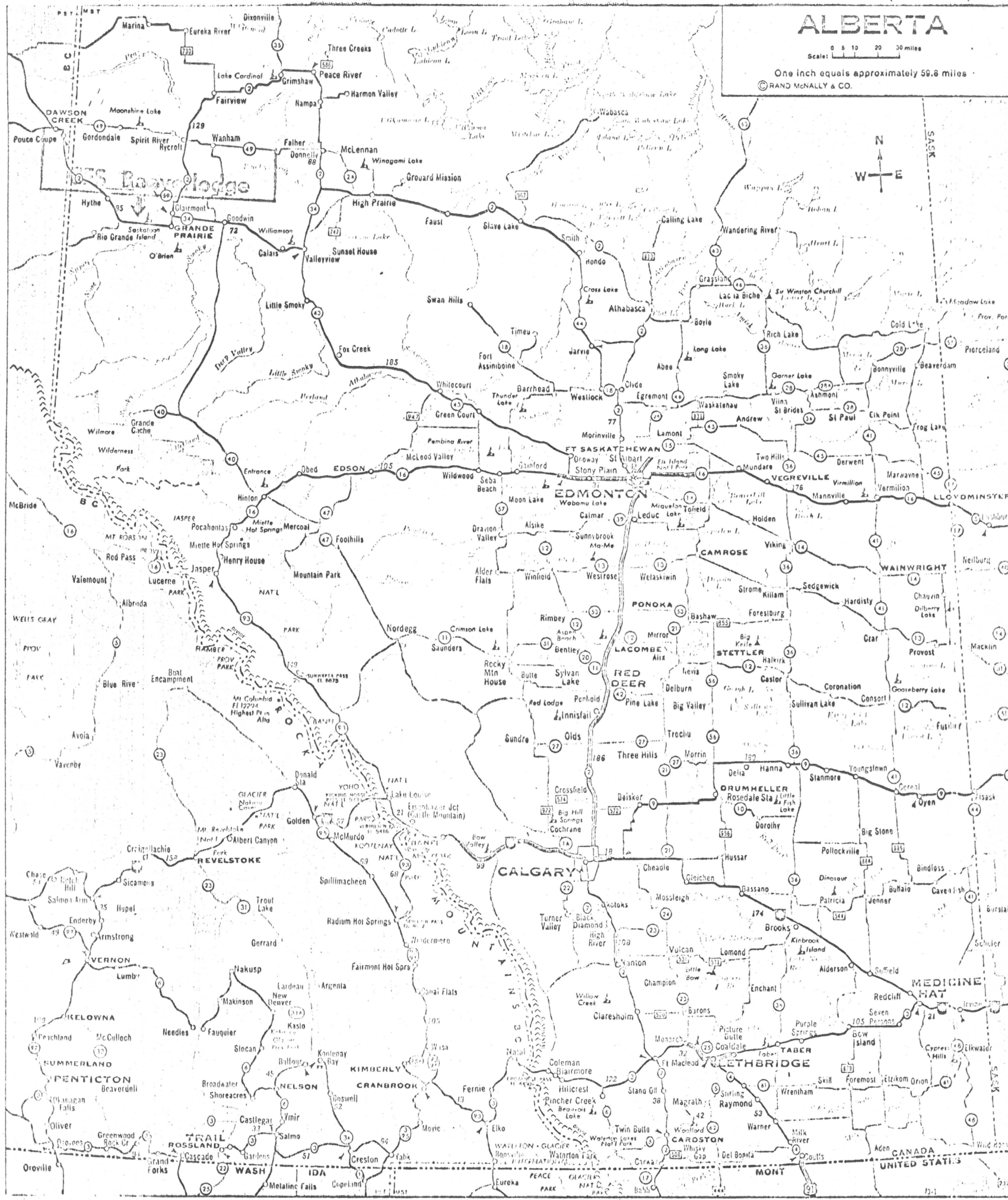
On arrival during normal duty hours, all personnel will report to the Orderly Room to receive instructions for signing in and processing.

All personnel arriving on the station after normal working hours will report to the main gate.

ALBERTA

Scale: 0 5 10 20 30 miles

One inch equals approximately 59.8 miles
© RAND McNALLY & CO.



HOUSING

DND TRAILER PARK - TOWN OF BEAVERLODGE

There are 36 PMH's in the Town of Beaverlodge, renting for _____ per month including utilities. These are all 3 bedroom trailers, partially furnished with a good brand of furniture. Partially furnished means that major household items, like beds, dressers, fridges, stoves, washers, dryers, kitchen suites, chesterfields and chairs are provided. You provide linen, kitchen utensils and personal effects. The trailers have a floor space of 676 square feet and storage space is extremely limited. The F&E allowed to accompany a serviceman accepting one of these trailers is 550 lbs per couple plus 350 lbs for each child. New arrivals are provided with pre-packaged kits containing linen, and kitchen utensils, designed to hold them over until their own effects arrive.

CFS BEAVERLODGE - PRIVATE TRAILER LOTS

There are 18 trailer pads for privately owned trailers on the station proper, renting for \$30.00 per month plus utilities.

CIVILIAN HOUSING

Housing in the civilian communities of Beaverlodge (pop 1400), Wembley (pop 240) and Grande Prairie (pop 16,600) is available but expensive. The average rental, unfurnished, is \$150.00 for one bedroom, and \$165.00 to \$245.00 for two or three bedrooms. Utilities average from \$50.00 to \$70.00 per month over the year.

BARRACK ACCOMMODATION

Single personnel, and those unaccompanied by families, are housed in modern permanent type buildings on the station.

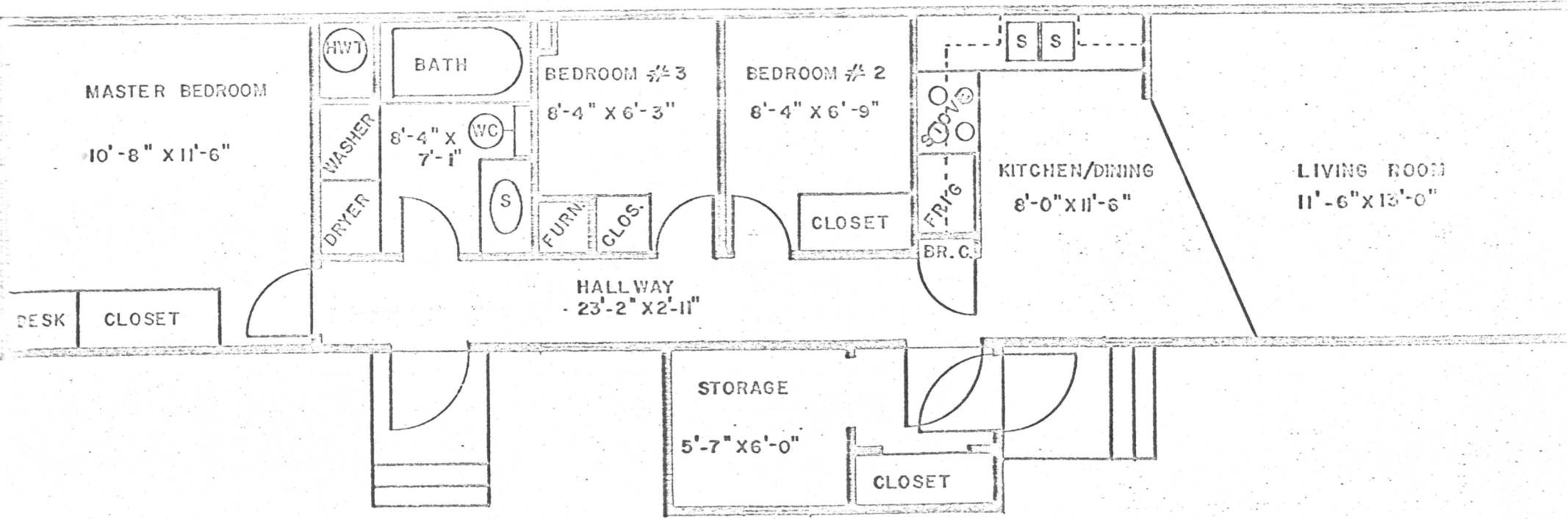
CAUTION

CFS Beaverlodge is listed as a limited accommodation area and an isolated place in a/w CFAO 20-43.

Married personnel posted to this unit should contact their Movements/Orderly Room staff regarding the restrictions on moving DF&E and the limits on interim lodging. Failure to do so may result in excess personal cost of move which cannot be reimbursed. For those personnel who are posted from outside Canada, an isolated post or an isolated place the provisions of CFAO 209.23 and CFAO 20-43 apply. Members should contact their Movements/Orderly Room staff for the latest information regarding a selected place of residence (SPR), and/or a move to an alternate location, and/or a direct move with their family prior to making a decision concerning their posting to this station.

CFS BEAVERLODGE,
MOBILE HOME
AT PMH PARK,
BEAVERLODGE, ALBERTA

56'-0"



SCALE - 3/16" = 1'-0"
 DWG NO.
 L-D58-7001-301

SCHOOLS AND CHURCHES

SCHOOLS FOR DEPENDENTS

Public schools in both Grande Prairie and Beaverlodge offer schooling from kindergarten to grade 12.

The Separate School System offers schooling from kindergarten to grade 12 in Grande Prairie, and from kindergarten to the 9th grade in Beaverlodge. Both Separate and Public Systems are tax supported; no additional tuition fees are charged.

There is a Regional College in Grande Prairie, offering a full first year university course and a second year university in some faculties. Business Administration, technical and self study courses are also available. For more information contact:

The Registrar
Grande Prairie Regional College
Grande Prairie, Alberta
Bag 1010

It is recommended that parents bring all pertinent school records for all school age children to facilitate enrollment in the local school system. Children living on the station are transported to school by county school buses.

RELIGIOUS FACILITIES

There are churches of most denominations in the neighboring towns. Civilian clergymen from Beaverlodge serve as officiating clergymen for station Protestant and Roman Catholic personnel.

RECREATION

SPORTS

The station has a Recreation Council and a very active sports program. There is a sports field available for softball, flag football and field events. The multi-purpose building houses a two lane bowling alley and TV and Games room. In addition, there is a new gymnasium that provides facilities for most recreational activities. Skating, curling and golfing facilities are available in both Grande Prairie and Beaverlodge. A tennis court and skating rink are also available on the station. Personnel may swim in Beaverlodge or Grande Prairie during the summer months and Grande Prairie during the winter.

MESSES

The Officers' and Senior NCO's Messes are situated in wings of the Combined Mess Hall. The Junior Ranks' "Summit Club" is in the multi-purpose building. A Social Centre is located adjacent to the Summit Club.

TELEVISION AND RADIO

The area is served by both Canadian TV networks via relays of Edmonton broadcasts from Grande Prairie. In addition, there is a TV outlet in Dawson Creek, which is a CBC relay from Vancouver. AM radio stations in the area are listed below:

Grande Prairie	CFGP	1050 kcs
Dawson Creek	CJDC	1350 kcs
Peace River	CKYL	610 kcs

There are no FM/FMX broadcast stations in the area.

CANEX

The station has a small but well-stocked Exchange. The Exchange stocks health and beauty aids, records and tapes, small appliances, giftware, small tools, kitchen utensils, inflatable furniture, toys and sporting goods. A full catalogue service is available.

The Exchange also operates a service station which is capable of meeting most automotive needs. A two-bay auto hobby shop is provided.

COMMUNITY INFORMATION

GRANDE PRAIRIE

The city of Grande Prairie is one of the fastest growing communities in Canada, having doubled its population in the past decade. It is situated in the heart of the Peace River Country, 285 miles from Edmonton and 27 miles from the station. The strategic position of Grande Prairie makes it a prime trading and distribution centre for a large area of the Peace River Country. Many station personnel live in Grande Prairie and the city provides modern shopping facilities, restaurants, service stations, hotels and banks. It also offers many recreational outlets. Additional information on the Grande Prairie area may be requested from the Grande Prairie Chamber of Commerce.

ACCOMMODATIONS

<u>HOTELS</u>	Park Hotel	532-2363
	York Hotel	532-2331
	G.P. Motor Inn	532-5221
<u>MOTELS</u>	Starlite	532-8819
	Twin Pine	532-1680
	Stockade Motel	532-4810
	Grandview	532-4040
	North Winds Motel	532-2609
	Tartan Motel	532-5591
	Swan Motel	532-2391
	Silver Crest	532-1040

BEAVERLODGE

The town of Beaverlodge is the closest community to the station. Beaverlodge has a number of excellent stores, service stations, a hotel and the largest Community Centre in the Peace River Country. Accommodation is limited but station personnel reside in Beaverlodge. Also, the Government Mobile Home Park is located in Beaverlodge.

ACCOMMODATION

<u>HOTEL</u>	Beaverlodge Hotel	354-2059
<u>MOTEL</u>	Beaverlodge Motel	354-2363

HANDY PHONE LIST

CFS Beaverlodge 403-354-2216
.....CSN/Autovon -334-1011

Commanding Officer Loc-200

CAdO Loc-201

CGEO Loc-251

SLogO Loc-220

SCEO Loc-217

SCompt Loc-212

Duty Officer Station Operator

MSE (Dispatcher) Loc-228

MIR Loc-233

SOR Loc-205

Military Police Loc-208

Main Guardhouse Loc-230